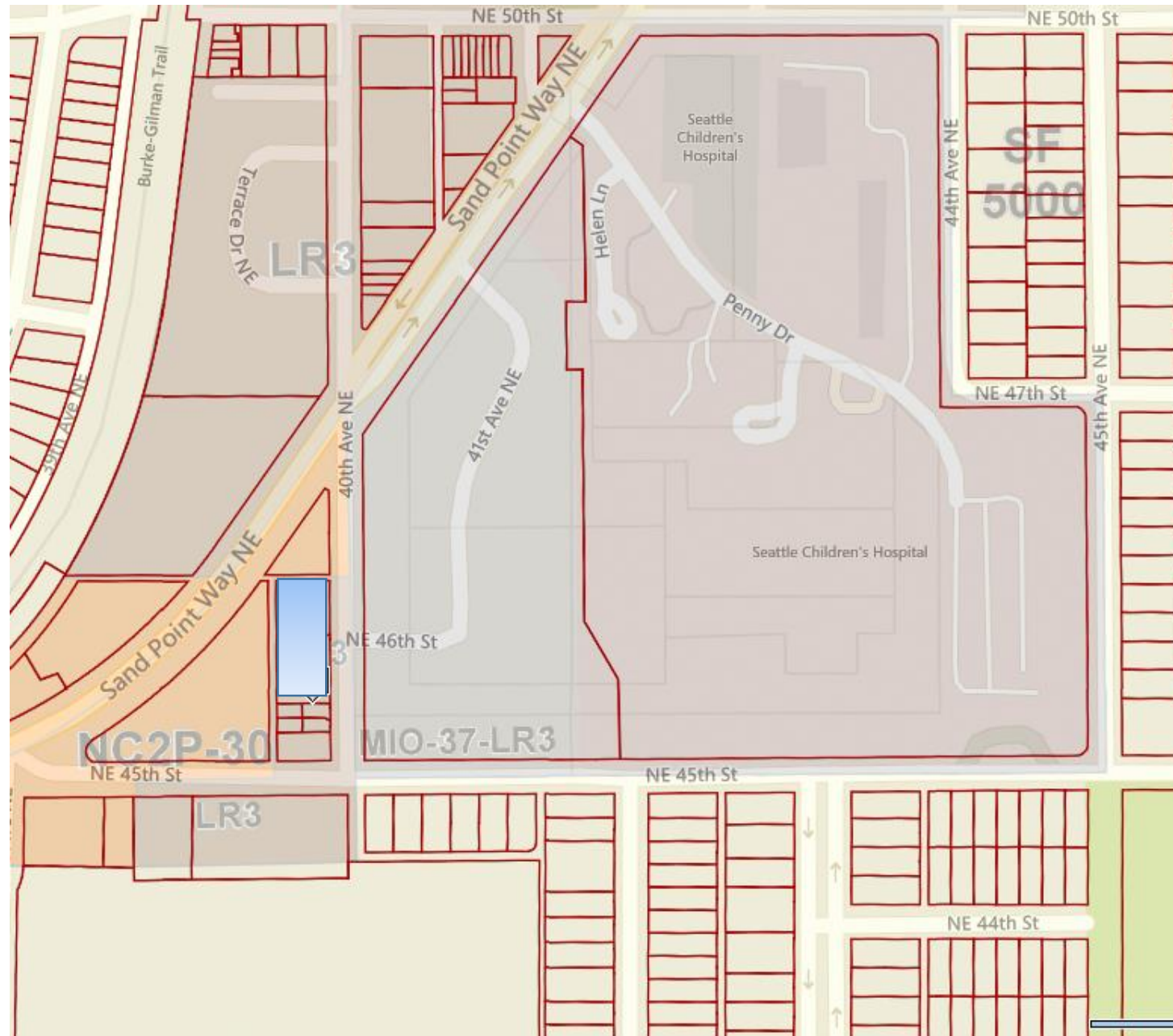


2015/16 Annual Comprehensive Plan Docketed Amendments

- NE 68th Street Map Change (Roosevelt)
- 40th Ave. NE Map Change (Laurelhurst)
- 35th Ave. NE Map Change (Wedgwood)
- NE 94th Map Change (Northgate)

2015/16 Annual Comprehensive Plan Docketed Amendments

- 40th Ave. NE Map Change
(Laurelhurst)



2015/16 Annual Comprehensive Plan Docketed Amendments

- 35th Ave. NE Map Change
(Wedgwood)



35th Ave. NE Map Change (Wedgwood) continued

85th St. at 35th Ave.

Existing

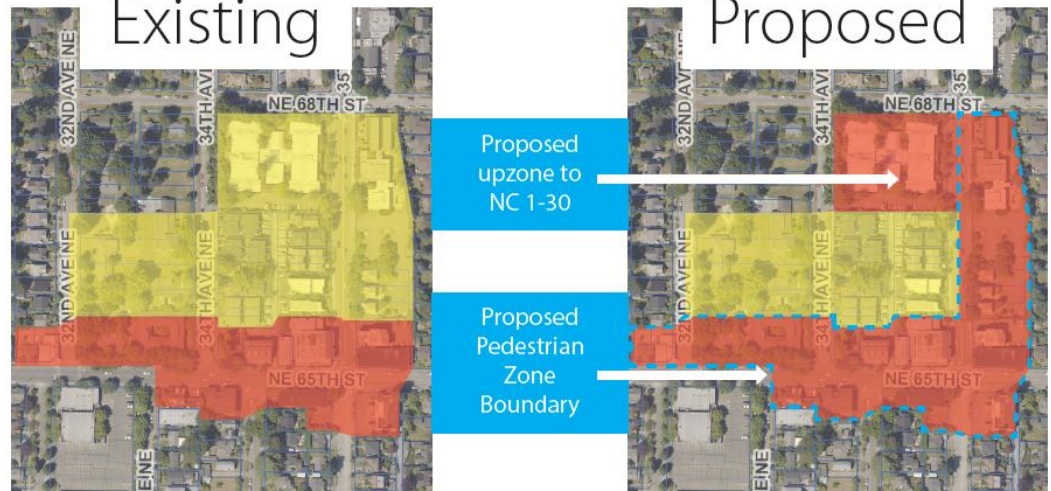
Proposed



65th St. at 35th Ave.

Existing

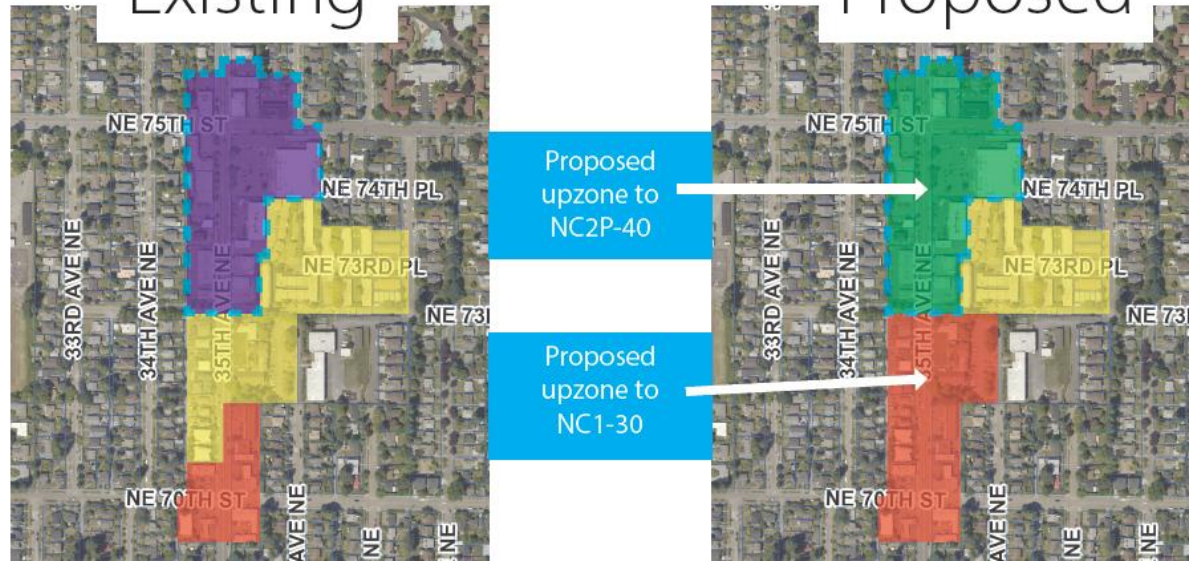
Proposed



75th St. at 35th Ave.

Existing

Proposed



- Lowrise 2 Zone (LR 2)
- Neighborhood Commercial Zone (NC2P-40)
- Neighborhood Commercial Zone (NC1-30)
- Pedestrian Zone Boundary

2015/16 Annual Comprehensive Plan Docketed Amendments

- NE 94th Map Change
(Northgate)

