



Accessible Mt. Baker

Integrated Multimodal Plan



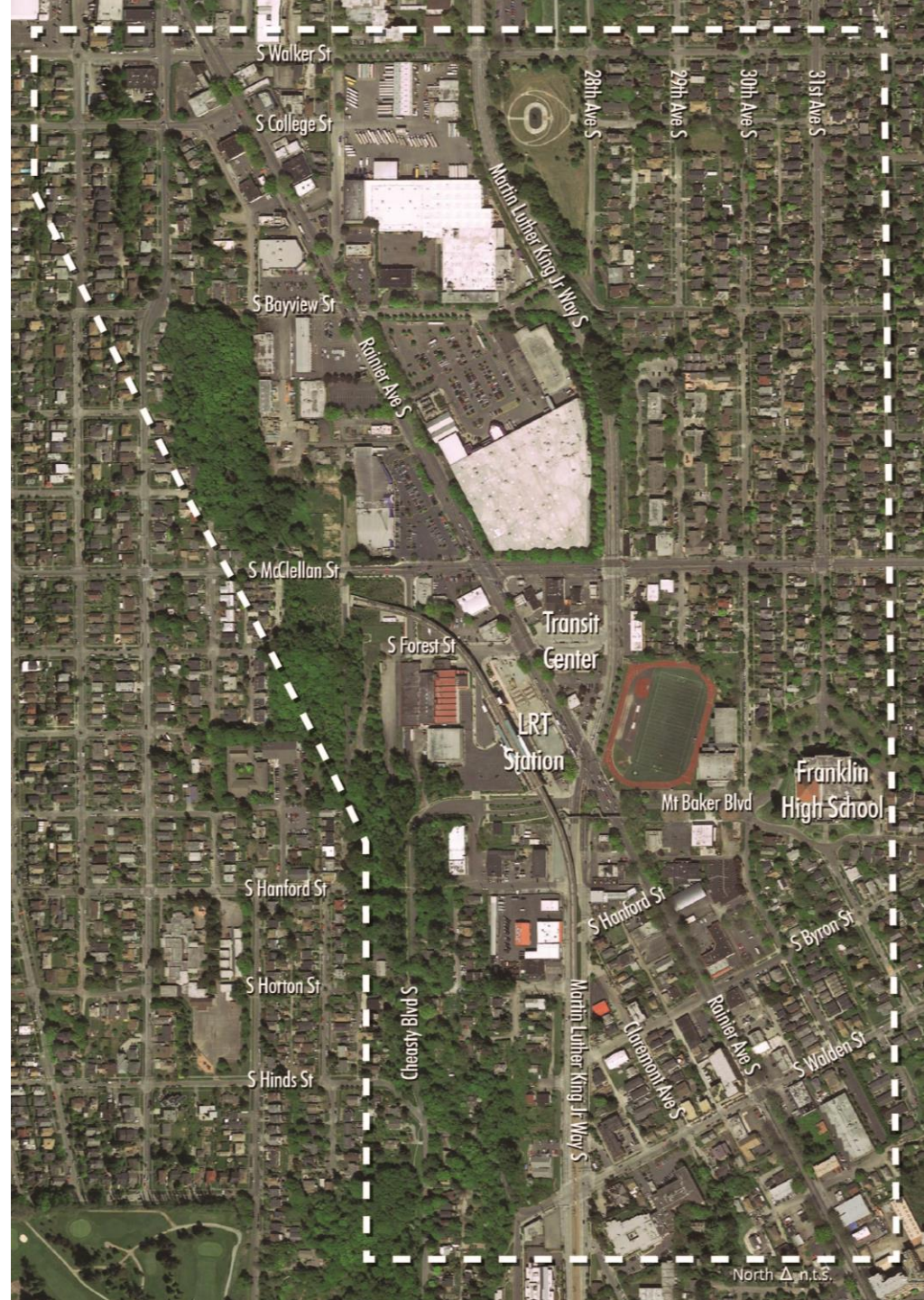
Freight Advisory Board

Michael James, SDOT

March 17, 2015

Background / Study Area

- North Rainier Neighborhood Plan
- SE Transportation Study
- McClellan Town Center Development Strategy
- North Rainier Action Plan
- Seattle Station Area Transportation Analysis
- Mt. Baker Urban Design Framework
- Seattle Mobility Plans
- Community Voices



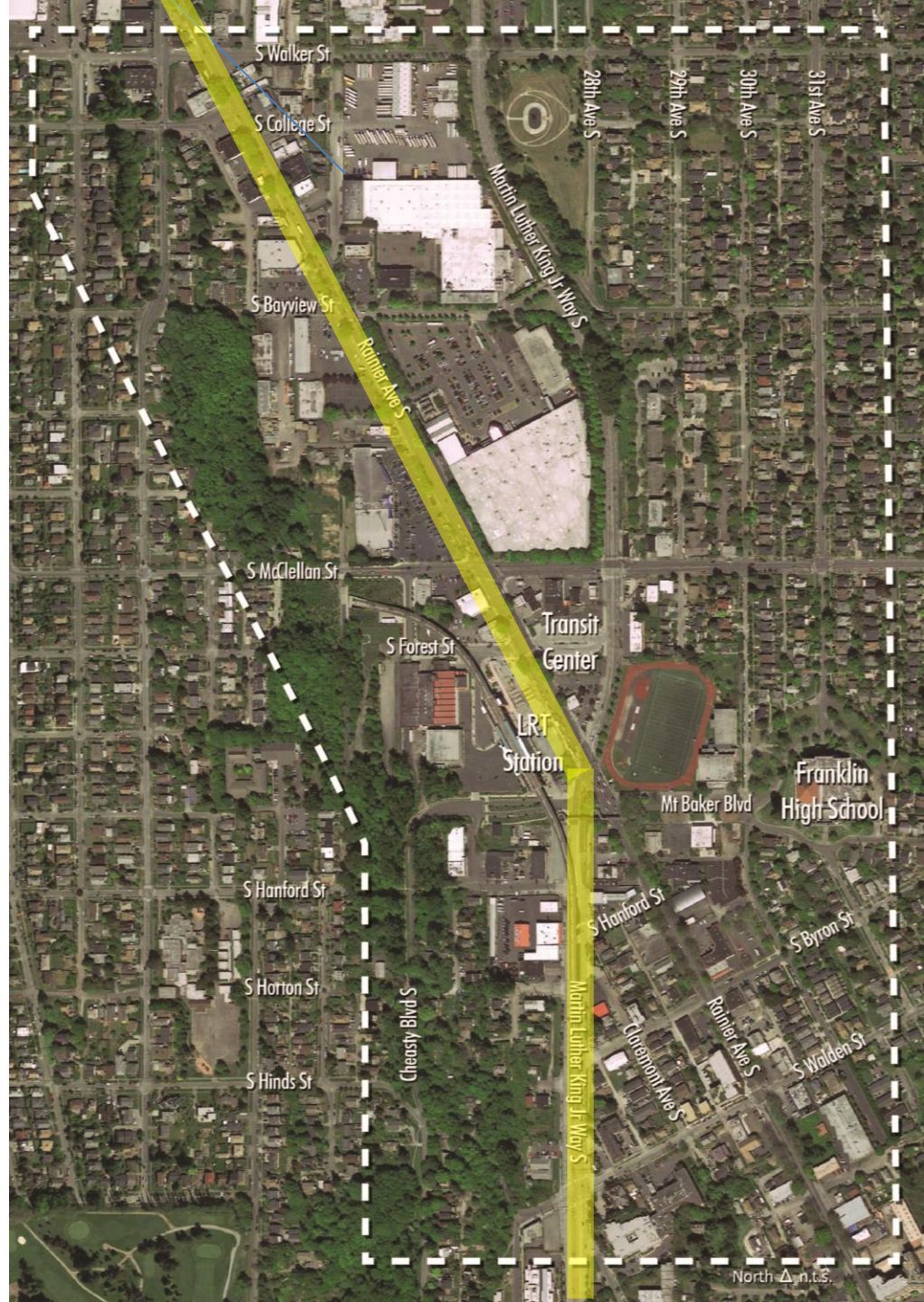
Freight Planning Coord.

Major Truck Streets

- Rainier Ave. north of MLK
- MLK south of Rainier Avenue

FMP

- Ongoing coordination
- Acknowledge potential hierarchy of freight designations
- New designations in the study area



Teams

Interdepartmental City Team

- Seattle Dept. of Transportation
- Dept. of Planning and Development
- Office of Housing
- Dept. of Neighborhoods/Public Outreach and Engagement Liaisons
 - Somali, Spanish, Oromo, Tigrinya and Amharic

Consultant Team

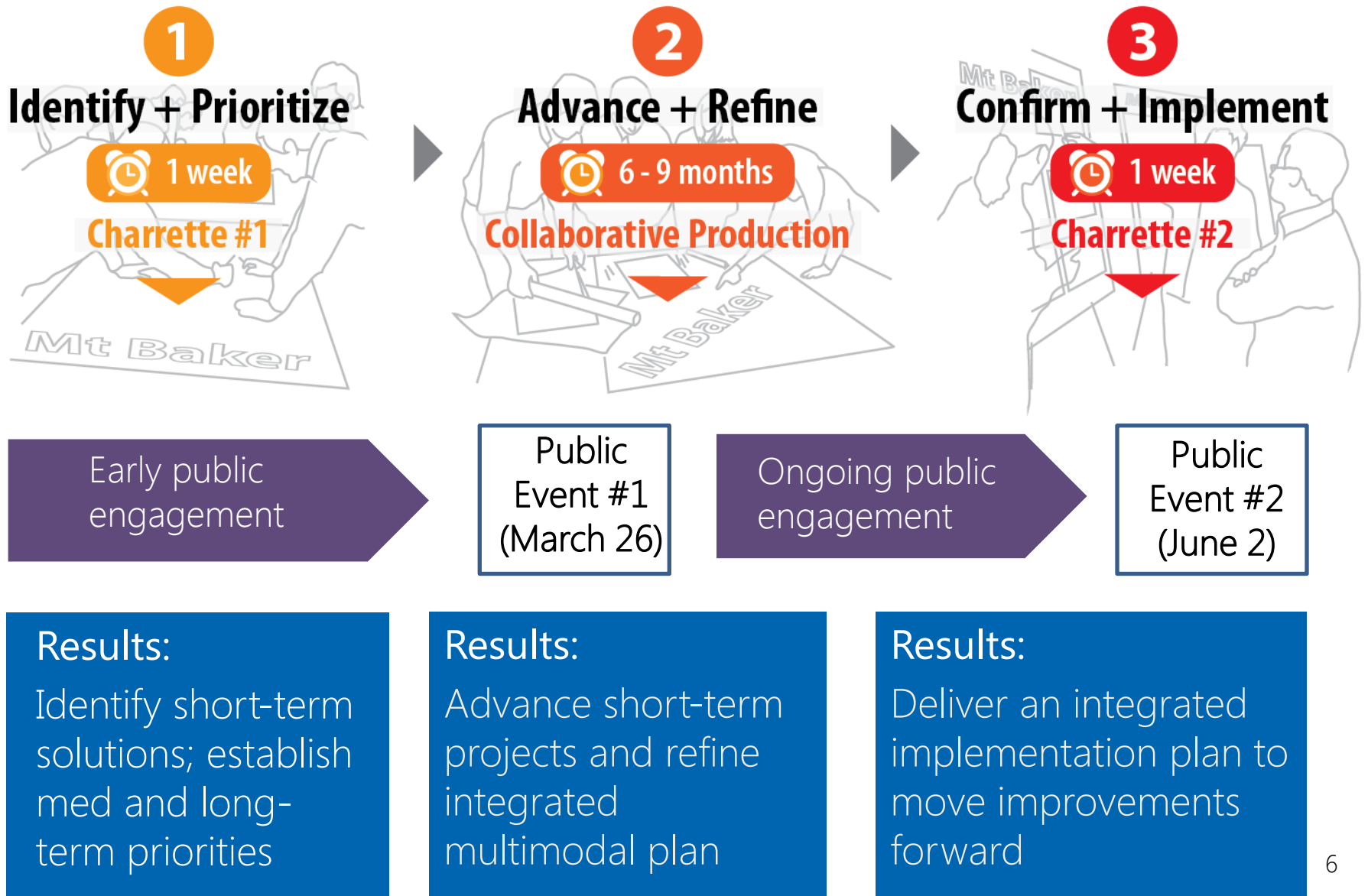
- HDR (transportation)
- Cascadia Consulting Group (outreach)



Project outcomes

- Identify and develop conceptual designs for pedestrian and bicycle safety improvements
- Refine an integrated multimodal plan
 - Operational analysis for all modes
 - Reconsider the “Bowtie”
 - How are improvements prioritized and phased?
 - Strengthen community assets and values

Scope Overview



Guiding Principles

- Integrate **transportation** and **land use**
- Create a **network** of streets, paths and open space
- Identify and **respect known constraints**
- Make a **legible and identifiable** place
- Establish the **hierarchy** of modes:
 1. Ped/Bike: Safety and comfort
 2. Transit: Reliable and frequent
 3. Freight: Access and geometrics
 4. Auto: Calm and equal throughput
- Optimize **fire and emergency** access
- Apply **universal design** and promote **equity**

Near-term actions

Phase 1

- Pedestrian safety and comfort improvements within existing R/W
- Other maintenance activities

Phase 2

- Traffic and transit modifications
- Mt Baker station enhancements
- Pedestrian safety and comfort improvements
- Bicycle safety and comfort improvements

Long-term Concept

- Reflects the **prioritized** connections
- Restores the **traditional** urban values
- Eliminates or reduce the **confluence** of streets
- Supports **redevelopment** to the north and **conservation** to the south
- Allows the **Olmsted** Greenway extension
- Creates the desired **destination**

Schedule

- December 2014: launch study, Charrette #1
- January – March: early engagement
- **March 26: public event**
- June 2: public event #2
- Fall 2015: final report



ACCESSIBLE MT. BAKER: OPEN HOUSE



JOIN US!
March 26, 2015
6:00 PM to 8:00 PM
at Kings Hall
2929 27th Ave South
Seattle, WA 98144

The Accessible Mt. Baker project is identifying and developing designs for pedestrian and bicycle safety projects in the 1/2 –mile of the Link light rail station area. Join us at an informal drop-in session to:

- Hear project updates from the project team.
- Review proposed design concepts.
- Chat one-on-one with the project team about the project.

For more information, or if you can't make it to the Open House, please contact:

Gretchen Muller
Community Outreach Manager
206-449-1115
Gretchen@cascadiaconsulting.com

Michael James
Project Manager
206-386-4012
Michael.James2@seattle.gov

Christopher Yake
Deputy Project Manager
206-727-8719
Christopher.Yake@seattle.gov



Can't come to the meeting but want your voice to be heard? Please complete the Accessible Mt. Baker project survey here:

www.surveymonkey.com/s/accessmtbaker

Questions?

michael.james2@seattle.gov | (206) 386-4012

<http://www.seattle.gov/transportation/accessibleMtBaker.htm>

