



2015 Road Safety Corridors

Jim Curtin
January 20, 2015



SDOT's mission & vision

Mission: delivering a first-rate transportation system for Seattle.



Vision: a vibrant Seattle with connected people, places, and products.

SDOT's values



Presentation overview

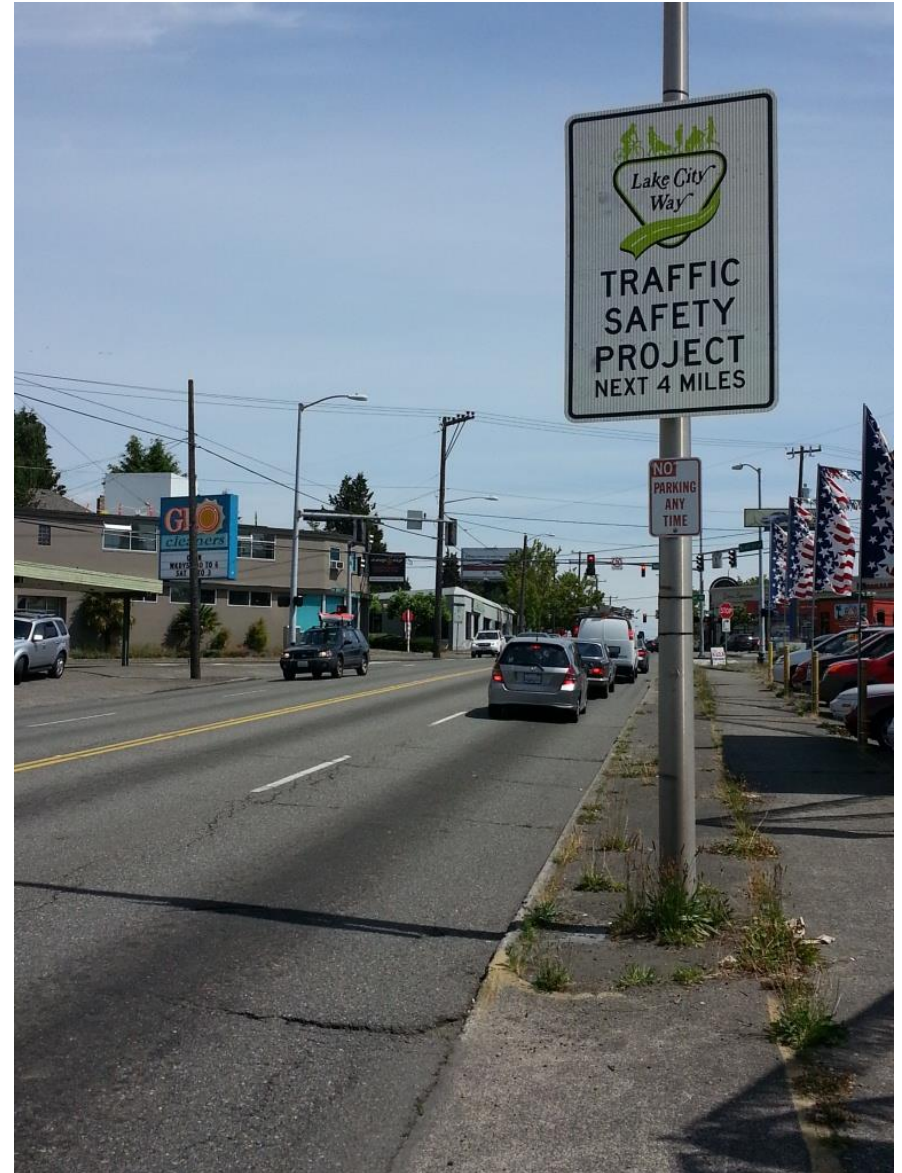
- Corridors
 - Lake City Way
 - SW Roxbury Street
 - 35th Avenue SW
 - Rainier Avenue S
- Upcoming safety efforts



SW Roxbury Street at 10th Avenue SW looking west (photo courtesy of Patrick Robinson, West Seattle Herald)

Lake City Way

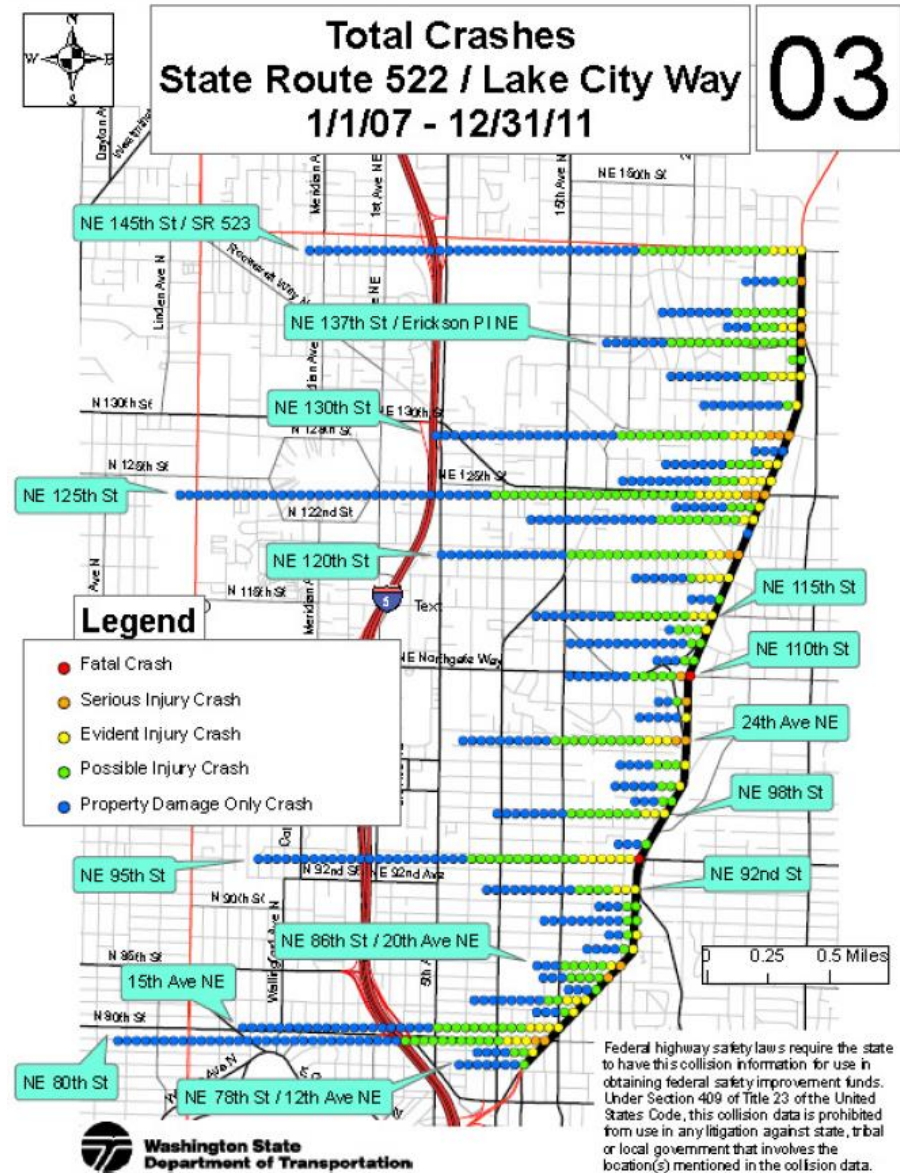
- Partnership with State, locals
- Short-term, relatively low cost engineering, enforcement and education efforts
- Launched March 2014



Lake City Way

- Data-driven improvements
 - 717 crashes last five years
 - 21 fatal/serious
- Action Plan includes:
 - New signs
 - Radar speed signs
 - Crossing improvements
 - Civil projects at 24th NE, NE 110th Street, N 135th Street and N 145th Street

More information
www.seattle.gov/lcw



SW Roxbury Street

Speeds

- 5+ mph over speed limit in most locations

Collisions

- 223 total collisions last three plus years
- 112 injuries



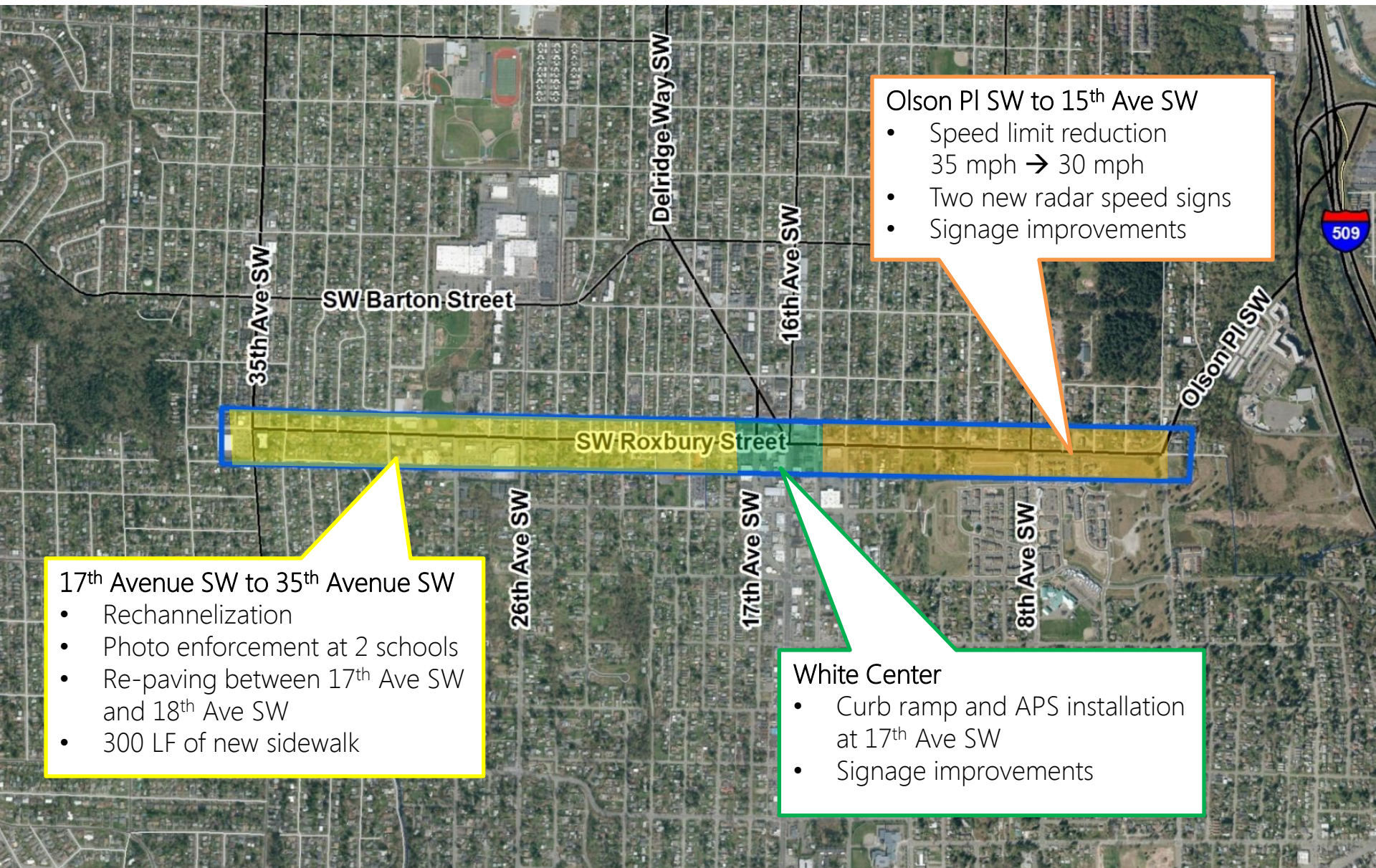
34.4 mph/37.7 mph - 85th percentile speeds

Eastbound / Westbound

All Collisions - Last 3+ Years

- 1 - 4
- 5 - 7
- 8 - 12
- 13 - 16
- 17 - 22

Roxbury design proposal



Olson Pl SW to 15th Ave SW

- Speed limit reduction
35 mph → 30 mph
- Two new radar speed signs
- Signage improvements

17th Avenue SW to 35th Avenue SW

- Rechannelization
- Photo enforcement at 2 schools
- Re-paving between 17th Ave SW and 18th Ave SW
- 300 LF of new sidewalk

White Center

- Curb ramp and APS installation at 17th Ave SW
- Signage improvements

SW Roxbury Street

Project status

- Recommendations meeting
February 2015
- Implementation
Summer 2015



More information

www.seattle.gov/transportation/roxbury.htm

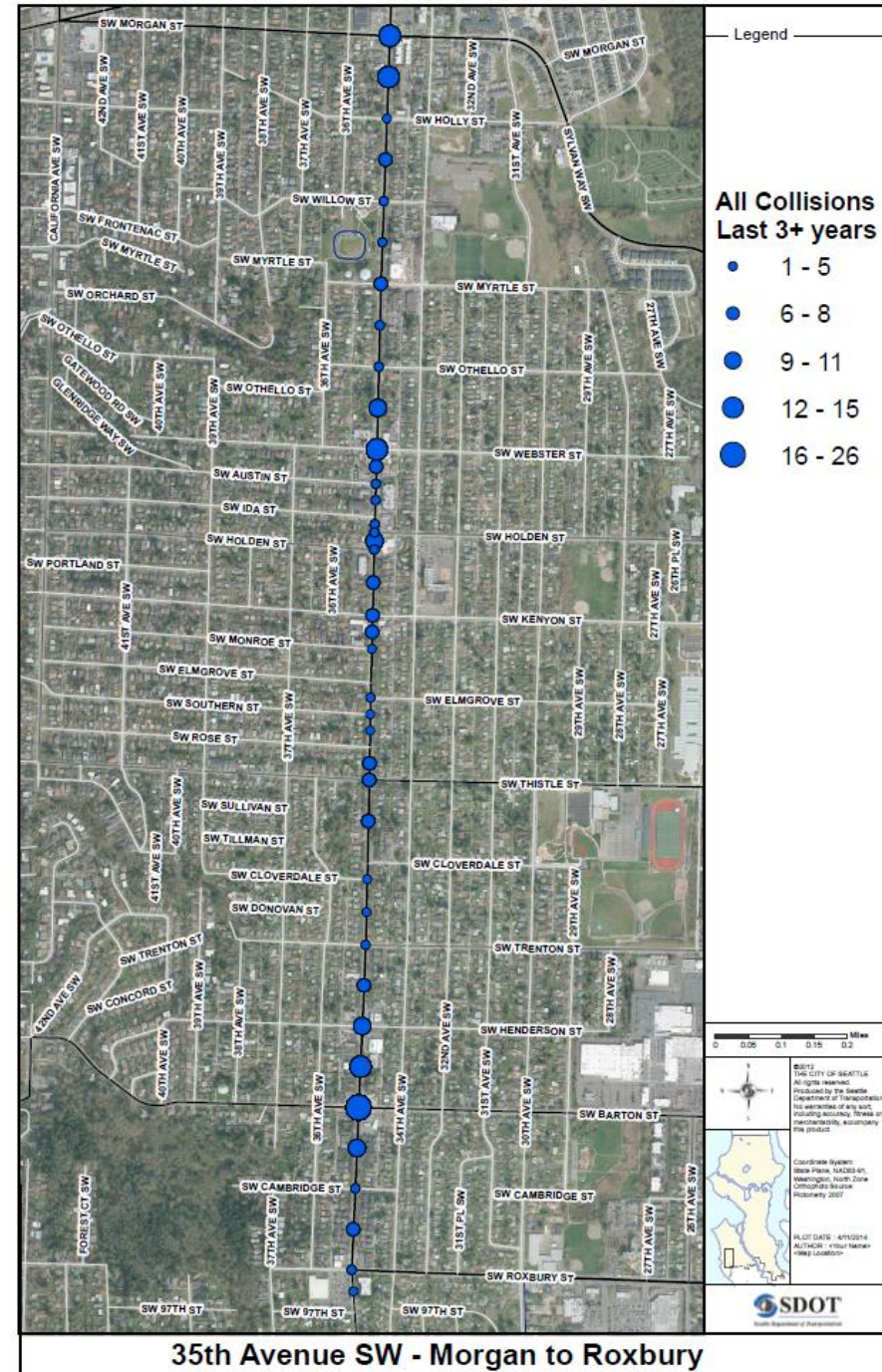
35th Avenue SW

Collision data
Last 3 plus years

- 294 total collisions
- 128 injuries
- 2 fatalities

Last 10 years

- 1065 total collisions
- 412 injuries
- 5 fatalities



35th Avenue SW

Speed studies

- Posted speed limit 35 mph
- 38.5 mph at SW Brandon St
- 40.9 mph at SW Willow St
- 36.5 at SW Roxbury St



35th Avenue SW

Project status

- Design alternatives meetings
February-March 2015
- Recommendations meeting
May 2015
- Implementation
Summer 2015



More information

www.seattle.gov/transportation/35thSW.htm

Rainier Avenue S

Average of 1 crash/day on Rainier

Last 3 years

- 1243 total collisions
- 630 injuries
- 2 fatalities

Last 10 years

- Nearly 3600 total collisions
- 1700+ injuries
- 11 fatalities



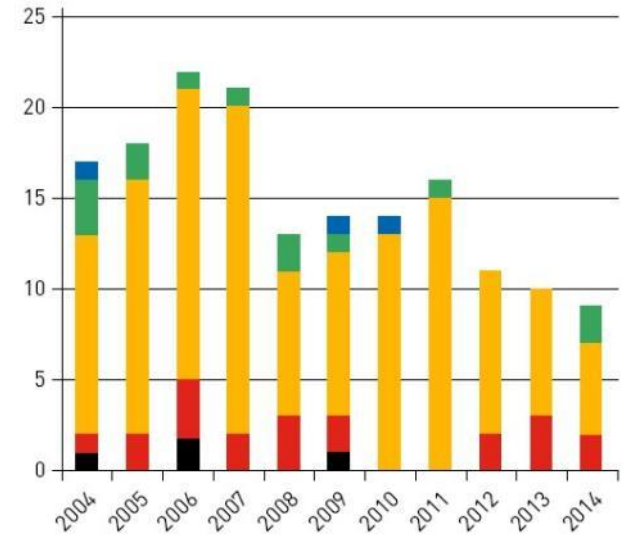
Rainier Avenue S

Pedestrian and bicycle collisions last 3 years:

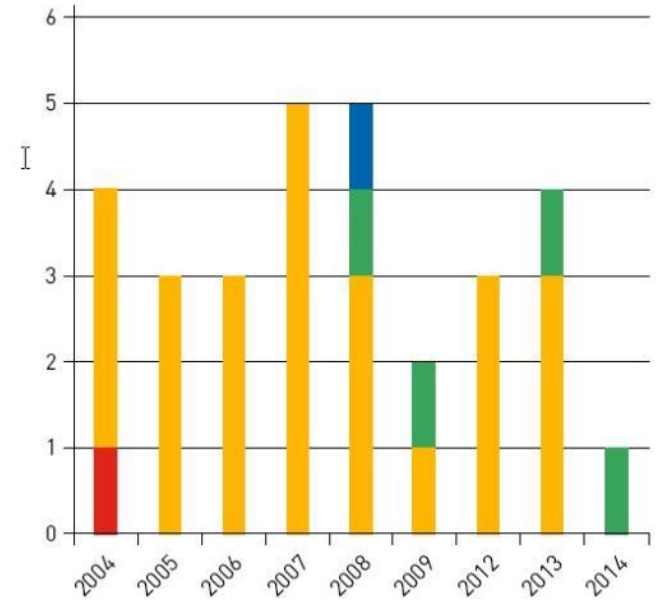
- 46 pedestrian-vehicle
- 10 bicycle-vehicle

Last 10 years:

- 165 pedestrian-vehicle
- 30 bicycle-vehicle



Annual Pedestrian Collisions



Annual Bicycle Collisions

Rainier Avenue S

Posted speed limit is 30 miles per hour

Location	85th Percentile Speed	Percent Speeding (3+ mph over the speed limit)	Average number of high-end speeders per weekday
S Hudson Street	35 mph	20%	611/day
42nd Avenue South	38 mph	55%	1812/day
S Holly Street	37 mph	56%	1083/day
S Cloverdale Street	36 mph	38%	1083/day

High-end speeders = 10+ miles per hour over the speed limit

Rainier Avenue S

Project status

- Design alternatives meetings
February-March 2015
- Recommendations meeting
Late April 2015
- Implementation
Summer 2015

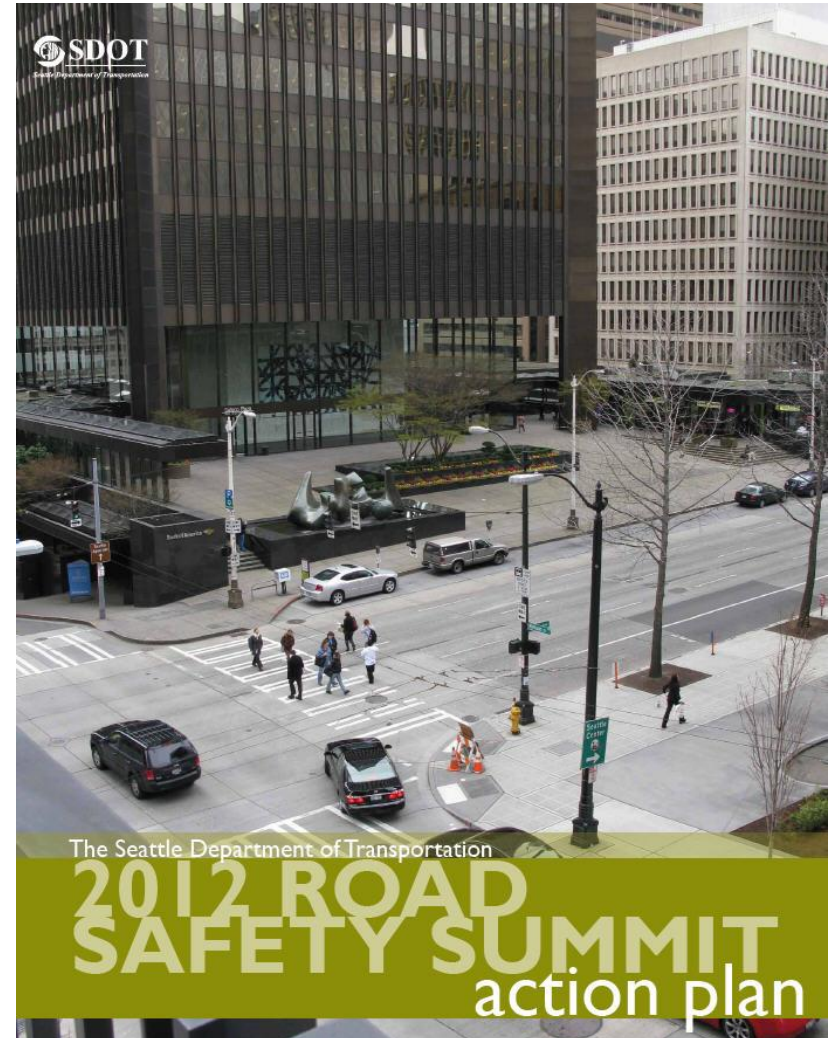


More information

www.seattle.gov/transportation/rainieraves.htm

Upcoming safety efforts

- Seattle to re-commit to safety goals set in 2012
- SDOT to review speed limits citywide
- Will allow FMP process to finish prior to incorporating major truck streets into work plan
- Seeking partners



Questions?

jim.curtin@seattle.gov | (206) 684-8874

<http://www.seattle.gov/transportation/roxbury.htm>

<http://www.seattle.gov/transportation>

