

Status Update

Second Ave Protected Bike Lane

Demonstration Project



Seattle Bicycle Advisory Board
Sam Woods, Project Development Division
April 1, 2015

SDOT's mission & vision

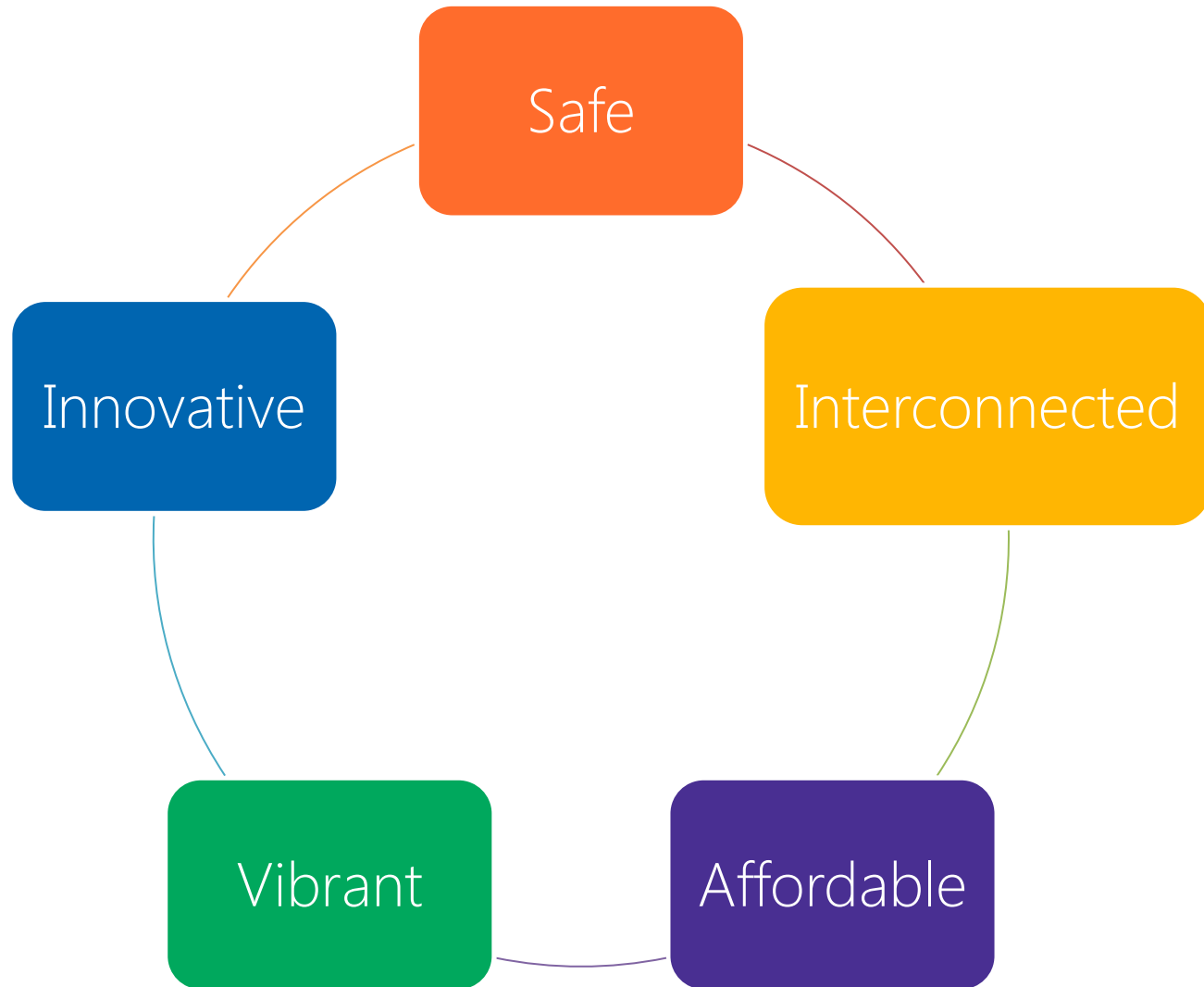
Mission: delivering a high-quality transportation system for Seattle



Vision: connected people, places, and products

Committed to 5 core values

Create a city that is:

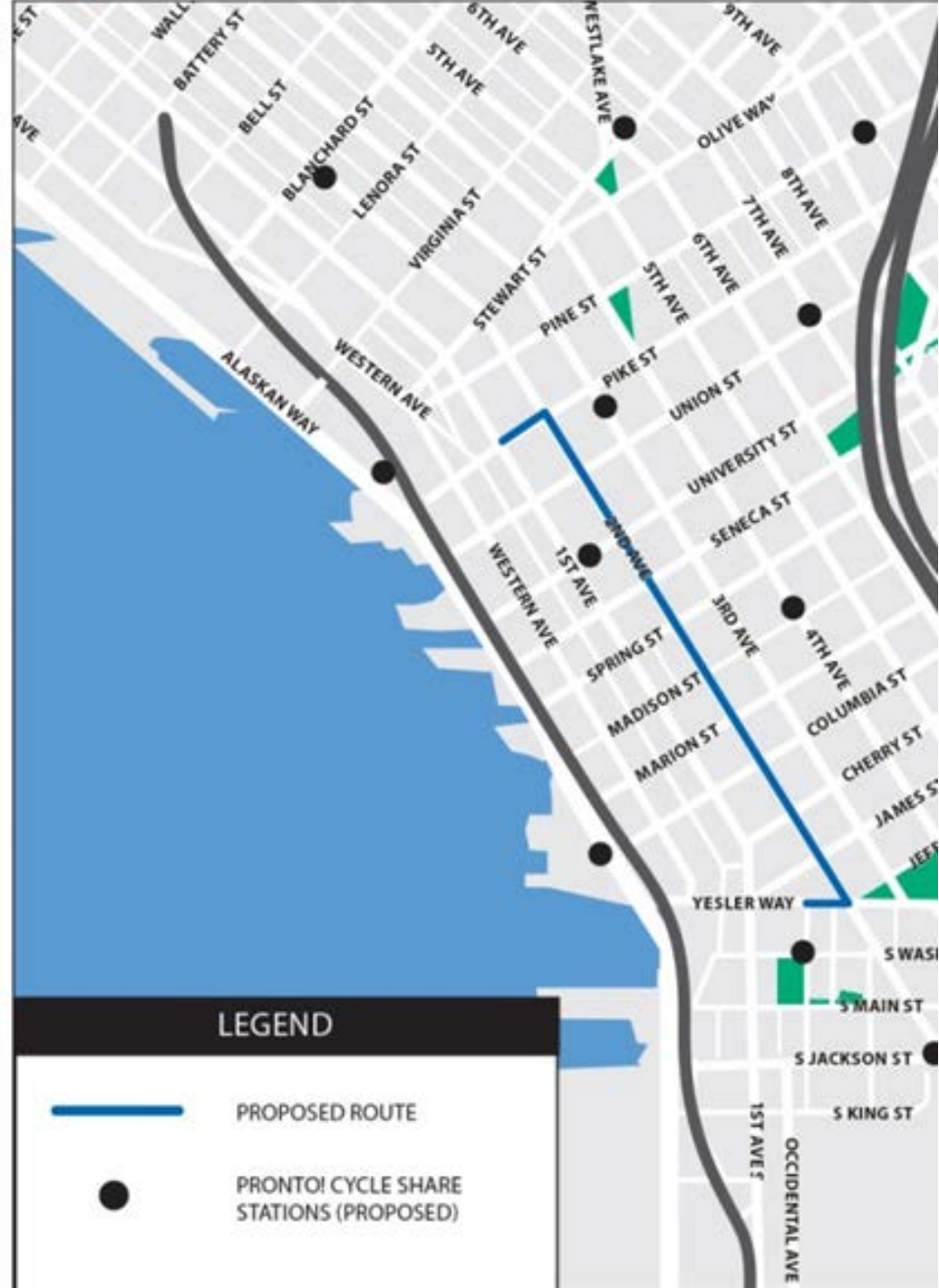


Presentation overview

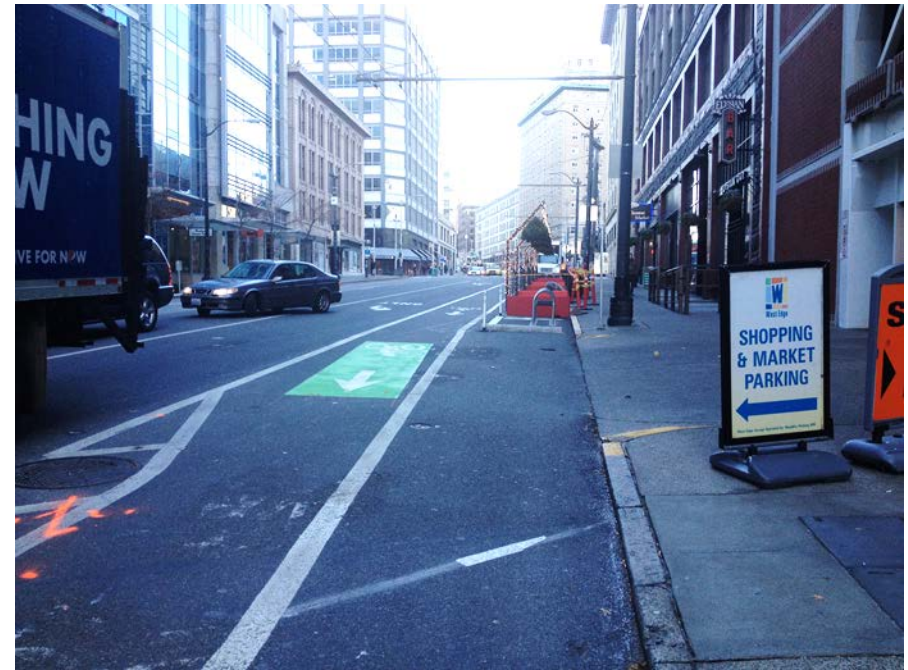
- Background
- Feedback and changes to date
- Before and after evaluation plan

Project area & background

- Identified in Bike Master Plan
- Announced plans to construct May 6
- Opened Sept 8
- Monitoring and modifications ongoing



Changes to date



- 'No Turns on Red' signs
- Parking changes near garages

Changes to date



- 'T's and 'L's added to parking lane
- Pavement markings near garages

Changes to date



New pavement markings where valet service occurs

Changes to date



New signs to increase awareness

Evaluation report components

- Project goals
- Safety goals
- Ridership
- Vehicle and transit travel times
- Education and encouragement efforts
- Enforcement and compliance data
- Moving forward

Project goals & outcomes

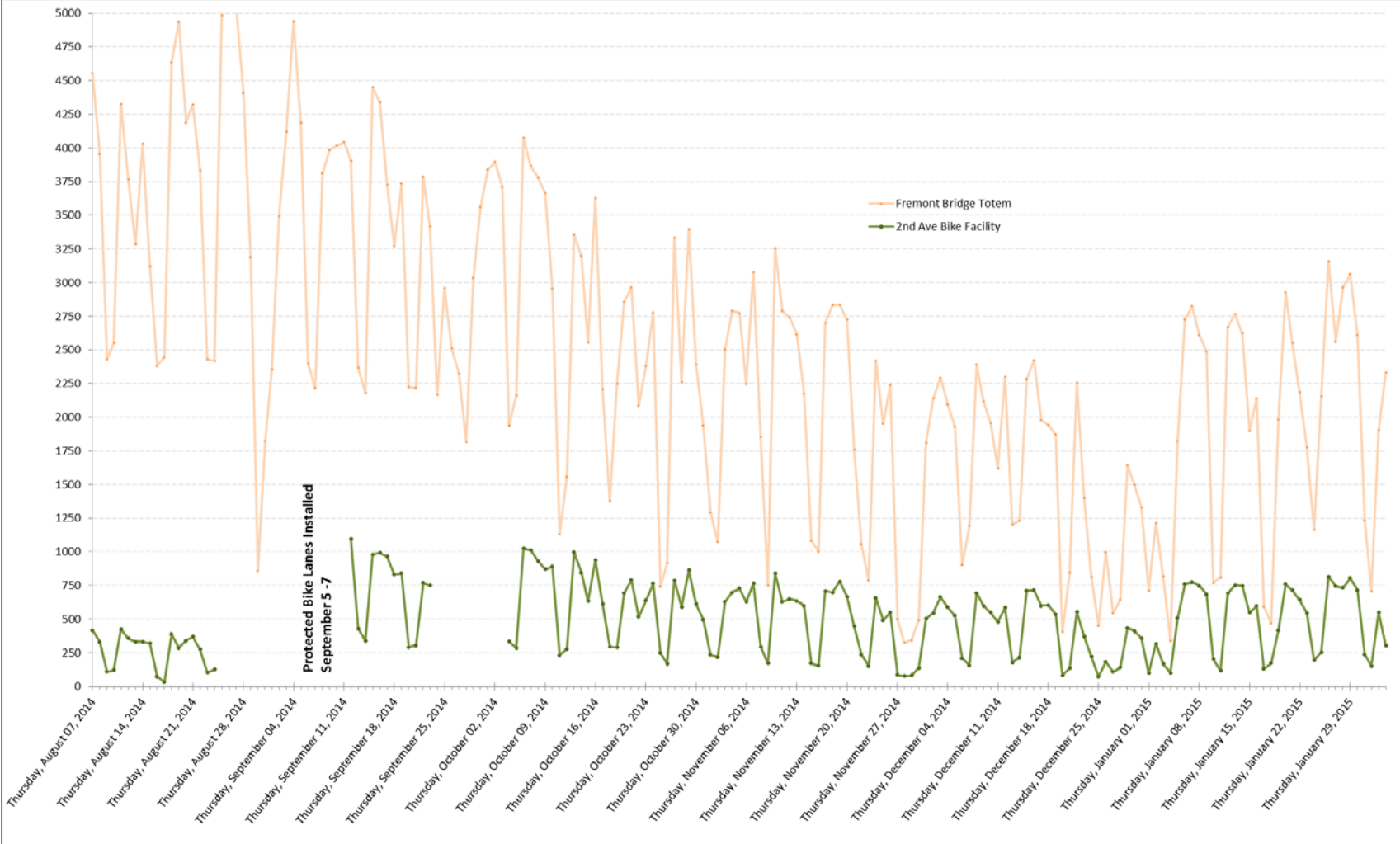
Goals:

- Improve bicycle safety
- Improve bicycle access
- Increase bicycle ridership
- Minimal impact to transit travel times

Outcomes:

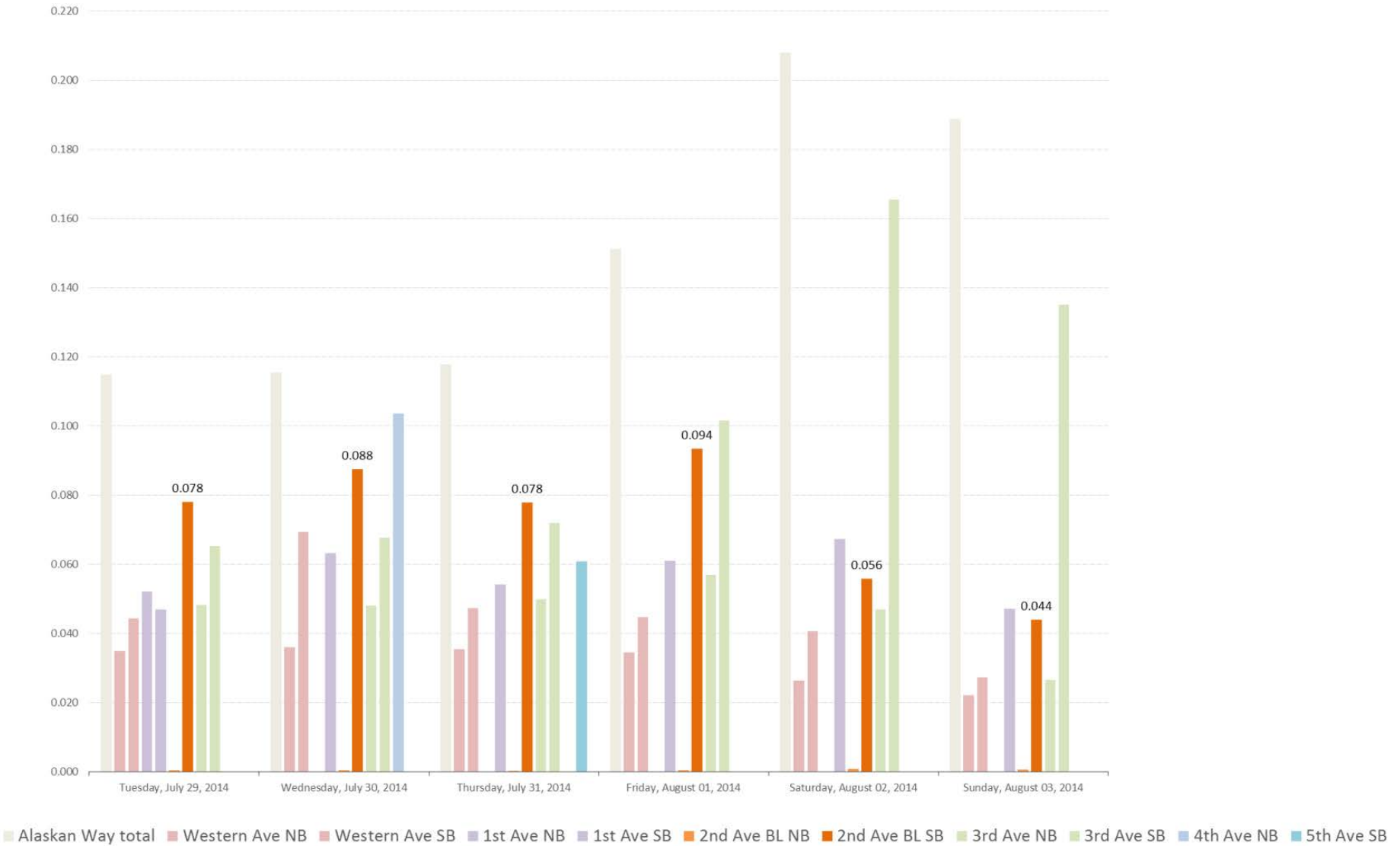
- Decline in rate of bicycle collisions
- Improved bicycle access
- Increase in bicycle ridership
- No impact to transit travel times

Fremont Bridge & 2nd Ave comparison

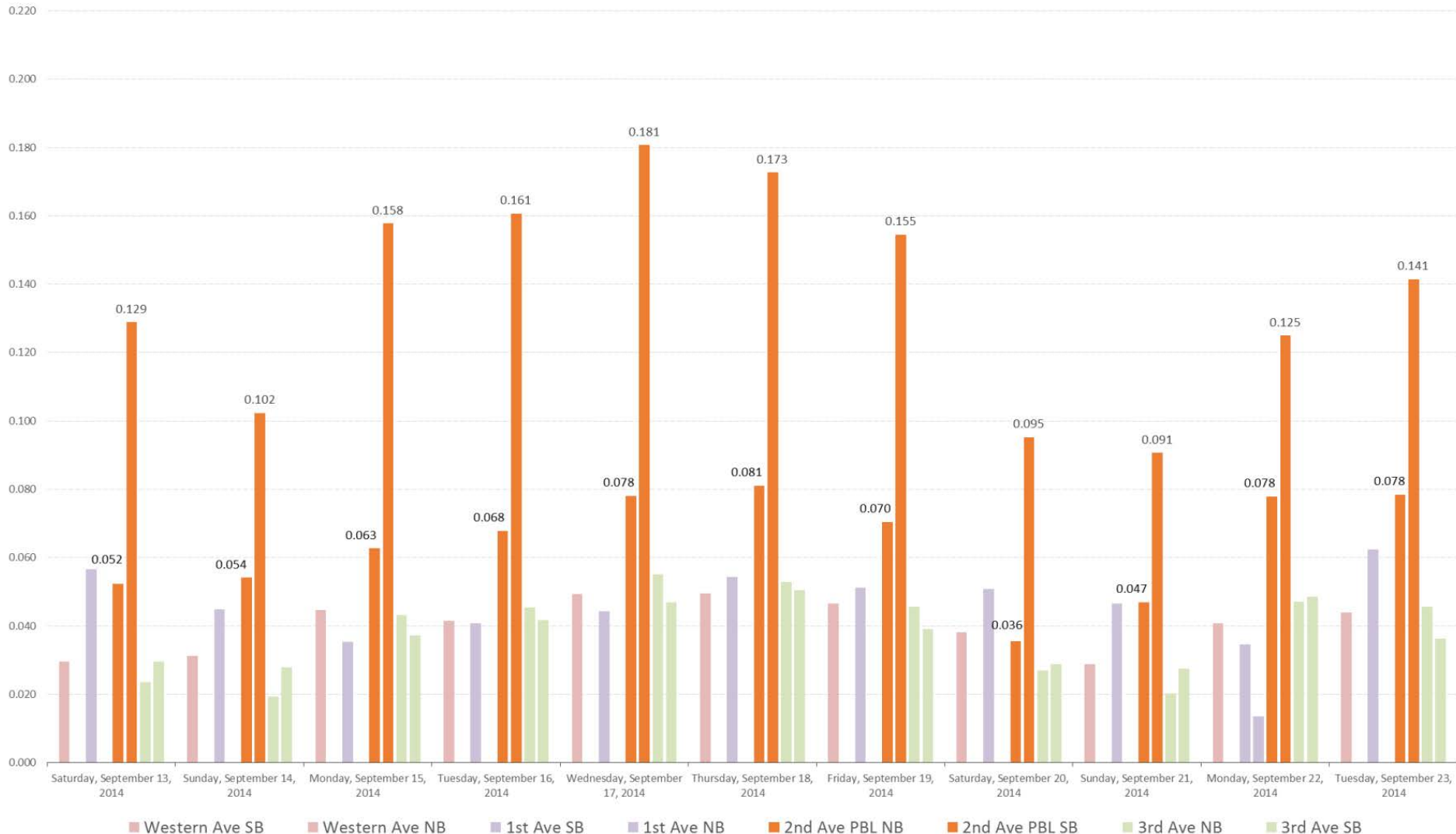


Ridership on Second Avenue is up!

Ridership pre PBL

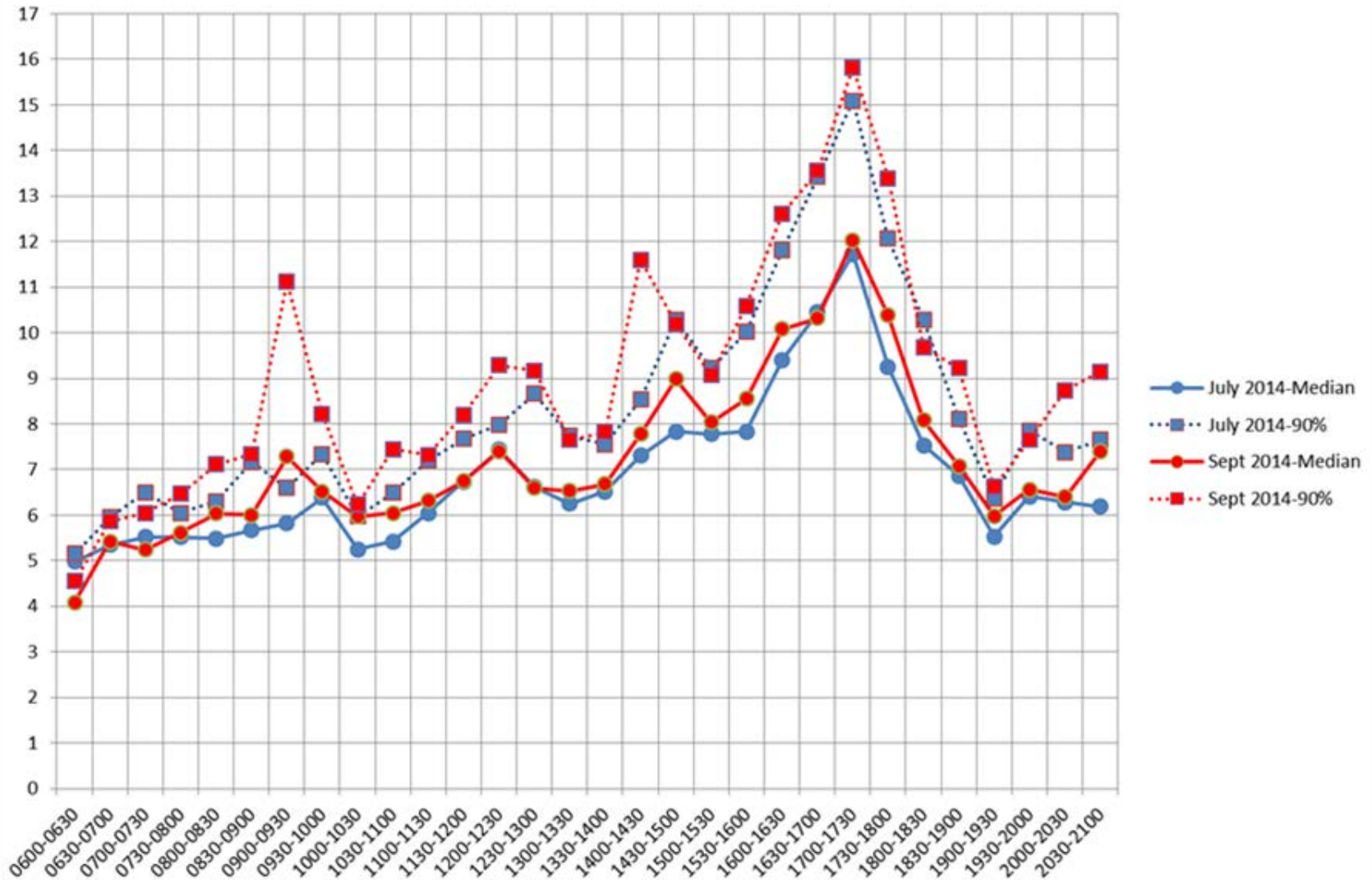


Ridership post PBL



Metro travel times

2nd Avenue between 2nd/Stewart and Washington/4th
Median and 90% travel times -- July 2014 vs September 2014



Compliance

- Data from Oct 2014 indicate:
 - 85% driver compliance
 - 92% bicyclist compliance
- Follow up Compliance Study April 2015

Schedule

Sept 2014- Feb 2015	Transition period
April 2015	Compliance evaluation
May 2015	Education & Bike Counts
Feb 2015- Sept 2015	Post installation evaluation period
Fall 2015	Evaluation report

Questions?

Sam.woods@seattle.gov | (206) 733-9408

<http://www.seattle.gov/transportation/bike.htm>

<http://www.seattle.gov/transportation>

