

Georgetown Mobility Study



Seattle Bicycle Advisory Board

Diane Wiatr

August 2, 2017



Seattle
Department of
Transportation

Our mission, vision, and core values

Mission: deliver a high-quality transportation system for Seattle

Vision: connected people, places, and products

Committed to **5 core values** to create a city that is:

- Safe
- Interconnected
- Affordable
- Vibrant
- Innovative

For **all**

Presentation overview

- Project overview
- Partners
- Outreach and Engagement
- Community Feedback
- Next steps



Project goals

- Safety
- Access
- Community health
- Mobility



Partners

- SDOT Sidewalk Assessment
- Seattle Parks Foundation – *Georgetown Open Space Vision*
- Duwamish Valley Safe Streets
- Duwamish Valley Action Team
- Georgetown Merchants Association
- Georgetown Community Council
- Manufacturing Industrial Council (MIC)
- UW Health Impact Assessment
- Bicycle parking assessment in Georgetown by Brock Howell







Outreach and Engagement

- Advisory Group
- Community Clinic(s)
 - Martin Court, Skyway Opportunity
- Online survey & interactive map
- Bike tour
- Door knocking by Community Liaisons
- Meetings with business, Port, King County International Airport, Duwamish River Clean-up Coalition representatives
- Intercept surveys at St Vincent DePaul – Cantonese, Spanish, Russian
- Public meetings & community events
 - GCC, GMA, DVSS, MIC, Seattle Modal Advisory Boards, New Direction Missionary Baptist Church



What we've heard

- Safety concerns
 - Parking at intersections
 - Traffic calming
- Pedestrian & bicyclist connections
 - To South Park
 - Within Georgetown
- Streetscape improvements
- Bus stop enhancements

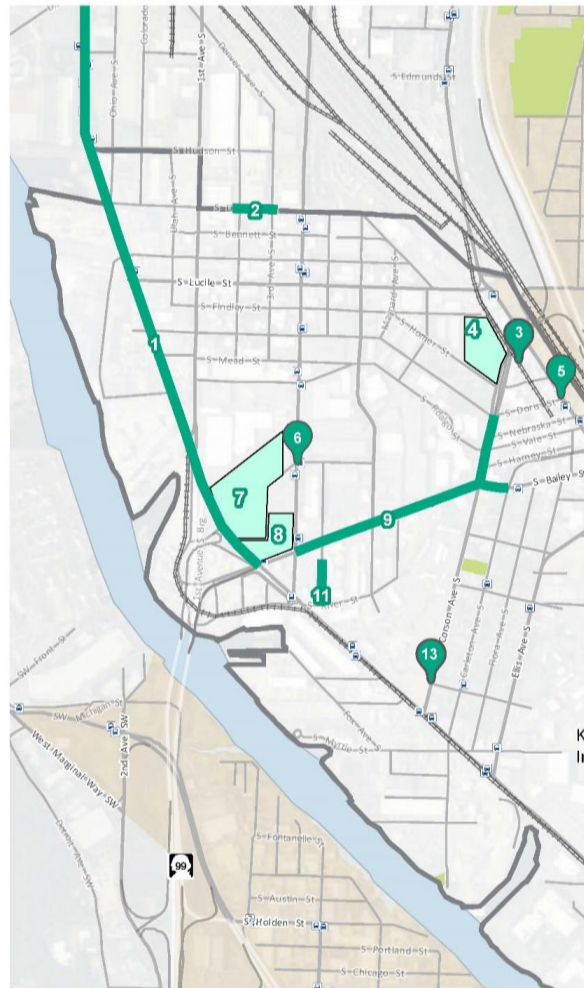


What we've heard (cont.)

- Large vehicle parking
- Wayfinding
- Corridors
 - 6th/Orcas/Lucile
 - East Marginal Way
 - Michigan/Bailey/Corson
 - Airport Way
- Implementation


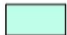



Upcoming projects



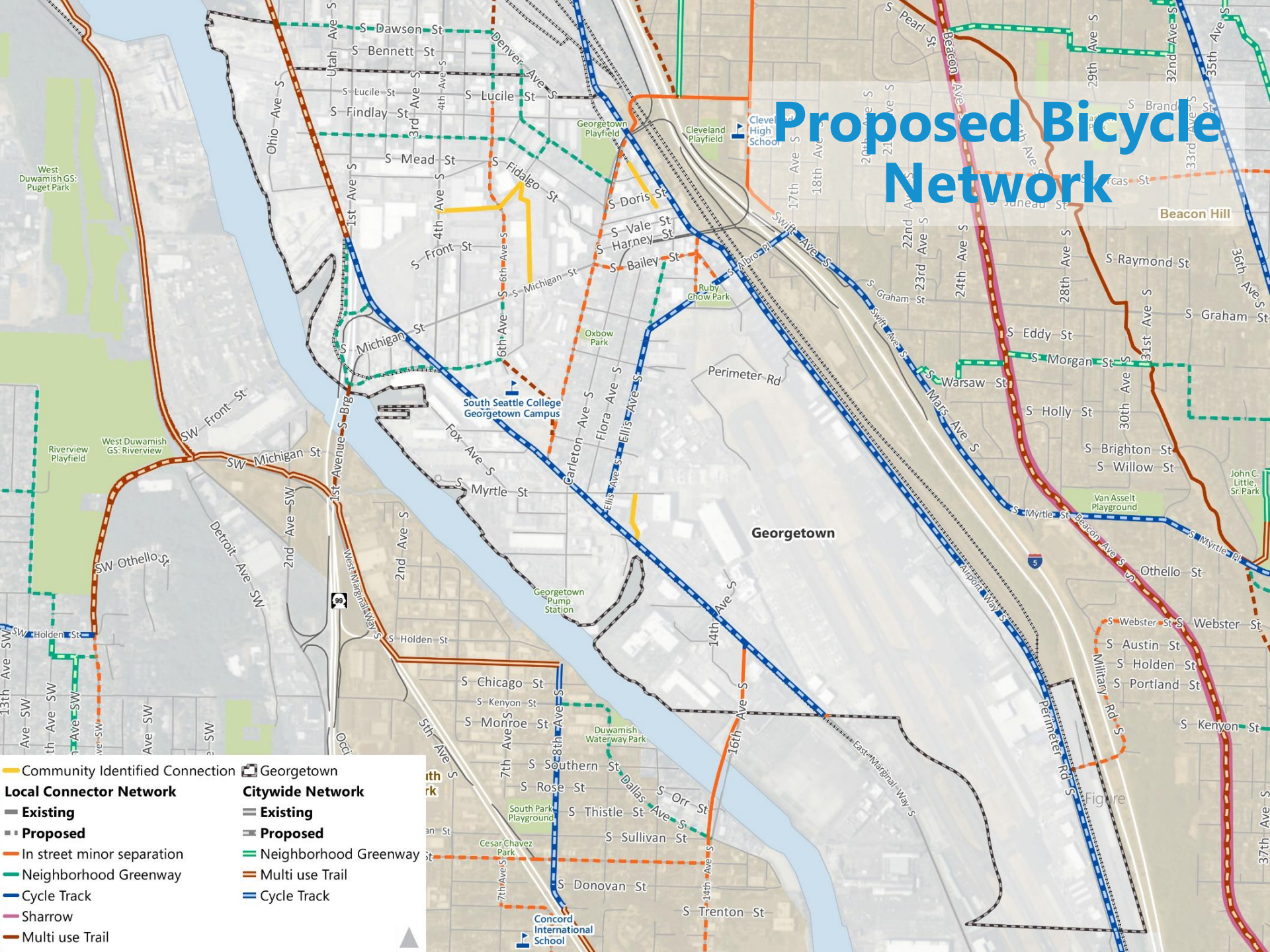
Projects and Planning Studies	
1	Conceptual Design - E Marginal Way Corridor (Atlantic - S Michigan St)
2	Depaving Project - S Dawson St
3	Crossing improvements along UPRR corridor
4	Georgetown Playarea reconstruction
5	New crosswalk: Airport Way & Doris St
6	New crossing & bus stop improvements -4th & Front St
7	Prologis warehouse construction
8	Wet Weather Treatment Plant construction
9	Michigan St ITS & repaving Projects
10	New pathway on E Marginal (14th-16th Ave S)
11	Pavement to Parks - 5th Ave (In Discussion)
12	Street repaving and ped. /bike improvements on Swift/Myrtle/Othello
13	New Crossing at Corson & Willow (w/ bus re-route)
14	Pedestrian route improvements on 16th Ave S
*	Bus reroute from Cartleton Ave S to Corson Ave S
*	City-wide Sidewalk Assessment Survey
*	Duwamish MIC Large Vehicle Parking Study
*	Street Tree Inventory & Plantings
* Projects are neighborhood or city-wide and not shown on the map	

Upcoming Projects and Planning Studies in Georgetown (Includes non-SDOT efforts)

-  Spot Project
-  Site Project
-  Corridor Project



Proposed Bicycle Network



	Community Identified Connection		Georgetown
Local Connector Network			
	Existing		Citywide Network Existing
	Proposed		Citywide Network Proposed
	In street minor separation		Neighborhood Greenway
	Neighborhood Greenway		Multi use Trail
	Cycle Track		Cycle Track
	Sharrow		
	Multi use Trail		



DRAFT SHORT LIST PROJECTS FOR GEORGETOWN MOBILITY STUDY	
1	4th Ave Transit Access Improvements (near St Vincent de Paul Food Bank)
2	Intersection Improvement at S Michigan/Corson/ S. Bailey
6	Street Tree Plantings/Improvements
7	Crossing Improvements at 6th Avenue S and S Michigan Street
8	Street landscape and wayfinding improvements on Corson Ave S
11	Pedestrian crossing and sidewalk improvements at Ellis Ave S and S Warsaw St
12	Pedestrian/Bike trail from Corson Ave S to S River St/6 th Ave S.
14	Intersection Improvements at E Marginal and Corson Ave S
17	Pedestrian Access Improvements on 8th Ave S (btwn E Marginal Way and Gateway North Park/Gt. Pump Station site)
18	E Marginal Way Ped/Bike Connection to South Park
20	Pedestrian improvements on 16th Ave S (to South Park Bridge)
22	Traffic calming at 6 th and Orcas

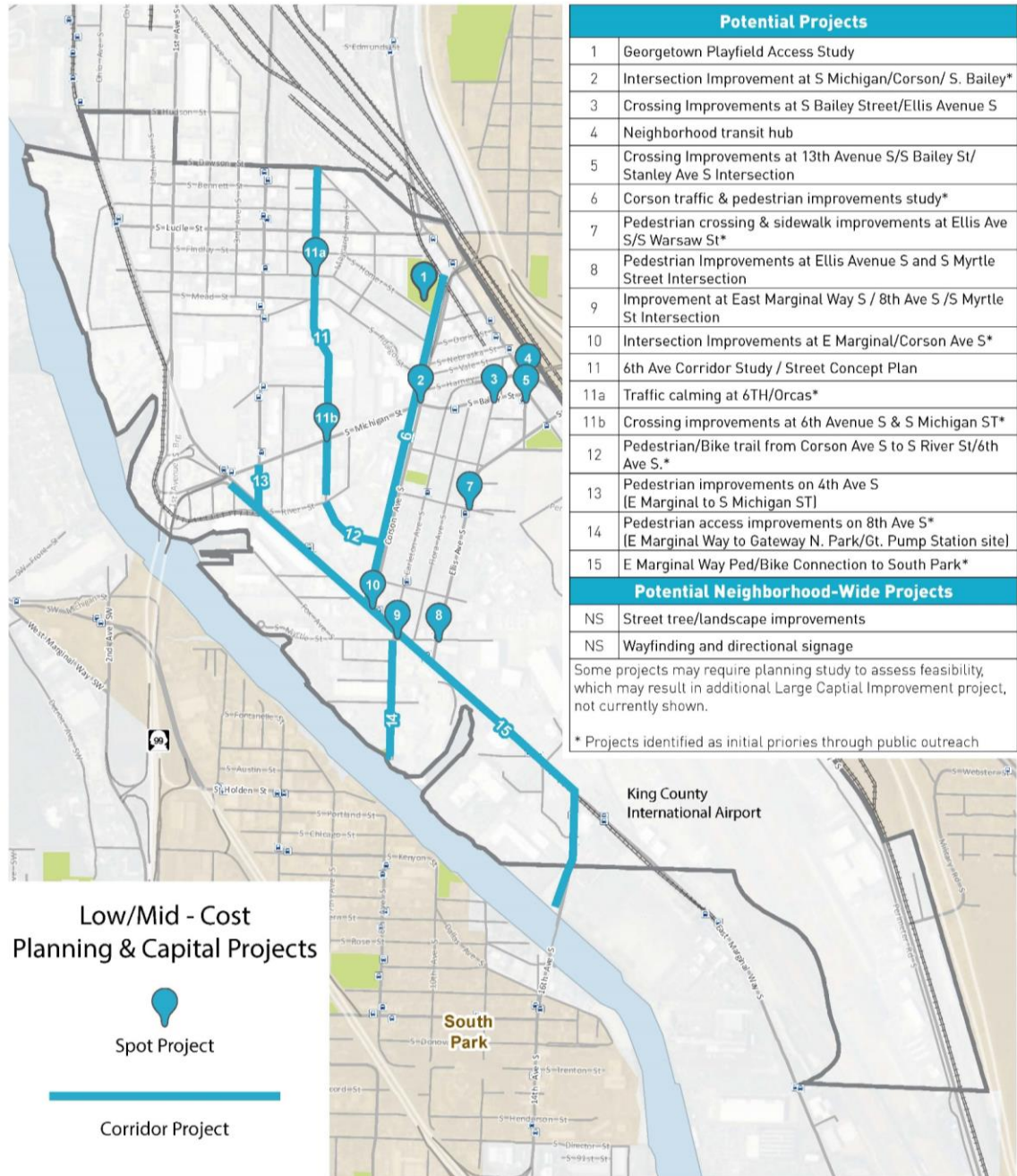
Neighborhood circulation analysis

- Conceptualize movement
- Identify circulation gaps



Preliminary Project List

- Low/mid- cost planning and capital projects
- Identified through modal master plans, other community plans, and outreach efforts
- Several indicated as initial priorities through public outreach



POTENTIAL PROJECT DETAILS

1 Georgetown Playfield Access Study

Identify feasible pedestrian access improvements at the Georgetown Playfield and children's play area.



2 Intersection improvement at S Michigan St/Corson/ S Bailey*

Feasibility study to assess potential intersection improvement options to improve pedestrian, bike and vehicular access and circulation.



3 Crossing Improvements at S Bailey Street/Ellis Avenue S

Crosswalk improvement across S Bailey Street. Requires study of existing midblock crosswalk.



4 Neighborhood transit hub

Development of neighborhood transit hub with enhanced amenities near Old City Hall. Includes Metro routes 124, 107, and 60.



5 Crossing Improvements at 13th Avenue S/S Bailey St/ Stanley Ave S Intersection

Crosswalk improvement across south leg of 13th Avenue S / S Bailey Street / Stanley Avenue S intersection. Provides direct connection between southbound bus stop and Old City Hall.



6 Corson traffic & pedestrian improvements study*

Feasibility study to assess potential intersection improvement options to improve pedestrian, bike and vehicular access and circulation.



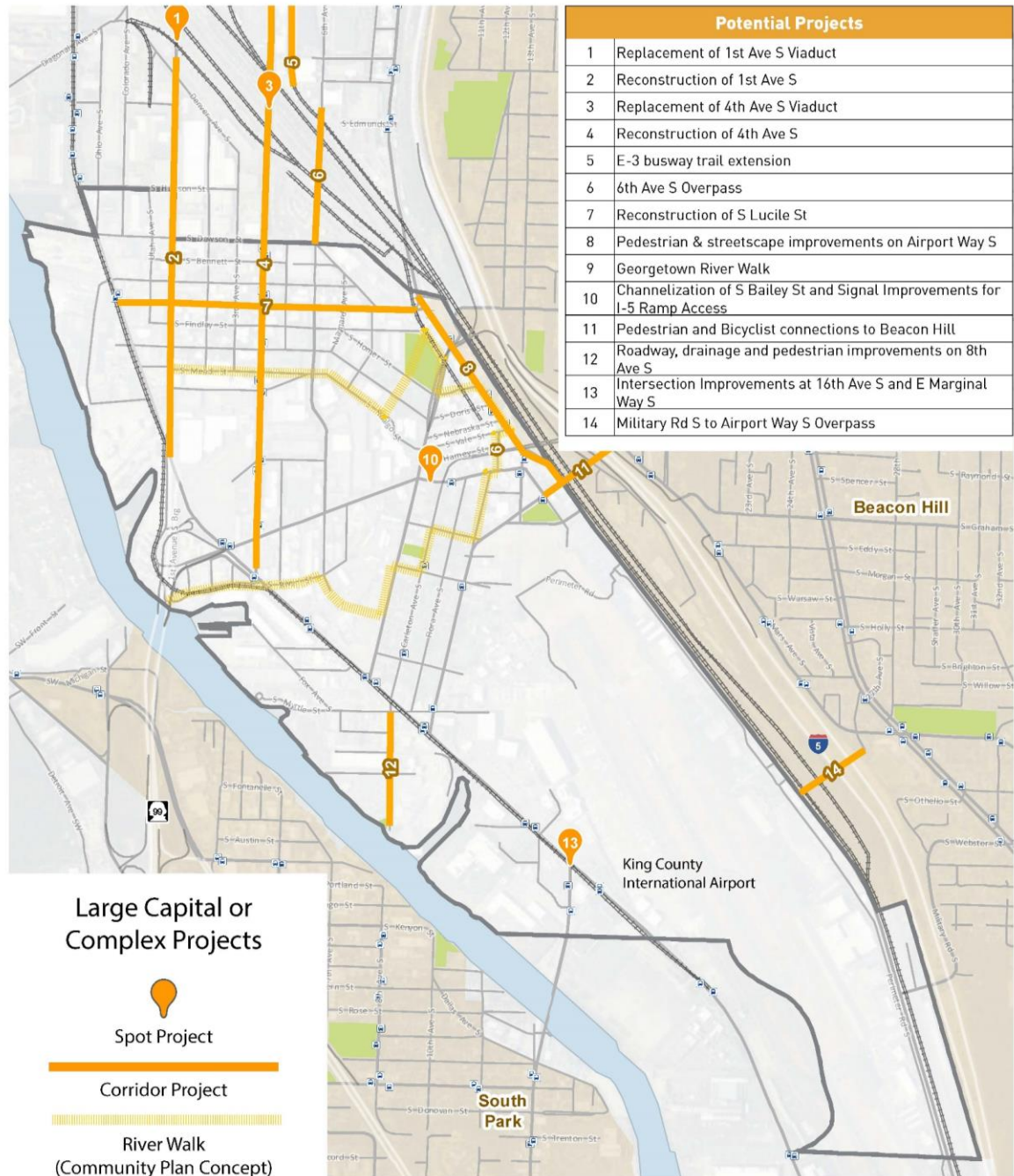
7 Pedestrian improvements at Ellis Ave S / S Warsaw St*

Crossing and sidewalk improvements at intersection adjacent to the Opportunity Skyway school and near a bus drop-off location and Metro bus stop. Improvements may include a new crosswalk, sidewalk and curb ramps improvements, and potential art/placemaking.

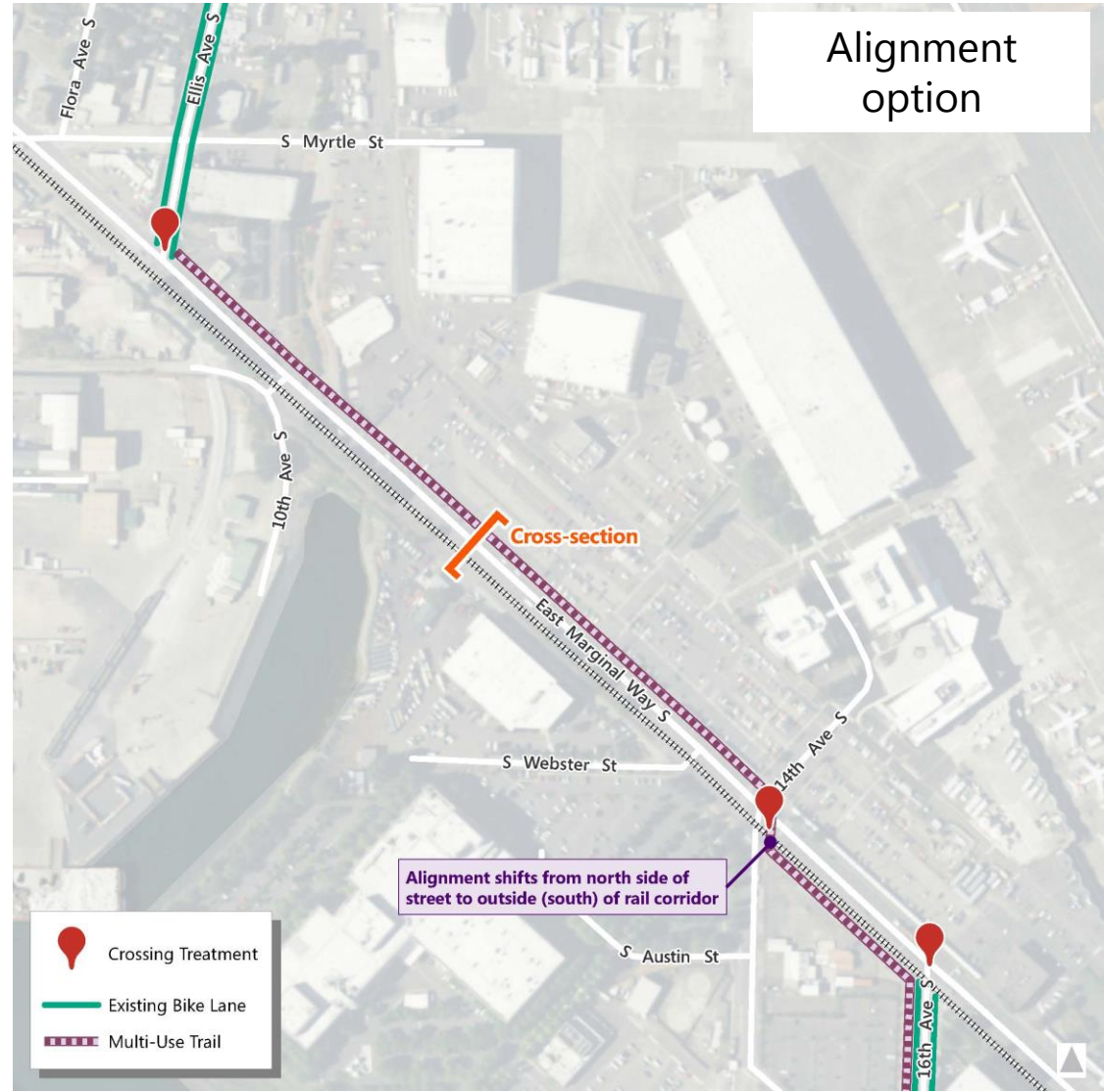


Preliminary Project List

- Large capital or complex projects
- May present opportunities for multimodal improvements
- Identified through modal master plans, other community plans, and outreach efforts



East Marginal Way Existing conditions

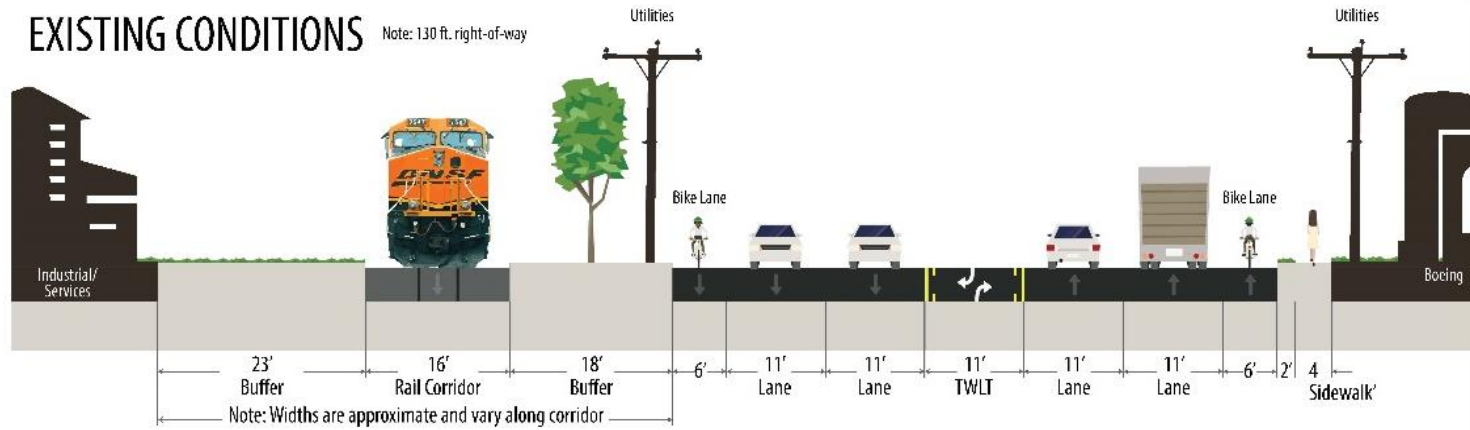


Alignment
option

-  Crossing Treatment
-  Existing Bike Lane
-  Multi-Use Trail

Alignment shifts from north side of street to outside (south) of rail corridor

East Marginal Way Existing conditions



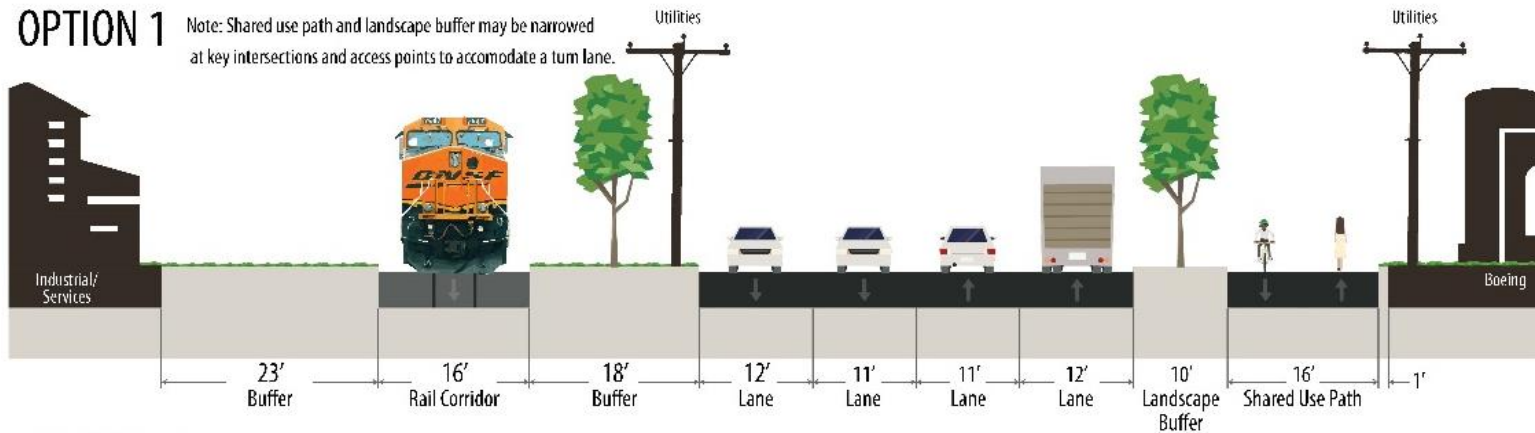
Existing conditions



East Marginal Way Multi-use trail concepts

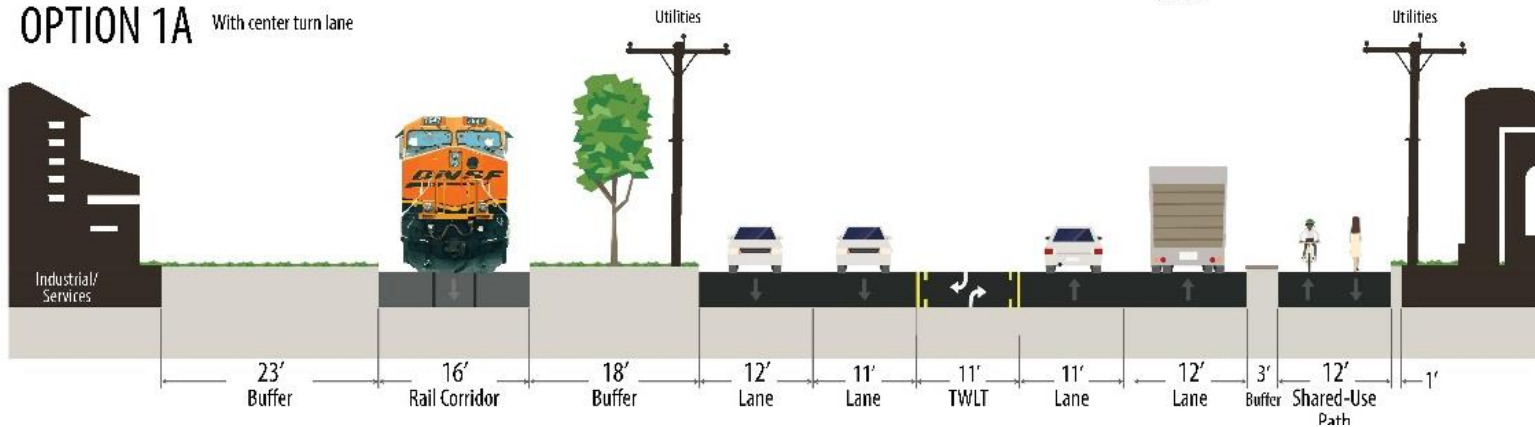
OPTION 1

Note: Shared use path and landscape buffer may be narrowed at key intersections and access points to accommodate a turn lane.



OPTION 1A

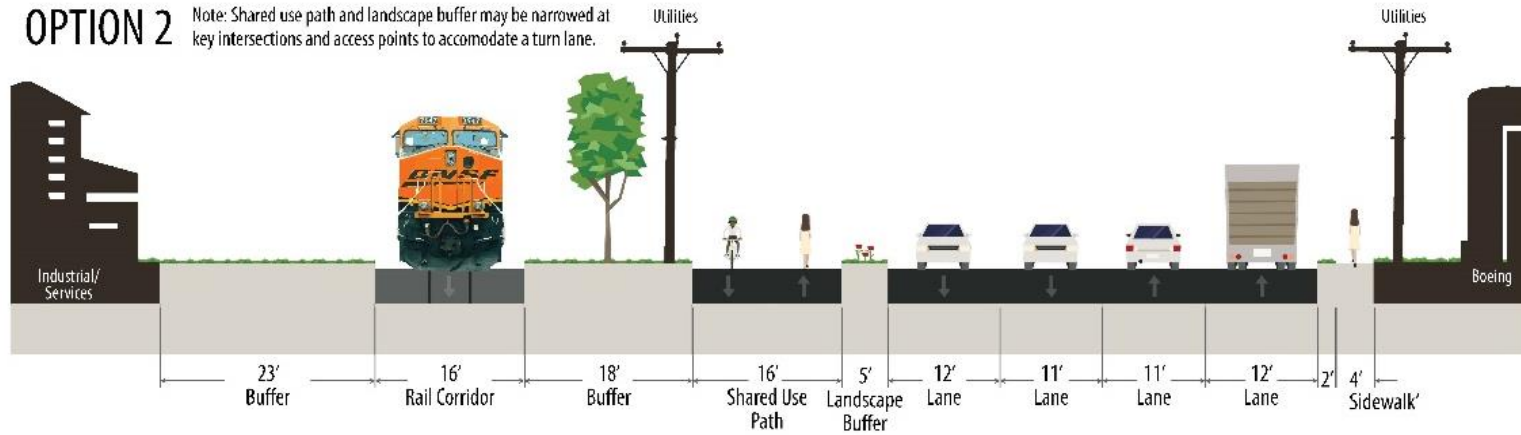
With center turn lane



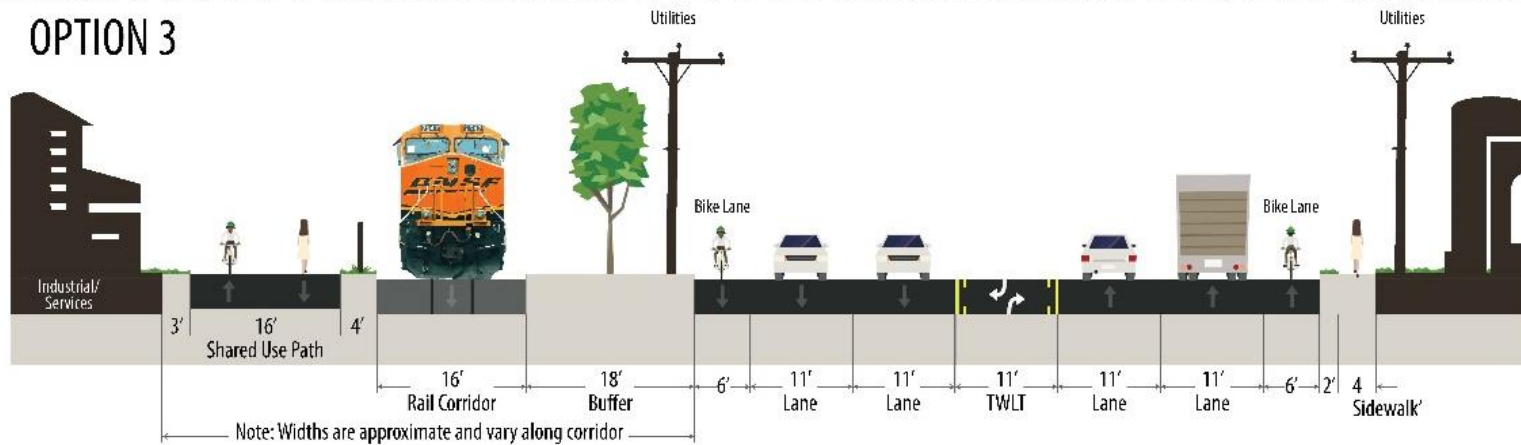
East Marginal Way Multi-use trail concepts

OPTION 2

Note: Shared use path and landscape buffer may be narrowed at key intersections and access points to accommodate a turn lane.



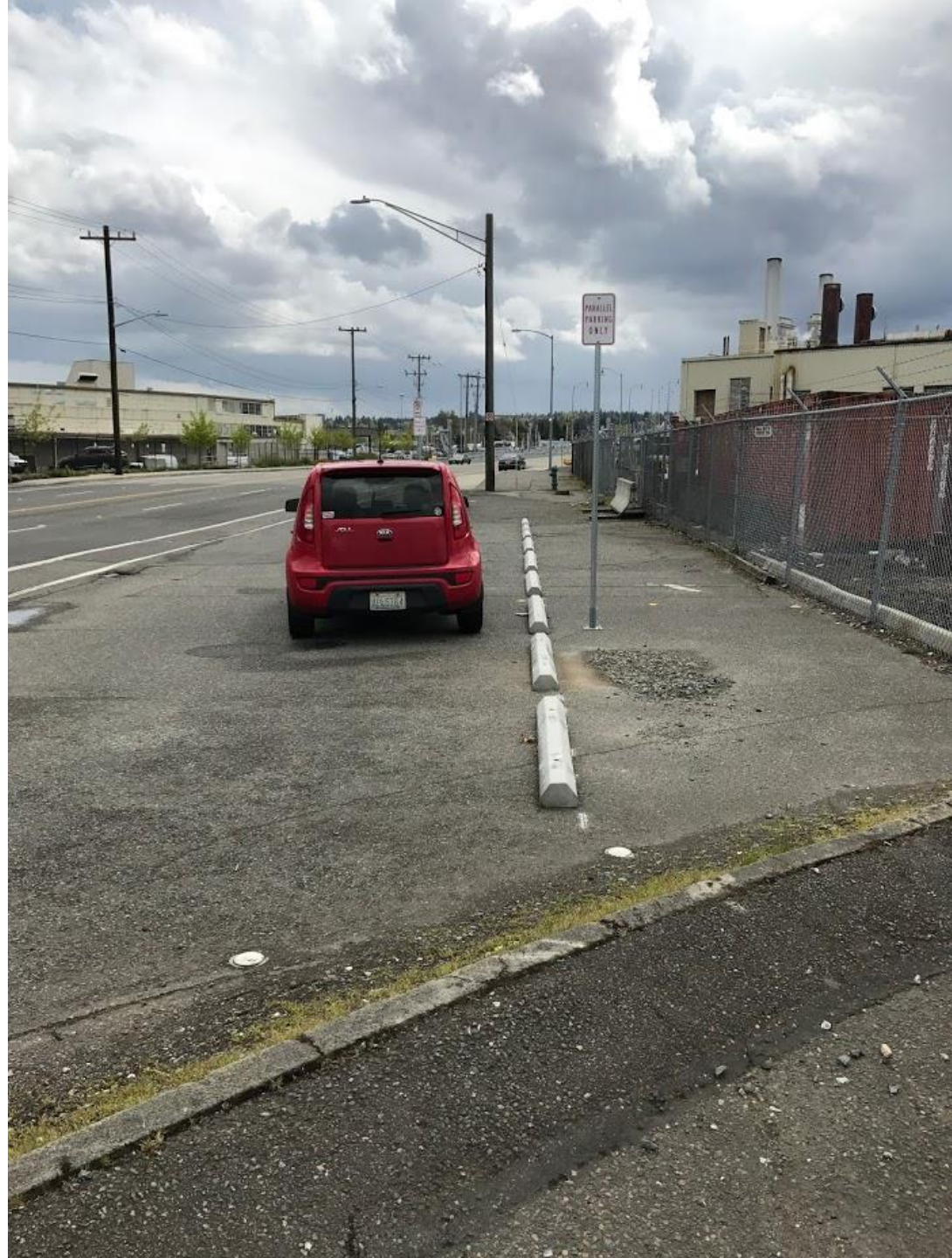
OPTION 3



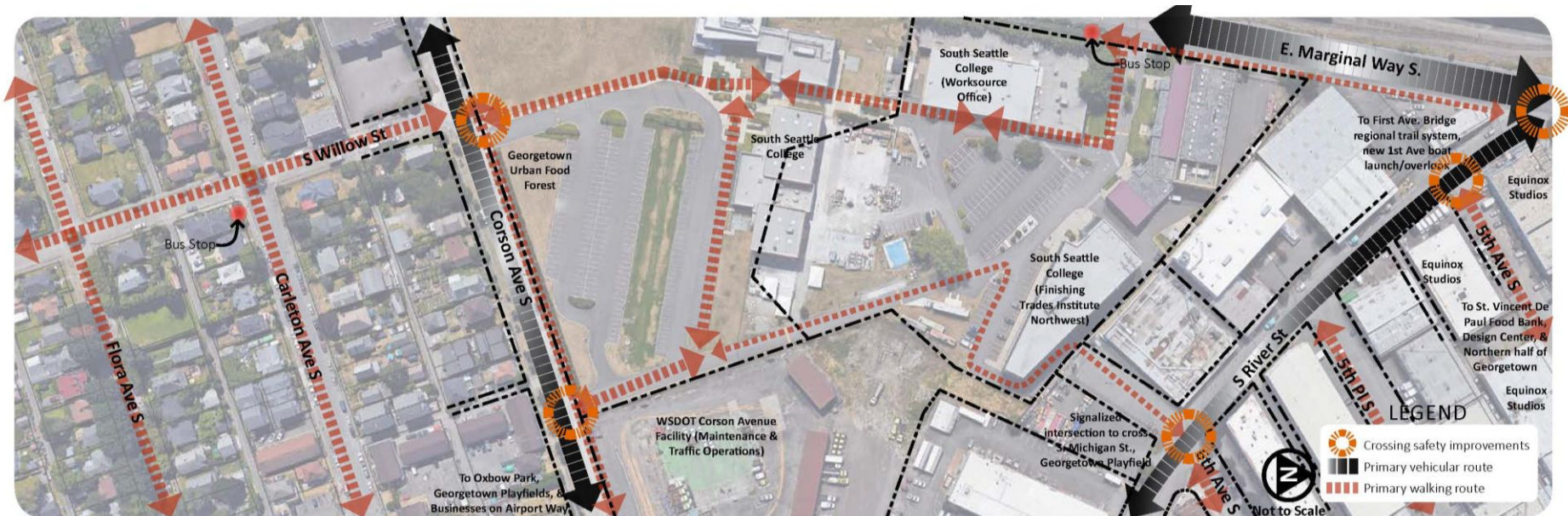
S. 16th St.



Source: Rich Brown

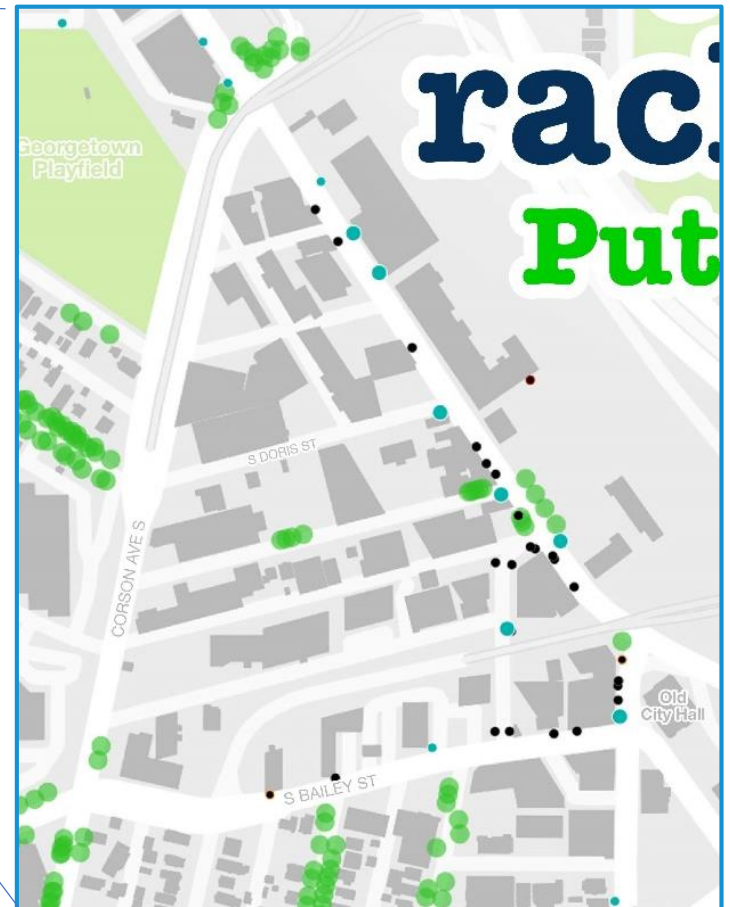


Corson Ave S to S River St connection



Images courtesy of Seattle Parks Foundation Georgetown Open Space Vision Framework

Bicycle rack assessment by Brock Howell



Next steps

Date	Activity/action
March	Review existing conditions
April – July	Public engagement
May – June	Analyze/review project proposals
July – August	Public engagement, Open House July 18, refine proposals, develop draft report per public comment
September	Final report

Questions?

diane.wiatr@seattle.gov | (206) 684-0811

ian.macek@seattle.gov | (206) 684-0633

www.seattle.gov/transportation/GeorgetownMobilityStudy.htm

www.seattle.gov/transportation



Seattle
Department of
Transportation