

TRANSPORTATION LEVY TO MOVE SEATTLE



Seattle Bicycle Advisory Board

Bill LaBorde, SDOT

April 1, 2015

Presentation overview

- Move Seattle
- Levy replacement proposal
- Questions



Our mission, vision, and core values

Mission: deliver a high-quality transportation system for Seattle

Vision: connected people, places, and products

Committed to **5 core values** to create a city that is:

- Safe
- Interconnected
- Affordable
- Vibrant
- Innovative

Yesterday, today, and tomorrow

Current levy – Bridging the Gap



9-year,
\$365
million levy
expires in
2015

Bridging the Gap commitments

Pedestrian/Bike Safety

- Repair or restore 144 blocks of sidewalks
- Build 117 blocks of new sidewalks
- Restripe 5,000 crosswalks
- Create "safe routes to schools" near 30 elementary schools
- Fund neighborhood-identified street improvements
- Add 4 miles of new multi-use paths
- Support the development and implementation of a Pedestrian Master Plan
- Provide funding to implement the Bicycle Master Plan

Major Projects

Fund 3 major capital improvement projects: Spokane Street Viaduct, Mercer Street Corridor, and King Street Station

Maintenance

- Rehabilitate 40-50 stairways
- Resurface, restore, or replace 200 lane-miles of arterial streets
- Rehabilitate or replace 3-5 bridges and seismically retrofit 5 additional bridges
- Prune 25,000 street trees to prevent safety and security hazards
- Plant 8,000 new street trees
- Replace over 50,000 small, faded street and regulatory signs

Transit

- Secure up to 45,000 hours of new Metro Transit service
- Enhance transit and safety improvements on 3 key transit corridors

Transportation Levy to Move Seattle

Proposal aims to:

- Address today's basic needs
- Expand the transportation system to meet tomorrow's needs
- Create a safer, more connected and more integrated system that works for all travelers

Replacement levy proposal

9-year funding breakdown

Safe City: \$350 M

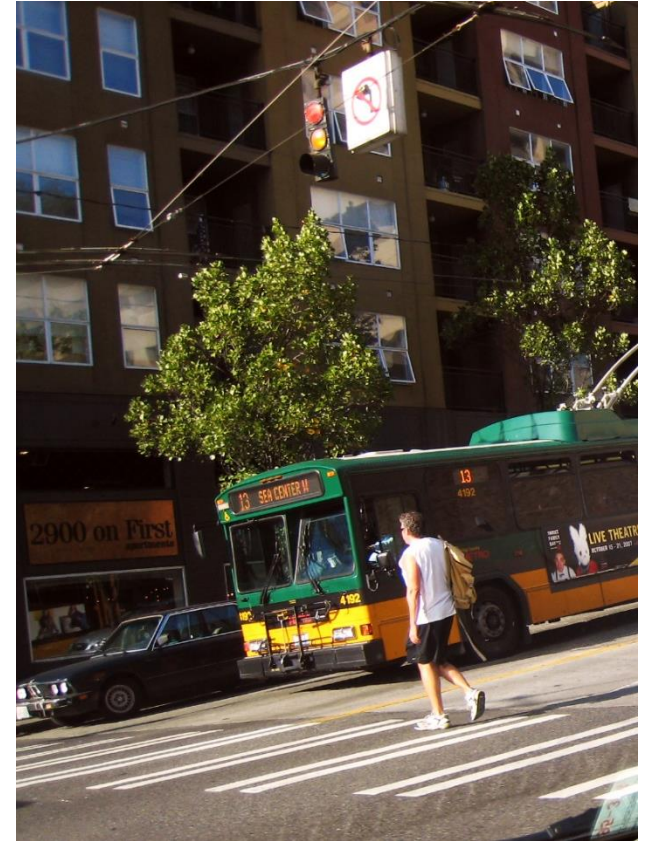
Affordable City: \$275 M

Interconnected City: \$170 M

Vibrant City: \$105 M

9-year total \$900 M

Annual cost to
median household \$275



A safe, affordable, interconnected, vibrant Seattle

A Safe City

Keep our bridges safe

- Eliminate the backlog of bridge spot repairs
- Seismically reinforce 16 bridges
- Replace Seattle's last timber-supported vehicle bridge (Fairview Avenue)
- Plan and design for high priority bridge replacements beginning after 2024 (Ballard)



Ballard Bridge

A Safe City

Implement Vision Zero: a program to eliminate serious and fatal crashes on Seattle streets

- Complete 12-15 corridor safety projects
- Complete 9-12 Safe Routes to School projects each year
- Increase crosswalk striping frequency to a 4-year or better cycle



School crossing guards near Graham Hill Elementary in the Rainier Valley

A Safe City

Protect our most vulnerable travelers – people walking and biking

- Build 50 miles of protected bike lanes and 60 miles of greenways
- Repair up to 225 blocks of damaged sidewalks
- Improve curb ramps and crossing at up to 750 intersections
- Complete the Burke-Gilman Trail Missing Link



Protected bike lane in the U District

An Affordable City

Provide tools to help people get around without the expense of owning a car

Work with:

- businesses to ensure access to transit passes, bike share and car share memberships for commuters
- residents, landlords and developers to ensure access to transit, car share, bike share, and other travel options



People boarding the Route 7 bus along Rainier Ave

An Affordable City

Maintain and modernize 250 lane miles of our hardest-working arterial streets

- Repave/reconstruct up to 180 lane-miles of arterial streets, focused on transit corridors
- Repave 70 lane-miles through spot improvements



15th Ave NE paving project (completed)

An Interconnected City

Modernize outdated streets to give people convenient and affordable travel options

- Complete 7-10 multimodal corridor projects
- Make bus service more reliable through a transit improvement program
- Optimize traffic signal timing on five corridors each year



Madison St bus rapid transit corridor

An Interconnected City

Develop better connections to light rail

- Provide funding for a Link light rail station at Graham Street
- Fund a pedestrian and bicycle bridge over I-5 connecting to light rail in Northgate
- Build pedestrian and bicycle connections to light rail stations



Northgate pedestrian/bicycle bridge

An Interconnected City

Make it easier to walk and bike in Seattle

- Build 100 new blocks of sidewalks
- Pilot new design solutions to make streets without sidewalks safer and more comfortable
- Install 1,500 new bicycle parking spots citywide



On-street bicycle parking in the U District

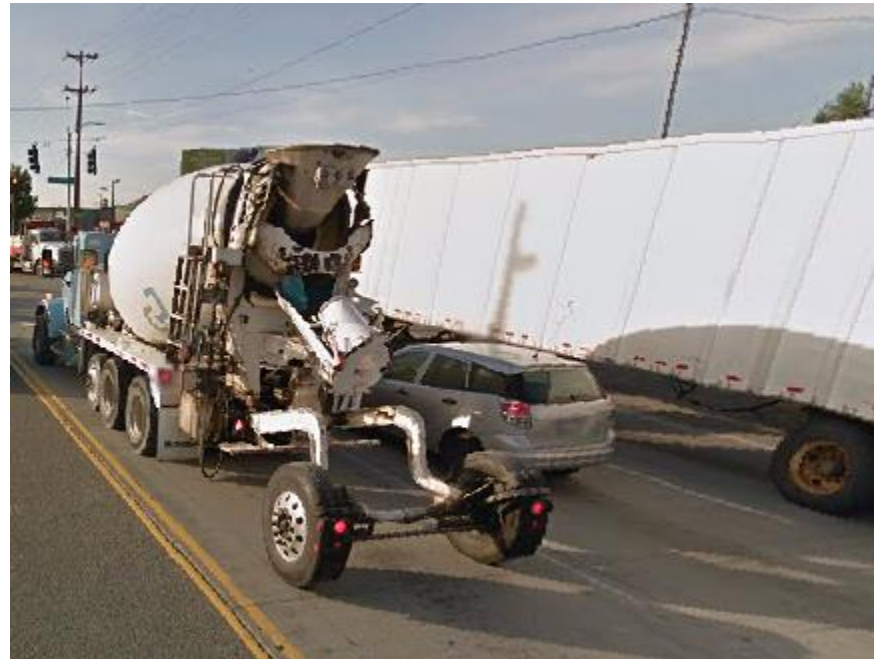


Rendering of potential design solution for streets without sidewalks

A Vibrant City

Improve mobility for freight and delivery vehicles

- Provide local money to design and build the Lander Street Overpass
- Build the East Marginal Way corridor
- Fund a targeted spot improvement program to help freight movement



Cars and trucks on E Marginal Way

A Vibrant City

Invest in neighborhood projects

Complete 20-35 projects submitted by neighborhoods to improve safety, mobility and access and quality of life in those neighborhoods



Rendering of the Georgetown Festival Street, a project funded by the Neighborhood Street Fund

A Vibrant City

Take care of our urban forest and improve drainage in flood-prone communities

- Plant two new trees for every tree removed
- Add new City tree crew to proactively spot prune
- Partner with Seattle Public Utilities to address drainage issues in flood-prone South Park and Broadview



City crews planting street trees



Flooding in South Park

Bridging the Gap and Levy to Move Seattle comparison table of commitments

Category	Bridging the Gap	Levy to Move Seattle
Paving	200 miles	250 miles
Seismic bridge retrofit	5	16
Rehab/replace bridges	5	2
Plan and design new bridges	Not a BTG commitment	10
Repair sidewalks	144 blocks	225 blocks
New sidewalks	117 blocks	100 + blocks in South Park and Broadview
Crossing improvements and curb ramps	Fund and implement PMP	750 intersections
Stairway rehabilitation	40-50	45
Crosswalks (remarking)	5,000	12,000
Low-cost pedestrian improvements	Not a BTG commitment	50-100 blocks

Bridging the Gap and Levy to Move Seattle comparison table of commitments

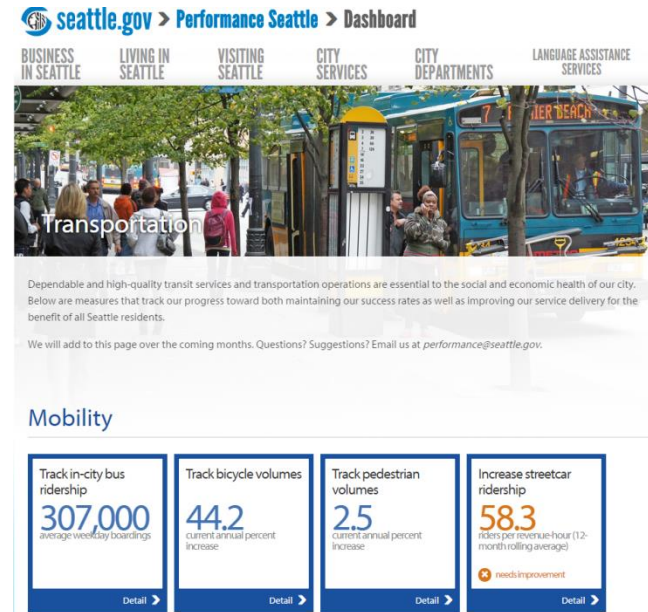
Category	Bridging the Gap	Levy to Move Seattle
Safe Routes to School	30 schools	81-108 (100% of Seattle public schools)
Safety corridors	Not a BTG commitment 3	12-15
Multi-use paths	4 miles	Burke Gilman – 1.5 miles
Bike lanes	Fund and implement BMP	50 miles of protected bike lanes 60 miles of greenways
Bike accessibility (parking)	Not a BTG commitment	1,500 spaces
Freight spot improvements	\$0	\$13.5 M
New trees	8,000	2,700
Trees pruned	25,000	27,000
Optimize signals	0	45 corridors

Bridging the Gap and Levy to Move Seattle comparison table of commitments

Category	Bridging the Gap	Levy to Move Seattle
Multimodal corridors	0	7-10
Transit corridors	3	7
Access to transit	1 (King St Station; CPT funded)	2 (Graham St Station, Northgate ped/bike bridge)
Neighborhood Street Fund	30 completed	20-35 projects
Comprehensive drainage coordination	0	2 neighborhoods (South Park and Broadview)

Accountability

- Online performance dashboard monitoring
- Change controls and project tracking
- Levy oversight committee, appointed by Mayor and Council



PM Seattle Department of Transportation

Project Status Report as of 3/19/15

Project-TC365440 AAC; Report Level-Management; Indicator-Red, Yellow, Green, Gray; All Milestones

Schedule	Cost	Scope	Subproject ID	Subproject Title	Total Cost Est	Current Milestone	Duration	Construction % Complete	Right-of-Way	Grant Funding
G	G	Y	TC36544047	AAC - 1st Ave	254,467	90%			ROE	
R	G	G	TC36544046	AAC - Holman Road	3,405,613	PC	6 Mos		None	FHWA
G	G	G	TC36544051	AAC - Meridian Ave N	2,890,000	30%	3 Mos		TCE	
G	G	G	TC36544044	AAC - NE 125th/Sand Point Way	5,025,977	SC	4 Mos	100% <div style="width: 100%; background-color: black;"></div>	None	FHWA
R	Y	G	TC36544042	AAC - Northgate/N 105th	17,559,958	SC	1 Yr 4 Mos	100% <div style="width: 100%; background-color: black;"></div>	TCE, ROE, Perm Ease	State
G	G	G	TC36544055	AAC - Renton Ave S - Phase I	3,340,000	100%	3 Mos		None	FHWA
G	G	G	TC36544056	AAC - Renton Ave S - Phase II	3,935,000	DS	3 Mos			
G	G	G	TC36544050	AAC - Roosevelt	7,195,498	90%	9 Mos		TCE	FHWA
G	G	G	TC36544052	AAC - Spokane St	1,845,000	DS	3 Mos		None	

2015 Schedule

March	April	May	June	July	August
Public engagement period					
	Incorporate public feedback				
		★ Mayor submits proposal to City Council			
				★ Possible City Council action	
					★ Proposal to King County

Public involvement opportunities

- Survey
- Website
- Three open houses
- Social media
- Community briefings
- Drop-in sessions, coffees
- Widespread media coverage and ethnic media
- Engagement toolkit
- E-mail list



Questions?

<http://www.seattle.gov/LevytoMoveSeattle.htm>

