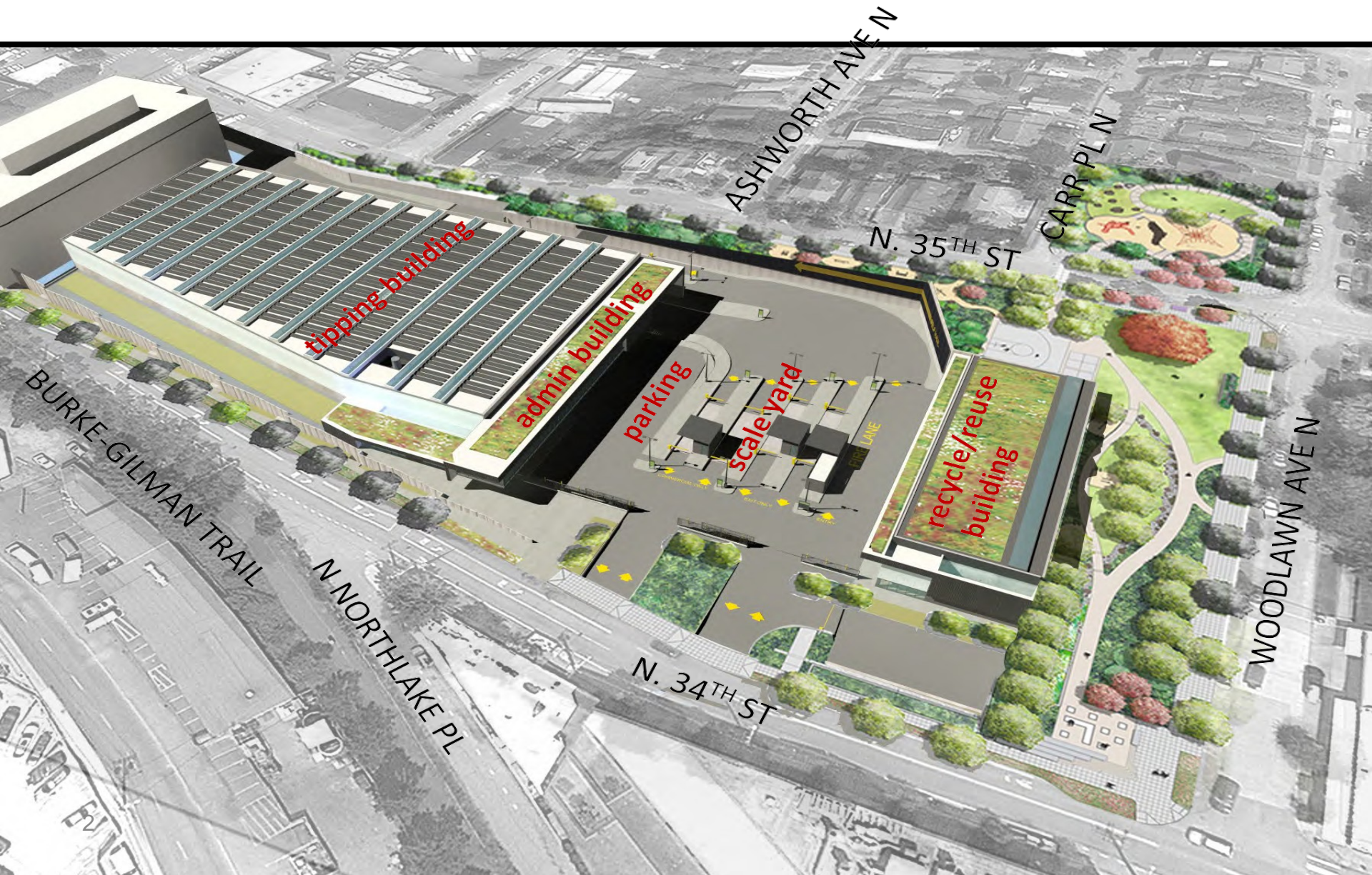


Site Maps
for
Collection of Reusable Items
At the North Transfer Station

Building & Site Components



Site Layout

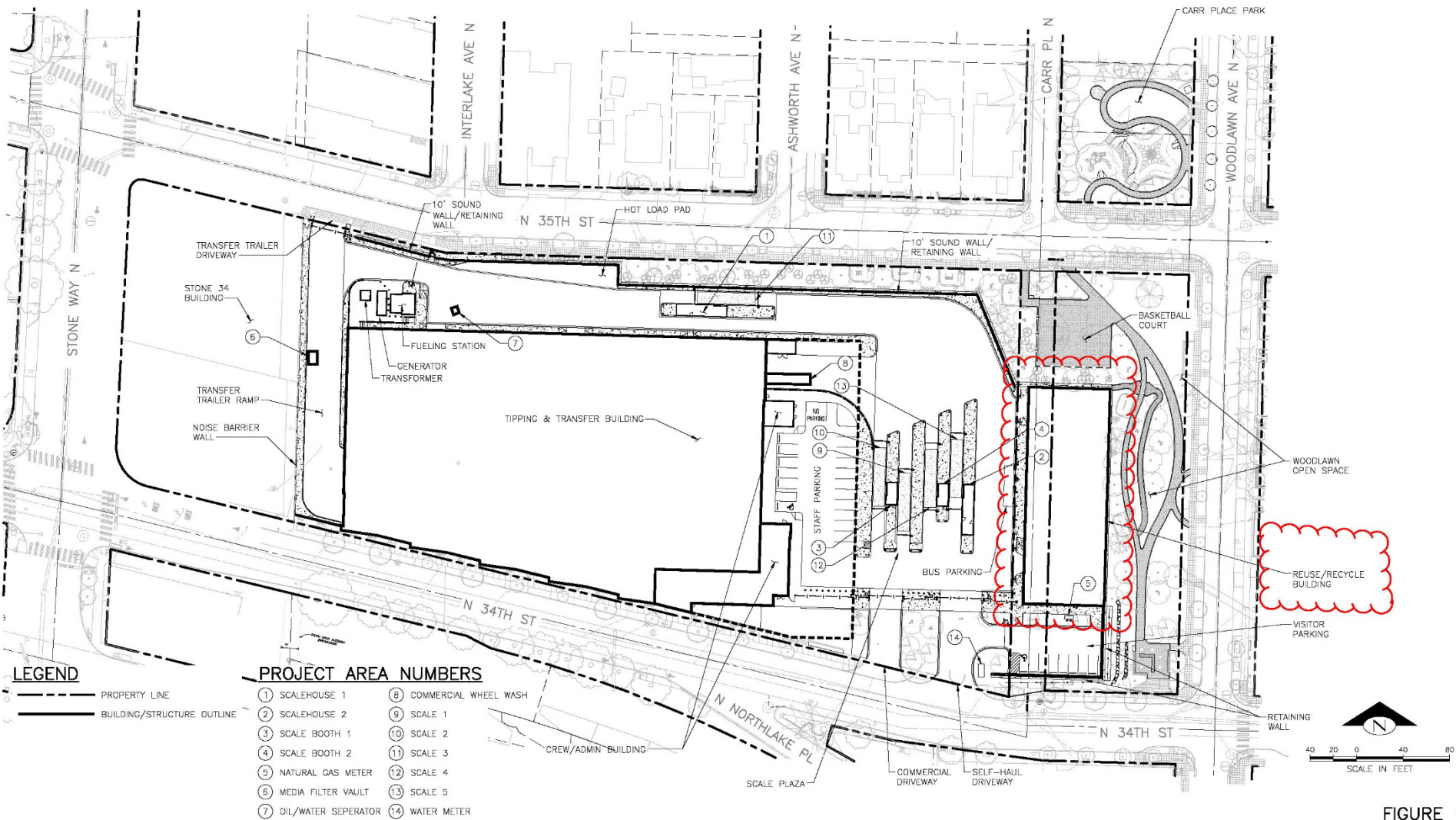


FIGURE 1
FACILITY GENERAL ARRANGEMENT PLAN

The site plan illustrates the layout of the Woodlawn Transfer Station, including the Tipping & Transfer Building, Staff Parking, Crew/Admin Building, Scale Plaza, Woodlawn Open Space, Reuse/Recycle Building, and Visitor Parking. The plan is bounded by N 35th St to the north, N 34th St to the south, Stone Way N to the west, and Woodlawn Ave N to the east. A legend in the bottom left corner defines the vehicle types and their corresponding flow arrows: Self-Haul Vehicles (green arrow with 'SH'), Commercial Vehicles (red arrow with 'CV'), and Transfer Trailers (blue arrow with 'TT'). The flow paths are as follows: Transfer Trailers (TT) enter from the west on Stone Way N, travel south, and exit at the Transfer Trailer Entry/Exit. Self-Haul Vehicles (SH) enter from the north on N 35th St, travel south through the Tipping & Transfer Building, and exit at the Self-Haul Entry/Exit on the east side. Commercial Vehicles (CV) enter from the north on N 35th St, travel south through the Tipping & Transfer Building, and exit at the Commercial Entry/Exit on the east side. The plan also shows the location of the Staff Parking, Crew/Admin Building, Scale Plaza, Woodlawn Open Space, Reuse/Recycle Building, and Visitor Parking.

SH 4 SELF HAUL VEHICLES
CV COMMERCIAL VEHICLES
TT TRANSFER TRAILERS

[illegible]