

Portage Bay 138 Gate Retrofit & Pump Station 20 Improvement Project

Protecting water quality and improving service reliability in your neighborhood.

Project Overview

Seattle Public Utilities is working on a citywide effort to improve the health of our waterways by reducing combined sewer overflows (CSOs). During heavy rains, the combination of stormwater and sewage may overwhelm our system and overflow into our waterways – causing CSOs. CSOs impact our regional water quality and are a public health risk.

This project will involve installing an automated gate on underground pipes to better manage flows in wet weather to help reduce occurrences of CSOs.

To minimize construction impacts, SPU combined the gate retrofit work with a project to make improvements to Pump Station 20, which is located at the street end of E Shelby St.



Photo from street end of E Shelby St

Schedule

Construction is scheduled to begin in March 2020 and should take about 7 to 9 months.

Note, the construction schedule and duration are dependent on weather and other factors.

What to Expect During Construction?

- Construction noise, dirt, dust, and vibration
- Increased construction traffic and large equipment staged in the area
- Residents will continue to have pedestrian access to their homes throughout construction
- Partial road closure and parking restrictions near the work area
- Typical work hours will be weekday, daytime hours, but crews may need to perform work during evenings and/or weekends
- SPU has worked with garbage/compost/recycling services, emergency services, and mail services to coordinate access during construction
- Following construction, the contractor will perform site restoration

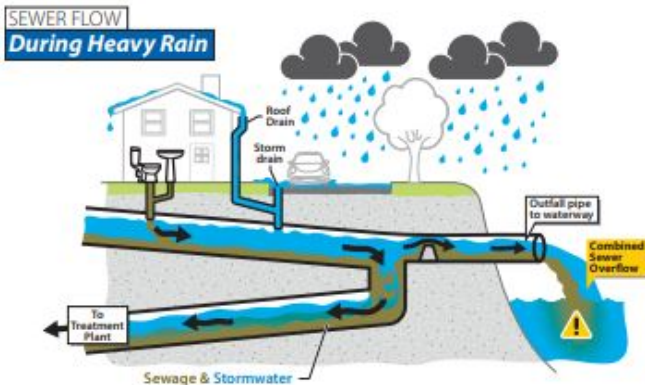


Illustration of CSO Event

Benefits to the Community

- Protect public health and the environment
- Improve water quality in Portage Bay
- Reduce risk of pump station failure
- Comply with industry standards and regulations
- Maintain safe working conditions for SPU crews

Stay in Touch

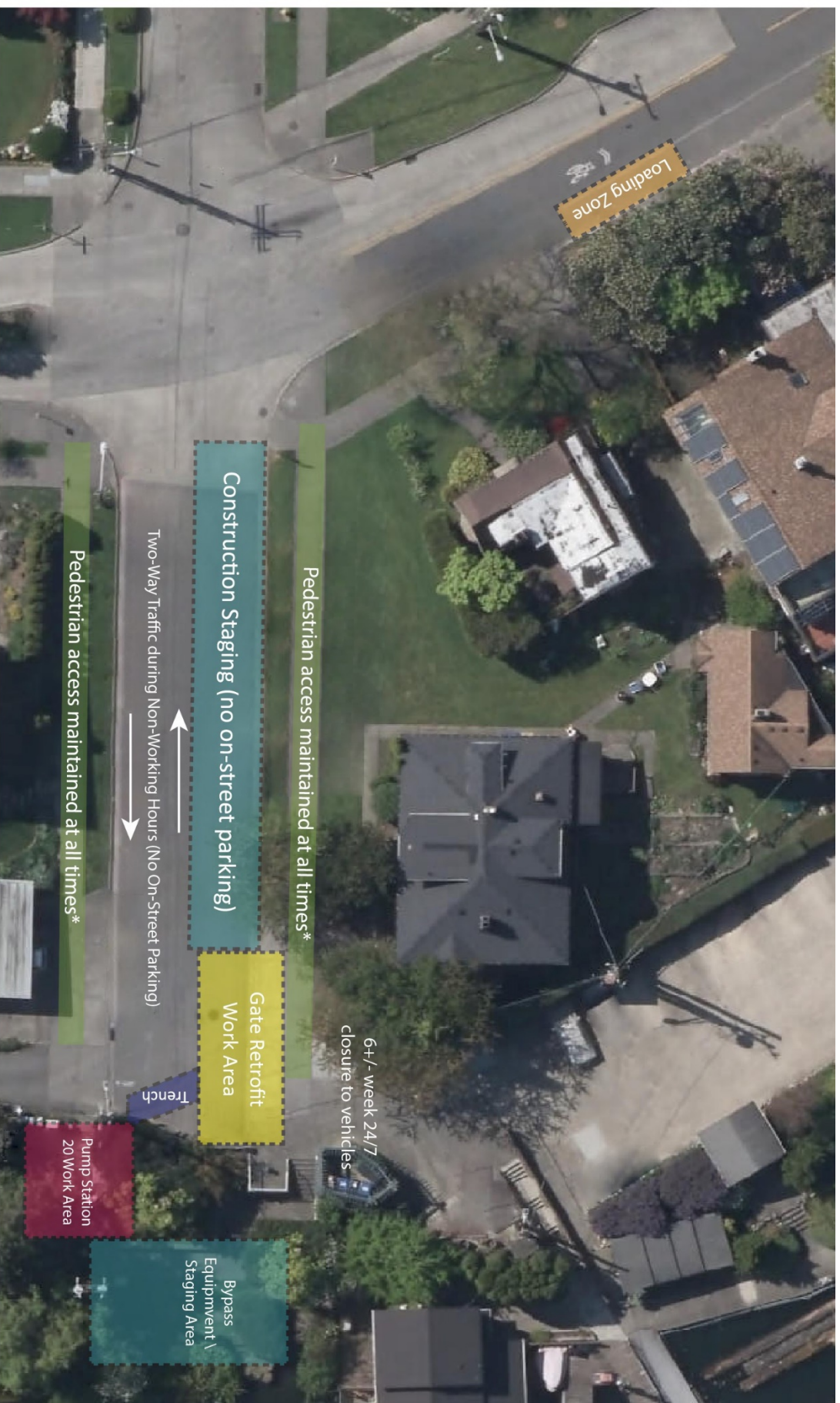
SPU will provide updates to the community prior to and during construction. Learn more and sign-up for the email list by visiting: www.seattle.gov/utilities/environment-and-conservation/projects/portage-bay-gate-retrofit

Project Contact

Josh Campbell, Project Manager

josh.campbell@seattle.gov | (206) 684-5257

<http://www.seattle.gov/utilities/environment-and-conservation/projects/portage-bay-gate-retrofit>



Loading Zone

Temporary 15-minute load/unload zone

Gate Retrofit Work Area

6 +/- week closure / no vehicle access during work

Pump Station 20 Work Area

Work will occur within pump station.

Staging

Equipment staging areas. No on-street parking for duration of project.

Trench

Trenching and electrical conduit installation (<1 week).

*Pedestrian detours may be in place at times, please follow posted detour routes.

**For the duration of the project there will be a 15-minute load/unload zone at the NE corner of Boyer Ave E and E Shelby St to allow residents to pick up and drop off items closer to their homes.

***Access to driveways will be maintained from 4 p.m. to 8 a.m. on workdays to allow for easy travel to/from work, school, and home (excluding 24-hr/day closures for gate retrofit work and pavement restoration).

****Following construction, there will be 24/7 vehicle access closure for pavement restoration (<1 week).