

GARBAGE REPORT

4th Quarter 2015

Seattle Public Utilities, Economic Services Section

Report Date: February 5, 2016

Phone: (206) 684-4143

Total City Tonnage Breakdown

Self Haul¹

Q4 Self Haul Cars ²	460 Tons	0.4% increase vs. same period in 2014
2015 Cumulative Self Haul Cars:	2,190 Tons	11.9% decrease vs. same period in 2014
Q4 Self Haul Trucks ³ :	13,475 Tons	6.9% increase vs. same period in 2014
2015 Cumulative Self Haul Trucks:	58,748 Tons	6.1% increase vs. same period in 2014
2015 Cumulative Self Haul Cars & Trucks:	60,938 Tons	5.3% increase vs. same period in 2014

Residential

Q4 Single Family:	13,340 Tons	10.8% decrease vs. same period in 2014
2015 Cumulative Single Family:	52,529 Tons	12.1% decrease vs. same period in 2014
Q4 Multi Family:	12,602 Tons	4.8% decrease vs. same period in 2014
2015 Cumulative Multi Family:	49,443 Tons	5.7% decrease vs. same period in 2014
Q4 Total Residential:	25,942 Tons	8.0% decrease vs. same period in 2014
2015 Cumulative Total Residential:	101,972 Tons	9.1% decrease vs. same period in 2014

Commercial

Q4 Commercial:	35,469 Tons	2.9% decrease vs. same period in 2014
2015 Cumulative Commercial:	139,557 Tons	0.1% increase vs. same period in 2014

Total Tons Collected

Q4 Total Collected:	75,346 Tons	3.2% decrease vs. same period in 2014
2015 Cumulative Total Collected:	302,467 Tons	2.3% decrease vs. same period in 2014

Total Tons Delivered To Arlington⁴

Q4 Total Delivered:	76,392 Tons	2.3 % decrease vs. same period in 2014
2015 Cumulative Total Delivered:	302,427 Tons	1.8 % decrease vs. same period in 2014

Selected Statistics

Average Monthly Pounds Garbage Collected per Household YTD

Garbage Can Customers: (Single Family)	53 lbs/hh	(164,381 hhs)	12.5% decrease vs same period in 2014
Garbage Dumpster Customers (Multi Family)	57 lbs/hh	(146,201 hhs)	9.4% decrease vs same period in 2014

Recycling & Disposal Station Self Haul Garbage Rates⁵

Cars: \$30.00 per trip Trucks: \$145.00 per ton (\$30.00 minimum)

¹ There have been fewer Self Haul tons largely due to the closure of the North Recycle & Disposal Station on Jan 20, 2014 for a rebuild.

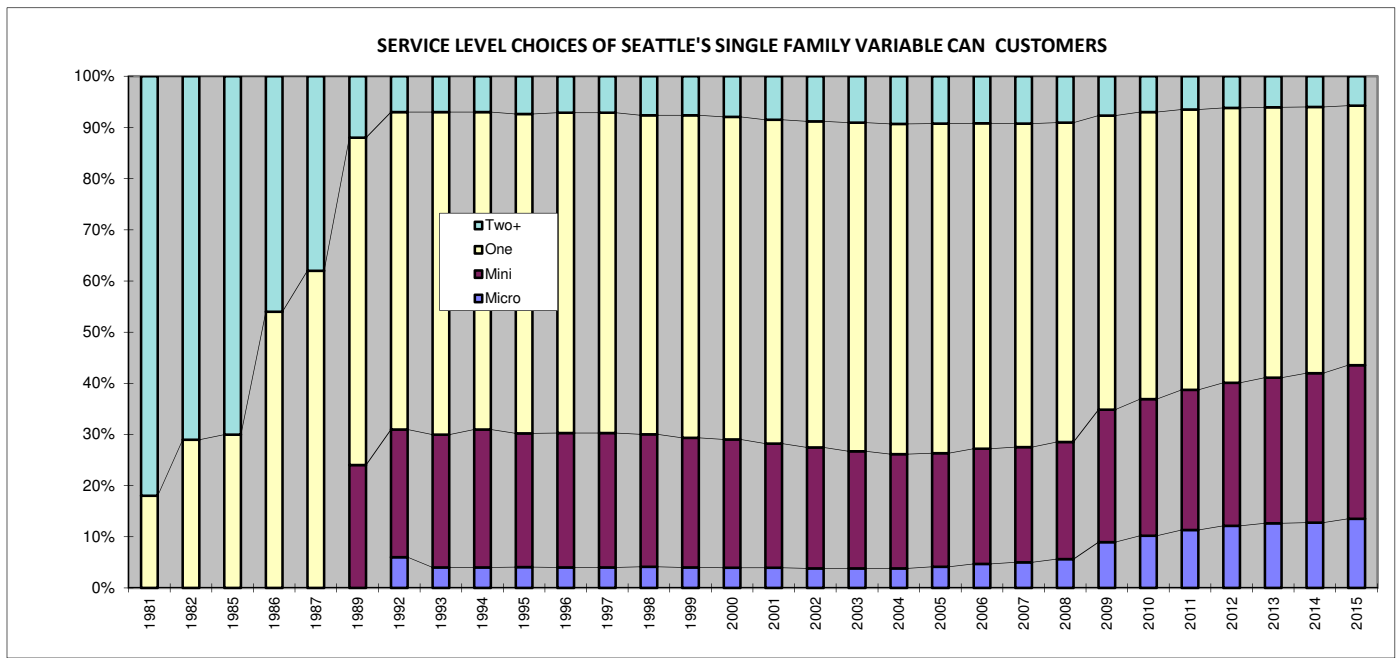
² Beginning Feb 2014 car trips are weighed. Prior to Feb 2014, car weights were calculated based on composition study results. Average weighed car trips were 280 pounds/car for Q1 2014 as compared to 480.8 pounds/car that were used from 2009 to present based on the 2008 waste composition study.

³ An estimated 38% of the self-haul truck tons are commercial according to a waste stream sampling study conducted in 2012.

⁴ Total tons collected not equal to total tons delivered due to operational factors.

⁵ Vans & pickup trucks pay the per ton truck rate.

Variable Can Service Levels for Single Family Can Customers



	Micro	Mini	One	Two+
1981			18.00%	82.00%
1982			29.00%	71.00%
1985			30.00%	70.00%
1986			54.00%	46.00%
1987			62.00%	38.00%
1989		24.00%	64.00%	12.00%
1992	6.00%	25.00%	62.00%	7.00%
1993	4.00%	26.00%	63.00%	7.00%
1994	4.00%	27.00%	62.00%	7.00%
1995	4.06%	26.15%	62.44%	7.35%
1996	4.04%	26.23%	62.59%	7.14%
1997	4.04%	26.23%	62.59%	7.14%
1998	4.16%	25.88%	62.35%	7.61%
1999	4.06%	25.60%	63.62%	7.72%
2000	3.93%	25.08%	63.02%	7.97%
2001	3.96%	24.24%	63.32%	8.49%
2002	3.85%	23.62%	63.72%	8.82%
2003	3.84%	22.85%	64.23%	9.08%
2004	3.86%	22.31%	64.54%	9.30%
2005	4.13%	22.22%	64.37%	9.28%
2006	4.72%	22.49%	63.57%	9.21%
2007	5.05%	22.50%	63.17%	9.28%
2008	5.66%	22.85%	62.45%	9.04%
2009	8.93%	25.89%	57.51%	7.67%
2010	10.21%	26.69%	56.08%	7.02%
2011	11.31%	27.45%	54.72%	6.53%
2012	12.13%	27.98%	53.68%	6.21%
2013	12.62%	28.49%	52.85%	6.04%
2014	12.75%	28.66%	52.58%	6.02%
2015	13.52%	30.02%	50.71%	5.75%

Monthly Variable Can Rates

Micro (12 gal)	\$20.60
Mini (19 gal)	\$25.25
32- gallon can (1 can)	\$32.90
64-gallon cart (2 cans)	\$65.75
96-gallon cart (3 cans)	\$98.65
Each Add'l Can	\$10.45

Residential Dumpster Service

Most Common Monthly Rate*
\$207.84

*This is the rate for a one cubic yard un-compacted container picked up once per week. Residential dumpster service rates vary based on the number and size of containers and the number of pickups per week.

CITY OF SEATTLE GARBAGE TONNAGE REPORT

		SELF HAUL			RESIDENTIAL						COMMERCIAL GARBAGE						GRAND							
		Self Haul ²³		Total	CS ¹⁹		WM		TOTALS				CS			Rabanco			WM	TOTAL	TOTAL			
Year	Month	Cars ²	Trucks	Self Haul	City Stations	Eastmont/ Lander ²⁰	City Stations	East-mont	Single Family	SF Lbs/HH	Multi Family	MF Lbs/HH	Total Residential	City Stations	East-mont	Recology ²²	City Stations	Lander ²¹	East-mont	City Stations	Lander	East-mont	COMMERCIAL	GARBAGE
2014	1	418	4,747	5,165	4,589	223	4,603	212	5,248	64	4,379	64	9,627	3,234	2,414			518		2,903		2,176	11,244	26,036
2014	2	141	3,556	3,697	4,236	0	4,113	0	4,369	54	3,979	58	8,348	5,043	0			420		4,203		370	10,036	22,080
2014	3	181	4,574	4,755	4,533	4	4,525	0	4,746	58	4,316	63	9,062	5,625	13			456		4,674		440	11,208	25,025
2014	4	192	4,939	5,130	4,767	0	4,654	6	4,977	61	4,451	65	9,427	5,613	2			464		4,895		279	11,252	25,810
2014	5	228	5,044	5,272	4,785	0	4,706	16	5,097	62	4,411	64	9,507	5,715	0			473		4,840		226	11,253	26,032
2014	6	219	4,815	5,034	4,667	3	4,516	0	4,900	60	4,285	62	9,186	5,848	3	367		462		4,639		225	11,543	25,762
2014	7	220	5,038	5,258	5,058	0	4,957	0	5,401	66	4,614	67	10,015	6,043	0	367		492		5,121		242	12,265	27,538
2014	8	224	5,175	5,399	4,557	0	4,581	0	4,918	60	4,220	61	9,138	6,111	0	485		452		4,854		232	12,135	26,672
2014	9	206	4,869	5,076	4,914	0	4,790	0	5,155	63	4,550	65	9,704	5,934	0	437		478		4,909		222	11,979	26,759
2014	10	169	4,597	4,767	4,984	0	4,883	0	5,228	64	4,639	66	9,867	6,136	0	565		500		5,240		255	12,696	27,329
2014	11	153	3,874	4,027	4,407	0	4,244	5	4,550	56	4,106	58	8,656	5,559	0	539		441		4,635		278	11,453	24,136
2014	12	136	4,132	4,268	4,848	0	4,825	0	5,183	63	4,491	63	9,674	6,028	0	618		526		4,891		330	12,393	26,335
2015	1	147	4,685	4,832	4,304	0	4,207	0	4,498	55	4,013	56	8,511	5,471	0	586		499		4,573		264	11,393	24,736
2015	2	157	4,550	4,707	3,966	0	3,757	0	3,975	49	3,748	52	7,723	5,189	0	268		426		4,251		316	10,450	22,880
2015	3	176	4,847	5,023	4,405	0	4,178	0	4,354	53	4,229	59	8,583	5,654	0	533		469		4,616		319	11,592	25,198
2015	4	176	4,739	4,915	4,279	0	4,077	0	4,338	53	4,017	56	8,356	5,503	0	553		472		4,643		445	11,615	24,886
2015	5	230	5,178	5,408	4,189	0	3,956	0	4,178	51	3,967	55	8,145	5,552	0	419		460		4,399		472	11,301	24,853
2015	6	202	5,175	5,377	4,515	0	4,226	0	4,460	54	4,281	59	8,742	5,832	0	298		497		4,742		541	11,909	26,028
2015	7	207	5,462	5,669	4,502	2	4,342	0	4,578	56	4,268	59	8,846	5,930	5	449		510		4,852		412	12,157	26,672
2015	8	228	5,418	5,646	4,258	9	4,044	0	4,257	52	4,054	56	8,311	5,655	28	461		478		4,564		475	11,662	25,619
2015	9	208	5,220	5,428	4,541	0	4,273	0	4,551	55	4,263	59	8,814	5,663	3	676		506		4,656		504	12,009	26,251
2015	10	154	4,977	5,131	4,348	2	4,086	0	4,320	53	4,116	56	8,436	5,550	1	506		494		4,672		647	11,870	25,438
2015	11	168	4,276	4,443	4,279	8	4,117	3	4,320	53	4,087	56	8,407	5,300	1	598		507		4,502		639	11,547	24,397
2015	12	138	4,222	4,360	4,644	0	4,450	4	4,700	57	4,398	60	9,098	5,533	0	523		567		4,926		504	12,052	25,511
Total 2015		2,190	58,748	60,938	52,231	21	49,713	8	52,529	53	49,443	57	101,972	66,831	38	5,870		5,884		55,394		5,539	139,557	302,467
Total 2014		2,487	55,360	57,847	56,344	230	55,396	241	59,772	61	52,439	63	112,211	66,888	2,431	3,378		5,680		55,804		5,275	139,457	309,515
Total 2013		6,569	67,450	74,018	52,050	3,667	50,889	4,233	60,302	62	50,537	63	110,838	35,955	31,556			5,623		33,975		25,233	132,343	317,199
Total 2012		6,285	64,190	70,474	52,651	3,007	53,052	2,709	60,906	62	50,514	65	111,420	41,082	27,298			5,883		38,527		21,300	134,089	315,984
Total 2011		6,206	64,827	71,033	54,180	2,320	54,935	1,339	62,779	64	49,993	65	112,773	41,090	26,773			5,519		39,170		22,984	135,536	319,342
Total 2010		6,230	73,062	79,292	53,799	3,587	54,995	1,715	64,309	66	49,788	66	114,097	37,844	32,486			2,742		42,042		27,066	142,180	335,569
Total 2009		6,354	75,210	81,565	57,760	4,730	52,243	3,992					118,725	31,939	24,020			13,703	4,206	9,278		40,627	151,398	351,688
Total 2008		5,750	85,144	90,894	72,125	7,324	47,111	660					127,219	63,903	15,523	38,414		31,292	0	27,658		176,791	394,904	
Total 2007		6,755	100,343	107,098	73,433	9,827	49,918	248					133,426	55,453	77,257	693		32,858	18,262	14,495		199,018	439,542	
Total 2006		7,711	95,717	103,428	72,436	10,551	49,718	969					133,674	59,890	76,187			33,239	27,451	4,437		201,205	438,308	
Total 2005		7,487	93,011	100,499	78,520	4,390	51,638	9					134,557	59,107	81,223			36,561	24,297	4,658		205,846	440,902	
Total 2004		7,723	92,043	99,766	77,887	8,398	53,125	3,118					142,527	32,492	114,374			20,547	14,329	34,370		216,112	458,405	
Total 2003		7,386	93,845	101,232	83,943	3,096	54,147	1,845					143,532	28,843	113,688			999		69,717		213,247	458,010	
Total 2002		7,353	95,537	102,891	86,806	4,066	55,145	554					142,910	31,135	112,409			8,237		65,413		217,195	462,996	
Total 2001		6,818	95,487	102,305	87,793	539	56,216	9					144,557					145,933		82,472		228,405	475,268	
Total 2000		6,323	95,560	101,883	77,300	869	67,309	368					145,845					136,695		91,722		228,417	476,145	
Total 1999 ¹³		6,989	97,378	104,367	46,595		101,123						147,718					139,396		85,952		225,348	477,433	
Total 1998		16,883	81,136	98,019	43,621	2,230	100,083						145,934					133,429		80,217		213,646	457,598	
Total 1997		15,750	81,396	97,146	47,290	16	100,632						147,938					129,617		79,053		208,670	453,754	
Total 1996 ¹²		13,777	70,091	83,868	47,784	962	95,543						144,289					123,521		71,448		194,969	423,127	
Total 1995 ⁸		13,279	71,208	84,487	48,626	572	100,926						150,124					121,121		75,581		196,702	431,313	
Total 1994		13,064	74,291	87,354	46,922	2,043	101,123						150,089					119,623		75,144		194,767	432,210	
Total 1993		8,665	76,853	85,518	47,269		96,859						144,127					126,676		73,915		200,591	430,236	
Total 1992		8,178	80,742	88,920	45,475		96,679						142,154					125,596		68,742		194,338	425,412	
Total 1991		7,947	68,576	76,523	44,228		96,494						140,722					147,868		74,389		222,257	439,502	
Total 1990 ³		7,253	73,939	81,192	44,249		96,278						140,528					157,664		78,461		236,125	457,845	
Total 1989 ^{4,5}		6,919	58,720	65,639	45,338		97,884						143,222					121,029		75,513		196,542	405,403	
Total 1988 ⁵		11,810	75,557	87,367	96,405		83,564						179,968					125,494		72,680		198,174	465,509	
Total 1987 ⁷		13,622	88,147	101,769	99,159		89,685						188,844					170,703		55,212		225,915	516,528	
Total 1986		25,278	105,442	130,720	100,190		90,396						190,586					151,189		50,947		202,136	523,442	

1 The two city owned recycling and disposal stations are NRDS in the north end of the city and SRDS in the South end.

2 Beginning Feb 2014 car trips are weighed. Prior to this, car weights were calculated based on composition study results.

Car weight estimate for 2009 - Jan 2014 based on 480.8 pounds per car

Car weight estimate for 2001/2008 based on 378.8 pounds per car.

Car weight estimate for 1999/2000 based on 333 pounds per car

Car weight estimate for 1998 based on 433 pounds per car.

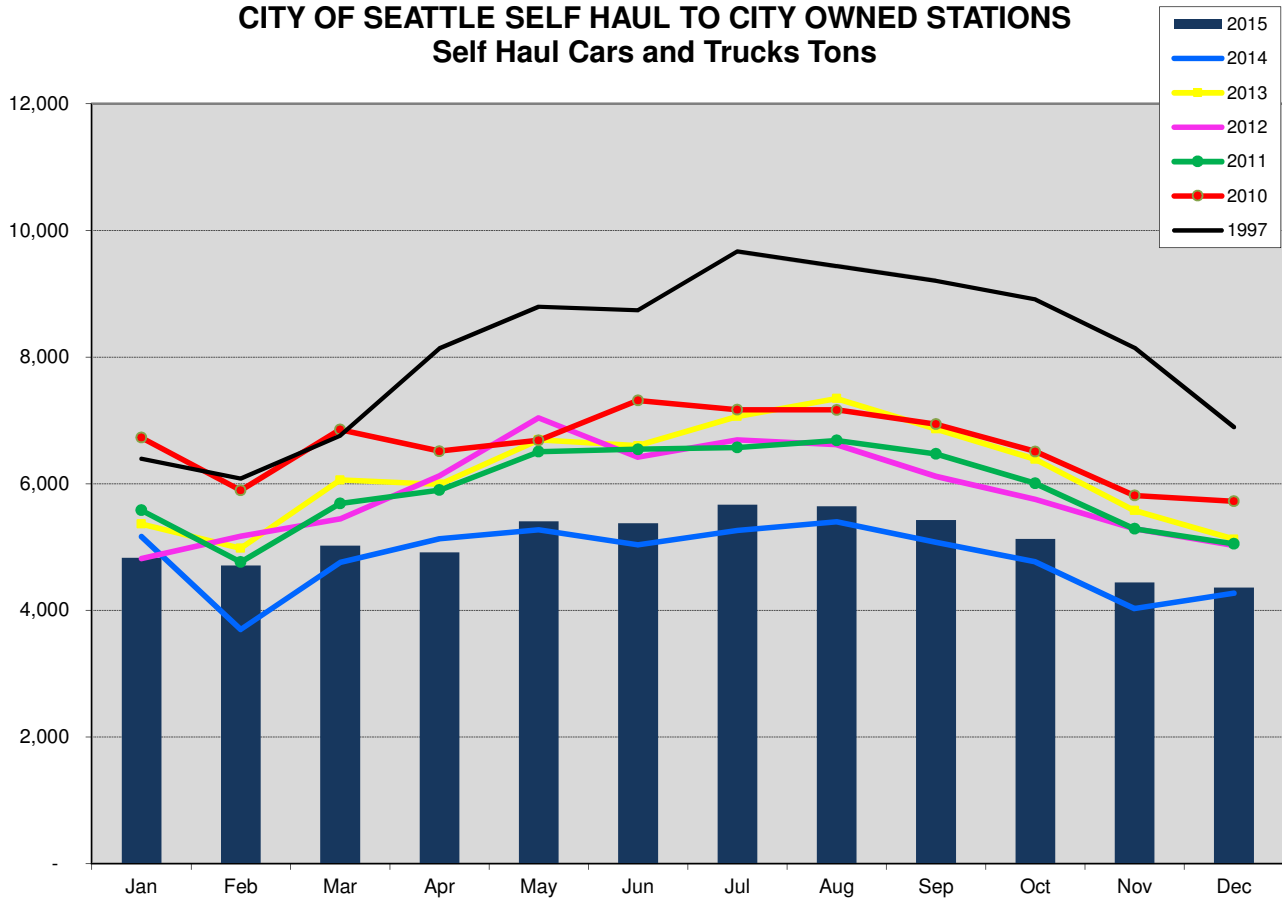
Car weight estimate for 1994/95 based on 290 pounds per car.

3 Wood Waste Program at city owned transfer stations began in Jan, 1990, ended as separate program 2009

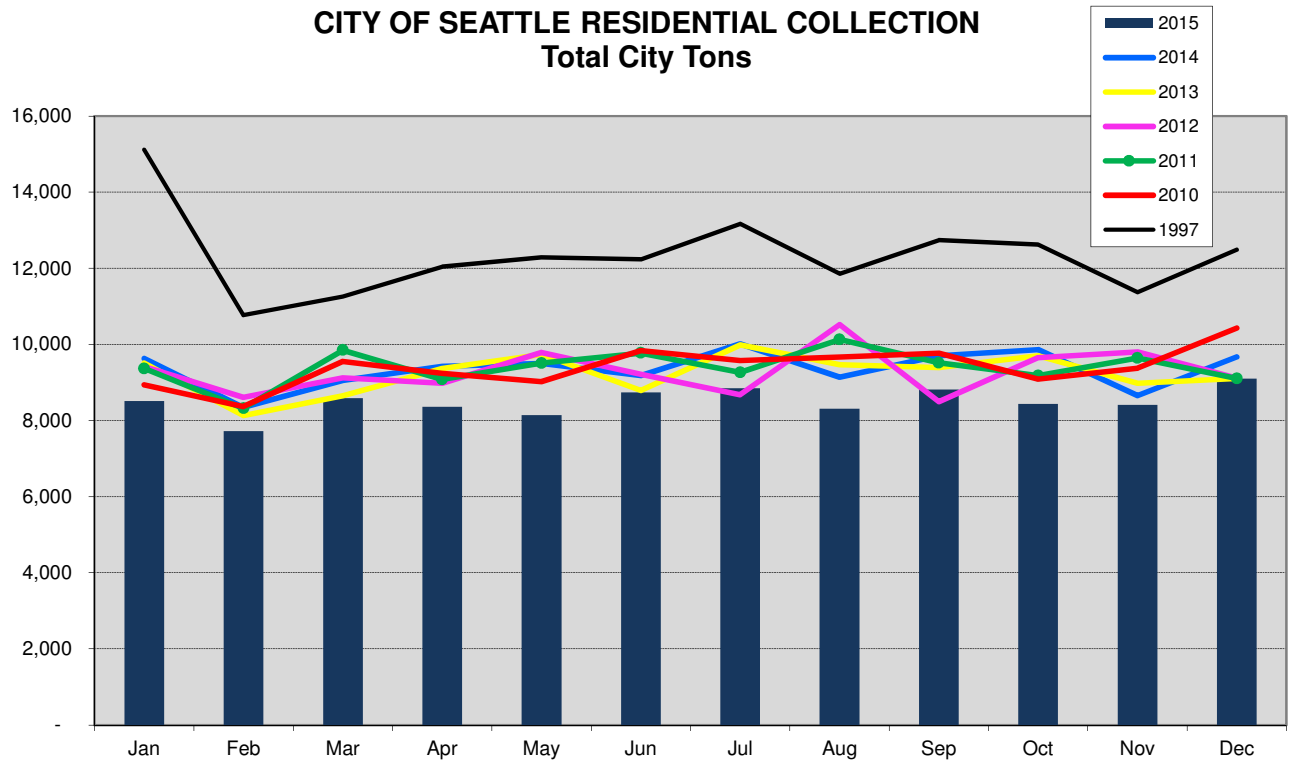
4 Apartment Recycling Program began in May, 1989

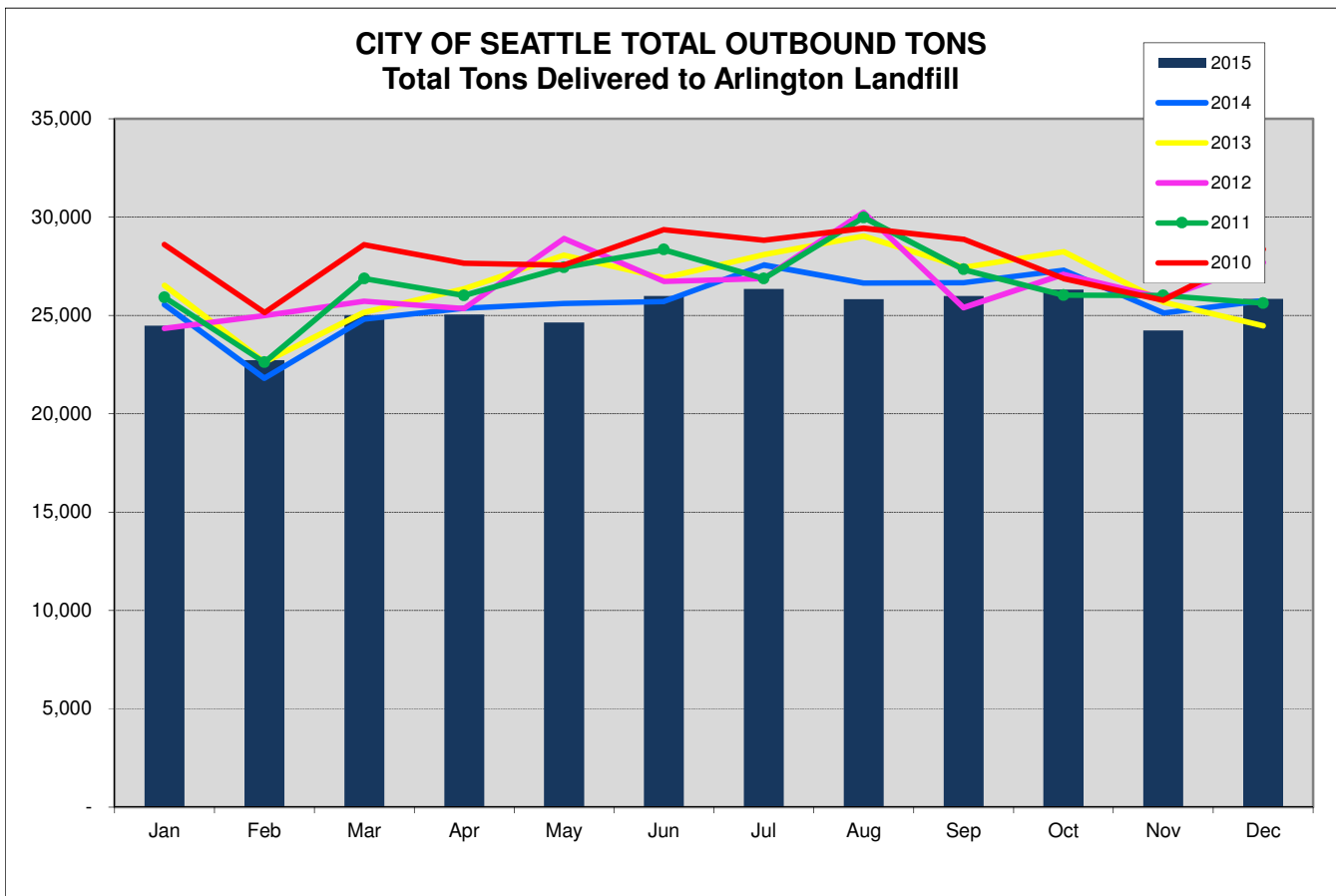
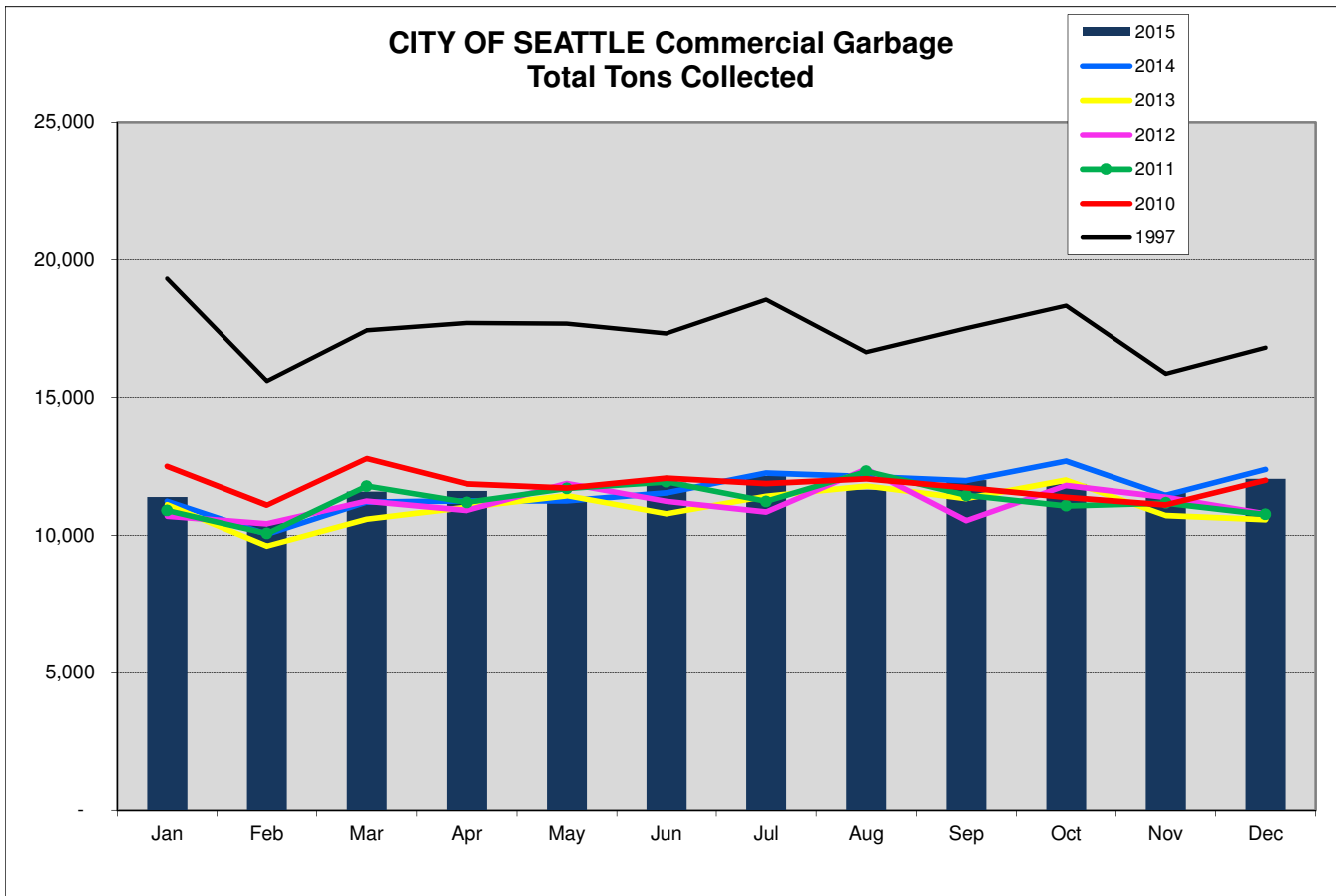
5 Curbside Yard Waste Collection began in January, 1989

CITY OF SEATTLE SELF HAUL TO CITY OWNED STATIONS Self Haul Cars and Trucks Tons

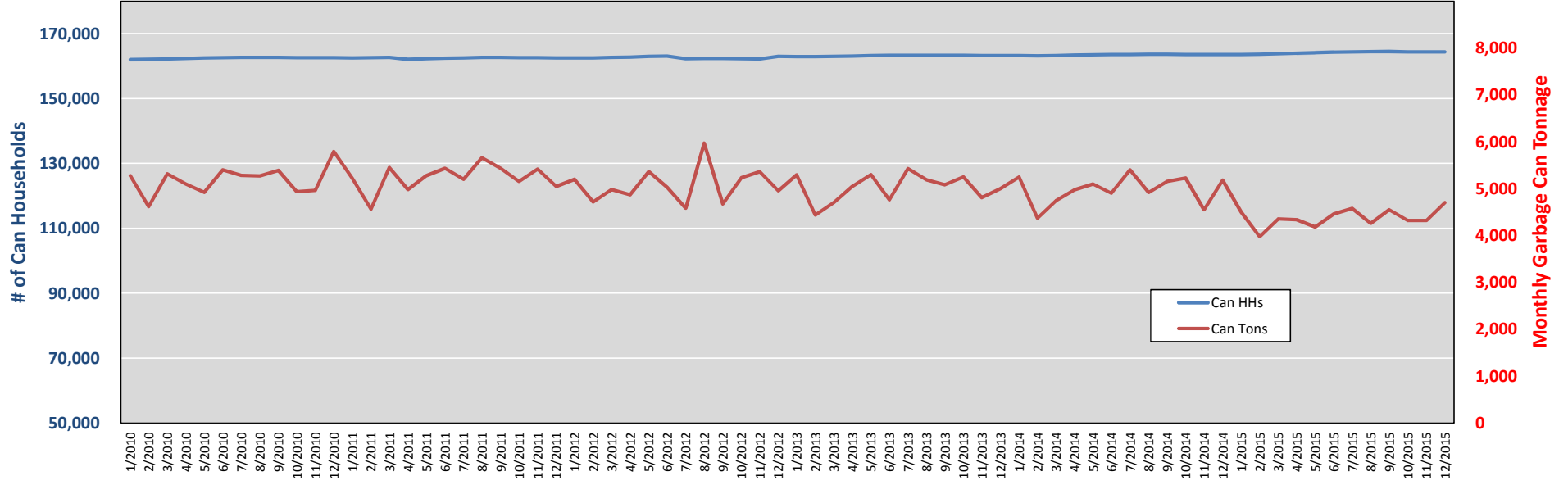


CITY OF SEATTLE RESIDENTIAL COLLECTION Total City Tons

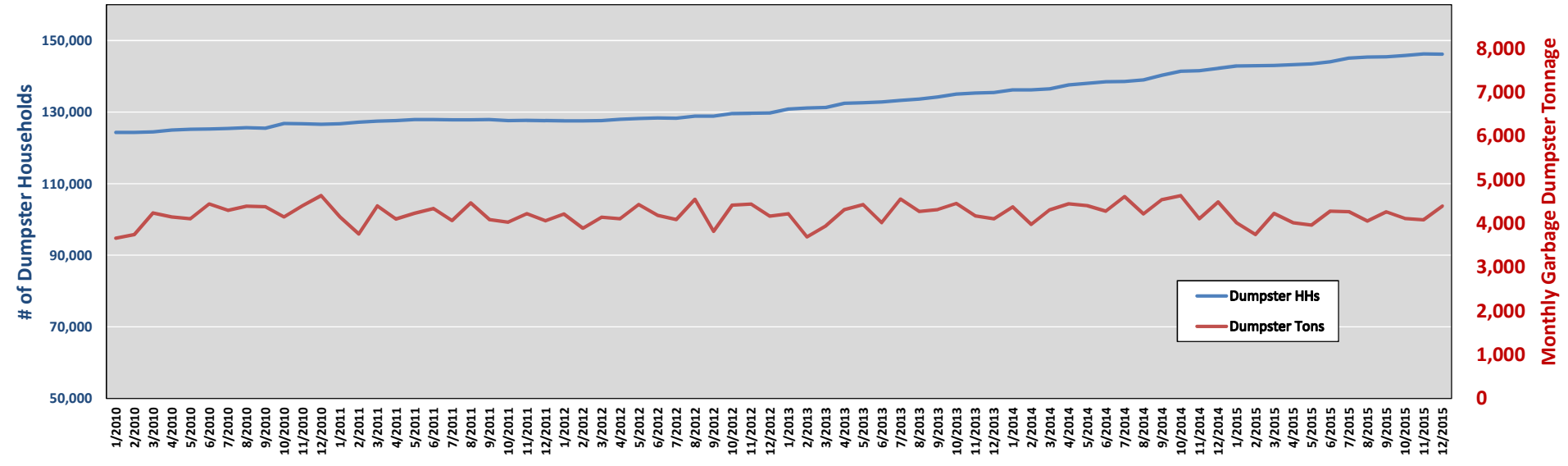




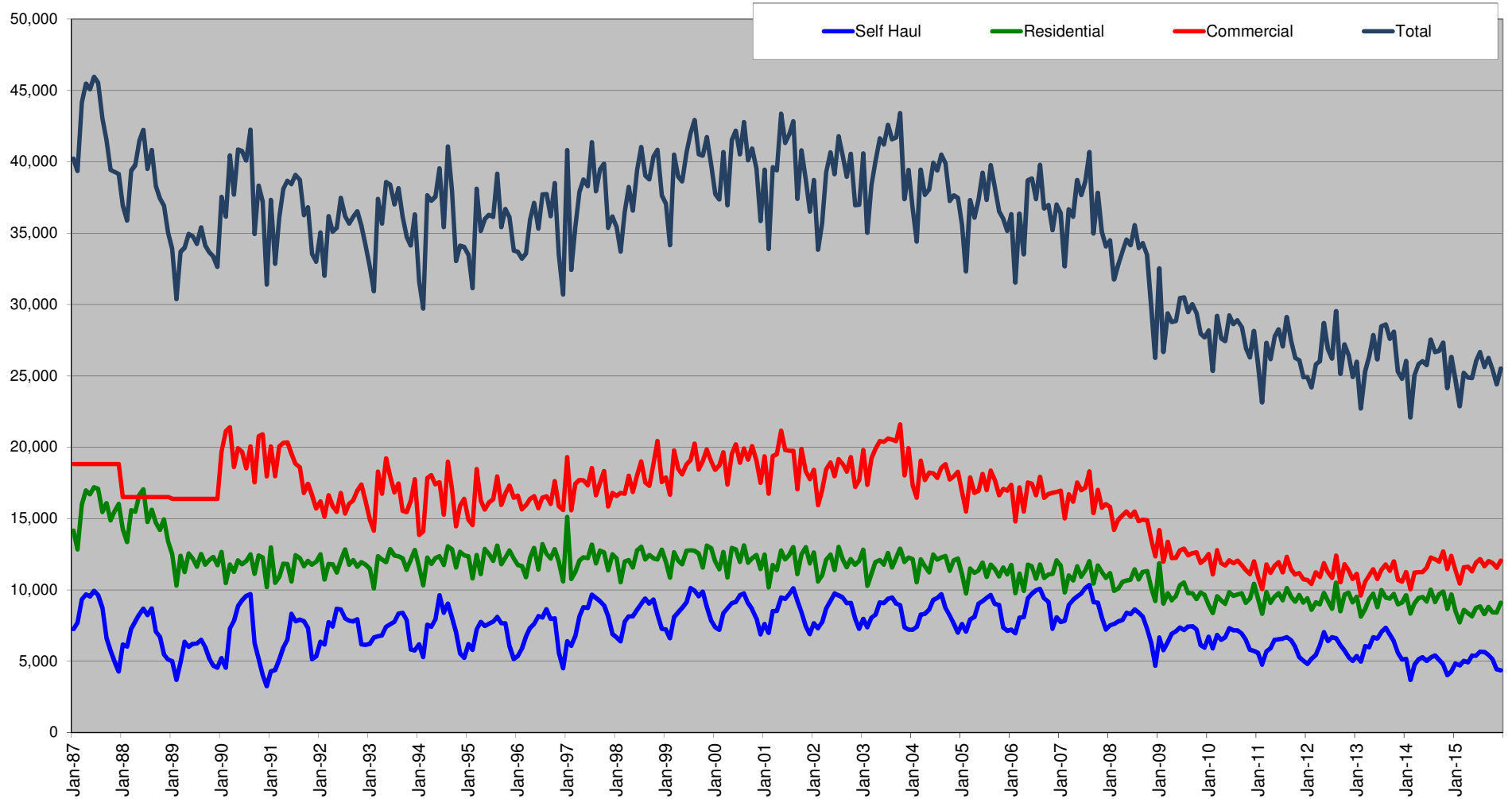
Growth in Can (Single-Family) Households and Monthly Garbage Tons



Growth in Dumpster (Multi-Family) Households and Monthly Garbage Tons



City of Seattle Garbage Disposal



Monthly commercial tonnage for 1987-1989 estimated from annual data.