

GARBAGE REPORT

4th Quarter 2013

Seattle Public Utilities, Economic Services Section

Report Date: January 30, 2014

Phone: (206) 684-4143

Total City Tonnage Breakdown

Self Haul

| | | |
|--|-------------|---------------------------------------|
| Q4 Self Haul Cars ¹ | 1,393 Tons | 3.2% decrease vs. same period in 2012 |
| 2013 Cumulative Self Haul Cars: | 6,569 Tons | 4.5% increase vs. same period in 2012 |
| Q4 Self Haul Trucks ² : | 15,685 Tons | 7.3% increase vs. same period in 2012 |
| 2013 Cumulative Self Haul Trucks: | 67,450 Tons | 5.1% increase vs. same period in 2012 |
| 2013 Cumulative Self Haul Cars & Trucks: | 74,019 Tons | 5.0% increase vs. same period in 2012 |

Residential

| | | |
|------------------------------------|--------------|---------------------------------------|
| Q4 Single Family: | 15,053 Tons | 3.2% decrease vs. same period in 2012 |
| 2013 Cumulative Single Family: | 60,291 Tons | 1.0% decrease vs. same period in 2012 |
| Q4 Multi Family: | 12,742 Tons | 2.3% decrease vs. same period in 2012 |
| 2013 Cumulative Multi Family: | 50,546 Tons | 0.1% increase vs. same period in 2012 |
| Q4 Total Residential: | 27,795 Tons | 2.8% decrease vs. same period in 2012 |
| 2013 Cumulative Total Residential: | 110,838 Tons | 0.5% decrease vs. same period in 2012 |

Commercial

| | | |
|-----------------------------|--------------|---------------------------------------|
| Q4 Commercial: | 33,283 Tons | 2.0% decrease vs. same period in 2012 |
| 2013 Cumulative Commercial: | 132,401 Tons | 1.3% decrease vs. same period in 2012 |

Total Tons Collected

| | | |
|----------------------------------|--------------|---------------------------------------|
| Q4 Total Collected: | 78,156 Tons | 0.6% decrease vs. same period in 2012 |
| 2013 Cumulative Total Collected: | 317,258 Tons | 0.4% decrease vs. same period in 2012 |

Total Tons Delivered To Arlington³

| | | |
|----------------------------------|--------------|--|
| Q4 Total Delivered: | 78,389 Tons | 2.8 % decrease vs. same period in 2012 |
| 2013 Cumulative Total Delivered: | 318,600 Tons | 0.2 % decrease vs. same period in 2012 |

Selected Statistics

Average Monthly Pounds Garbage Collected per Household YTD

| | | | |
|--|-----------|---------------|--------------------------------------|
| Garbage Can Customers: (Single Family) | 62 lbs/hh | (163,413 hhs) | 1.4% decrease vs same period in 2012 |
| Garbage Dumpster Customers (Multi Family) | 64 lbs/hh | (135,499 hhs) | 2.6% decrease vs same period in 2012 |

Recycling & Disposal Station Self Haul Garbage Rates⁴:

Cars: \$30.00 per trip Trucks: \$145.00 per ton (\$30.00 minimum)

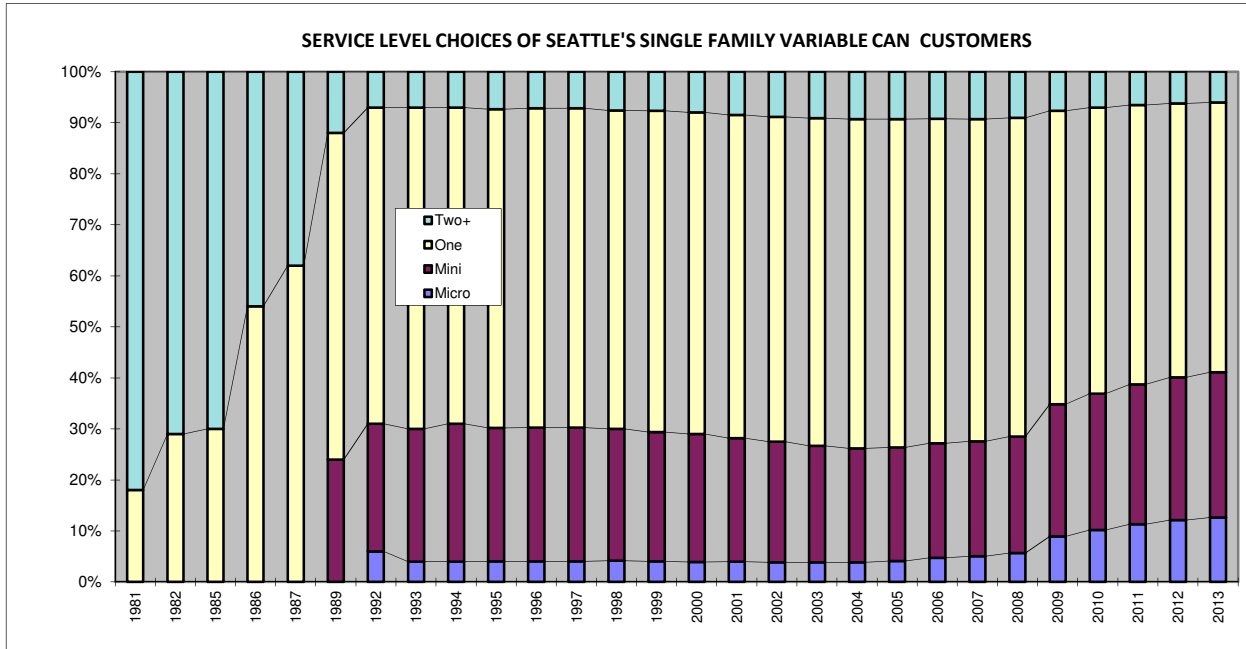
¹ Car tons calculated based on 480.8 pounds per car for 2009 to present according to study done from Jan-Dec 2008

² An estimated 66% of the self-haul truck tons are commercial according to a waste stream sampling study conducted in 2008.

³ Total tons collected not equal to total tons delivered due to operational factors.

⁴ Vans & pickup trucks pay the per ton truck rate.

Variable Can Customer Service Levels¹



| | Micro | Mini | One | Two+ |
|-------------|---------------|---------------|---------------|--------------|
| 1981 | | | 18.00% | 82.00% |
| 1982 | | | 29.00% | 71.00% |
| 1985 | | | 30.00% | 70.00% |
| 1986 | | | 54.00% | 46.00% |
| 1987 | | | 62.00% | 38.00% |
| 1989 | | 24.00% | 64.00% | 12.00% |
| 1992 | 6.00% | 25.00% | 62.00% | 7.00% |
| 1993 | 4.00% | 26.00% | 63.00% | 7.00% |
| 1994 | 4.00% | 27.00% | 62.00% | 7.00% |
| 1995 | 4.06% | 26.15% | 62.44% | 7.35% |
| 1996 | 4.04% | 26.23% | 62.59% | 7.14% |
| 1997 | 4.04% | 26.23% | 62.59% | 7.14% |
| 1998 | 4.16% | 25.88% | 62.35% | 7.61% |
| 1999 | 4.06% | 25.60% | 63.62% | 7.72% |
| 2000 | 3.93% | 25.08% | 63.02% | 7.97% |
| 2001 | 3.96% | 24.24% | 63.32% | 8.49% |
| 2002 | 3.85% | 23.62% | 63.72% | 8.82% |
| 2003 | 3.84% | 22.85% | 64.23% | 9.08% |
| 2004 | 3.86% | 22.31% | 64.54% | 9.30% |
| 2005 | 4.13% | 22.22% | 64.37% | 9.28% |
| 2006 | 4.72% | 22.49% | 63.57% | 9.21% |
| 2007 | 5.05% | 22.50% | 63.17% | 9.28% |
| 2008 | 5.66% | 22.85% | 62.45% | 9.04% |
| 2009 | 8.93% | 25.89% | 57.51% | 7.67% |
| 2010 | 10.21% | 26.69% | 56.08% | 7.02% |
| 2011 | 11.31% | 27.45% | 54.72% | 6.53% |
| 2012 | 12.13% | 27.98% | 53.68% | 6.21% |
| 2013 | 12.62% | 28.49% | 52.85% | 6.04% |

Monthly Variable Can Rates:

| | |
|-------------------|---------|
| Micro (12 gal) | \$18.65 |
| Mini (19 gal) | \$22.90 |
| One Can (32 gal) | \$29.80 |
| Two Cans (64 gal) | \$59.65 |
| Each Add'l Can | \$29.80 |

Residential Dumpster Service²

Most Common Monthly Rate
\$188.57

¹ Based on single-family customers only

² This is the rate for a one cubic yard un-compacted container picked up once per week, which is the most common dumpster service level. Residential dumpster service rates vary based on the number and size of containers and the number of pickups per week.

CITY OF SEATTLE GARBAGE TONNAGE REPORT

| | | SELF HAUL | | | RESIDENTIAL | | | | | | | | COMMERCIAL GARBAGE | | | | | | | GRAND | | | |
|---------------------------|-------|-------------------|---------|-----------|------------------|-----------------------------------|---------------|----------|---------------|---------------|--------------|---------------|--------------------|---------------|----------|---------------|--------|----------|---------------|--------|----------|------------|---------|
| | | Self Haul | | Total | CS ¹⁹ | | WM | | TOTALS | | | | CS | | Rabanco | | WM | | | TOTAL | TOTAL | | |
| Year | Month | Cars ² | Trucks | SELF HAUL | City Stations | Eastmont/ Lander ²⁰ | City Stations | Eastmont | Single Family | Avg SF Lbs/HH | Multi Family | Avg MF Lbs/HH | Total Residential | City Stations | Eastmont | City Stations | Lander | Eastmont | City Stations | Lander | Eastmont | COMMERCIAL | GARBAGE |
| 2012 | 1 | 417 | 4,399 | 4,816 | 4,374 | 337 | 4,492 | 216 | 5,196 | 64 | 4,223 | 66 | 9,419 | 3,352 | 2,064 | | 473 | | 3,182 | 1,624 | | 10,695 | 24,930 |
| 2012 | 2 | 466 | 4,702 | 5,168 | 4,157 | 138 | 4,260 | 57 | 4,713 | 58 | 3,899 | 61 | 8,612 | 3,158 | 2,103 | | 476 | | 2,948 | 1,732 | | 10,417 | 24,197 |
| 2012 | 3 | 444 | 4,997 | 5,441 | 4,361 | 182 | 4,514 | 65 | 4,975 | 61 | 4,147 | 65 | 9,121 | 3,269 | 2,466 | | 481 | | 3,260 | 1,762 | | 11,238 | 25,800 |
| 2012 | 4 | 543 | 5,579 | 6,122 | 4,294 | 183 | 4,379 | 125 | 4,870 | 60 | 4,111 | 64 | 8,981 | 3,272 | 2,184 | | 455 | | 3,192 | 1,799 | | 10,902 | 26,005 |
| 2012 | 5 | 536 | 6,502 | 7,038 | 4,615 | 283 | 4,797 | 97 | 5,359 | 66 | 4,434 | 69 | 9,793 | 3,590 | 2,387 | | 510 | | 3,449 | 1,941 | | 11,876 | 28,707 |
| 2012 | 6 | 595 | 5,822 | 6,417 | 4,388 | 225 | 4,438 | 165 | 5,026 | 62 | 4,189 | 65 | 9,216 | 3,513 | 2,241 | | 476 | | 3,206 | 1,795 | | 11,230 | 26,863 |
| 2012 | 7 | 635 | 6,054 | 6,689 | 4,440 | 226 | 3,664 | 348 | 4,584 | 56 | 4,094 | 64 | 8,678 | 3,531 | 2,264 | | 444 | | 3,087 | 1,519 | | 10,845 | 26,212 |
| 2012 | 8 | 553 | 6,061 | 6,613 | 4,598 | 298 | 5,057 | 568 | 5,967 | 73 | 4,553 | 71 | 10,521 | 3,580 | 2,466 | | 574 | | 3,661 | 2,126 | | 12,406 | 29,541 |
| 2012 | 9 | 656 | 5,456 | 6,113 | 4,077 | 207 | 3,907 | 305 | 4,672 | 58 | 3,824 | 59 | 8,496 | 3,190 | 2,288 | | 445 | | 2,925 | 1,679 | | 10,528 | 25,136 |
| 2012 | 10 | 524 | 5,225 | 5,750 | 4,546 | 294 | 4,580 | 235 | 5,234 | 64 | 4,421 | 68 | 9,655 | 3,698 | 2,296 | | 511 | | 3,366 | 1,933 | | 11,803 | 27,208 |
| 2012 | 11 | 451 | 4,836 | 5,286 | 4,533 | 357 | 4,577 | 342 | 5,360 | 66 | 4,449 | 69 | 9,809 | 3,533 | 2,268 | | 522 | | 3,281 | 1,774 | | 11,378 | 26,473 |
| 2012 | 12 | 464 | 4,556 | 5,021 | 4,267 | 278 | 4,389 | 187 | 4,950 | 61 | 4,170 | 64 | 9,121 | 3,397 | 2,271 | | 517 | | 2,971 | 1,615 | | 10,771 | 24,913 |
| 2013 | 1 | 498 | 4,864 | 5,362 | 4,471 | 272 | 4,653 | 118 | 5,292 | 65 | 4,223 | 65 | 9,515 | 3,384 | 2,250 | | 525 | | 3,178 | 1,775 | | 11,113 | 25,989 |
| 2013 | 2 | 432 | 4,550 | 4,981 | 3,885 | 190 | 3,995 | 62 | 4,438 | 54 | 3,694 | 56 | 8,132 | 3,027 | 1,885 | | 409 | | 2,728 | 1,554 | | 9,604 | 22,717 |
| 2013 | 3 | 511 | 5,546 | 6,057 | 4,118 | 224 | 4,166 | 149 | 4,708 | 58 | 3,948 | 60 | 8,657 | 3,005 | 2,374 | | 433 | | 2,880 | 1,882 | | 10,574 | 25,287 |
| 2013 | 4 | 488 | 5,501 | 5,989 | 4,478 | 213 | 4,376 | 298 | 5,045 | 62 | 4,321 | 65 | 9,365 | 2,997 | 2,533 | | 471 | | 2,780 | 2,199 | | 10,980 | 26,335 |
| 2013 | 5 | 582 | 6,109 | 6,691 | 4,670 | 206 | 4,432 | 427 | 5,299 | 65 | 4,437 | 67 | 9,735 | 3,054 | 2,819 | | 504 | | 2,822 | 2,295 | | 11,494 | 27,921 |
| 2013 | 6 | 661 | 5,936 | 6,597 | 4,164 | 286 | 3,937 | 398 | 4,764 | 58 | 4,022 | 61 | 8,786 | 2,887 | 2,829 | | 430 | | 2,438 | 2,195 | | 10,779 | 26,162 |
| 2013 | 7 | 656 | 6,403 | 7,058 | 4,563 | 446 | 4,421 | 559 | 5,426 | 66 | 4,562 | 68 | 9,988 | 3,224 | 2,676 | | 492 | | 2,977 | 2,077 | | 11,446 | 28,493 |
| 2013 | 8 | 713 | 6,629 | 7,342 | 4,224 | 528 | 3,639 | 1,077 | 5,187 | 63 | 4,281 | 64 | 9,468 | 2,928 | 3,044 | | 466 | | 2,949 | 2,398 | | 11,786 | 28,595 |
| 2013 | 9 | 637 | 6,226 | 6,864 | 4,382 | 344 | 4,134 | 536 | 5,079 | 62 | 4,318 | 64 | 9,397 | 2,870 | 2,872 | | 464 | | 2,795 | 2,340 | | 11,341 | 27,602 |
| 2013 | 10 | 495 | 5,888 | 6,382 | 4,592 | 301 | 4,644 | 169 | 5,251 | 64 | 4,455 | 66 | 9,706 | 2,973 | 3,068 | | 497 | | 2,988 | 2,552 | | 12,079 | 28,167 |
| 2013 | 11 | 470 | 5,104 | 5,573 | 4,185 | 379 | 4,247 | 169 | 4,804 | 59 | 4,177 | 62 | 8,981 | 2,821 | 2,594 | | 440 | | 2,786 | 2,000 | | 10,641 | 25,195 |
| 2013 | 12 | 428 | 4,694 | 5,122 | 4,318 | 276 | 4,245 | 270 | 4,998 | 61 | 4,110 | 61 | 9,109 | 2,793 | 2,671 | | 491 | | 2,644 | 1,964 | | 10,564 | 24,794 |
| Total 2013 | | 6,569 | 67,450 | 74,019 | 52,050 | 3,667 | 50,889 | 4,233 | 60,291 | 62 | 50,547 | 63 | 110,838 | 35,963 | 31,616 | | 5,623 | | 33,965 | 25,233 | | 132,401 | 317,258 |
| Total 2012 ²¹ | | 6,285 | 64,190 | 70,474 | 52,651 | 3,007 | 53,052 | 2,709 | 60,906 | 62 | 50,514 | 65 | 111,420 | 41,082 | 27,298 | | 5,883 | | 38,527 | 21,300 | | 134,089 | 315,984 |
| Total 2011 | | 6,206 | 64,827 | 71,033 | 54,180 | 2,320 | 54,935 | 1,339 | 62,779 | 64 | 49,993 | 65 | 112,773 | 41,090 | 26,773 | | 5,519 | | 39,170 | 22,984 | | 135,536 | 319,342 |
| Total 2010 | | 6,230 | 73,062 | 79,292 | 53,799 | 3,587 | 54,995 | 1,715 | 64,309 | 66 | 49,788 | 66 | 114,097 | 37,844 | 32,486 | | 2,742 | | 42,042 | 27,066 | | 142,180 | 335,569 |
| Total 2009 | | 6,354 | 75,210 | 81,565 | 57,760 | 4,730 | 52,243 | 3,992 | 61,235 | 66 | 49,788 | 66 | 118,725 | 31,939 | 24,020 | 13,703 | 4,206 | 9,278 | 40,627 | 51 | 27,574 | 151,398 | 351,688 |
| Total 2008 | | 5,750 | 85,144 | 90,894 | 72,125 | 7,324 | 47,111 | 660 | 54,435 | 66 | 49,788 | 66 | 127,219 | 63,903 | 15,523 | 38,414 | 31,292 | 0 | 27,658 | | 0 | 176,791 | 394,904 |
| Total 2007 | | 6,755 | 100,343 | 107,098 | 73,433 | 9,827 | 49,918 | 248 | 54,746 | 66 | 49,788 | 66 | 133,426 | 55,453 | 77,257 | 693 | 32,858 | 18,262 | 14,495 | | | 199,018 | 439,542 |
| Total 2006 | | 7,711 | 95,717 | 103,428 | 72,436 | 10,551 | 49,718 | 969 | 54,669 | 66 | 49,788 | 66 | 133,674 | 59,890 | 76,187 | | 33,239 | 27,451 | 4,437 | | | 201,205 | 438,308 |
| Total 2005 | | 7,487 | 93,011 | 100,499 | 78,520 | 4,390 | 51,638 | 9 | 56,038 | 66 | 49,788 | 66 | 134,557 | 59,107 | 81,223 | | 36,561 | 24,297 | 4,658 | | | 205,846 | 440,902 |
| Total 2004 | | 7,723 | 92,043 | 99,766 | 77,887 | 8,398 | 53,125 | 3,118 | 56,243 | 66 | 49,788 | 66 | 142,527 | 32,492 | 114,374 | | 20,547 | 14,329 | 34,370 | | | 216,112 | 458,405 |
| Total 2003 | | 7,386 | 93,845 | 101,232 | 83,943 | 3,596 | 54,147 | 1,845 | 55,993 | 66 | 49,788 | 66 | 143,532 | 28,843 | 113,688 | | 999 | | 69,717 | | | 213,247 | 458,010 |
| Total 2002 | | 7,353 | 95,537 | 102,891 | 86,806 | 406 | 55,145 | 554 | 55,651 | 66 | 49,788 | 66 | 142,910 | 31,135 | 112,409 | | 8,237 | | 65,413 | | | 217,195 | 462,996 |
| Total 2001 | | 6,818 | 95,487 | 102,305 | 87,793 | 539 | 56,216 | 9 | 56,755 | 66 | 49,788 | 66 | 144,557 | | 145,933 | | | | 82,472 | | | 228,405 | 475,268 |
| Total 2000 | | 6,323 | 95,560 | 101,883 | 77,300 | 869 | 67,309 | 368 | 67,677 | 66 | 49,788 | 66 | 145,845 | | 136,695 | | | | 91,722 | | | 228,417 | 476,145 |
| Total 1999 ³ | | 6,989 | 97,378 | 104,367 | 46,595 | | 101,123 | | 101,123 | 66 | 49,788 | 66 | 147,718 | | 139,396 | | | | 85,952 | | | 225,348 | 477,433 |
| Total 1998 | | 16,883 | 81,136 | 98,019 | 43,621 | 2,230 | 100,083 | | 100,083 | 66 | 49,788 | 66 | 145,934 | | 133,429 | | | | 80,217 | | | 213,646 | 457,598 |
| Total 1997 | | 15,750 | 81,396 | 97,146 | 47,290 | 16 | 100,632 | | 100,632 | 66 | 49,788 | 66 | 147,938 | | 129,617 | | | | 79,053 | | | 208,670 | 453,574 |
| Total 1996 ² | | 13,777 | 70,091 | 83,868 | 47,784 | 962 | 95,543 | | 95,543 | 66 | 49,788 | 66 | 144,289 | | 123,521 | | | | 71,448 | | | 194,969 | 423,127 |
| Total 1995 ⁸ | | 13,279 | 71,208 | 84,487 | 48,626 | 572 | 100,926 | | 100,926 | 66 | 49,788 | 66 | 150,124 | | 121,121 | | | | 75,581 | | | 196,702 | 431,313 |
| Total 1994 | | 13,064 | 74,291 | 87,354 | 46,922 | 2,043 | 101,123 | | 101,123 | 66 | 49,788 | 66 | 150,089 | | 119,623 | | | | 75,144 | | | 194,767 | 432,210 |
| Total 1993 | | 8,665 | 76,853 | 85,518 | 47,269 | | 96,859 | | 96,859 | 66 | 49,788 | 66 | 144,127 | | 126,676 | | | | 73,915 | | | 200,591 | 430,236 |
| Total 1992 | | 8,178 | 80,742 | 88,920 | 45,475 | | 96,679 | | 96,679 | 66 | 49,788 | 66 | 142,154 | | 125,596 | | | | 68,742 | | | 194,338 | 425,412 |
| Total 1991 | | 7,947 | 68,576 | 76,523 | 44,228 | | 96,494 | | 96,494 | 66 | 49,788 | 66 | 140,722 | | 147,868 | | | | 74,389 | | | 222,257 | 439,502 |
| Total 1990 ³ | | 7,253 | 73,939 | 81,192 | 44,249 | | 96,278 | | 96,278 | 66 | 49,788 | 66 | 140,528 | | 157,664 | | | | 157,664 | | | 236,125 | 457,845 |
| Total 1989 ^{4,5} | | 6,919 | 58,720 | 65,639 | 45,338 | | 97,884 | | 97,884 | 66 | 49,788 | 66 | 143,222 | | 121,029 | | | | 75,513 | | | 196,542 | 405,403 |
| Total 1988 ⁶ | | 11,810 | 75,557 | 87,367 | 96,405 | | 83,564 | | 83,564 | 66 | 49,788 | 66 | 179,968 | | 125,494 | | | | 72,680 | | | 198,174 | 465,509 |
| Total 1987 ⁷ | | 13,622 | 88,147 | 101,769 | 99,159 | | 89,685 | | 89,685 | 66 | 49,788 | 66 | 188,844 | | 170,703 | | | | 55,212 | | | 225,915 | 516,528 |
| Total 1986 | | 25,278 | 105,442 | 130,720 | 100,190 | | 90,396 | | 90,396 | 66 | 49,788 | 66 | 190,586 | | 151,189 | | | | 50,947 | | | 202,136 | 523,442 |

1 The two city owned recycling and disposal stations are NRDS in the north end of the city and SRDS in the South end.

2 Car weight estimate of 480.8 pounds per car based on study done from Jan - Dec 2008

Car weight estimate for 2001/2008 based on 378.8 pounds per car.

Car weight estimate for 1999/2000 based on 333 pounds per car

Car weight estimate for 1998 based on 433 pounds per car.

Car weight estimate for 1994/95 based on 290 pounds per car.

3 Wood Waste Program at city owned transfer stations began in Jan, 1990, ended as separate program 2009

4 Apartment Recycling Program began in May, 1989

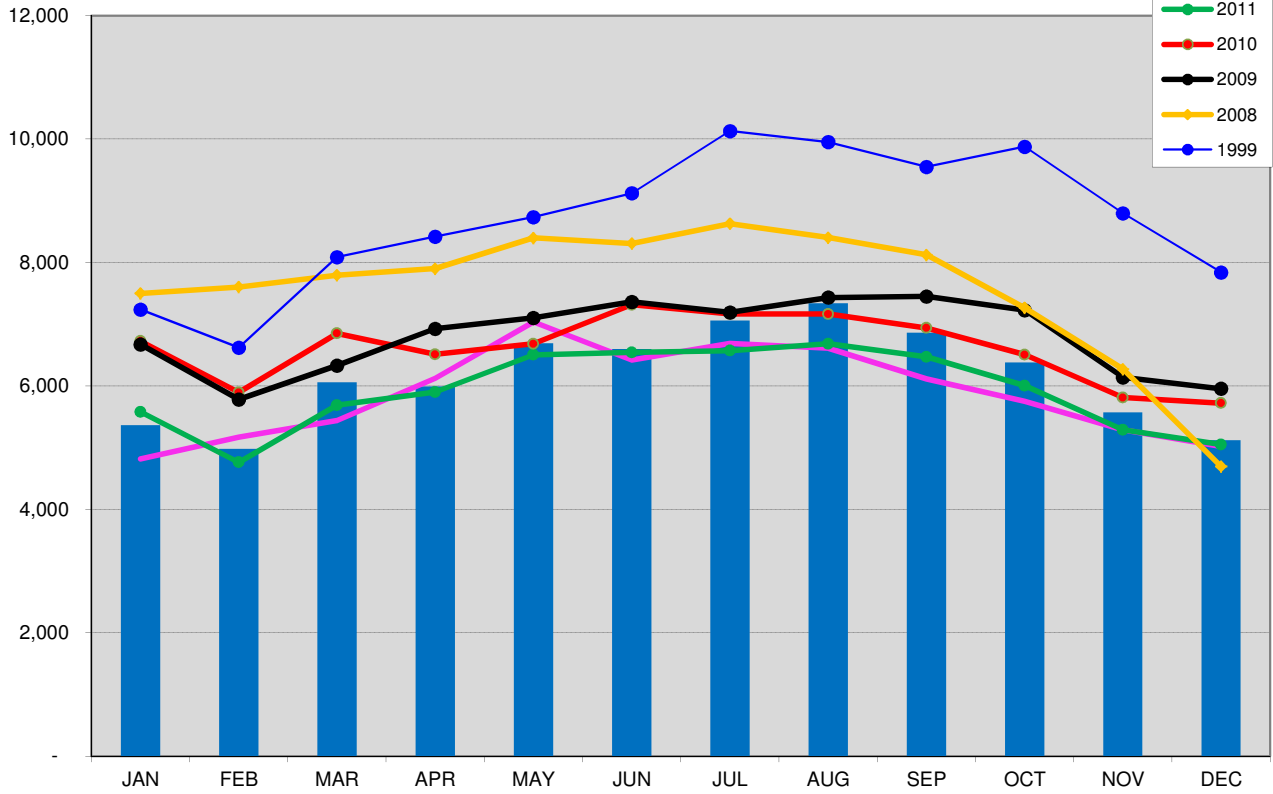
5 Curbside Yard Waste Collection began in January, 1989

6 Curbside Recycling Program began in February, 1988

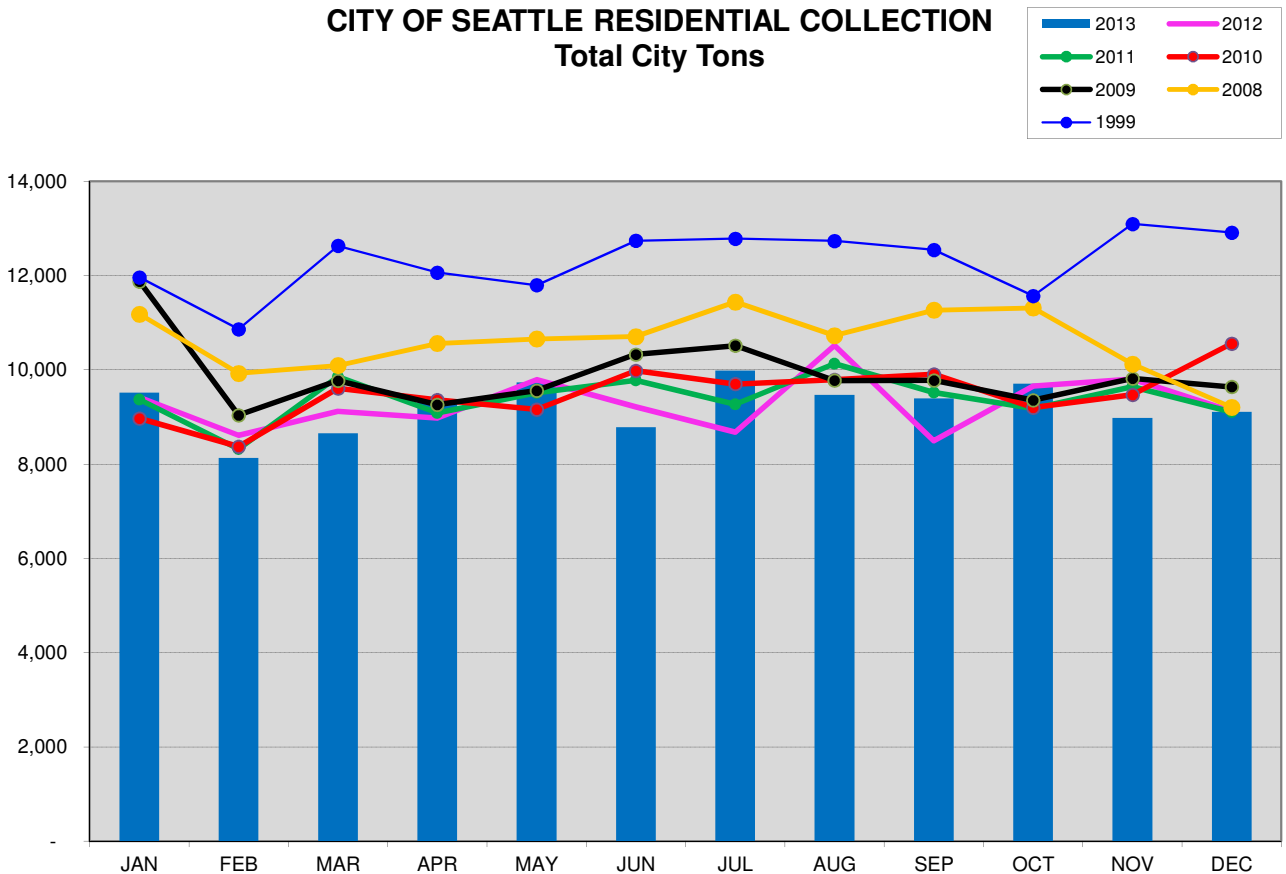
7 Yard Waste "Clean Green" Program began in August, 1987

8 In 1995 3,220 tons of yard waste residuals were returned to SRDS and not weighed in. Added to self haul truck tons.

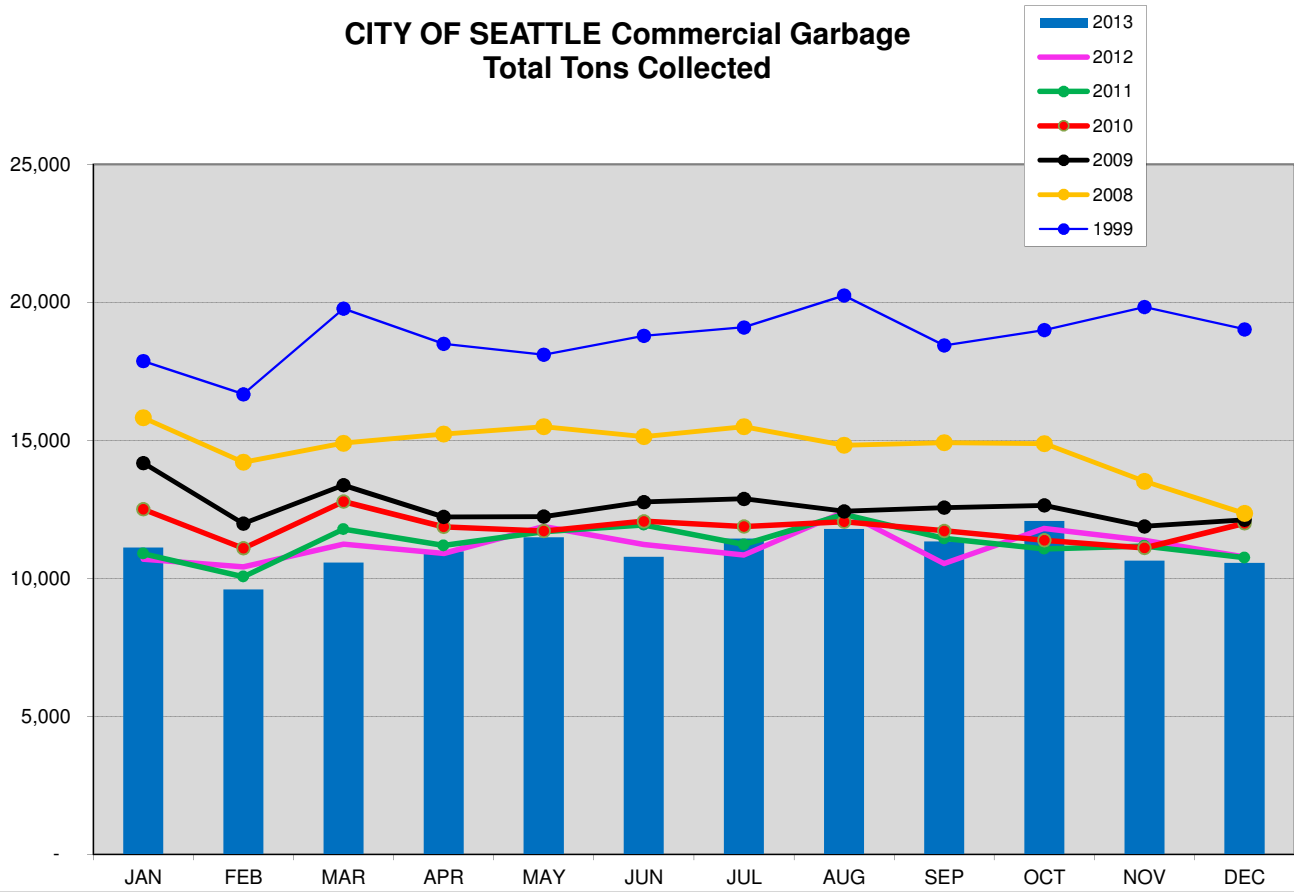
CITY OF SEATTLE SELF HAUL TO CITY OWNED STATIONS Self Haul Cars and Trucks



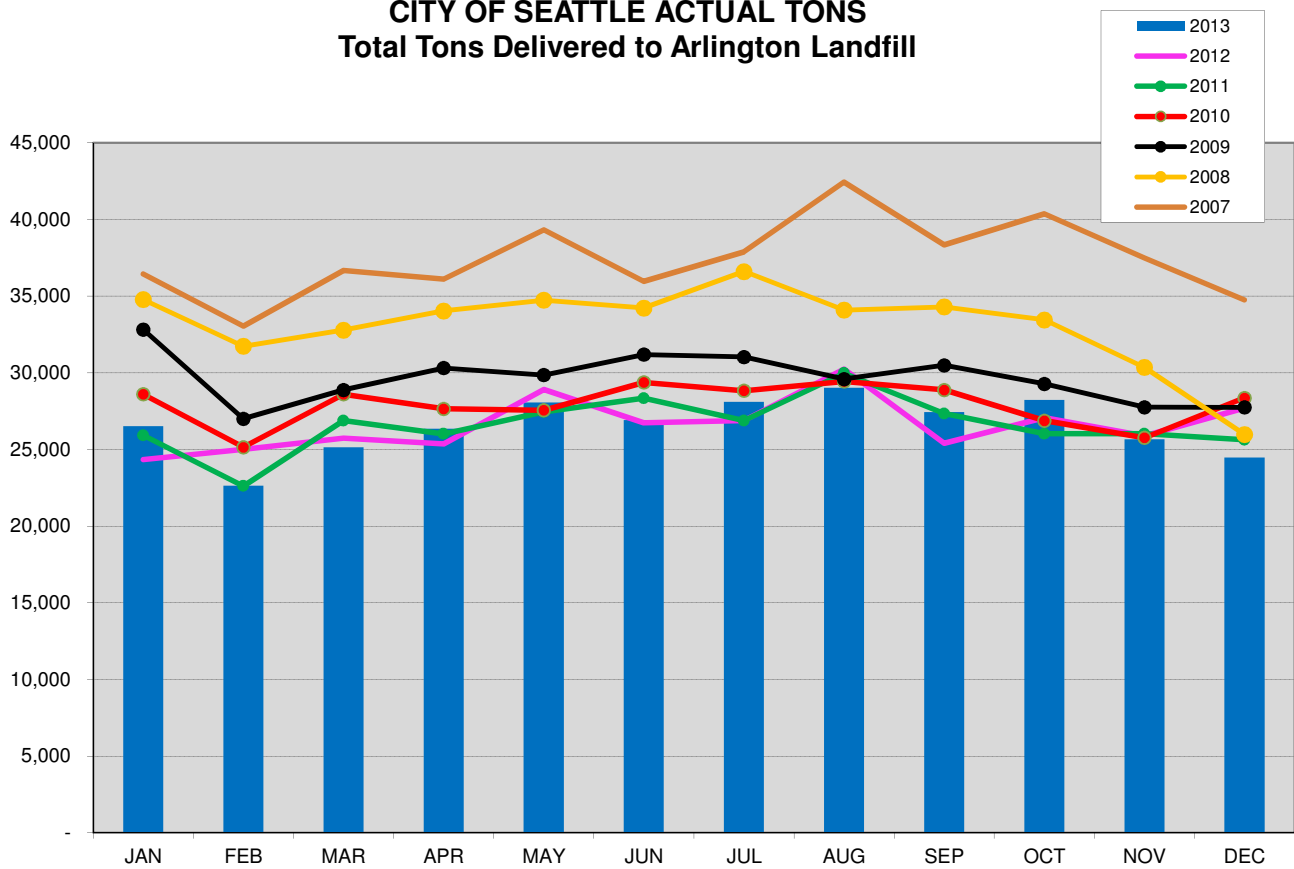
CITY OF SEATTLE RESIDENTIAL COLLECTION Total City Tons



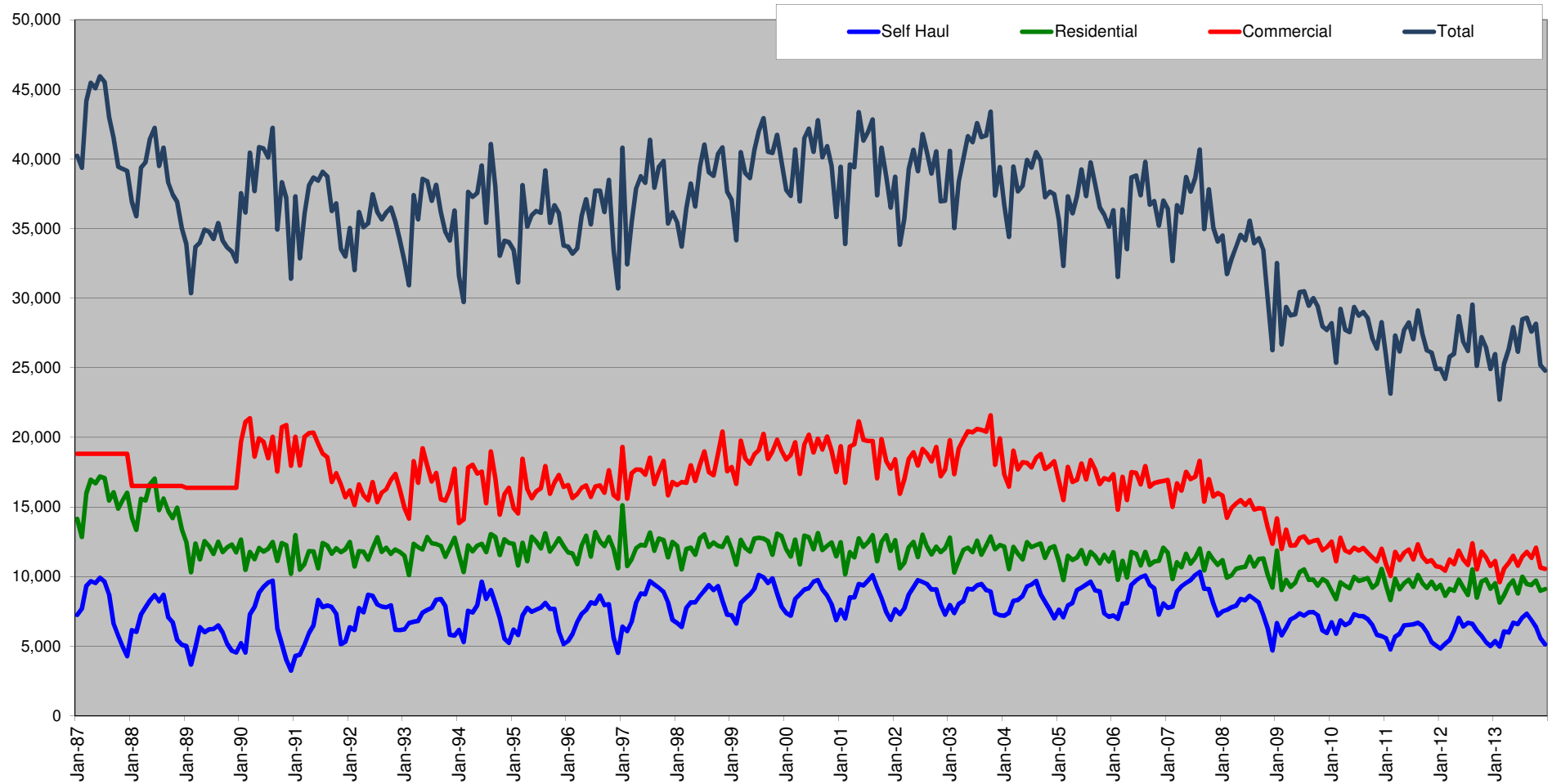
CITY OF SEATTLE Commercial Garbage Total Tons Collected



CITY OF SEATTLE ACTUAL TONS Total Tons Delivered to Arlington Landfill



City of Seattle Garbage Disposal



Monthly commercial tonnage for 1987-1989 estimated from annual data.