

GARBAGE REPORT

December 2006

Seattle Public Utilities, Strategic Asset Management Division, Asset Management Economic Services Section

Report Date: February 6, 2007

Phone: (206) 684-4143

Total City Tonnage Breakdown

Self Haul Cars ¹ in December:	620 Tons	20.4%	increase vs. same period in 2005
2006 Cumulative Self Haul Cars:	7,712 Tons	3.0%	increase vs. same period in 2005
Self Haul Trucks ² in December:	7,456 Tons	12.9%	increase vs. same period in 2005
2006 Cumulative Self Haul Trucks:	95,711 Tons	2.9%	increase vs. same period in 2005
2006 Cumulative Self Haul Cars & Trucks:	103,422 Tons	2.9%	increase vs. same period in 2005
Residential Collection in December:	12,082 Tons	9.1%	increase vs. same period in 2005
2006 Cumulative Residential Collection:	133,774 Tons	0.6%	decrease vs. same period in 2005
Commercial Tons in December:	16,857 Tons	0.5%	decrease vs. same period in 2005
2006 Cumulative Commercial Tons:	201,222 Tons	2.2%	decrease vs. same period in 2005
Total Tons Disposed in December:	37,016 Tons	5.3%	increase vs. same period in 2005
2006 Cumulative Total Tons Disposed:	438,419 Tons	0.6%	decrease vs. same period in 2005

Selected Statistics for Residential Collection Service

Cumulative Residential Collection Tons through December 2006:

Collected by Waste Management:	50,687 Tons	1.9%	decrease vs. same period in 2005
Collected by Rabanco:	83,087 Tons	0.2%	increase vs. same period in 2005

Recycling & Disposal Station Self Haul Garbage Rates³:

Cars: \$14.00 per trip Trucks: \$99.15 per ton (\$14.00 minimum)

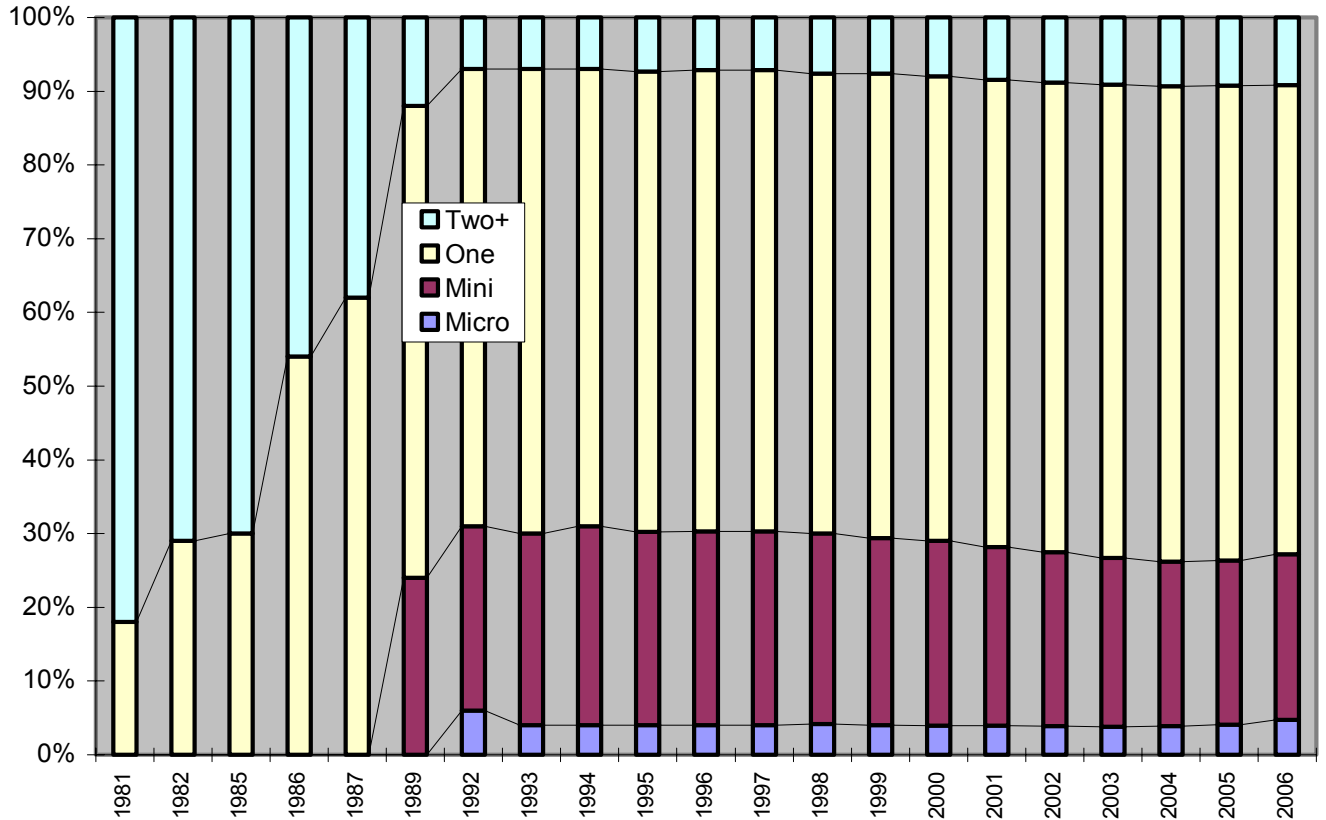
Variable Can Customer Service Levels

¹ Car tons calculated based on 378.8 pounds per car for 2001 & 2002 according to study done from Jan-Dec 2000

² An estimated 53% of the self-haul truck tons are commercial according to a waste stream sampling study conducted in 2000.

³ Vans & pickup trucks pay the per ton truck rate.

SERVICE LEVEL CHOICES OF SEATTLE'S VARIABLE CAN CUSTOMERS



	Micro	Mini	One	Two+
1981			18.00%	82.00%
1982			29.00%	71.00%
1985			30.00%	70.00%
1986			54.00%	46.00%
1987			62.00%	38.00%
1989		24.00%	64.00%	12.00%
1992	6.00%	25.00%	62.00%	7.00%
1993	4.00%	26.00%	63.00%	7.00%
1994	4.00%	27.00%	62.00%	7.00%
1995	4.06%	26.15%	62.44%	7.35%
1996	4.04%	26.23%	62.59%	7.14%
1997	4.04%	26.23%	62.59%	7.14%
1998	4.16%	25.88%	62.35%	7.61%
1999	4.06%	25.60%	63.62%	7.72%
2000	3.93%	25.08%	63.02%	7.97%
2001	3.95%	24.18%	63.16%	8.71%
2002	3.84%	23.57%	63.58%	9.02%
2003	3.83%	22.81%	64.10%	9.26%
2004	3.85%	22.27%	64.42%	9.46%
2005	4.12%	22.18%	64.27%	9.43%
2006	4.72%	22.49%	63.57%	9.21%

Monthly Variable Can Rates:

Micro (12 gal)	\$10.05
Mini (19 gal)	\$12.35
One Can (32 gal)	\$16.10
Two Cans (64 gal)	\$32.20
Each Add'l Can	\$16.10

Residential Dumpster Service⁴

Most Common Monthly Rate
\$82.50 (+ \$.60 per unit)

⁴ This is the rate for a one cubic yard container picked up once per week, which is the most common dumpster service level. Residential dumpster service rates vary based on the number and size of containers, the number of pickups per week, and the number of dwelling units.

CITY OF SEATTLE GARBAGE TONNAGE REPORT

		SELF HAUL GARBAGE			RESIDENTIAL GARBAGE						COMMERCIAL GARBAGE						GRAND TOTAL		
Year	Month	Total		Self Haul	City ¹ Stations		Private Stations		Residential Garbage	Waste Management			Rabanco				TOTAL	GARBAGE DISPOSED	
		Cars ²	Trucks		NRDS & SRDS	Res Co-Collect at RDS ¹⁶	Res Co-Collect at Lander ¹⁶	Diverted Tons ⁹ WM		Rabanco	NRDS & SRDS ¹⁴	Eastmont/ ¹⁰ 3rd & Lander ¹⁵	Total WM	NRDS & SRDS ¹⁴	Com'l Co-Collect at RDS ¹⁶	Com'l Co-Collect at Lander ¹⁶			3rd & Lander
2005	1	582	7,036	7,618	11,070		9	29	11,108	3,046	2,421	5,468	4,863		6,525	11,388	16,856	35,582	
2005	2	531	6,543	7,074	9,751		0	0	9,751	2,870	2,164	5,034	4,668		5,792	10,460	15,494	32,318	
2005	3	592	7,341	7,933	11,495		0	0	11,495	3,123	2,680	5,803	5,269		6,812	12,081	17,884	37,312	
2005	4	592	7,512	8,105	10,577	535	81	0	11,195	2,961	2,595	5,556	4,382	306	143	6,399	11,230	16,786	36,086
2005	5	631	8,406	9,037	8,705	2,405	238	0	11,361	3,324	2,187	5,511	2,621	1,782	637	6,389	11,429	16,940	37,338
2005	6	686	8,523	9,209	8,343	2,785	372	0	11,900	3,571	2,430	6,001	3,225	1,787	1,014	6,107	12,133	18,134	39,244
2005	7	769	8,664	9,433	8,012	2,625	228	0	10,918	3,017	2,333	5,350	2,928	1,594	935	6,178	11,636	16,985	37,336
2005	8	749	8,886	9,635	8,322	2,771	498	0	11,769	3,145	2,654	5,799	3,147	1,666	1,073	6,679	12,565	18,365	39,768
2005	9	684	8,337	9,020	8,249	2,963	251	0	11,468	2,955	2,481	5,436	3,188	1,804	842	6,454	12,288	17,724	38,212
2005	10	632	8,316	8,948	7,492	2,657	636	0	10,947	2,785	2,346	5,131	3,000	1,943	465	6,097	11,505	16,636	36,531
2005	11	523	6,842	7,365	8,259	2,727	536	0	11,569	2,896	2,350	5,246	3,127	2,267	445	5,984	11,823	17,070	36,003
2005	12	515	6,606	7,121	7,876	2,545	627	0	11,079	2,868	2,312	5,179	3,348	2,176	536	5,705	11,766	16,945	35,145
2006	1	561	6,650	7,211	8,394	2,730	621	0	11,750	3,108	2,422	5,530	3,574	2,279	519	5,464	11,836	17,365	36,326
2006	2	497	6,466	6,963	6,963	2,286	511	0	9,760	2,496	2,279	4,775	3,133	1,995	446	4,453	10,027	14,802	31,525
2006	3	583	7,481	8,064	7,882	2,640	519	0	11,139	2,912	2,647	5,560	3,356	2,322	456	5,482	11,617	17,177	36,380
2006	4	648	7,442	8,090	6,794	2,351	490	30	9,932	2,701	2,264	4,965	2,859	1,995	416	5,261	10,530	15,495	33,517
2006	5	684	8,724	9,409	7,982	2,621	715	194	11,796	2,972	2,599	5,571	2,882	2,233	596	6,233	11,944	17,515	38,719
2006	6	690	9,038	9,728	6,412	2,241	1,061	514	11,668	2,023	3,608	5,631	2,712	1,975	914	6,221	11,822	17,453	38,850
2006	7	804	9,159	9,964	7,602	2,417	654	0	10,792	3,009	2,719	5,729	2,288	1,912	517	6,183	10,901	16,629	37,385
2006	8	778	9,297	10,075	8,419	2,443	760	82	11,782	2,766	3,269	6,035	2,666	2,057	640	6,536	11,899	17,934	39,791
2006	9	721	8,698	9,418	7,815	2,288	685	0	10,861	2,761	2,607	5,368	2,729	2,013	589	5,757	11,087	16,455	36,734
2006	10	631	8,527	9,159	7,955	2,467	644	0	11,087	2,768	2,481	5,248	2,750	2,127	556	6,048	11,481	16,729	36,974
2006	11	494	6,772	7,266	7,644	2,595	700	150	11,126	2,890	2,422	5,311	3,055	2,205	595	5,642	11,497	16,809	35,200
2006	12	620	7,456	8,077	8,935	2,327	771	0	12,082	2,820	2,573	5,393	2,839	1,951	646	6,028	11,465	16,857	37,016
Total 2006		7,712	95,711	103,422	92,796	29,405	8,131	969	133,774	33,228	31,889	65,117	34,843	25,063	6,891	69,308	136,106	201,222	438,419
Total 2005		7,487	93,011	100,499	108,149	22,011	3,467	9	134,559	36,561	28,955	65,516	43,767	15,325	6,091	75,120	140,303	205,819	440,876
Total 2004		7,723	92,043	99,766	131,011			3,118	142,527	20,547	48,698	69,246	32,492			114,374	146,867	216,112	458,405
Total 2003		7,386	93,845	101,232	138,090			1,845	143,532	999	69,717	70,716	28,843			113,688	142,531	213,247	458,010
Total 2002		7,353	95,537	102,891	141,951			554	142,910	8,237	65,413	73,650	31,135			112,409	143,544	217,195	462,996
Total 2001		6,818	95,487	102,305	144,011			9	144,559		82,472	82,472				145,933	145,933	228,405	475,270
Total 2000		6,323	95,560	101,883	144,595			368	145,832		91,722	91,722				136,695	136,695	228,417	476,132
Total 1999 ¹³		6,989	97,378	104,367	147,718				147,718		85,952	85,952				139,396	139,396	225,348	477,433
Total 1998		16,883	81,136	98,019	143,704			2,230	145,934		80,217	80,217				133,429	133,429	213,646	457,598
Total 1997		15,750	81,396	97,146	147,956			16	147,972		79,053	79,053				129,617	129,617	208,670	453,787
Total 1996 ¹²		13,777	70,091	83,868	143,327			962	144,289		71,448	71,448				123,521	123,521	194,969	423,127
Total 1995 ⁸		13,279	71,208	84,487	145,654			572	146,226		75,581	75,581				121,121	121,121	196,702	427,415
Total 1994		13,064	74,291	87,354	148,023			2,043	150,066		75,144	75,144				119,623	119,623	194,767	432,187
Total 1993		8,665	76,853	85,518	144,127				144,127		73,915	73,915				126,676	126,676	200,591	430,236
Total 1992		8,178	80,742	88,920	142,154				142,154		68,742	68,742				125,596	125,596	194,338	425,412
Total 1991		7,947	68,576	76,523	140,722				140,722		74,389	74,389				147,868	147,868	222,257	439,502
Total 1990 ³		7,253	73,939	81,192	140,528				140,528		78,461	78,461				157,664	157,664	236,125	457,845
Total 1989 ^{4,5}		6,919	58,720	65,639	143,221				143,221		75,513	75,513				121,029	121,029	196,542	405,402
Total 1988 ⁶		11,810	75,557	87,367	179,966				179,966		72,680	72,680				125,494	125,494	198,174	465,507
Total 1987 ⁷		13,622	88,147	101,769	188,800				188,800		55,212	55,212				170,703	170,703	225,915	516,484
Total 1986		25,278	105,442	130,720	190,584				190,584		50,947	50,947				151,189	151,189	202,136	523,440

1 There are two city owned recycling and disposal stations, one in the North end of the City (NRDS) and one in the South (SRDS).

2 Car weight estimate of 378.8 pounds per car based on study done from Jan - Dec 2000

Car weight estimate for 1999/2000 based on 333 pounds per car

Car weight estimate for 1998 based on 433 pounds per car.

Car weight estimate for 1994/95 based on 290 pounds per car.

3 Wood Waste Program at city owned transfer stations began in January, 1990

4 Apartment Recycling Program began in May, 1989

5 Curbside Yard Waste Collection began in January, 1989

6 Curbside Recycling Program began in February, 1988

7 Yard Waste "Clean Green" Program began in August, 1987

8 3,220 tons of residuals from the yard waste program were returned to SRDS

in 1995 but not weighed in. These have been added in as self haul truck tons. 2/5/2007

9 When tons are diverted to a private station it is usually due to equipment failure or maintenance.

10 Eastmont figures are "incoming" tons as reported by Waste Management.

11 Rabanco's tons are "incoming" beginning 1/1/1999 as reported by Rabanco.

12 158 commercial tons were taken to Klickitat from Rabanco in May 96 due to container shortages. These tons have been added back in the above table.

13 The large decrease in car tons from '98 to '99 is attributable to two factors. There was an increase in the per ton "car" rate from \$8.50 to \$13.00.

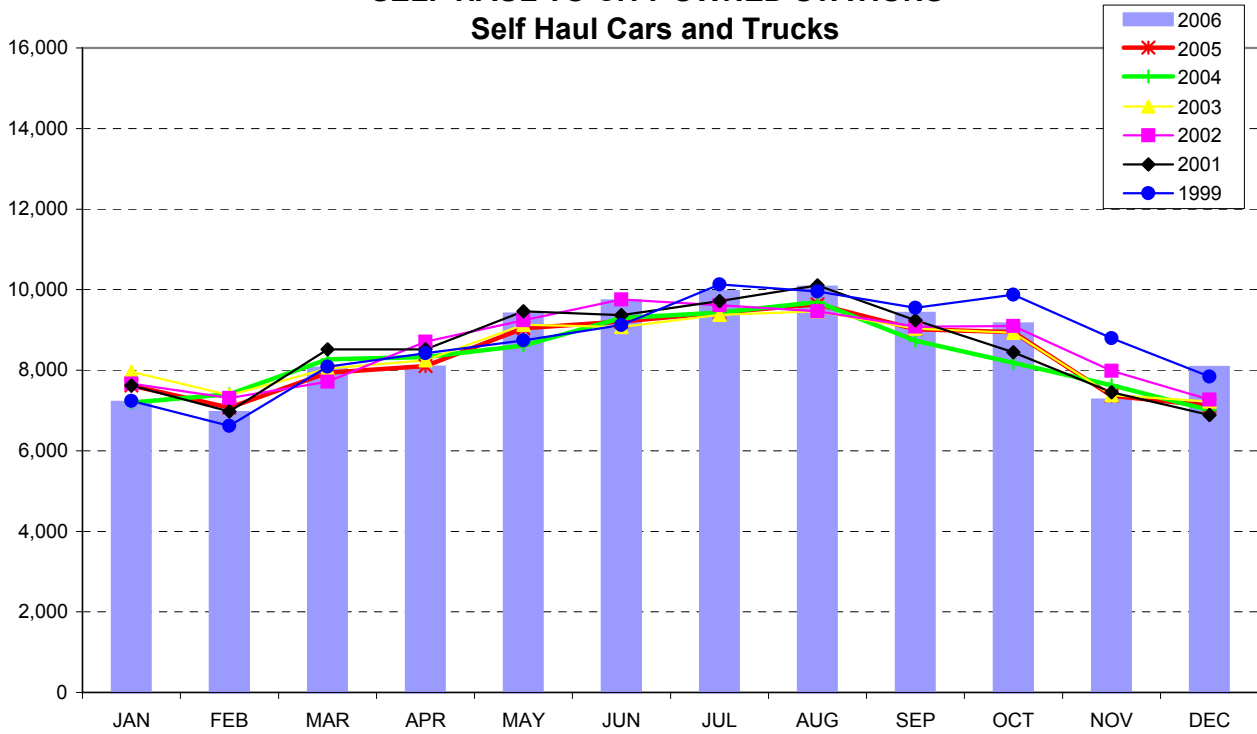
In addition, vans/pick-ups are no longer considered as "car" rate & must pay the per ton rate as "trucks".

14 Beginning Jan 18, 2002 a portion of commercial garbage coming to city transfer stations.

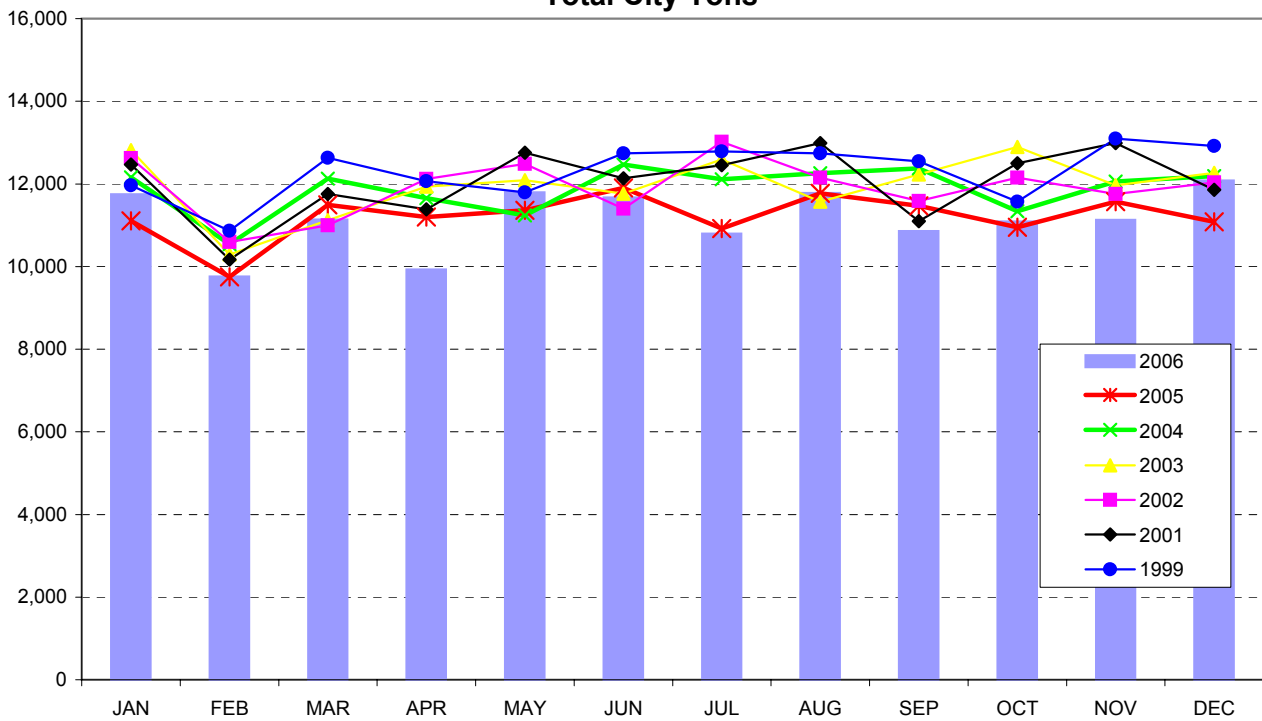
15 Beginning June 2004 Eastmont Station closed to commercial garbage. WM comm. Garb. now transferred at city stations or 3rd & Lander after hours.

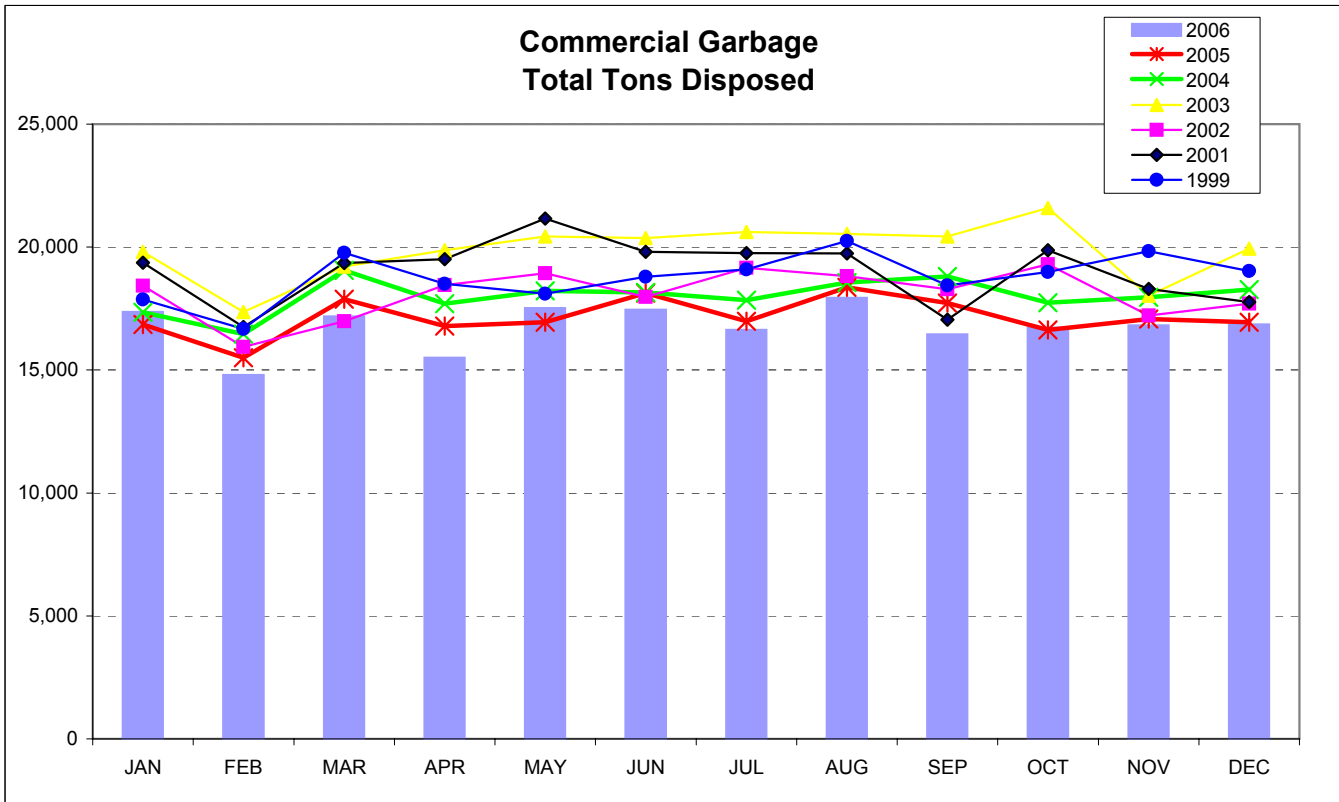
16 Beginning April 2005 Rabanco began Co-Collecting multi-family residential and commercial garbage in the same truck.

SELF HAUL TO CITY OWNED STATIONS Self Haul Cars and Trucks

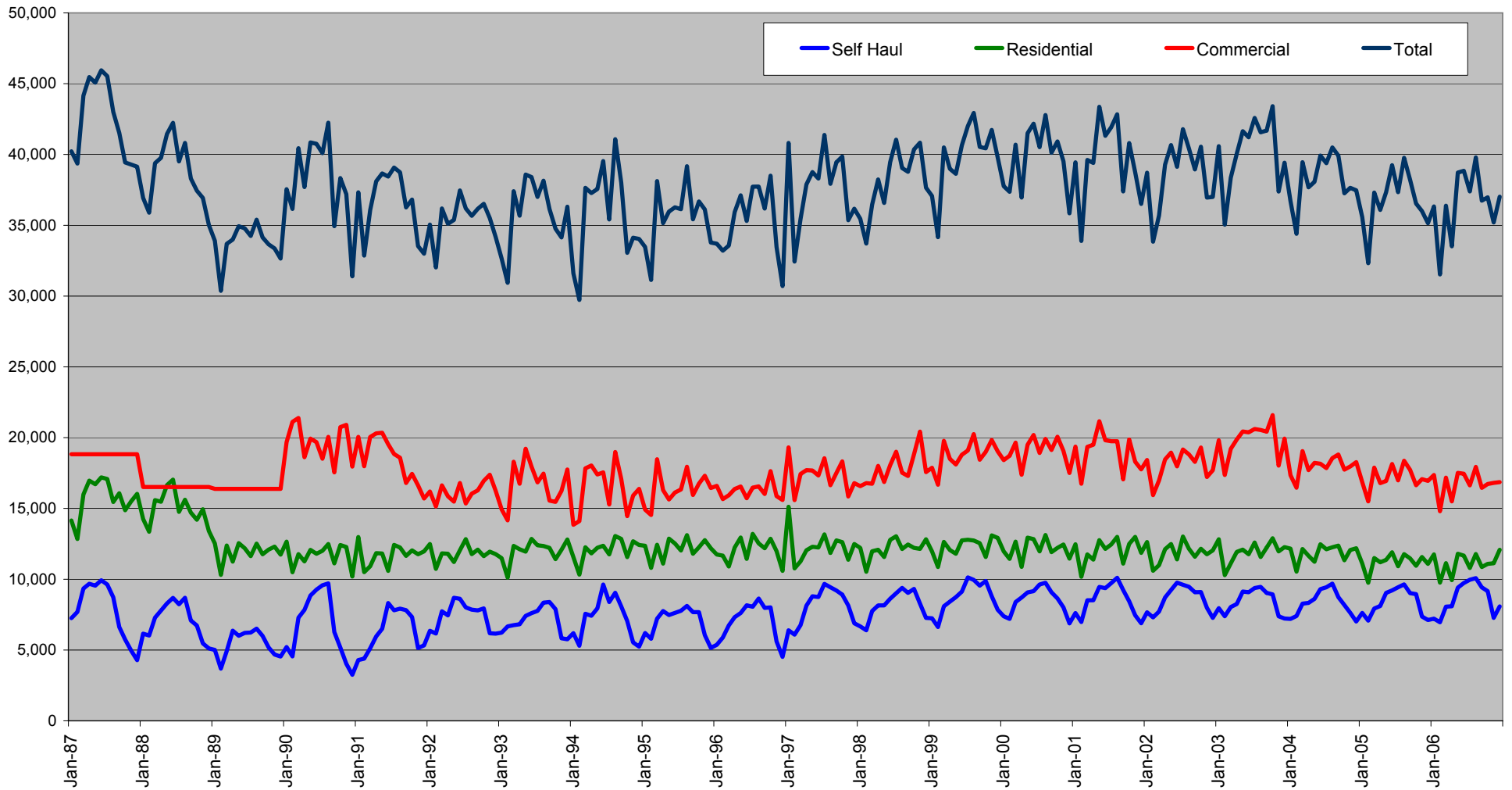


RESIDENTIAL COLLECTION Total City Tons





City of Seattle Garbage Disposal



Monthly commercial tonnage for 1987-1989 estimated from annual data.