

# GARBAGE REPORT

December 2004

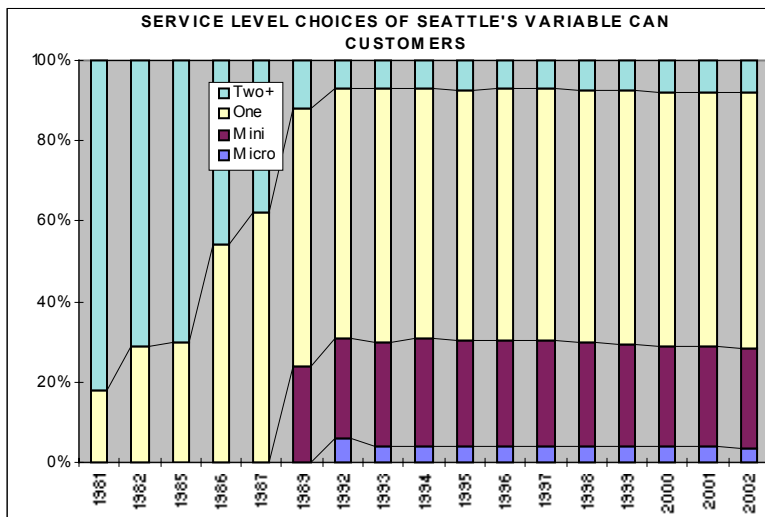
Seattle Public Utilities, Resource Planning Division, Forecasting & Evaluation Section

Report Date: February 3, 2005

Phone: (206) 684-4143

## Total City Tonnage Breakdown

Self Haul Cars <sup>1</sup> in December:	509 Tons	0.8%	decrease vs. same period in 2003
2004 Cumulative Self Haul Cars:	7,706 Tons	4.6%	increase vs. same period in 2003
Self Haul Trucks <sup>2</sup> in December:	6,498 Tons	3.1%	decrease vs. same period in 2003
2004 Cumulative Self Haul Trucks:	92,043 Tons	1.9%	decrease vs. same period in 2003
2004 Cumulative Self Haul Cars & Trucks:	99,750 Tons	1.4%	decrease vs. same period in 2003
Residential Collection in December:	12,191 Tons	0.6%	decrease vs. same period in 2003
2004 Cumulative Residential Collection:	142,528 Tons	0.7%	decrease vs. same period in 2003
Commercial Tons in December:	17,992 Tons	1.9%	decrease vs. same period in 2003
2004 Cumulative Commercial Tons:	215,568 Tons	1.1%	increase vs. same period in 2003
Total Tons Disposed in December:	37,190 Tons	1.7%	decrease vs. same period in 2003
2004 Cumulative Total Tons Disposed:	457,846 Tons	0.0%	increase vs. same period in 2003



### Monthly Variable Can Rates:

Micro (12 gal)	\$10.05
Mini (19 gal)	\$12.35
One Can (32 gal)	\$16.10
Two Cans (64 gal)	\$32.20
Each Add'l Can	\$16.10

### Residential Dumpster Service<sup>3</sup> Most Common Monthly Rate

\$82.50 (+ \$.60 per unit)

## Selected Statistics for Residential Collection Service

Cumulative Residential Collection Tons through December 2004:

- Collected by Waste Management: 51,793 Tons 7.5% decrease vs. same period in 2003
- Collected by Rabanco: 79,296 Tons 9.4% decrease vs. same period in 2003

## Recycling & Disposal Station Self Haul Garbage Rates<sup>4</sup>:

Cars: \$14.00 per trip

Trucks: \$99.15 per ton (\$14.00 minimum)

<sup>1</sup> Car tons calculated based on 378.8 pounds per car for 2001 & 2002 according to study done from Jan-Dec 2000

<sup>2</sup> An estimated 53% of the self-haul truck tons are commercial according to a waste stream sampling study conducted in 2000.

<sup>3</sup> This is the rate for a one cubic yard container picked up once per week, which is the most common dumpster service level. Residential dumpster service rates vary based on the number and size of containers, the number of pickups per week, and the number of dwelling units.

<sup>4</sup> Vans & pickup trucks pay the per ton truck rate.

**CITY OF SEATTLE GARBAGE TONNAGE REPORT 2003-2004**

		SELF HAUL GARBAGE			RESIDENTIAL GARBAGE				COMMERCIAL GARBAGE						GRAND		
		Total			City <sup>1</sup> Stations		Private Stations		Total	Waste Management			Rabanco			TOTAL	TOTAL
Year	Month	Cars <sup>2</sup>	Trucks	Self Haul	NRDS & SRDS	Diverted Tons <sup>9</sup> WM	Rabanco	Resident Garbage	NRDS & SRDS <sup>14</sup>	Eastmont/ <sup>10</sup> 3rd & Lander <sup>15</sup>	Total WM	NRDS & SRDS <sup>14</sup>	3rd & Lander	Total Rabanco	Commer Garbage	GARBAGE DISPOSED	
2003	1	553	7,406	7,959	12,592	133	95	12,820	181	5,993	6,174	1,924	10,014	11,938	18,112	38,891	
2003	2	441	6,940	7,381	10,291	0	0	10,291	385	4,903	5,288	1,546	8,859	10,405	15,693	33,364	
2003	3	552	7,486	8,037	11,119	0	0	11,119	372	5,252	5,624	1,359	10,181	11,540	17,164	36,320	
2003	4	566	7,681	8,248	11,601	116	218	11,935	6	6,121	6,127	1,879	9,682	11,561	17,688	37,871	
2003	5	714	8,412	9,125	12,086	0	0	12,086	0	6,063	6,063	2,111	9,896	12,008	18,070	39,282	
2003	6	699	8,375	9,074	11,205	77	482	11,764	6	5,989	5,995	2,581	9,359	11,939	17,935	38,773	
2003	7	730	8,645	9,375	12,590	0	0	12,590	9	5,934	5,943	2,940	9,381	12,321	18,263	40,229	
2003	8	782	8,676	9,458	11,249	114	204	11,566	36	5,810	5,846	2,806	9,454	12,260	18,106	39,130	
2003	9	657	8,372	9,030	11,780	186	265	12,231	2	6,019	6,021	3,370	8,795	12,165	18,186	39,447	
2003	10	584	8,342	8,926	11,485	437	972	12,894	0	6,444	6,444	3,110	9,921	13,031	19,475	41,294	
2003	11	579	6,803	7,382	10,099	611	1258	11,968	1	5,244	5,246	2,435	8,524	10,959	16,205	35,555	
2003	12	513	6,708	7,221	11,994	171	102	12,268	0	5,946	5,946	2,782	9,621	12,403	18,349	37,838	
2004	1	580	6,613	7,194	12,050	45	65	12,160	0	5,589	5,589	2,804	8,949	11,754	17,343	36,697	
2004	2	528	6,873	7,402	10,538	0	0	10,538	0	5,463	5,463	2,603	8,393	10,995	16,459	34,398	
2004	3	590	7,681	8,271	12,129	3	0	12,132	0	6,185	6,185	2,794	10,071	12,865	19,050	39,453	
2004	4	595	7,730	8,324	10,882	250	523	11,654	3	5,845	5,848	2,969	8,886	11,855	17,703	37,682	
2004	5	699	7,910	8,609	6,470	361	4405	11,236	0	6,036	6,036	2,724	9,460	12,184	18,221	38,066	
2004	6	699	8,595	9,293	10,192	886	1394	12,472	2,516	3,137	5,654	479	12,025	12,505	18,159	39,924	
2004	7	767	8,659	9,426	11,650	214	249	12,114	2,942	2,534	5,476	3,073	9,299	12,372	17,848	39,388	
2004	8	806	8,881	9,687	11,985	216	57	12,258	3,274	2,579	5,852	2,664	10,035	12,699	18,552	40,496	
2004	9	727	8,005	8,732	11,535	390	448	12,373	3,130	3,136	6,266	1,845	10,695	12,540	18,806	39,911	
2004	10	627	7,552	8,179	10,724	0	616	11,340	2,626	2,878	5,504	2,952	9,282	12,235	17,739	37,258	
2004	11	579	7,045	7,625	11,420	425	217	12,061	2,851	2,738	5,589	2,875	9,233	12,108	17,697	37,383	
2004	12	509	6,498	7,007	11,438	329	424	12,191	3,205	2,577	5,783	4,709	7,500	12,210	17,992	37,190	
Total 2004		7,706	92,043	99,750	131,012	3,118	8,398	142,528	20,547	48,698	69,246	32,492	113,830	146,322	215,568	457,846	
Total 2003		7,371	93,845	101,216	138,090	1,845	3,596	143,532	999	69,717	70,716	28,843	113,688	142,531	213,247	457,994	
Total 2002		7,353	95,537	102,891	141,951	553.68	405.89	142,910	8,237	65,413	73,650	31,135	112,409	143,544	217,195	462,996	
Total 2001		6,818	95,487	102,305	144,011	9	539	144,559		82,472	82,472		145,933	145,933	228,405	475,270	
Total 2000		6,323	95,560	101,883	144,595	368	869	145,832		91,722	91,722		136,695	136,695	228,417	476,132	
Total 1999 <sup>13</sup>		6,989	97,378	104,367	147,718			147,718		85,952	85,952		139,396	139,396	225,348	477,433	
Total 1998		16,883	81,136	98,019	143,704		2,230	145,934		80,217	80,217		133,429	133,429	213,646	457,598	
Total 1997		15,750	81,396	97,146	147,956		16	147,972		79,053	79,053		129,617	129,617	208,670	453,787	
Total 1996 <sup>12</sup>		13,777	70,091	83,868	143,327		962	144,289		71,448	71,448		123,521	123,521	194,969	423,127	
Total 1995 <sup>8</sup>		13,279	71,208	84,487	145,654		572	146,226		75,581	75,581		121,121	121,121	196,702	427,415	
Total 1994		13,064	74,291	87,354	148,023		2,043	150,066		75,144	75,144		119,623	119,623	194,767	432,187	
Total 1993		8,665	76,853	85,518	144,127			144,127		73,915	73,915		126,676	126,676	200,591	430,236	
Total 1992		8,178	80,742	88,920	142,154			142,154		68,742	68,742		125,596	125,596	194,338	425,412	
Total 1991		7,947	68,576	76,523	140,722			140,722		74,389	74,389		147,868	147,868	222,257	439,502	
Total 1990 <sup>3</sup>		7,253	73,939	81,192	140,528			140,528		78,461	78,461		157,664	157,664	236,125	457,845	
Total 1989 <sup>4,5</sup>		6,919	58,720	65,639	143,221			143,221		75,513	75,513		121,029	121,029	196,542	405,402	
Total 1988 <sup>6</sup>		11,810	75,557	87,367	179,966			179,966		72,680	72,680		125,494	125,494	198,174	465,507	
Total 1987 <sup>7</sup>		13,622	88,147	101,769	188,800			188,800		55,212	55,212		170,703	170,703	225,915	516,484	
Total 1986		25,278	105,442	130,720	190,584			190,584		50,947	50,947		151,189	151,189	202,136	523,440	

1 There are two city owned recycling and disposal stations, one in the North end of the City (NRDS) and one in the South (SRDS).

2 Car weight estimate of 378.8 pounds per car based on study done from Jan - Dec 2000

Car weight estimate for 1999/2000 based on 333 pounds per car

Car weight estimate for 1998 based on 433 pounds per car.

Car weight estimate for 1994/95 based on 290 pounds per car.

3 Wood Waste Program at city owned transfer stations began in January, 1990

4 Apartment Recycling Program began in May, 1989

5 Curbside Yard Waste Collection began in January, 1989

6 Curbside Recycling Program began in February, 1988

7 Yard Waste "Clean Green" Program began in August, 1987

8 3,220 tons of residuals from the yard waste program were returned to SRDS in 1995 but not weighed in. These have been added in as self haul truck tons.

9 When tons are diverted to a private station it is usually due to equipment failure or maintenance.

10 Eastmont figures are "incoming" tons as reported by Waste Management.

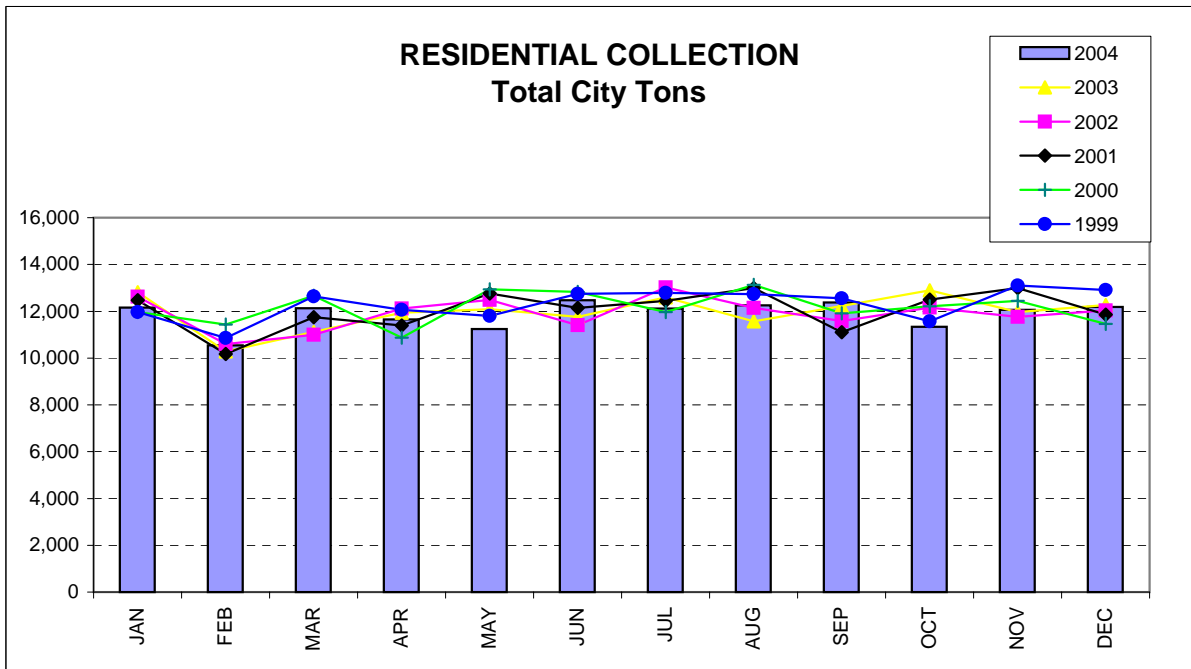
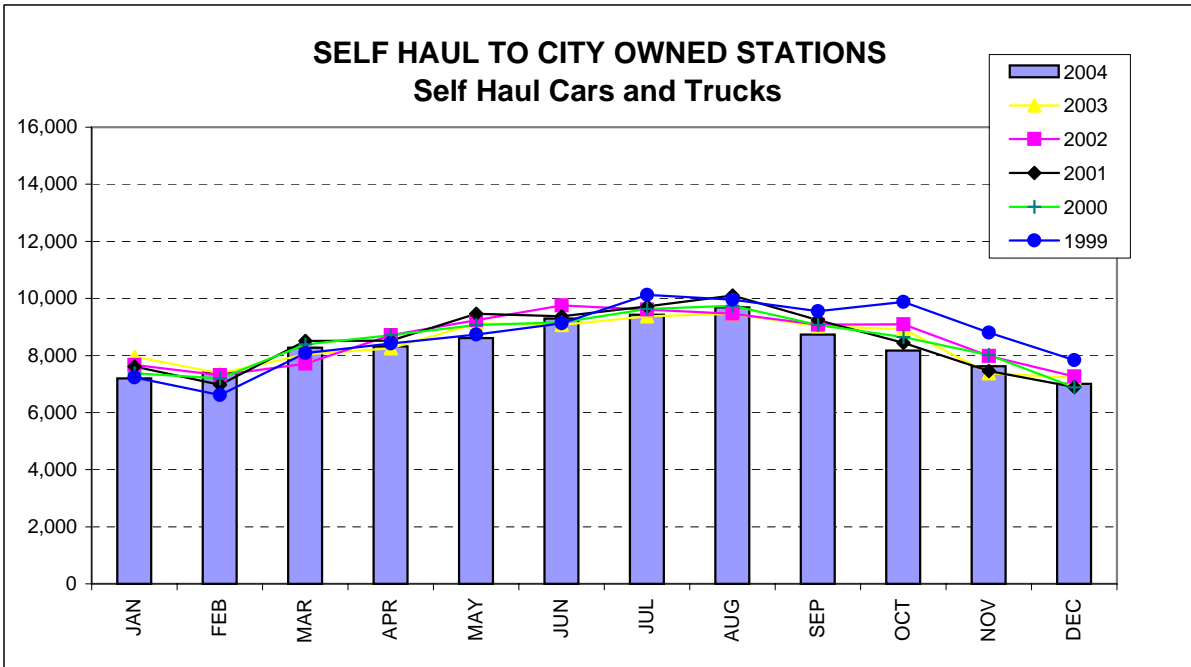
11 Rabanco's tons are "incoming" beginning 1/1/1999 as reported by Rabanco.

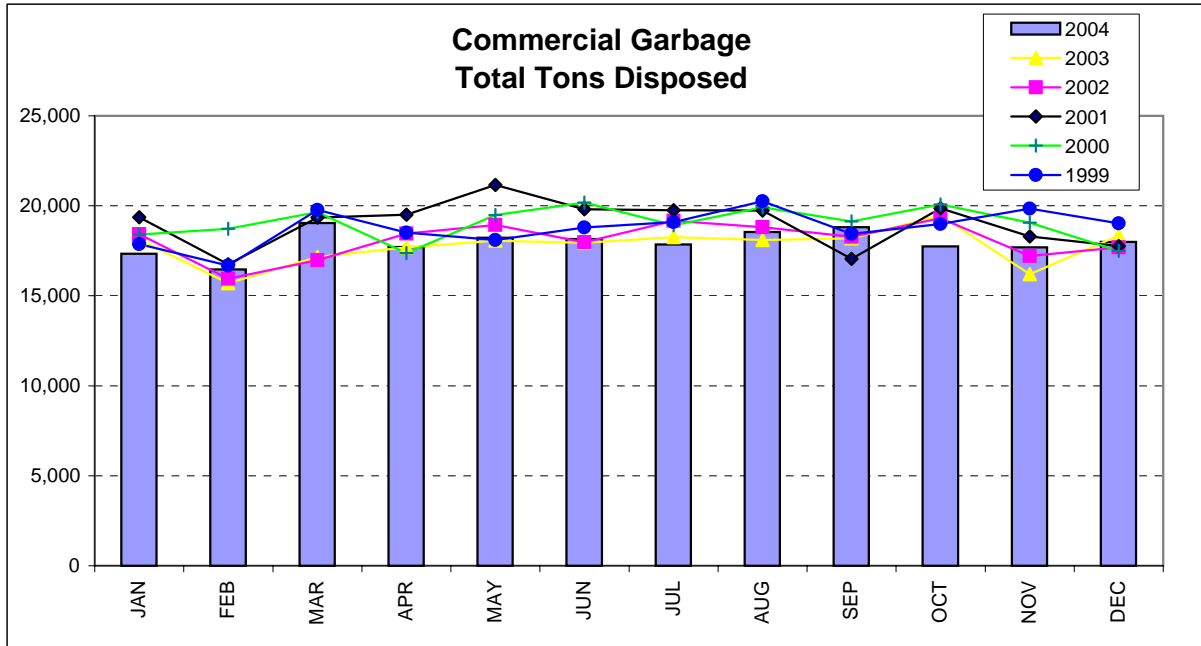
12 158 commercial tons were taken to Klickitat from Rabanco in May '96 due to container shortages. These tons have been added back in the above table.

13 The large decrease in car tons from '98 to '99 is attributable to two factors. There was an increase in the per ton "car" rate from \$8.50 to \$13.00. In addition, vans/pick-ups are no longer considered as "car" rate & must pay the per ton rate as "trucks."

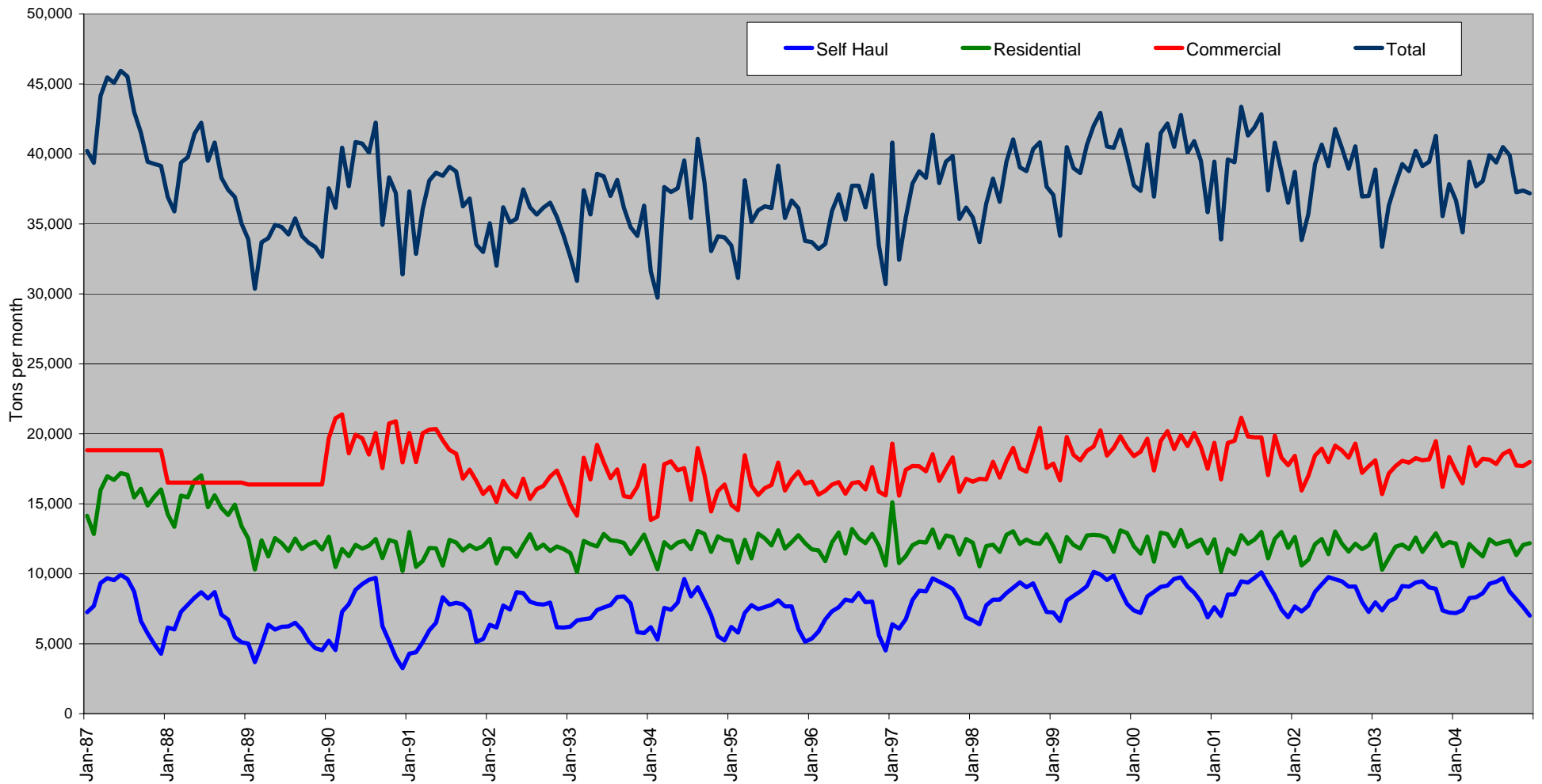
14 Beginning Jan 18, 2002 a portion of commercial garbage coming to city transfer stations.

15 Beginning June 2004, Eastmont Station closed to commercial garbage. WM comm. Garb. now transferred at city stations or 3rd & Lander after hours.





# City of Seattle Garbage Disposal



Monthly commercial tonnage for 1987-1989 estimated from annual data.