

# APARTMENT RECYCLING REPORT

December 2003

Seattle Public Utilities, Resource Planning Division, Forecasting & Evaluation Section

Report Date: January 20, 2004

Phone: (206) 684-4143

## Tonnage Summary (without contaminants)

### North End Tons (WM):

December 2003:	485 Tons	9.6% increase vs. same period in 2002
Cumulative Jan – Dec:	5,099 Tons	5.6% increase vs. same period in 2002

### South End Tons (USD):

December 2003:	878 Tons	9.3% increase vs. same period in 2002
Cumulative Jan – Dec:	9,249 Tons	8.6% increase vs. same period in 2002

### Citywide Tons:

December 2003:	1,362 Tons	9.4% increase vs. same period in 2002
Cumulative Jan - Dec:	14,348 Tons	7.5% increase vs. same period in 2002

## **Basics of City-Sponsored Apartment Recycling Program**

Before April 1, 2000, Seattle Public Utilities hired four private contractors to collect multi-family recycling. Each collected different materials and used different kinds of containers. With the new contracts, SPU uses only two contractors and the materials collected and containers used for set-out are uniform throughout the city. Further, the range of materials is broader (including more types of paper and plastics) and is the same range of materials picked up at single-family residences.

### **Service Areas:**

- North End: Waste Management services the area north of the Ship Canal.
- South End: USD services the area south of the Ship Canal.

### **Materials:**

- Commingled collection with separate container for glass
- Service must include collection of aluminum, glass, mixed paper, newspaper, tin, plastic, plastic bags, plastic food tubs, as well as milk & juice cartons.

## **Subscription Status as of December 2003:**

	Buildings Signed Up	Units Signed Up	Eligible Buildings	Eligible Units	% Bldgs Signed Up	% Units Signed Up
North End	1,832	31,757	2,139	36,494	85.6%	87.0%
South End	2,690	61,979	3,394	75,328	79.3%	82.3%
Citywide	4,522	93,736	5,533	111,822	81.7%	83.8%

## **Service Type Details:**

Multi-Family buildings with dumpster garbage service can choose either apartment recycling service or single-family style curbside service. Most buildings with five or fewer units choose single-family style curbside service.

	Bldgs with Curb Recycling	Bldgs with Apt Recycling	Total Buildings with Recycling	Units with Curb Recycling	Units with Apt Recycling	Total Units with Recycling
North End	240	1,592	1,832	1,194	30,563	31,757
South End	382	2,308	2,690	2,448	59,531	61,979
Citywide	622	3,900	4,522	3,642	90,094	93,736

**APARTMENT RECYCLING PROGRAM**

NORTH END TONNAGE DATA													Sign-Up Data				
Yr	Mo	ALUM	FERROUS METAL	GLASS	MIXED PAPER	NEWS-PAPER	PLASTIC (PET/HDPE)	TIN	CONTAM-INANTS	TOTAL w/cont	TOTAL w/o cont	Bldgs	Units	Units/Bldg	Lbs/Bldg	Lbs/Unit	
2002	1	2.5	0.6	64.5	173.0	165.3	7.6	3.9	12.3	429.7	417.4	NA	NA	NA	NA	NA	
2002	2	2.1	0.5	54.4	146.2	139.6	6.4	3.3	10.4	362.9	352.6	NA	NA	NA	NA	NA	
2002	3	2.0	0.5	53.0	142.2	135.8	6.2	3.2	10.1	353.0	342.9	1,732	29,212	16.9	396.0	23.5	
2002	4	2.4	0.6	62.2	167.1	159.6	7.3	3.8	11.8	414.9	403.1	1,732	29,212	16.9	465.5	27.6	
2002	5	2.4	0.6	63.3	170.0	162.4	7.4	3.9	12.0	422.1	410.1	1,736	29,269	16.9	472.4	28.0	
2002	6	2.3	0.6	60.1	161.4	154.2	7.1	3.7	11.4	400.8	389.4	1,742	29,398	16.9	447.0	26.5	
2002	7	2.4	0.6	63.9	171.6	163.9	7.5	3.9	12.2	426.1	413.9	1,751	29,493	16.8	472.8	28.1	
2002	8	2.5	0.6	65.0	174.5	166.7	7.6	4.0	12.4	433.4	421.0	1,766	29,672	16.8	476.8	28.4	
2002	9	2.4	0.6	63.0	169.2	161.6	7.4	3.9	12.0	420.1	408.1	1,774	30,154	17.0	460.1	27.1	
2002	10	2.5	0.6	65.5	175.9	168.0	7.7	4.0	12.5	436.7	424.2	1,790	30,524	17.1	474.0	27.8	
2002	11	2.4	0.6	62.4	167.5	160.0	7.3	3.8	11.9	415.8	404.0	1,793	30,502	17.0	450.6	26.5	
2002	12	2.6	0.7	68.3	183.4	175.2	8.0	4.2	13.0	455.4	442.4	1,795	30,525	17.0	492.9	29.0	
2003	1	2.6	0.7	67.4	180.9	172.8	7.9	4.1	12.8	449.1	436.3	1,796	30,544	17.0	485.8	28.6	
2003	2	2.1	0.5	55.6	149.4	142.7	6.5	3.4	10.6	371.0	360.4	1,799	30,568	17.0	400.6	23.6	
2003	3	2.3	0.6	59.9	160.8	153.6	7.0	3.7	11.4	399.3	387.9	1,798	30,597	17.0	431.5	25.4	
2003	4	2.5	0.6	64.5	173.3	165.5	7.6	3.9	12.3	430.2	417.9	1,802	30,681	17.0	463.9	27.2	
2003	5	2.4	0.6	62.9	169.0	161.4	7.4	3.8	12.0	419.5	407.5	1,803	30,717	17.0	452.1	26.5	
2003	6	2.5	0.6	64.6	173.5	165.8	7.6	3.9	12.3	430.9	418.6	1,802	30,778	17.1	464.5	27.2	
2003	7	2.7	0.7	70.0	188.0	179.6	8.2	4.3	13.3	466.9	453.6	1,809	31,251	17.3	501.5	29.0	
2003	8	2.4	0.6	62.3	167.3	159.8	7.3	3.8	11.9	415.3	403.5	1,818	31,385	17.3	443.9	25.7	
2003	9	2.6	0.7	68.3	183.2	175.0	8.0	4.2	13.0	455.0	442.0	1,817	31,372	17.3	486.5	28.2	
2003	10	2.8	0.7	72.5	194.7	186.0	8.5	4.4	13.8	483.5	469.7	1,829	31,668	17.3	513.6	29.7	
2003	11	2.5	0.6	64.4	172.9	165.2	7.6	3.9	12.3	429.4	417.1	1,830	31,716	17.3	455.9	26.3	
2003	12	2.9	0.7	74.9	201.0	192.0	8.8	4.6	14.2	499.0	484.8	1,832	31,757	17.3	529.2	30.5	
<b>2003 Total:</b>		30.1	7.7	787.4	2,114.1	2,019.5	92.4	48.1	149.8	5,249.1	5,099.2			<b>2003 AVG:</b>	<b>469.1</b>	<b>27.3</b>	
<b>2002 Total:</b>		28.5	7.2	745.7	2,002.0	1,912.4	87.5	45.6	141.9	4,970.9	4,829.0			2002 Avg:	460.8	27.2	
<b>2001 Total:</b>		28.1	7.1	735.2	1,973.7	1,885.4	86.3	44.9	139.9	4,900.6	4,760.7			2001 Avg: <sup>1</sup>	460.8	27.2	
<b>2000 Total:</b>		33.8	5.0	891.2	2,569.3	1,867.1	87.6	52.9	119.5	5,626.4	5,507.0			2000 Avg: <sup>3</sup>	NA	NA	
<b>1999 Total:</b>		66.5	NA	1,688.5	5,081.8	2,208.9	86.5	54.1	111.9	9,298.1	9,186.2			1999 Avg:	673.4	28.9	
<b>1998 Total:</b>		68.2	NA	1,626.6	4,507.7	2,452.0	98.8	93.7	129.0	8,976.0	8,847.0			1998 Avg:	694.7	29.6	
<b>1997 Total:</b>		66.2	NA	1,420.4	4,206.5	1,982.7	86.3	100.3	89.5	7,951.9	7,862.3			1997 Avg:	656.5	28.0	
<b>1996 Total:</b>		67.4	NA	1,332.8	2,863.2	2,531.1	77.7	100.3	61.8	7,034.3	6,972.5			1996 Avg:	629.8	25.9	
<b>1995 Total:</b>		47.2	NA	1,294.1	2,169.0	2,530.9	12.6	107.6	NA	6,161.3	6,161.3			1995 Avg:	633.5	24.8	
<b>1994 Total:</b>		48.4	NA	1,060.6	2,746.4	1,209.6	NA	98.8	NA	5,163.8	5,163.8			1994 Avg:	701.5	25.3	
<b>1993 Total:</b>		40.1	NA	724.1	2,483.9	66.4	NA	84.4	NA	3,398.9	3,398.9			1993 Avg:	740.1	23.1	
<b>1992 Total:</b>		NA	NA	733.4	1,436.2	503.9	NA	68.7	NA	2,742.1	2,742.1			1992 Avg:	845.9	27.9	
<b>1991 Total:</b>		NA	NA	409.9	661.2	659.3	NA	23.6	NA	1,754.0	1,754.0			1991 Avg:	777.1	25.5	
<b>1990 Total:</b>		NA	NA	228.7	500.8	358.4	NA	6.3	NA	1,094.2	1,094.2			1990 Avg:	712.1	22.8	
<b>1989 Total:</b>		NA	NA	69.9	42.7	192.8	NA	NA	NA	305.4	305.4			1989 Avg:	NA	NA	

NORTH END PERCENTAGE BREAKDOWN BY MATERIAL									
YEAR	ALUM	FERROUS METAL	GLASS	MIXED PAPER	NEWS-PAPER	PLASTIC (PET/HDPE)	TIN	CONTAM-INANTS	TOTAL w/cont
<b>2003 Avg:</b>	0.57%	0.15%	15.00%	40.28%	38.47%	1.76%	0.92%	2.85%	100%
<b>2002 Avg:</b>	0.57%	0.15%	15.00%	40.28%	38.47%	1.76%	0.92%	2.85%	100%
<b>2001 Avg:</b>	0.57%	0.15%	15.00%	40.28%	38.47%	1.76%	0.92%	2.85%	100%
<b>2000 Avg:</b>	0.69%	0.09%	15.84%	45.66%	33.18%	1.56%	0.94%	2.12%	100%
<b>1999 Avg:</b>	1.36%	NA	18.16%	54.65%	23.76%	0.93%	0.58%	1.20%	100%
<b>1998 Avg:</b>	1.39%	NA	18.12%	50.22%	27.32%	1.10%	1.04%	1.44%	100%
<b>1997 Avg:</b>	1.35%	NA	17.86%	52.90%	24.93%	1.09%	1.26%	1.13%	100%
<b>1996 Avg:</b>	1.38%	NA	18.95%	40.70%	35.98%	1.11%	1.43%	0.88%	100%
<b>1995 Avg:</b>	0.96%	NA	21.00%	35.20%	41.08%	0.20%	1.75%	NA	100%
<b>1994 Avg:</b>	0.99%	NA	20.54%	53.18%	23.42%	NA	1.91%	NA	100%
<b>1993 Avg:</b>	0.82%	NA	21.30%	73.08%	1.95%	NA	2.48%	NA	100%
<b>1992 Avg:</b>	NA	NA	26.74%	52.37%	18.38%	NA	2.50%	NA	100%
<b>1991 Avg:</b>	NA	NA	23.37%	37.69%	37.59%	NA	1.35%	NA	100%
<b>1990 Avg:</b>	NA	NA	20.90%	45.77%	32.76%	NA	0.58%	NA	100%
<b>1989 Avg:</b>	NA	NA	22.90%	13.97%	63.13%	NA	NA	NA	100%

**APARTMENT RECYCLING PROGRAM**

SOUTH END TONNAGE DATA													Sign-Up Data				
Yr	Mo	ALUM	FERROUS METAL	GLASS	MIXED PAPER	NEWS-PAPER	PLASTIC (PET/HDPE)	TIN	CONTAM-INANTS	TOTAL w/cont	TOTAL w/o cont	Bldgs	Units	Units/ Bldg	Lbs/ Bldg	Lbs/ Unit	
2002	1	3.2	1.4	116.2	275.0	213.2	10.1	4.8	19.1	642.9	623.8	NA	NA	NA	NA	NA	
2002	2	3.1	1.4	113.5	268.6	208.3	9.9	4.7	18.7	628.2	609.5	NA	NA	NA	NA	NA	
2002	3	3.2	1.4	116.3	275.2	213.4	10.1	4.8	19.1	643.4	624.3	2,561	59,306	23.2	487.5	21.1	
2002	4	3.4	1.5	126.8	300.1	232.7	11.0	5.3	20.8	701.7	680.9	2,561	59,306	23.2	531.7	23.0	
2002	5	3.8	1.7	139.1	329.2	255.3	12.1	5.8	22.9	769.8	746.9	2,571	59,668	23.2	581.0	25.0	
2002	6	3.5	1.6	130.6	309.2	239.8	11.3	5.4	21.5	723.0	701.5	2,587	59,799	23.1	542.3	23.5	
2002	7	3.8	1.7	141.9	335.9	260.5	12.3	5.9	23.3	785.5	762.2	2,594	59,881	23.1	587.6	25.5	
2002	8	3.7	1.7	137.2	324.6	251.8	11.9	5.7	22.5	759.1	736.5	2,602	60,314	23.2	566.1	24.4	
2002	9	3.6	1.6	133.9	316.8	245.7	11.6	5.6	22.0	740.9	718.9	2,614	60,621	23.2	550.0	23.7	
2002	10	3.9	1.8	143.9	340.5	264.1	12.5	6.0	23.6	796.3	772.6	2,632	61,087	23.2	587.1	25.3	
2002	11	3.7	1.7	136.7	323.5	250.9	11.9	5.7	22.5	734.0	715.5	2,629	60,958	23.2	558.4	24.1	
2002	12	4.1	1.8	149.5	353.9	274.5	13.0	6.2	24.6	827.5	803.0	2,635	61,129	23.2	609.5	26.3	
2003	1	4.0	1.8	148.2	350.8	272.1	12.9	6.2	24.4	820.4	796.0	2,634	61,080	23.2	604.4	26.1	
2003	2	3.3	1.5	122.4	289.8	224.7	10.6	5.1	20.1	677.6	657.4	2,642	61,413	23.2	497.7	21.4	
2003	3	3.6	1.6	132.4	313.3	243.0	11.5	5.5	21.8	732.5	710.8	2,633	60,831	23.1	539.9	23.4	
2003	4	3.7	1.6	135.4	320.4	248.5	11.8	5.6	22.3	749.3	727.1	2,641	60,830	23.0	550.6	23.9	
2003	5	3.8	1.7	141.0	333.7	258.8	12.3	5.9	23.2	780.4	757.2	2,649	61,285	23.1	571.7	24.7	
2003	6	3.9	1.7	143.5	339.7	263.4	12.5	6.0	23.6	794.3	770.7	2,659	61,575	23.2	579.7	25.0	
2003	7	4.2	1.9	153.3	362.8	281.3	13.3	6.4	25.2	848.2	823.0	2,662	61,413	23.1	618.4	26.8	
2003	8	3.7	1.7	137.2	324.8	251.9	11.9	5.7	22.6	759.4	736.8	2,668	61,585	23.1	552.3	23.9	
2003	9	4.0	1.8	149.1	352.9	273.7	13.0	6.2	24.5	825.1	800.6	2,680	61,748	23.0	597.5	25.9	
2003	10	4.3	1.9	157.3	372.4	288.8	13.7	6.5	25.9	870.7	844.9	2,684	61,722	23.0	629.6	27.4	
2003	11	3.8	1.7	139.0	329.0	255.2	12.1	5.8	22.8	769.3	746.5	2,682	61,736	23.0	556.7	24.2	
2003	12	4.4	2.0	163.4	386.8	300.0	14.2	6.8	26.9	904.6	877.7	2,690	61,979	23.0	652.6	28.3	
2003 Total:		46.7	21.0	1722.2	4076.3	3161.4	149.6	71.5	283.1	9531.7	9248.7			<b>2003 Avg:</b>	<b>579.2</b>	<b>25.1</b>	
2002 Total:		43.0	19.3	1585.4	3752.5	2910.3	137.7	65.8	260.6	8774.7	8514.1			2002 Avg:	560.1	24.2	
2001 Total:		42.0	18.8	1,547.4	3,662.6	2,840.5	134.4	64.2	254.3	8,564.4	8,310.1			2001 Avg: <sup>1</sup>	464.8	23.5	
2000 Total:		31.2	12.8	1,159.4	2,699.9	2,137.8	92.3	50.6	172.7	6,356.7	6,184.0			2000 Avg:	662.3	27.4	
1999 Total:		2.1	NA	220.1	566.1	554.7	0.8	12.4	NA	1,356.2	1,356.2			1999 Avg:	515.4	20.0	
1998 Total:		2.0	NA	208.7	512.6	526.4	0.8	12.4	NA	1,262.8	1,262.8			1998 Avg:	492.3	19.2	
1997 Total:		2.7	NA	226.0	479.8	539.2	1.0	14.2	NA	1,263.0	1,263.0			1997 Avg:	517.3	20.1	
1996 Total:		2.5	NA	194.5	433.5	510.1	0.9	13.0	NA	1,154.4	1,154.4			1996 Avg:	506.9	19.1	
1995 Total:		2.4	NA	164.2	386.7	464.5	0.9	12.4	NA	1,031.1	1,031.1			1995 Avg:	490.7	17.7	
1994 Total:		2.9	NA	164.0	266.8	468.6	0.8	12.1	NA	915.2	915.2			1994 Avg:	477.0	16.9	
1993 Total:		6.9	NA	45.4	33.4	369.2	0.3	1.6	NA	456.9	456.9			1993 Avg:	318.9	10.2	
1992 Total:		3.3	NA	2.8	2.3	222.8	NA	NA	NA	231.3	231.3			1992 Avg:	330.5	9.8	
1991 Total:		0.9	NA	0.7	0.5	73.4	NA	NA	NA	75.6	75.6			1991 Avg:	345.1	7.6	

SOUTH END PERCENTAGE BREAKDOWN BY MATERIAL									
YEAR	ALUM	FERROUS METAL	GLASS	MIXED PAPER	NEWS-PAPER	PLASTIC (PET/HDPE)	TIN	CONTAM-INANTS	TOTAL w/cont
2003 Avg:	0.49%	0.22%	18.07%	42.77%	33.17%	1.57%	0.75%	2.97%	100%
2002 Avg:	0.49%	0.22%	18.07%	42.77%	33.17%	1.57%	0.75%	2.97%	100%
2001 Avg:	0.49%	0.22%	18.07%	42.77%	33.17%	1.57%	0.75%	2.97%	100%
2000 Avg:	0.49%	0.20%	18.24%	42.47%	33.63%	1.45%	0.80%	2.72%	100%
1999 Avg:	0.16%	NA	16.23%	41.74%	40.90%	0.06%	0.91%	NA	100%
1998 Avg:	0.16%	NA	16.52%	40.59%	41.68%	0.06%	0.99%	NA	100%
1997 Avg:	0.21%	NA	17.90%	37.99%	42.69%	0.08%	1.13%	NA	100%
1996 Avg:	0.22%	NA	16.85%	37.55%	44.19%	0.08%	1.12%	NA	100%
1995 Avg:	0.23%	NA	15.93%	37.50%	45.05%	0.08%	1.21%	NA	100%
1994 Avg:	0.31%	NA	17.92%	29.16%	51.20%	0.09%	1.33%	NA	100%
1993 Avg:	1.51%	NA	9.94%	7.32%	80.81%	0.07%	0.35%	NA	100%
1992 Avg:	1.44%	NA	1.22%	1.01%	96.33%	NA	NA	NA	100%
1991 Avg:	1.22%	NA	0.91%	0.69%	97.18%	NA	NA	NA	100%

**APARTMENT RECYCLING PROGRAM**

TOTAL CITY TONNAGE DATA											Sign-Up Data					
Yr	Mo	ALUM	FERROUS METAL	GLASS	MIXED PAPER	NEWS-PAPER	PLASTIC (PET/HDPE)	TIN	CONTAM-INANTS	TOTAL w/cont	TOTAL w/o cont	Bldgs	Units	Units/ Bldg	Lbs/ Bldg	Lbs/ Unit
2002	1	5.6	2.0	180.6	448.0	378.5	17.7	8.8	31.4	1,072.6	1,041.2	NA	NA	NA	NA	NA
2002	2	5.2	1.9	167.9	414.8	348.0	16.3	8.0	29.0	991.1	962.1	NA	NA	NA	NA	NA
2002	3	5.2	1.9	169.2	417.3	349.2	16.3	8.1	29.2	996.4	967.2	4,293	88,518	20.6	448.2	21.7
2002	4	5.8	2.1	189.0	467.2	392.4	18.3	9.1	32.7	1,116.6	1,084.0	4,293	88,518	20.6	450.6	21.9
2002	5	6.2	2.3	202.4	499.2	417.7	19.5	9.6	34.9	1,191.9	1,157.0	4,307	88,937	20.6	503.3	24.4
2002	6	5.8	2.2	190.8	470.6	394.0	18.4	9.1	32.9	1,123.8	1,090.9	4,329	89,197	20.6	534.5	25.9
2002	7	6.3	2.3	205.8	507.5	424.5	19.8	9.8	35.5	1,211.6	1,176.1	4,345	89,374	20.6	502.1	24.4
2002	8	6.2	2.3	202.2	499.2	418.5	19.5	9.7	34.9	1,192.4	1,157.5	4,368	89,986	20.6	538.5	26.1
2002	9	6.0	2.2	196.9	486.0	407.3	19.0	9.4	34.0	1,161.0	1,127.0	4,388	90,775	20.7	527.6	25.5
2002	10	6.4	2.4	209.4	516.4	432.1	20.2	10.0	36.1	1,232.9	1,196.8	4,422	91,611	20.7	509.7	24.6
2002	11	6.1	2.3	199.1	491.0	410.9	19.2	9.5	34.3	1,172.3	1,138.0	4,422	91,460	20.7	541.3	26.2
2002	12	6.7	2.5	217.8	537.3	449.7	21.0	10.4	37.6	1,283.0	1,245.4	4,430	91,654	20.7	513.8	24.8
2003	1	6.6	2.5	215.6	531.7	444.9	20.8	10.3	37.2	1,269.5	1,232.3	4,430	91,624	20.7	562.2	27.2
2003	2	5.4	2.0	178.1	439.2	367.4	17.2	8.5	30.7	1,048.5	1,017.8	4,441	91,981	20.7	555.0	26.8
2003	3	5.9	2.2	192.3	474.1	396.6	18.5	9.2	33.2	1,131.8	1,098.7	4,431	91,428	20.6	459.4	22.3
2003	4	6.1	2.3	199.9	493.7	414.0	19.3	9.6	34.5	1,179.5	1,145.0	4,443	91,511	20.6	494.6	24.0
2003	5	6.2	2.3	203.9	502.7	420.2	19.6	9.7	35.2	1,199.9	1,164.8	4,452	92,002	20.7	514.4	24.9
2003	6	6.4	2.4	208.1	513.2	429.2	20.1	9.9	35.9	1,225.1	1,189.2	4,461	92,353	20.7	522.2	25.2
2003	7	6.8	2.5	223.3	550.8	461.0	21.5	10.6	38.5	1,315.1	1,276.6	4,471	92,664	20.7	532.0	25.7
2003	8	6.1	2.3	199.5	492.0	411.7	19.2	9.5	34.4	1,174.7	1,140.3	4,486	92,970	20.7	569.2	27.5
2003	9	6.6	2.5	217.3	536.1	448.7	21.0	10.4	37.5	1,280.1	1,242.6	4,497	93,120	20.7	507.1	24.5
2003	10	7.0	2.6	229.9	567.1	474.8	22.2	11.0	39.7	1,354.3	1,314.6	4,513	93,390	20.7	550.7	26.6
2003	11	6.2	2.3	203.4	501.9	420.3	19.6	9.7	35.1	1,198.7	1,163.6	4,512	93,452	20.7	582.7	28.1
2003	12	7.3	2.7	238.3	587.8	492.0	23.0	11.4	41.1	1,403.6	1,362.5	4,522	93,736	20.7	514.6	24.8
2003 Total:		76.8	28.6	2,509.7	6,190.4	5,180.8	242.0	119.6	432.9	14,780.8	14,347.9			<b>2003 Avg:</b>	<b>518.7</b>	<b>26.6</b>
2002 Total:		71.5	26.6	2,331.1	5,754.6	4,822.7	225.3	111.4	402.5	13,745.6	13,343.1			2002 Avg:	515.4	25.0
2001 Total:		70.0	26.0	2,282.6	5,636.3	4,725.9	220.7	109.2	394.2	13,465.0	13,070.8			2001 Avg: <sup>1</sup>	502.5	26.8
2000 Total:		65.0	17.8	2,050.6	5,269.2	4,004.9	179.9	103.5	292.2	11,983.2	11,691.0			2000 Avg: <sup>3</sup>	497.0	25.0
1999 Total:		68.6	NA	1,908.6	5,647.9	2,763.6	87.3	66.4	111.9	10,654.3	10,542.4			1999 Avg:	654.7	27.6
1998 Total:		70.2	NA	1,835.2	5,020.4	2,978.4	99.6	106.1	129.0	10,238.8	10,109.8			1998 Avg:	669.2	28.1
1997 Total:		68.9	NA	1,646.4	4,686.3	2,521.9	87.3	114.5	89.5	9,214.8	9,125.3			1997 Avg:	639.2	26.8
1996 Total:		69.9	NA	1,527.3	3,296.6	3,041.2	78.7	113.3	61.8	8,188.7	8,126.9			1996 Avg:	605.3	24.8
1995 Total:		49.6	NA	1,458.3	2,555.7	2,995.5	13.5	120.0	NA	7,192.4	7,192.4			1995 Avg:	608.2	22.9
1994 Total:		51.3	NA	1,224.6	3,013.2	1,678.1	0.8	111.0	NA	6,079.0	6,079.0			1994 Avg:	657.8	23.6
1993 Total:		47.0	NA	769.5	2,517.4	435.6	0.3	85.9	NA	3,855.7	3,855.7			1993 Avg:	646.0	20.2
1992 Total:		3.3	NA	736.2	1,438.5	726.7	NA	68.7	NA	2,973.4	2,973.4			1992 Avg:	753.3	24.4
1991 Total:		0.9	NA	410.6	661.7	732.7	NA	23.6	NA	1,829.5	1,829.5			1991 Avg:	733.5	23.4
1990 Total:		NA	NA	228.7	500.8	358.4	NA	6.3	NA	1,094.2	1,094.2			1990 Avg:	712.1	22.8
1989 Total:		NA	NA	69.9	42.7	192.8	NA	NA	NA	305.4	305.4			1989 Avg:	NA	NA

TOTAL CITY PERCENTAGE BREAKDOWN BY MATERIAL									
YEAR	ALUM	FERROUS METAL	GLASS	MIXED PAPER	NEWS-PAPER	PLASTIC (PET/HDPE)	TIN	CONTAM-INANTS	TOTAL w/cont
2003 Avg:	0.52%	0.19%	16.98%	41.88%	35.05%	1.64%	0.81%	2.93%	100%
2002 Avg:	0.52%	0.19%	16.96%	41.86%	35.09%	1.64%	0.81%	2.93%	100%
2001 Avg:	0.52%	0.19%	16.95%	41.86%	35.10%	1.64%	0.81%	2.93%	100%
2000 Avg:	0.54%	0.15%	17.11%	43.97%	33.42%	1.50%	0.86%	2.44%	100%
1999 Avg:	0.64%	NA	17.91%	53.01%	25.94%	0.82%	0.62%	1.05%	100%
1998 Avg:	0.69%	NA	17.92%	49.03%	29.09%	0.97%	1.04%	1.26%	100%
1997 Avg:	0.75%	NA	17.87%	50.86%	27.37%	0.95%	1.24%	0.97%	100%
1996 Avg:	0.85%	NA	18.65%	40.26%	37.14%	0.96%	1.38%	0.75%	100%
1995 Avg:	0.69%	NA	20.27%	35.53%	41.65%	0.19%	1.67%	NA	100%
1994 Avg:	0.84%	NA	20.14%	49.57%	27.61%	0.01%	1.83%	NA	100%
1993 Avg:	1.22%	NA	19.96%	65.29%	11.30%	0.01%	2.23%	NA	100%
1992 Avg:	NA	NA	24.76%	48.38%	24.44%	NA	2.31%	NA	100%
1991 Avg:	NA	NA	22.44%	36.17%	40.05%	NA	1.29%	NA	100%
1990 Avg:	NA	NA	20.90%	45.77%	32.76%	NA	0.58%	NA	100%
1989 Avg:	NA	NA	22.90%	13.97%	63.13%	NA	0.00%	NA	100%

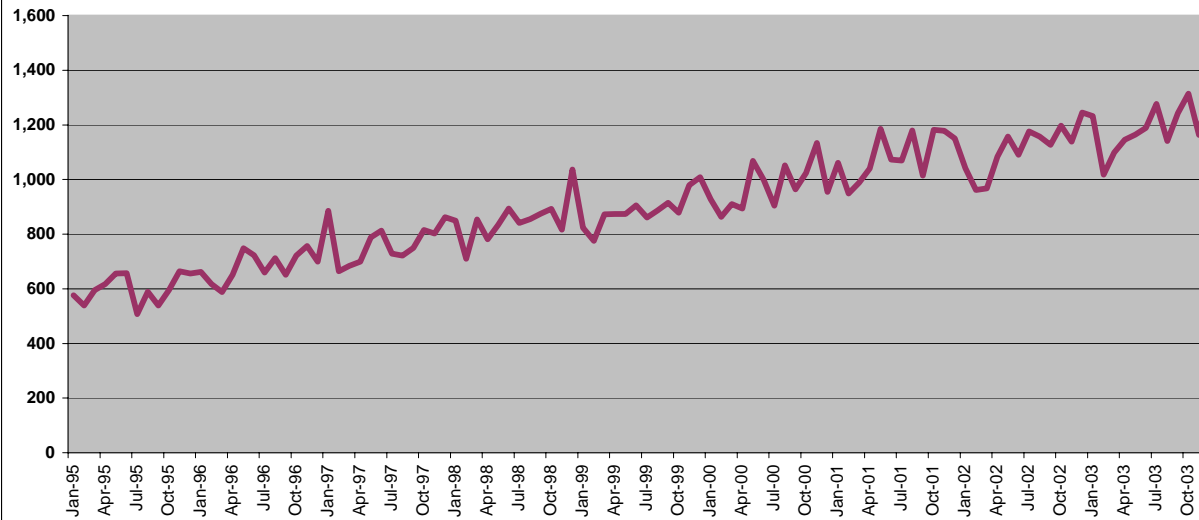
<sup>1</sup> New billing system took effect April 2001. New subscription information not available until March 2002

<sup>2</sup> New materials (polycoated paper, aseptic packaging and additional plastics) added to program effective April 2000.

<sup>3</sup> Subscription data inaccurate due to transfer of accounts during change in contractors Jan 2000

## APARTMENT RECYCLING

**Monthly Tons Collected**  
(not including contamination<sup>1</sup>)

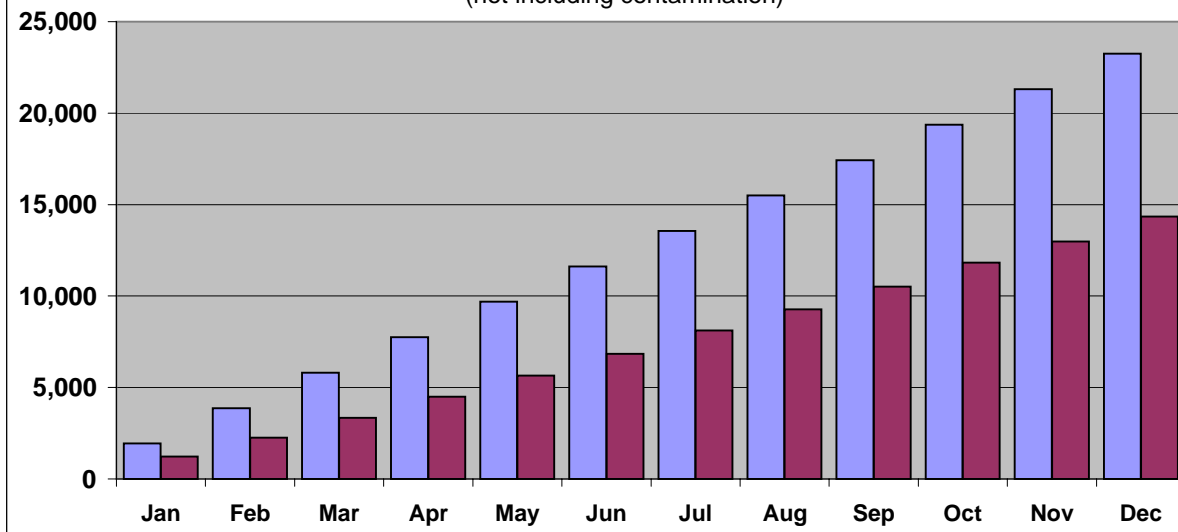


(1) Contamination rate established through composition study performed 2000-2001 applied to tons collected since April 2000. Prior to that, contamination data is incomplete.

## APARTMENT RECYCLING

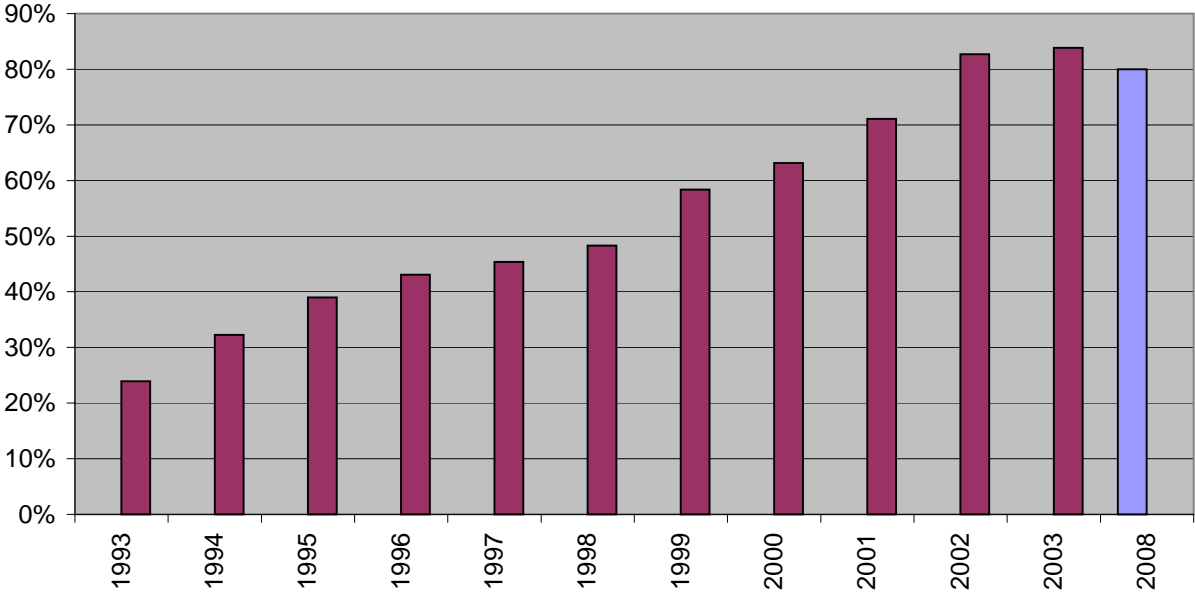
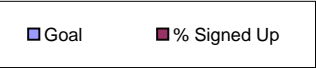
**Cumulative Tons Collected 2003**  
(not including contamination)

■ 2008 Goal ■ 2003 Actual



# APARTMENT RECYCLING

## Accounts Signed-up<sup>1</sup>



<sup>1</sup> As of 2002 chart shows % of units signed up. Before 2002, chart shows % of buildings signed up