

# Business Recycling & Composting Requirements

The City of Seattle prohibits businesses from disposing of recyclables and compostables in the garbage.

 **NOT ALLOWED IN GARBAGE** 

## Paper



## Cardboard



## Food



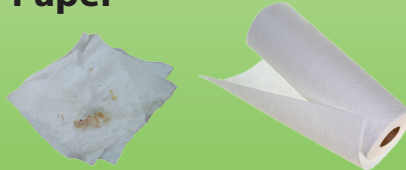
## Cups



## Cans



## Paper



## Jars



## Bottles



## Yard Waste



**COMMERCIAL RECYCLING REQUIREMENTS  
EFFECTIVE JULY 2014**

**COMMERCIAL COMPOSTING REQUIREMENTS  
EFFECTIVE JANUARY 2015**

## SMC 21.36.082

The presence of significant amounts of recyclables and/or compostables in commercial garbage is a **\$50 fine**.

Take steps to reduce waste and improve your recycling program.

For more information and to request free resources to improve your recycling program, contact Seattle Public Utilities' Green Business Program.

[GreenBusiness@Seattle.Gov](mailto:GreenBusiness@Seattle.Gov) | 206-343-8505  
[www.seattle.gov/util/greenyourbusiness](http://www.seattle.gov/util/greenyourbusiness)



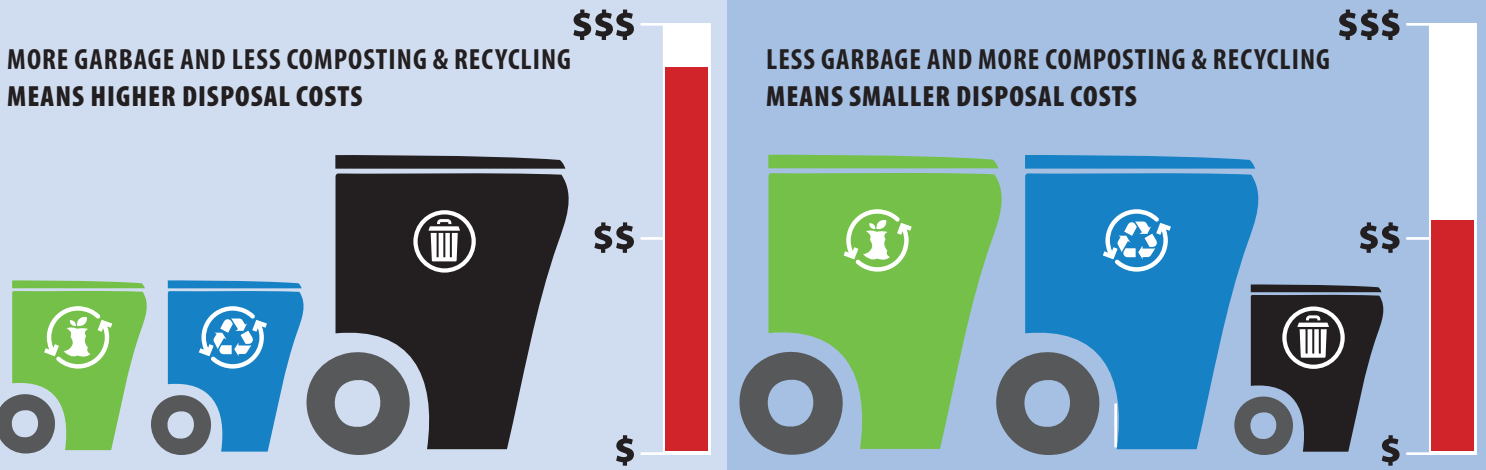
# Recycling & Composting Tips



- **Prevent Garbage:** Avoid using disposable items. Instead use reusable, recyclable and compostable items.
- **Compost & Recycle:** These two services are 30-50% cheaper than garbage service.



I throw out the same amount of material. I just put it in different bins and save money. #SeattleGreenBiz



## Recycling Tips

### Workplace Recycling

- Clearly label collection bins. Use signs that show where items specific to your workplace go.
- Place all three collections bins (recycle, compost, and garbage) together in a central location.
- Place bins in the kitchen where they will be used, such as near prep stations and dishwashing stations.
- Use durable items to serve food.

- Ask suppliers about available recyclable or compostable products and products that have less packaging.
- Contact your collection service provider to learn which items can be recycled or composted.
- Teach staff how to sort the specific items used in your kitchen.

### Collection Service

- Reduce your garbage service. Don't pay for empty space.
- Lock dumpsters or carts in high traffic areas to prevent illegal dumping.
- Recycling more can save you money. Contact a service provider to order service.
- Contact the service providers below for collection service.

## Collection Service Providers



RECOLOGY CLEANSCAPES  
GARBAGE | RECYCLING | COMPOSTING  
(206) 250-7500  
info@recologycleanscapes.com



WASTE MANAGEMENT  
GARBAGE | RECYCLING | COMPOSTING  
(800) 592-9995  
recyclenw@wm.com



REPUBLIC SERVICES  
RECYCLING  
(206) 332-7705  
infoseattle@republicservices.com



CEDAR GROVE  
RECYCLING | COMPOSTING  
(877) 994-4466  
help@cgcompost.com



SEADRUNAR  
RECYCLING  
(206) 467-7550  
info@seadrunarrecycling.com