

Ballard Site Master Plan

Kelsey Whittaker

Ship Canal Water Quality Project
Project Manager

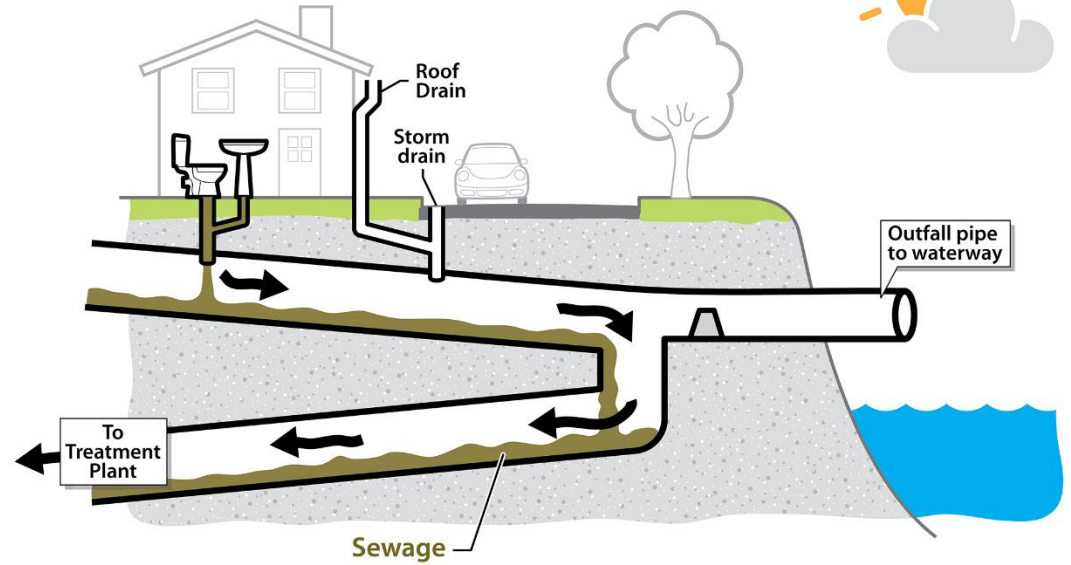
April 18, 2018



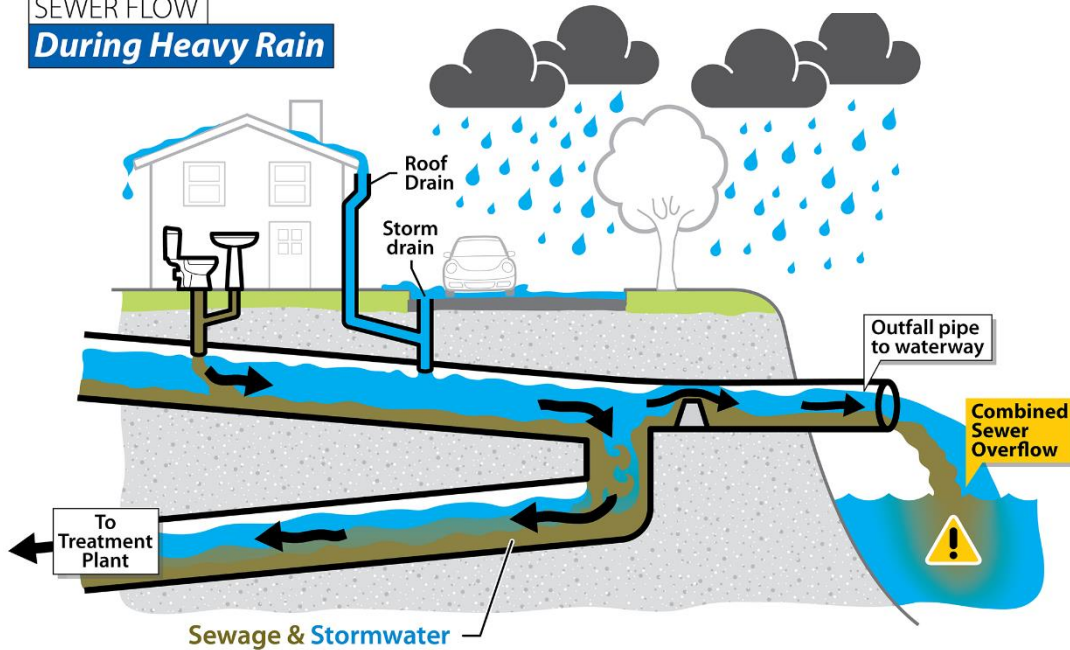
**Seattle
Public
Utilities**

Combined Sewer Overflows

SEWER FLOW
During Dry Weather



SEWER FLOW
During Heavy Rain



Ship Canal Water Quality Project

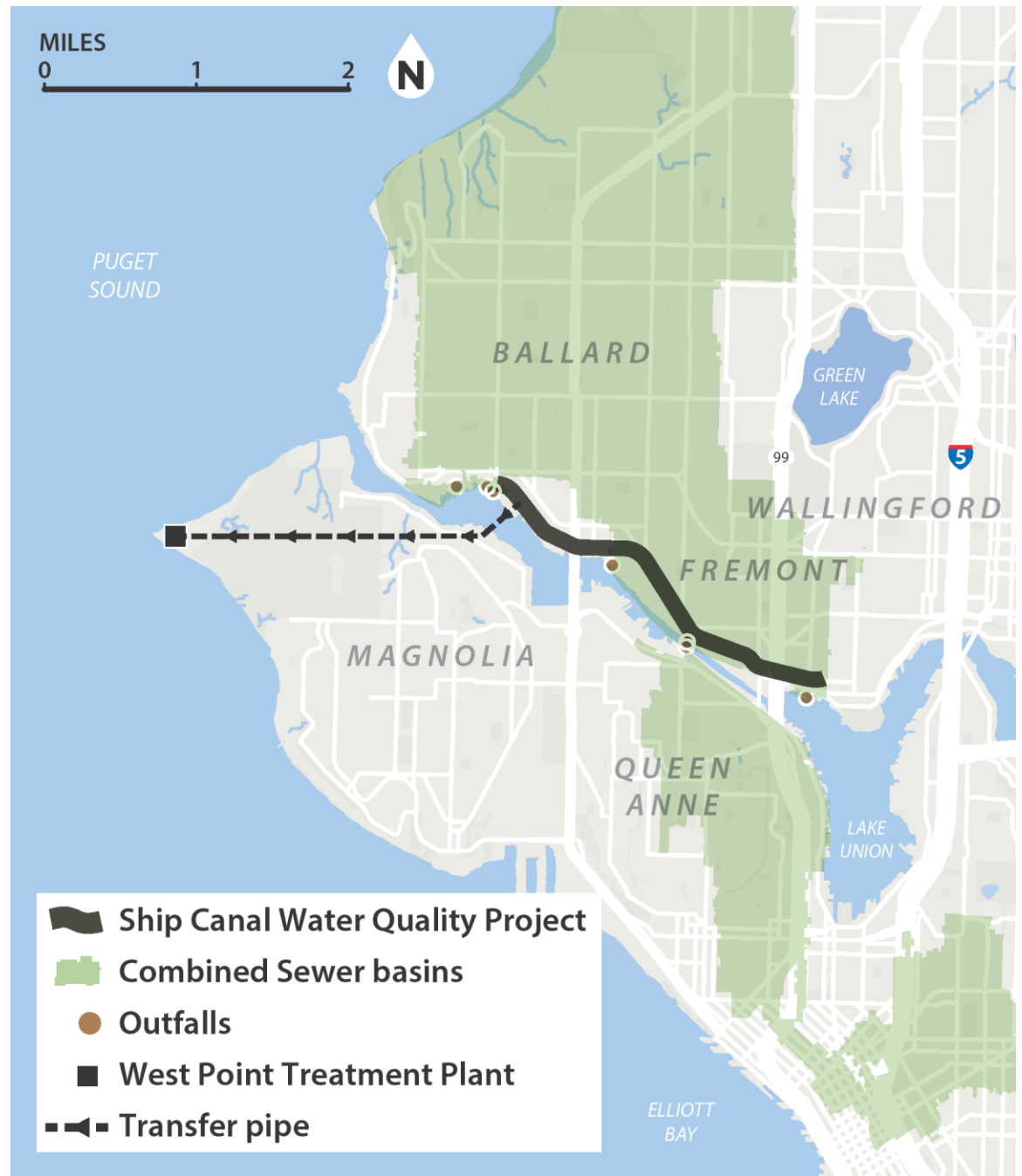
Keeps over 60 million gallons of combined sewage overflow out of the Ship Canal, Salmon Bay, and Lake Union each year



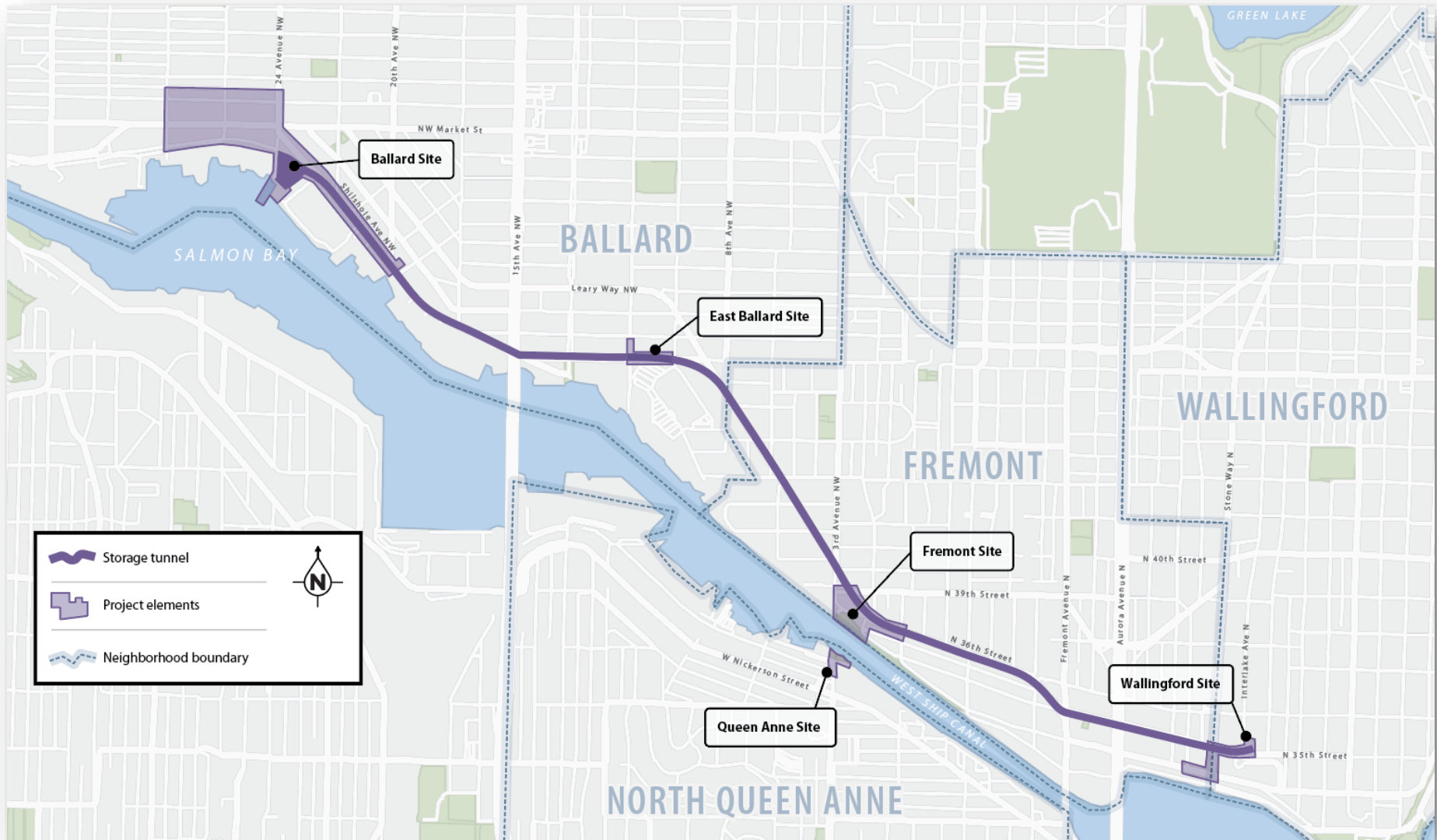
Seattle
Public
Utilities



King County



Project Locations



Ballard Site

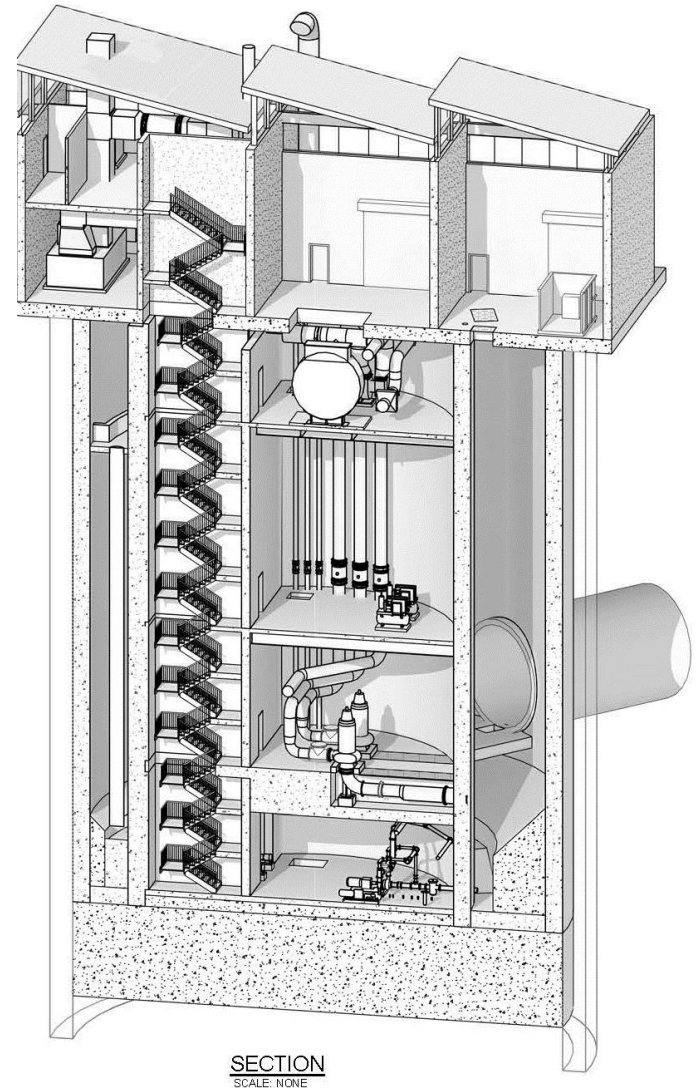




What shared uses are possible at the Ballard site?

Pump Station

- Dewatering pumps
- Solid pumps
- Odor control
- Standby generator
- Operation and maintenance
- Site access and security
- Vehicle circulation
- Stormwater drainage



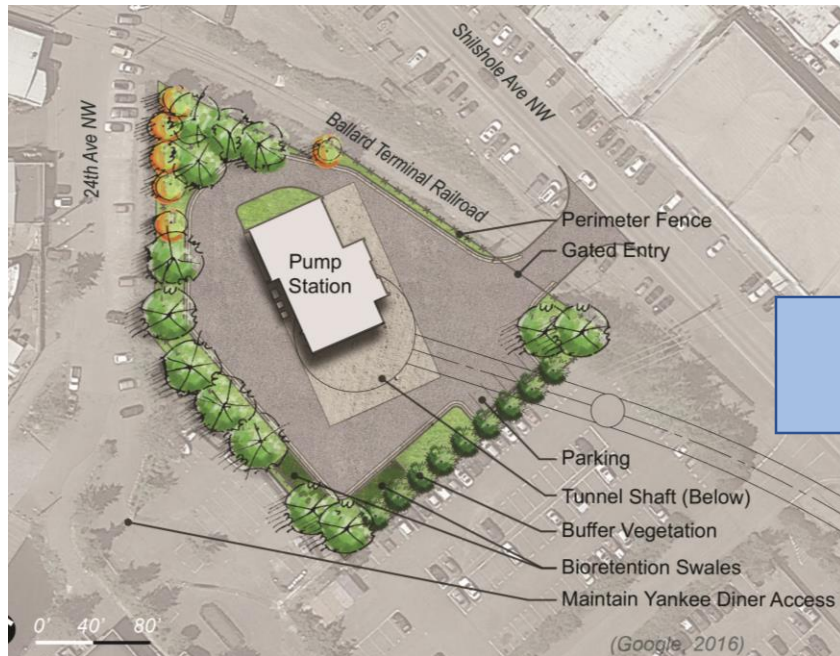
SECTION
SCALE: NONE

Early version of the SCWQP pump station

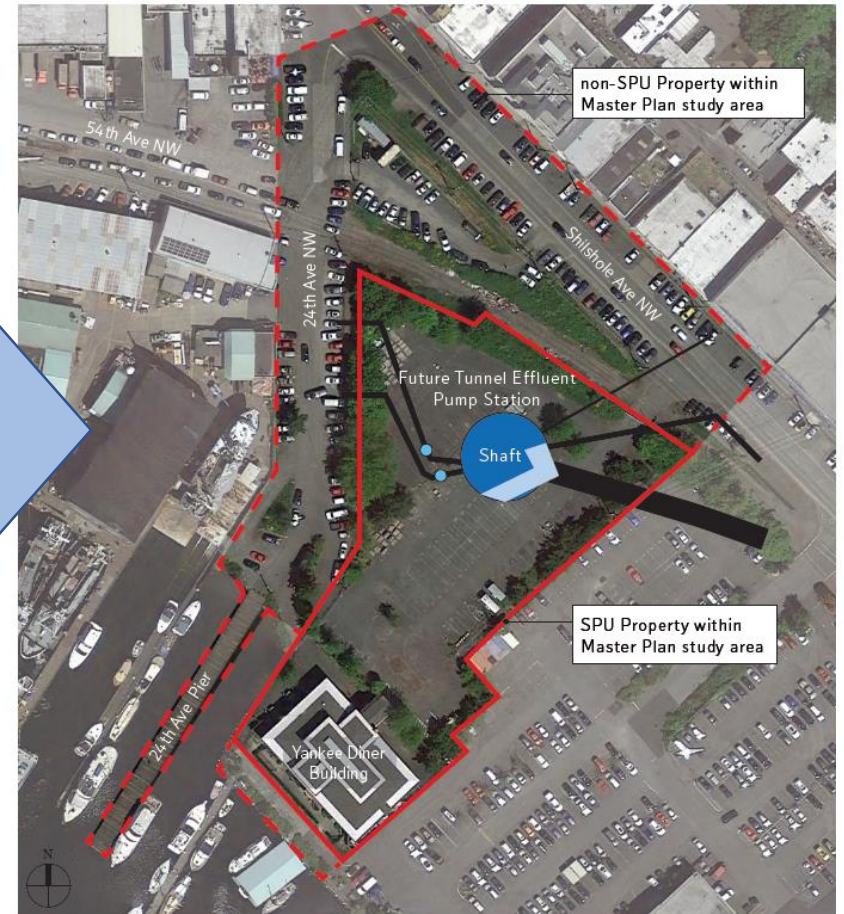
Pump Station physical model



Design Approach



Tunnel Effluent Pump Station (TEPS) Constraints



Design Approach

- Gathering space
- Urban respite
- Waterfront
- Research
- Outreach



1894 – Salmon Bay



GGN, Site Analysis Memorandum, 2018

1905 – 24th Avenue Pier



GGN, Site Analysis Memorandum, 2018

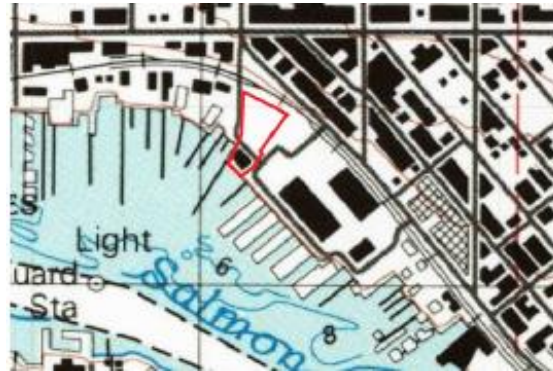
1908 – Ship Canal Construction



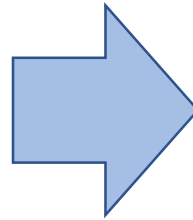
1908 – 1940: Industrial Waterfront



1940 – now: Modern Waterfront



Public engagement



Tunnel Effluent Pump Station (TEPS) Constraints



GGN Ship Canal Water Quality Project - Ballard Site Master Plan

Advisory group focused on building finishes and landscape

Limited scope = limited public engagement

Focus of advisory group to be determined

Increased scope = increased public engagement

Advisory Group Interests

- Coordination with other city projects (SDOT Burke-Gilman Missing Link)
- Industrial maritime uses
- Amenities: parking, open space, & restrooms
- Improved access to business district
- Environmental education

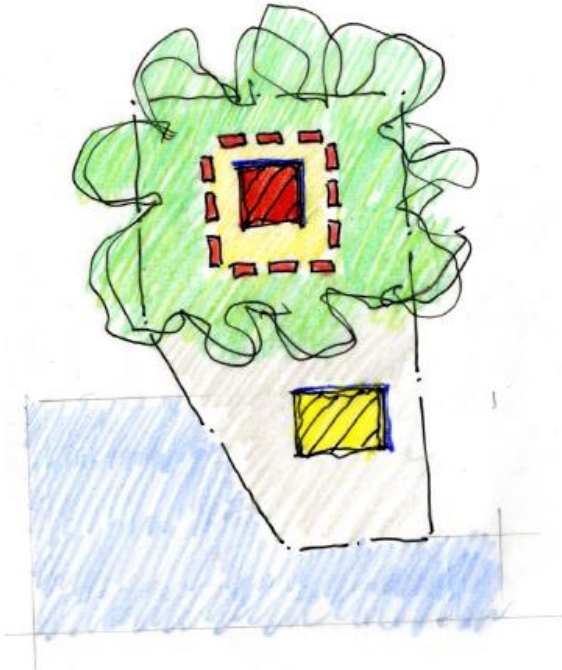
What strategies would you suggest to engage the community going forward?

SPU Design goals

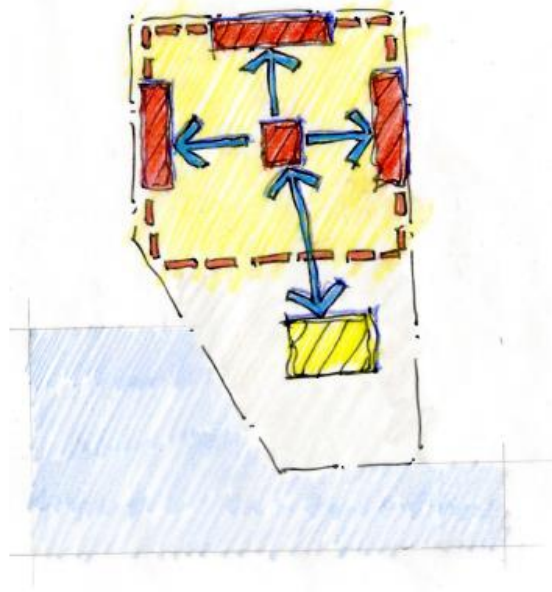
- Demonstrate SPU and the Drainage and Wastewater Mission
- Have a safe and secure site
- Have SPU staff on site
- Be financially sound



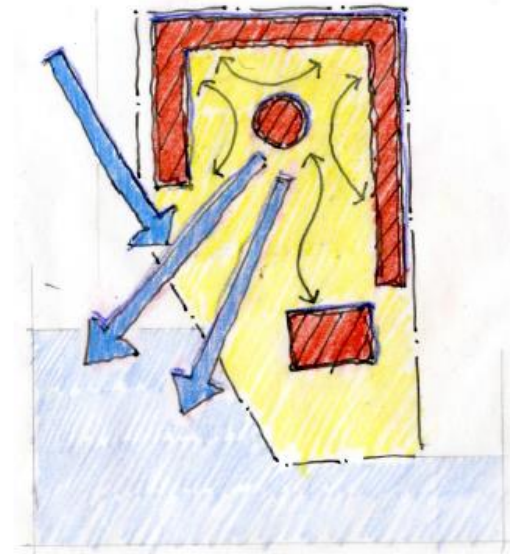
Site strategies



- Previous Design TEPS 30%
- TEPS program - secured and heavily planted

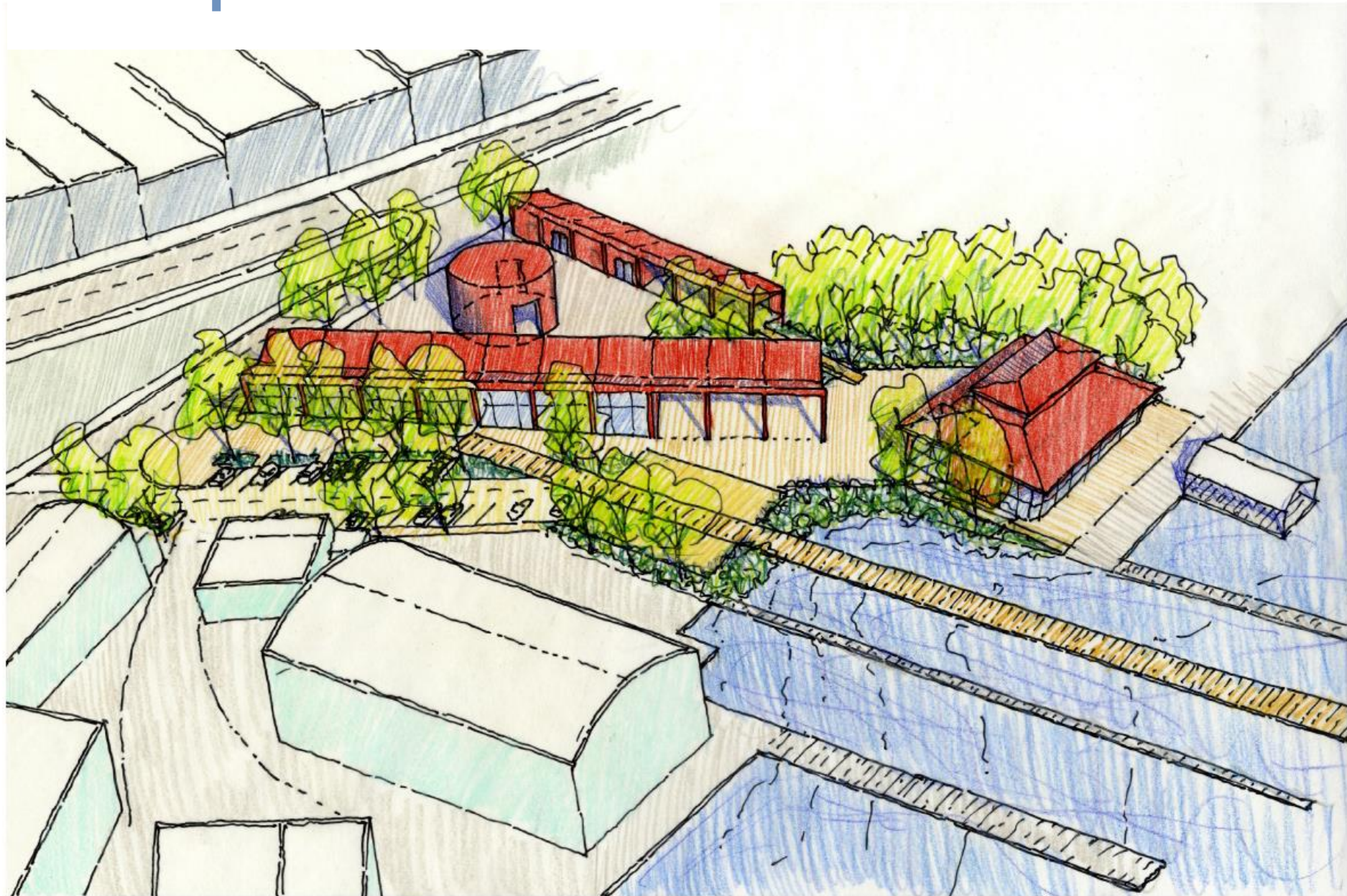


- Connecting TEPS and Yankee Diner
- Engaging site edges

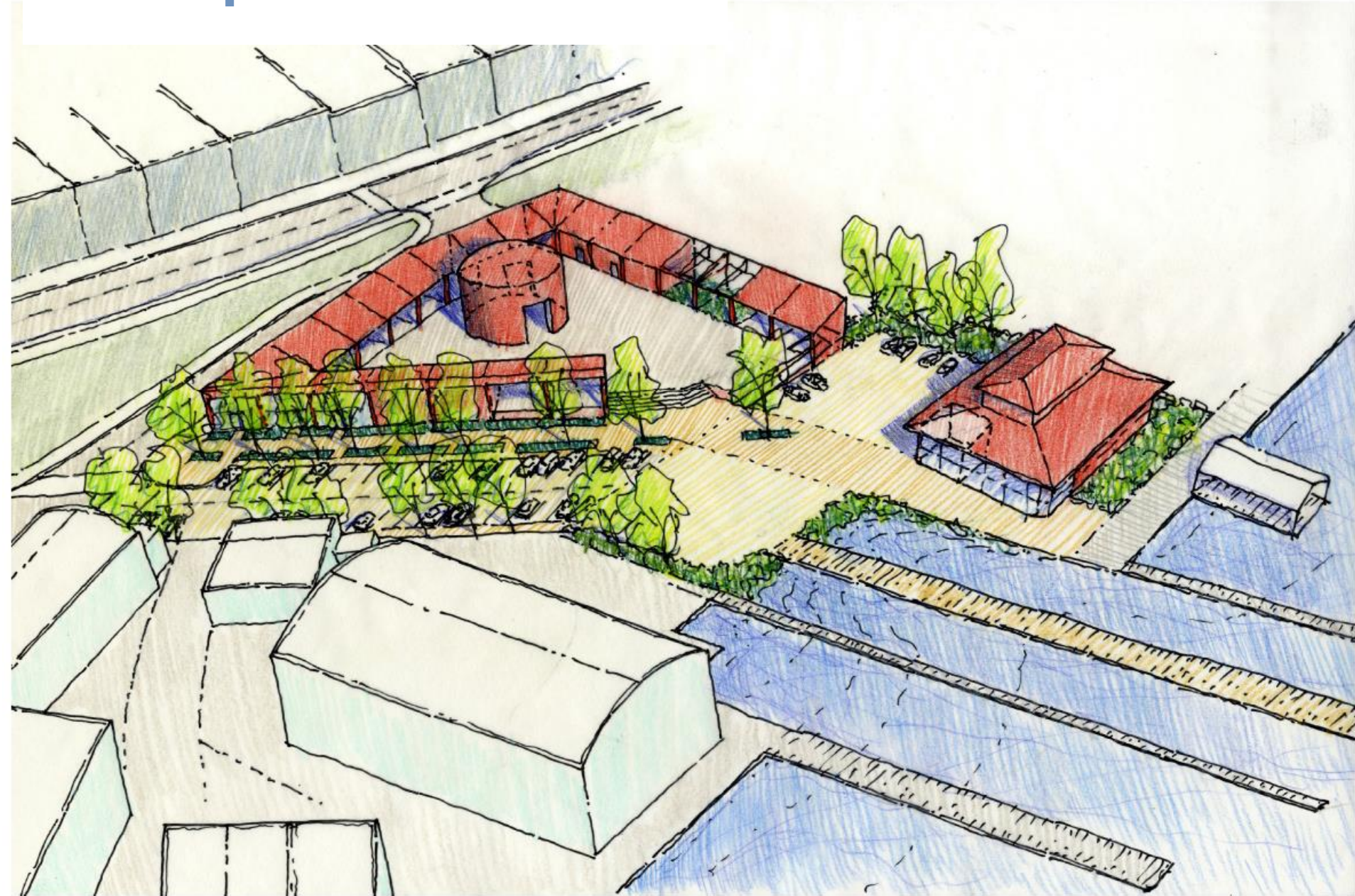


- Using building as secure perimeter
- occupying entire site
- Maximizing views from Market Street and to water

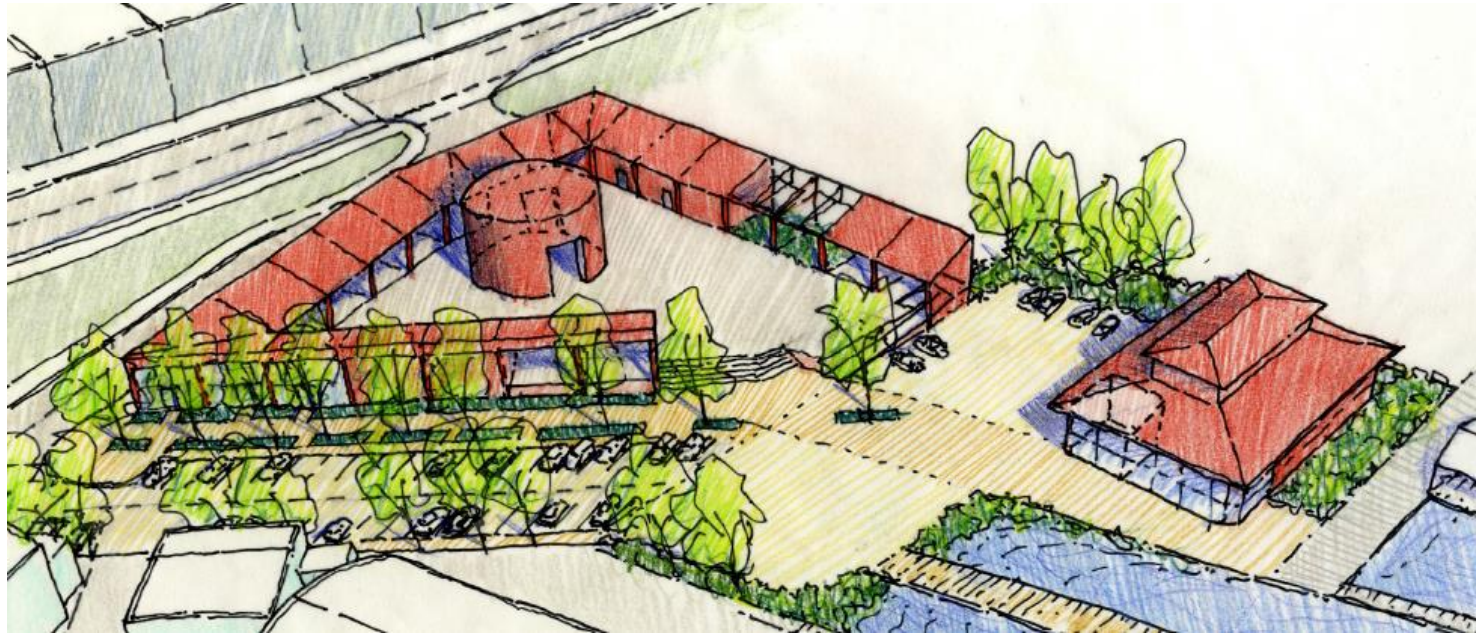
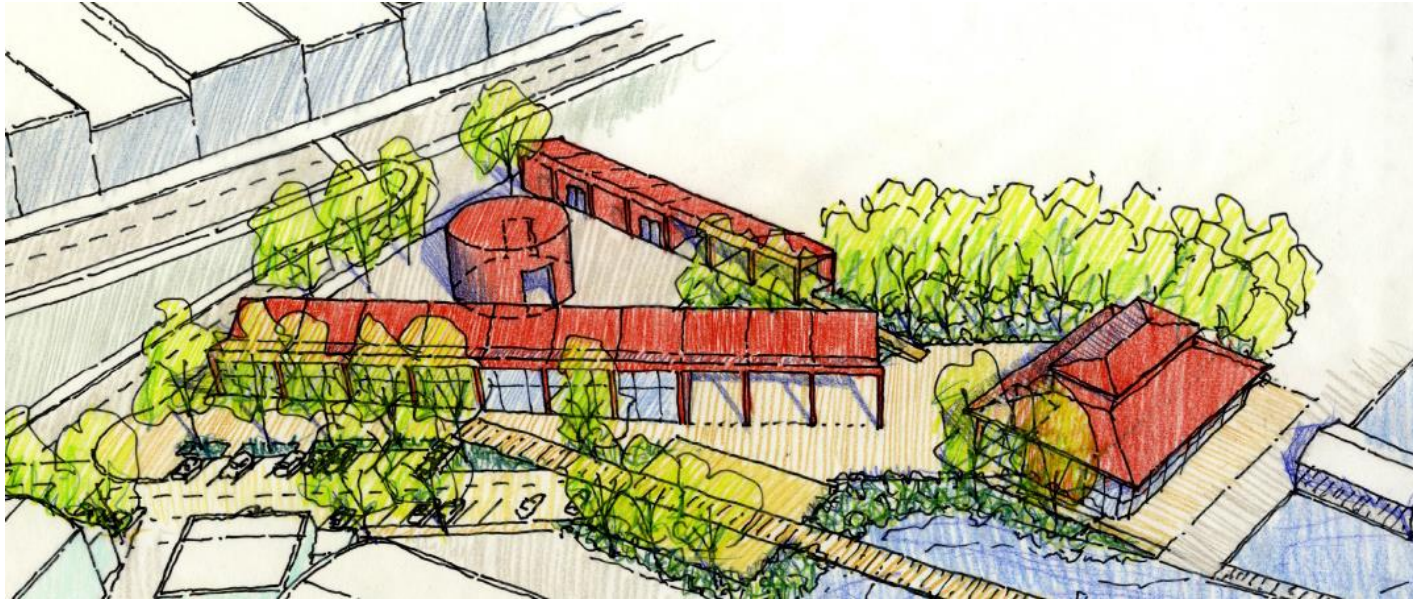
Concept 1



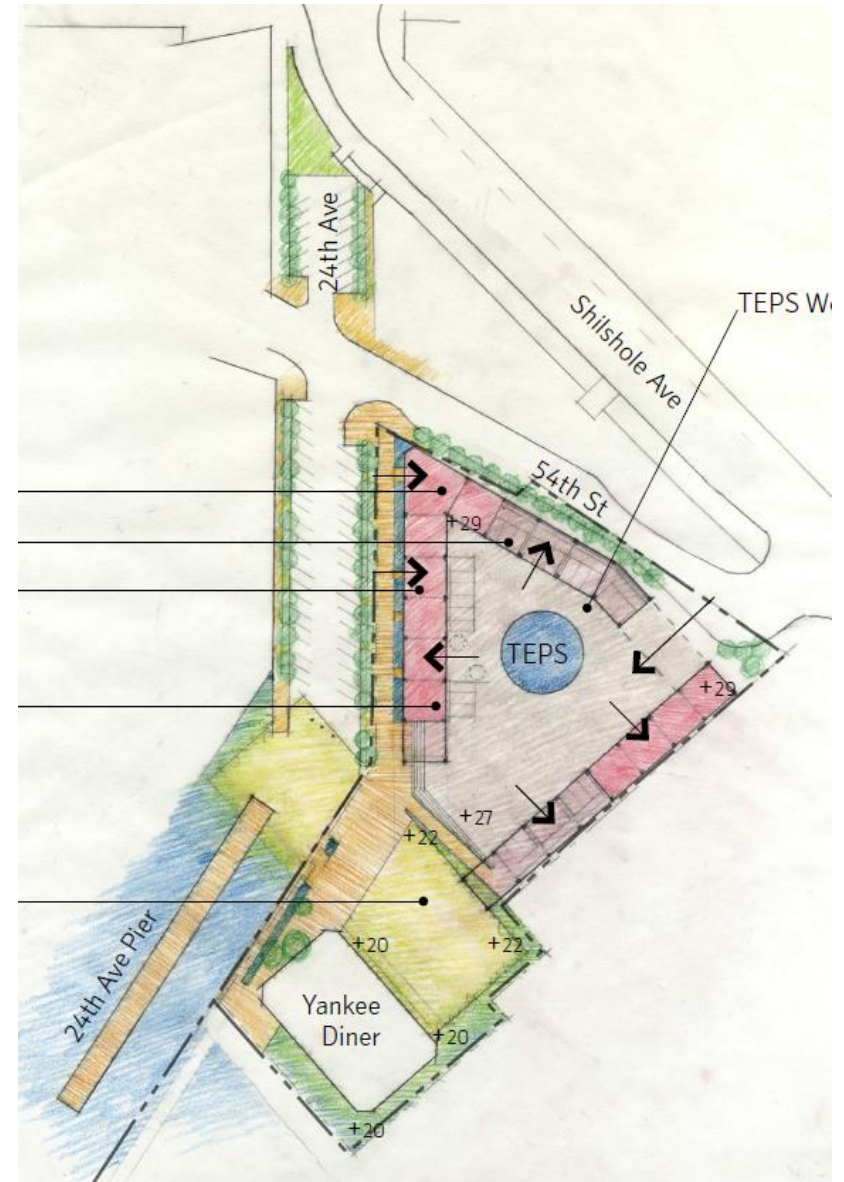
Concept 2



Side by side



Side by side



What shared uses are possible at the Ballard site?

Next steps

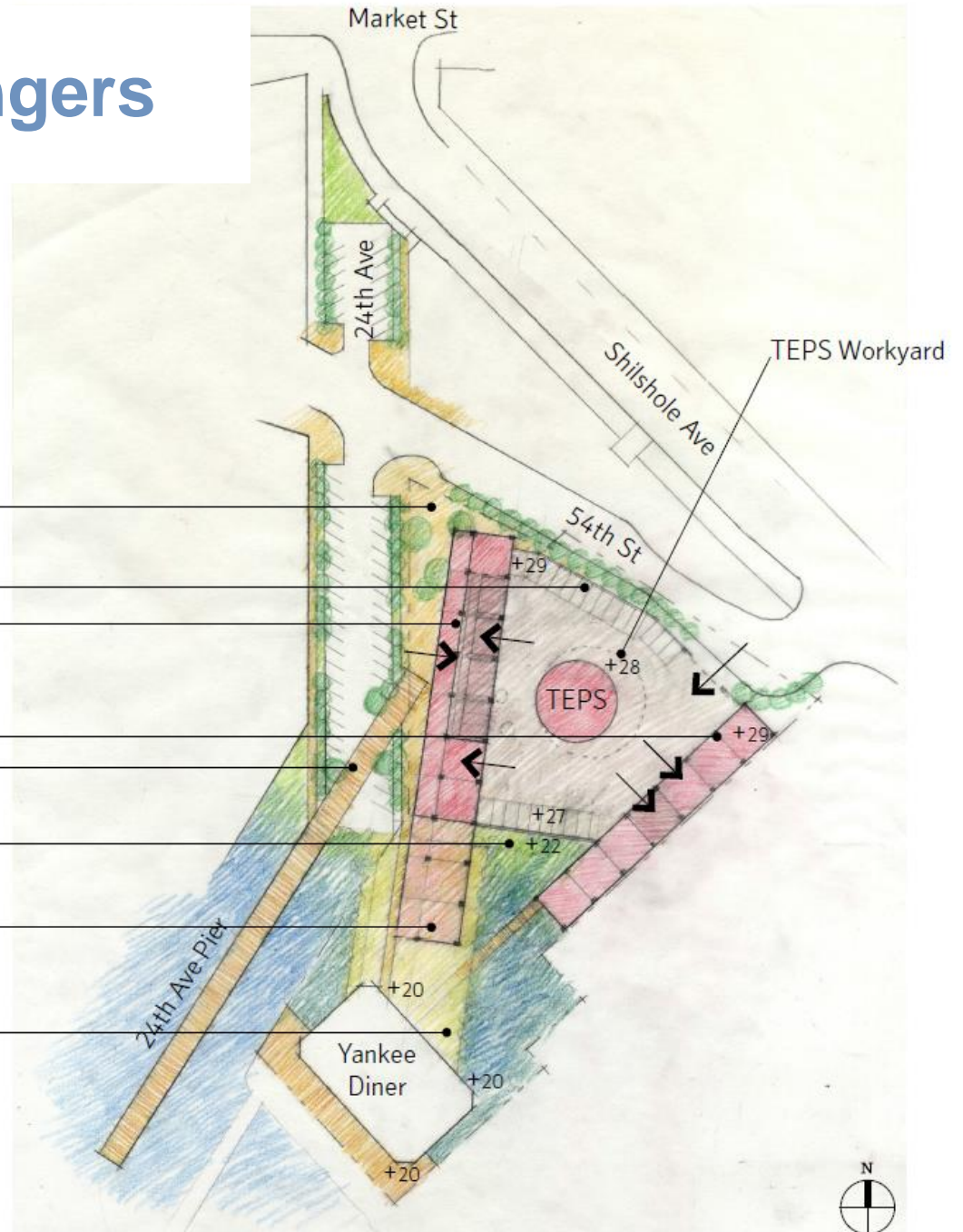
- Reconnect with pump station advisory group
- Interdepartmental meetings/interests
- Neighborhood meetings? Workshops, charrettes?

Questions?

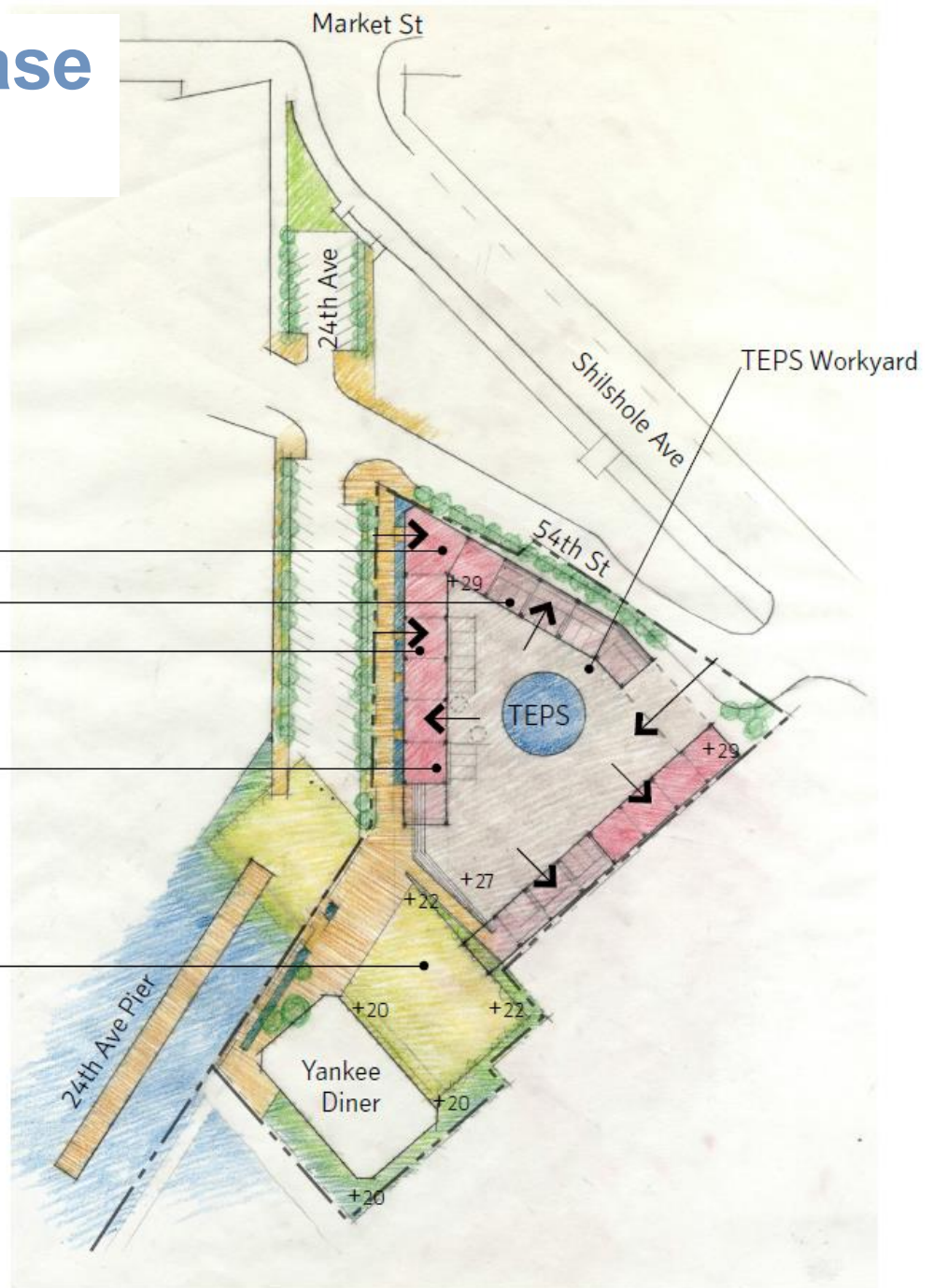
Kelsey.Whittaker@seattle.gov

Concept 1: Pier Fingers

- Public space for visibility and access from Market St
- SPU and TEPS parking
- Commercial/start-up open to 24th Ave
- TEPS facility
- 24th Ave Pier extends and connects to site
- Green Stormwater Infrastructure
- Covered flex and shared yard space that can be used as parking, events yard
- Open flex and shared yard space that can be used as parking or events yard



Concept 2: Showcase wastewater



Warehouse bays - housing TEPS and other programs - embrace the TEPS shaft. Openness between bays create comradery and sharedness

SPU and TEPS parking

Green Stormwater Infrastructure

These bays are roofed, yet open, allowing views to the shipyard and water

Open space near public pier for SPU functions and public use. Expands public waterfront access