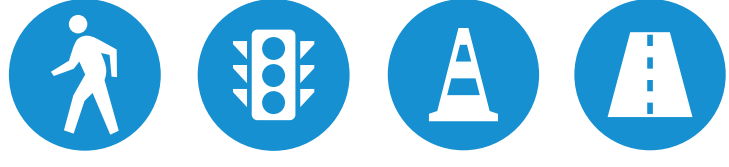




## Route 44



# Phinney Segment, N 46th St at Greenwood Ave N to Fremont Ave N

### Concept benefits:

This concept will adjust the channelization on N 46th St and modify allowable turns to streamline the travel of buses and through traffic.

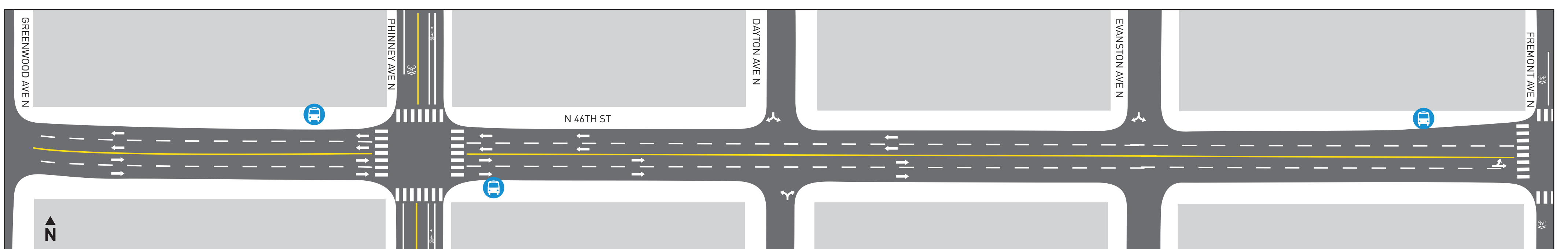
### This concept will:

- Remove a westbound travel lane
- Add a westbound left-turn pocket at Phinney Ave N
- Add a two-way left-turn lane between Phinney Ave N and Fremont Ave N
- Remove eastbound left turns at Fremont Ave N

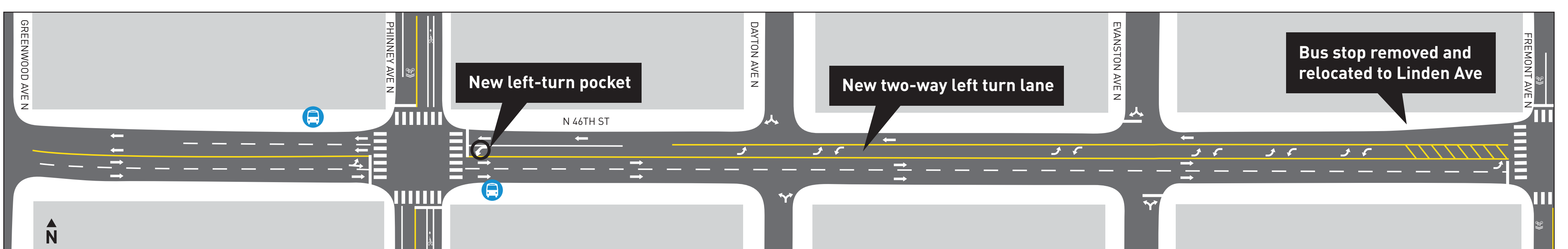
### Concept update:

- Eastbound left turns will be retained at Fremont Ave N.
- Westbound bus stop at Fremont Ave will be relocated adjacent to new signal at Linden Ave N

## Before



## After



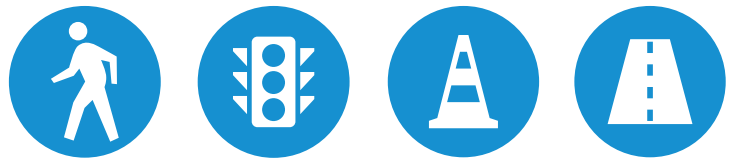
Seattle Department of Transportation



King County METRO



## Route 44



# Phinney Segment, N 46th St at Aurora Ave N

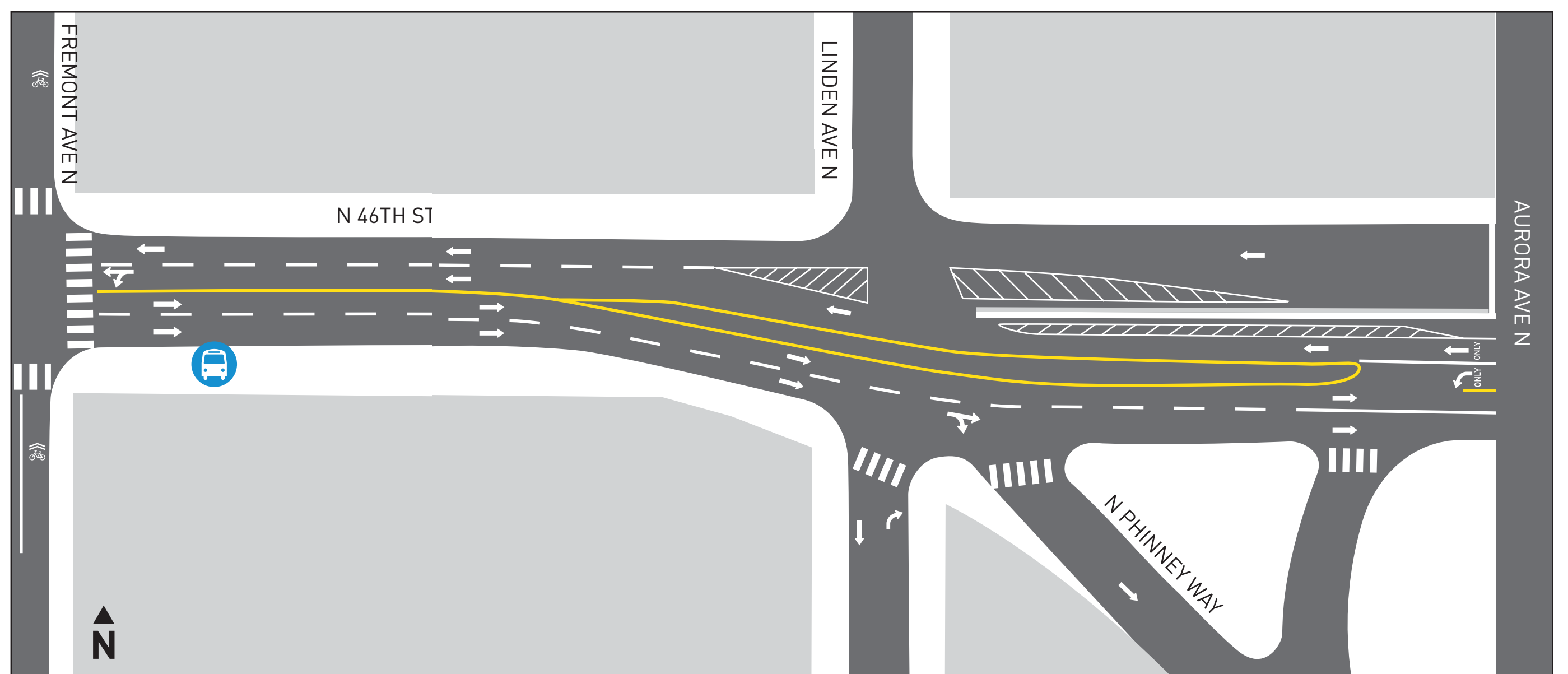
### Concept benefits:

This concept will adjust the channelization on N 46th St, modify allowable turns, improve the access to Aurora Ave N, relocate a bus stop, and restrict access to Linden Ave N. These changes will improve safety, increase pedestrian access, and streamline travel for buses and through traffic.

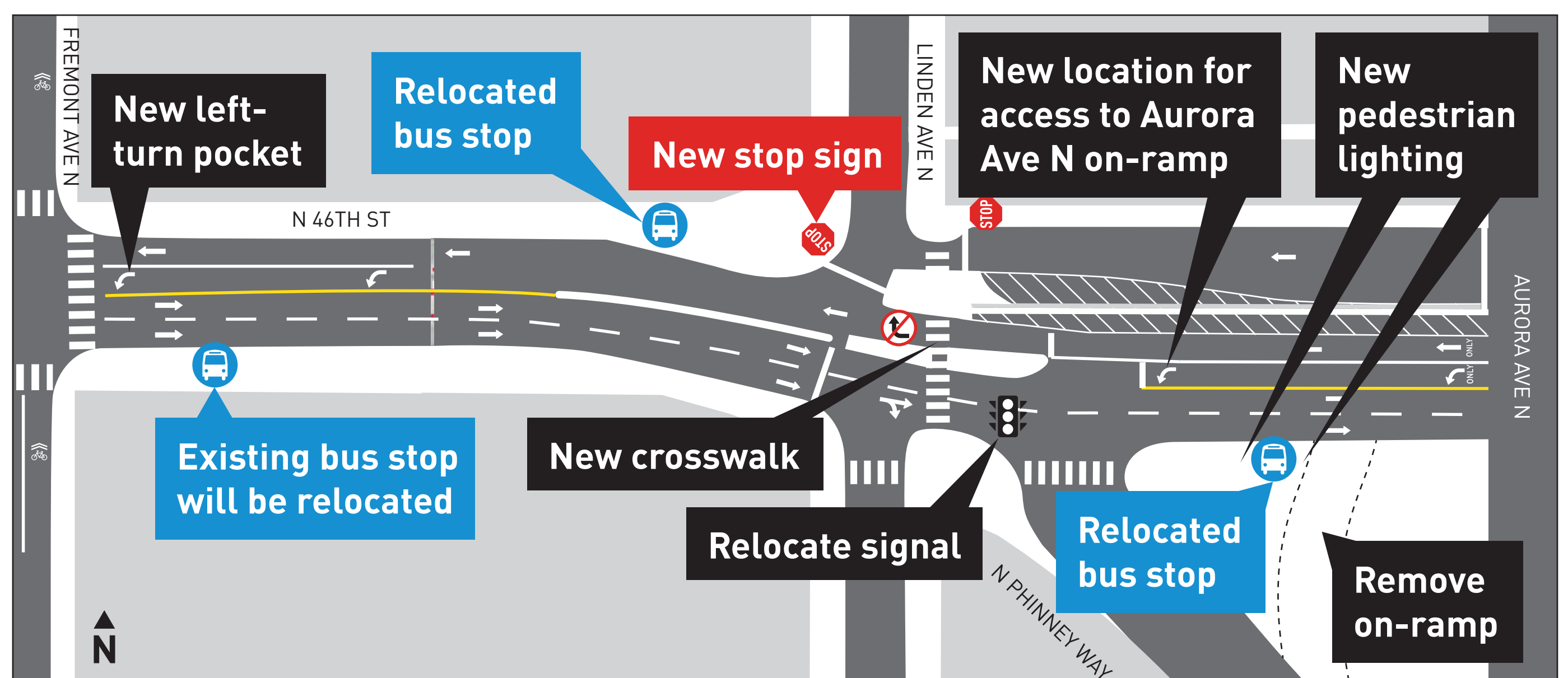
### This concept will:

- Add westbound left-turn pocket at Fremont Ave N
- Relocate eastbound bus stop near Green Lake Way N to just before Aurora Ave N
- Remove westbound right-turn access to Linden Ave N
- Add a stop sign westbound on upper N 46th St near Linden Ave N
- Install a new signalized north-south pedestrian crossing at Linden Ave N
- Construct median island and sidewalk extensions
- Relocate Traffic Signal
- Consolidate eastbound and westbound access to N Phinney Way/Aurora Ave N
- Relocate eastbound bus stop at Fremont Ave N
- Add new pedestrian lighting
- Require trolley overhead wire modifications
- New bus stop at Linden Ave N, relocated from Fremont Ave NE

## Before



## After



### Concept update:

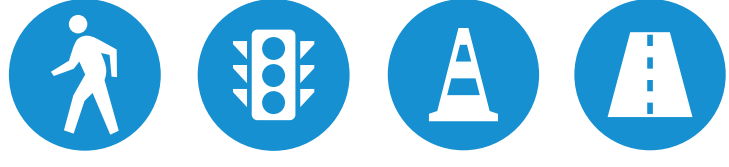
We have made changes at Linden Ave N and N 46th St to square up the intersection and improve sight line for vehicles entering N 46th St from the southbound Aurora offramp and Linden Ave N.







## Route 44



# Phinney Segment, N 46th St at Green Lake Way/Whitman Ave N

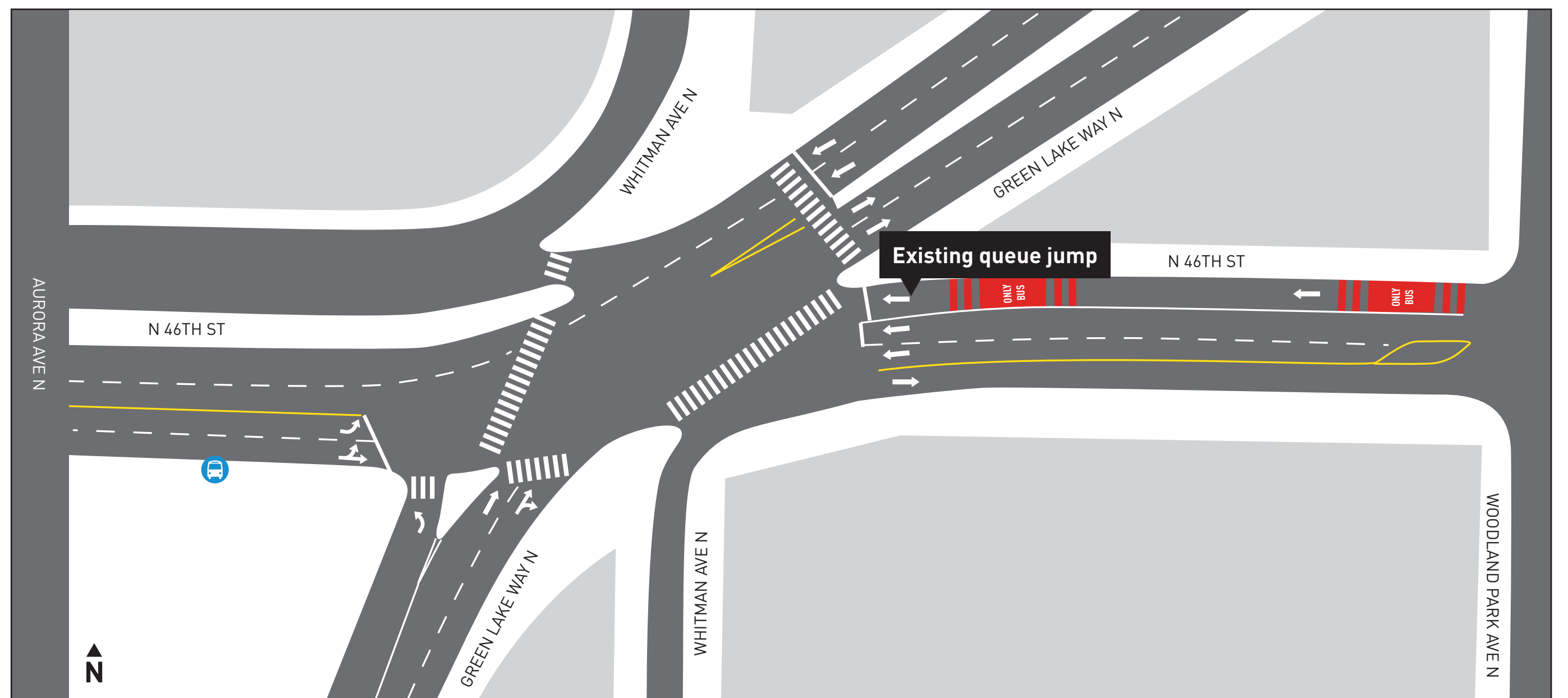
### Concept benefits:

This concept will modify the eastbound configuration for vehicles. Whitman Ave N will dead end at N 46th St to decrease the number of vehicle turning conflicts. Additional pedestrian improvements will also be constructed.

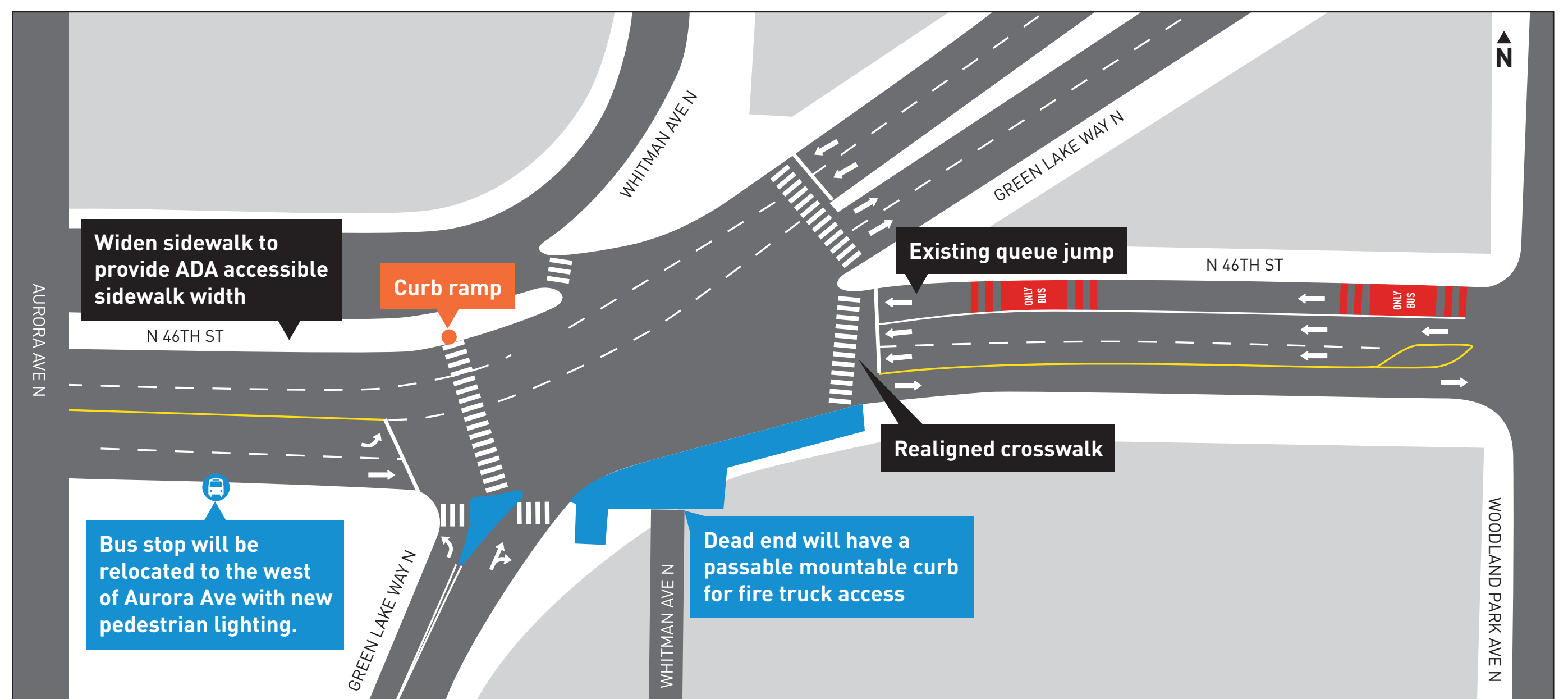
### This concept will:

- Realign crosswalk
- Dead end Whitman Ave N
- Relocate existing eastbound bus stop to west of Aurora Ave N
- Add new pedestrian lighting
- Require overhead wire modifications

## Before



## After



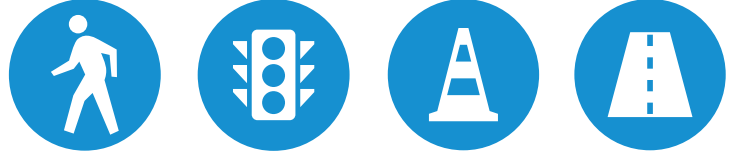
### Concept update:

After a more in-depth analysis of this concept it was determined that widening N 46th St just east of the Aurora overpass on N 46th St will not provide significant transit benefits. Similar benefits, at a lower cost, are possible with channelization and signalization changes.





## Route 44



# NE 45th St and I-5 Interchange

### Concept benefits:

This concept will improve traffic flow through this congested area for buses and through traffic. It will improve bus speeds and stop spacing along the corridor.

### This concept will:

In fall 2021, Metro plans to remove the westbound and eastbound bus stops on NE 45th St just west of 7th Ave NE. The removal of these stops is consistent with Metro, Sound Transit, and Community Transit's service restructures planned for fall 2021 when Sound Transit's North Link light rail extension opens. The restructure of Metro, Sound Transit, and Community Transit's service will result in fewer opportunities for people to transfer between I-5 bus routes that use the I-5 on-ramp.

