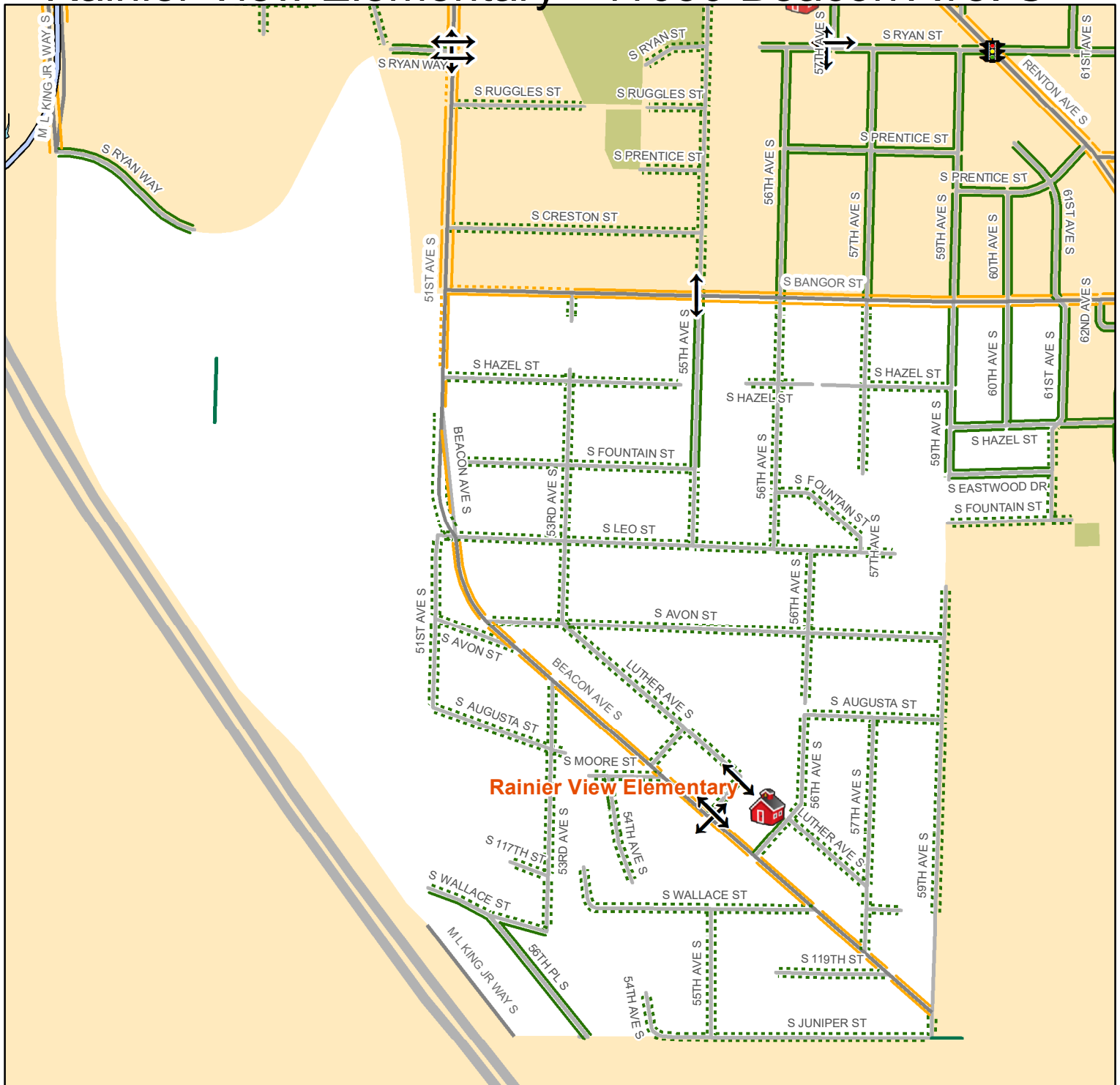


Rainier View Elementary - 11650 Beacon Ave. S



2019-2020 School Year Crossing Conditions

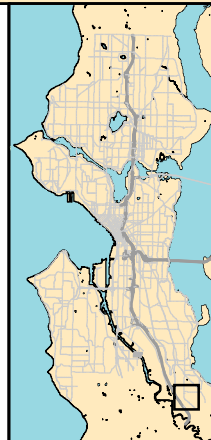
- Crossing Guard Assignment*
- School Patrol*
- Traffic Signals
- All Way Stop Intersection
- Crossing Beacon
- Designated School Crossing
- Bridge

Walking and Biking Conditions

- Overhead Crosswalk Sign
- Stairway
- Multi Use Path
- Neighborhood Greenway
- Protected Bike Lane
- Neighborhood Street with Sidewalk
- Neighborhood Street with no Sidewalk
- Busy Street with Sidewalk
- Busy Street with no Sidewalk (not recommended)

Community Facilities

- Community Center
- Library
- Police Station
- Fire Station
- Park



0 250 500 1,000
Feet



©2019, THE CITY OF SEATTLE.
All rights reserved. Produced by the
Seattle Department of Transportation.
No warranties of any sort, including accuracy, fitness
or merchantability, accompany this product.

Coordinate System: State Plane,
NAD83-91, Washington, North Zone
Orthophoto Source: Pictometry 2007

Plot Date : 8/22/2019
Author : PhamD
School_Walking_Maps2019

* Crossing guard and school patrol locations are subject to change.