



# Levy to Move Seattle

Levy Oversight Committee meeting



# Agenda

- 2018 Annual Report
- Performance measures
- BMP Implementation Plan briefing





# 2018 Annual Report



# 2018 annual report

- Report format/organization
- 2018 performance summary
- 2018 financial summary





# Report format/organization

- 3 Levy categories
- 30 Levy programs with corresponding ID number
  - Includes 12 discrete projects (i.e. #13 Fairview Bridge)
- 48 total deliverable categories

## 16 TREE TRIMMING & PLANTING

**Levy Commitment:** Replace every tree removed due to disease or safety with two new trees and add a new tree crew focused on quick response to critical pruning needs (such as clearances for people biking and walking, and at transit stops) and on ensuring clear sightlines to traffic signals and signs.

### SUMMARY

This program exceeded the annual target for most deliverables. SDOT Urban Forestry continuously plants 2018 and 2019 levy delivered street trees throughout the winter as it is the ideal time to plant trees for optimal survival. Both 2018 and 2019 tree planting goals will be met by the end of April 2019. In addition to these levy deliverables, Urban Forestry crews plant trees in support of Seattle City Light Urban Tree Replacement and Safe Routes to School programs.

### PERFORMANCE REPORT

LEVY DELIVERABLE	2016	2017	2018	2018 PLANNED	TOTAL TO DATE
Trees planted	452	338	237	300	1,027
Trees pruned (trimmed)	5,785	5,213	5,412	4,500	16,410
Trees removed	186	146	187	n/a	519
Landscape maintained	1,346	1,343	1,863	1,000	4,552
Tree or vegetation obstruction removed	443	837	489	400	1,769

### 2018 FINANCIALS

# Report format/organization: tracking Levy progress

- Symbols apply to Levy deliverable category
- Symbols note 2018 status compared to planned accomplishment
- Yearly Levy totals shown along with cumulative Levy totals

## PERFORMANCE REPORT

LEVY DELIVERABLE	2016	2017	2018	2018 PLANNED	TOTAL TO DATE
Blocks of new sidewalk built	15.3	42	34.75	54.75	92.05
Crossing improvements	18	15	13	16	46

-  Planned accomplishment exceeded
-  Planned accomplishment met
-  75-99% of planned accomplishment met
-  Less than 75% of planned accomplishment met

# 2018 performance summary

- Met or exceeded 2018 planned deliverables in 25 Levy deliverable categories
- Advertised for Fairview Bridge
- 100% design on Northgate Bridge
- Construction progress on Lander Bridge
- 41 Safe Routes to School projects
- Completed 2.34 miles of protected bike lanes with 4.61 miles underway at end of year
- Completed 7.92 miles of greenways with 5.08 miles underway at end of year
- Repaved 7.5 lane miles with 25.7 lane miles of paving underway at end of year
- Built 34.75 blocks of new sidewalk with 20.5 blocks underway at end of year
- Built 6 stairways
- Built 24 transit spot improvements

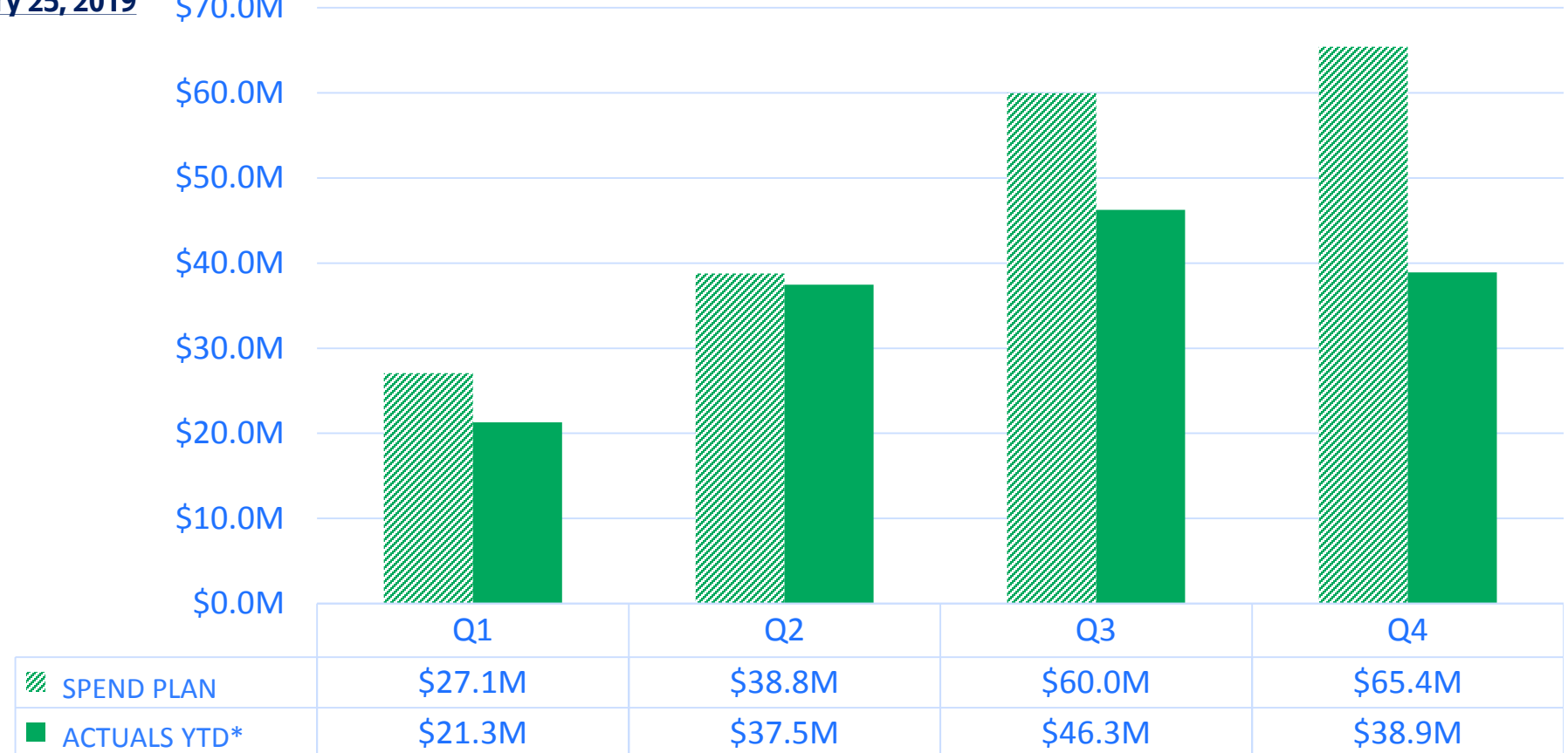


# Reviewing our last update: Q4 2018 preview

2018 quarterly spending, actuals v. spend plan – ALL FUNDS, ALL PROJECTS

\*Actuals data as of January 25, 2019 \$70.0M

SUMMARY	\$M
Spend Plan	\$190
Actuals	\$155

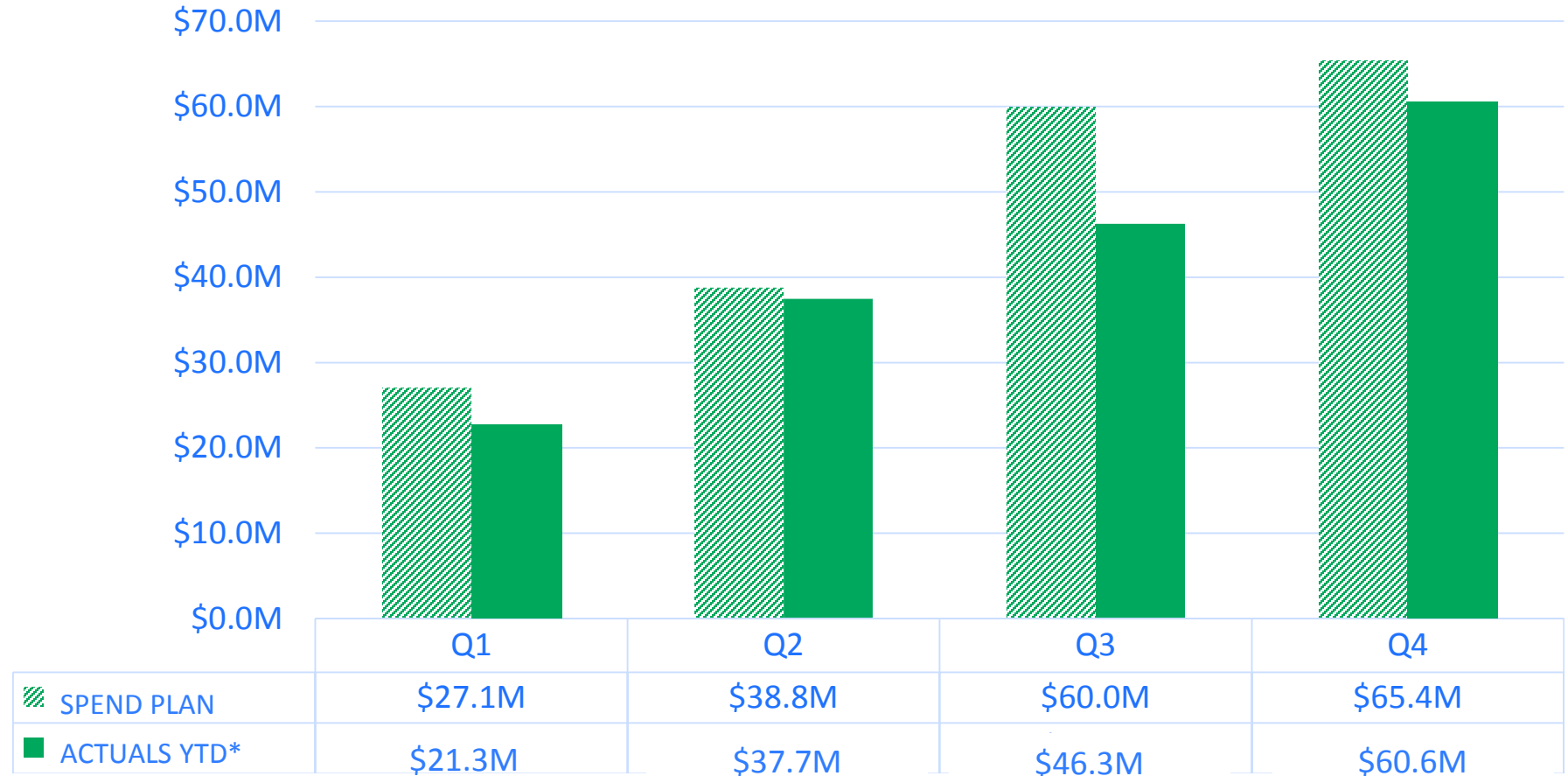




# 2018 financial summary: spending actuals

2018 quarterly spending, actuals v. spend plan - ALL FUNDS, ALL PROJECTS

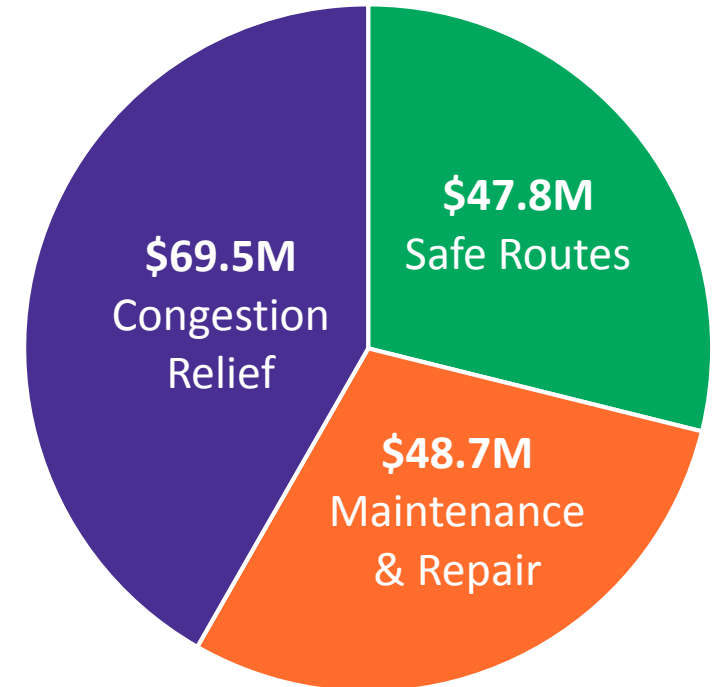
SUMMARY	\$M
Spend Plan	\$190
Actuals	\$166



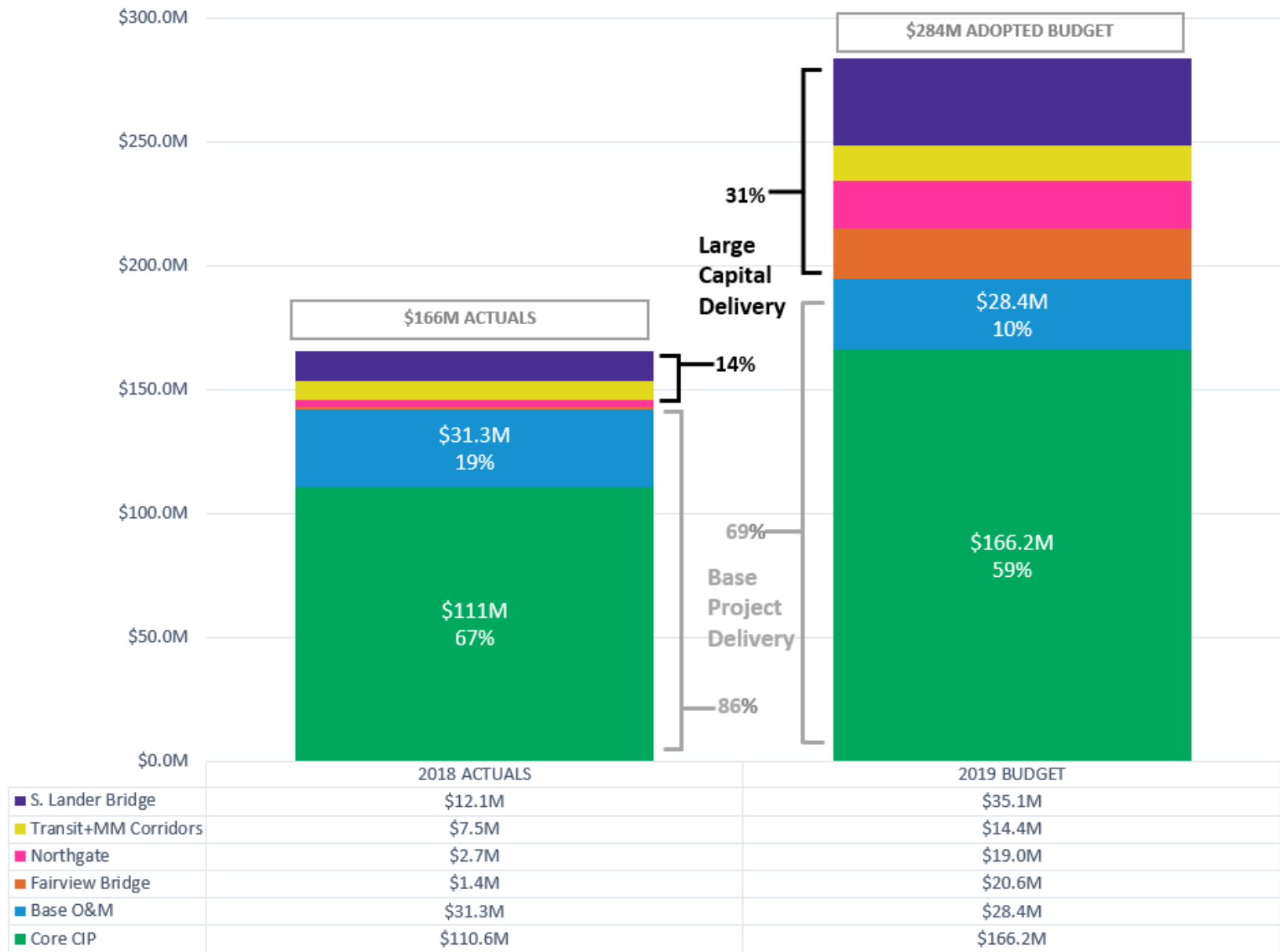
# 2018 financial summary: spending summary

2018 spending by Levy category  
(\$165.9M total, all funds)

	MOVE SEATTLE	ALL FUNDS
ADOPTED BUDGET	\$ 115.8 M	\$ 170.9 M
REVISED BUDGET	\$ 92.8 M	\$ 209.0 M
2018 SPEND PLAN	\$ 92.8 M	\$ 190.0 M
2018 TOTAL SPEND, ACTUALS	\$ 81.9 M	\$ 165.9 M
TOTAL SPENT TO DATE, LIFE OF LEVY	\$ 210.7 M	\$ 419.3 M



# 2018 financial summary: large capital delivery, 2018 actuals vs. 2019 budget



# Questions?

[MoveSeattle@seattle.gov](mailto:MoveSeattle@seattle.gov)

[www.seattle.gov/LevytoMoveSeattle](http://www.seattle.gov/LevytoMoveSeattle)





# Performance measures



# Discussion and next steps





# Bicycle Implementation Plan

## 2019-2024

Jim Curtin & Monica Dewald



# Presentation overview

- Recent progress
- Prioritization process
- Equity
- Risk assessment
- Outreach
- 2019-2024 Proposed Implementation Plan
- Next steps





# Seattle is an award-winning bike city

**2018: #1 Bicycle City** by  
Bicycling Magazine

**2018: #1 New Bikeways—2<sup>nd</sup>**  
Avenue Protected Bike Lane  
(PBL) by People for Bikes

**2016: #1 New Bike Facility –**  
Westlake PBL by People for  
Bikes

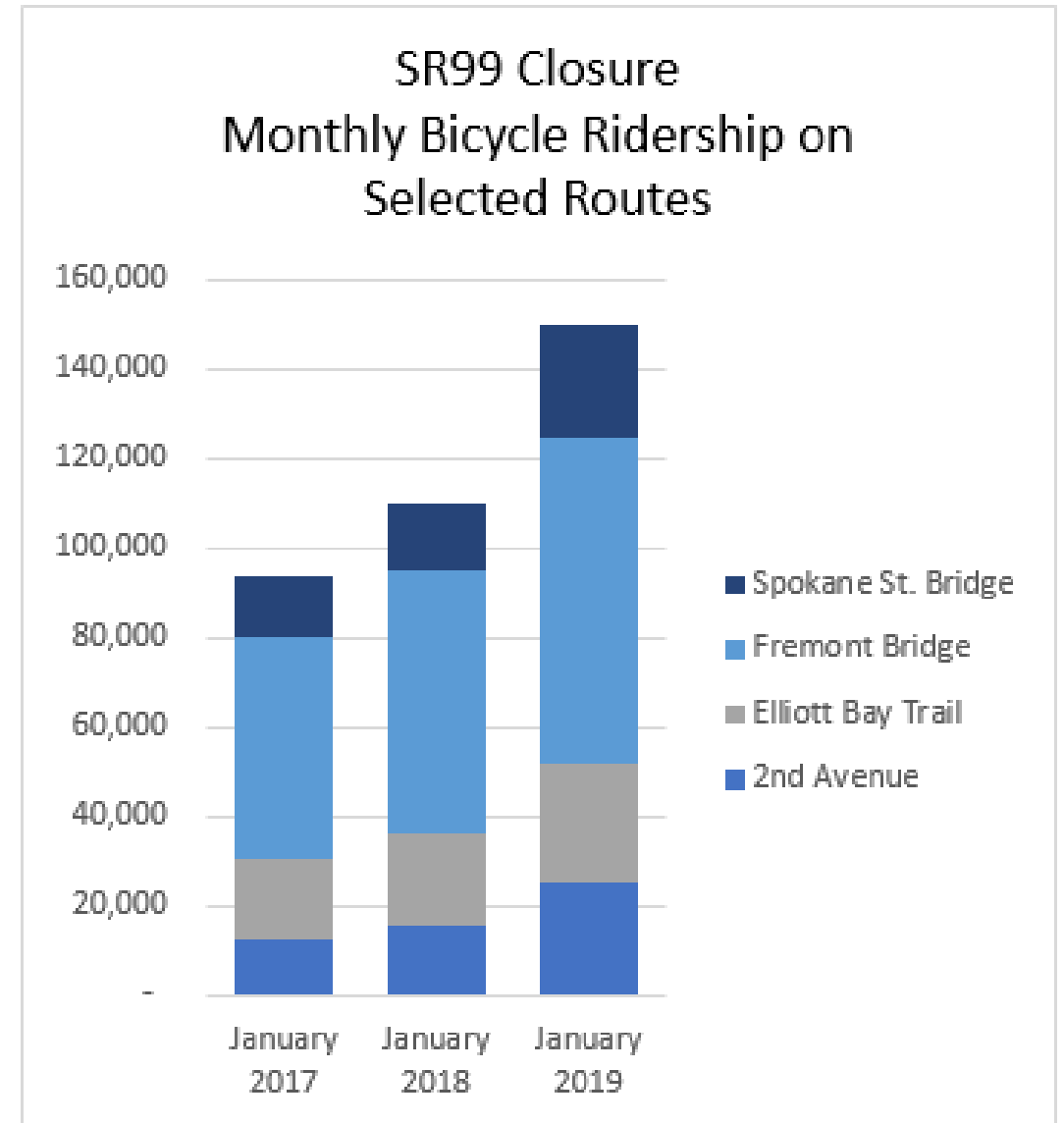
Westlake Protected Bike Lane Project



# Data shows more people are riding bikes

- 2018 bike ridership increased by 12% from 2017\*
  - 2nd Ave PBL increased 32%
- Bikes were a good travel option during the first chapter of the Seattle Squeeze

\* Data based on 4 permanent bike counters at Spokane St, Fremont Bridge, Elliott Bay Trail, and 2<sup>nd</sup> Ave



# Progress in building a complete bike network

- Recently completed
  - West Seattle NGW
  - Columbian Way NGW
  - Rainier N-S NGW
  - 7<sup>th</sup> Ave PBL
- Under construction for completion in 2019
  - NE 65<sup>th</sup> St PBL
  - Columbian Way PBL
  - Wilson Ave S PBL
  - Swift/Myrtle/Othello PBL
- In design
  - Center City Bike PBL Network
  - Stone Way and Green Lake PBL
  - N 34<sup>th</sup> St PBL
  - E Marginal Way PBL
  - Delridge Way SW PBL
  - Eastlake Ave E PBL



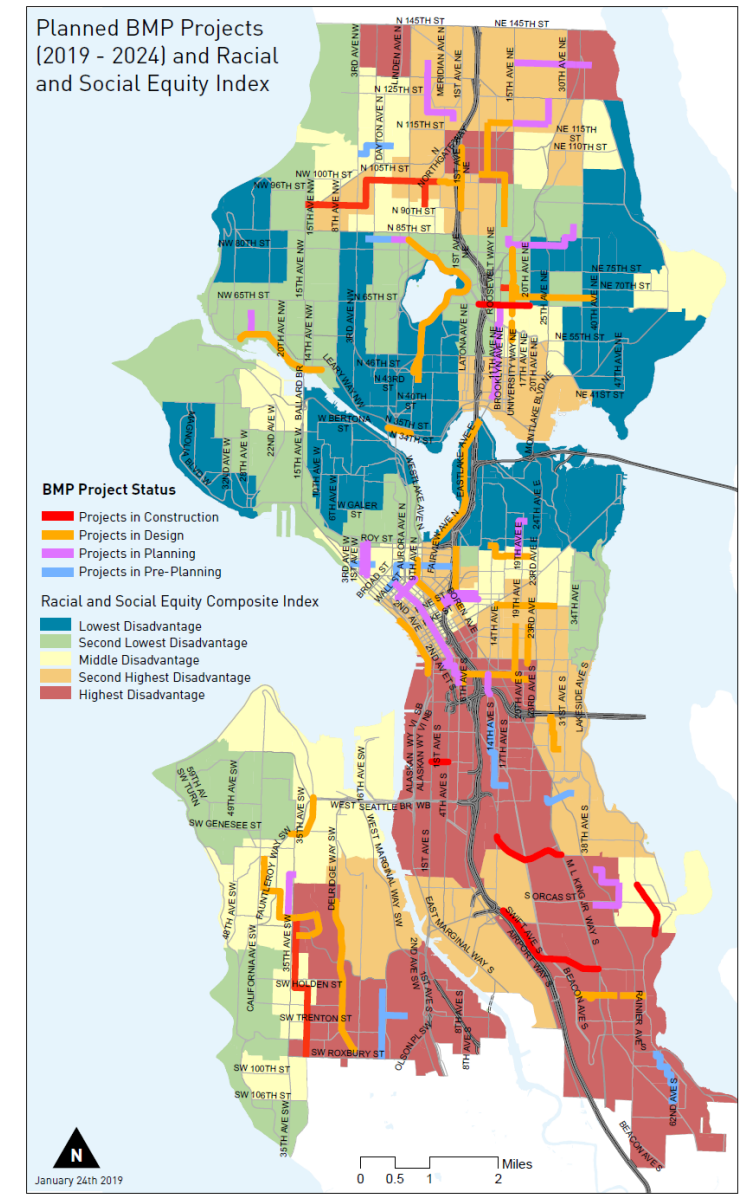
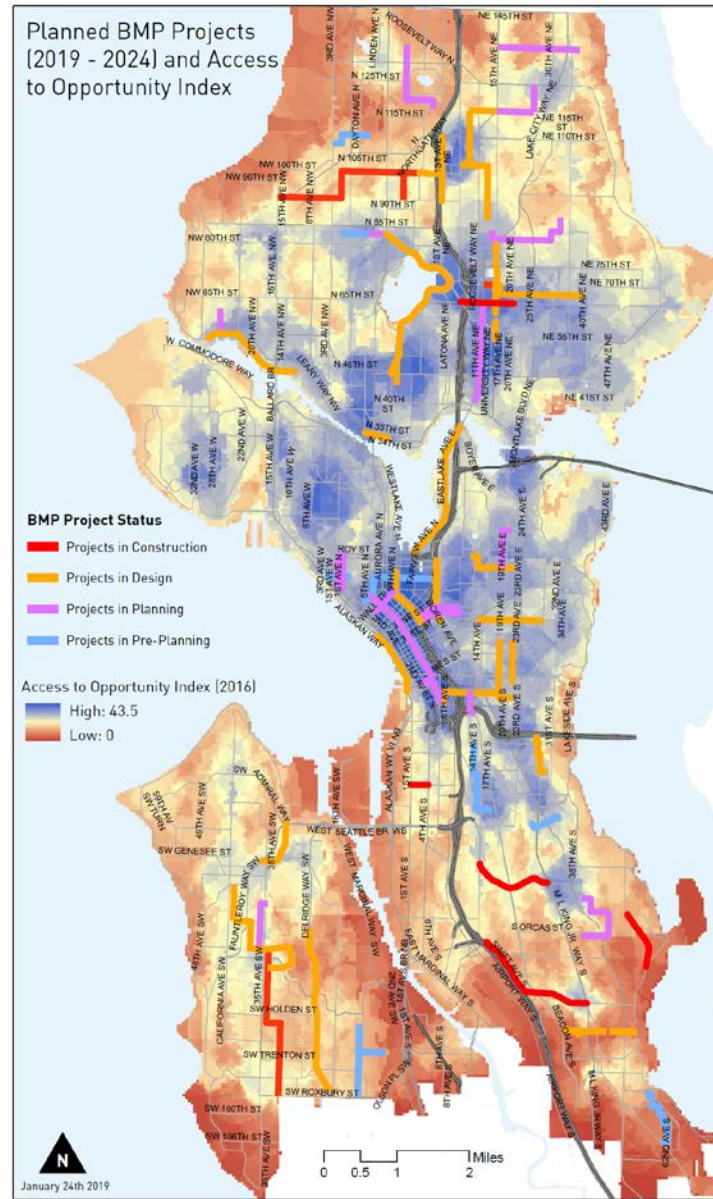
# How we prioritize projects in the plan

- Quantitative
  - Safety
  - Connectivity
  - Equity
  - Ridership
  - Livability
- Qualitative with Seattle Bike Advisory Board:
  - Leveraging opportunities
  - Project coordination
  - Geographic equity
  - Connectivity to light rail, transit, and Urban Villages
  - Funding availability per the Levy to Move Seattle reassessment



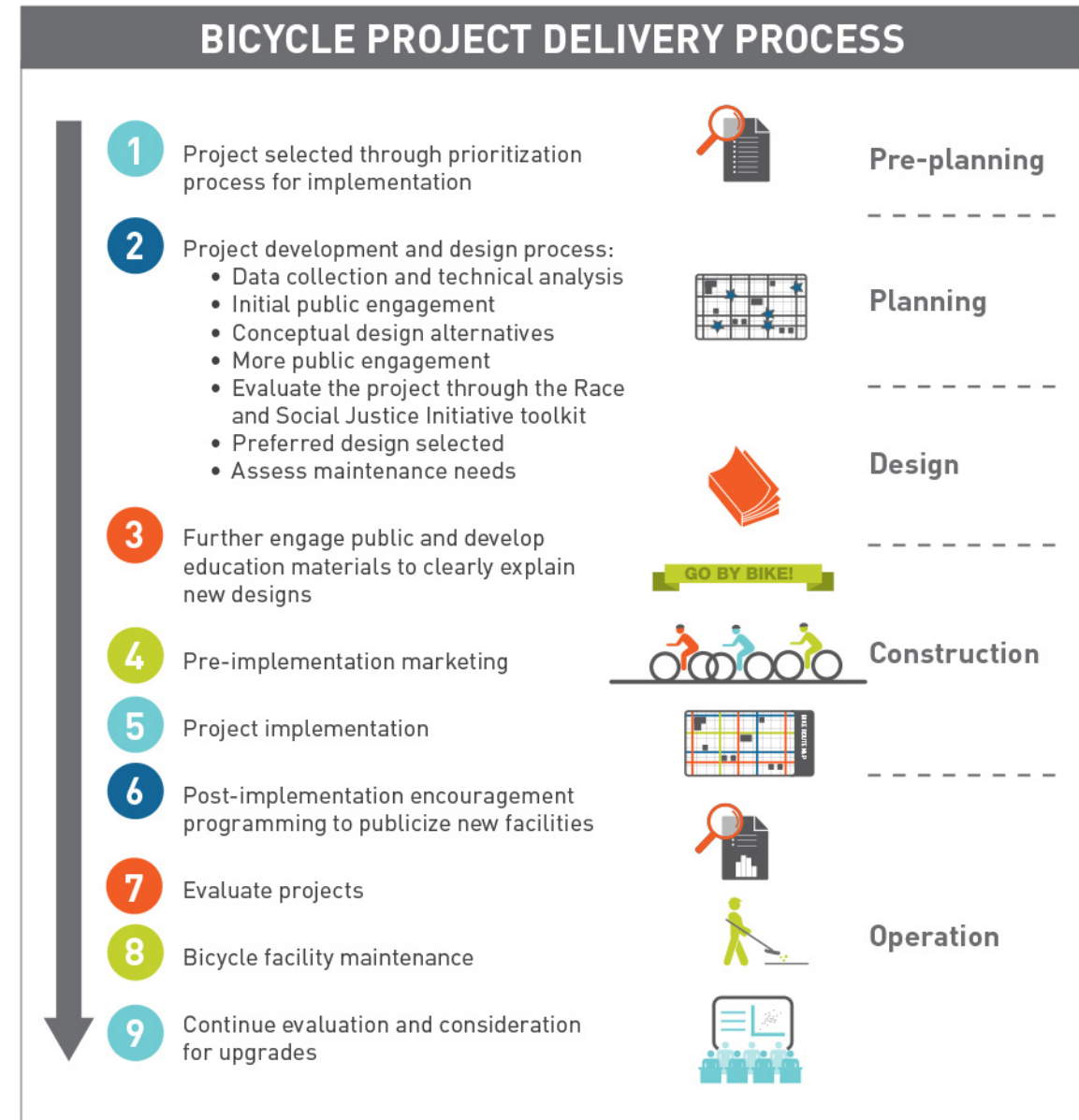
# A commitment to equity

- Projects reviewed for geographic balance, socioeconomic factors, health, and accessibility
- Incorporated into quantitative analysis and confirmed through qualitative prioritization processes



# Community engagement is welcome on each project

Once the implementation plan is finalized, outreach is conducted for each project at key planning, design and construction milestones



# New this year: a detailed risk assessment

- Objective: Increase transparency
- Considerations:
  - Design phase
  - Funding levels
  - Potential partnerships
  - Right-of-way requirements
- Next step—gather community input on projects in planning phase



# Getting the word out to a wider audience

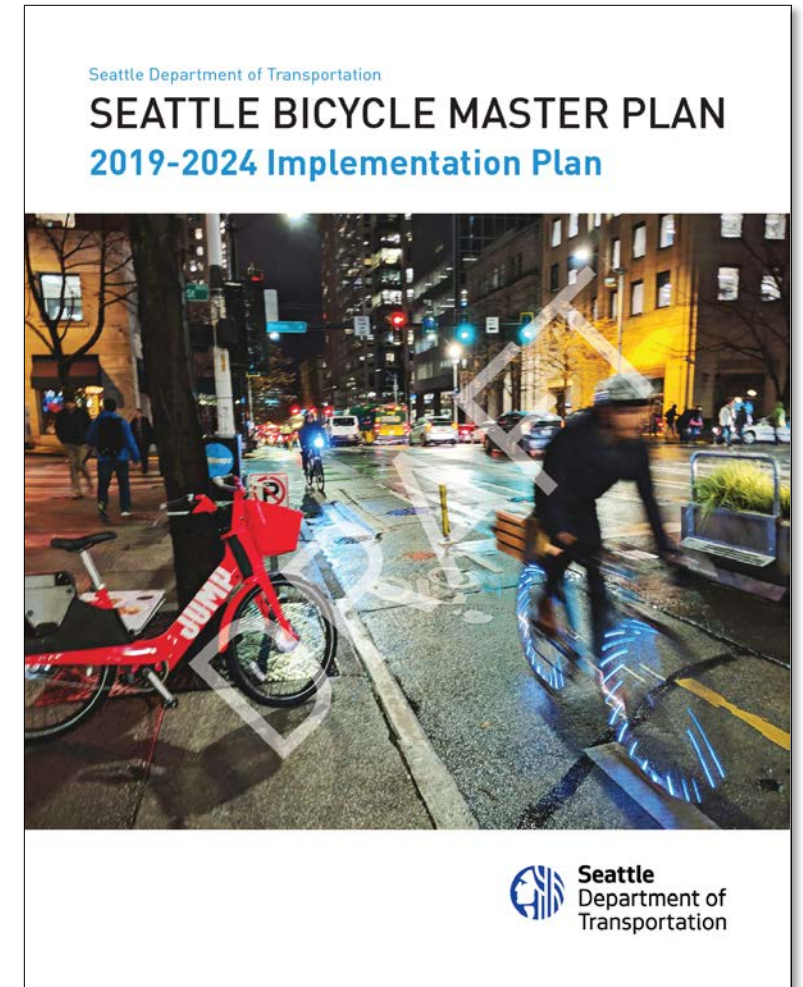
- Share value of a connected bike network and how projects were selected
- Discuss project list and gather feedback on projects in **planning phase**
  - April 2: Levy Oversight Committee
  - April 3: Seattle Bicycle Advisory Board (SBAB)
  - April 8 – 28: Outreach events in North, Central, and South Seattle
  - May: Report back to SBAB and Council





# 2019 - 2024 Implementation Plan basics

- Six-year plan to align with Levy to Move Seattle reassessment
- 62 miles of new bike facilities constructed and designed in current plan
- \$76.8 million in investments (\$63.9M is Levy funding)
- City's commitment to build a connected and safe bike network as Seattle grows



# Protected bike lanes, bike lanes, and trails

- Projects address potential safety issues identified in the *Bicycle and Pedestrian Safety Analysis*
- Connections made:
  - 22 to existing or proposed frequent transit network routes
  - 4 to existing or soon to be open LINK stations
  - 16 provide bicycle connections near schools



# Neighborhood Greenways

## Connections made:

- 10 new Safe Routes to School connections
- 27 projects connect to frequent transit network routes
- 11 projects connect to existing or soon to be open LINK stations



# Next Steps

Date	Activity/action
April 2	Council Transportation Committee briefing
April 2	Levy Oversight Committee briefing
April 3	Seattle Bicycle Advisory Board update
April 8 – 28	Outreach events
May	Final Plan transmitted to City Council
Ongoing	Project specific outreach



# Questions?

[Jim.Curtin@Seattle.gov](mailto:Jim.Curtin@Seattle.gov)

[Monica.Dewald@Seattle.gov](mailto:Monica.Dewald@Seattle.gov)

[www.seattle.gov/transportation/document-library/citywide-plans/modal-plans](http://www.seattle.gov/transportation/document-library/citywide-plans/modal-plans)

[www.seattle.gov/transportation](http://www.seattle.gov/transportation)

