

Pedestrian Master Plan Update

Performance Measures



SPAB Workshop #3: Performance Measures

Michelle Marx, Ian Macek

April 5, 2016

Performance measures

- Reviewed 2009 measures to determine 2016 measures
 - 1 new
 - 5 revised
 - 7 removed
- Align with SDOT initiatives and provide more focus
 - Safety/Vision Zero
 - Network completion
 - Mode share and pedestrian activity
 - Safe Routes to School
- Develop targets and/or trends
- Use available and reliable data

1. Number of pedestrian fatalities and serious injury collisions (new)

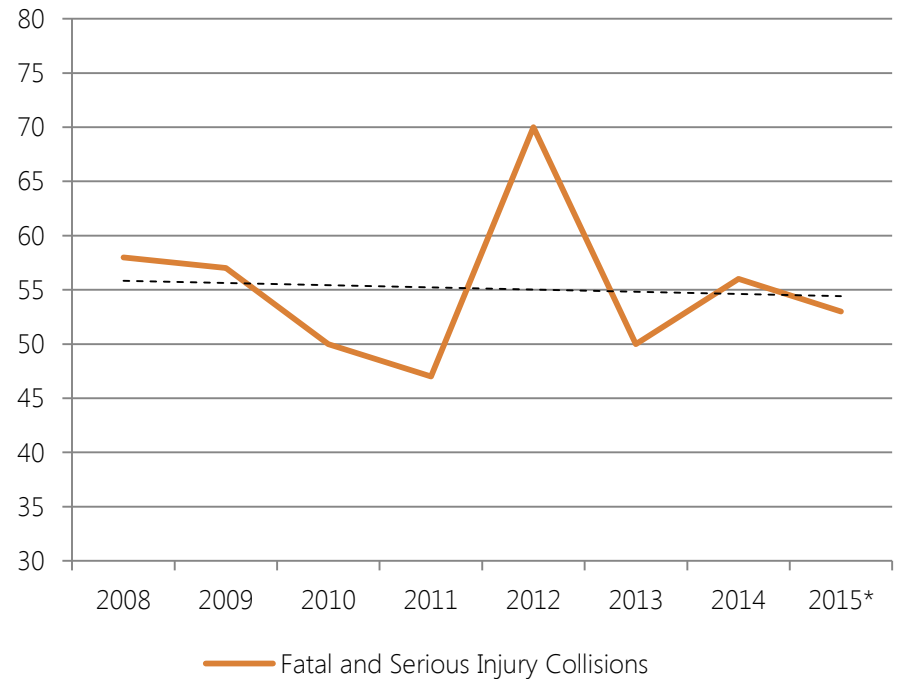
2016 Measure

Number of pedestrian fatalities and serious injury collisions

Target

Pedestrian fatalities and serious injury collisions reach zero by 2030.

Fatal and Serious Injury Pedestrian Collisions, 2008 – 2015*



2. Rate of crashes involving pedestrians

2016 Measure

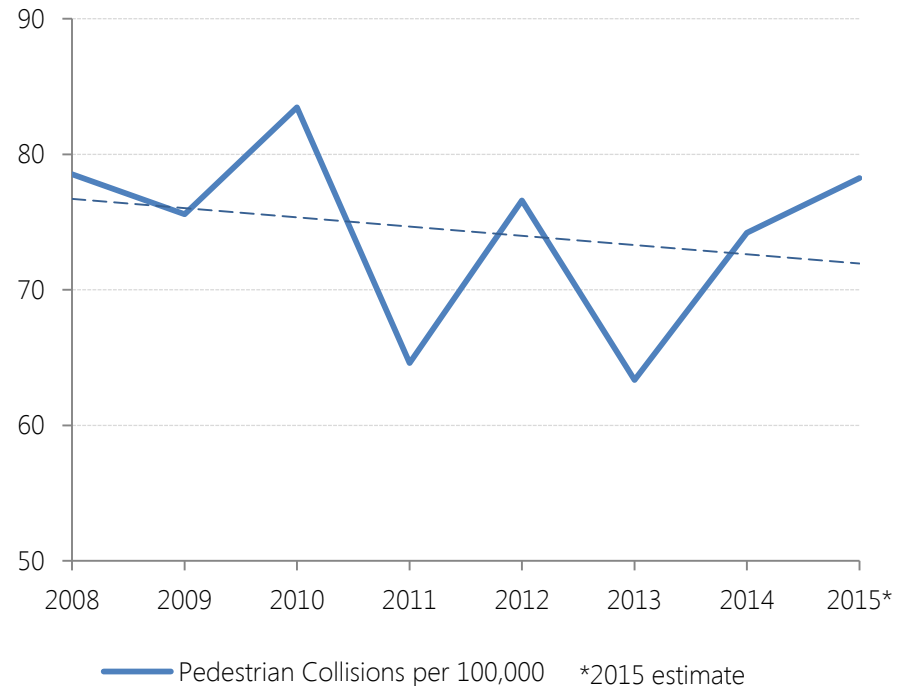
Rate of crashes involving pedestrians

Reported both by pedestrian crashes per 100,000 residents, and pedestrian crashes per pedestrian trips

Trend

Decreasing rate of pedestrian crashes per 100,000 residents

Pedestrian Collisions per 100,000 Residents, 2008 – 2015*



3. Percent of Priority Investment Network completed

2016 Measure

Percent of arterial sidewalks in Priority Investment Network completed.

Target

100% of priority investment network arterial sidewalks are complete by 2035.

4. Mode share

2016 Measure

Mode share (percentage of trips made on foot as measured in the PSRC Household Travel Survey)

- 2006: 18.1%
- 2014: 24.5%

Trend

Increasing percentage of trips

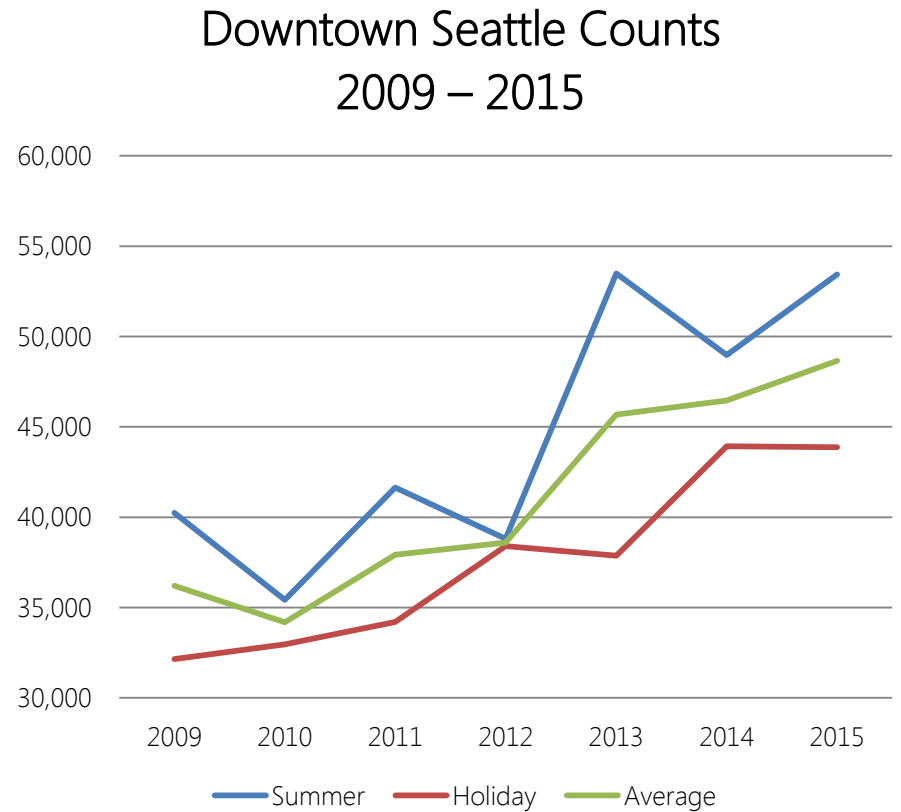
5. Pedestrian activity

2016 Measure

Pedestrian activity
(number of pedestrians in
selected count locations)

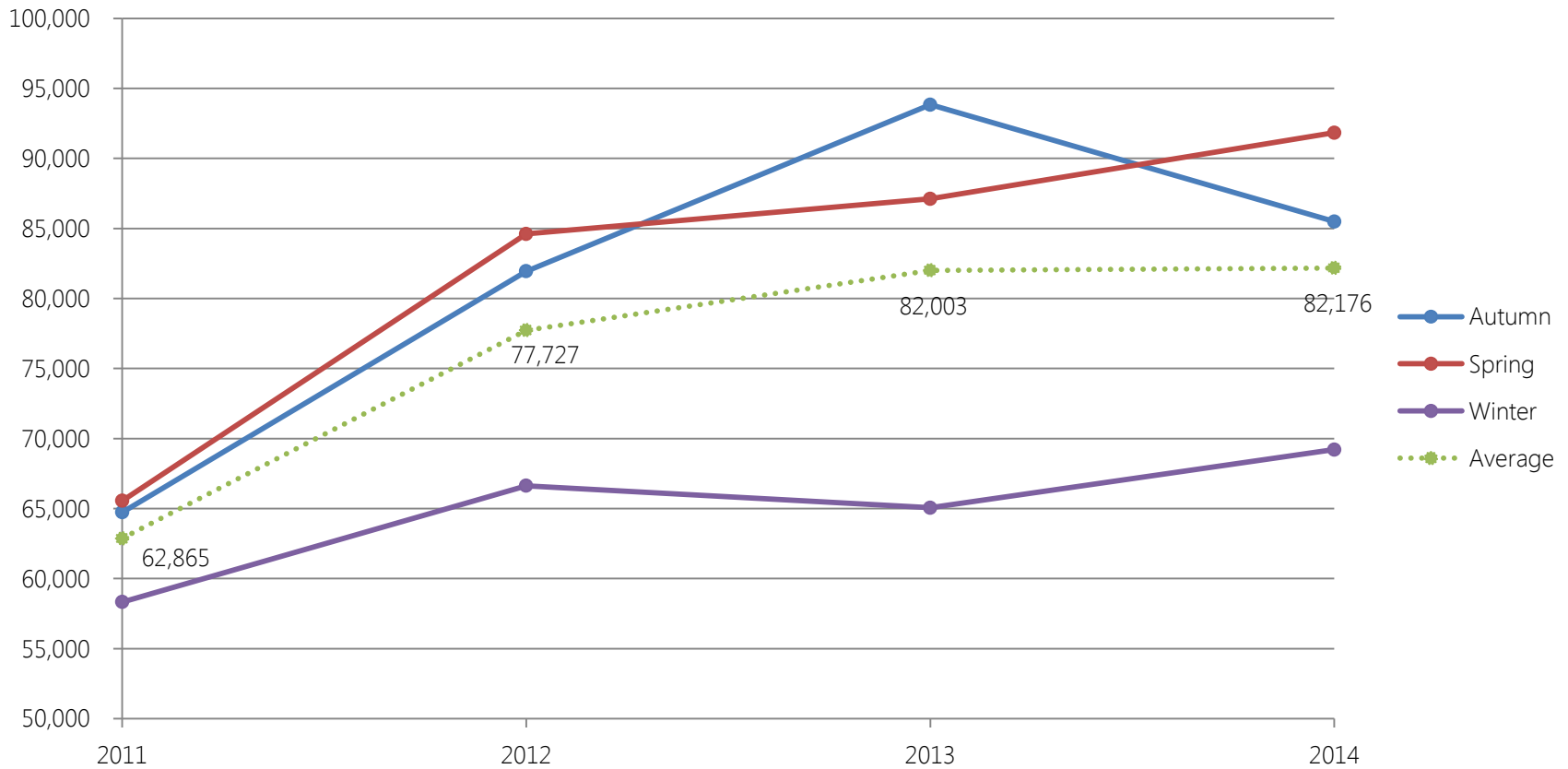
Trend

Increasing number of
pedestrians at count
locations over time



5. Pedestrian activity

Citywide Pedestrian Count Annual Trend, 2011 – 2014*



*2015 data coming soon

6. Safe Routes to School

2009 Measure

Children walking or biking to or from school

Rationale

Outcome based, but does not include all schools. SRTS program is exploring improved data collection methods.

Trend

Increasing number of trips by children

For select schools, the percent of children walking to school:

- 2007: 14% (pre-SRTS)
- 2011: 18.3%
- 2013: 22.7%.

Safe Routes to School

2009 Measure

School participation in pedestrian safety, education, and encouragement programs

Rationale to delete

Move to an outcome based SRTS measure. Count will be continue to be collected by the SRTS program.

Number of public schools that participated

- 2008/2009: 4
- 2010/2011: 4
- 2014: 29

Vehicle speeds along identified corridors

	Speed Limit	Direction	85th Percentile Speeds					Overall trend
			2011	2012	2013	2014	2015	
Aurora Ave N, south of N 112th St	35	NB	42.8	44.1	42.7	25.5	42.9	Above
Aurora Ave N, south of N 112th St	35	SB	42.5	41.7	42.2	42.1	43.5	Above
Stone Way N, south of N 45th St	30	NB	25.2	25.1	25.1	23.6	25.2	Below
Stone Way N, south of N 45th St	30	SB	27.1	26.7	27.1	26.7	26.9	Below
24th Ave NW, south of NW 80th St	30	NB	31.6	32.3	31.8	31.8	31	Above
24th Ave NW, south of NW 80th St	30	SB	31.5	32.2	31.6	31.6	31.1	Above
Rainier Ave S, northwest of S Holly St	30	NWB	37.5	38.5	39.1	39.9	38.8	Above
Rainier Ave S, northwest of S Holly St	30	SEB	36.3	37.2	37.1	37.5	37	Above
Fauntleroy Way SW, south of SW Alaska St	35	NB	35.2	34	35.2	35.2	29.1	Below
Fauntleroy Way SW, south of SW Alaska St	35	SB	34.2	33.6	33.1	20.9	28.6	Below
Percentage of corridors with 85 th percentile at or below the posted speed limit			30%	40%	30%	40%	40%	

2009 Measure

Change in vehicle speeds on identified corridors

Rationale to delete

Continuous data collection started in 2011 for the identified corridors (and others), and will continue to be collected. Data can be found in the annual SDOT Traffic Report.

Transit ridership

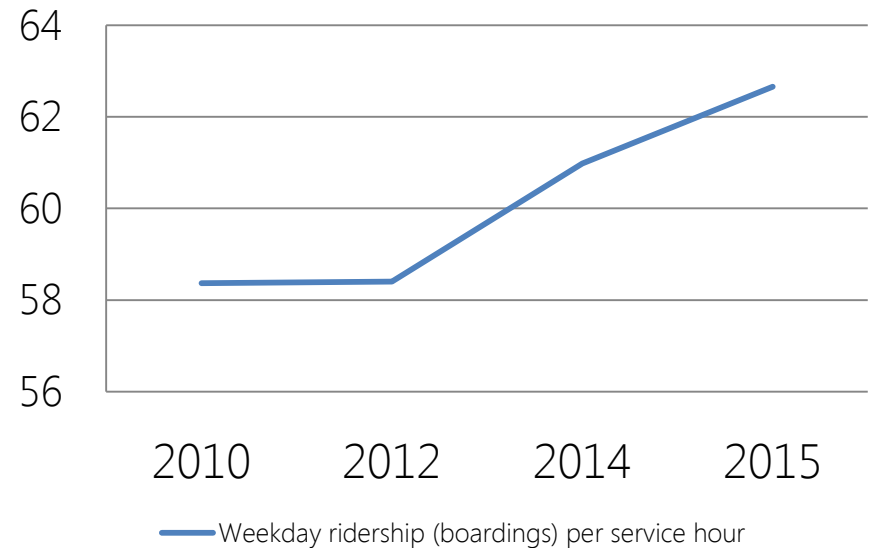
2009 Measure

Transit ridership: boardings and alightings per service hour

Rationale to delete

The measure was created before SDOT had a Transit Master Plan, and the transit ridership data is included on the Performance Seattle Dashboard.

Weekday boardings per service hour



Service Change	Year	Weekday boardings on Seattle Routes	Service Hours	Weekday boardings per service hour
Fall	2010	218,677	3,746	58.37
Fall	2012	215,582	3,691	58.40
Spring	2014	224,042	3,674	60.98
Spring	2015	224,056	3,575	62.66

Self reported physical activity

2009 Measure

Self reported physical activity (percentage of respondents reporting little or no physical activity in King County health surveys)

Rationale to delete

Data has not been available at reliable frequencies, and is collected/tracked by outside agencies.

Seattle

- 2006 and 2014: 11%

King County

- 2006: 14.5% to
- 2014: 15%

Streetscape vibrancy

2009 Measure

Streetscape vibrancy
(number of annual street
use permits that include
streetscape elements)

Rationale to delete

The 2009 PMP indicated
the need to evaluate this
measure. It is not a strong
indicator of PMP
implementation.

Year Issued	2008	2009	2010	2011	2012	2013	2014	2015	Total per permit type
Block Party & Play Streets				1		77	307	433	818
Farmers Market				8	10	9	11	6	44
Festival Street				1	4	2	2	1	10
ID Pole Banners	8	7	3	1	8	2	3	7	39
Sidewalk Café	8	26	26	28	33	35	40	34	230
Street Vending		1		46	135	174	214	230	800
Tables & Chairs	8	7	18	18	14	9	7	11	92
Total per year	24	41	47	103	204	308	584	722	2,033

Driver and pedestrian behaviors and awareness

2009 Measure

Driver and pedestrian behaviors and awareness of pedestrian laws

Rationale to delete

Measure relies on the KAB survey results, and there is no identified funding to continue the KAB survey every five years.

Percentage of drivers who say they already do enough to stop for pedestrians

- 2008: 69%
- 2014: 68%

Percentage of pedestrians that say they already do enough to be safe and pay attention to vehicles

- 2008: 77%
- 2014: 79%

Percentage of survey respondents who reported they are aware of each of the four vehicle/pedestrian regulations noted in survey.

- 2008: 71%
- 2014: 68%

Public communication about pedestrian issues

2009 Measure

Increase public engagement about pedestrian issues (number of website hits)

Rationale to delete

The PMP is moving away from an "online only" document, and the measure is not a strong indicator of PMP implementation.

Website hits:

- 2013: 25,000
- 2014: 29,200
- 2015: over 31 000

Questions?

michelle.marx@seattle.gov | (206) 684-0633

ian.macek@seattle.gov | 206.684.7576

www.seattle.gov/transportation/bike.htm

www.seattle.gov/transportation

