



PLAY FOR 2-5 YEAR OLDS



PLAY AREA FOR 5-12 YEAR OLDS



PLAY EQUIPMENT FOR 5-12 YEAR OLDS

BACKGROUND

PARK WAS ACQUIRED IN 1941 AND THE PLAYFIELD TAKES ITS NAME FROM THE COMMUNITY WHICH WAS NAMED BY REALTOR/DEVELOPER HARRY TREAT IN HONOR OF HIS DAUGHTER 'LOYAL'. CC BUILT IN 1950

- PRIMARY USER GROUPS:**
1. FAMILIES WITH CHILDREN
 2. PICNIC FACILITY USERS
 3. DAY CAMPS
 4. PARK USERS

OPPORTUNITIES

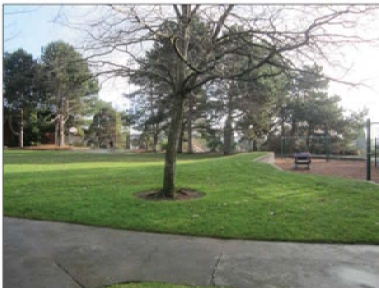
- + HIGH USE BY NEIGHBORHOOD, PRE-SCHOOL, & CHILD CARE CENTERS
- + OPEN LAWN OFFERS OPEN PLAY & SEATING OPPORTUNITIES
- + MATURE TREES ENCLOSE THE SITE AND LEND TO NATURAL CHARACTER OF THE SITE.
- + VIEW THROUGH TREES TOWARDS DOWNTOWN, HISTORIC VIEW TO MT. RAINIER
- + LOOP PATH OFFERS GOOD CIRCULATION
- + HILLSIDE OFFERS NATURAL PLAY OPPORTUNITIES.
- + LEVEL GRADE PROVIDES FOR UNIVERSAL ACCESSIBILITY
- + ADJACENT COMMUNITY CENTER PROVIDES TIES TO COMMUNITY PROGRAMMING
- + PLAY AREA OFFERS OPPORTUNITY FOR SIBLINGS OF BALL FIELD USERS DURING GAMES
- + COMMUNITY CENTER & FIELD PROJECT OFFER ECONOMIES IN ADDRESSING STORM WATER AND ADA

CONSTRAINTS

- PLAY AREA IS UNDERSIZED FOR COMMUNITY CENTER STANDARDS (6500 SF USUAL)
- RETAINING WALL AND BERM CUT OFF ACCESS TO OPEN LAWN FOR PLAY AND PICNIC
- PLAY AREA HAS LIMITED PLAY VALUE FOR 5-12 Y.O. AND LACKS PLAY FOR 2-5 Y.O.
- PATHS TO THE PLAY AREA ARE NOT ACCESSIBLE DUE TO CONDITION.
- LACK OF SEATING FOR CARE GIVERS
- SLOPE TO STREET IS STEEP AND LACKS VEGETATION
- PARKING DOES NOT MEET ADA STANDARDS
- NO UNDER-STORY PLANTS REMAINING



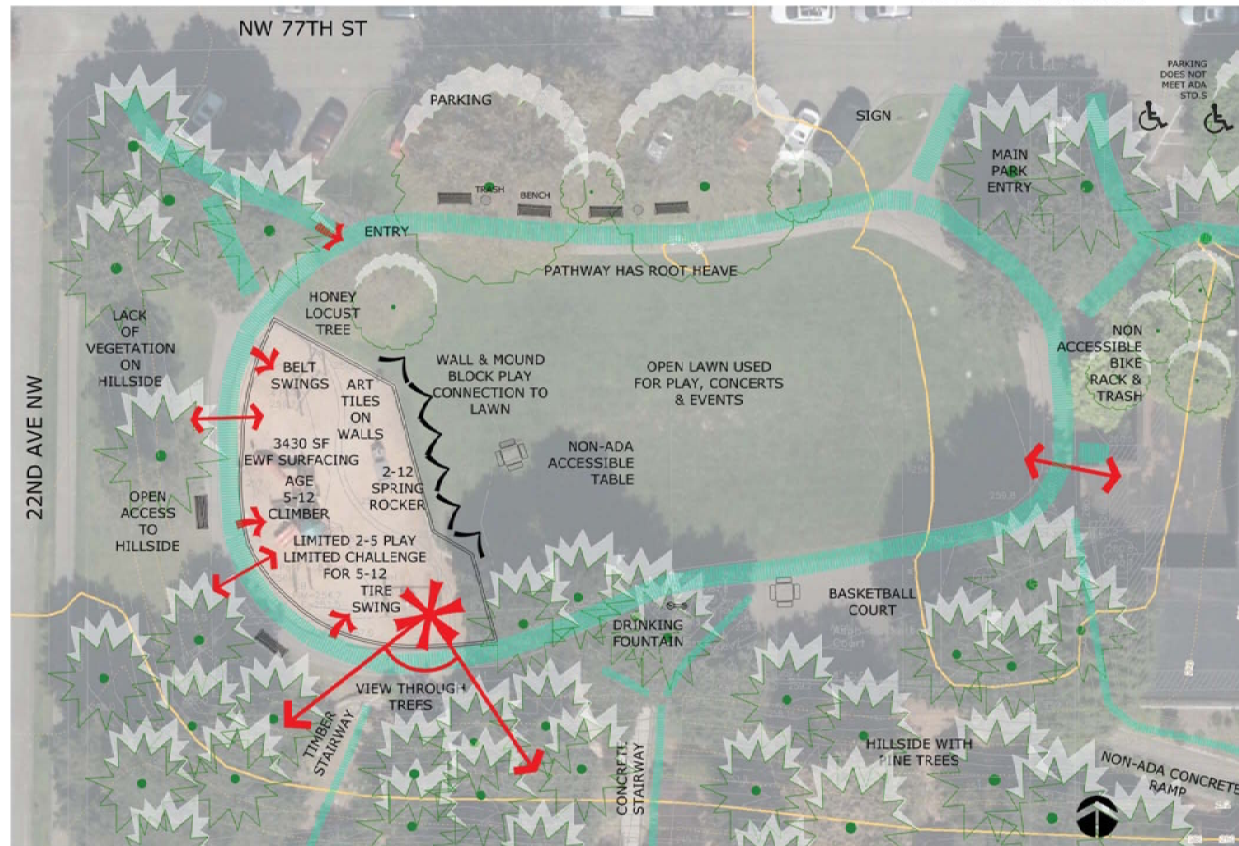
BASKETBALL COURT

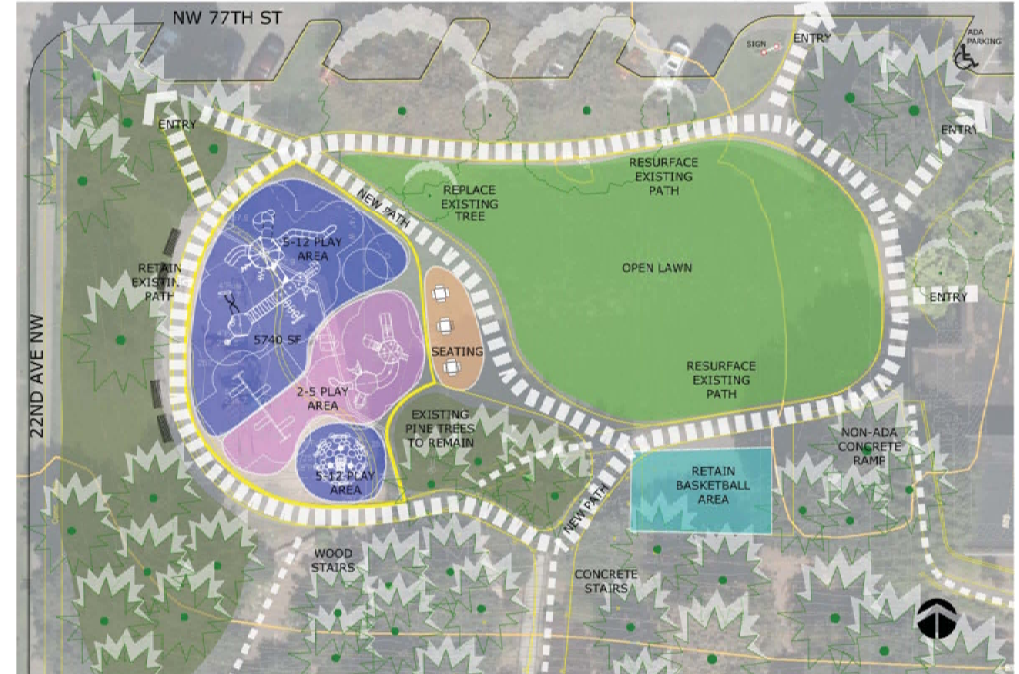
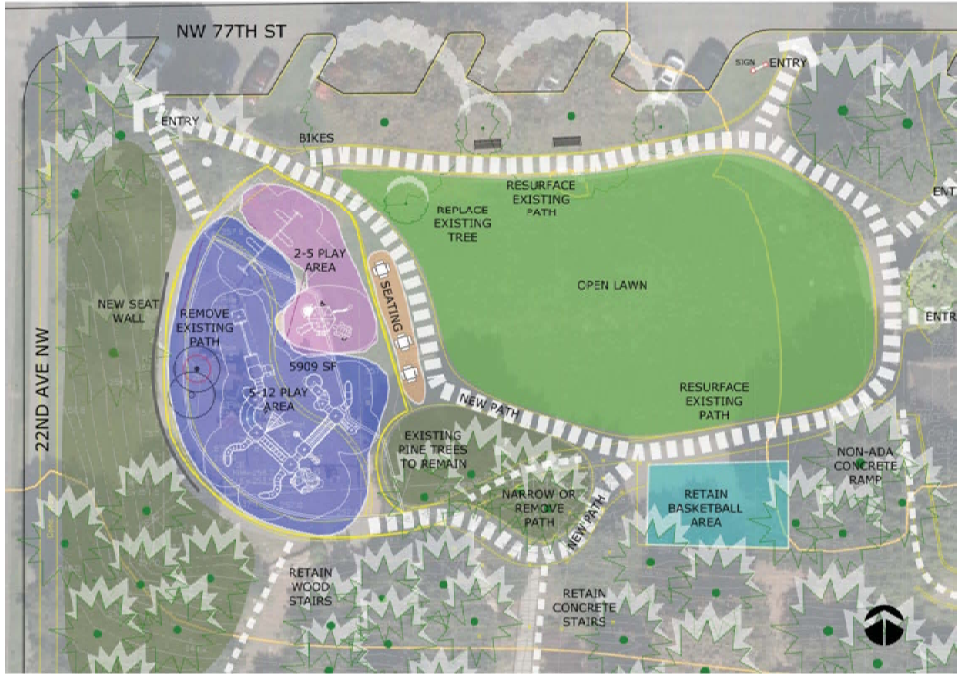


WALL & BERM BLOCK CONNECTION BETWEEN LAWN & PLAY



OPEN LAWN





CONCEPT A

COMMON FEATURES

- LOOP PATH AROUND LAWN
- EXPAND EXISTING PLAY AREA TO PROVIDE PLAY & SWINGS FOR AGES 2-5 & 5-12
- REMOVE RETAINING WALL AND BERM TO BETTER CONNECT WITH OPEN LAWN
- CREATE PLAZA WITH TABLES & STROLLER PARKING
- RETAIN SEATING ALONG WEST EDGE TO PROVIDE SUPERVISION ALONG SLOPE
- RESURFACE PATHWAYS TO MEET ADA
- RETAIN EXISTING BASKETBALL COURT
- REROUTE PATH AROUND EXISTING PINE TREES
- ADD ROCKS TO SOUTH NATURE SLOPE TO ENHANCE NATURE PLAY
- RETAIN ENGINEERED WOOD SAFETY SURFACE DUE TO EXTENSIVE PINE NEEDLES
- INSTALL BIKE RACK AND NEW BENCHES

CONCEPT A

- EXPAND PLAY AREA BY REMOVING WEST LOOP PATH AND 35' OF LAWN
- 70% BIGGER AND WIDER; ALLOW FOR MORE FLEXIBILITY & INNOVATION FOR EQUIPMENT DESIGN
- REALIGN PATHWAY AND INSTALL SMALL PLAZA ALONG EAST EDGE OF PLAY AREA
- ADD CONCRETE SEAT WALL ALONG WEST EDGE
- RETAIN NARROW PATH THROUGH PINES FOR SCOOTER PLAY



CONCEPT C

CONCEPT B

CONCEPT B

- EXPAND PLAY AREA TO EAST CREATING STRONG CONNECTION TO LAWN
- ADD 2470 SF FOR SEPARATED AGE, EXPANDED PLAY, & SWINGS
- RETAIN WEST LOOP FOR EXERCISE AND PLAY
- ADD PATHWAY AND PLAZA ON EAST SIDE OF PLAY FOR SEATING/PICNIC OPPORTUNITIES AND CIRCULATION
- PROVIDE FIXED PICNIC/GAME TABLE NEAR OPEN LAWN.

CONCEPT C

- EXPAND PLAY AREA TO EAST CREATING STRONG CONNECTION TO LAWN
- ADD 1420 SF FOR TO ALLOW SMALL STRUCTURE FOR AGES 2-5
- ADD PLAZA BETWEEN WEST LOOP AND PLAY AREA FOR SEATING/PICNIC
- PLAZA ON WEST HAS LIMITED CONNECTION TO LAWN AND EXPOSURE TO STREET
- RETAIN EXISTING LOCUST TREE
- SMALLER SIZE OF PLAY AREA, AND LIMITED CHOICE FOR PLAY EQUIPMENT DESIGN DUE TO MINIMUM SAFETY ZONE.









Presented By



A PLAYCORE Company



www.gametime.com

LOYAL HEIGHTS - OPTION 1 - VIEW A

800.235.2440
Representative: Gary Max

Presented By



A PLAYCORE Company



www.gametime.com

LOYAL HEIGHTS - OPTION 1 - VIEW B

800.235.2440
Representative: Gary Max

Presented By



A PLAYCORE Company



www.gametime.com

LOYAL HEIGHTS - OPTION 2 - VIEW A

800.235.2440
Representative: Gary Max

Presented By



A PLAYCORE Company



www.gametime.com

LOYAL HEIGHTS - OPTION 2 - VIEW B

800.235.2440
Representative: Gary Max



BURKE DESIGN
NUNP-2369





BURKE DESIGN
NUNP-2438

