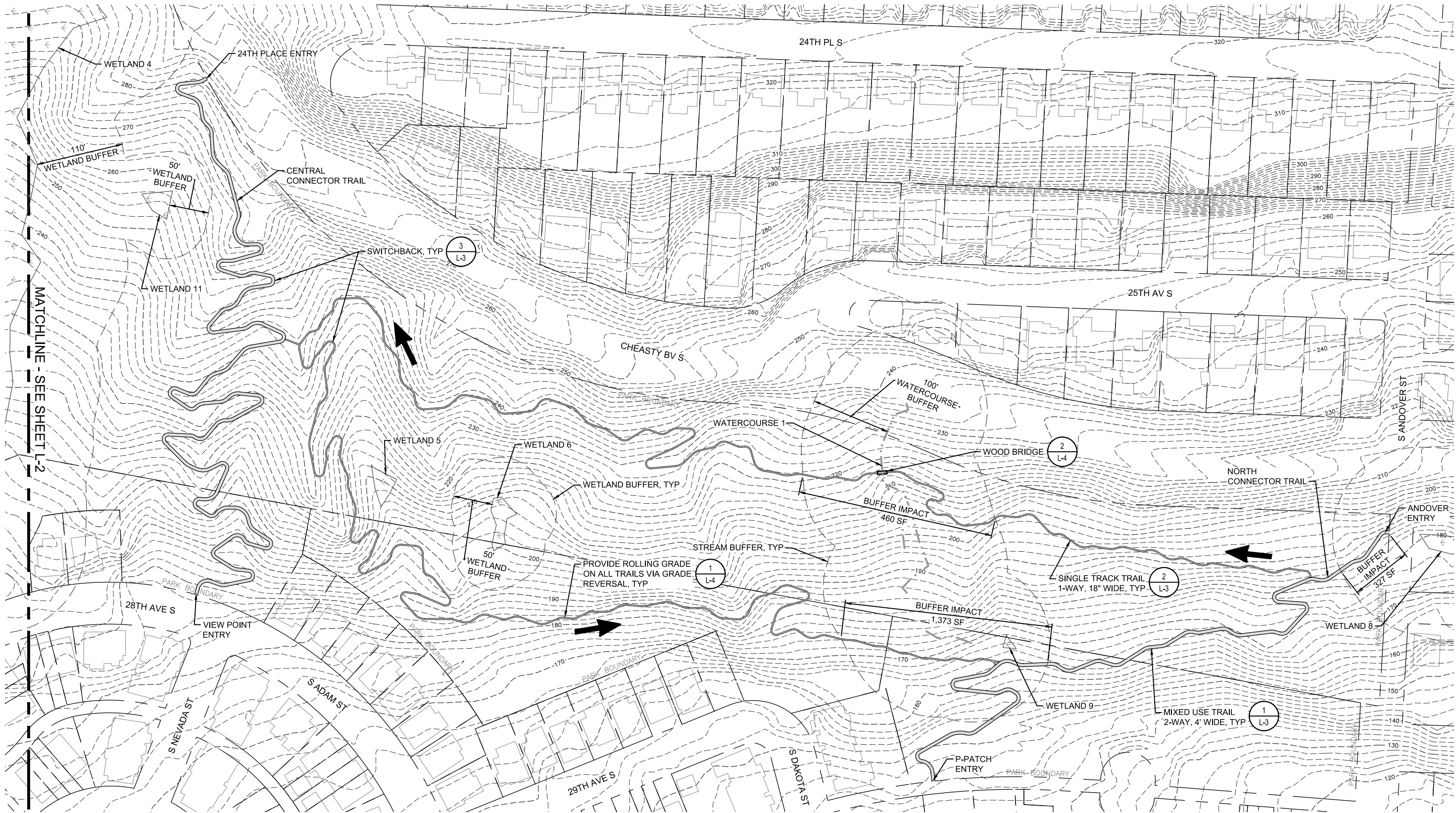


\\sra-granberg-9142018 1:10:13 PM - U:\PROJECTS\SEATTLE\40744.01 - Cheasty Trail Environmental Review\03 CAD\Drawings\1 NORTH LOOP PLAN.dwg



>>>>CAUTION - CALL 811<<<<
UTILITY NOTIFICATION CENTER
BEFORE YOU DIG!
WWW.CALL811.COM

Also, verify all underground utilities not located by the 811 service by using a commercial location service and call SPR Inspection Request Line (206) 684-7034.

7		
6		
5		
4		
3		
2		
1	TRAIL REVISION	7/20/2018
NO.	REVISION - AS BUILT	DATE

REVIEWED: PARK ENGINEER DATE

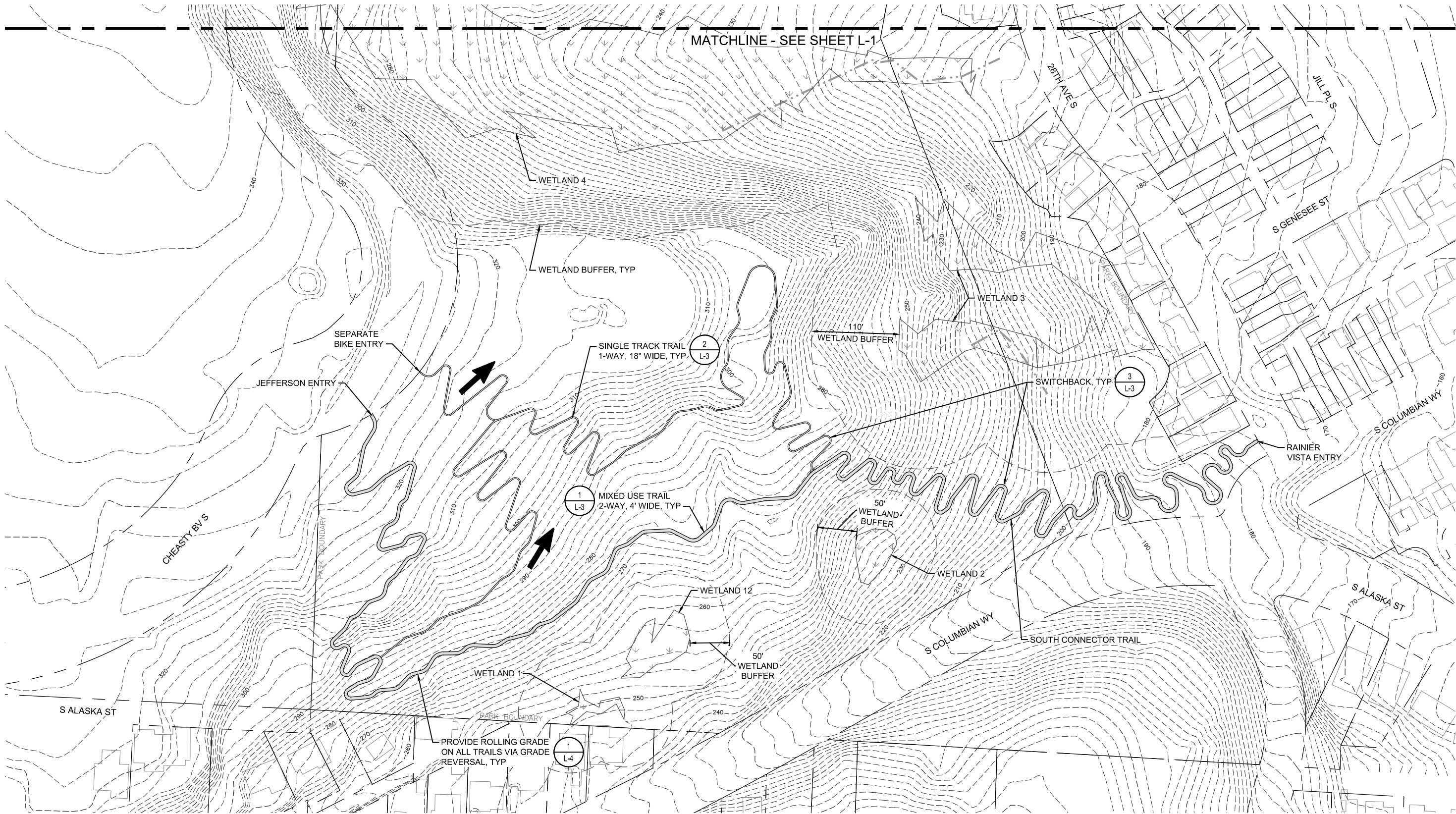
All work done in accordance with the City of Seattle Standard Plans and Specifications in effect on the date shown above, and supplemented by Special Provisions.



SEATTLE PARKS DEPARTMENT
CHEASTY TRAIL DESIGN
NORTH LOOP PLAN

DESIGNED	ABG	DATE	7/20/2018
DRAWN	ABG	SHEET	1 OF 4
CHECKED	PDA		L-1
ORDINANCE NO.	X		
CONTRACT NO.	X		
SCALE	AS SHOWN		

\\sra-grnberg-9142016 1:10:24 PM - U:\PROJECTS\SEA\14xxx\140744.01_Cheasty Trail Environmental Review\03 CAD\Drawings\2 SOUTH LOOP PLAN.dwg



>>>>CAUTION - CALL 811<<<<
UTILITY NOTIFICATION CENTER
BEFORE YOU DIG!
WWW.CALL811.COM

Also, verify all underground utilities not located by the 811 service by using a commercial location service and call SPR Inspection Request Line (206) 684-7034.

7		
6		
5		
4		
3		
2		
1	TRAIL REVISION	7/20/2018
NO.	REVISION - AS BUILT	DATE

REVIEWED: PARK ENGINEER DATE

All work done in accordance with the City of Seattle Standard Plans and Specifications in effect on the date shown above, and supplemented by Special Provisions.

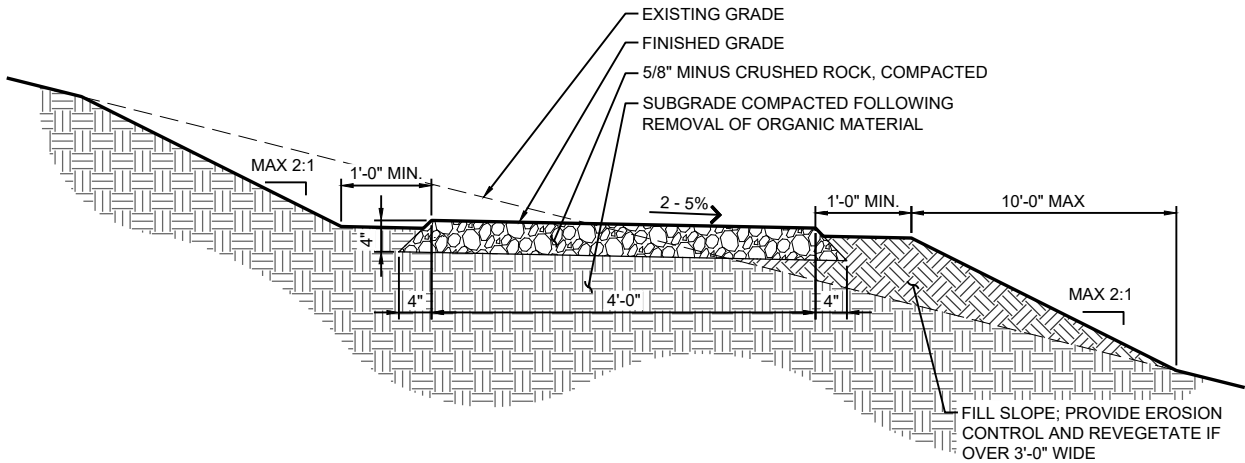


SEATTLE PARKS DEPARTMENT
CHEASTY TRAIL DESIGN
SOUTH LOOP PLAN



DESIGNED	ABG	DATE	7/20/2018
DRAWN	ABG		
CHECKED	PDA		
ORDINANCE NO.	X		
CONTRACT NO.	X		
SCALE	AS SHOWN		
		SHEET	2 OF 4
			L-2

\\sra-granberg-9142616 1:10:27 PM - U:\PROJECTS\SEA\14xxxx\0140744.01 - Cheasty Trail Environmental Review\03 CAD\Drawings\Trail Details and Notes.dwg



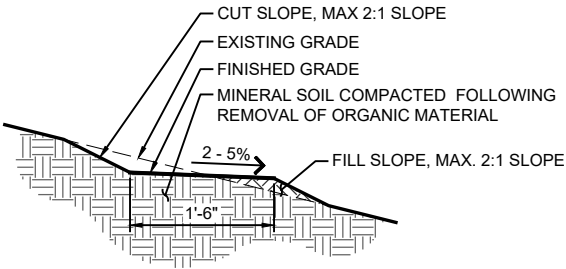
DETAIL
MIXED USE TRAIL
SCALE: NTS

1

1

L-1

L-2



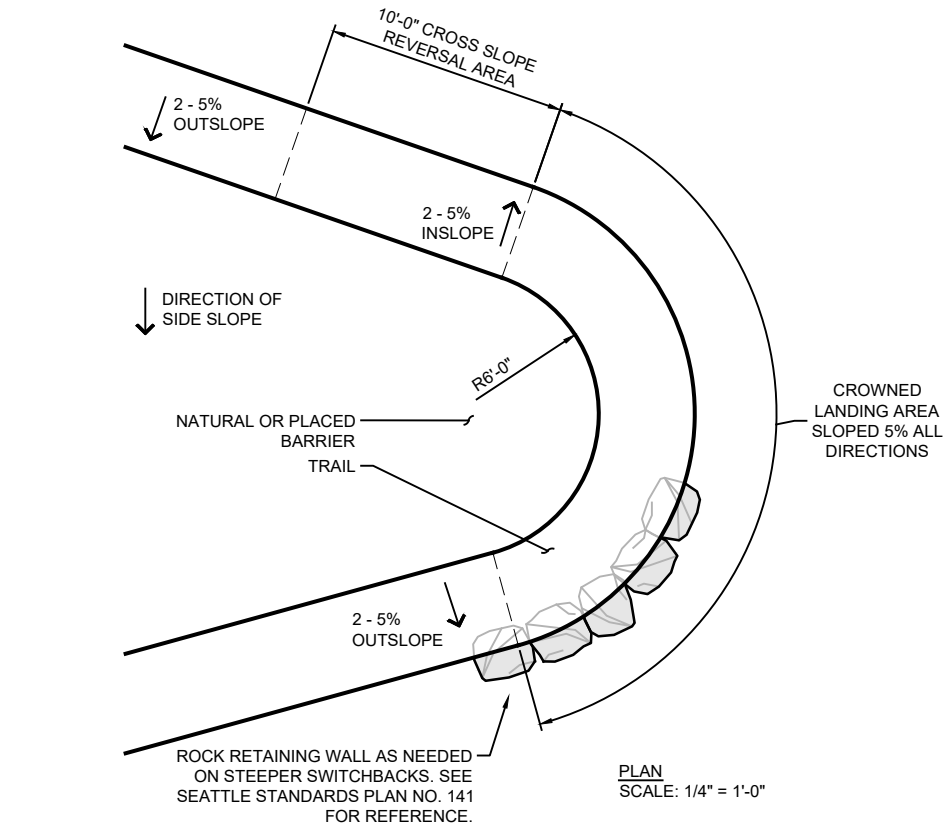
DETAIL
SINGLE TRACK TRAIL
SCALE: NTS

2

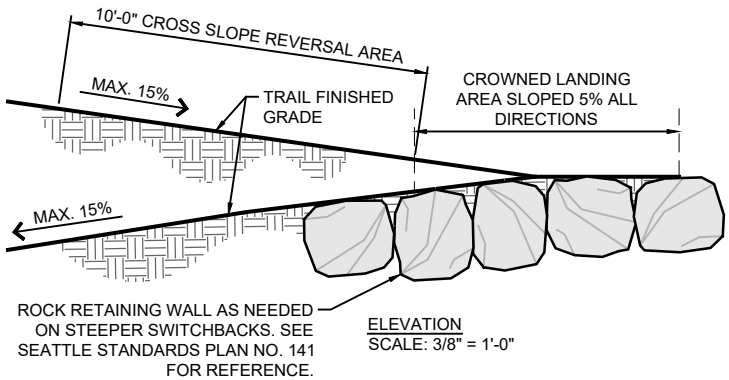
2

L-1

L-2



PLAN
SCALE: 1/4" = 1'-0"



ELEVATION
SCALE: 3/8" = 1'-0"

DETAIL
SWITCHBACK
SCALE: NTS

3

3

L-1

L-2

- NOTES
- WALK AND FLAG CORRIDORS TO FIELD FIT TRAILS ON SITE. RECLAIM OLD TRAIL WHERE POSSIBLE.
 - WHEN LOCATING TRAIL ALIGNMENT USE THE "HALF RULE": THE TRAIL GRADE SHOULD BE LESS THAN HALF THE SLOPE OF THE HILLSIDE.
 - LOCATE GRADE REVERSALS ABOVE ALL TURNS.
 - BUILD SWITCHBACKS ON FLATTEST AREA AVAILABLE TO EACH SWITCHBACK LOCATION. TO DISCOURAGE SHORTCUTS, WRAP SWITCHBACKS AROUND AN OBSTACLE (ROCK OR TREE) WHERE POSSIBLE.
 - ALL TRAIL CONSTRUCTION SHALL INCLUDE STANDARD CLEARING LIMITS AS FOLLOWS: BRUSH AND BRANCHES 36" ABOVE GROUND LEVEL SHALL BE REMOVED TO A HEIGHT OF 8" WITHIN 36" OF THE TRAIL. ALL VEGETATION BELOW 36" HEIGHT SHALL BE CUT BACK TO THE WIDTH OF THE TRAIL. FALLEN LOGS SHALL BE CUT FLUSH AT THE EDGE OF THE TRAIL.
 - FOLLOWING CLEARING WITHIN THE DESIGNED TRAIL CORRIDOR, REMOVE ALL ROOTS AND ORGANIC MATERIAL TO A DEPTH OF 6" PRIOR TO IMPORTING TRAIL AGGREGATE. ESTABLISH DESIGN CROSS-SLOPE IN SUBGRADE MATERIALS.
 - IMPORT TRAIL AGGREGATE FOLLOWING DEPARTMENTAL APPROVAL OF PREPARED TRAIL BED. TRAIL AGGREGATE SHALL BE 5/8" MINUS CRUSHED ROCK UNLESS OTHERWISE SPECIFIED. PLACE MATERIAL UNIFORMLY, PROVIDING FULL DESIGN WIDTH ACROSS SURFACE. TAPER EDGES AT A 45° ANGLE INTO THE SUBGRADE, LEAVING APPROX. 1" OF TREAD ABOVE GRADE. WHERE DESIRED, PROVIDE COMPLETE MECHANICAL COMPACTION, WHERE THIS IS IMPRACTICAL OR IMPOSSIBLE, COMPACT BY HAND WITH AN APPROPRIATELY WEIGHTED IMPLEMENT.
 - FOLLOWING IMPORT AND PLACEMENT OF TREAD AGGREGATE AND CONSTRUCTION OF DRAINAGE ELEMENTS OR OTHER SPECIFIED TRAIL COMPONENTS, PERFORM SITE RESTORATION AND REVEGETATION AS DIRECTED BY THE DESIGNATED REPRESENTATIVE OF THE DEPARTMENT OF PARKS AND RECREATION.
 - SLOPE OR CROWN TREAD AS DIRECTED. TRAIL TREADS TO BE OUTSLOPED FOR POSITIVE DRAINAGE.
 - FULL OR PARTIAL BENCH CONSTRUCTION OF TRAILS DEPENDS ON SIDE SLOPE FOR TRAIL AREA. SEE SEATTLE STANDARD DETAIL 32 60 00.19 FOR REFERENCE.

>>>>CAUTION - CALL 811<<<<
UTILITY NOTIFICATION CENTER
BEFORE YOU DIG!
WWW.CALL811.COM

Also, verify all underground utilities not located by the 811 service by using a commercial location service and call SPR Inspection Request Line (206) 684-7034.

7		
6		
5		
4		
3		
2		
1	TRAIL REVISION	7/20/2018
NO.	REVISION - AS BUILT	DATE

REVIEWED: PARK ENGINEER DATE

All work done in accordance with the City of Seattle Standard Plans and Specifications in effect on the date shown above, and supplemented by Special Provisions.



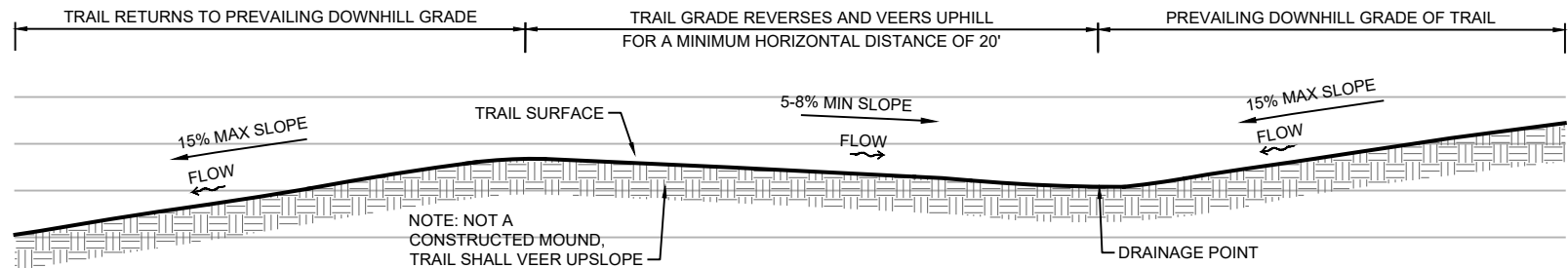
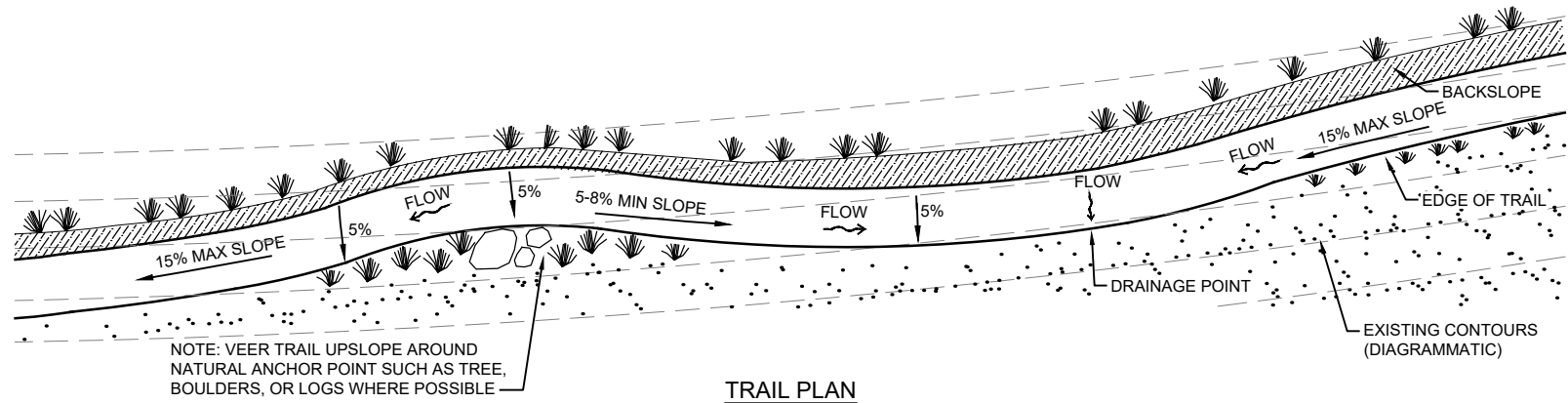
SEATTLE PARKS DEPARTMENT
CHEASTY TRAIL DESIGN
TRAIL DETAILS & NOTES

DESIGNED	ABG
DRAWN	ABG
CHECKED	PDA
ORDINANCE NO.	X
CONTRACT NO.	X
SCALE	AS SHOWN

DATE 7/20/2018

SHEET 3 OF 4

L-3



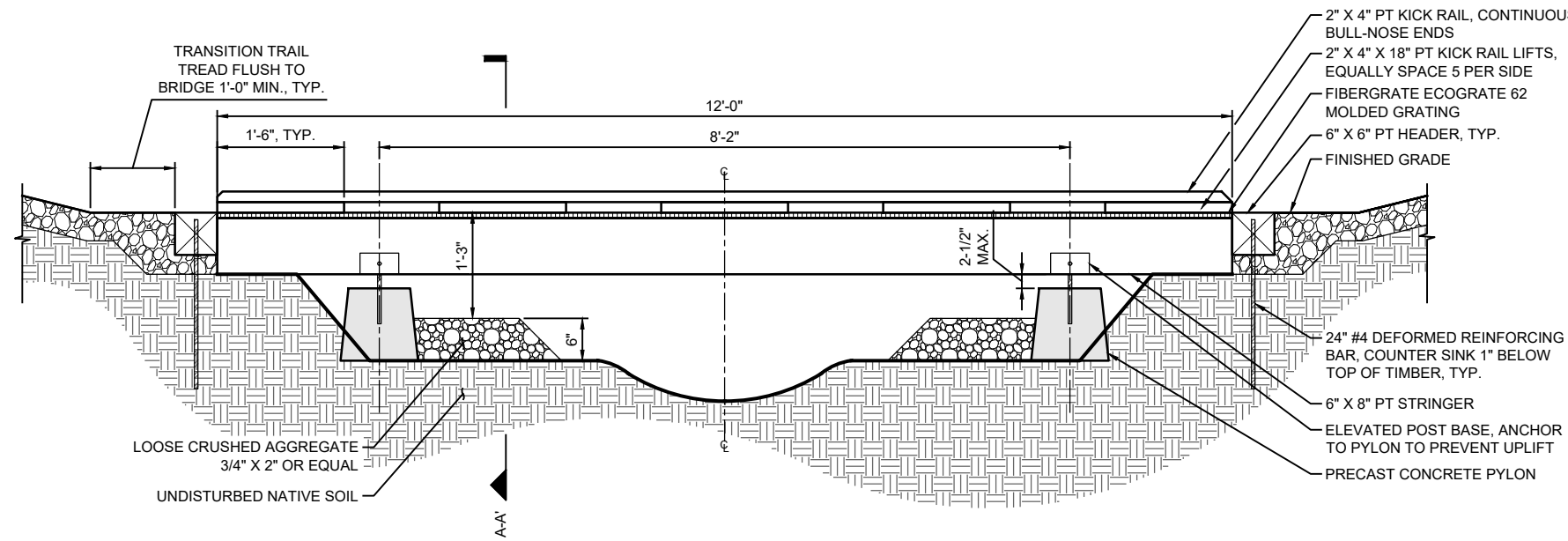
DETAIL

GRADE REVERSAL

SCALE: NTS

1 L-1

1 L-2



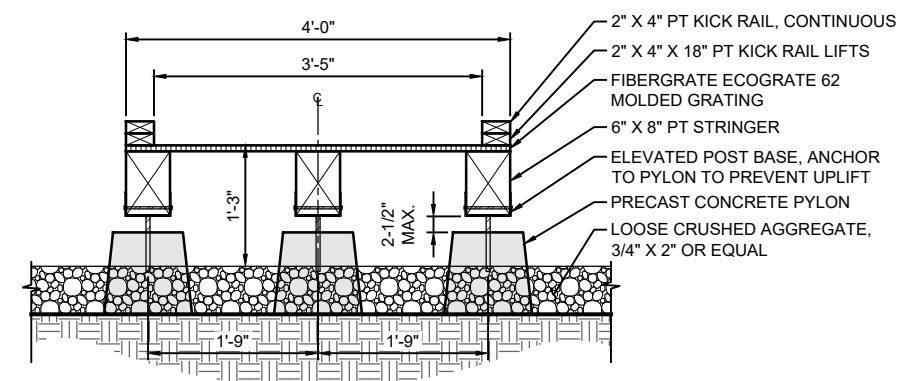
DETAIL

WOOD BRIDGE

SCALE: NTS

2 L-1

2 L-2



SECTION A-A'

>>>>CAUTION - CALL 811<<<<
UTILITY NOTIFICATION CENTER
BEFORE YOU DIG!
WWW.CALL811.COM

Also, verify all underground utilities not located by the 811 service by using a commercial location service and call SPR Inspection Request Line (206) 684-7034.

7		
6		
5		
4		
3		
2		
1	TRAIL REVISION	7/20/2018
NO.	REVISION - AS BUILT	DATE

REVIEWED:	PARK ENGINEER	DATE
All work done in accordance with the City of Seattle Standard Plans and Specifications in effect on the date shown above, and supplemented by Special Provisions.		



5309 Shilshole Ave. NW
Seattle, WA 98107
P: (206) 789-9658
F: (206) 789-9684



SEATTLE PARKS DEPARTMENT

CHEASTY TRAIL DESIGN

TRAIL DETAILS

DESIGNED	ABG	DATE	7/20/2018
DRAWN	ABG	SHEET	4 OF 4
CHECKED	PDA		
ORDINANCE NO.	X		L-4
CONTRACT NO.	X		
SCALE	AS SHOWN		