

2020-2025

King County Parks, Recreation, Trails, and Open Space Levy

**King County
Parks & Recreation Division
Department of Natural Resources & Parks**

August 2019



King County

PARKS

Your Big Backyard



2002

**Parks Business
Transition Plan**



2004

KC O&M levy



2008

**KC O&M renewal
AND OS/Trails/Zoo
levies**



2014

**KC replacement
levy (combines 2
levies)**



2020

**KC Parks, Recreation,
Trails and Open
Space Levy**

Parks Levy Goals



EXISTING PARKS & TRAILS

Take care of King County's existing system of parks and trails, ensuring the system remains clean, safe and open.



INCREASE ACCESS

Make parks and recreation opportunities more accessible for all King County residents to enjoy.



REGIONAL TRAILS

Improve regional trails and mobility, ensuring that essential connections are completed and existing trails are maintained.



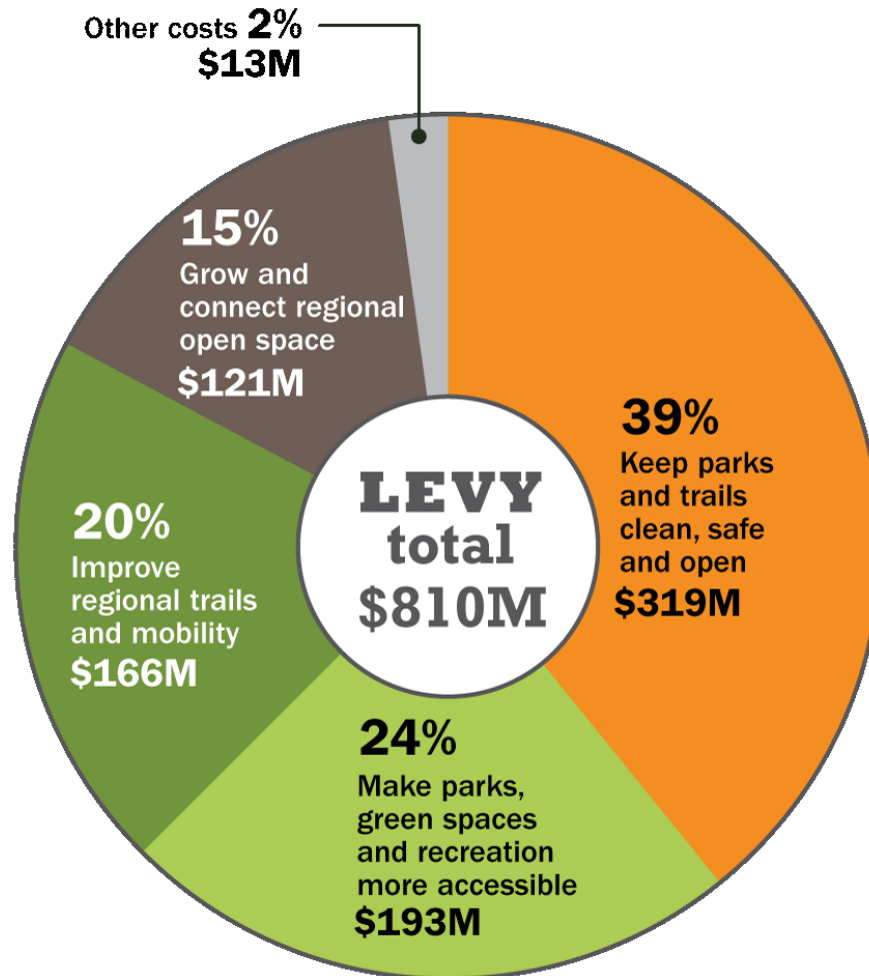
OPEN SPACE

Grow and connect regional open space and natural lands, protecting habitat important for fish and wildlife and providing recreation opportunities.

This levy will:

- Keep King County's 200 parks, 175 miles of regional trails & 28,000 acres of open space and trails clean, safe and open.
- Keep pace with our growing region by expanding and improving access to parks and recreation for all King County residents.





note: the sum of sections is greater than levy total due to rounding

**Generates an estimated
\$810 million over the
next six years to:**

- Expand and connect regional trails and open space
- Improve access to green space and recreation
- Keep the county's parks and trails clean, safe and open

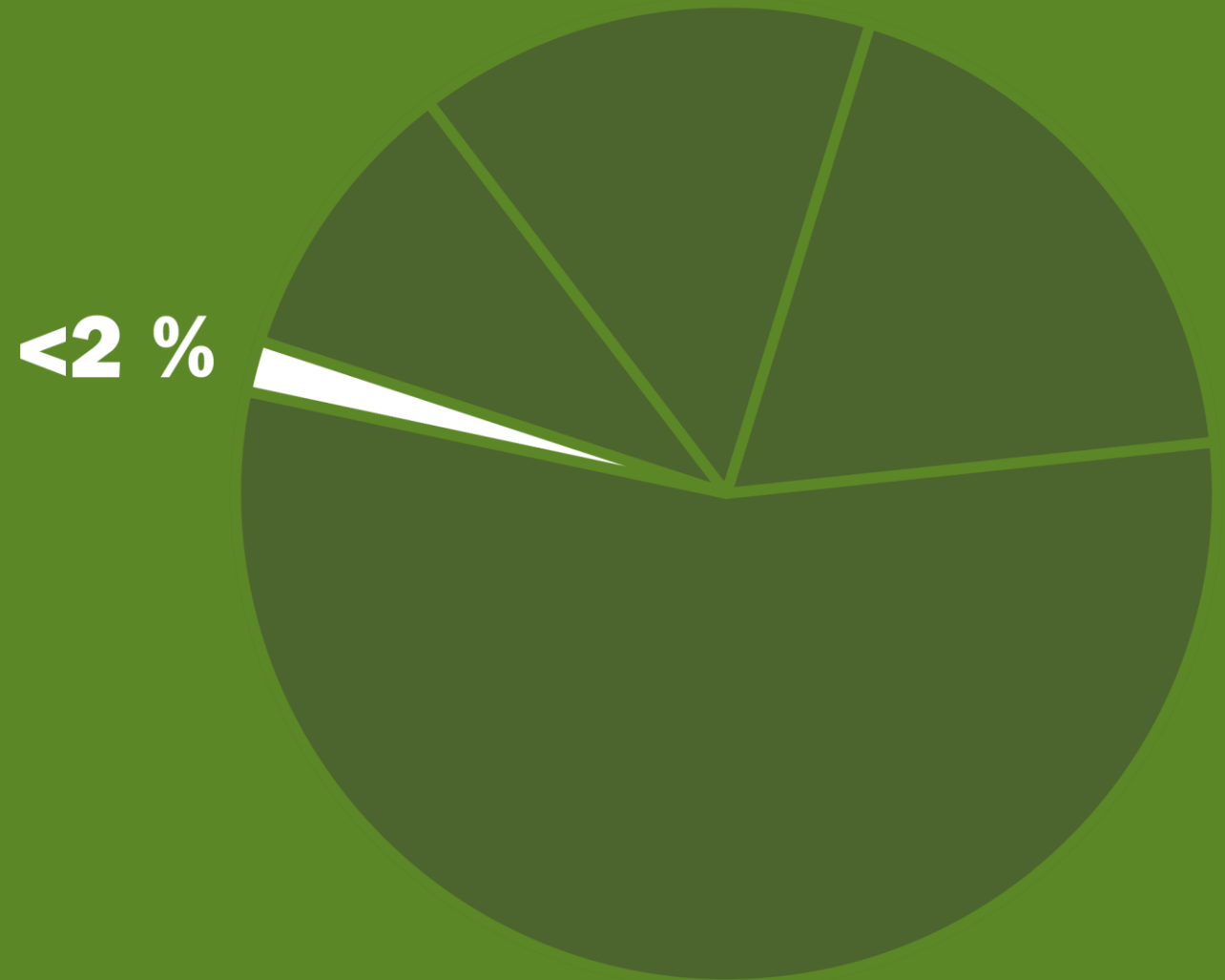
**Costs 18.32 cents per
\$1,000 of assessed
property value**

OR

**This is \$7.60 per month
– which is \$2.25 more
than what residents
currently pay for a home
valued at \$500,000.**

What does this mean for a homeowner?

Average Property Taxes for
Households across King County
(city dependent)



Keep our parks and trails clean safe and open

\$318.5 Million | 39%

Operations and Maintenance: \$277M

- 200 Parks
- 175 Miles of regional trails
- 28,000 Acres and growing of open space
- 215 Miles of backcountry trails
- 155,000 Acres of conservation easements

Active Recreation Repair & Renovation: \$41.5M

- 5 Facilities/sites
- 11 Synthetic turf ballfield replacements
- 6 Play area rehabilitations
- 5+ Backcountry trail rehabilitations
- 3 Trailhead access improvements
- 3 Sport court and grass ballfield replacements





Make parks, green spaces and recreation more accessible \$192.6 Million | 24%

New & Expanded Grant Programs

Community Partnerships & Grants: \$9M

For partners to design, build or program new and enhanced public recreation facilities on County or city-owned lands

Targeted Equity Grants: \$10M

To increase access to and use of recreation facilities in communities that are currently underserved or for people with disabilities

City Capital and Open Space Acquisition Grants: \$25M

For parks capital improvements and land acquisition

Public Pools Grants: \$44M

For capital needs at new or existing aquatic facilities

Make parks, green spaces and recreation more accessible cont.

\$192.6 Million | 24%

Pass Through Funding

KC Cities and Towns : \$60M

- For any local parks and recreation purpose
- Listened to our cities and increased funding by ~70%

Woodland Park Zoo: \$36M

Continue environmental education and conservation programs

Seattle Aquarium: \$8M

Towards capital construction of the Ocean Pavilion



Improve regional trails & mobility

\$165.6 Million | 20%

Expanding & Connecting Regional Trails

- East Lake Sammamish Trail
- East Lake Sammamish Trail - Redmond Light Rail Extension
- Eastside Rail Corridor
- Foothills Trail
- Green to Cedar Trail
- Green River Trail Extension-North
- Green River Trail in Kent
- Interurban to Burke-Gilman Trail Connection
- Interurban South – major maintenance investments
- Interurban South connection in Milton
- Kirkland Green Loop Trail
- Lake to Sound Trail
- Soos Creek Trail
- Wayne Connector to the Burke-Gilman Trail



Grow and connect regional open space

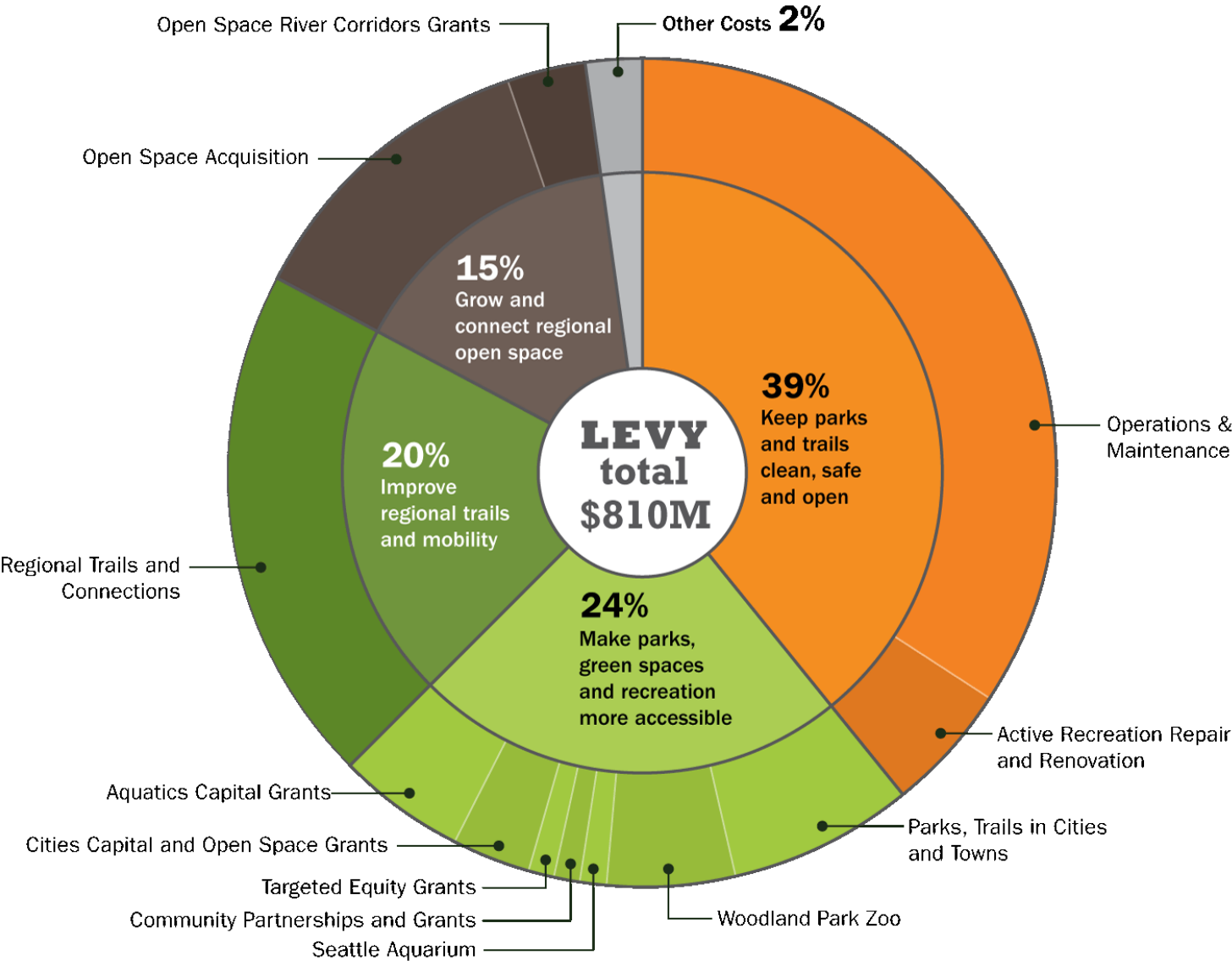
\$120.5 Million | 15%

King County Open Space Acquisition/ Land Conservation: \$98.5M

- Supports passive recreational uses, regional trails and open space lands
- Water access acquisition along Burke-Gilman trail

Open Space River Corridors Grants: \$22M

To protect, restore, and provide recreation opportunities in river corridors and green spaces



Investments Summary

Keep parks and trails clean, safe and open	\$318.5 M
Operations & Maintenance	\$277 M
Active Recreation Repair	\$41.5 M
Make parks, green spaces & recreation more accessible	\$192.6 M
Aquatics Capital	\$44 M
Cities Capital and Acquisition	\$25 M
Targeted Equity	\$10 M
Community Partnerships	\$9.6 M
Parks in Cities/Towns (pass thru)	\$60 M
Woodland Park Zoo	\$36 M
Seattle Aquarium	\$8 M
Improve regional trails & mobility	\$165.6 M
Grow and connect regional open space	\$120.5 M
Open Space Acquisition	\$98.5 M
Open Space River Corridors	\$22 M
Other costs	\$13 M
TOTAL	\$810.2 M



King County

PARKS

Your Big Backyard