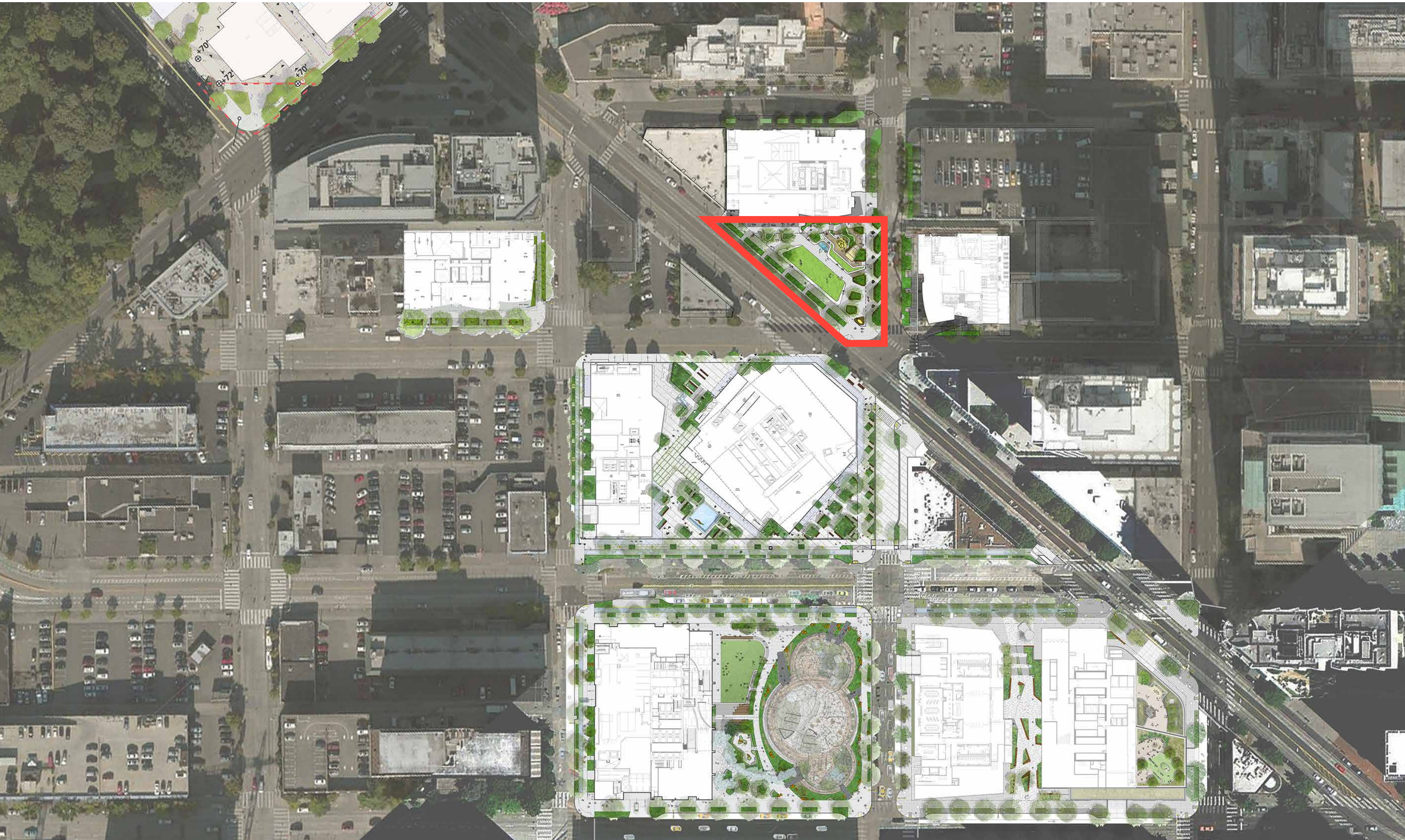


# Westlake & Lenora Park

Seattle Design Commission | December 4, 2014





# Project Background

Seattle Parks purchased property in December 2008 with intent to vacate alley.

Funding: Seattle Parks District and other TBD sources

Meetings have occurred with the following groups:

- Two Community Meetings held at the site
- Denny Triangle Community Association
- South Lake Union Community Council
- Downtown Seattle Families
- GID Development and Design Team
- Parks Proview
- Seattle Design Commission: Urban Design Merit

Going forward

- Continued alley vacation process
- Design, Documentation and Construction: TBD

## WESTLAKE & LENORA PARK DEVELOPMENT PROJECT

Seattle Parks and Recreation invites you to participate in the design of a new Westlake & Lenora park. This site located at 2100 Westlake Ave on the northeast corner of Westlake Ave and Lenora St was purchased to fill a green spaces gap in the neighborhood. Funding is currently available to pursue a schematic design for the park.

An alley exists between the park property and the adjacent tower development site. Parks is working with the adjacent developer to vacate the alley and bring mutual benefit to both parties.

Please join us for this initial meeting to learn about the proposed project, the partnering for alley vacation and to provide input for the park design. We'd like your ideas and feedback as we move forward.

PUBLIC  
MEETINGS

**MEETING #1: PROJECT BACKGROUND, DESIGN CONCEPTS & FEEDBACK**  
**TUESDAY, MAY 20, 2014 11:30 A.M. – 1:30 P.M.**  
**LOCATION: ON SITE. 2100 WESTLAKE AVE**  
(ALTERNATE RAIN LOCATION: 100 DEXTER AVE. SEATTLE PARKS AND RECREATION BOARD ROOM)

**MEETING #2: PREFERRED SCHEMATIC DESIGN PRESENTATION**  
**TUESDAY, JUNE 17, 2014**  
**TIME AND LOCATION TO BE DETERMINED.**

IF YOU REQUIRE ADDITIONAL INFORMATION  
OR SPECIAL MEETING ACCOMMODATIONS PLEASE CONTACT:  
Kim Baldwin, Project Manager, Seattle Parks and Recreation  
800 Maynard Ave. S. RDA Bldg, Suite 300, Seattle, WA 98134-1336  
206-615-0810 or kim.baldwin@seattle.gov

FOR PROJECT INFORMATION PLEASE VISIT:  
[www.seattle.gov/parks/projects/westlake\\_lenora/](http://www.seattle.gov/parks/projects/westlake_lenora/)

**YOU ARE  
ENCOURAGED TO  
ATTEND AND JOIN IN  
THE PLANNING FOR  
THIS COMMUNITY  
PARK.**

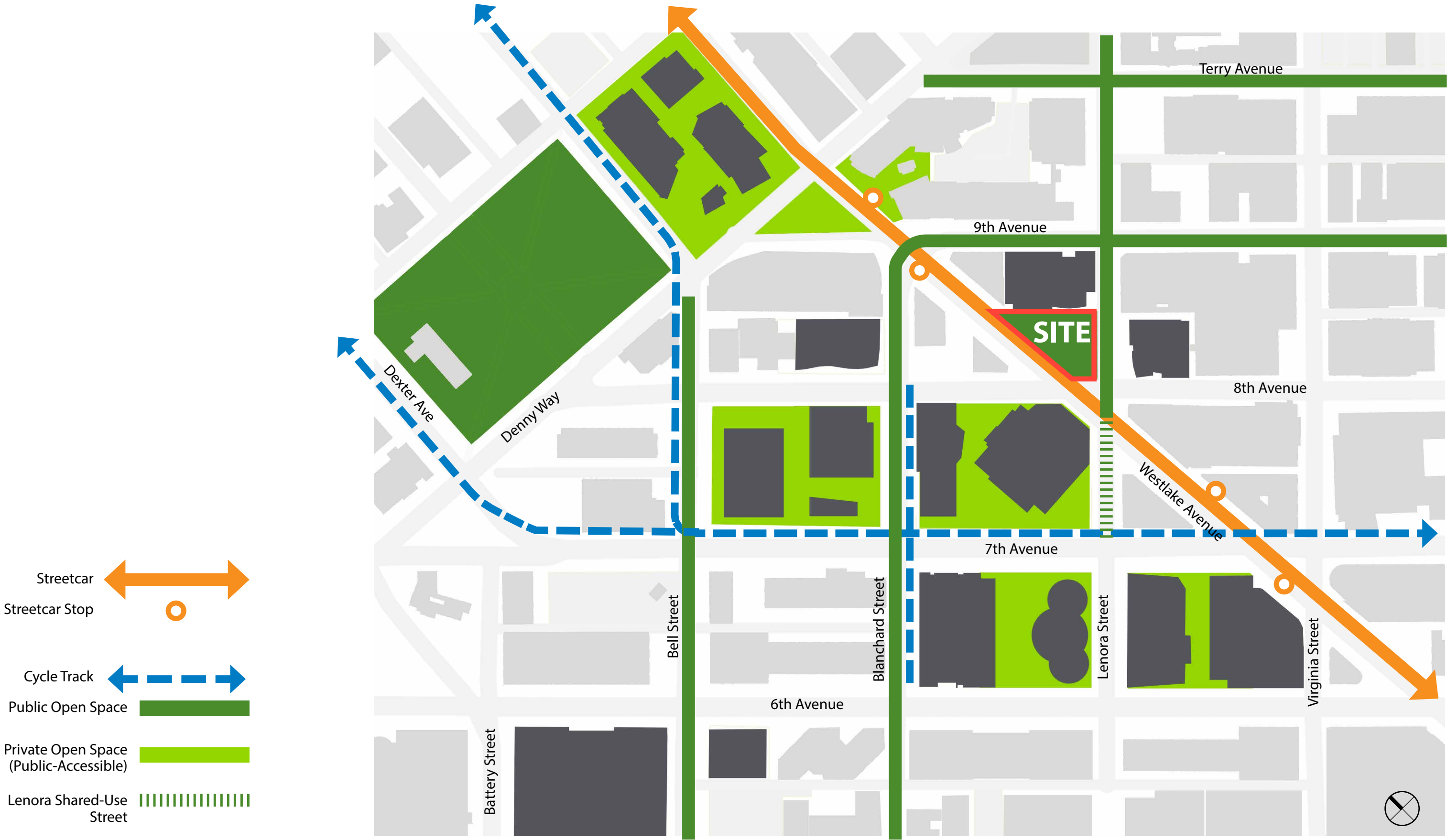


visit us at [seattle.gov/parks](http://seattle.gov/parks)





# Open Space Context

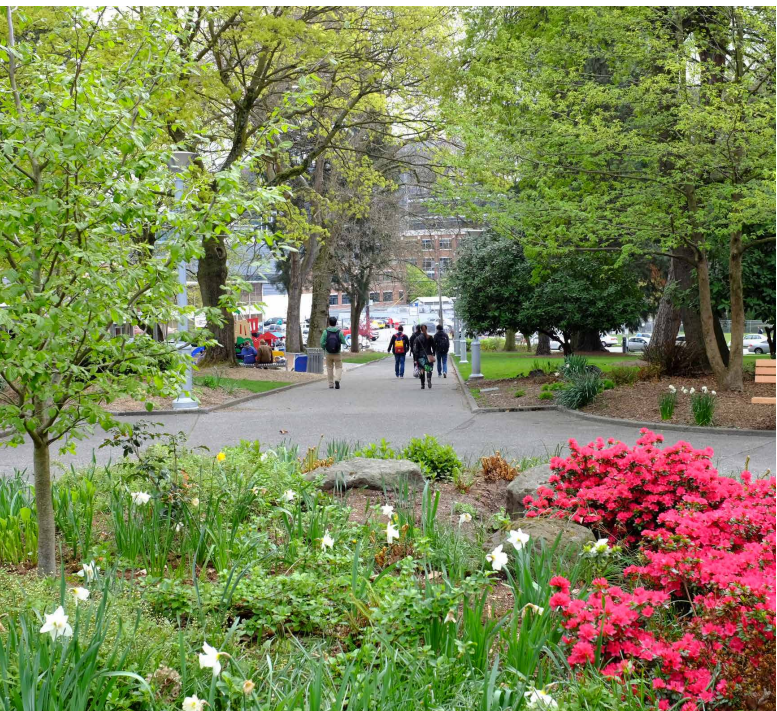




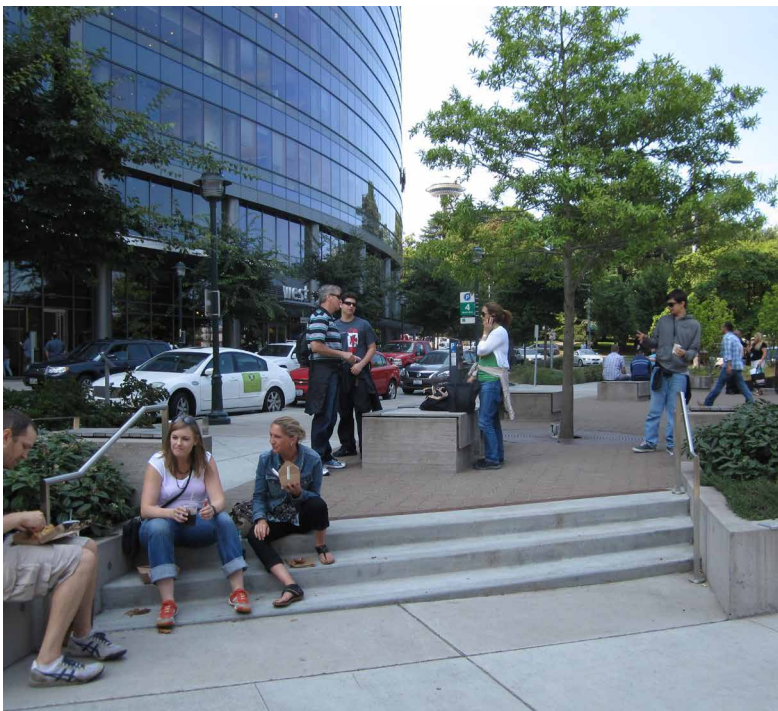




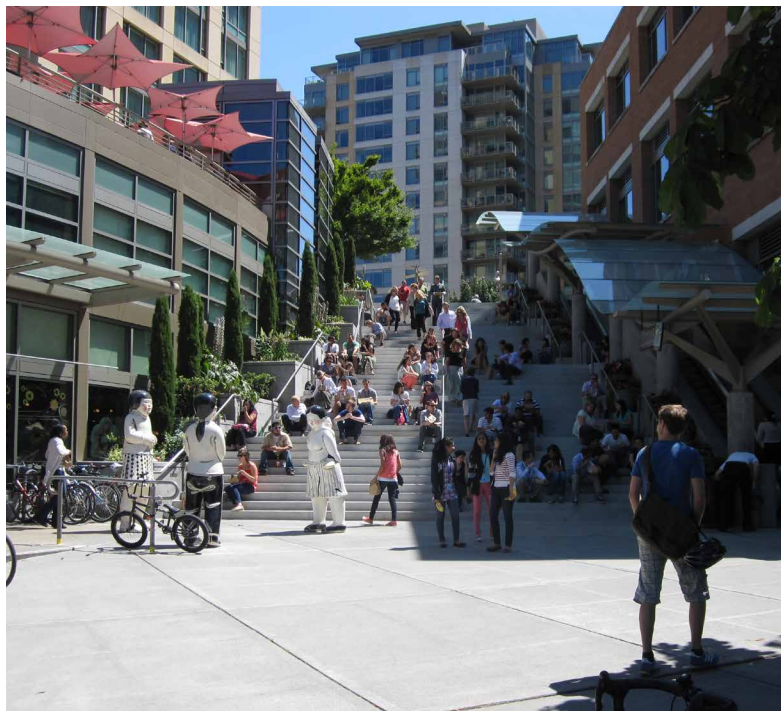
# Open Space Context



Denny Park



9th & Westlake Corner



2200 Westlake Stairs



Block 89



Terry Avenue Green Street



9th Avenue Green Street



Lenora Shared-Use Street



7th Avenue Cycle Track



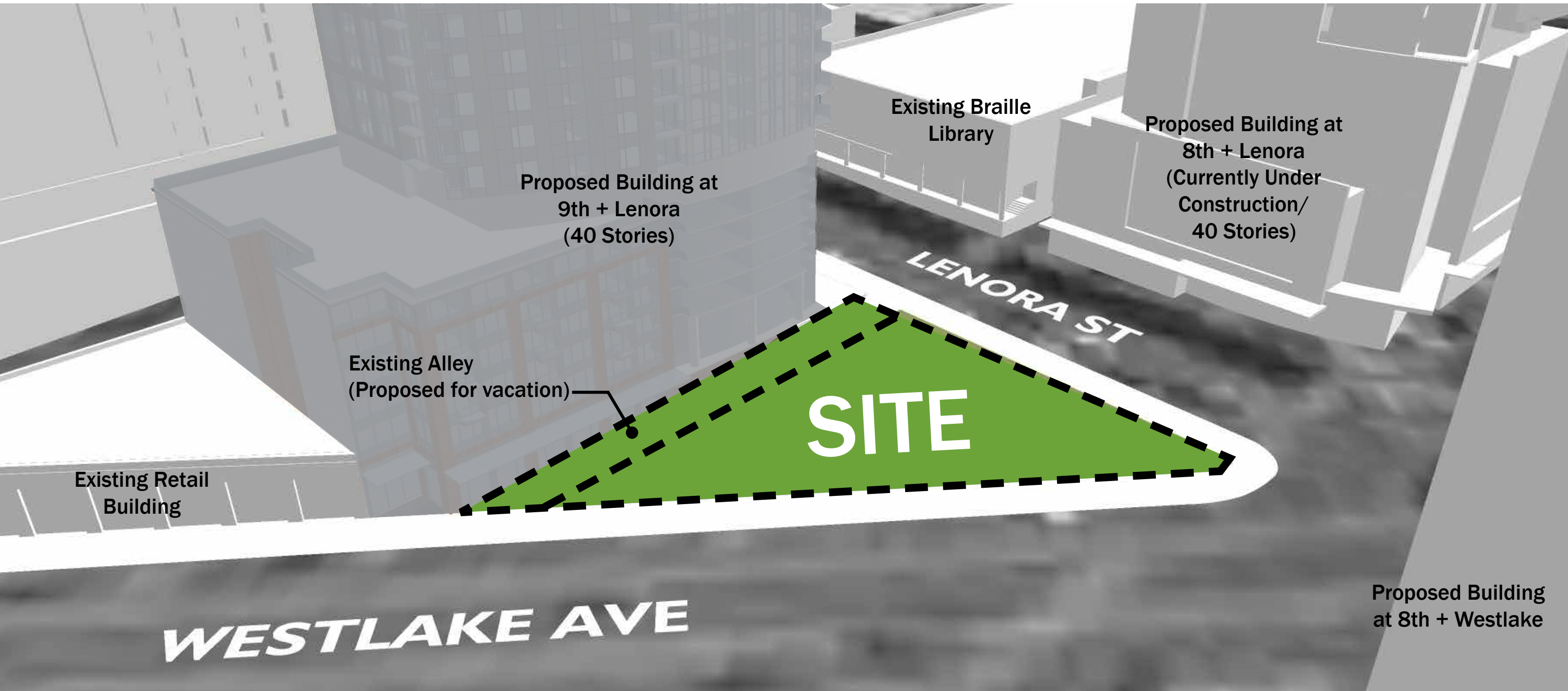
# Open Space Context



Amazon Rufus 2.0



Existing Site





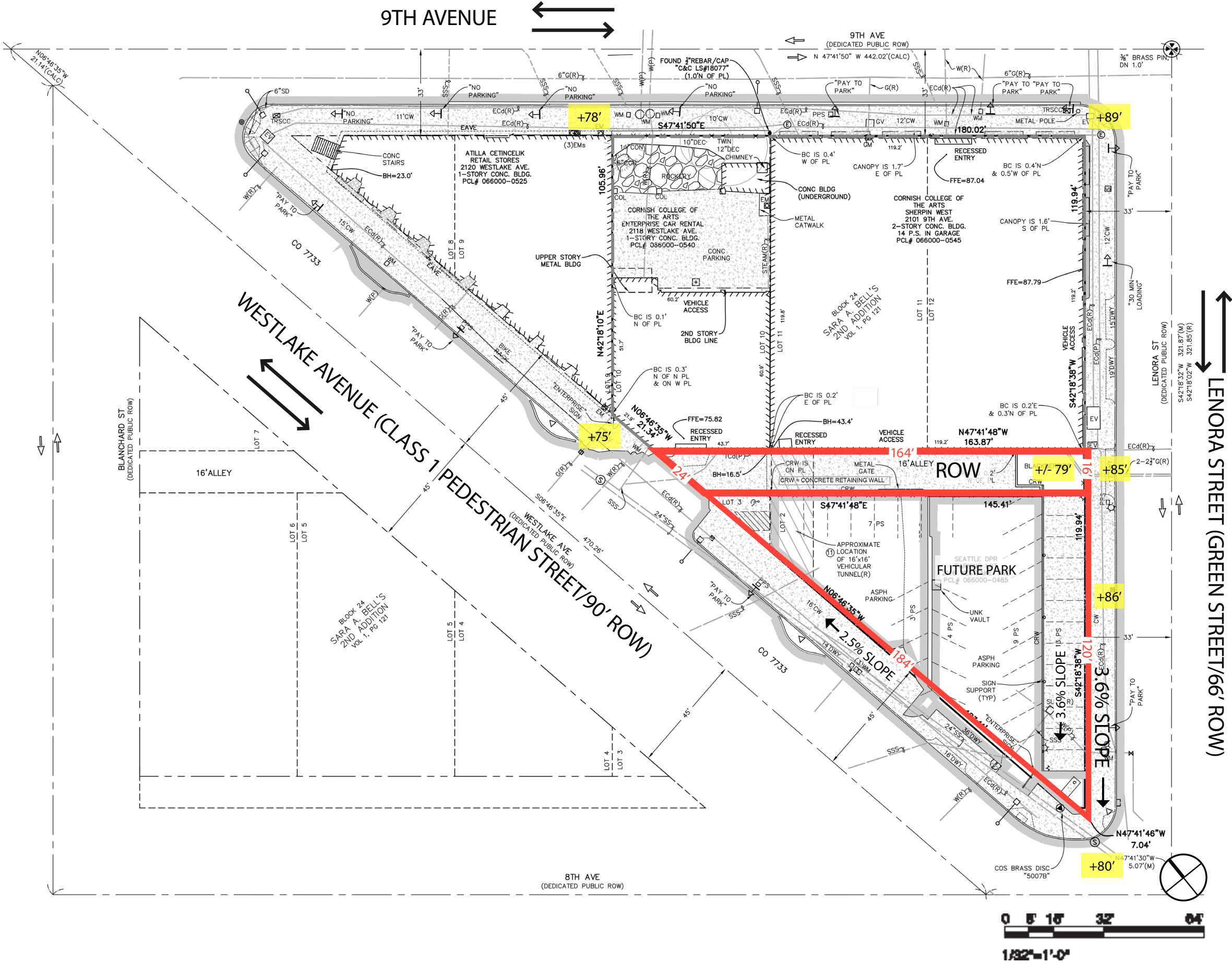
Existing Site

Parcels

Alley = 2,472 SF

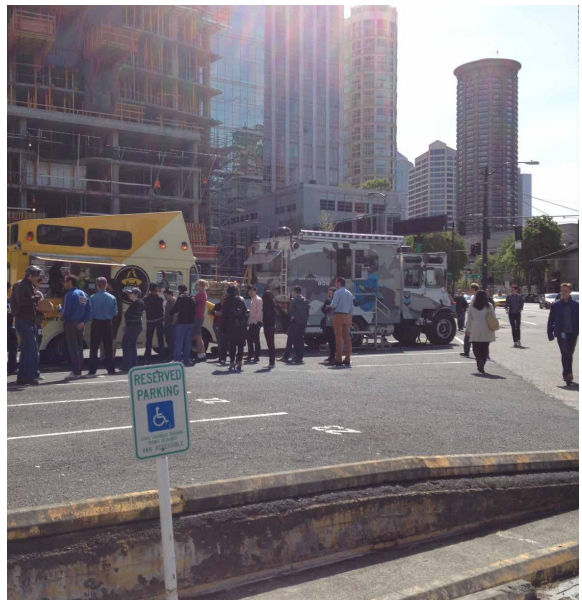
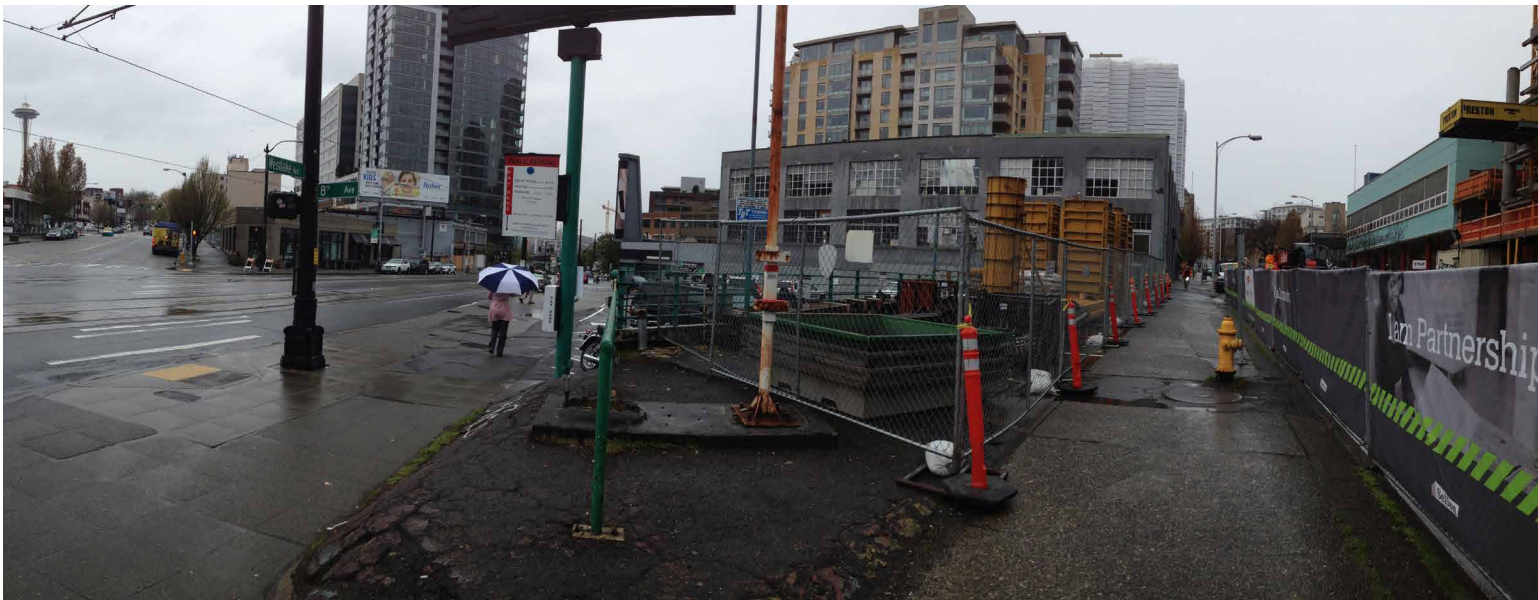
Park = 9,142 SF

Total = 11,616 SF



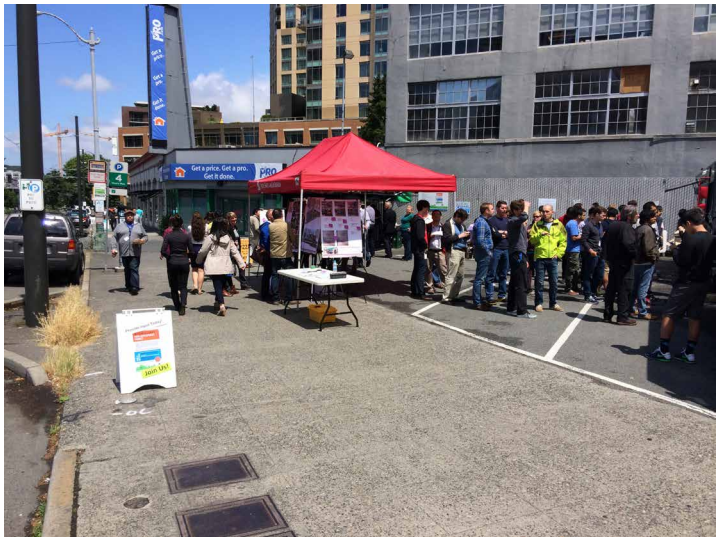


# Existing Site & History

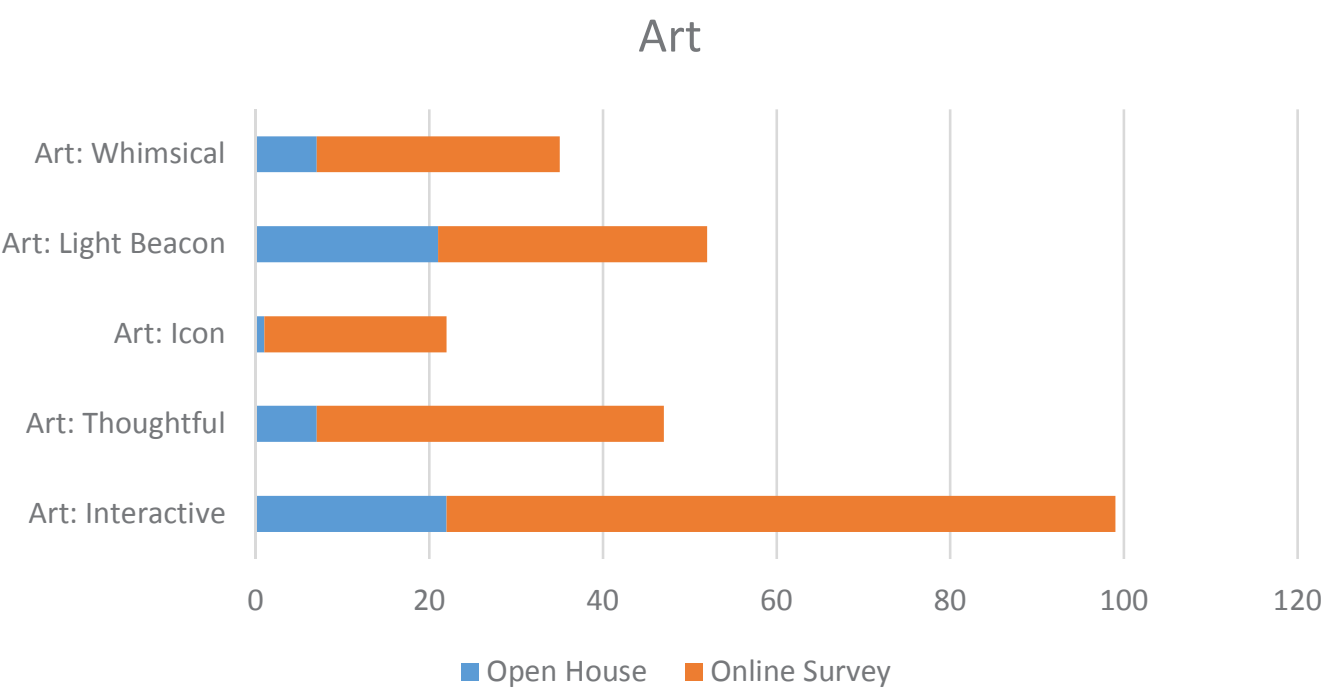
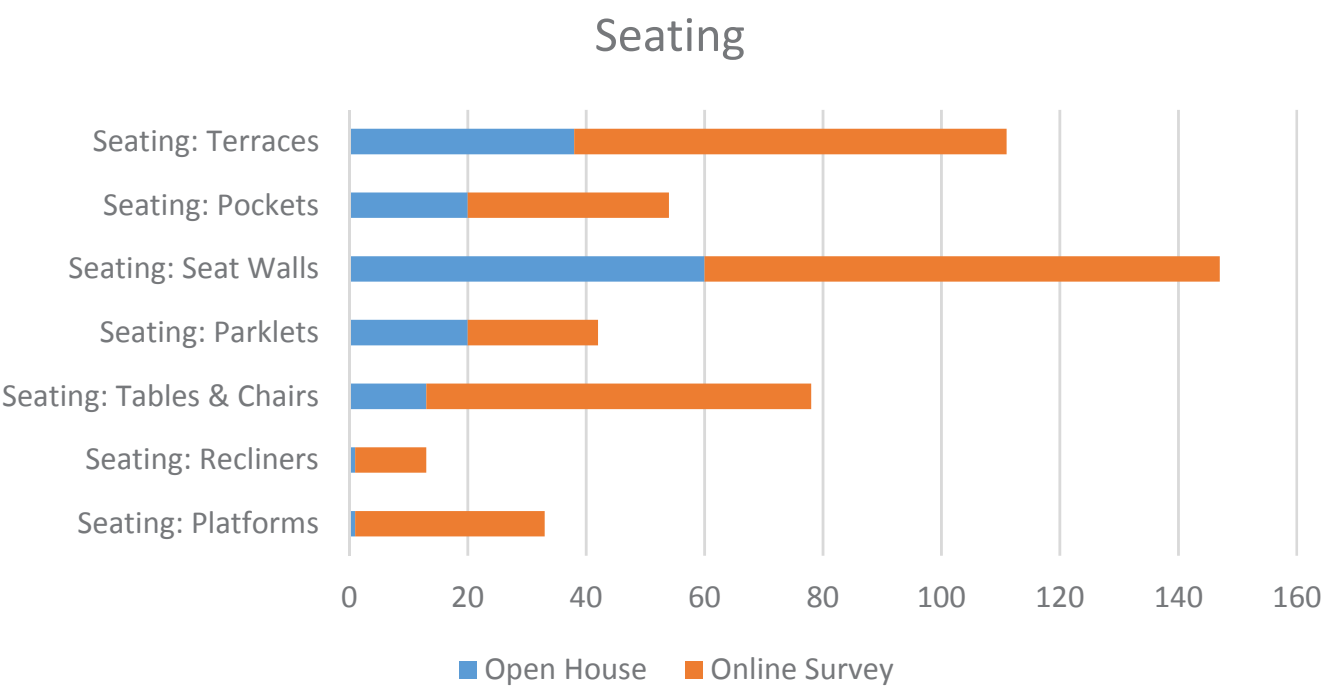




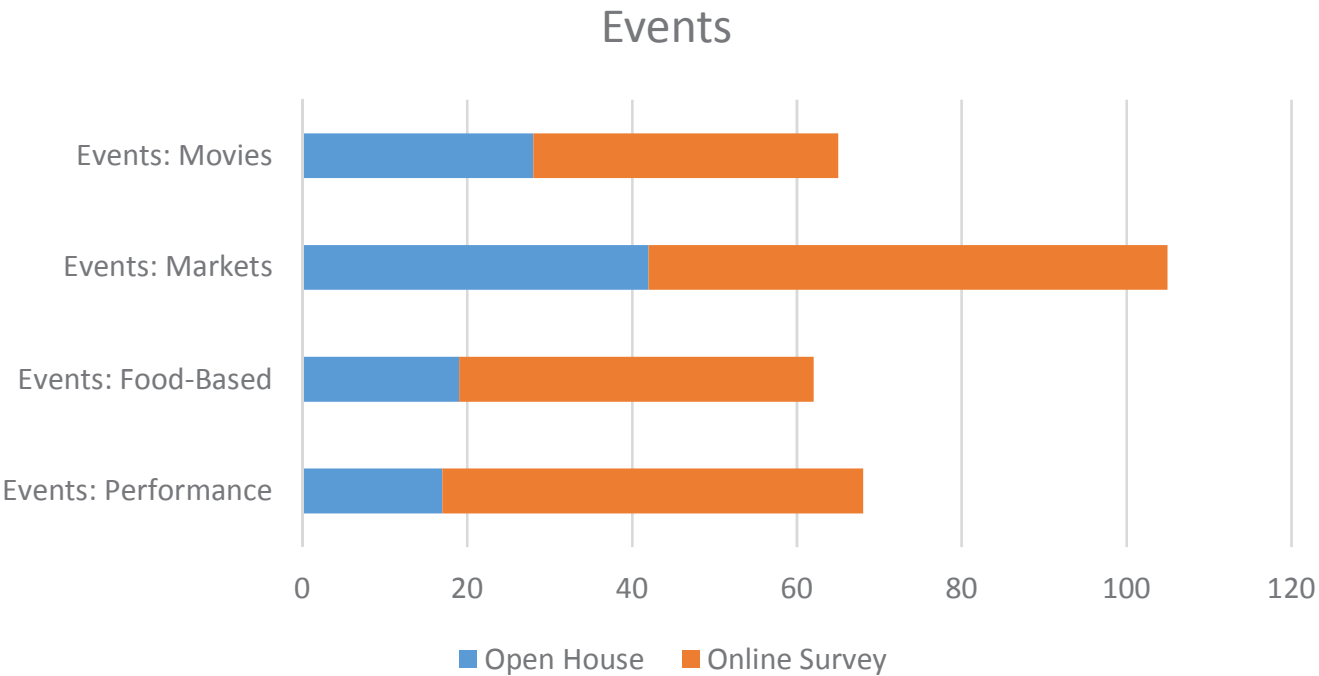
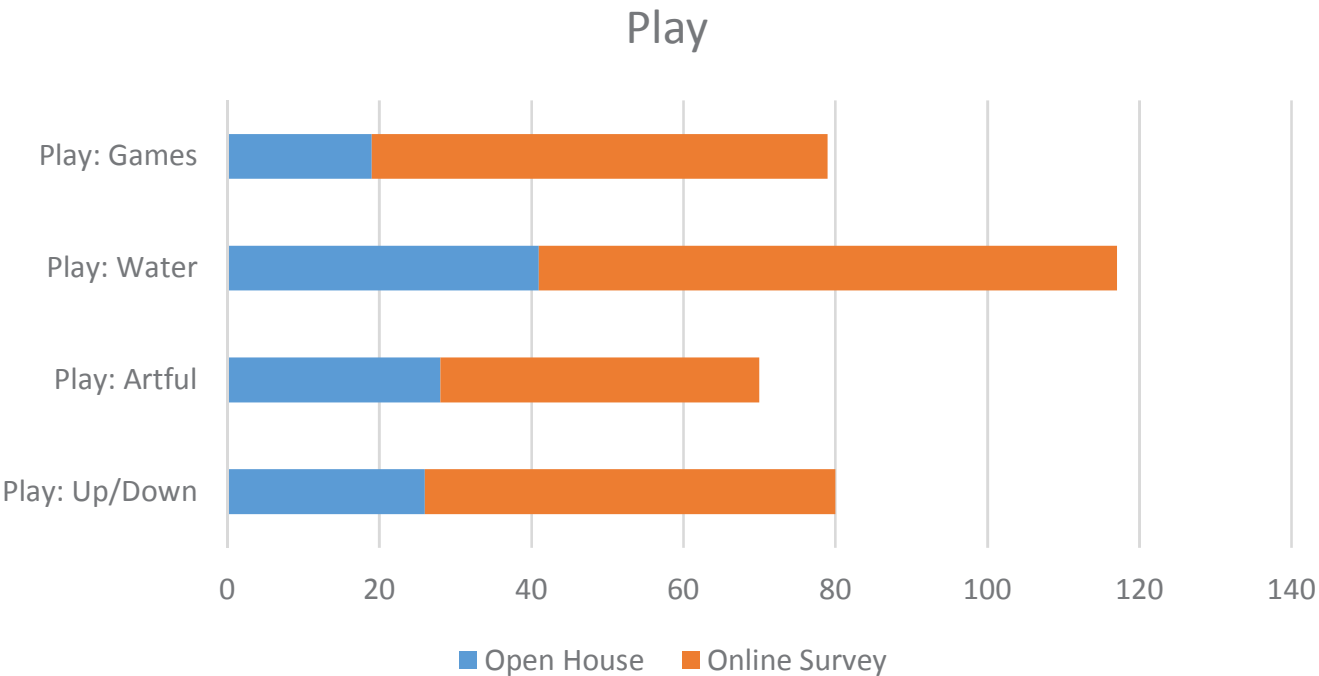
# Public Process



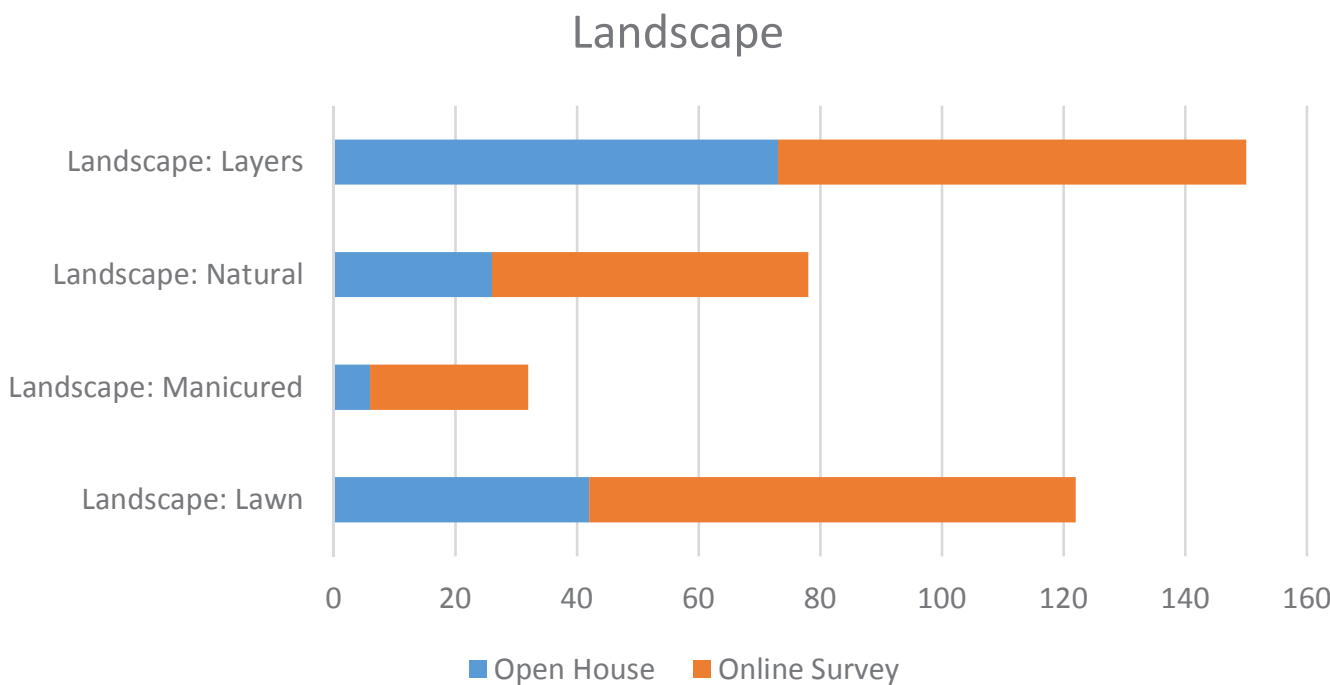
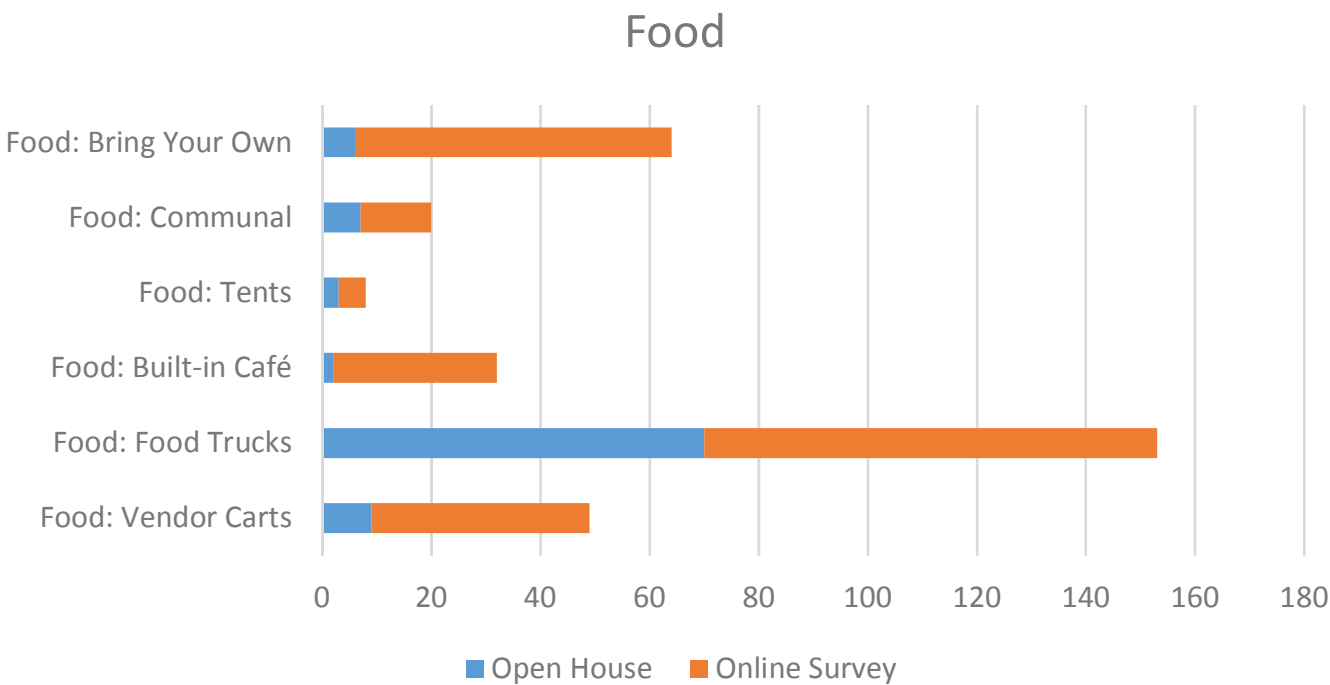
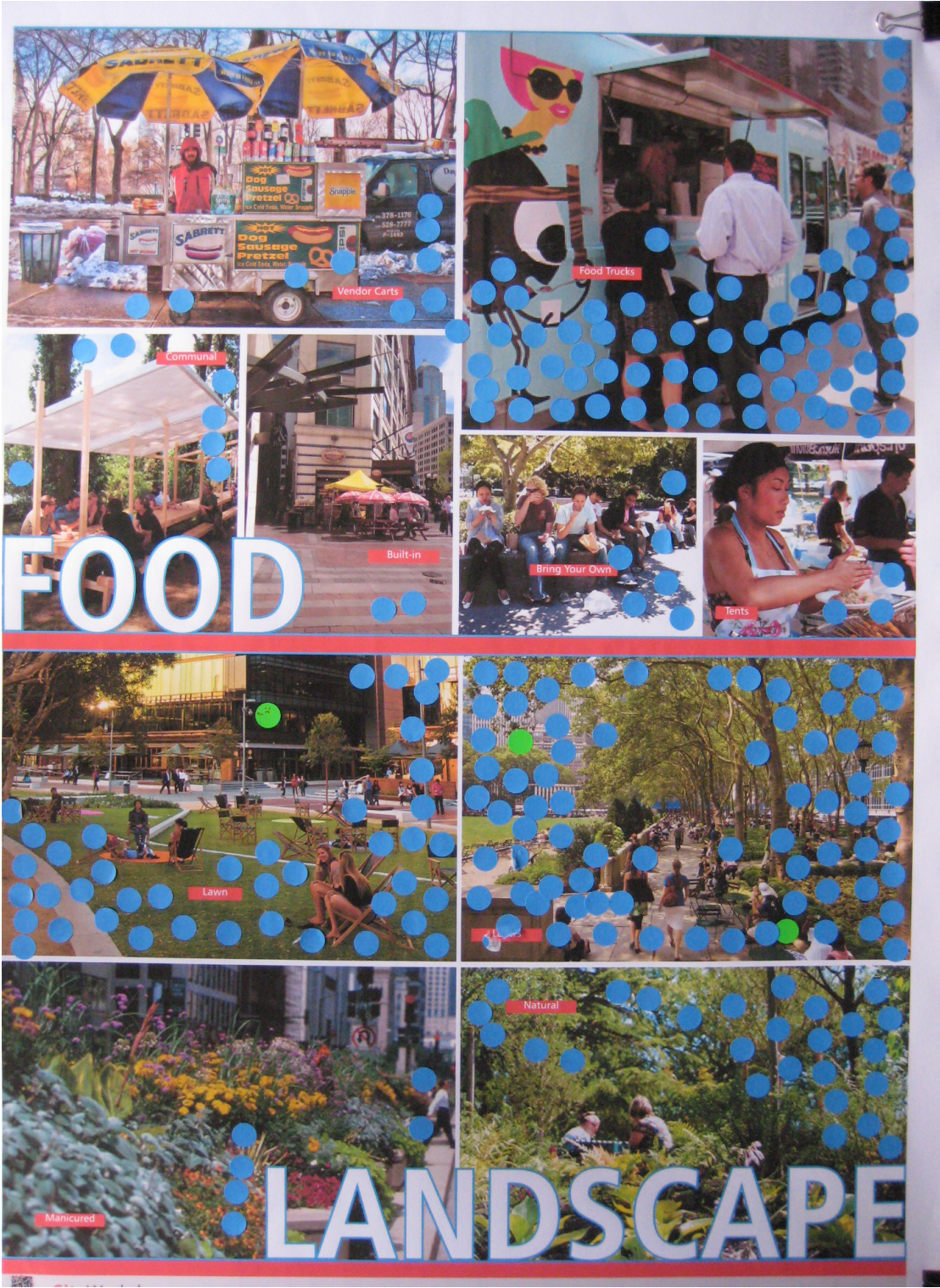






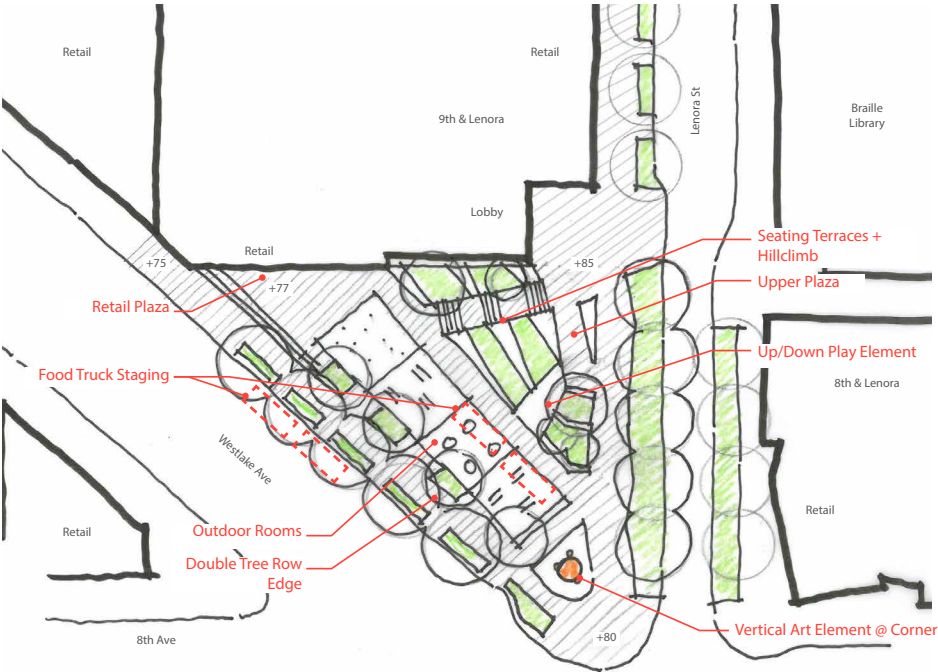




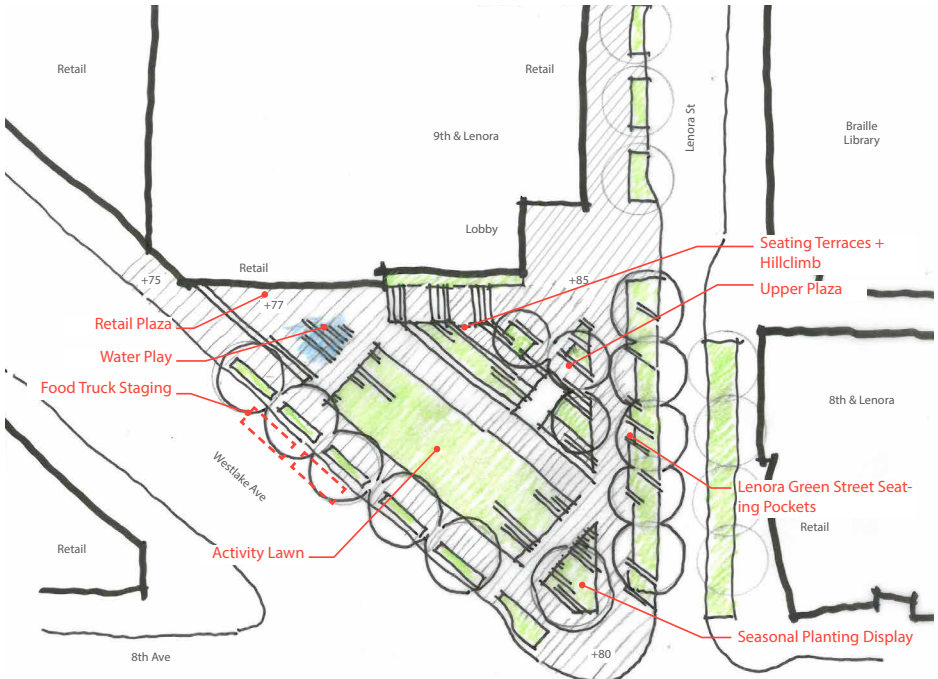




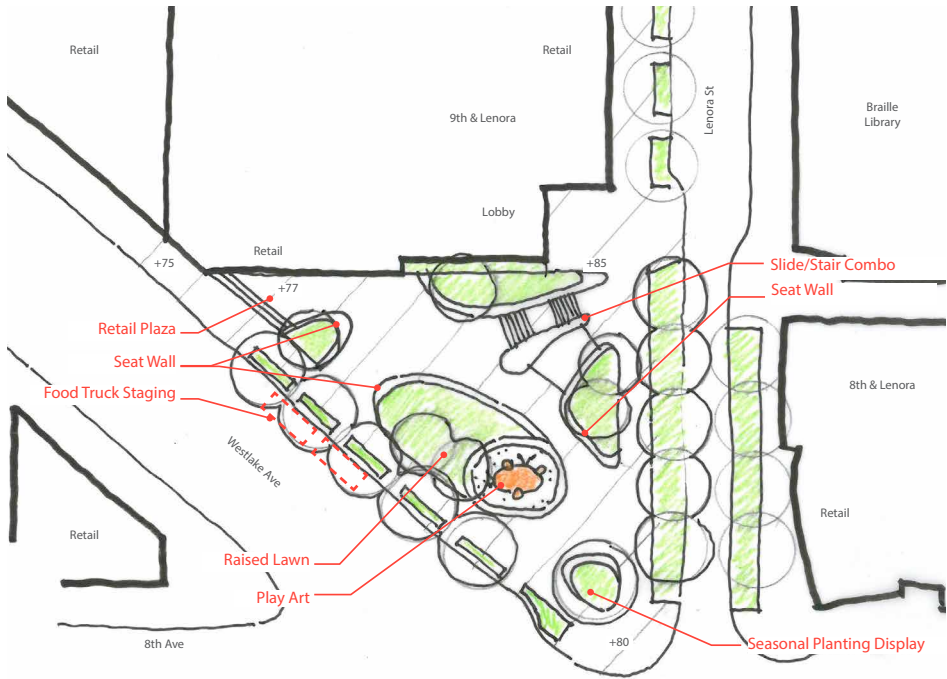
Public Process



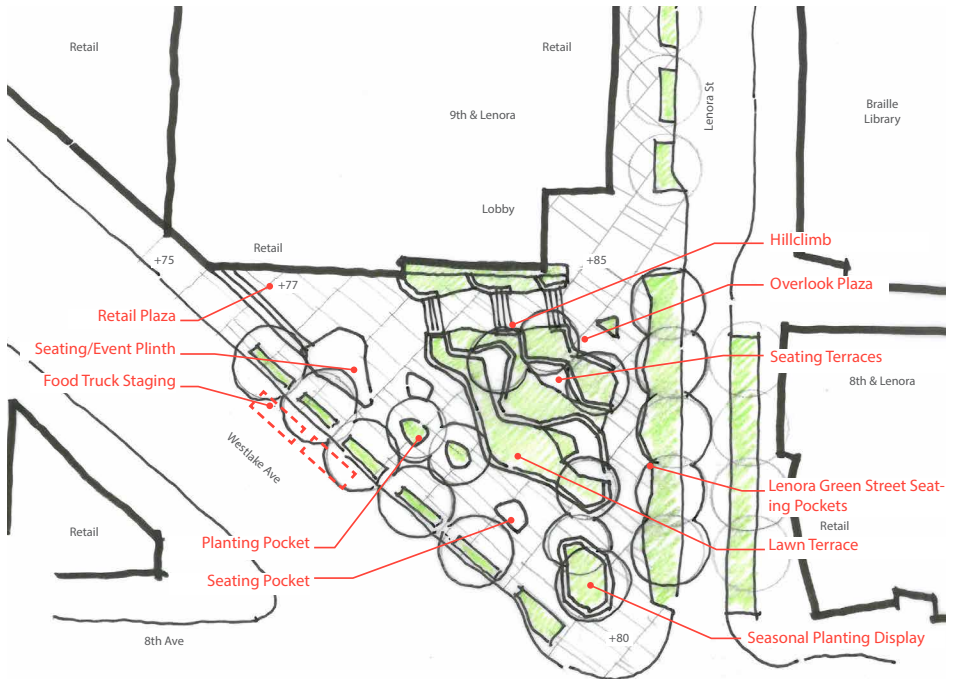
OUTDOOR



OFF-SET

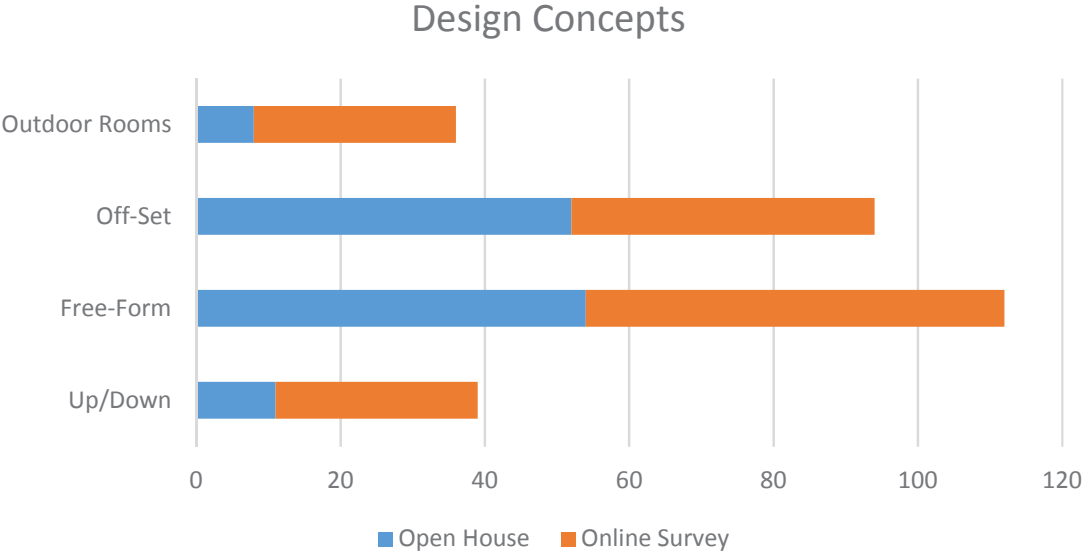
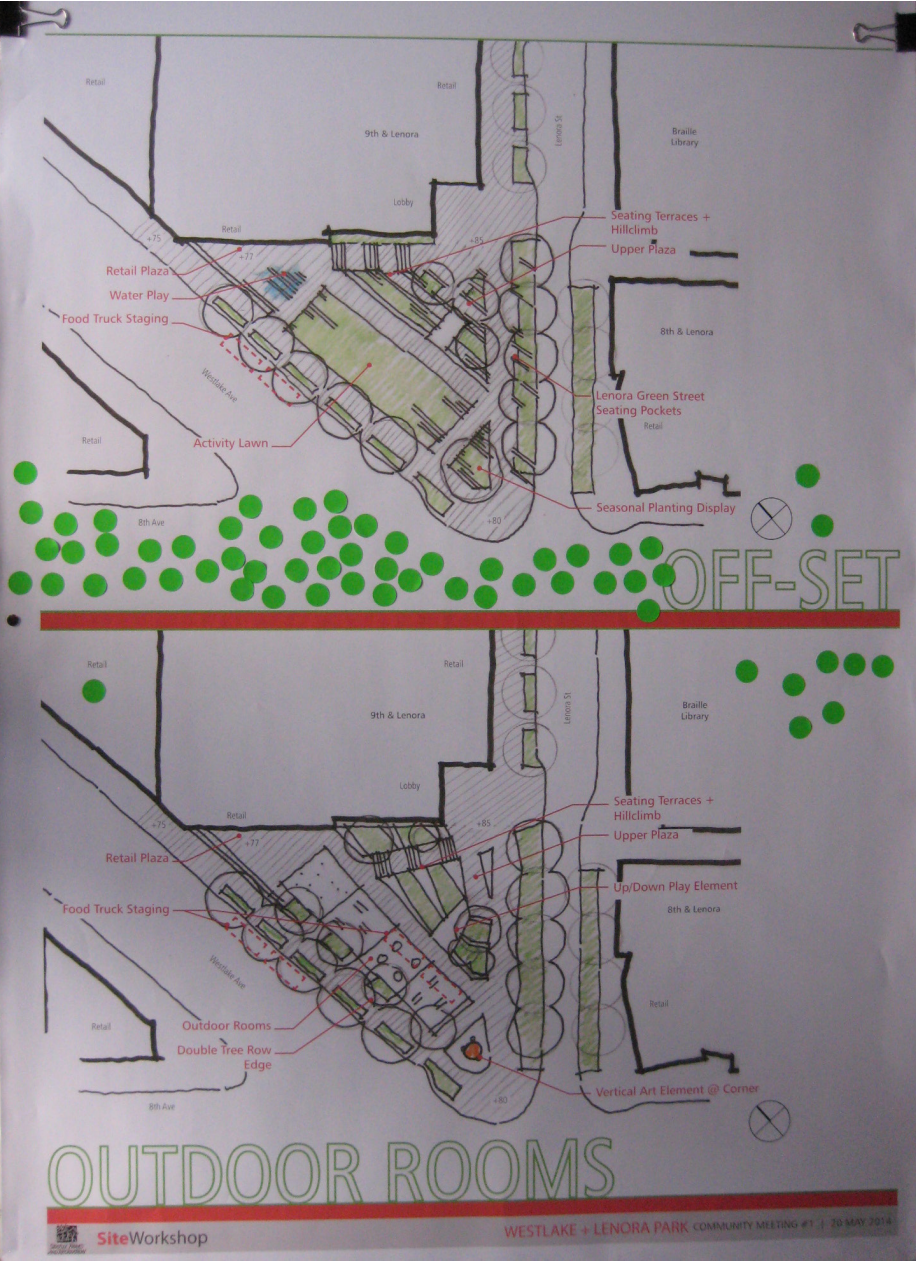


UP/DOWN



FREE-FORM







# Design Statement + Program

Westlake & Lenora Park leverages a leftover triangle of real estate with good aspect and public access, reaching beyond the property line to create an urban room in the midst of the rapidly developing high-rise neighborhood of the Denny Triangle.

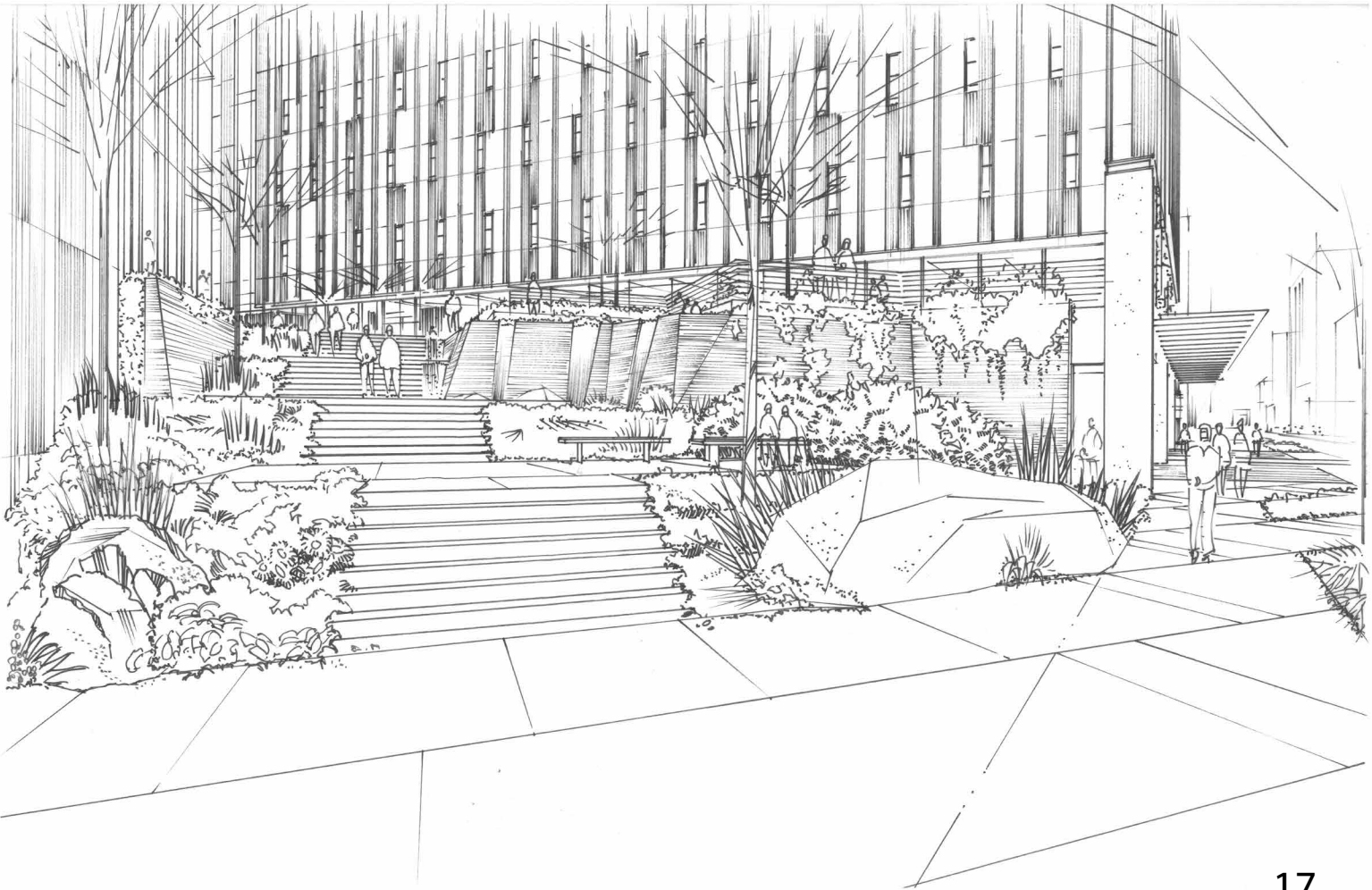
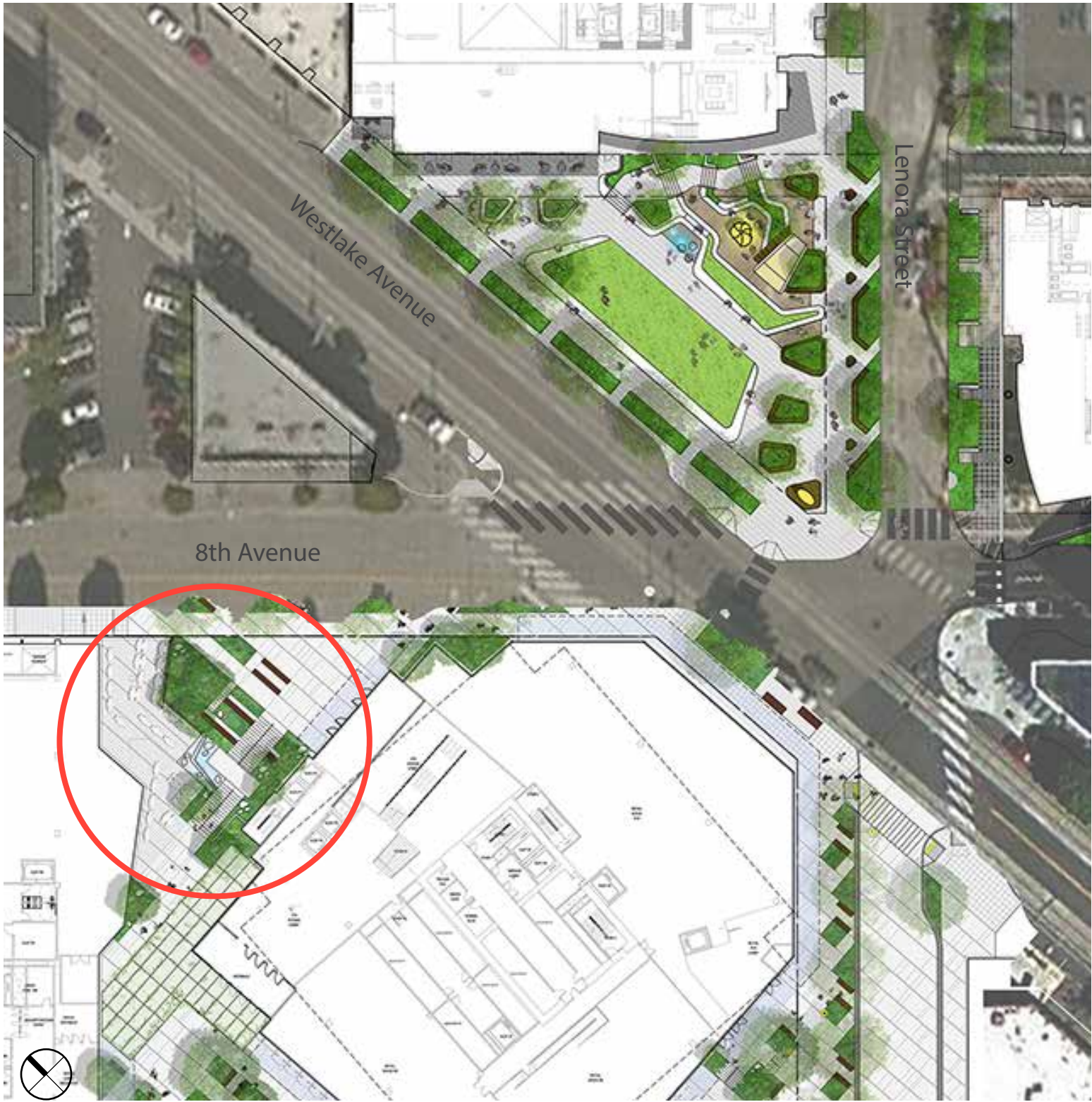
The park design responds directly to the anticipated open space needs of this evolving downtown neighborhood without overlaying a distinct thematic narrative. It is anticipated that the park will gain this unique identity based on the strength of individual icons such as art, play, events, and strength of connection to surroundings.

The park design creates a flexible urban open space for residents, workers, and visitors to the neighborhood. The park will:

- Provide abundant **seating** opportunities integrated into the site topography
- Integrate non-traditional, integrated **play** opportunities
- Integrate **art** as fundamental space-defining element(s)
- Maintain a level, open **lawn** area for passive activities and events
- Incorporate infrastructure to support community **events** and programming
- Utilize **planting** to define space and create a sense of green respite



# Open Space Context





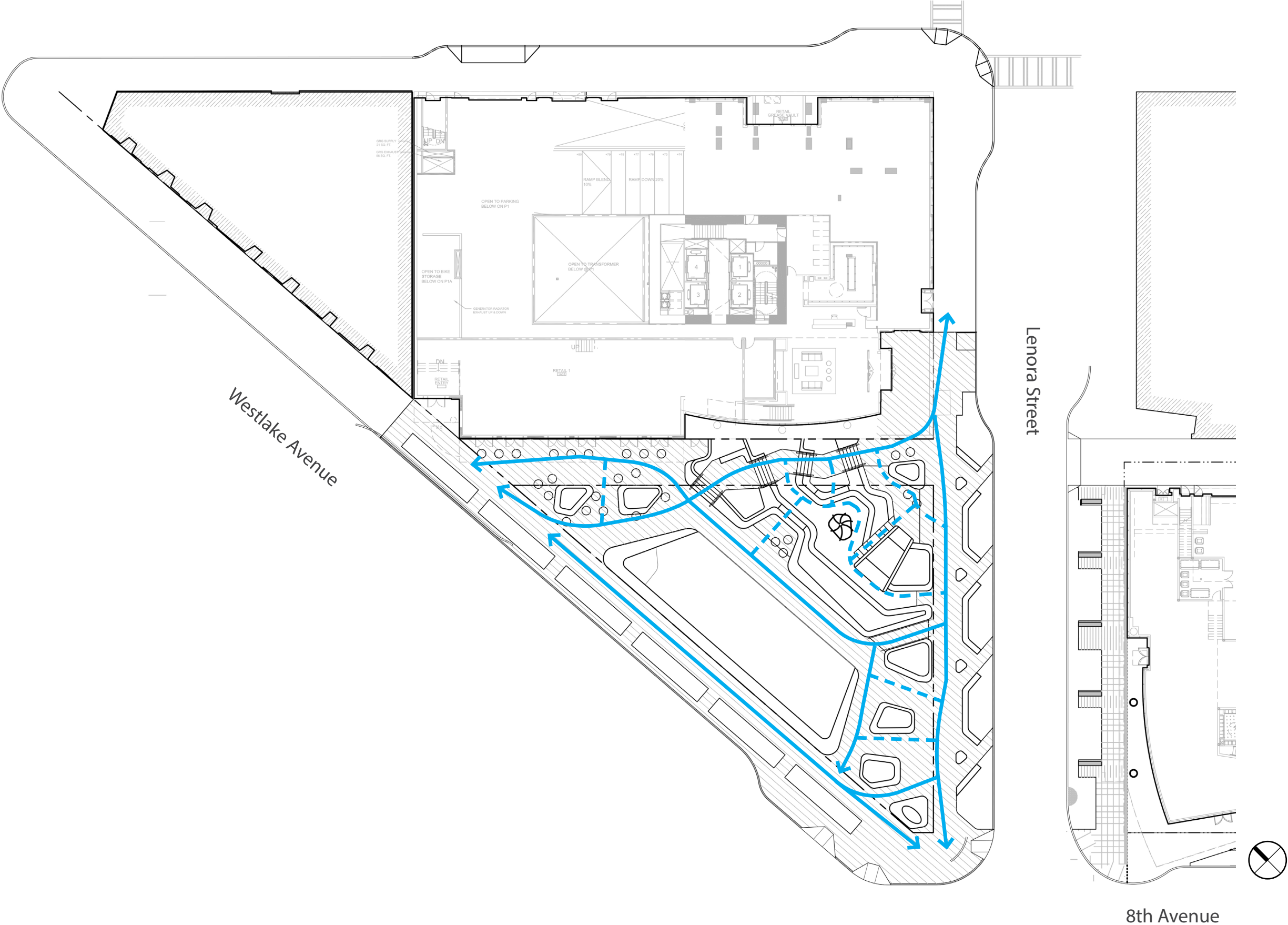
# Park Site Plan



- 1 Retail Seating and Lower Plaza
- 2 Raised Lawn
- 3 Continuous Seat Wall
- 4 Corner Plaza
- 5 Meandering Hillclimb
- 6 Upper Plaza (Overlook)
- 7 Water Play (Option)
- 8 Over/Under Play (Treehouse)
- 9 Up/Down Play (Slide)
- 10 Lenora Green Street Improvements
- 11 Westlake Avenue Improvements

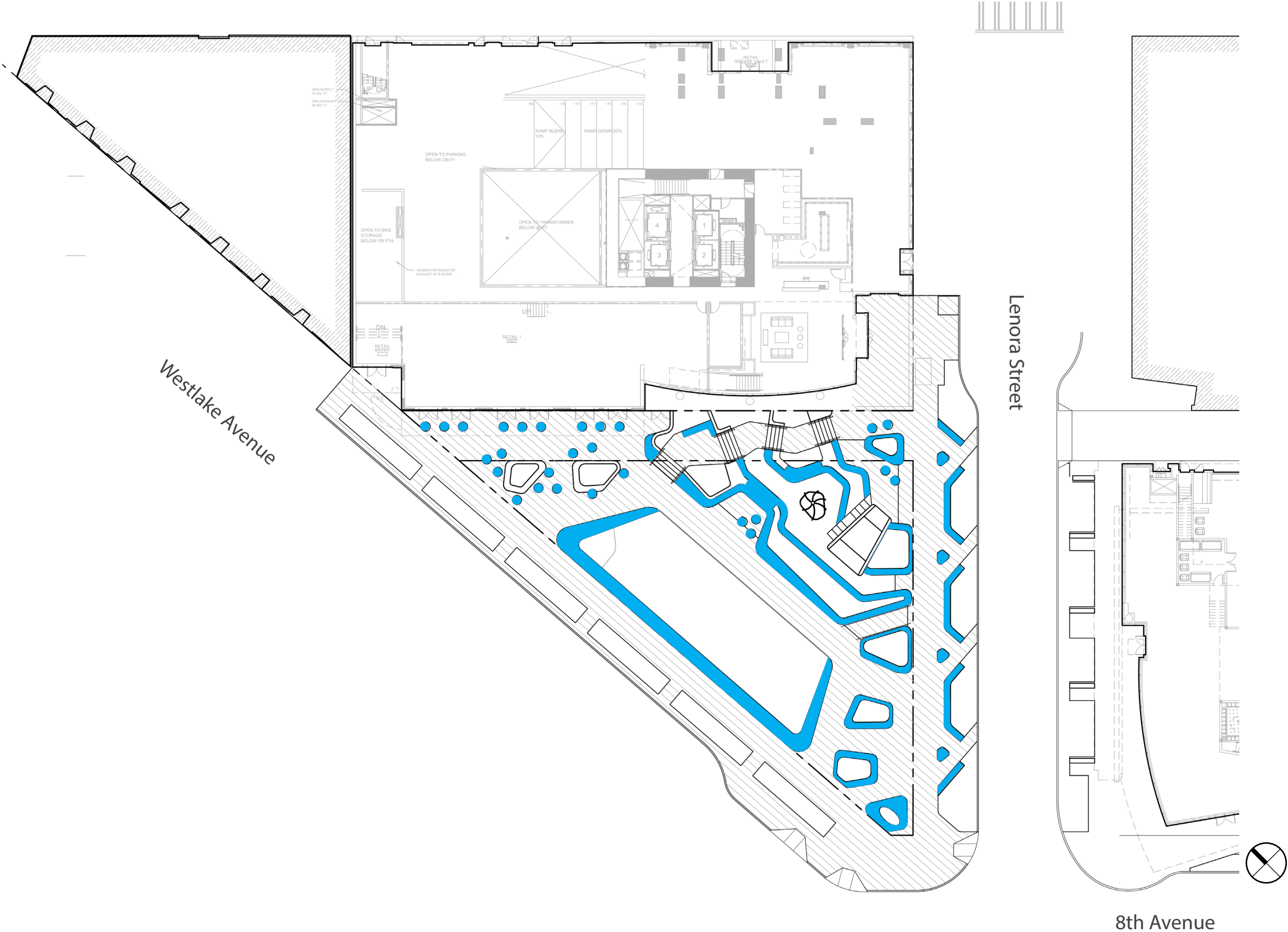


Circulation

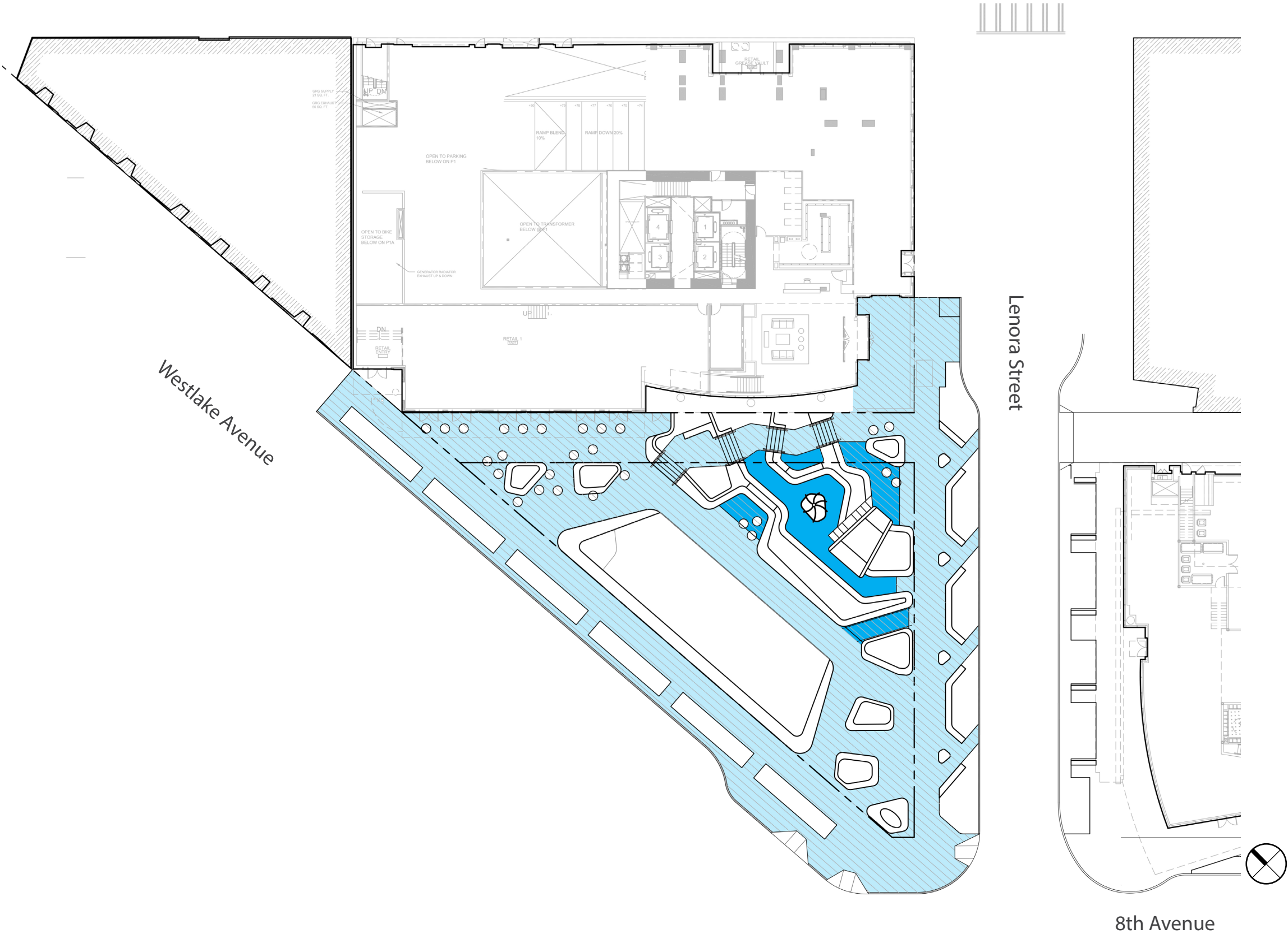




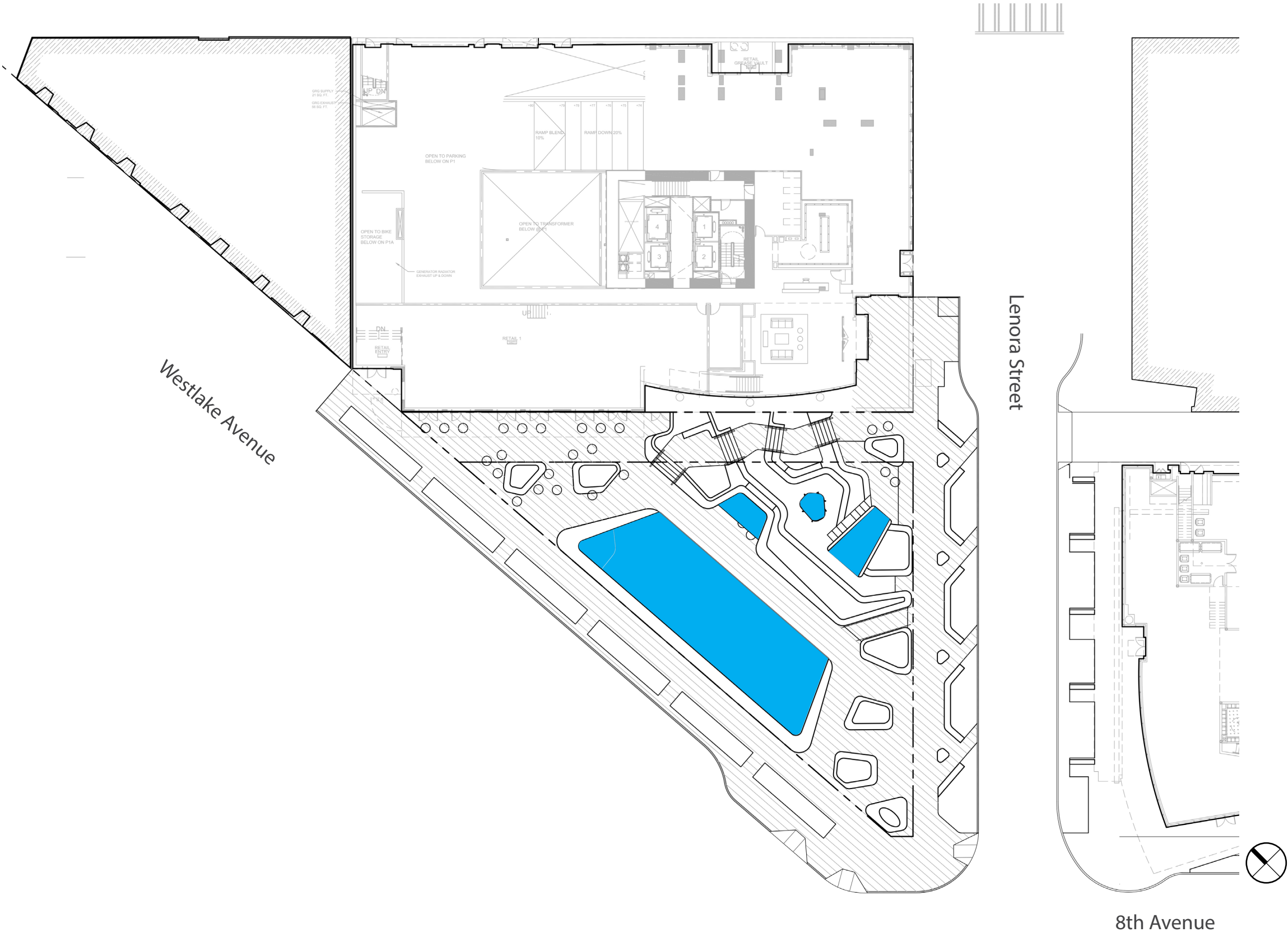
Seating



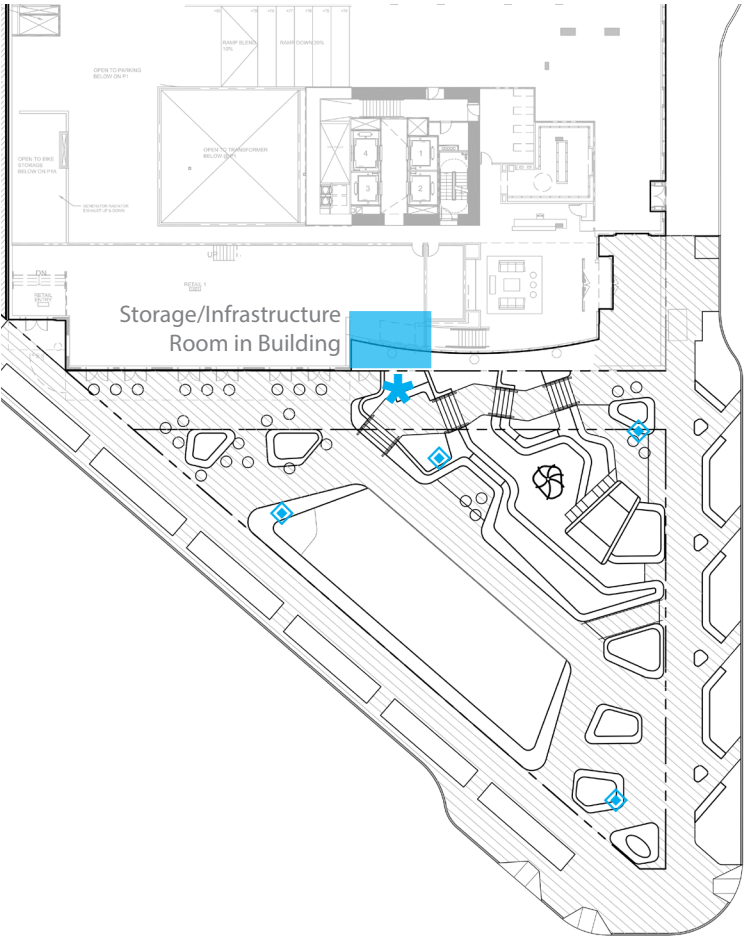




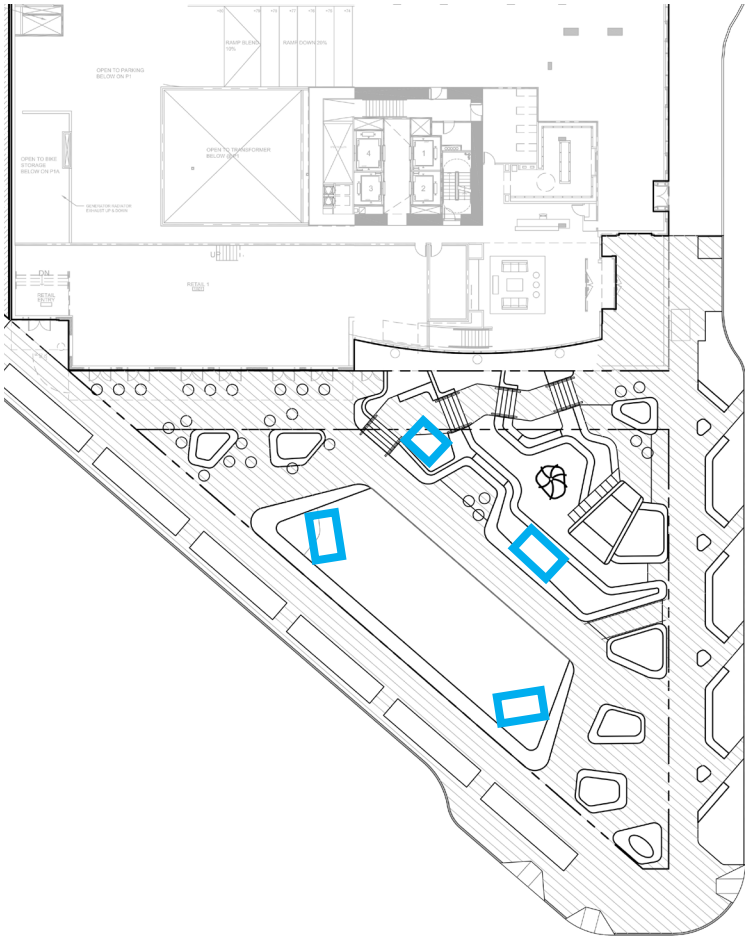




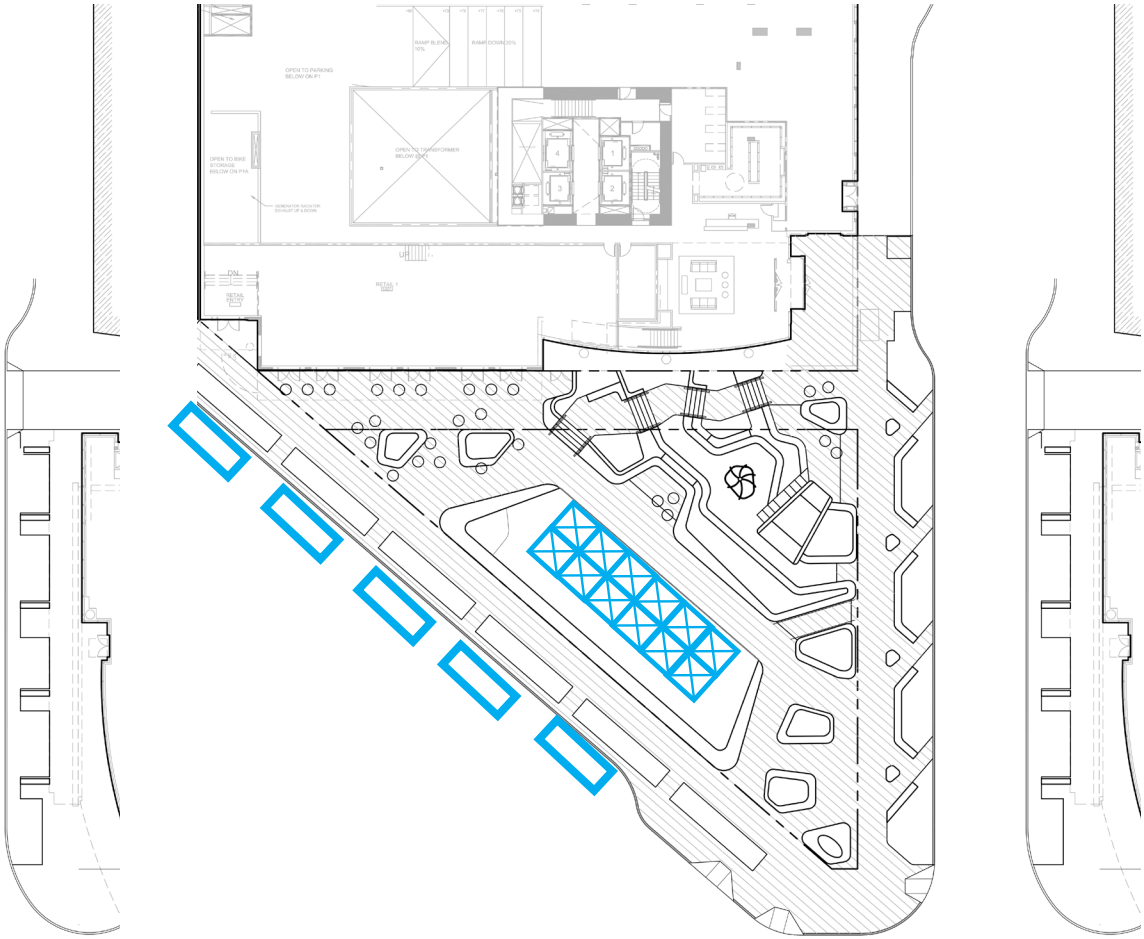




Infrastructure

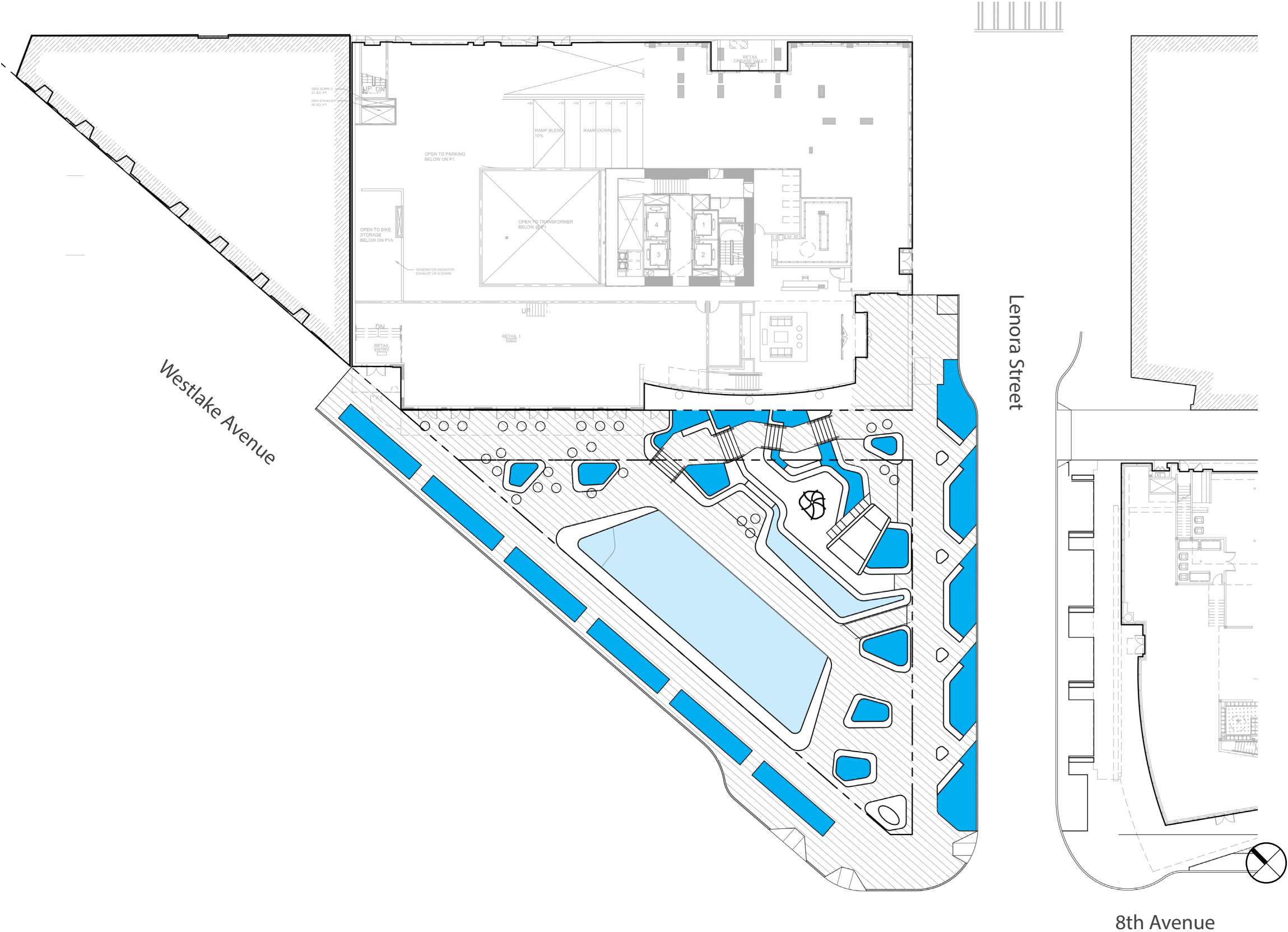


Performance Scenario



Market/Festival Scenario





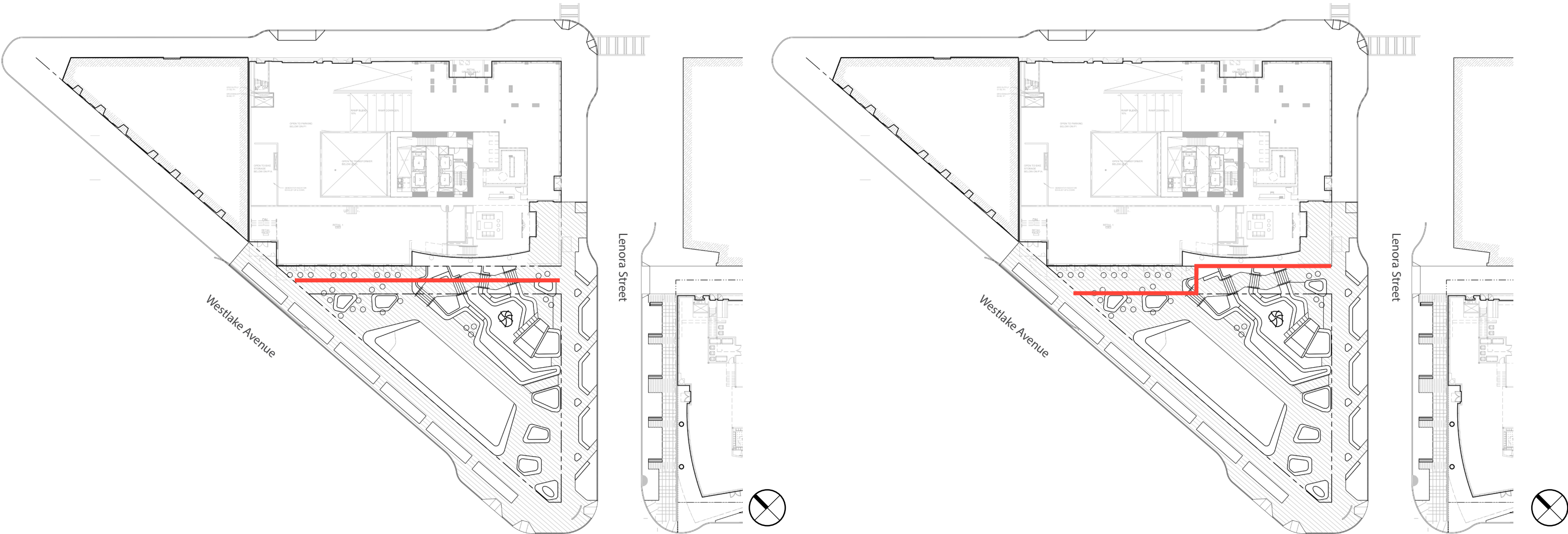


Art Opportunities





# Potential Alley Vacation Scenarios







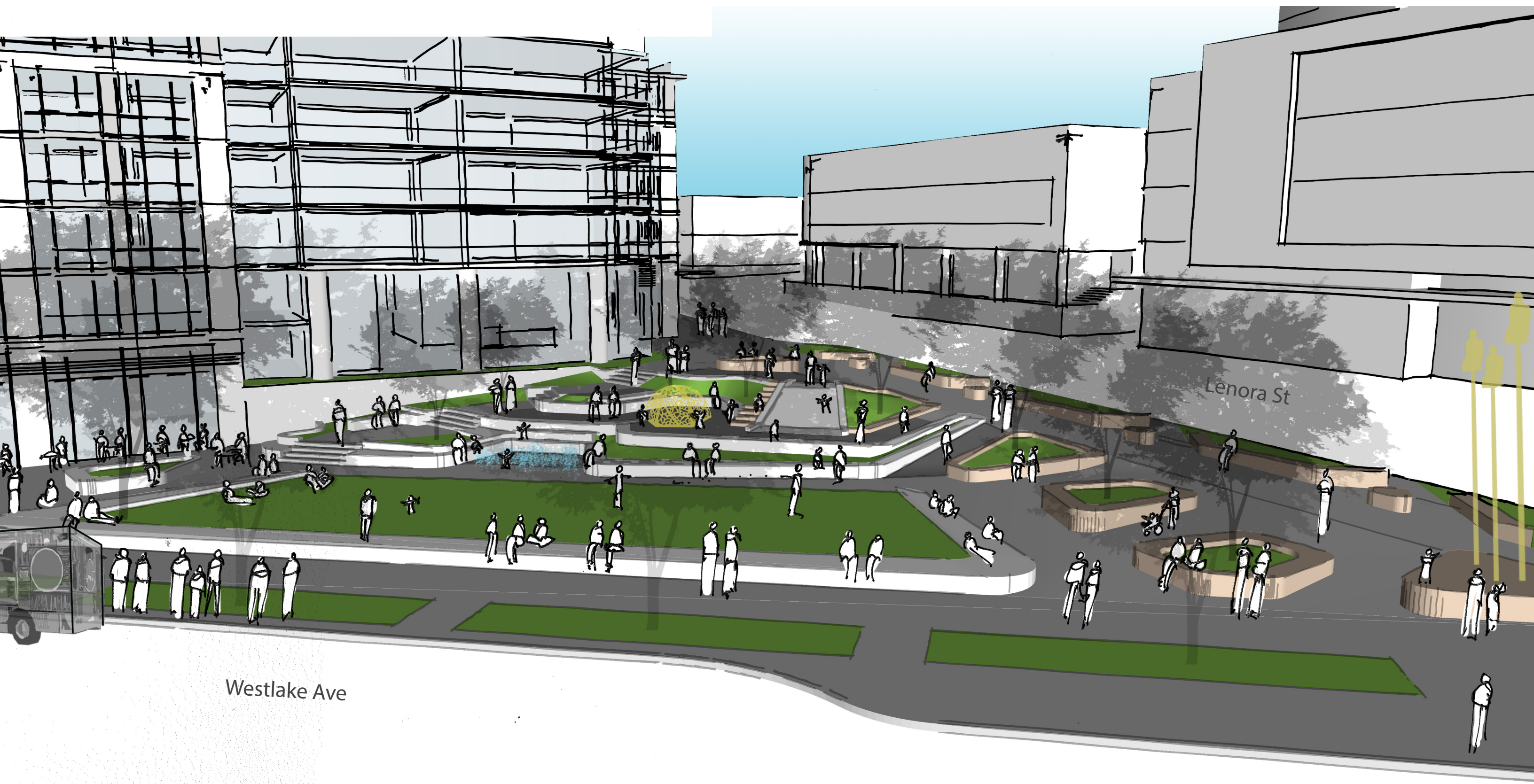


Birdseye View





View looking East





# View across Westlake





# Park Site Plan



- 1 Retail Seating and Lower Plaza
- 2 Raised Lawn
- 3 Continuous Seat Wall
- 4 Corner Plaza
- 5 Meandering Hillclimb
- 6 Upper Plaza (Overlook)
- 7 Water Play (Option)
- 8 Over/Under Play (Treehouse)
- 9 Up/Down Play (Slide)
- 10 Lenora Green Street Improvements
- 11 Westlake Avenue Improvements