

# South Park Plaza

## Seattle Design Commission February 4, 2020

### Presenters

Seattle Parks & Recreation

Karen Kiest Landscape Architects

Tilghman Group, Transportation Planning

Jay Rood  
Andy Sheffer

Karen Kiest  
Meredith Hall

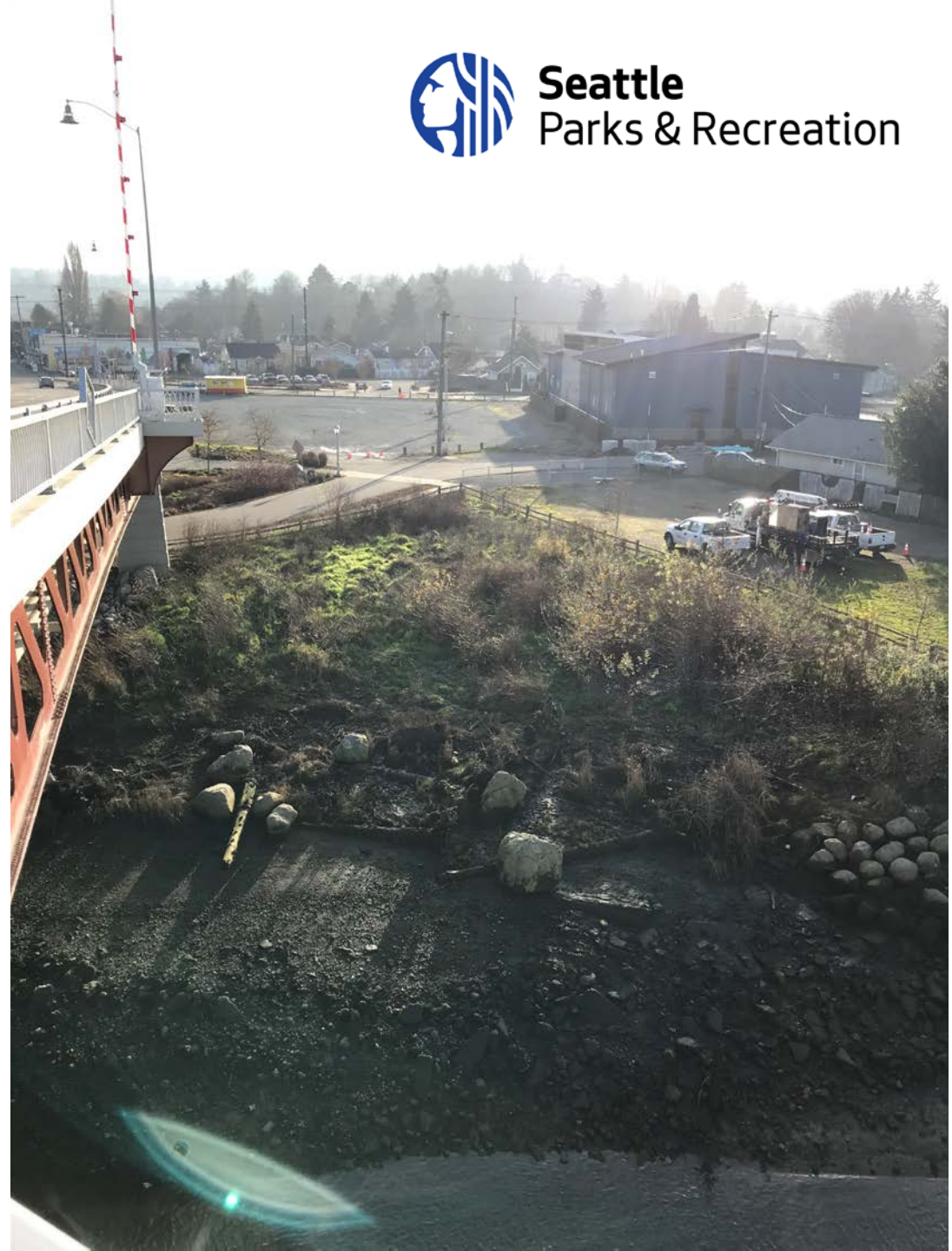
Ross Tilghman

# Project

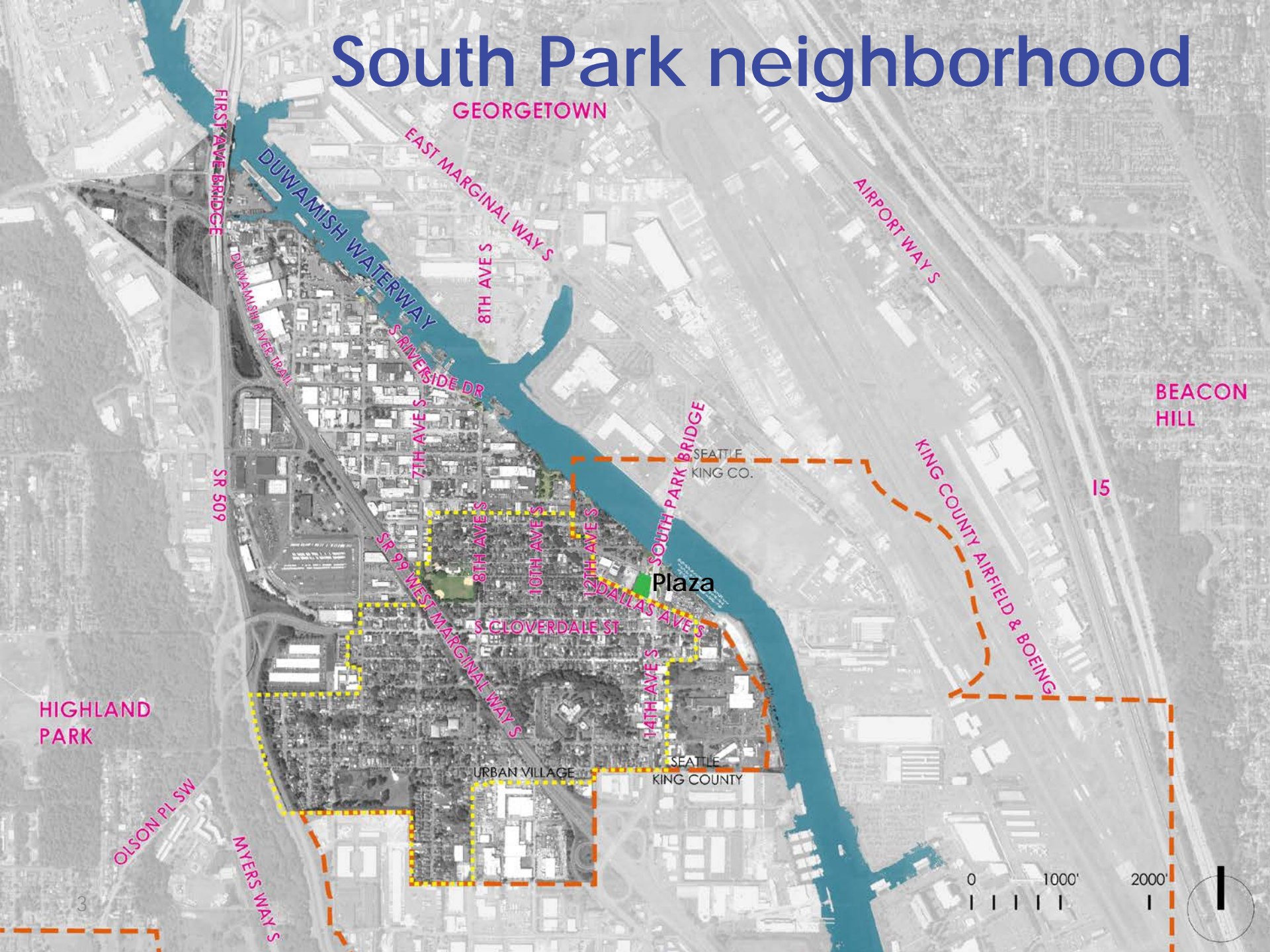
- This is one of 14 landbanked sites acquired to provide additional access to open space in identified gaps throughout the city.
- The design will serve as an urban plaza, connection to King County improvements and will reference the South Park Green Space Vision Plan.
- As this fund is for open space, there is a 15% max. Limit on impervious surfaces within the property lines with the exception of pathways and surfaces, under canopy of trees.

# Program

- There is no fixed program; program is being developed through site opportunities and constraints, and community input



# South Park neighborhood



GEORGETOWN

FIRST AVE BRIDGE

DUWAMISH WATERWAY

EAST MARGINAL WAY S

8TH AVE S

AIRPORT WAY S

DUWAMISH RIVER TRAIL

S RIVERSIDE DR

7TH AVE S

SOUTH PARK BRIDGE

SEATTLE  
KING CO.

BEACON  
HILL

SR 509

KING COUNTY AIRFIELD & BOEING

15

Plaza

SR 99 WEST MARGINAL WAY S

8TH AVE S

10TH AVE S

12TH AVE S

S DALLAS AVE S

S CLOVERDALE ST

HIGHLAND  
PARK

14TH AVE S

URBAN VILLAGE

SEATTLE  
KING COUNTY

OLSON PL SW

MYERS WAY S

0 1000' 2000'



For decades, the community has dreamed of a river walk and increased open space to increase livability and overcome historic inequities.

# Community Vision

**T-117 - 2015 (streets) & 2021 (habitat)**

**Georgetown-South Park Connection - tbd (SDOT)**

**South Park Bridge 2014**

**River walk mural 2019**

**8th & Riverside Open Space 2013**

**Outside Citywide South Park Neighborhood Profile, OPCD, 2019**

# Site



Duwamish Waterway

habitat (no access)

habitat (no access)

KC surplus property

potential riverwalk connections

missing sidewalk

S Orr Street  
Industrial activity

blank wall

fence

fence  
blank

rain gardens

South Park Marina

traffic noise

low rails

Dallas Ave S  
street is potential festival space

13th Pl S

S Sullivan St  
dead end

busy intersection  
commercial connections



# Options shared Spring, Summer



Spine



Oval



Oxbow



Round

# Design Commission Input (9/4/20)

## **Safety and Site Circulation**

- Coordinate with King County to develop a design concept that will improve safety at the intersection of Dallas Ave S and 14th Ave S (South Park Bridge)
- Coordinate with King County on the design of S Orr St; reconsider the design for and allocation of street parking along S Orr St to better facilitate pedestrian connectivity
- Think about circulation and hierarchy of pedestrian movement to and within the park.

## **Future**

- Coordinate with King County on how to develop the King County surplus site and to ensure the future use fits within the community's vision.
- Consider opportunities for outdoor covered areas and/or community facility through project phasing. Consider allocating space in the design concept for the future development of covered areas and/or community facility

## **Activation and Programming**

- Take advantage of street space surrounding the park for activation and programming
- Continue to build partnerships with the local business and residential community for ongoing activation and programming; better understand how proposed community activation and programming concepts can be implemented.

## **Sustainability and Resiliency**

- Study the effect sea level rise and flood conditions will have on the park

## **Community themes and feedback**

- Provide a learning garden to create play and environmental education
- Continue to understand how The Plaza can serve as an active space for learning and experience

# Safety

Study Area of 1,000-foot radius

Site

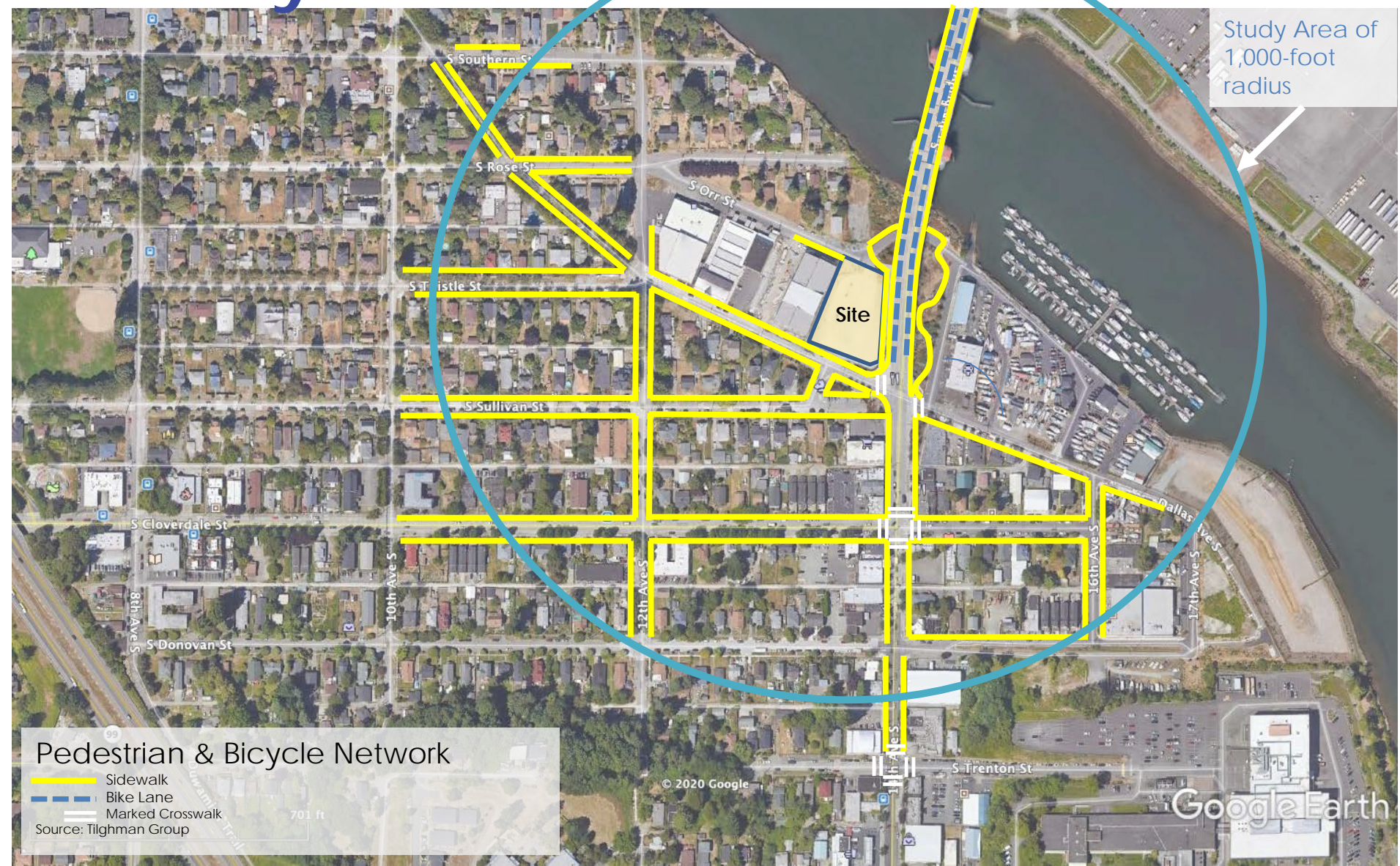
## Pedestrian & Bicycle Network

- Sidewalk
  - Bike Lane
  - Marked Crosswalk
- Source: Tilghman Group

701 ft

© 2020 Google

Google Earth





# Dallas Ave. S.



## Urban Village Neighborhood Access Street

- 28 – 34 feet wide
- 2 lanes + parking

## Very busy for its classification

- 1,975 daily vehicles
- High volume of trucks (34%)

## Speeding a concern

- 25 mph limit, but 12% of vehicles exceed 30 mph

# S Orr Street

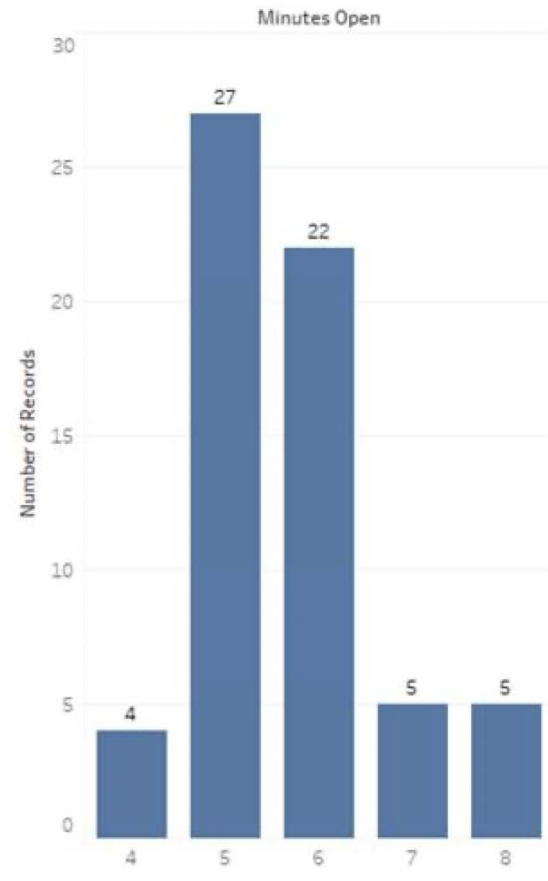


# Bridge Operations

- 1 to 7 openings per day
- 60% on weekdays, 40% on weekends
- Avg. duration is 5.7 minutes, varying from 4 to 8 minutes
- One-third occur between 11:00 a.m. and 2:00 p.m.

Following an opening, traffic backs up from Cloverdale to the bridge's mid-span, blocking Dallas Ave. Clears within 3 to 5 minutes.

South Park Bridge in September







# Sustainability & Resiliency

## 2100 Flooding: 2' of Sea Level Rise & Extreme Tide

Duwamish Waterway Park

Seattle City Limits

12th & Elmgrove Open Space

Seattle City Limits

South Park Bridge Raingardens

Duwamish Waterway

T-117 Port of Seattle Habitat and Park

Plaza

South Kenyon St

South Elmgrove St

South Southern St

South Park Neighborhood Center

South Rose St

10th Ave South

Dallas Ave South

South Orr St

14th Ave South

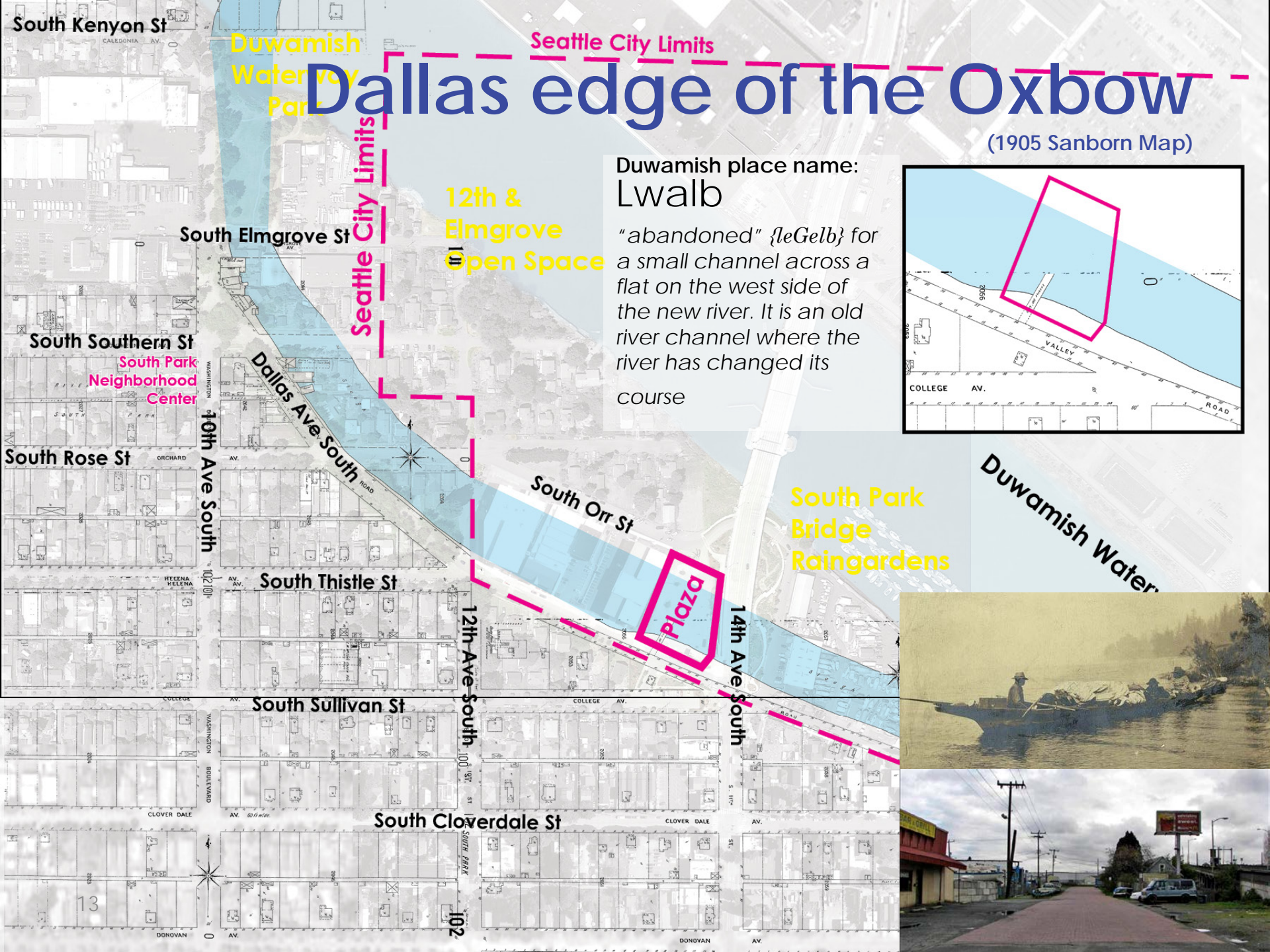
South Thistle St

12th Ave South

South Sullivan St

South Cloverdale St

N



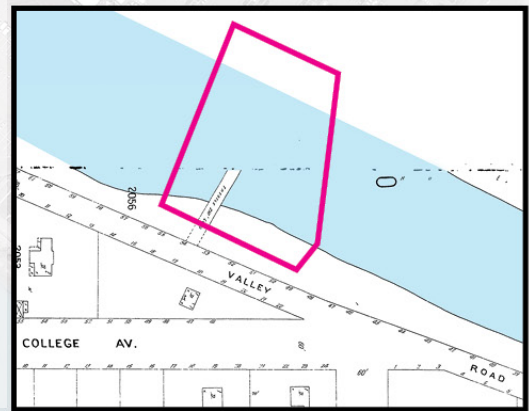
# Dallas edge of the Oxbow

(1905 Sanborn Map)

Duwamish place name:

Lwalb

“abandoned” {leGelb} for a small channel across a flat on the west side of the new river. It is an old river channel where the river has changed its course



12th & Elm Grove  
Open Space

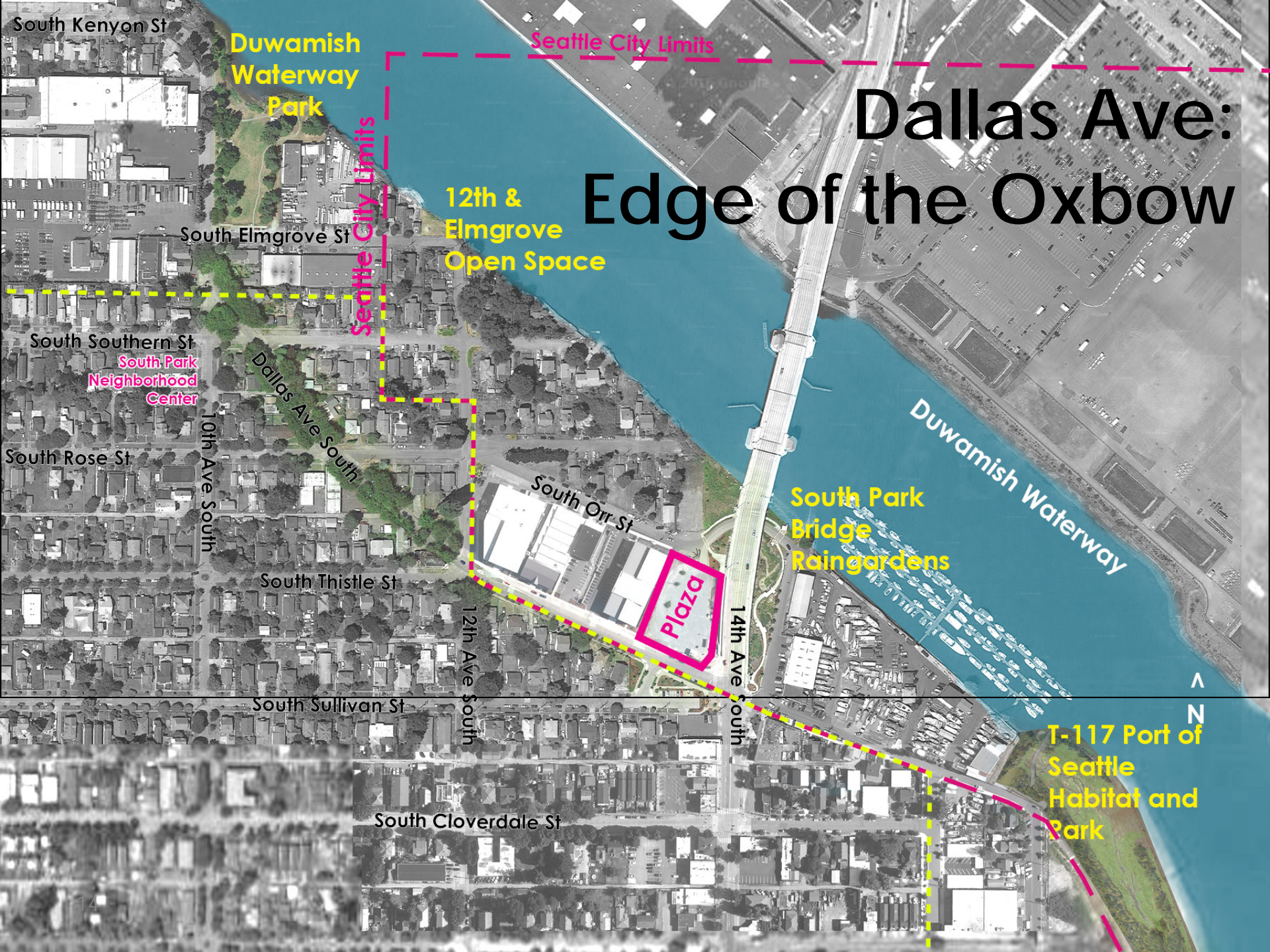
South Park Bridge Raingardens

Plaza

Duwamish Water



# Dallas Ave: Edge of the Oxbow



Duwamish  
Waterway  
Park

Seattle City Limits

12th &  
Elmgrove  
Open Space

Seattle City Limits

South Park  
Bridge  
Rain Gardens

Duwamish Waterway

Plaza

T-117 Port of  
Seattle  
Habitat and  
Park



South Kenyon St

South Elm Grove St

South Southern St

South Park  
Neighborhood  
Center

South Rose St

10th Ave South

Dallas Ave South

South Orr St

South Thistle St

12th Ave South

14th Ave South

South Sullivan St

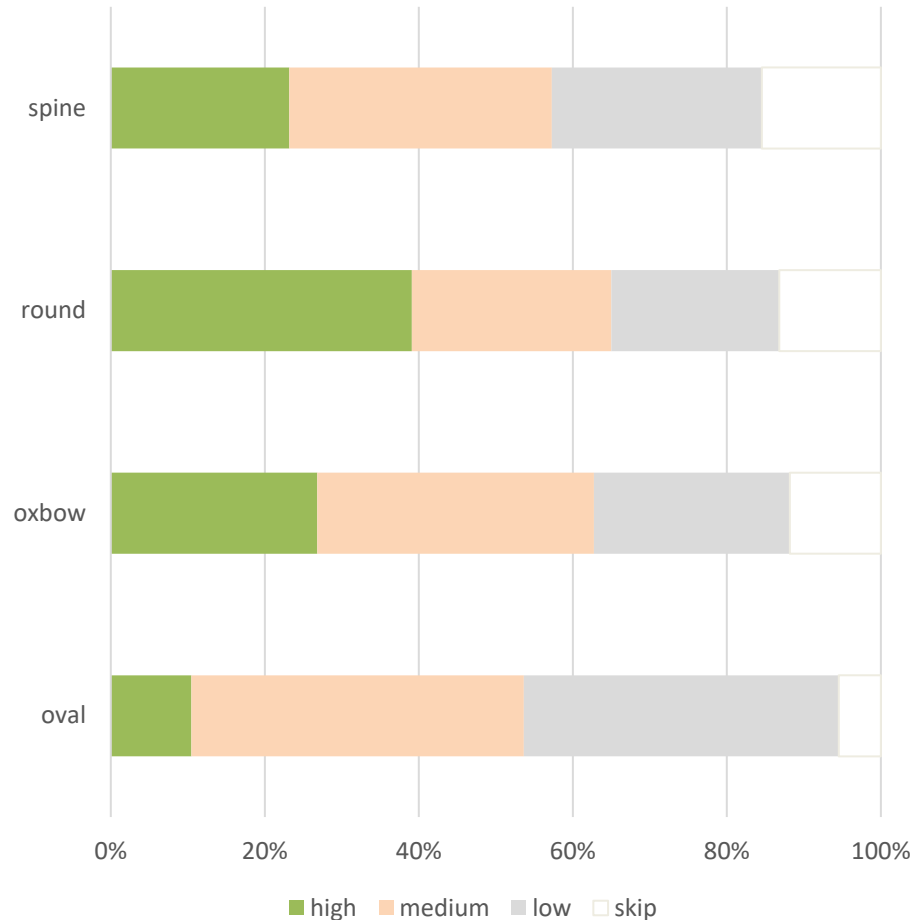
South Cloverdale St

# Community Input

## August - October 2020 Online Survey

- 220 responses

This plaza park design best fits South Park.



## Ongoing Site Activation

- SPR has assisted the community in hosting activation events at the site

## Options outreach through October 2020

- Boards at Plaza
- Postcards
- Meeting with youth of Duwamish Valley Sustainability Group,
- Meeting with Port of Seattle
- Spanish radio PSAs
- Online Survey (Spanish, Vietnamese, English)

### South Park Plaza Project



We want your input!

#### Project Goal:

Seattle Parks and Recreation purchased this site to provide open space for the South Park community. Now we need your input on park elements and future use so together we can develop a successful park that serves the South Park neighborhood. With your input we will develop a design for your new park.

#### Project Schedule

- Planning: 2018 - 2020 Design: 2020 - 2021
- Construction: 2021 - 2022

#### Please tell us what you think of the four design options!

Text or email your comments to: Ed Potthorst 206-765-6292 Text Ed.Potthorst@seattle.gov

Or fill out the online survey at:

<http://www.seattle.gov/parks/about-us/current-projects/south-park-plaza-landbanked-site-park-development>

Thank you for participating!



### Proyecto South Park Plaza



¡queremos conocer su opinión!

#### Objetivo del proyecto:

Seattle Parks and Recreation compró este sitio para proporcionar un espacio abierto para la comunidad de South Park. Ahora necesitamos su opinión sobre los elementos del parque y sobre el uso futuro para que juntos podamos desarrollar un parque exitoso que sirva para el vecindario de South Park. Con su aporte desarrollaremos el diseño de su nuevo parque.

#### Cronograma del proyecto

- Planificación: 2018-2020 Diseño: 2020-2021
- Construcción: 2021-2022

#### ¡Cuéntenos qué le parecen las cuatro opciones de diseño!

Envíe sus comentarios por mensaje de texto a Ed Potthorst al 206-765-6292 o por correo electrónico a Ed.Potthorst@seattle.gov.

O complete la encuesta en línea en:

<http://www.seattle.gov/parks/about-us/current-projects/south-park-plaza-landbanked-site-park-development>

¡Gracias por participar!



### Dự Án Quảng Trường Công Viên Young (South Park Plaza Project)



Mong Nhận Được Ý Kiến Đóng Góp!

#### Mục Tiêu Dự Án:

Seattle Parks and Recreation đã mua lại khu đất này để mang lại không gian ngoài trời cho công đồng South Park. Giờ đây, chúng tôi rất cần ý kiến đóng góp của quý vị về các hạng mục của công viên và sử dụng để sử dụng sau này để chúng ta có thể cùng nhau phát triển trên công viên thành công, phục vụ cho người dân khu phố South Park. Nhờ ý kiến đóng góp của quý vị, chúng tôi sẽ lập thành một bản thiết kế cho công viên mới của quý vị.

#### Tiến Độ Dự Án

- Lập Kế Hoạch: 2018 - 2020 Thiết Kế: 2020 - 2021
- Thi Công: 2021 - 2022

#### Xin cho biết ý kiến của quý vị về bốn phương án thiết kế!

Gửi ý kiến của quý vị qua tin nhắn hoặc email về Ed Potthorst 206-765-6292 văn bản Ed.Potthorst@seattle.gov

Hoặc điền khảo sát trực tuyến tại:

<http://www.seattle.gov/parks/about-us/current-projects/south-park-plaza-landbanked-site-park-development>

Xin cảm ơn sự tham gia của quý vị!



# Community Input Themes

*From Aug-Oct 2020 survey*

## **EVENTS & VENDING**

- parking for food trucks, maintaining the pupusa vendor
- programming enough events to activate space
- Power for events, prep space

## **PLANTING**

- Trees for buffer and air quality
- Native plantings for habitat, connection to river

## **CULTURAL ELEMENTS**

- Sculpture/Murals – community artists, involving local kids
- Gazebo
- Gathering spaces for cooking and eating
- Partner with organizations for programming
- Native naming
- Telling story of:
  - Indigenous history, Duwamish and Salish culture
  - Latinx community; multi-cultural community
  - Farming and industrial history





# Options shared Spring, Summer



## Spine

- Like the focal point/Gazebo preferred
- Good for markets
- Elements not as well integrated
- Less flexible
- Missing a stage space

## Oval

- Like flexibility
- Too much grass
- Needs more programming
- Needs more trees
- Needs more vending space

## Oxbow

- Like meanders
- Like tree buffers
- Connection to street good for market
- Like Play at Orr
- Like historical reference

## Round

- Like stage location for performance & having back to warehouse
- Plenty of space for events, markets
- Love brick
- Move play to Orr
- Need programming for activation

# Ongoing Input

## through Design Development

- Better define events programming needs in partnership with community groups and Parks
  - South Park Merchants
  - Duwamish Valley Youth Corps
  - Duwamish Valley Cleanup Coalition
  - South Park Arts



- Participate in discussions of SDOT Home Zone improvements to mitigate traffic impacts
- Engage neighbors, community groups, and Duwamish Tribe to define art and materiality of Park





# Oxbow and Round Meet



0' 30' 60' N

# Oxbow and Round Meet



- 1 Accessible Parking
- 2 Expand Overlook
- 3 Connector Loop
- 4 Entry Plaza with Brick Road, Bikes, Sign, Porta potty, Dumpster
- 5 Space for Stage
- 6 Amphitheater Seats
- 7 Iconic Play Structure
- 8 Picnic Area
- 9 On-site (and offsite) Stormwater Management

0' 25' 50' N

# KC Conservation Fund Analysis



Impervious surface:

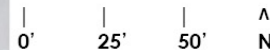
Plaza+Stage+Brick Road+  
facilities 4,440 sf

Play Area + 953 sf

**Total = 5,334 sf**

**(14.8% of 36,020 sf site)**

*Paths, seatwalls, and pads  
for tables and seating not  
included.*



# Oxbow and Round Meet

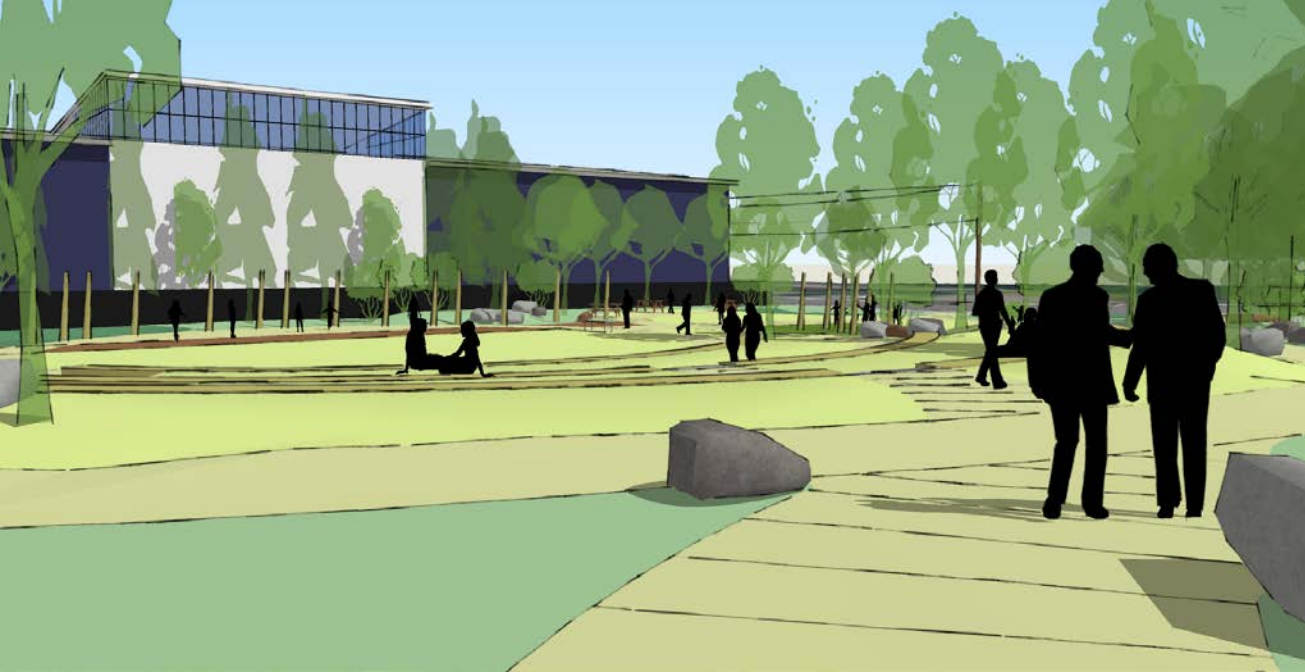




# View from North



# Views



View into park from corner



Amphitheater





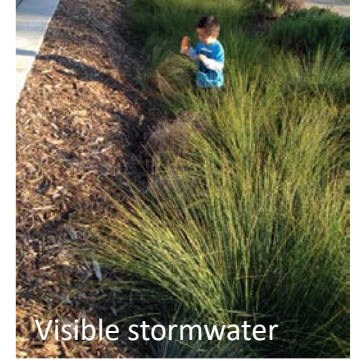
Looking north to Play Area



Looking south to Picnic and Play



# Sustainability & Resiliency



0'

trees

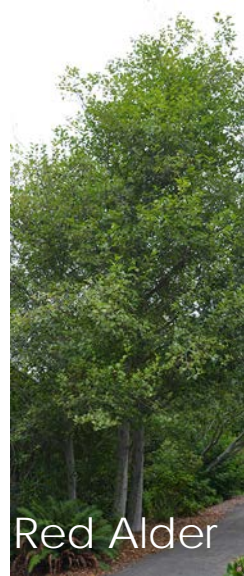
# Planting



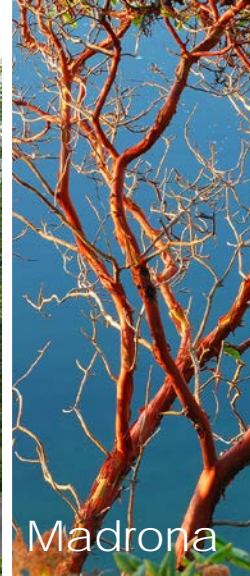
Cascara



Shore Pines



Red Alder



Madrona



Maple



W. Red Cedar



Vine Maple

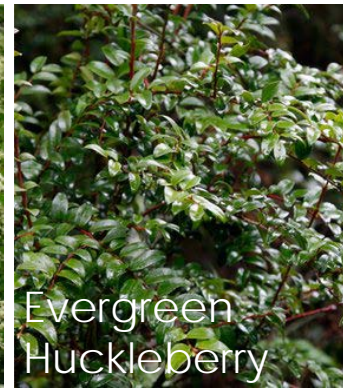
shrubs



Thimbleberry



Oceanspray



Evergreen Huckleberry



Oregon Grape

shore



logs



Beach Strawberry



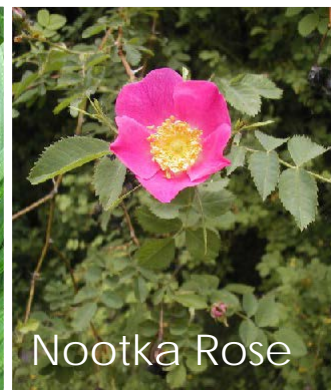
Snowberry



Salal



American Dunegrass



Nootka Rose

# Events



# Discussion









Dallas Avenue S – looking east







S Orr Street – looking south



S Orr Street - looking north off site



S Sullivan Street – parking off site



South Webster St

South Austin St

South Holden St

South Portland St

South Chicago St

South Kenyon St

South Monroe St

South Elmgrove St

South Southern St

South Rose St

South Thistle St

South Sullivan St

South Orr St

South Park

7th Ave Pump Station

South Riverside Dr

Duwamish Trail Bike Path

5th Ave South

7th Ave South

8th Ave South

10th Ave South

12th Ave South

14th Ave South

Gateway North Park

Riverside Street End & 8th Ave S Port Park

Duwamish Waterway

Duwamish Waterway Park

12th & Elmgrove Open Space

Seattle City Limits

Seattle City Limits

South Park Neighborhood Center

South Park Community Center

Plaza

South Park Bridge Rain Gardens

Cesar Chavez Park

Skate Park

T-117 Port of Seattle Habitat and Park



# Nine Block Context



12th Ave S

12th Ave S

12th Ave S

S Rose St

S Orr Street

S Sullivan St

S Cloverdale St

South Park Bridge

Duwamish Waterway

KC Raingardens

South Park Plaza

South Park Marina

Dallas Ave S

14th Ave S

S Cloverdale St

Ave S

Port of Seattle  
T-117 Park  
(Habitat  
Restoration &  
Park under  
construction)

King County  
City of Seattle

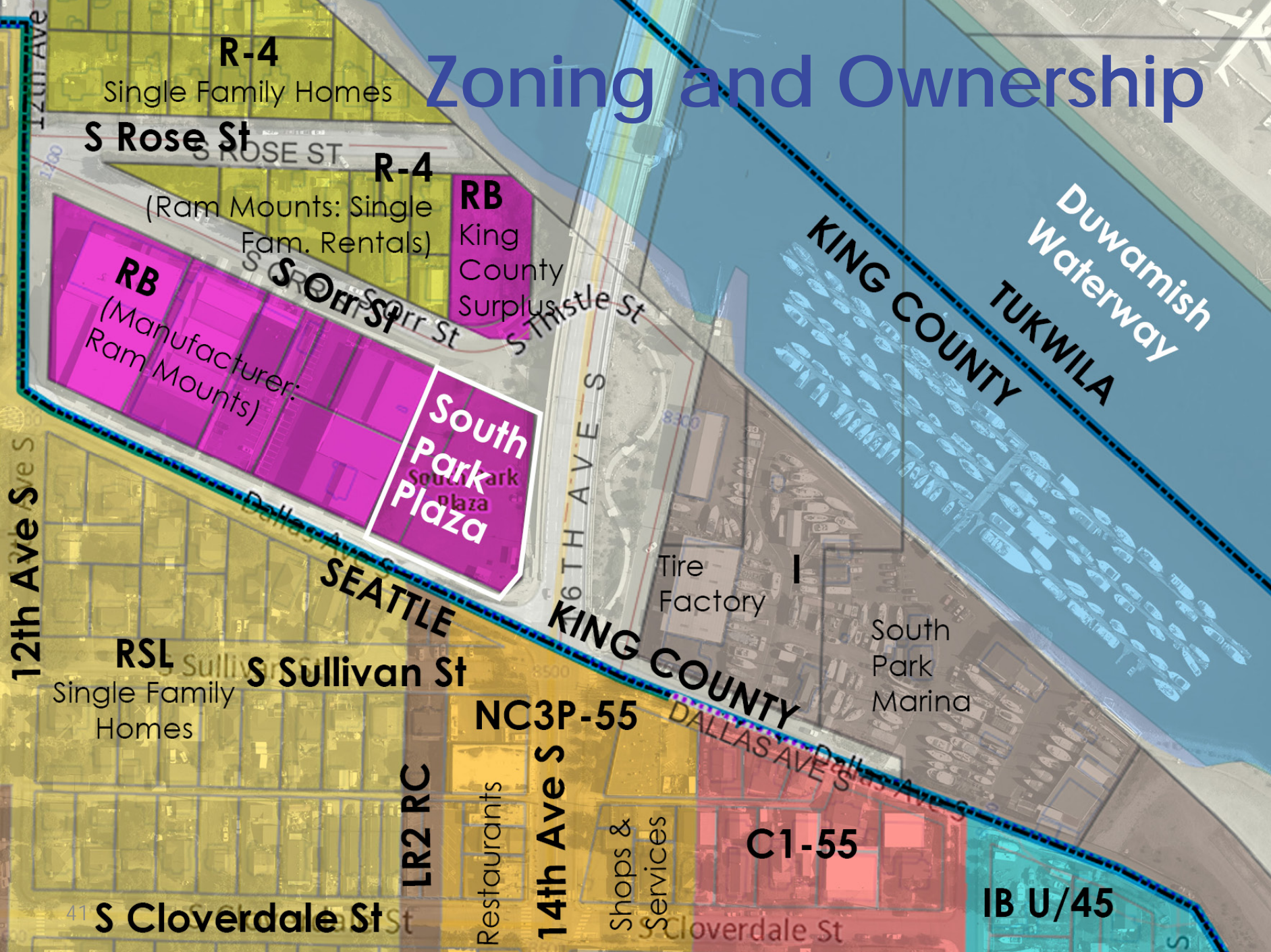
Dallas Ave S

13th Pl S

Ave S



# Zoning and Ownership



# Site



Industrial activity  
S Orr Street

blank wall

potential riverwalk connections

missing sidewalk

habitat (no access)

KC surplus property

fence

fence

blank

traffic noise

rain gardens

habitat (no access)

Duwamish Waterway

South Park Marina

Dallas Ave S

street is potential festival space

13th Pl S

S Sullivan St dead end

busy intersection commercial connections



# Parking

Within 1,000 feet:

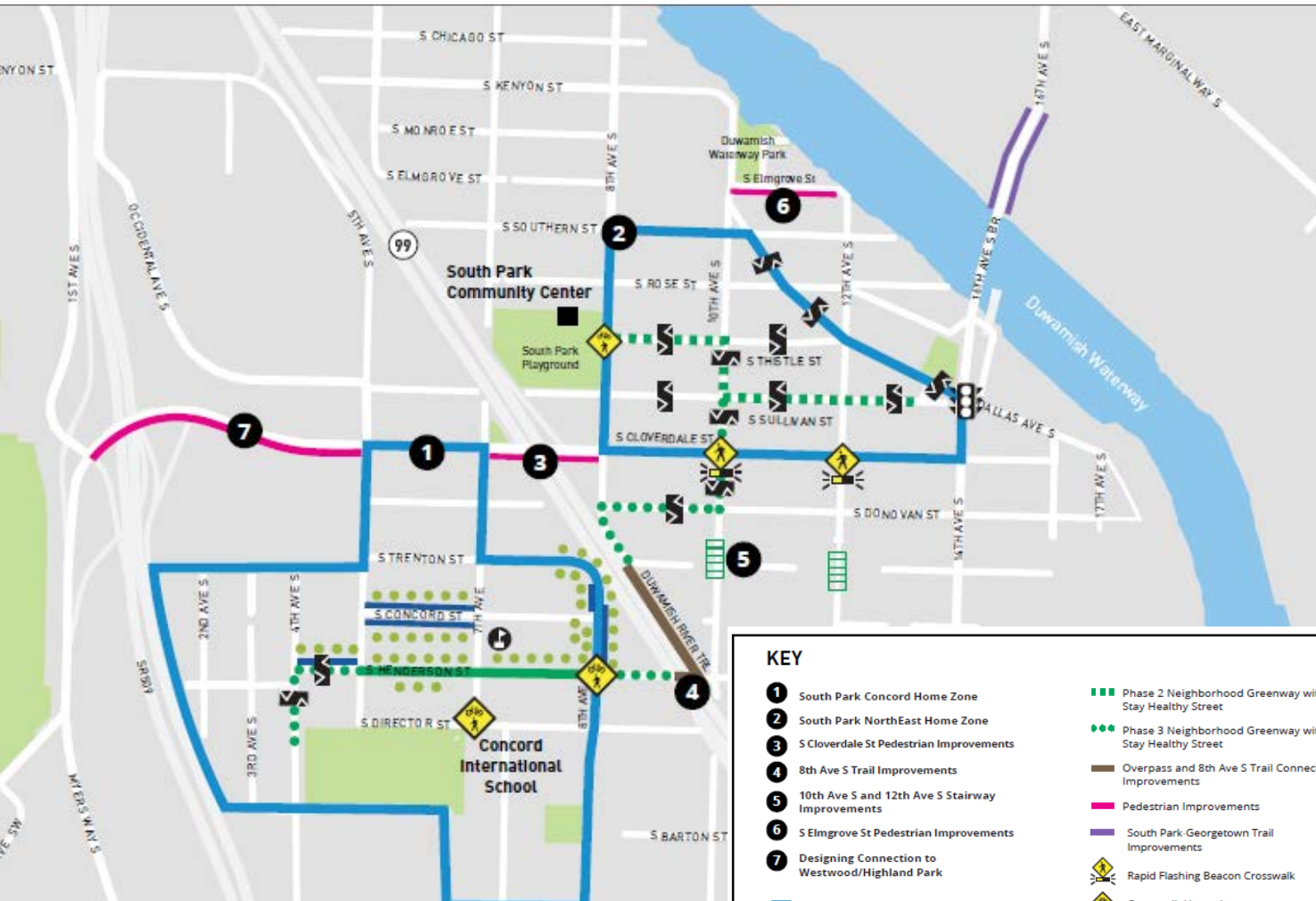
- 428 curb-side spaces yielding a practical capacity of 365 spaces (at 85% max. use)
- Occupancy
  - Weekday Noon = 51%
  - Weekday 4:30 p.m. = 49%
  - Saturday 12:45 p.m. = 40%

Available spaces could support 250 or more people visiting park at one time

Most (87%) spaces west of 14<sup>th</sup> Ave. S.



# South Park Home Zone (SDOT)



**KEY**

- 1 South Park Concord Home Zone
- 2 South Park NorthEast Home Zone
- 3 S Cloverdale St Pedestrian Improvements
- 4 8th Ave S Trail Improvements
- 5 10th Ave S and 12th Ave S Stairway Improvements
- 6 S Elmgrove St Pedestrian Improvements
- 7 Designing Connection to Westwood/Highland Park

- Phase 1 Neighborhood Greenway with Stay Healthy Street
- Phase 2 Neighborhood Greenway with Stay Healthy Street
- Phase 3 Neighborhood Greenway with Stay Healthy Street
- Overpass and 8th Ave S Trail Connection Improvements
- Pedestrian Improvements
- South Park-Georgetown Trail Improvements

- Stairway Improvements
- Speed humps: Two speed humps will be added for east-west blocks and one speed hump will be added for north-south blocks.
- Plant new trees

- Home Zone Boundaries
- Rapid Flashing Beacon Crosswalk
- Crosswalk Upgrade
- 14th Ave S & S Dallas St - Evaluate for Crossing Signal