

MEETING #2



SEATTLE CENTER SKATE PLAZA

DESIGN COMMISSION PACKET

AUGUST 1ST 2019

MEETING #1 RECOMMENDATIONS

1. Bring more voices to the design conversation by engaging with diverse communities and organizations throughout the city
2. Continue to negotiate solutions to resolve access to the alley and show how these solutions are reflected in the proposed design
3. Continue to think about how the plaza design will relate to future development to the north of the project site
4. Show how the 5th Ave N and Thomas St intersection respond to the Seattle Center campus
5. Shorten the pedestrian crossing across the proposed vehicular access path
6. Consider siting both pedestrian lighting and technical lighting for skateboarding
7. Consider providing a covered area for weather protection

SINCE MEETING #1

- Expanded outreach
- SEPA published
- Transfer of Jurisdiction approved
- Selected Preferred Design
- Developed design
- Continued stakeholder coordination
- Art Program progress
- Worked with SDOT to better understand the alley conditions, and made a plan to build the skate plaza in phases as vehicular access needs change



STRATEGY

- Deliver a “lean and mean,” safe and skateable park on Day 1
- Accommodate the schedule that allows Skate Like A Girl to hold Summer 2020 classes in the new park.
- Design in the opportunity to adapt if the alley is vacated, and as new funding allows us to enhance the park.
- Replace the park, and then make it better and better.



EXISTING GLASS WILL BE REUSED IN THE NEW PARK

SKATE LIKE A GIRL

- Seattle's passionate skateboarding community has been the City's partner for more than 20 years
- Skate Like A Girl intentionally creates a community that challenges who and how people skateboard
- This Skate Plaza is benefiting from an intentional partnership with Skate Like A Girl
- Together, we have built broad community support to prioritize youth and beginner skaters in the design of the Skate Plaza
- Skate Like A Girl has helped Seattle Center program the skatepark for the past decade with a mission of creating a more inclusive skateboarding community, with a focus on youth, women, and lgbtqai+ folks.
- We envision the plaza as a destination where skateboarders of all income and backgrounds can build their skills and find community year-round.

Skate Like A Girl looks forward to hosting its summer camps and classes in the new park beginning in mid-July 2020.



PHOTO: MIA BOLTON



**SEATTLE CENTER
SKATEBOARDING
2019**

**SKATE
LIKE A GIRL
Seattle**

FREE
Summer Kickoff Sesh
Sunday July 28th
12-4pm

FREE
Skateboarding Clinics
August 3, 4, 10, 11, 17
10am-Noon

Skate Camps
July 29th – August 2nd
August 5th – 9th
August 12th – 16th

Camp Registration:
skatelikeagirl.com

Questions?
seattle@skatelikeagirl.com

 **seattlecenter**

TRANSFER OF JURISDICTION

- Seattle Center shall be responsible for all costs of the skate plaza.
- Seattle Center shall be the regulatory authority for planning, constructing and managing the skate plaza on the surface of the site. SDOT shall be the regulatory authority for all activities affecting utilities in the Broad St. right-of-way.
- The project will include at least one pedestrian pathway.
- Vehicular access for the SCL Broad Annex shall remain as long as required by SCL.
- Vehicular access through the skate plaza will provide for alley access and service needs of the block to the north of the skate plaza, until access is no longer required.

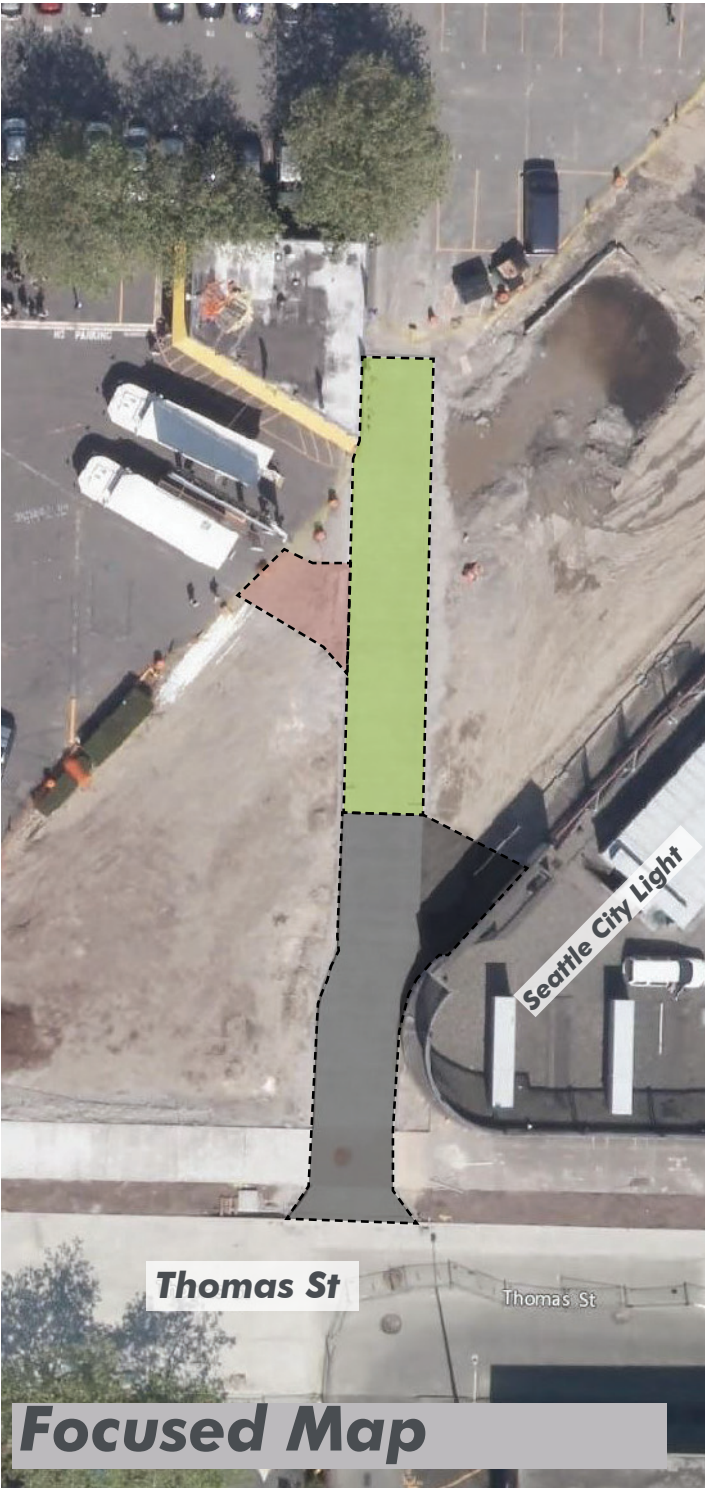
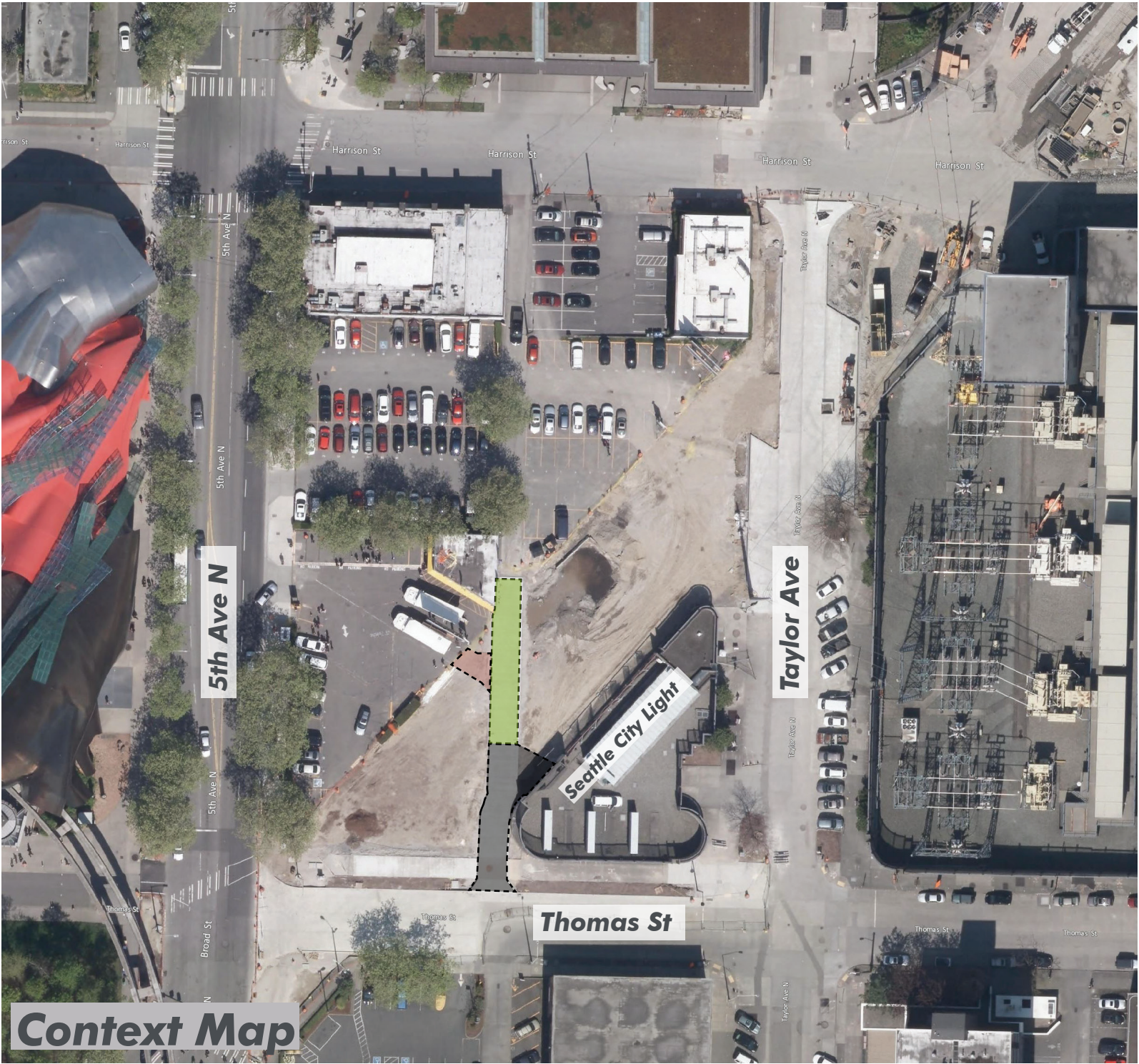
Seattle Center Skate Plaza Site Transfer Ordinance


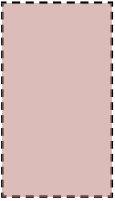


Council Bill 119566

*Passed at Full Council on Monday,
7/22/2019*

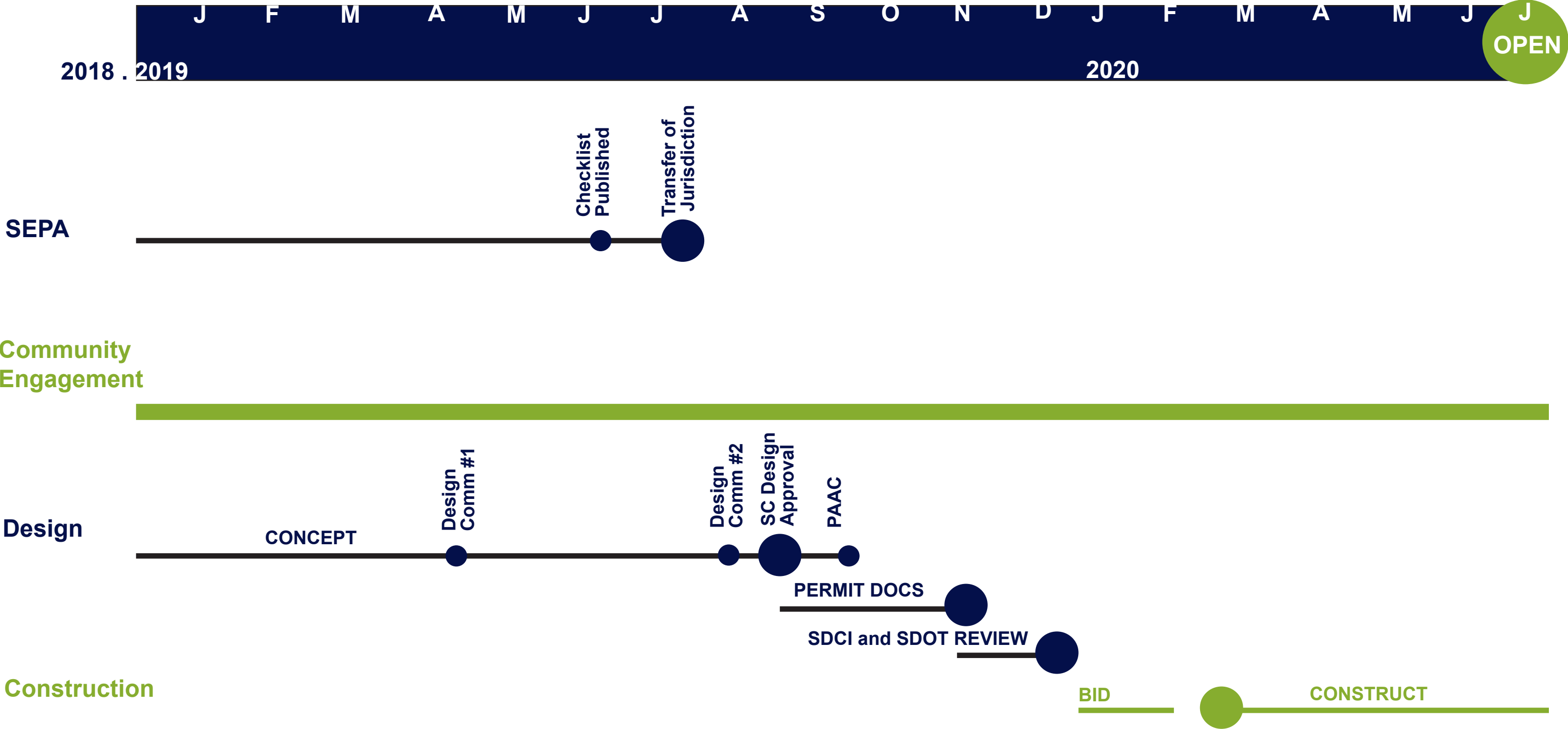
AN ORDINANCE relating to Broad Street; transferring jurisdiction over the portion of Broad Street between Thomas Street and Taylor Avenue North from the Seattle Department of Transportation to the Seattle Center Department for purposes of constructing, operating, and maintaining a public skate plaza.

ANATOMY OF VEHICULAR ACCESS



-  **Connection to North Alley**
-  **Business Ingress**
-  **Seattle City Light Access**
- 

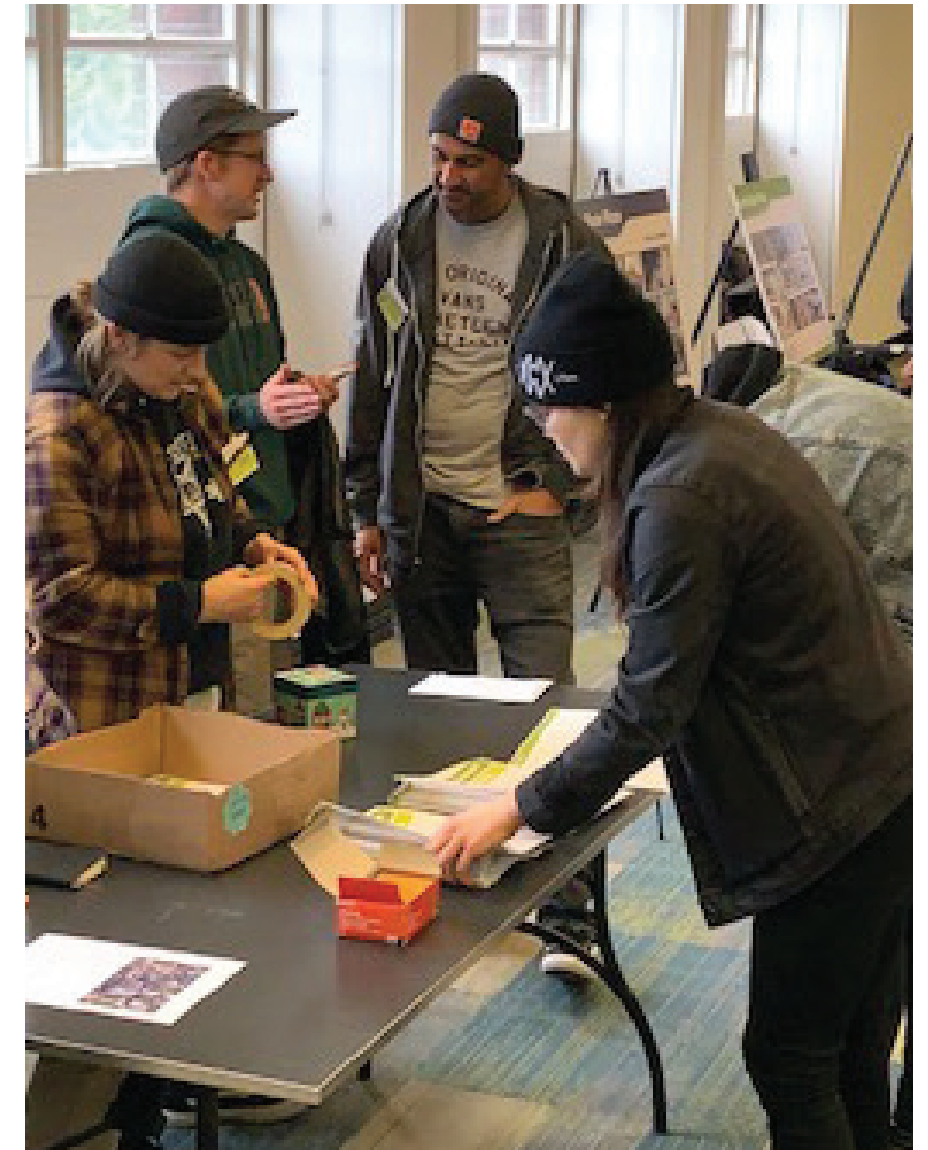
SCHEDULE



OUTREACH



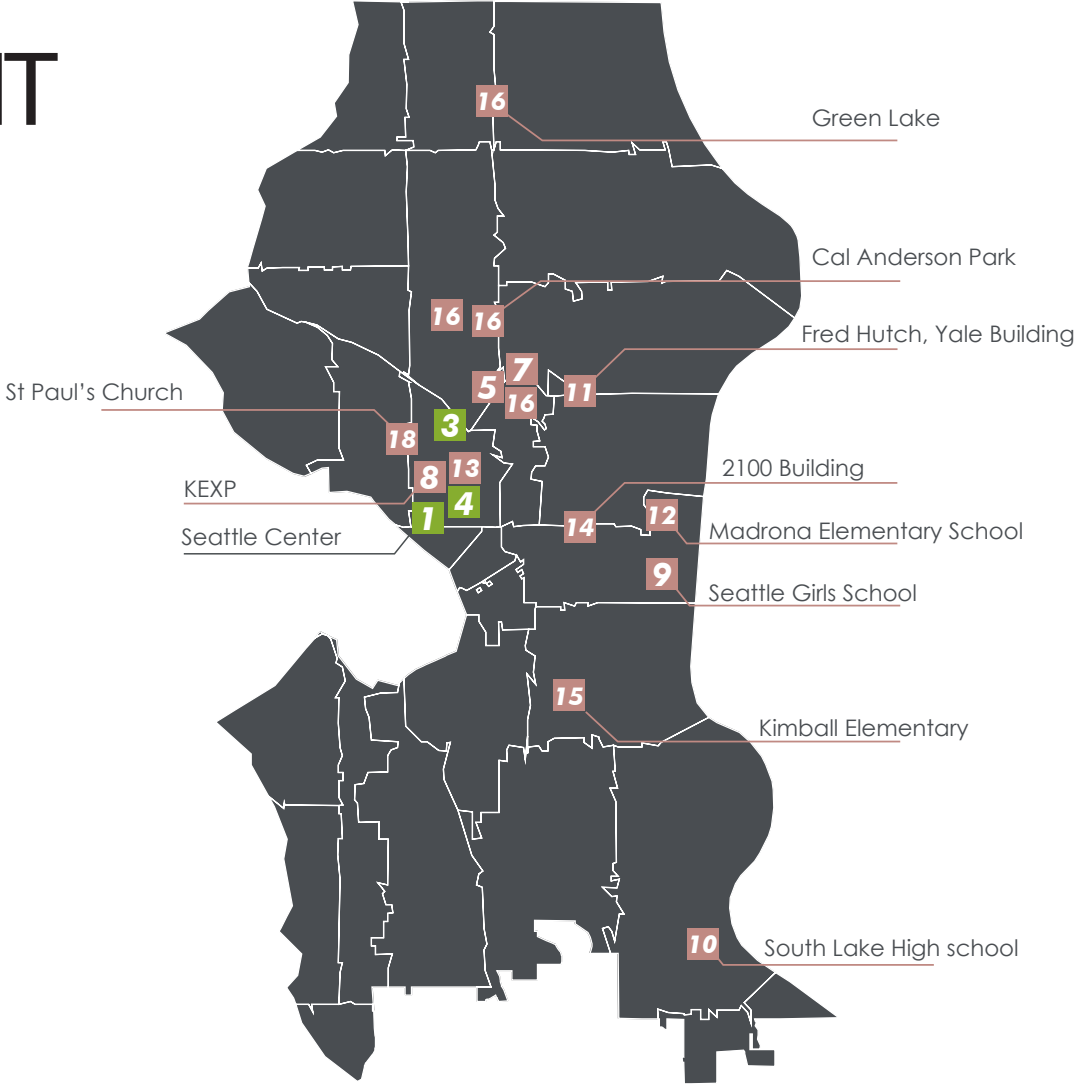
OPEN HOUSE #1



OPEN HOUSE #2



IN PERSON ENGAGEMENT



Phase 1

- 1** Open House 1
- 2** Design Survey 1
- 3** Queen Anne Community Council
- 4** Seattle Center Resident Directors Quarterly Meeting

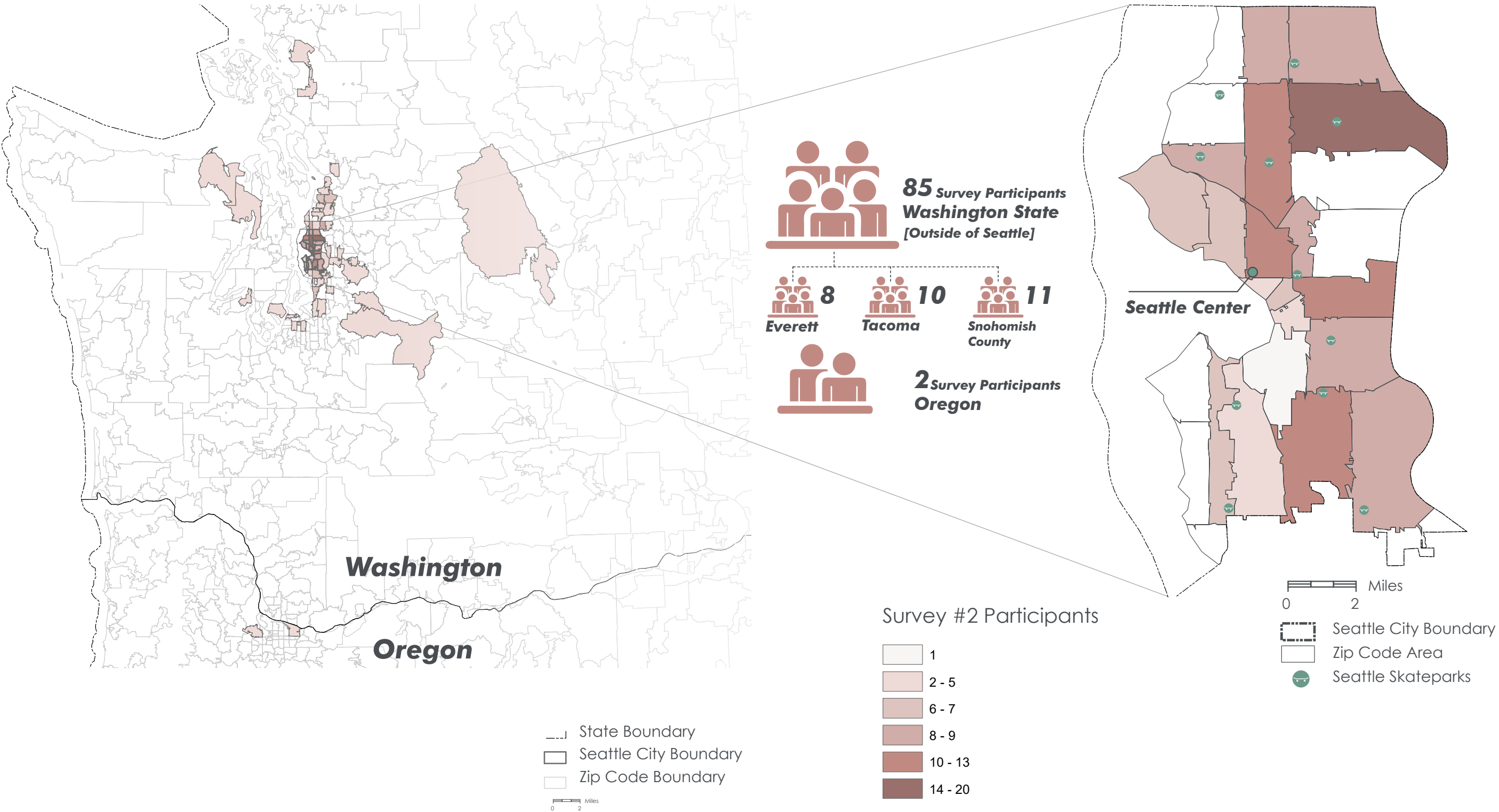
Phase 2

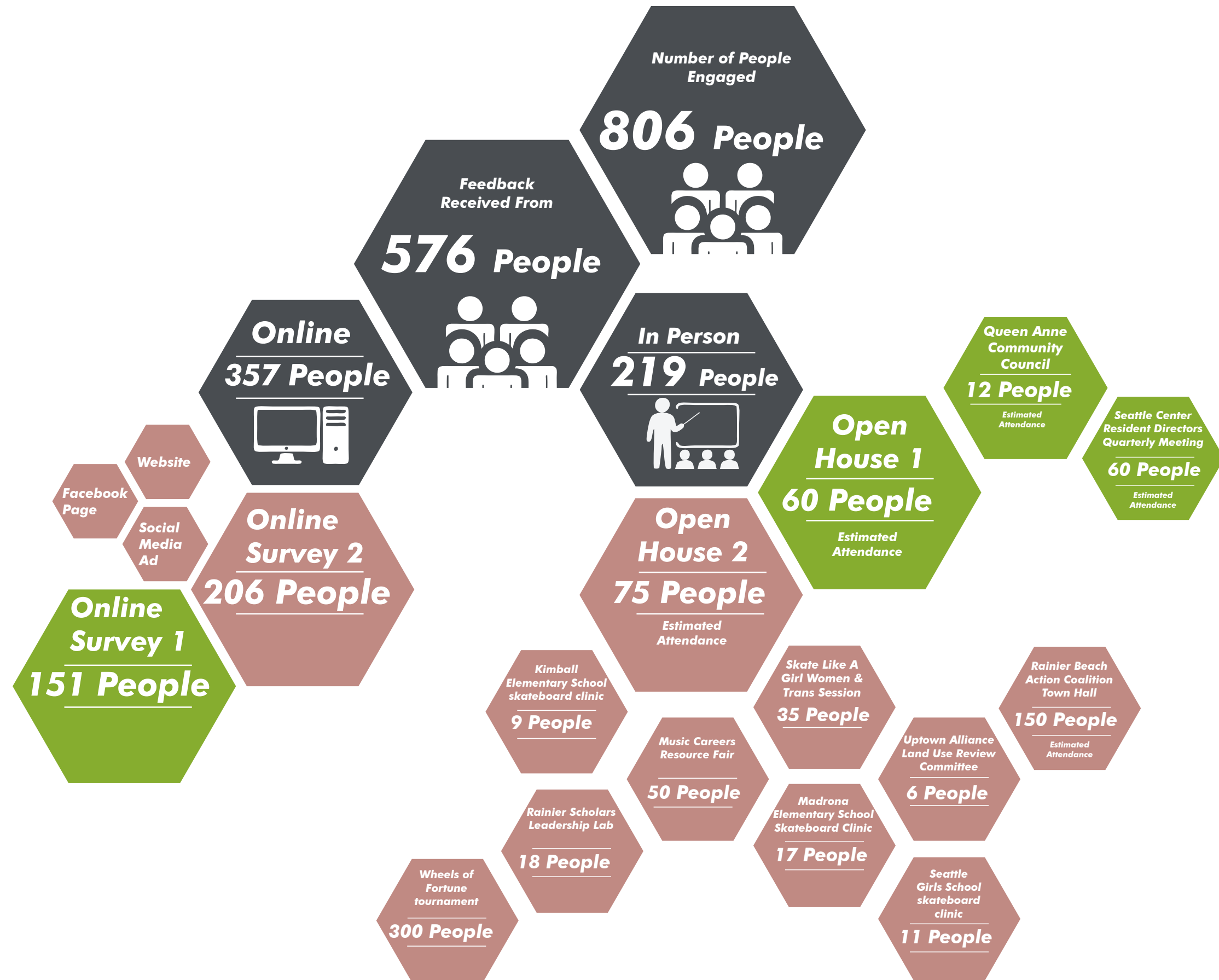
- 5** Open House 2
- 6** Design Survey 2
- 7** Skate Like A Girl Women & Trans Session
- 8** Uptown Alliance Land Use Review Committee
- 9** Seattle Girls School skateboard clinic
- 10** Rainier Beach Action Coalition Town Hall
- 11** South Lake Union Transportation Committee
- 12** Madrona Elementary School Skateboard Clinic
- 13** Music Careers Resource Fair
- 14** Rainier Scholars Leadership Lab
- 15** Kimball Elementary School skateboard clinic
- 16** Wheels of Fortune tournament
- 17** Targeted Social Media ad
- 18** Uptown Alliance Design Open House

ONLINE ENGAGEMENT

Outside City Boundaries

Inside City Boundaries





WHAT WE HEARD

- High level of interest and enthusiasm
- Support for street/plaza style park design, with desire to incorporate some transition features if possible
- Programming is important for broad range of users
- Most popular skate features
- Lighting, cover & program elements
- Plan for roof
- Clear spectator areas, make everyone welcome



“
**Nature
in
the City**
”

Blending natural surroundings/ trees/water with the skatepark would be unique.

“
**Lights
and a
roof**
”

A destination with lights and covered that is free, would be monumental to the skate community.

“
**Skate
Like a
Girl**
”

No matter what's going on in their life or at home kids can come to the skatepark and feel okay for a while

“
**Splash
of Color**
”

Consider how it'll look to tourists taking pictures from the Space Needle!

”
**Street
Features**
”

A transition park will be neglected over time whereas a street style plaza would be a timeless classic of a Seattle skatepark.

”
**Design
for
beginners**
”

Beginners are always more limited on what they can use, compared to advanced skaters

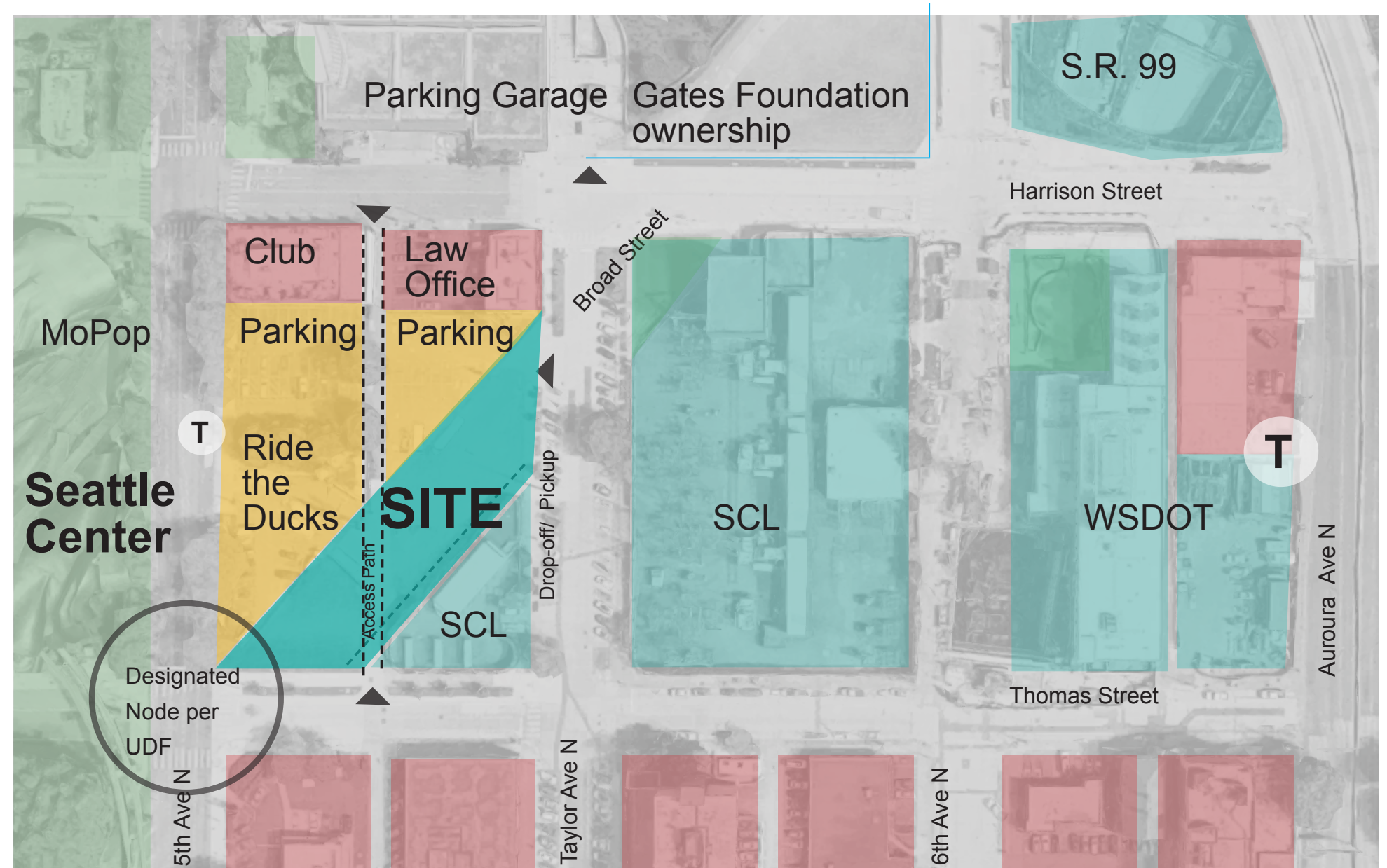
OVERARCHING GOALS

- Provide a high-quality, progression based, learning focused skating facility that best meets the needs of skate community
- In the spirit of the Uptown UDF goals for the Uptown Triangle, activate Thomas Street and Lake 2 Bay corridors, and improve open spaces in an area of growing height and density
- Embody the Seattle Center Master Plan aspiration to enrich and connect to adjacent neighborhoods through welcoming design, programming and operations



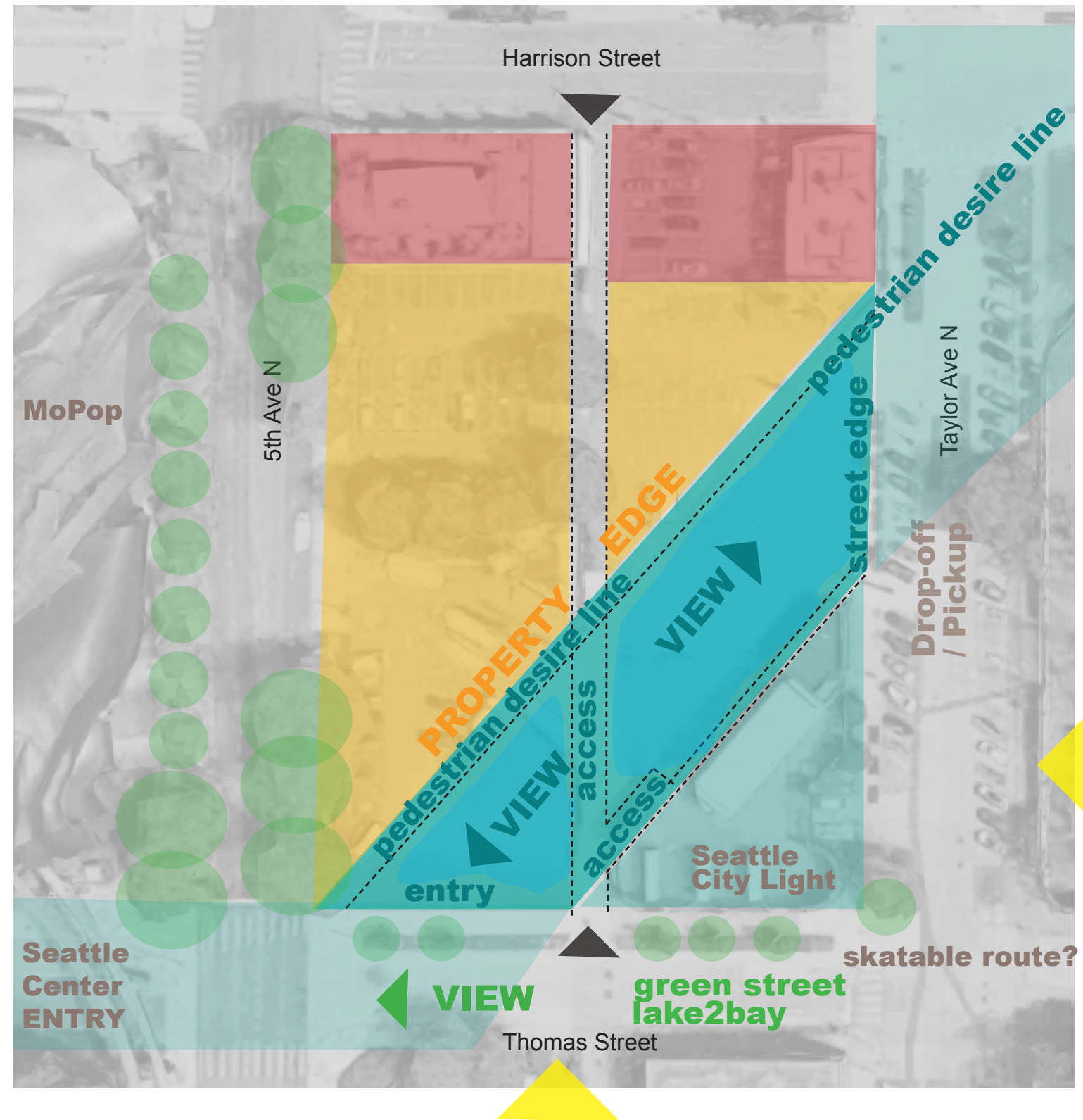
SITE CONTEXT

- Entry to Seattle Center is key
- Thomas is a Green Street and part of Lake to Bay.
- The property on the north side of Thomas is City Light or WSDOT. The skate plaza will provide needed activation along an important green street
- Thomas and Harrison will be pedestrian routes to transit; lighting will help transit patrons feel more comfortable
- The adjacent property to the north is very likely to redevelop



SITE

- Entry at Thomas will be very visible from street level and above, and busy with pedestrians
- Pedestrian routes through the site needed
- Good solar access from south and east long-term
- Vehicular access to SCL required; access through site may be needed at least near term
- Drop off/Pick up works well on Taylor
- Take advantage of views



DESIGN PROCESS

- Focus on skate terrain that best meets the needs of the community
- Make sure conditions are safe
- Design to adapt to future conditions
- Take advantage of site conditions in the design
- Fitting into the neighborhood



PLANTING POCKETS TO RESEMBLE 'EXPLODING GUITAR'



CENTRAL 'ZIGZAG' CORRIDOR WITH SKATE ELEMENTS AND DRAINAGE



SEATING NODES / PLATFORMS SCATTERED THROUGHOUT

PLAN PHASE I

- Design that is easily adapted if access route is removed
- Interim pedestrian safety
- Adaptable skate terrain
- Strategic stormwater facility location

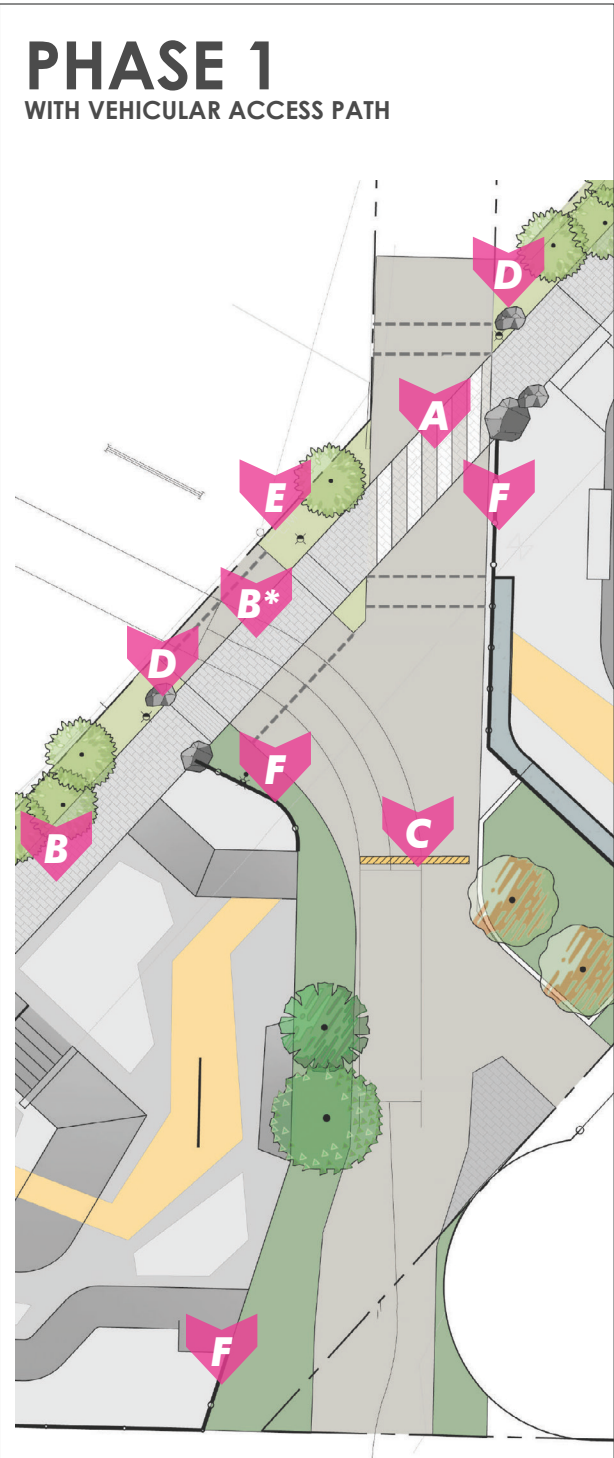


PLAN PHASE II

- Turning movement into SCL remains
- Skatepark reconnected with middle level replacing vehicular space
- Crosswalk removed

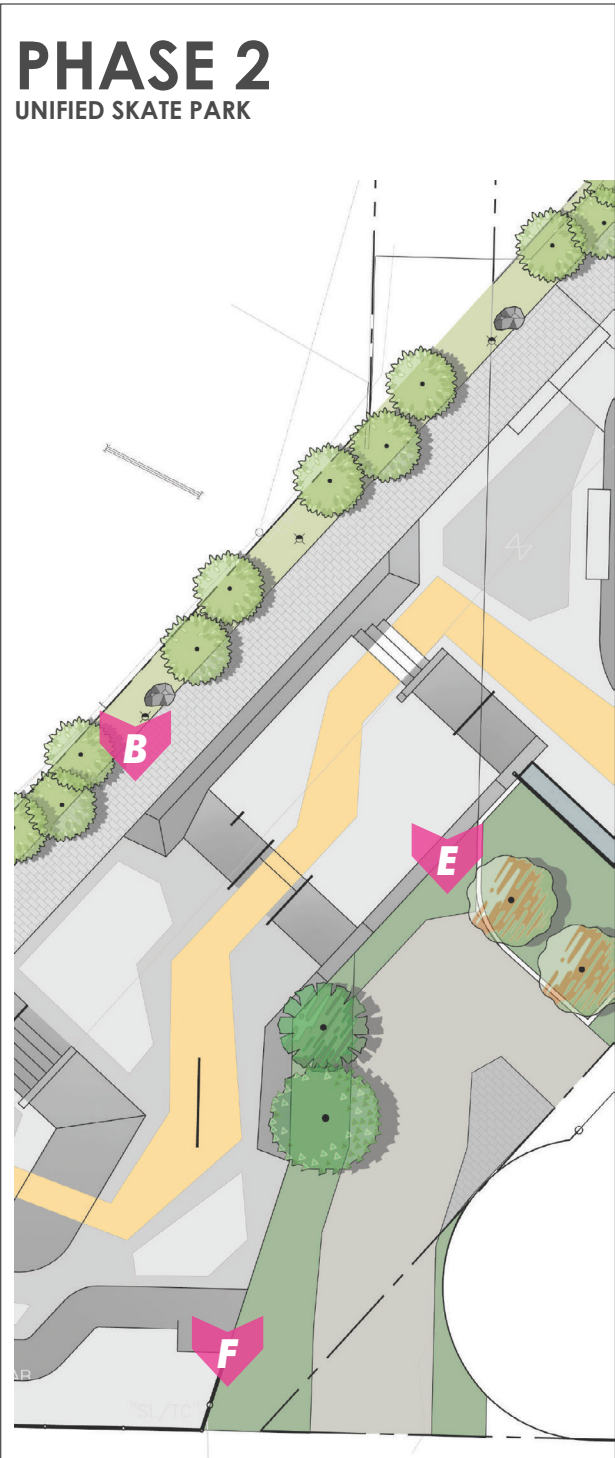


SAFETY



LEGEND

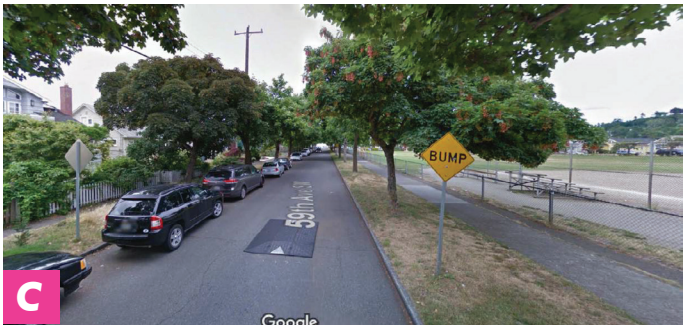
	PLANTED AREA		SKATE AREA		VEHICULAR AREA
--	--------------	--	------------	--	----------------



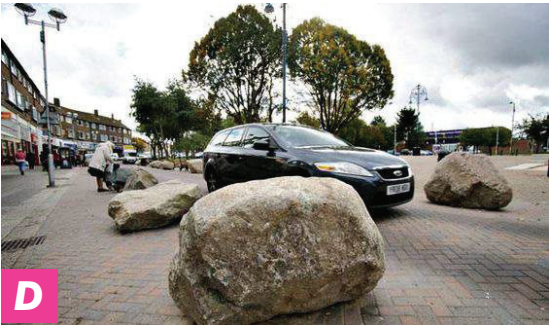
Raised stamped crosswalk



Pedestrian pathway B* Raised pathway



Speed hump/speed cushion and sign



Boulders as bollards



Landscape buffer



39" ht. guardrail

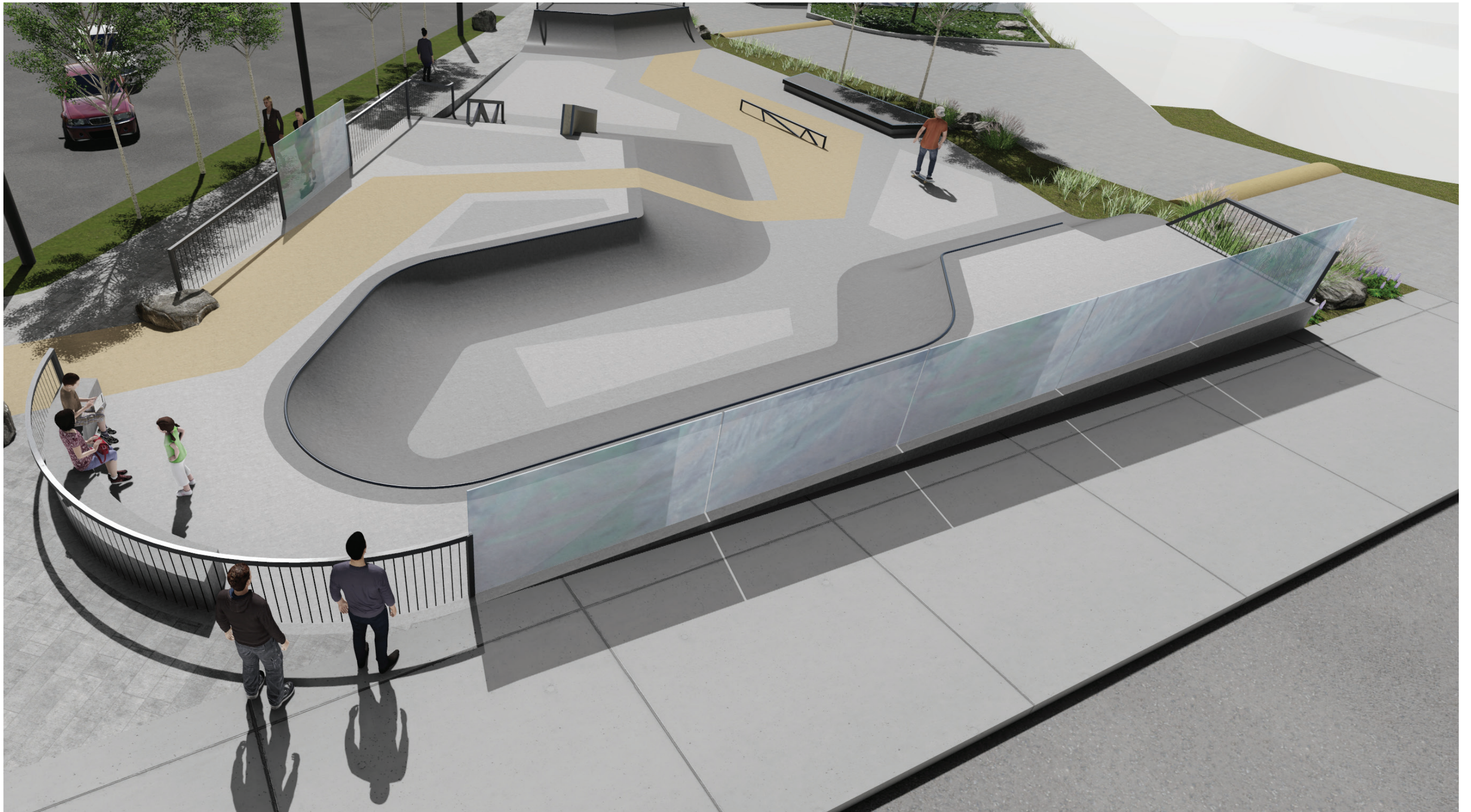
Aerial looking up the hill to the south



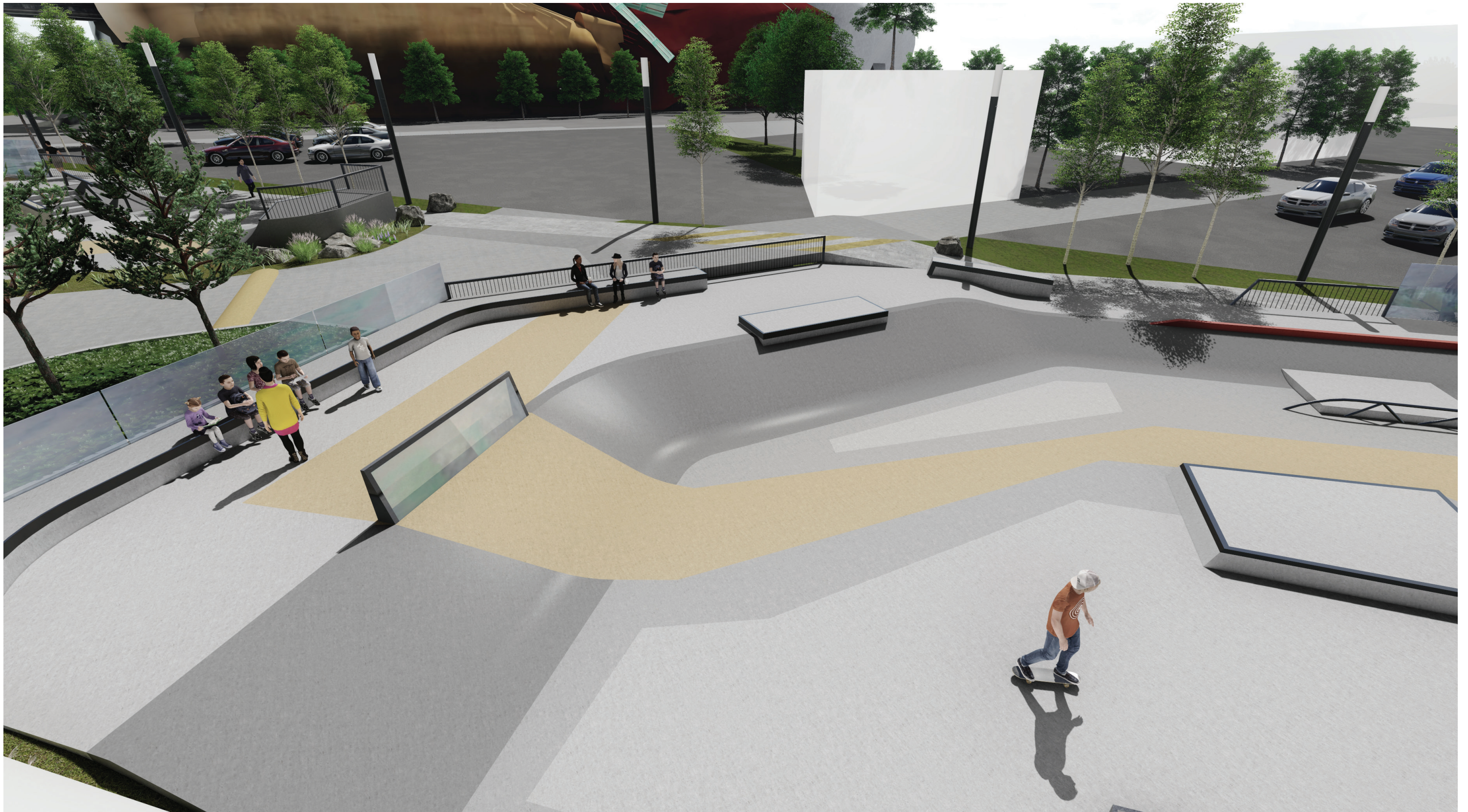
View from dropoff looking uphill to the south



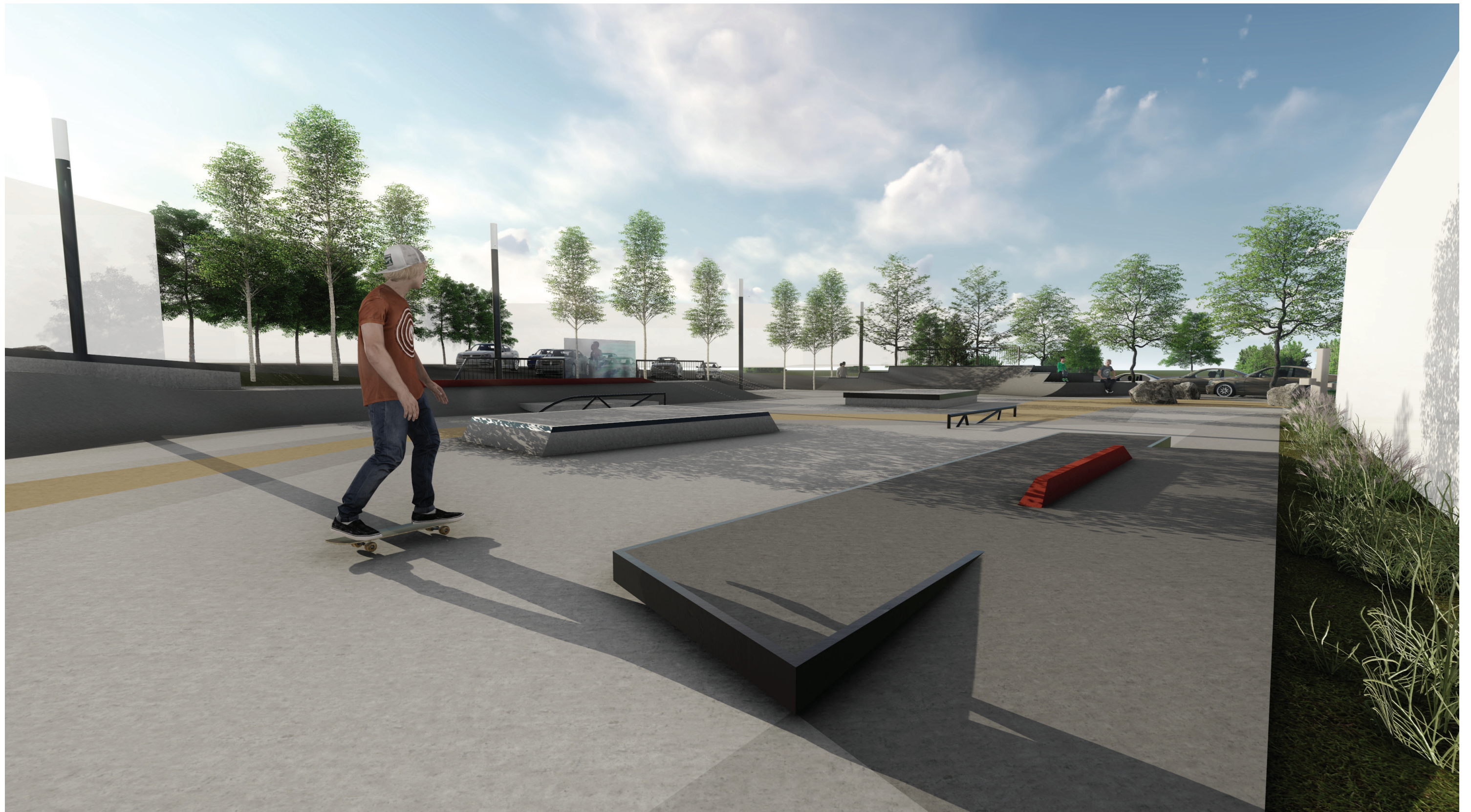
View from Thomas Street looking downhill to the north



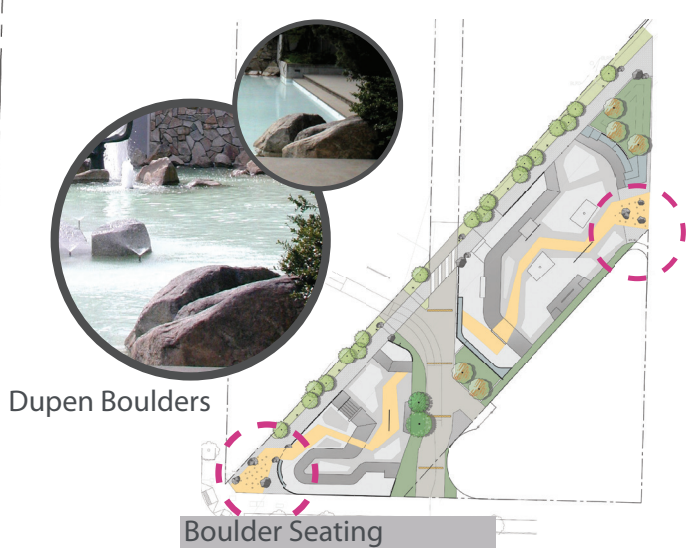
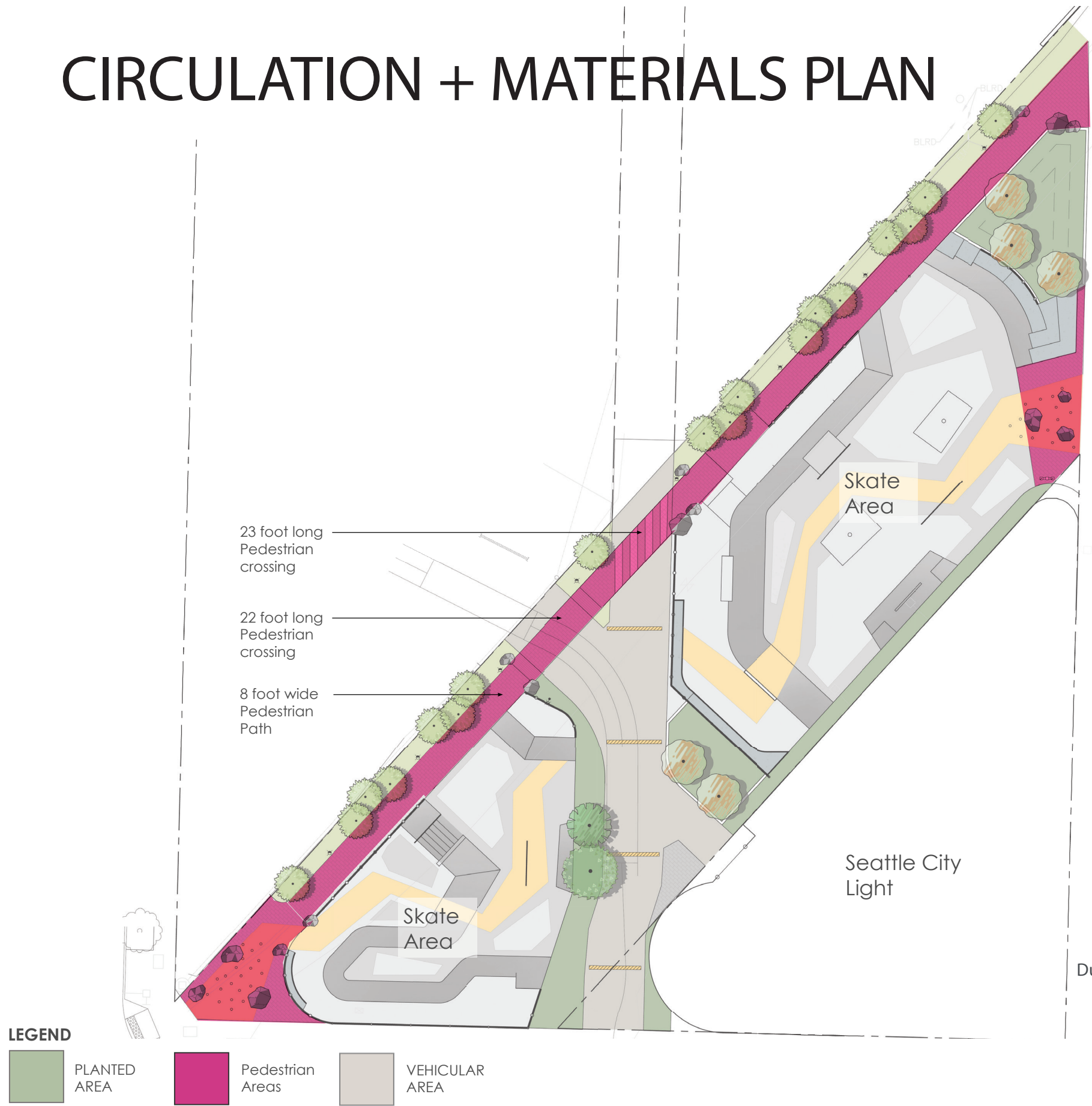
Lower area looking uphill to the south



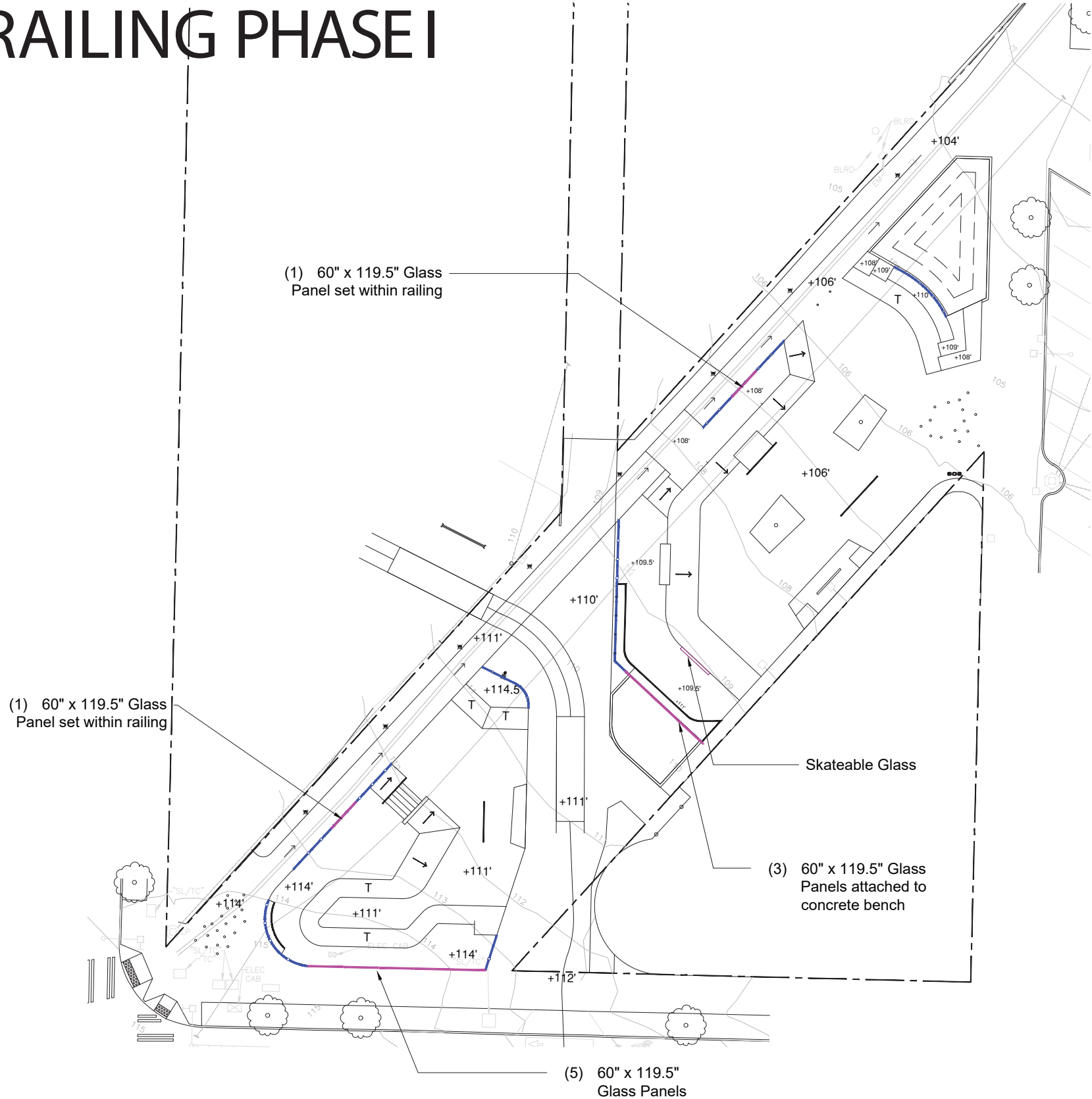
Lower area looking downhill to the north



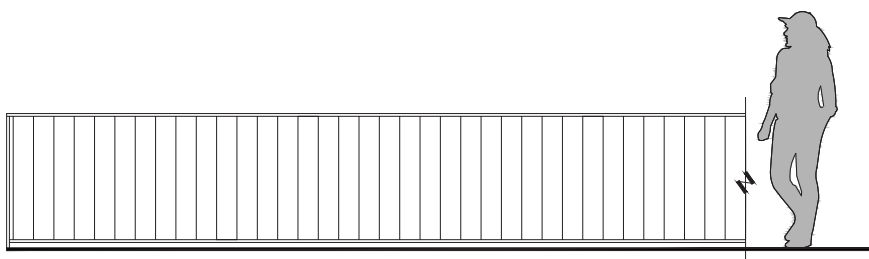
CIRCULATION + MATERIALS PLAN



RAILING PHASE I



- 39" Ht. Simple Metal Railing
- 60" x 119.5" Original Glass Artwork



Guard rail design - base design



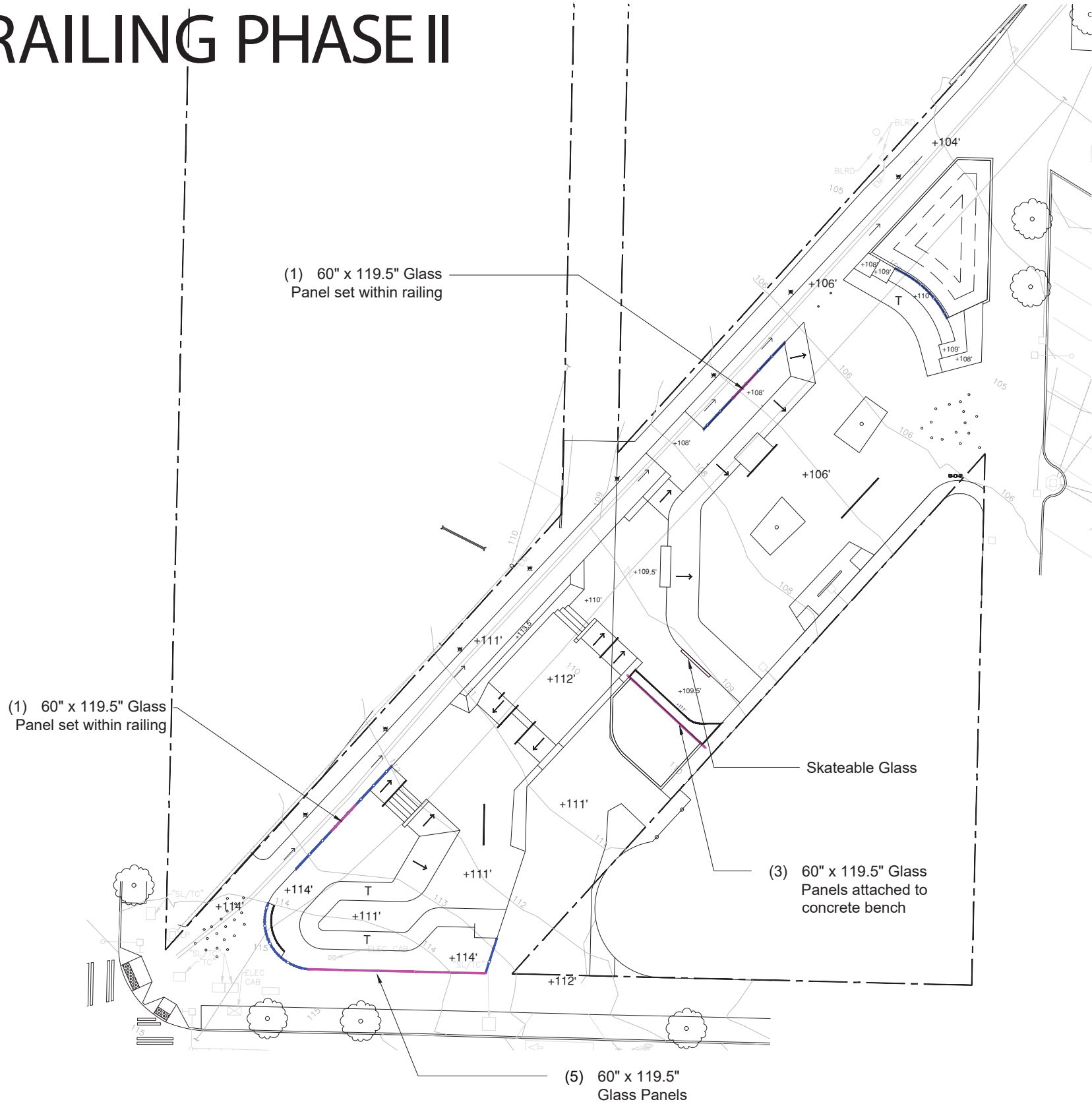
(x2) Glass panel set within railing
Note: image shows glass inlay panel for representation only, does not indicate final location



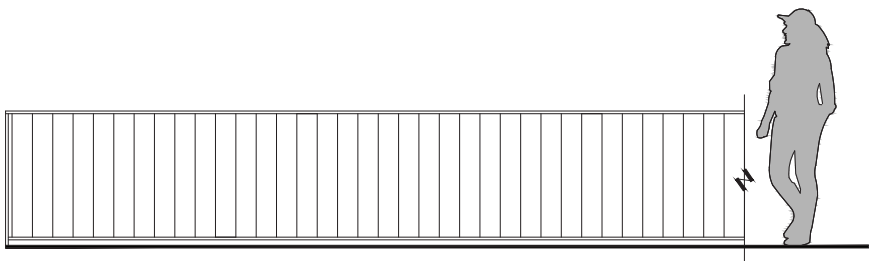
(5) Glass Panels along Thomas Street
Note: image shows glass inlay panel for representation only, does not indicate final location



RAILING PHASE II



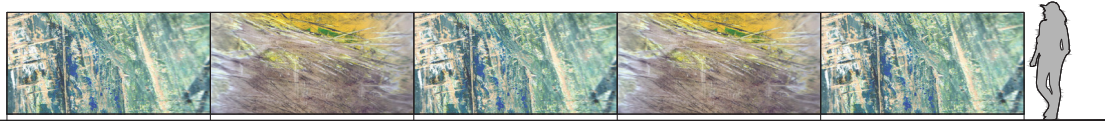
- 39" Ht. Simple Metal Railing
- 60" x 119.5" Original Glass Artwork



Guard rail design - base design



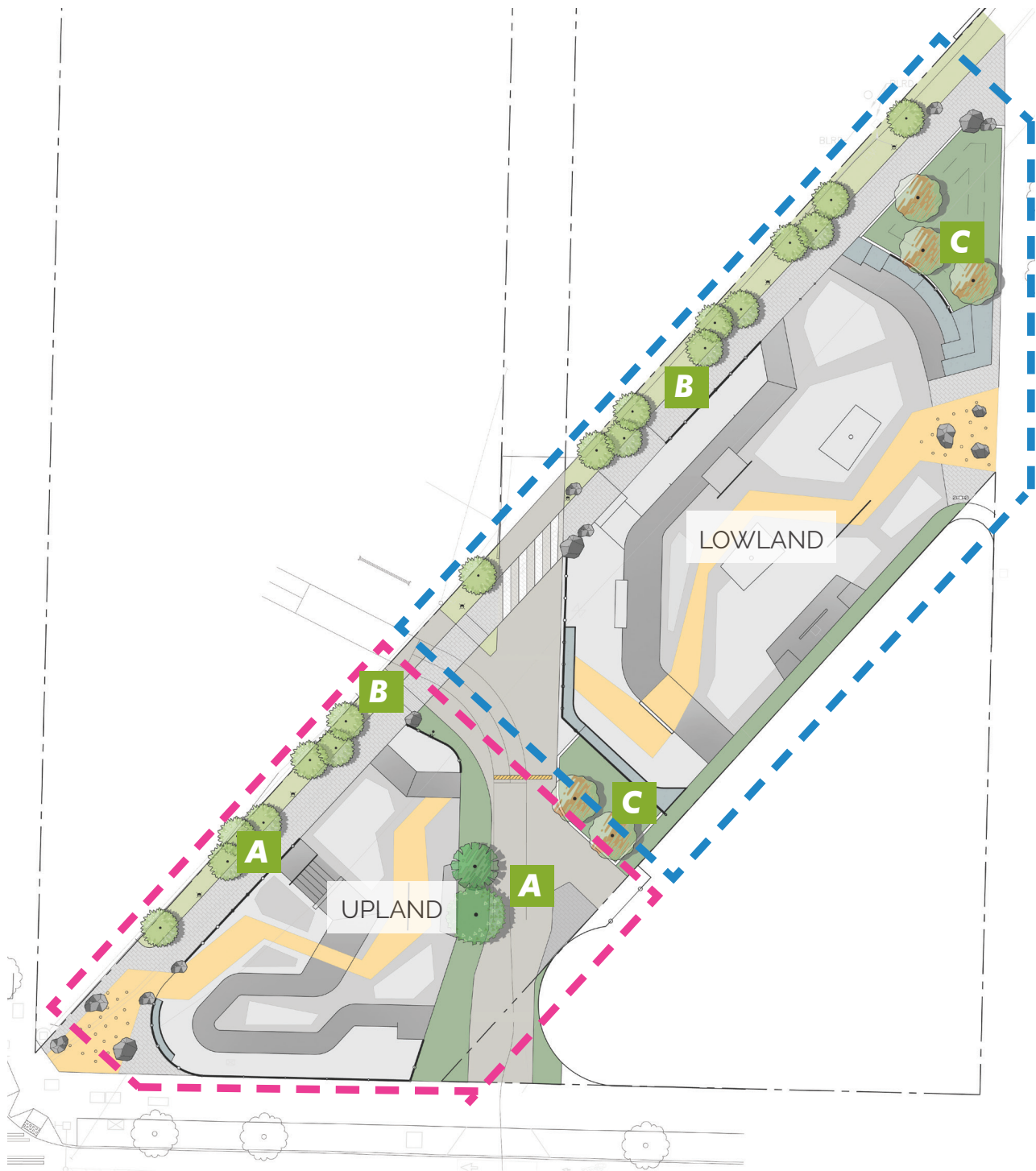
(x2) Glass panel set within railing
Note: image shows glass inlay panel for representation only, does not indicate final location



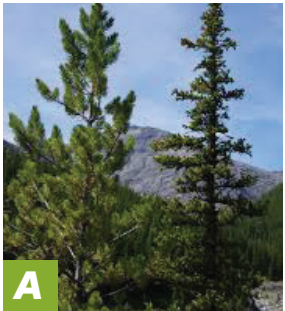
(5) Glass Panels along Thomas Street
Note: image shows glass inlay panel for representation only, does not indicate final location



LANDSCAPE PHASE I



Uplands Planting



Shore pines



Trembling aspens



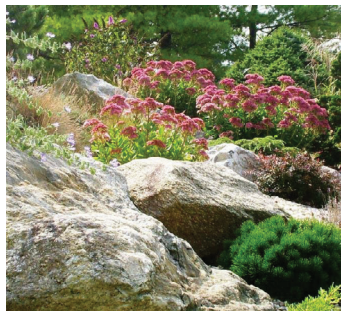
Small camas



Native sedges

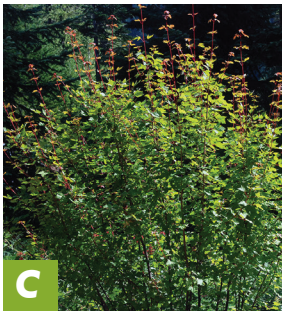


Mountain huckleberries



Boulders/Outcropping

Lowlands Planting



Douglas maples



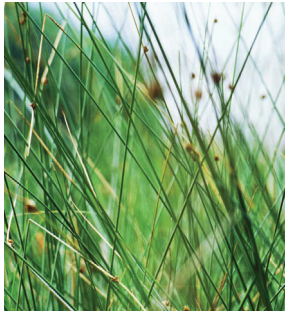
Ferns



Spireas



Lupins



Blue rushes



Native sedges

LANDSCAPE PHASE II



Uplands Planting



Shore pines



Trembling aspens



Small camas



Native sedges



Mountain huckleberries



Boulders/Outcropping

Lowlands Planting



Douglas maples



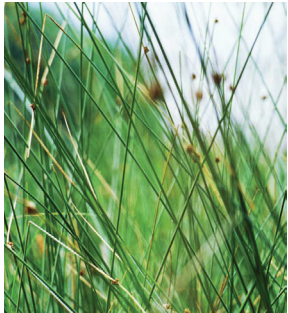
Ferns



Spireas



Lupins

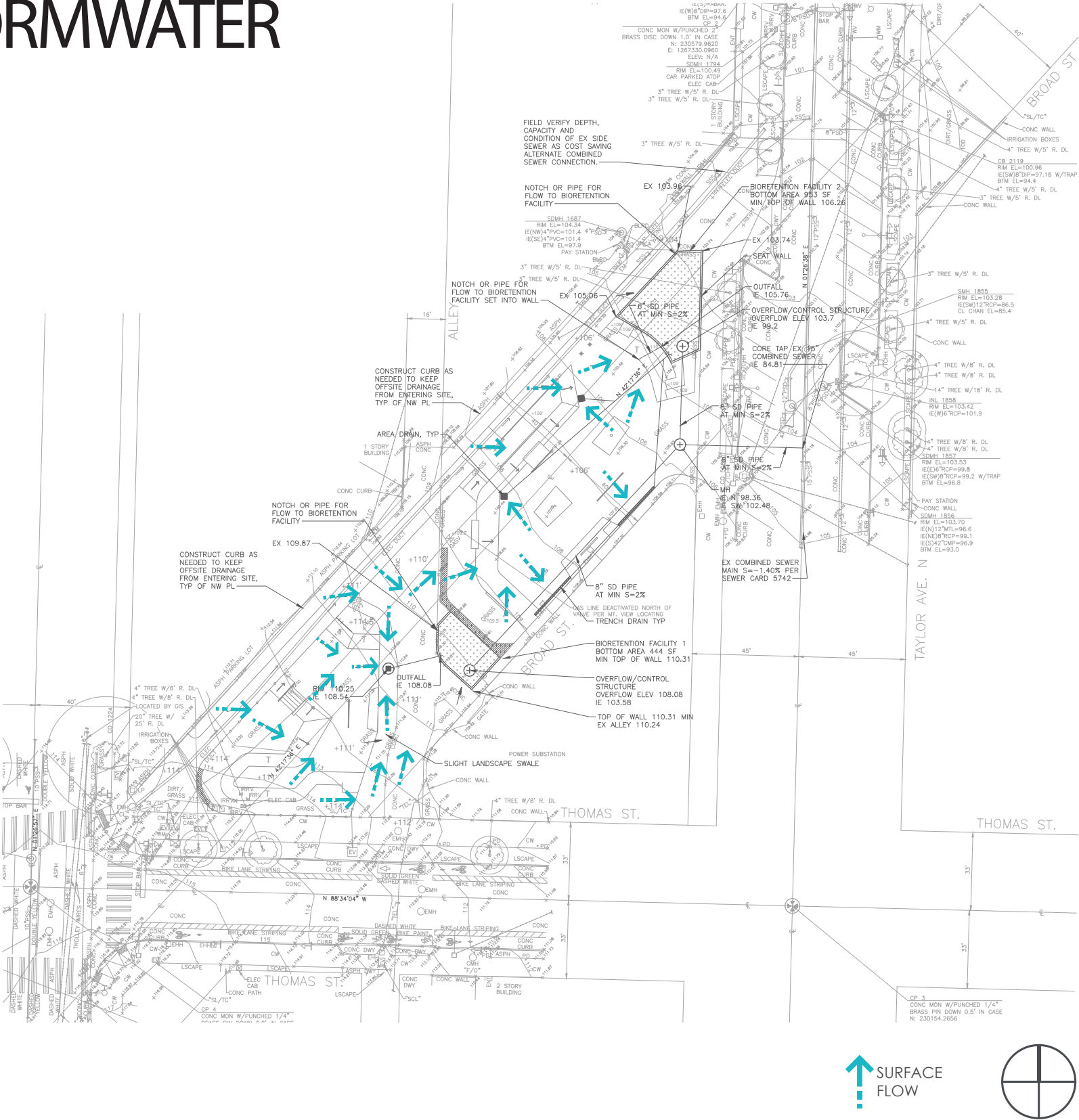


Blue rushes



Native sedges

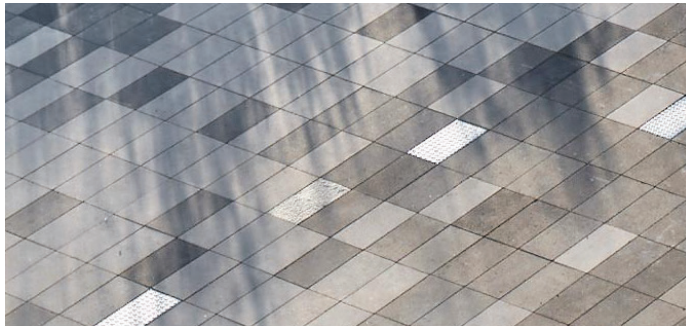
STORMWATER



- 1. All stormwater accommodated in locations that will not need to change for Phase 2
- 2. Bioretention located on the north (downhill) sides of upper and lower skate areas
- 3. Attractive landscaped retainage areas



Rain Gardens/ Bioswales



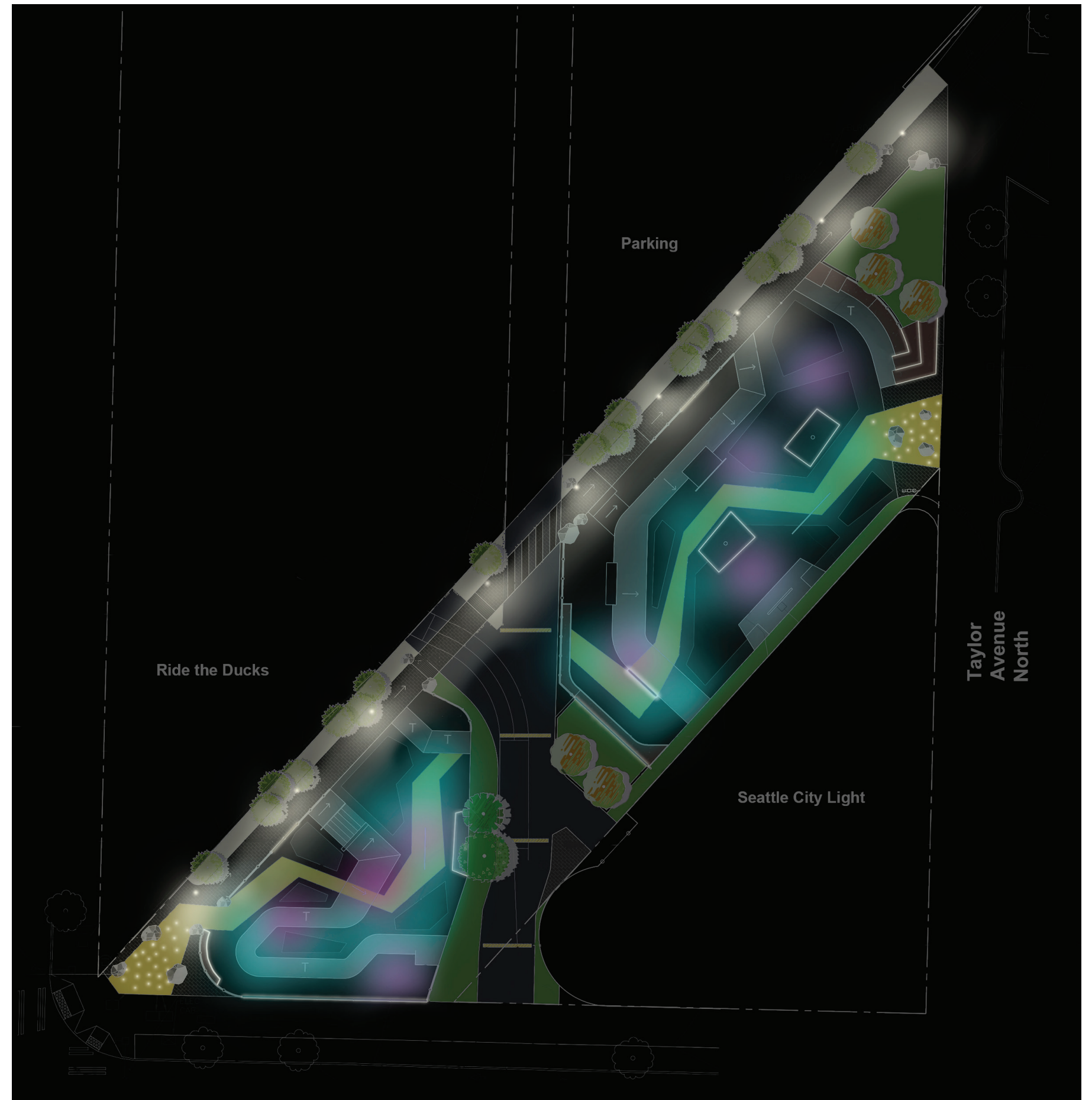
Permeable Paving



Bioretention

LIGHTING PHASE I

- Pedestrian lighting along path
- Lighting for skating after dark and for artistic effect still uncertain pending cost estimate. Conduit in place Phase 1
- Minimal revision required for Phase II unified plan



ART CONCEPT

dichotomy

| dī'kädəmə |

noun (pl. dichotomies) [usu. in sing.]

a division or contrast between two things that are or are represented as being opposed or entirely different. In myth, literature, and cultural traditions, dichotomies may exist within one character or a single situation.

Body | Soul

Send | Receive

Theory | Practice

Real | Imaginary

Order | Chaos

True | False

Urban | Rural

Thinking | Feeling

Hard | Soft

Home | Away

Vertical | Lateral

Savage | Civilized

Weak | Strong

Here | There

Teaching | Learning

Focused | Diffuse

Fast | Slow

Inside | Outside

Generative | Iterative

ART CONCEPT

DICHOTOMY is the conceptual approach for the Seattle Center Skate Plaza. This concept initially arose from the binary nature of the site itself, and has evolved to reflect the use patterns, programming, and goals for the project.

This plaza is designed for the raw beginner and experienced skater. It is a place for skateboarding that also welcomes pedestrians and visitors. It is an urban form with an organic flow.

Dichotomies set up situations of contrast that challenge us to find the connections. The role of art in this project is to make those connections visible.



ART METHODS

The artwork for the Seattle Center Skate Plaza supports the dichotomy theme by introducing glass a basis for comparison for the rugged skate terrain. It is designed to increase the legibility of the dual nature of the plaza as a skateboarding destination that is also welcoming to and inclusive of pedestrians and spectators.



Capitalizing on the consistent slope of the site itself, the plaza reads very differently from low point to high, vs. high point to low. The artwork will be placed at various intervals to lead the one through the plaza marking places of contrast as points of connection.

The glass (and lighting) introduces transparency to balance the opacity of concrete, brings a delicacy to the ruggedness of the skate terrain, and provides a safe attractive edge between the inside of the plaza and the outside world.

ART INVENTORY



#12 1 section of "skateable" glass that is 136"H x 66"W x 5/8" D

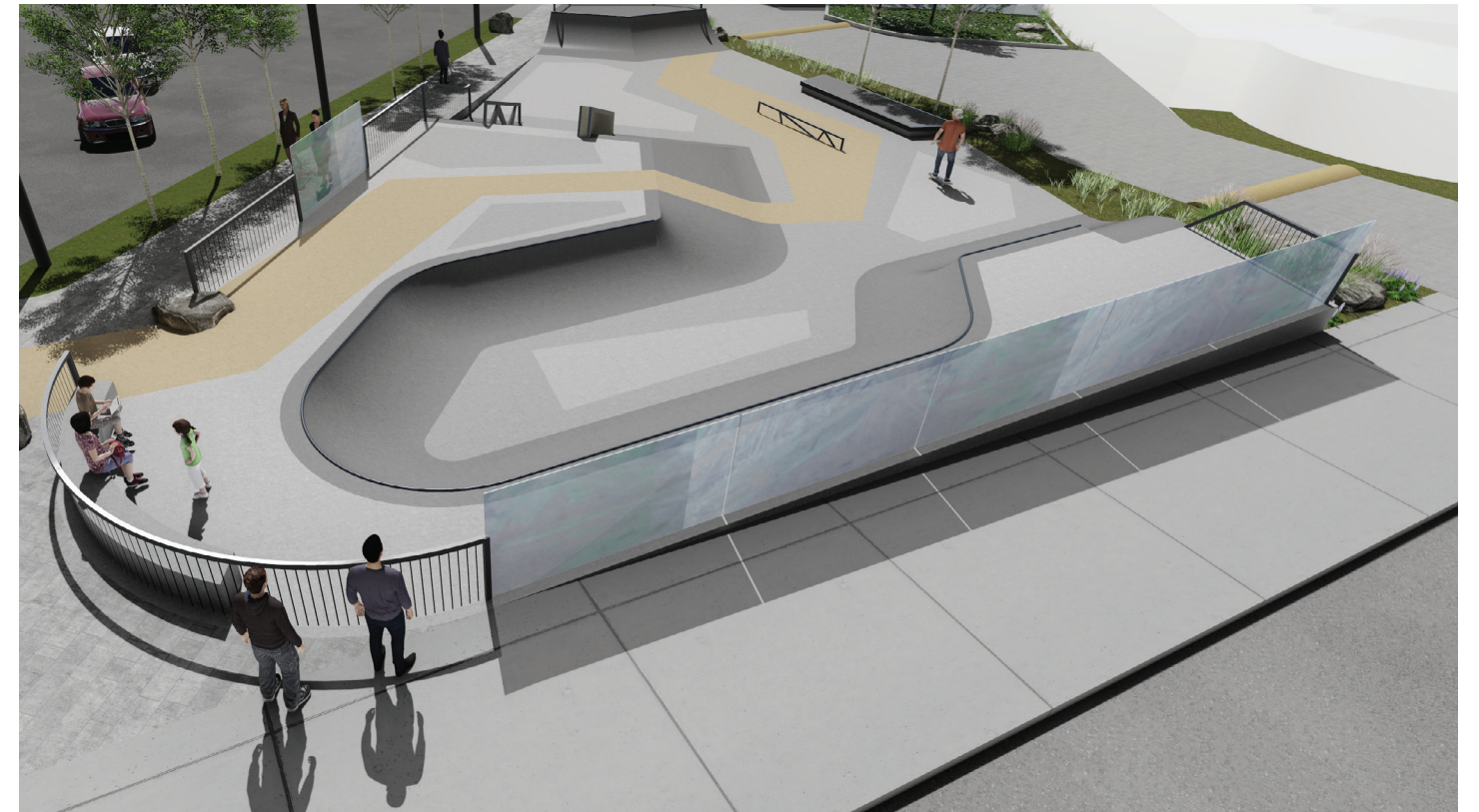


#1-10 10 sections of glass that are 60"H x 119"L x 9/16" D

#11 1 section of glass that is approx 112"H x 36"W x 9/16"D (blue glass that needs to be remanufactured)

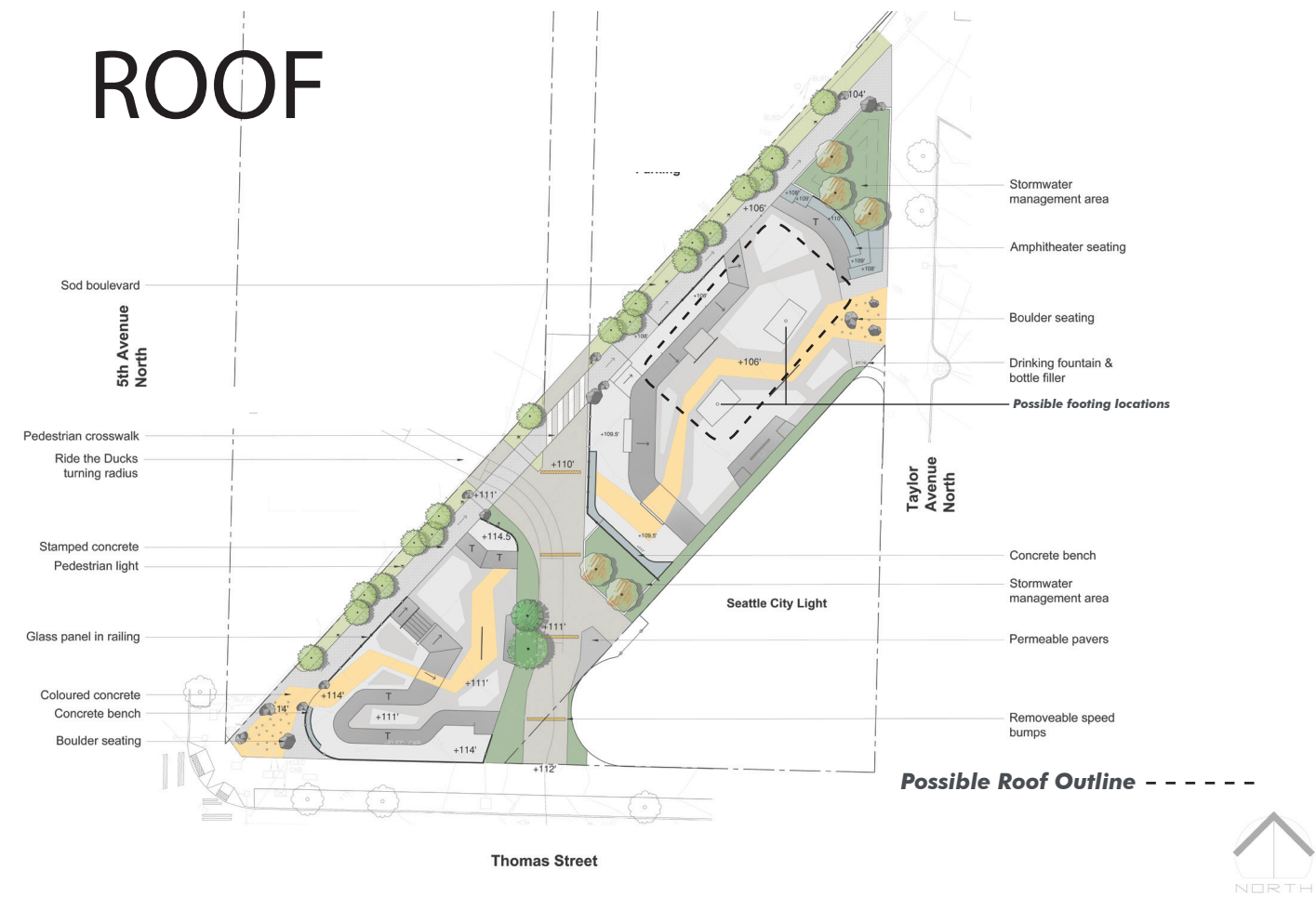


ART LOCATIONS

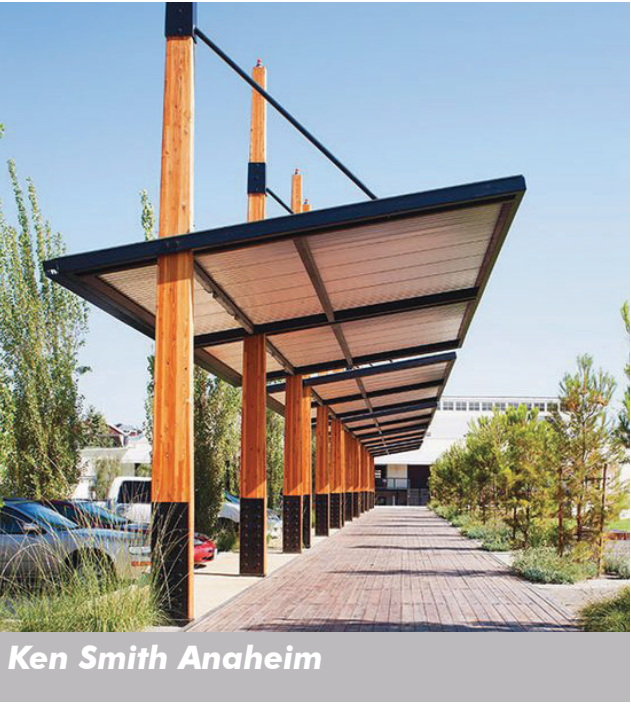
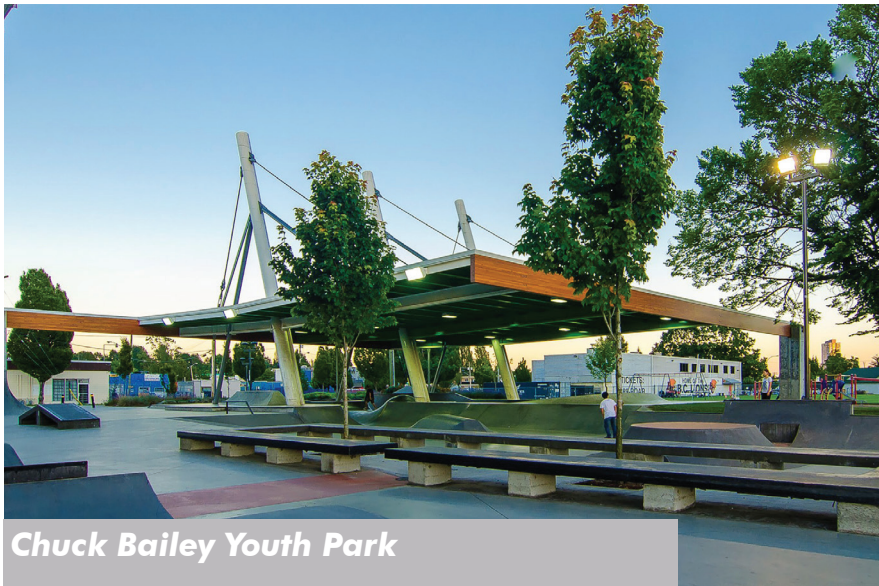


ENHANCEMENT OPPORTUNITIES

ROOF



Roof Structure Precedents



LIGHTING FOR EVENING SKATING



ENHANCED EXPERIENCIAL LIGHTING OPPORTUNITIES

Lighting the art glass
Pedestrian Plazas

