

Alaskan Way Viaduct & Seawall Replacement Program



Seattle Design Commission
March 17, 2011

Alaskan Way Viaduct & Seawall Replacement Program

Goals and Objectives

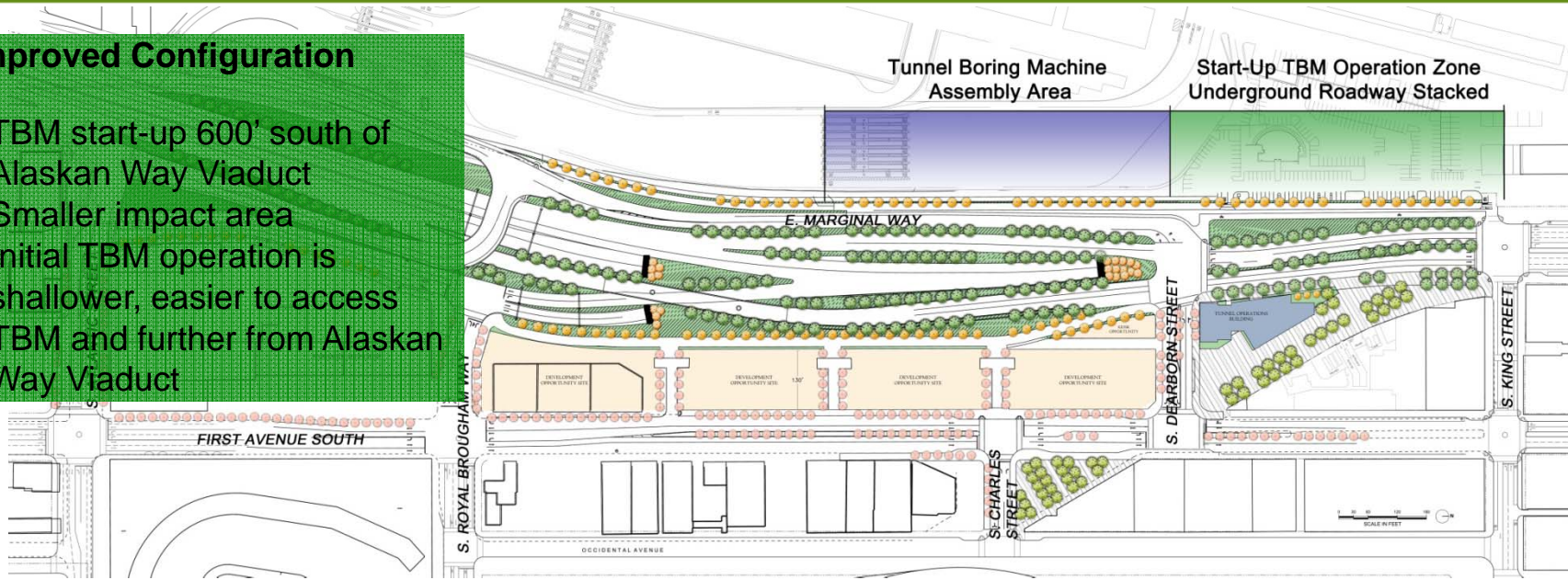
To illustrate that the improved South Portal configuration maintains the original vision and intent of the guidelines and guiding principles, provides additional opportunities for integration into the urban environment, and provides positive benefits for both drivers and pedestrians.



Alaskan Way Viaduct & Seawall Replacement Program

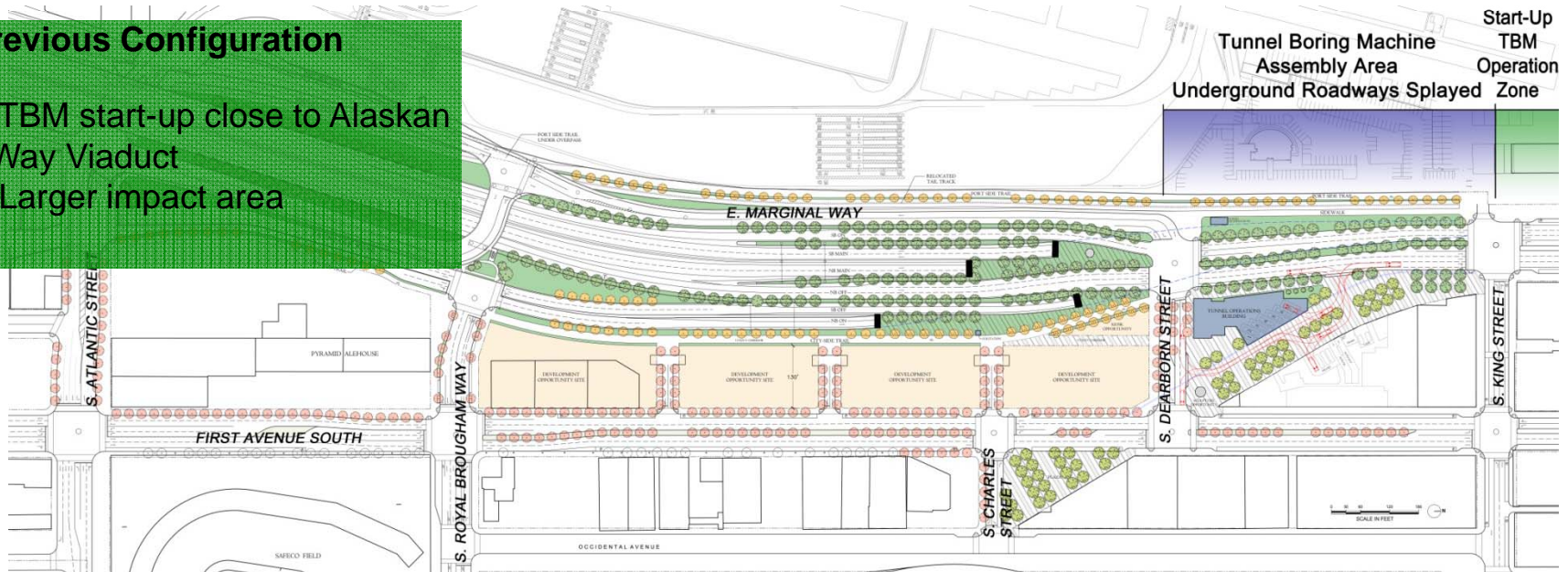
Improved Configuration

- TBM start-up 600' south of Alaskan Way Viaduct
- Smaller impact area
- Initial TBM operation is shallower, easier to access TBM and further from Alaskan Way Viaduct

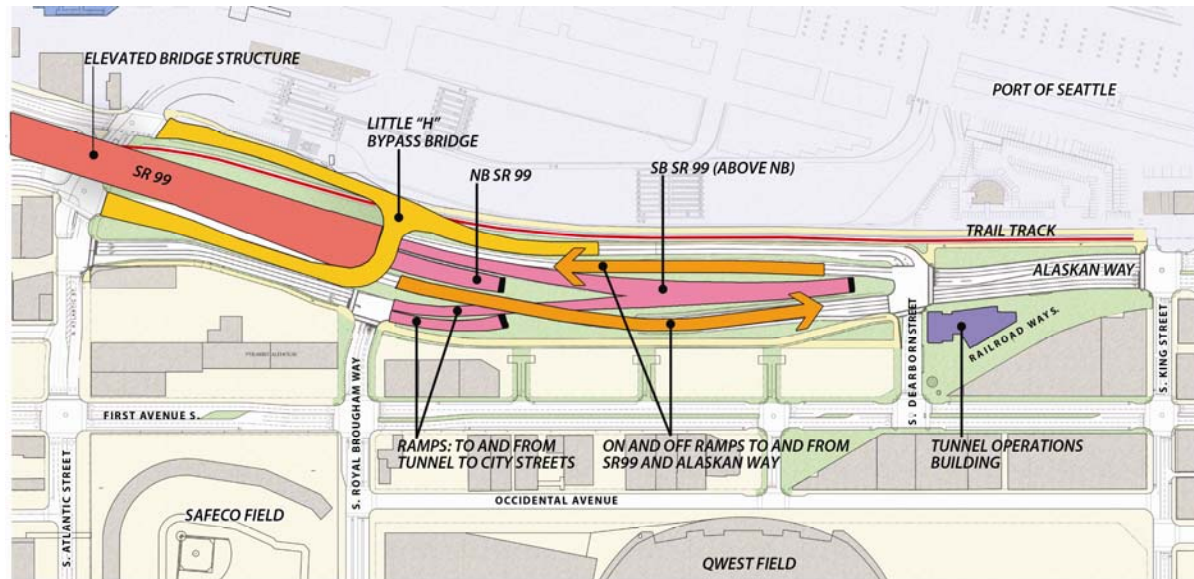


Previous Configuration

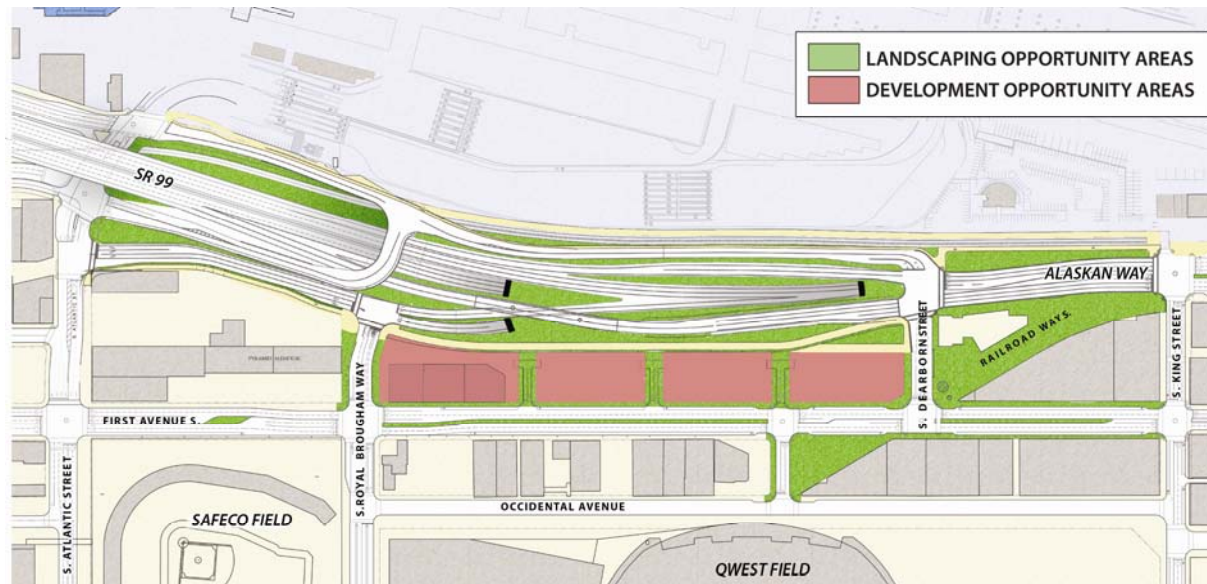
- TBM start-up close to Alaskan Way Viaduct
- Larger impact area



Alaskan Way Viaduct & Seawall Replacement Program

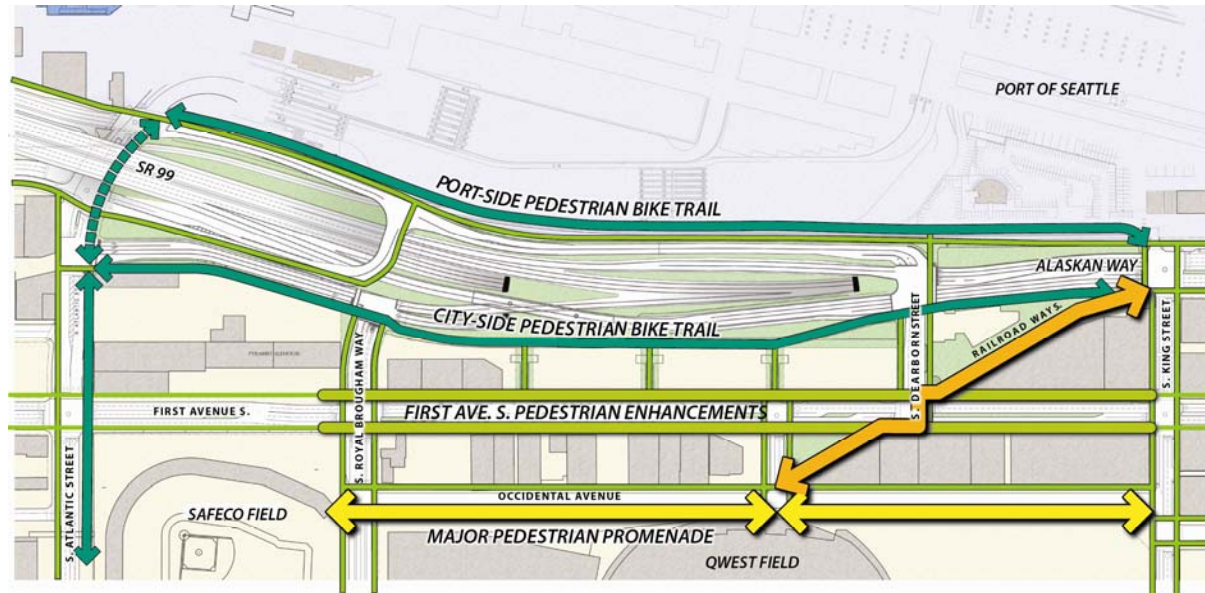


Portals & Connections

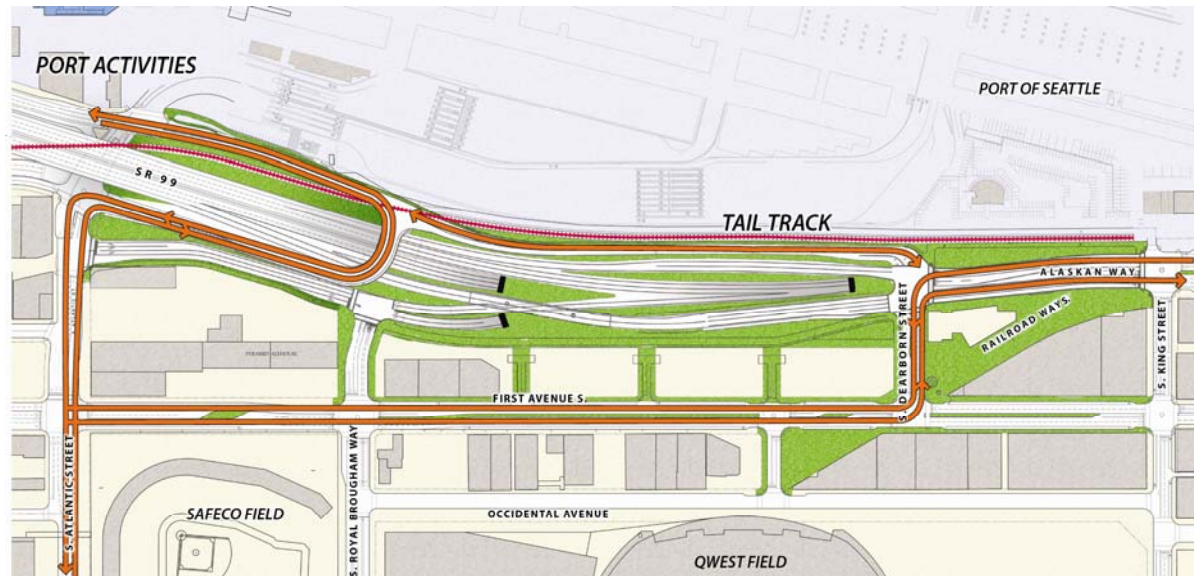


Open Space & Development

Alaskan Way Viaduct & Seawall Replacement Program

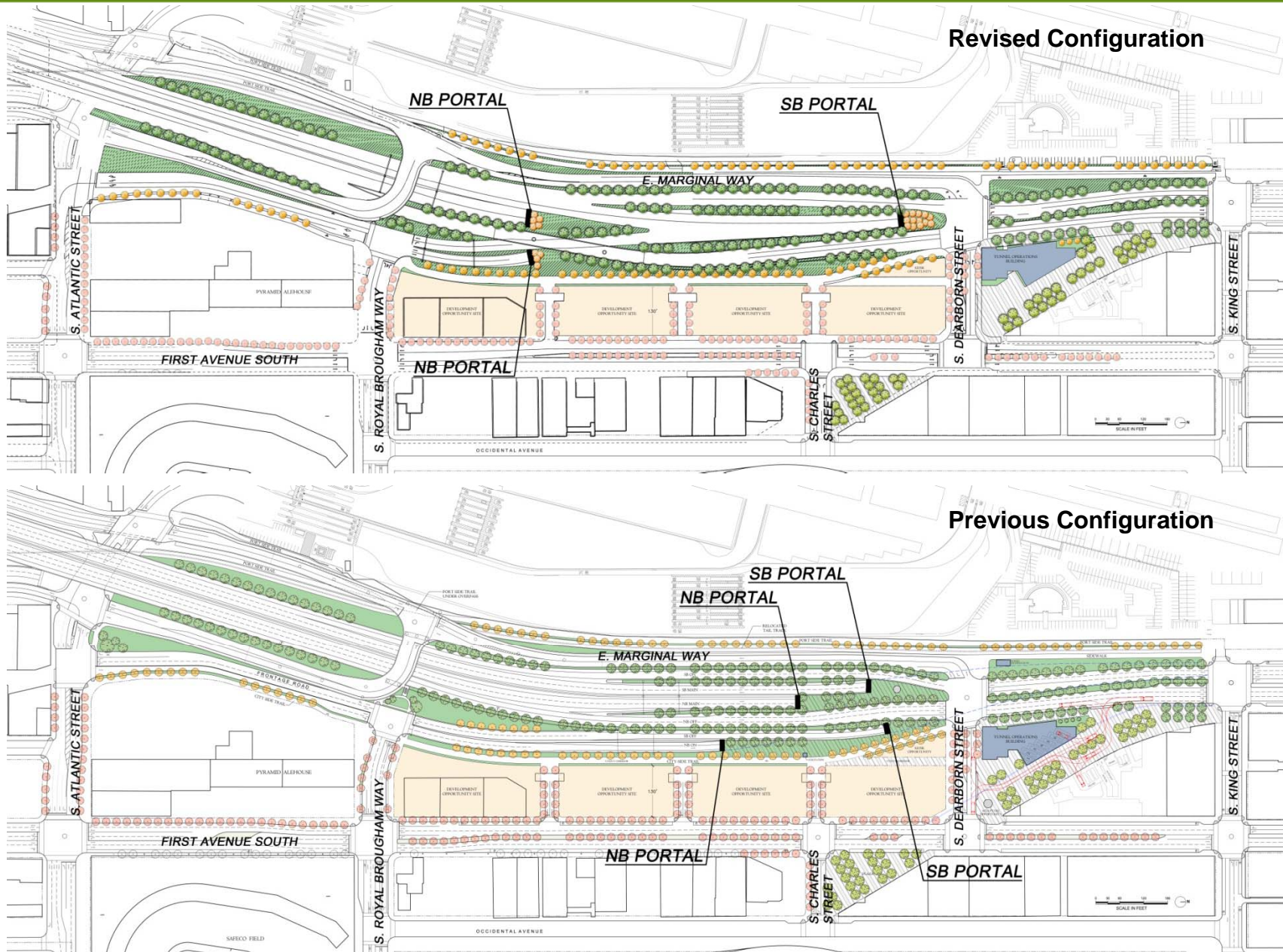


Bicycle & Pedestrian Movement



Access To SR 519 & Waterfront

Alaskan Way Viaduct & Seawall Replacement Program



Alaskan Way Viaduct & Seawall Replacement Program

Available Open Space

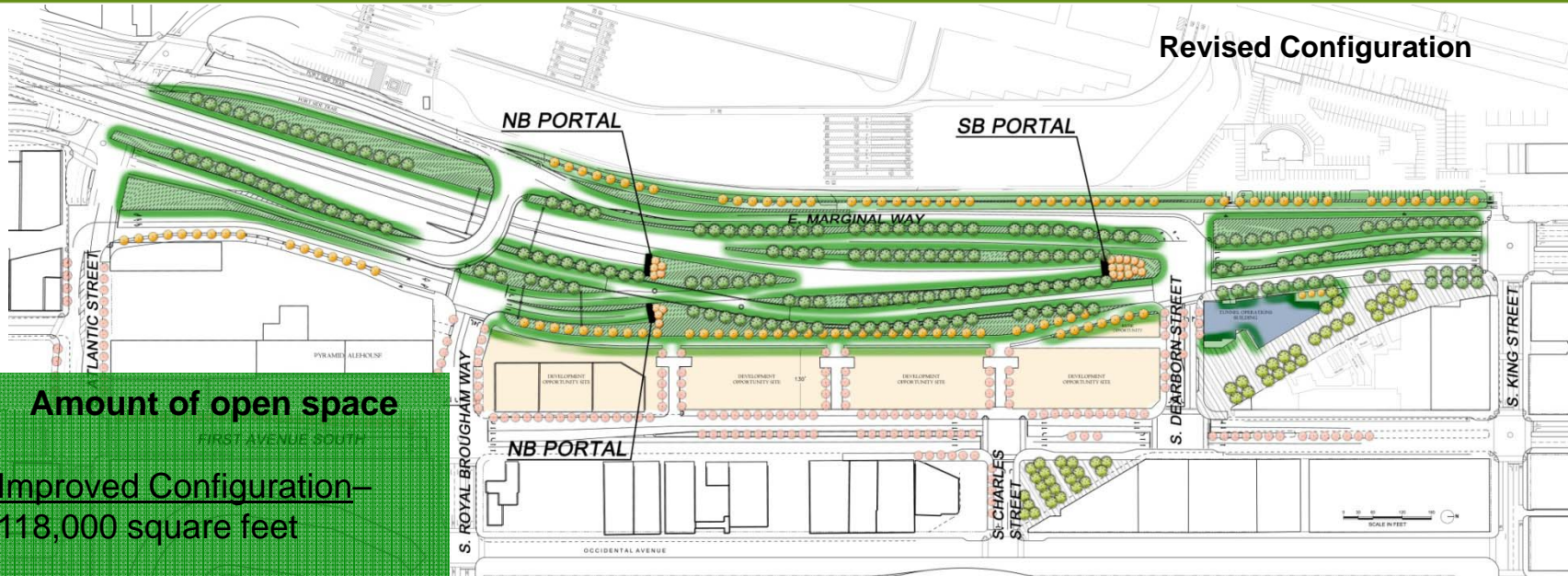
Amount of open space

Improved Configuration—
118,000 square feet

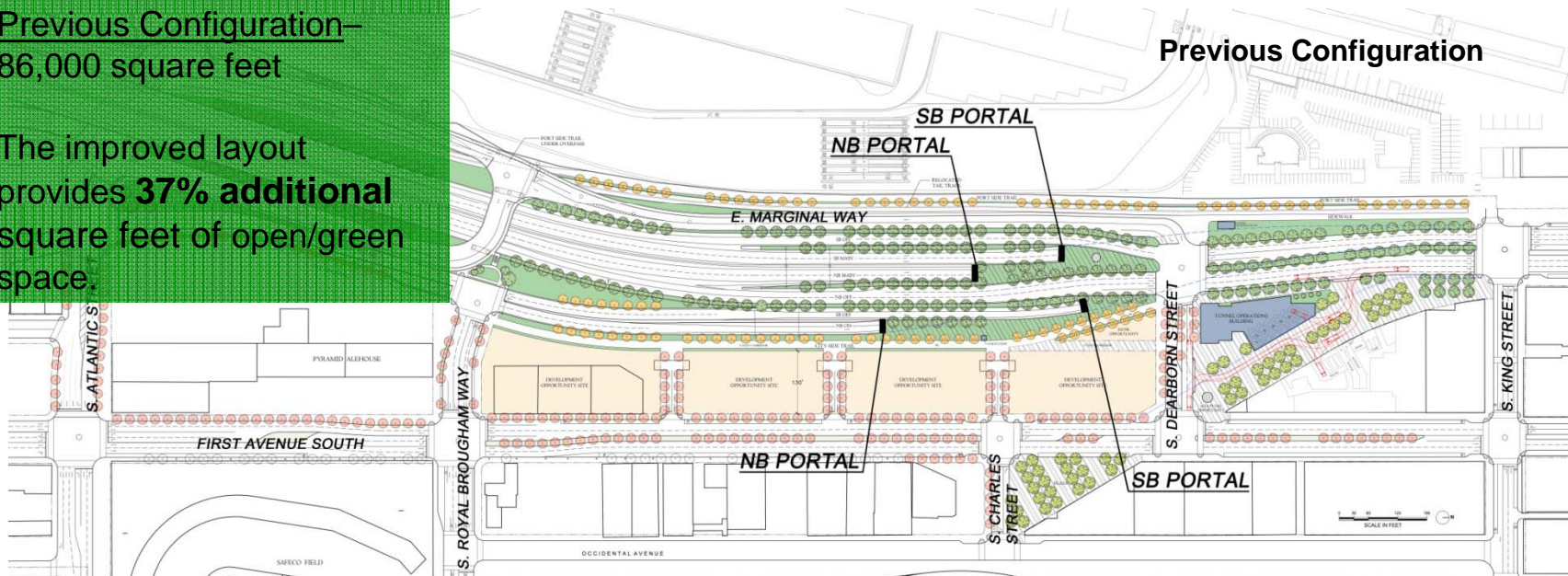
Previous Configuration—
86,000 square feet

The improved layout
provides **37% additional**
square feet of open/green
space.

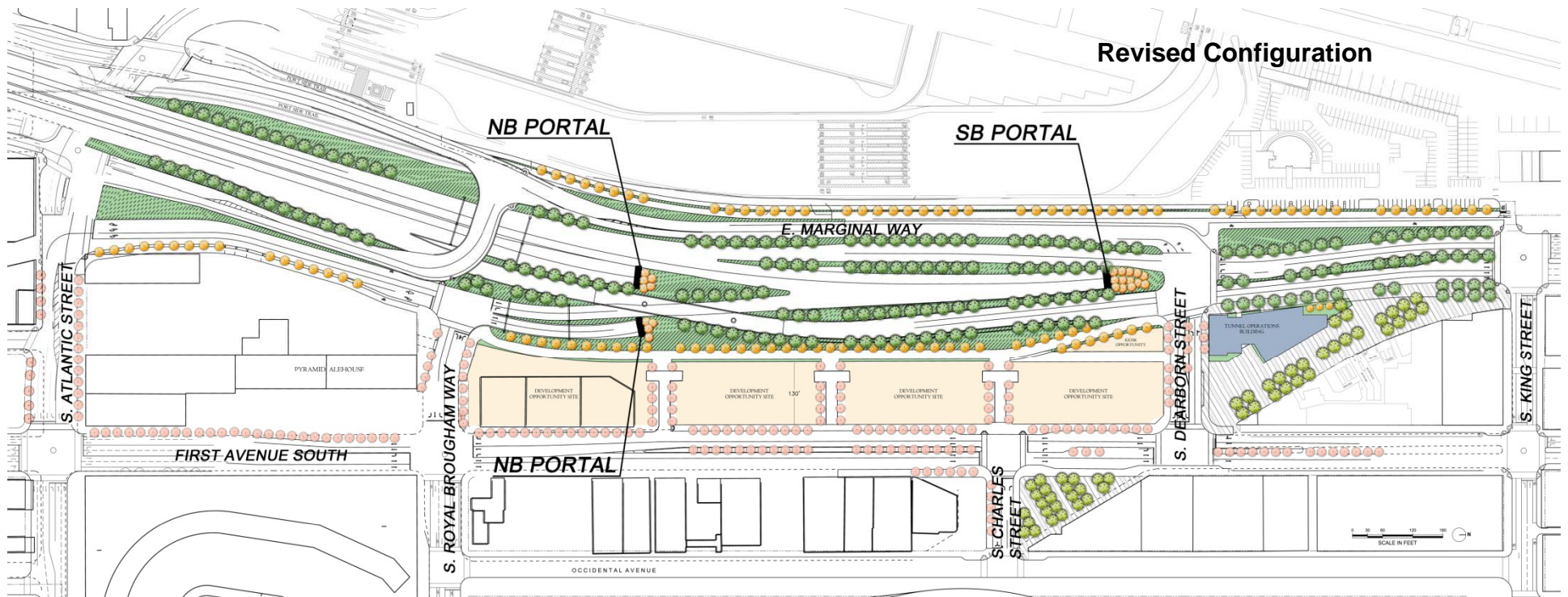
Revised Configuration



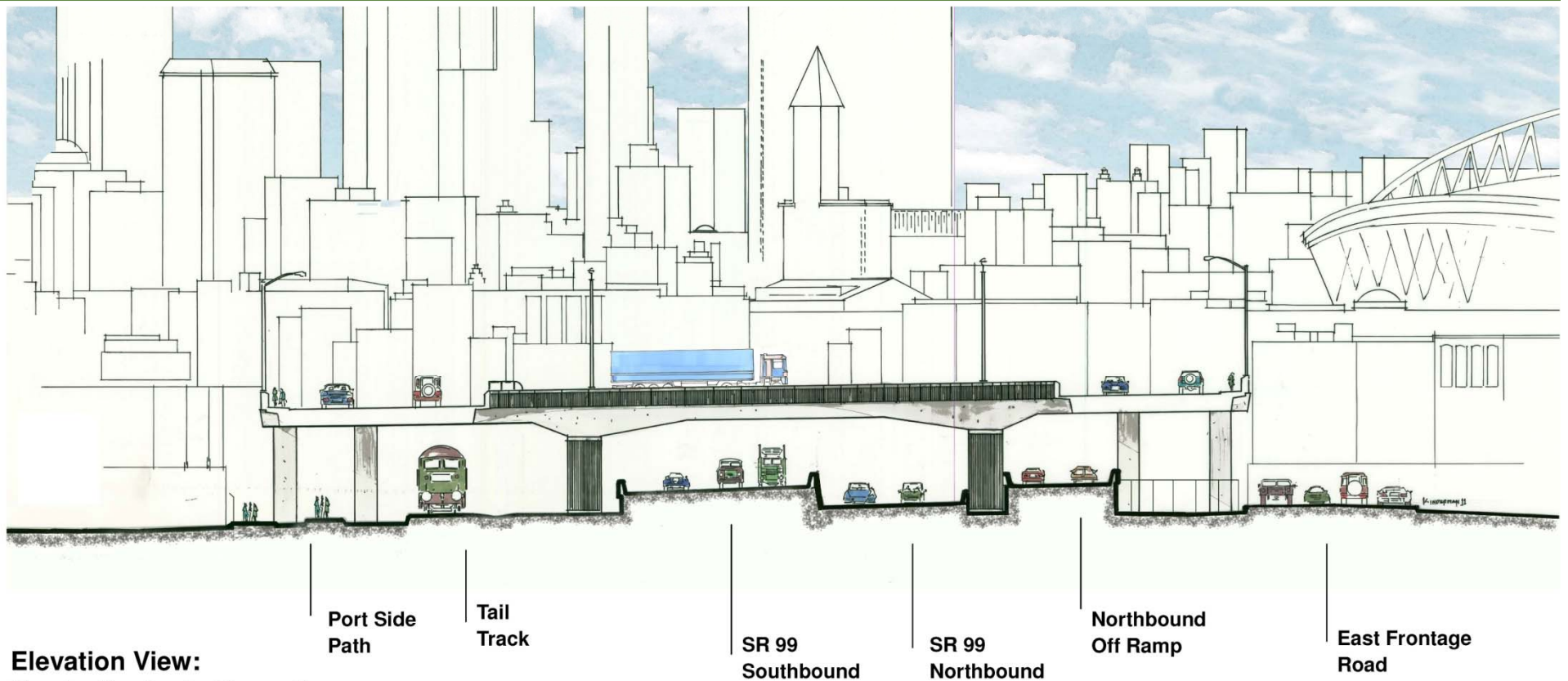
Previous Configuration



Alaskan Way Viaduct & Seawall Replacement Program



Overhead Bypass Bridge



Elevation View:
Showing the view looking north
from SR 99

Alaskan Way Viaduct & Seawall Replacement Program

Driver Perspectives



Alaskan Way Viaduct & Seawall Replacement Program

Driver Perspectives



Alaskan Way Viaduct & Seawall Replacement Program

Driver Perspectives



Alaskan Way Viaduct & Seawall Replacement Program

Driver Perspectives



Alaskan Way Viaduct & Seawall Replacement Program

Pedestrian Perspectives



#1

Alaskan Way Viaduct & Seawall Replacement Program

Pedestrian Perspectives



#2

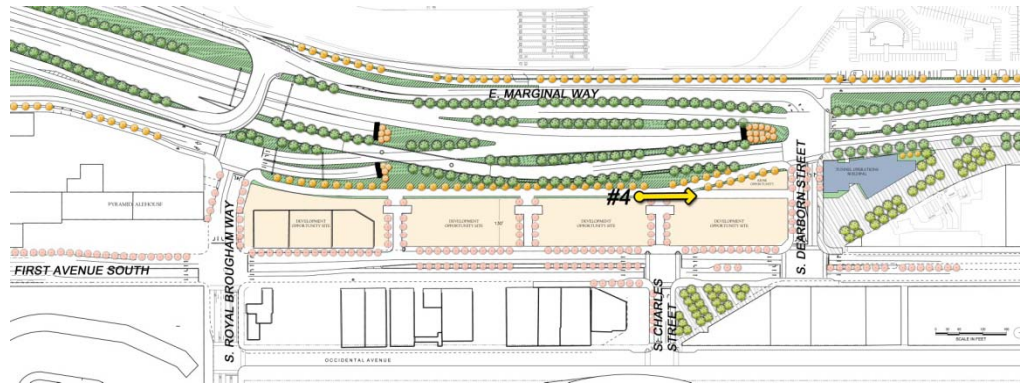
Alaskan Way Viaduct & Seawall Replacement Program

Pedestrian Perspectives



Alaskan Way Viaduct & Seawall Replacement Program

Pedestrian Perspectives



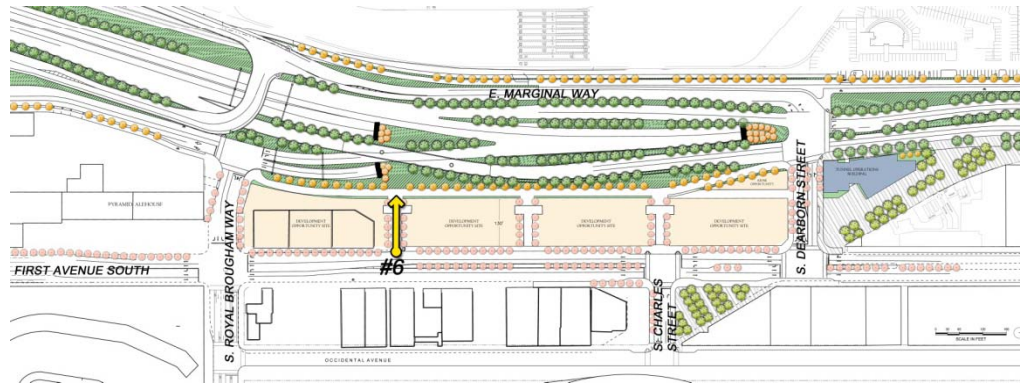
Alaskan Way Viaduct & Seawall Replacement Program

Pedestrian Perspectives



Alaskan Way Viaduct & Seawall Replacement Program

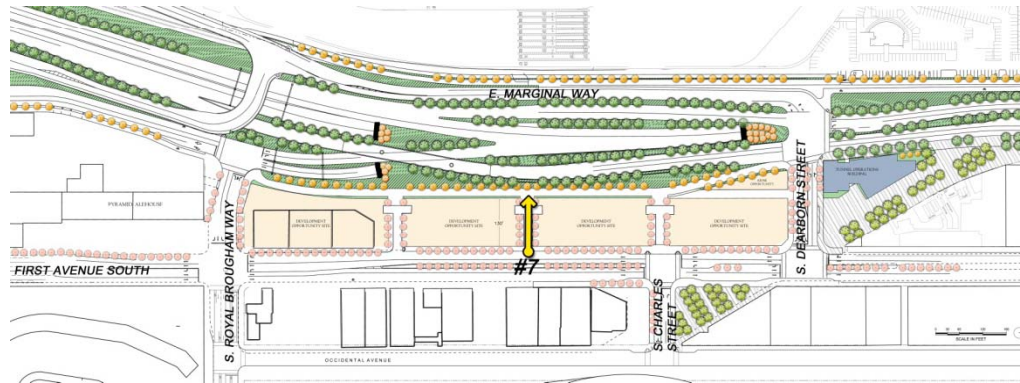
Pedestrian Perspectives



#6

Alaskan Way Viaduct & Seawall Replacement Program

Pedestrian Perspectives



#7

Alaskan Way Viaduct & Seawall Replacement Program

Pedestrian Perspectives

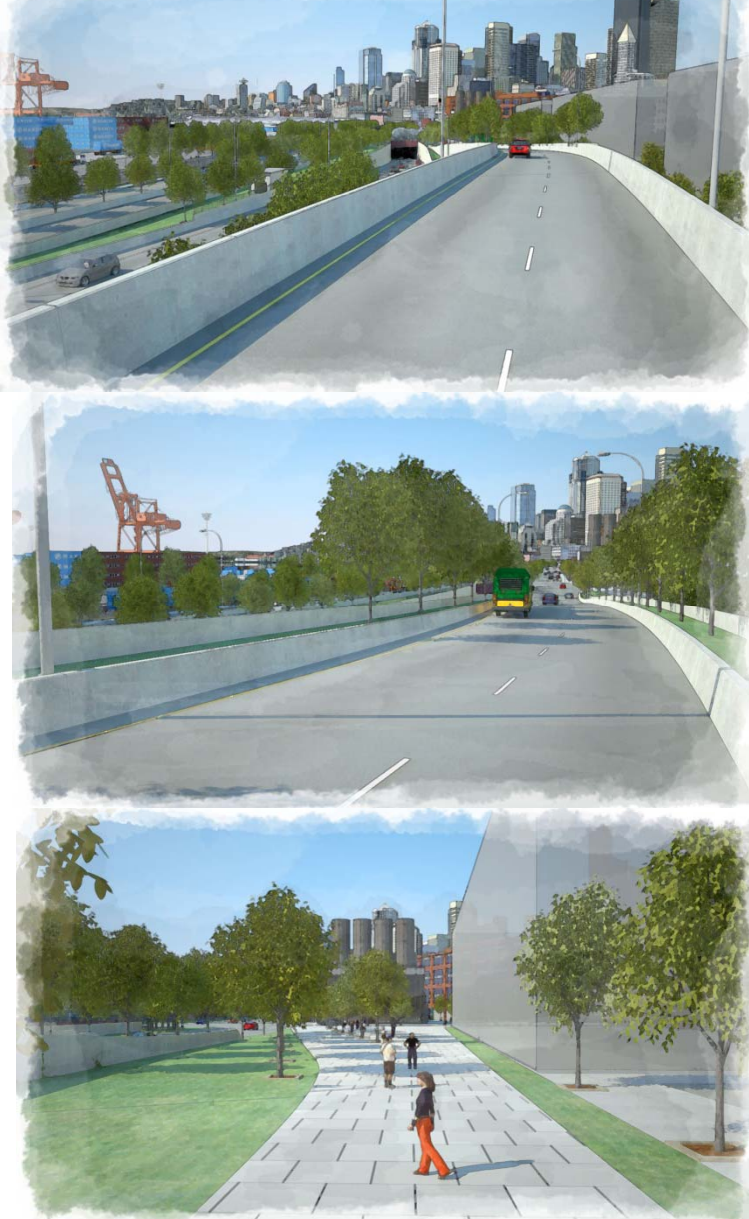


#8

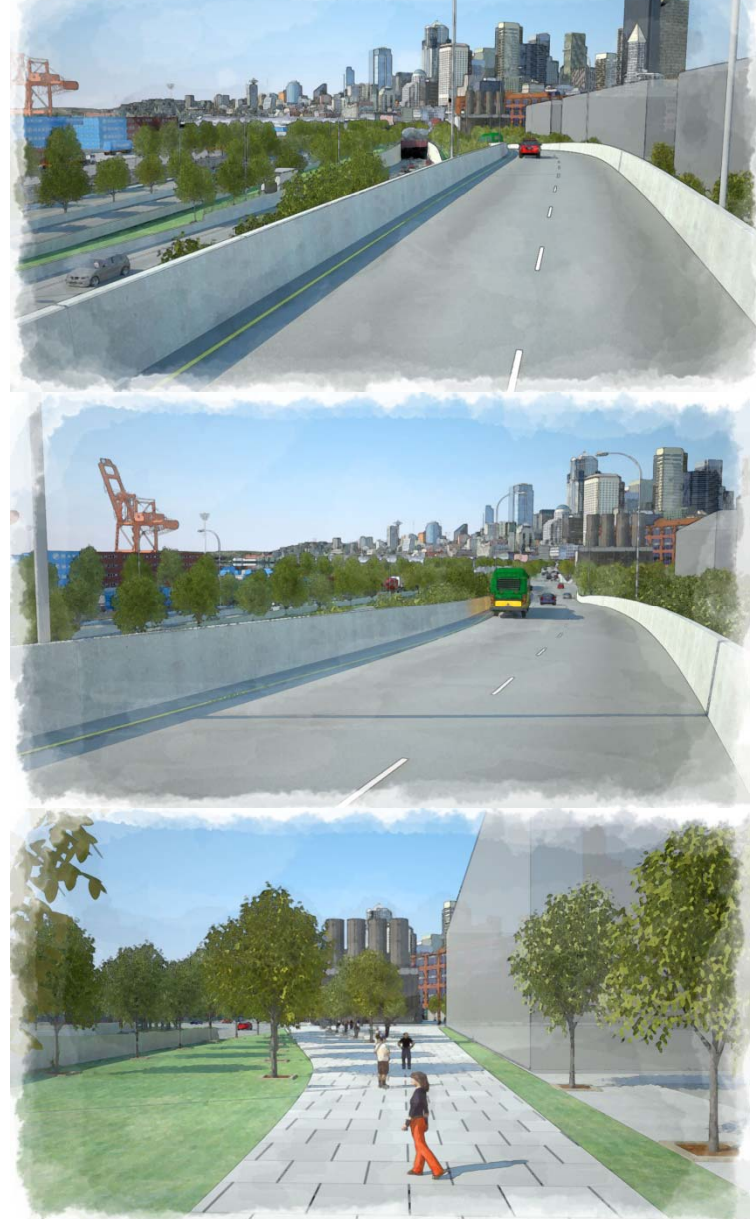
Alaskan Way Viaduct & Seawall Replacement Program

Options for consideration

Option 1 – Raised planters on the NB off ramp



Option 2 – No raised planters on the NB off ramp



Alaskan Way Viaduct & Seawall Replacement Program



Alaskan Way Viaduct & Seawall Replacement Program

March



Today's meeting –
**South Access Area
Urban Design**

April



- Updates to Urban Design Guidelines in response to March 17th meeting comments, and presentation on **South Operations Building**
- WSDOT/SDOT presentation on **Railroad Way S. and First Avenue S.**

May



- **North Operations Building and North Area Urban Design**
- WSDOT presentation on **North Access City Streets**

June



**Final presentation of
Bored Tunnel Project
Urban Design
Guidelines**

Alaskan Way Viaduct and Seawall Replacement Program



Web:

www.alaskanwayviaduct.org

E-mail:

viaduct@wsdot.wa.gov

Hotline:

1-888-AWV-LINE