

Times Square Building

Monorail guideway

McGraw Square and Westlake Avenue -

Exhibit A: Existing Conditions

Westin

10'

50'



5th Ave

bus zone

Stewart St

McGraw Square Park

paid parking (off peak only)

strain pole

signal control box

streetlight (old)

pedestrian
signal

charter bus zone

Westlake Ave

19'

12'

8'

Olive Way

raised planter
box

streetcar platform

streetlight (new)

tree pit

11'

10'

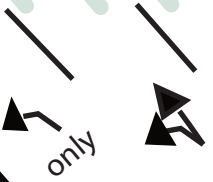
10'

11'

Only
Bus

MDB

Bank of America



Times Square Building

"McGraw Streetcar Plaza at Westlake / Times Square"

Exhibit B: Proposed Conditions

Westin

0' 10' 50'

N

Westlake Ave

Olive Way

5th Ave

Stewart St

ONLY

4

2

3

1

6

7

5

7

9

8

existing streetcar terminus

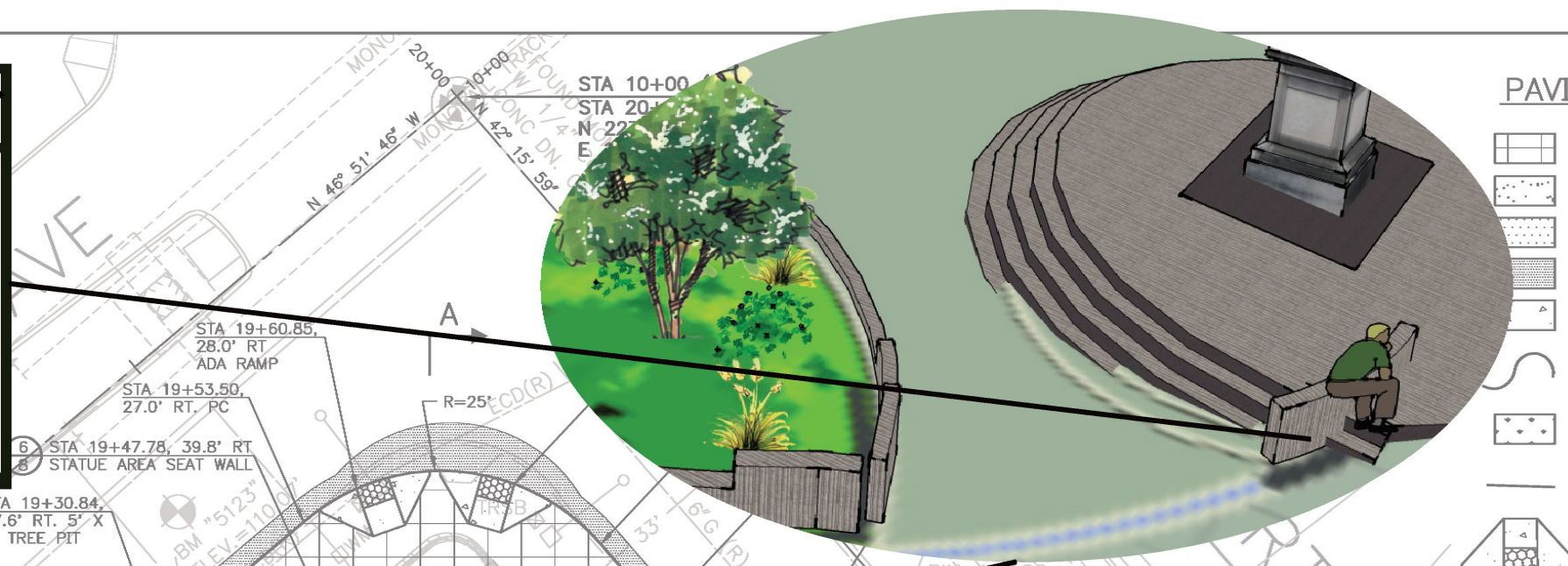
recently completed
sidewalk/ bus zone
improvements

MDB

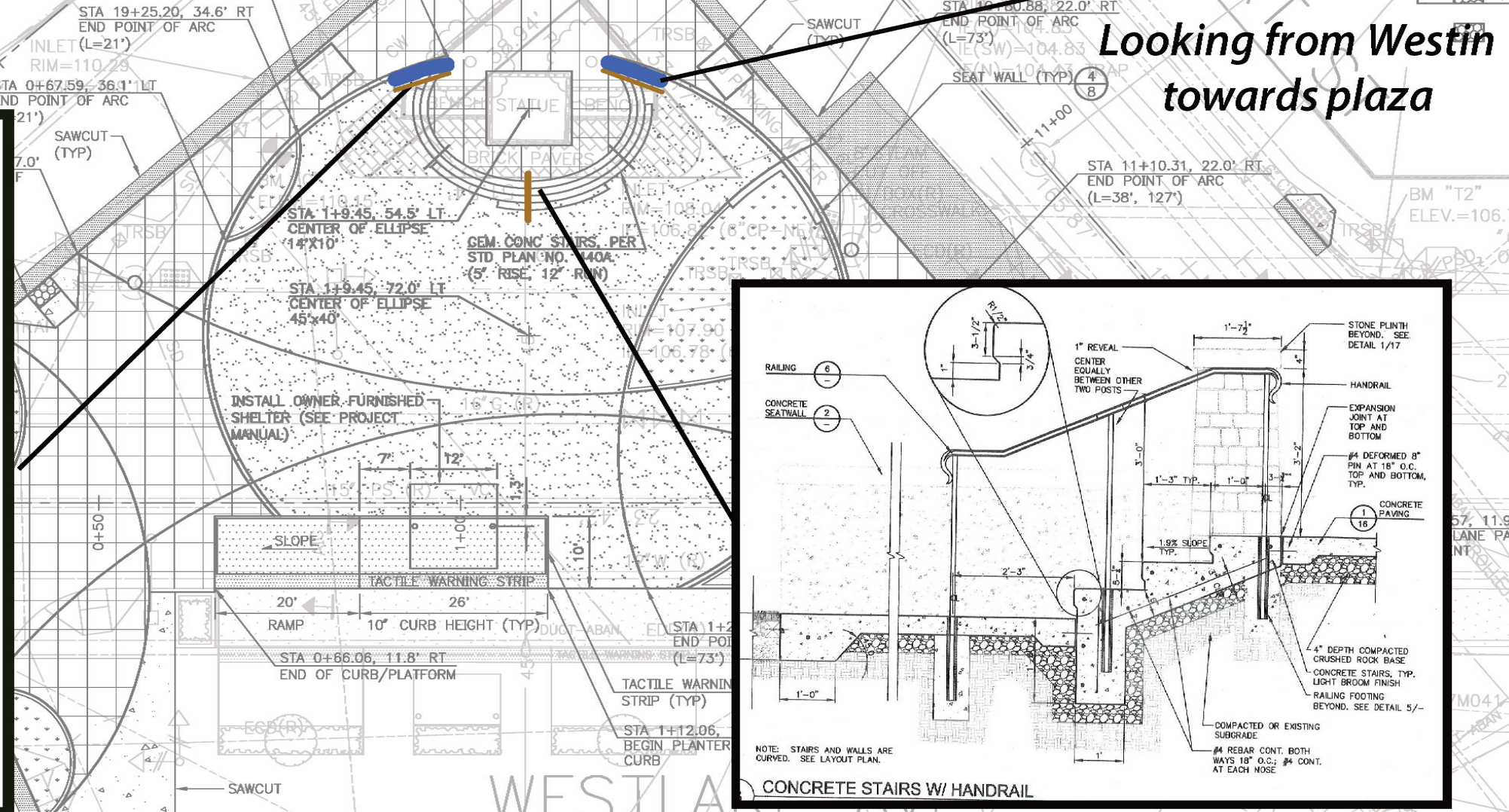
Bank of America

Key Elements

- 1 Plaza steps with railing
- 2 Illuminated seat wall with signage
- 3 Statue uplighting (surface inlay)
- 4 Landscape bed; future retail kiosk/vending location
- 5 Granite paver bands with surface-mounted LED light tiles
- 6 Lowered raingarden with native plantings/seat wall near statue
- 7 Landscape bed with granite detail
- 8 Landscape bed; future potential secure bicycle parking facility
- 9 New streetcar platform with covered bike parking/shelter

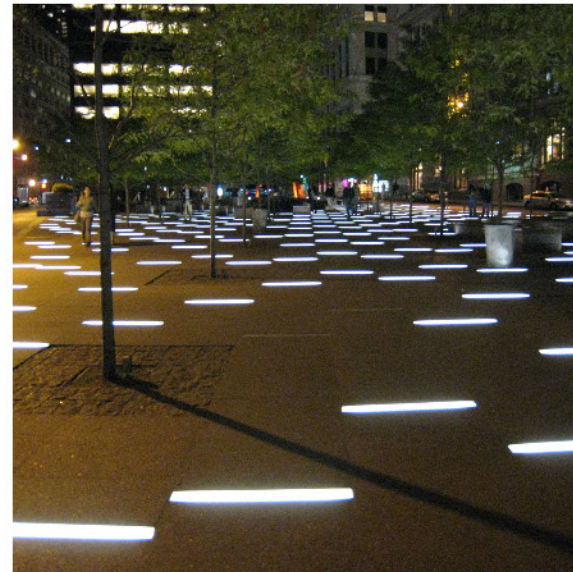
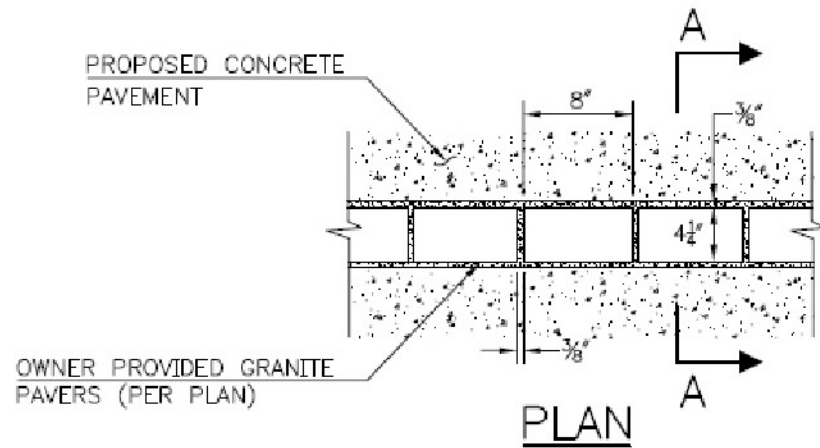


**Looking from Westin
towards plaza**



Railing Detail (from Cal Anderson Park)

circular "paver bands" with light tiles spaced every 4-5 feet

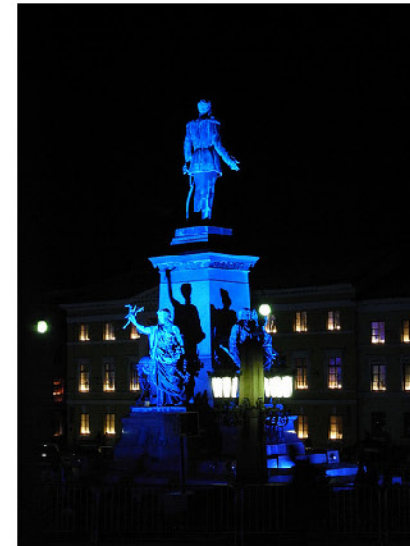


Salvaged 4x8" grey granite blocks



Matching 4x8" LED light tiles

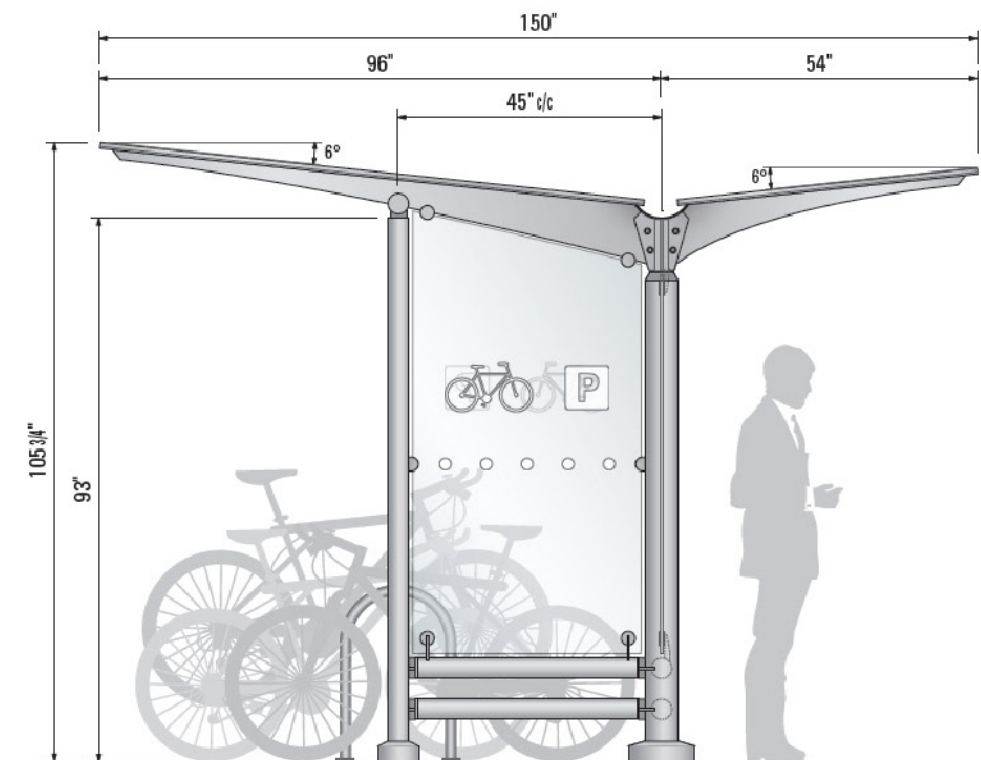
statue uplighting



Beta-Calco walkover uplighting luminaire (x2)



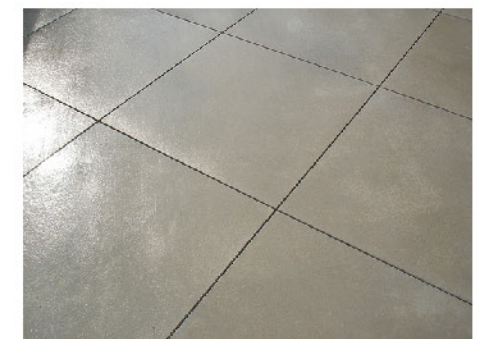
transit/bicycle parking shelter



concrete details



Dark colored concrete (1 1/2 lamp black)



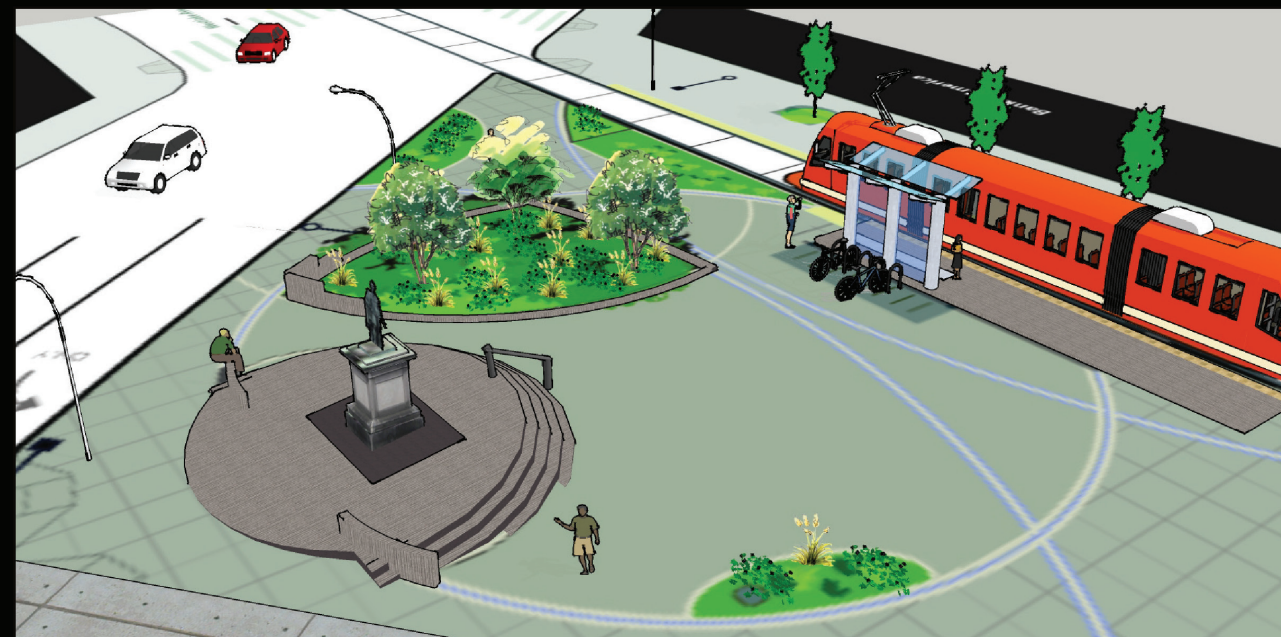
4x4' saw cut score pattern



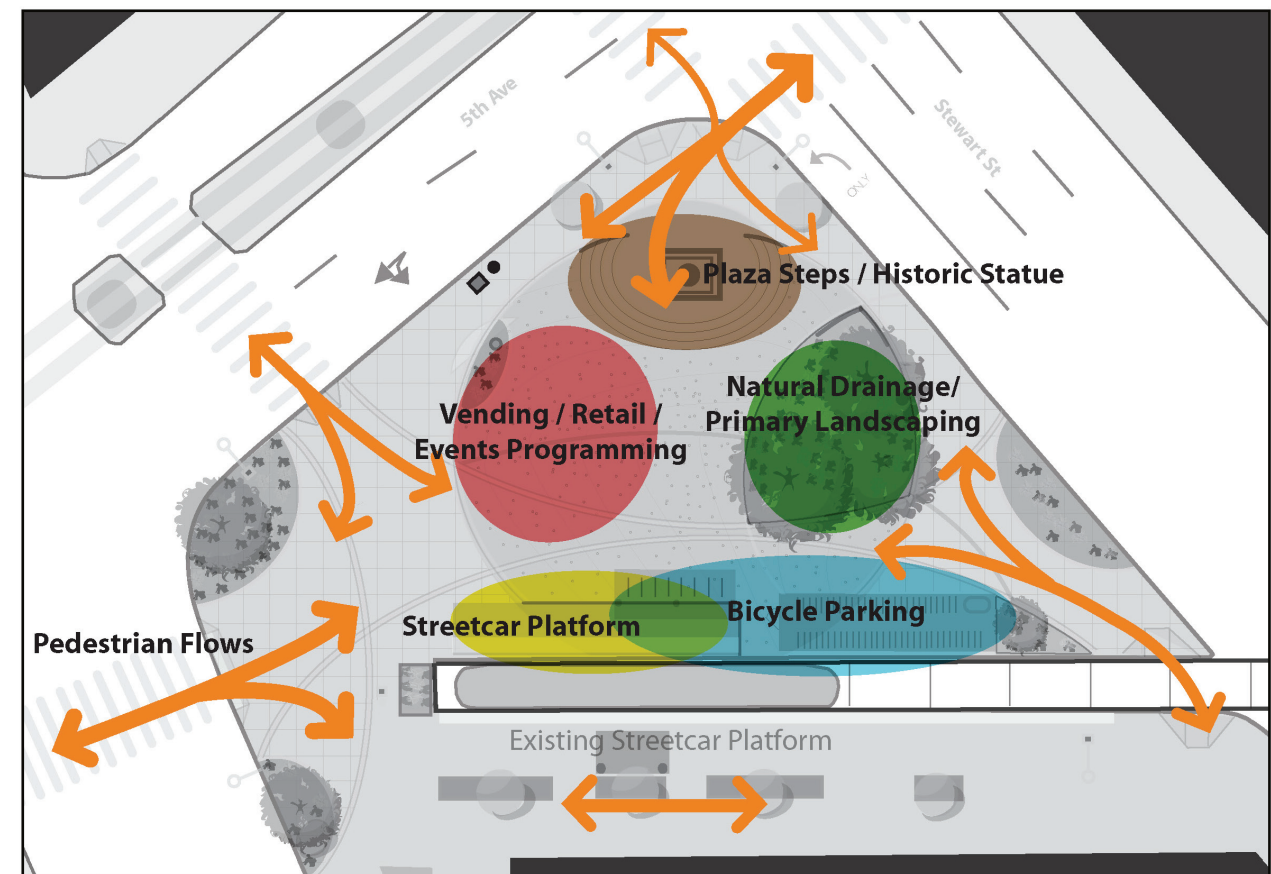
Looking northwest towards Westin Hotel



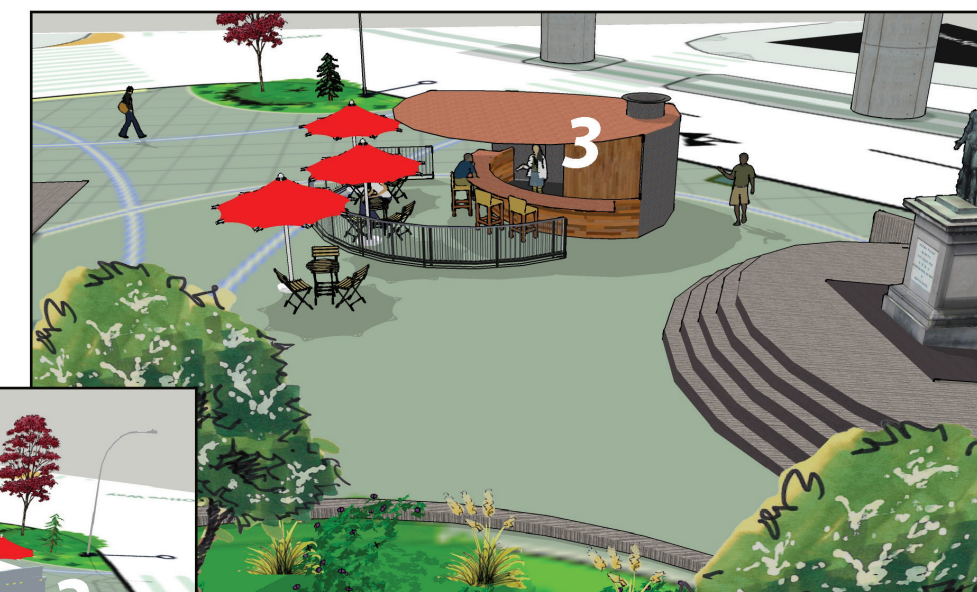
Street level looking southeast from Stewart St



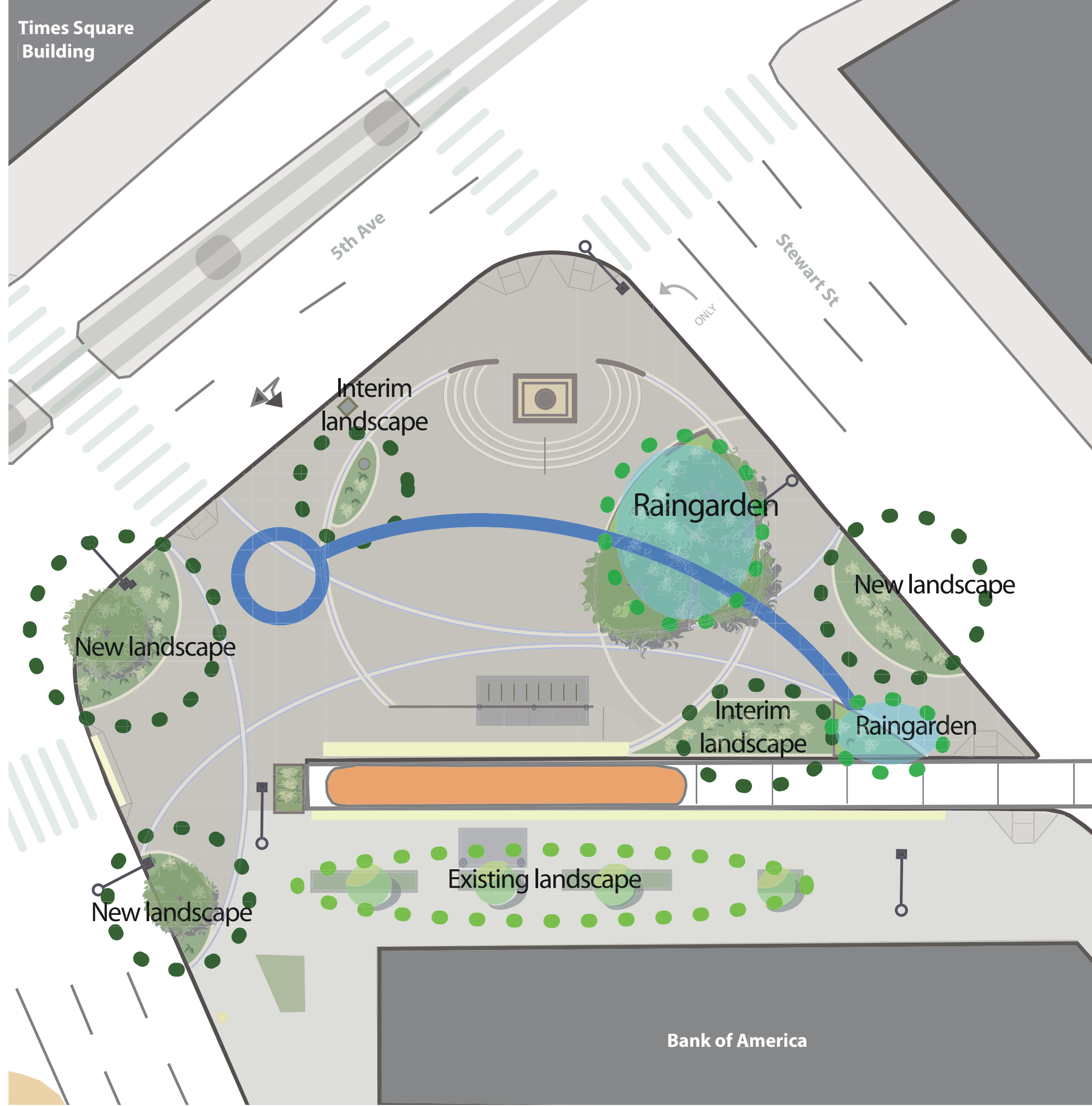
Looking down to plaza from Monorail/Times Square Building



Potential future plaza activities/changes include:



1. Secure bicycle parking facility
2. Mobile food vending in plaza; or
3. Commercial kiosk /cafe



“McGraw Streetcar Plaza at Westlake / Times Square”

Landscape & Water

- Native plants provide higher survivability
- Mix of evergreen and deciduous
- Provides year-round interest
- Store/infiltrate as much run-off as possible
- Use stormwater to irrigate the landscape

Dogwood or other native flowering



Vine Maple - Acer circinatum, adds fall color



Deer /Sword Fern - iconic northwest shade lover

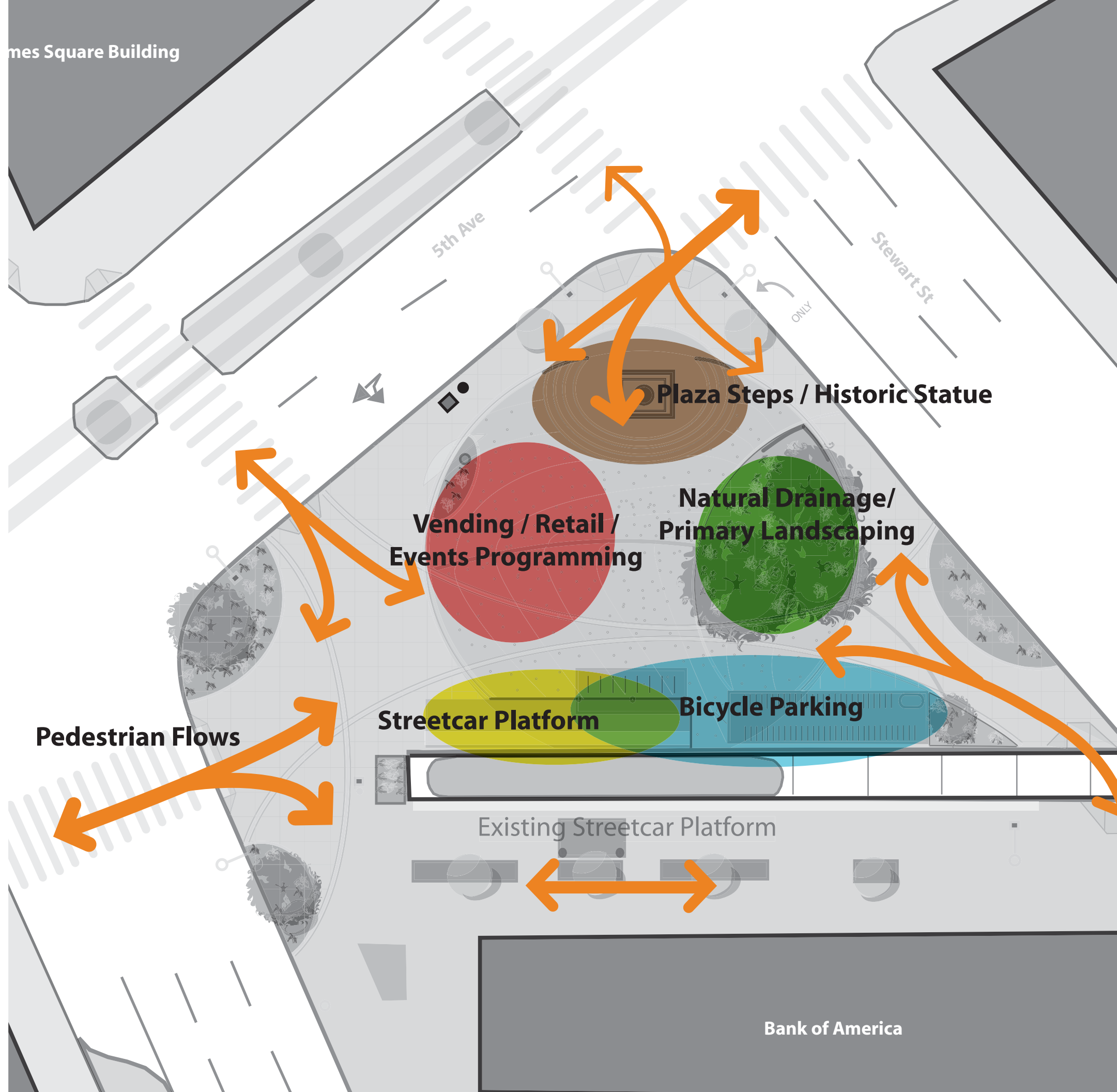


Grasses and other raingarden appropriate plantings



Oregon Grape - delicate leafed evergreen shrub





“McGraw Streetcar Plaza at Times Square”

Proposed Program

- Site anchored by historic statue, streetcar, and large raingarden
- Activation a high priority, including retail/ vending, transit amenities, and bicycle parking
- Flexible design that can easily absorb future facilities, complex pedestrian circulation

Plaza designed to accommodate future retail kiosk and stand-alone secure bicycle storage facility



As proposed, plaza allows space for mobile food vending and/or events programming (e.g. holiday gatherings, food markets)