An aerial photograph of Seattle, Washington, showing the city's skyline and waterfront. A red dashed line with circular endpoints at each end indicates the proposed route of a tunnel. The line starts in the northern part of the city, near the waterfront, and extends southwards, following the coastline and then curving inland towards the downtown area. The endpoints are marked with solid red circles.

**Presentation to the
Seattle Design Commission
March 18, 2010**

North and South Portal Areas and the
Tunnel Operations Buildings

Prepared by ROMA Design Group and NBBJ

Agenda

January 21st

Bored Tunnel Realignment

Update of South & North Portal Alternatives

Goals & Objectives

February 18th

Response to Comments

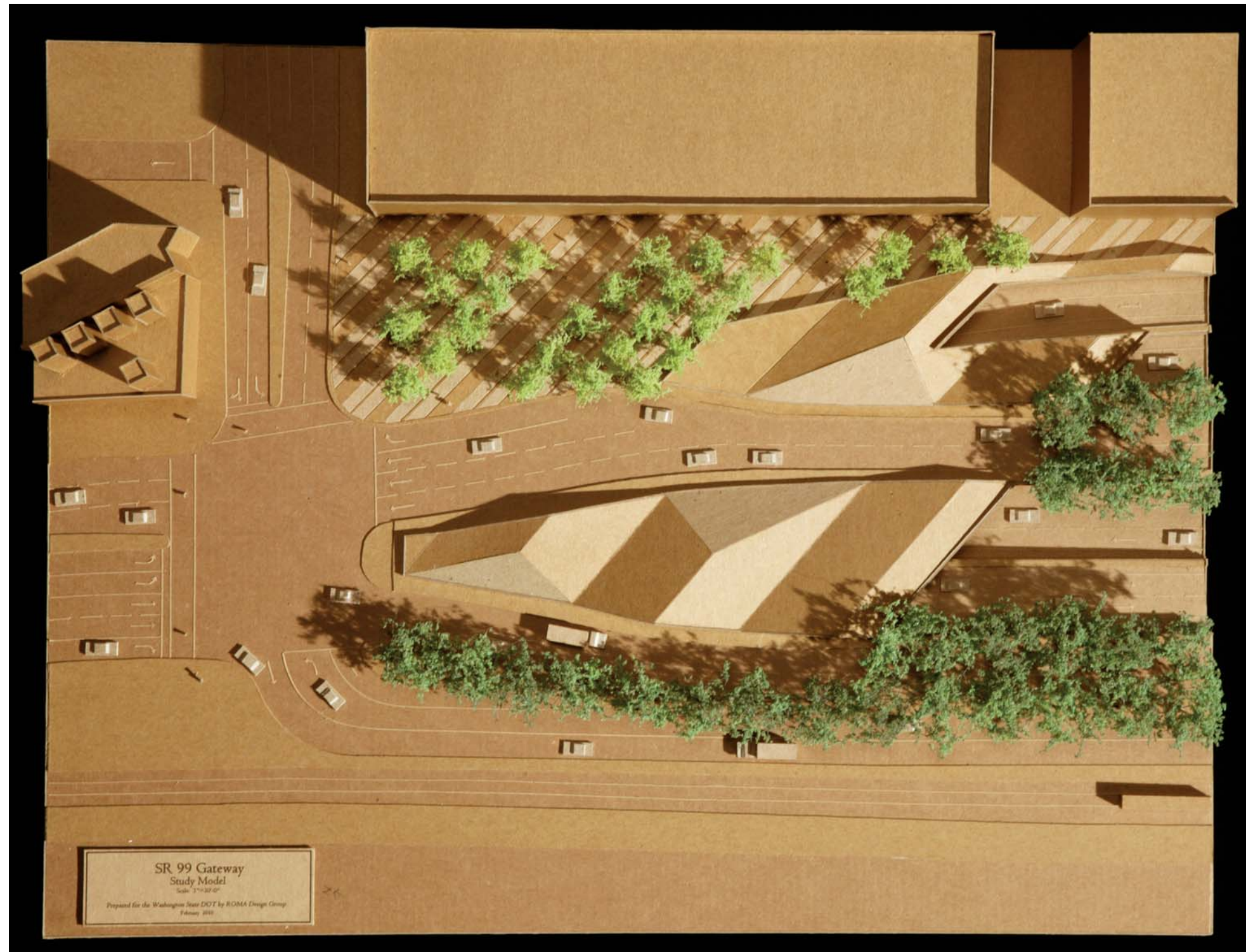
Focus on Tunnel Operations Building

March 18th

- South Portal Concepts
- Railroad Way South Concepts
- South Tunnel Operations Building
- North Tunnel Operations Building
- North Portal Concepts

April 15th

Components & Treatments



SOUTH PORTAL: OPTION D-1A

Alaskan Way Viaduct Replacement Project

Prepared for Washington State Department of Transportation and City of Seattle by ROMA Design Group

MARCH 24, 2010

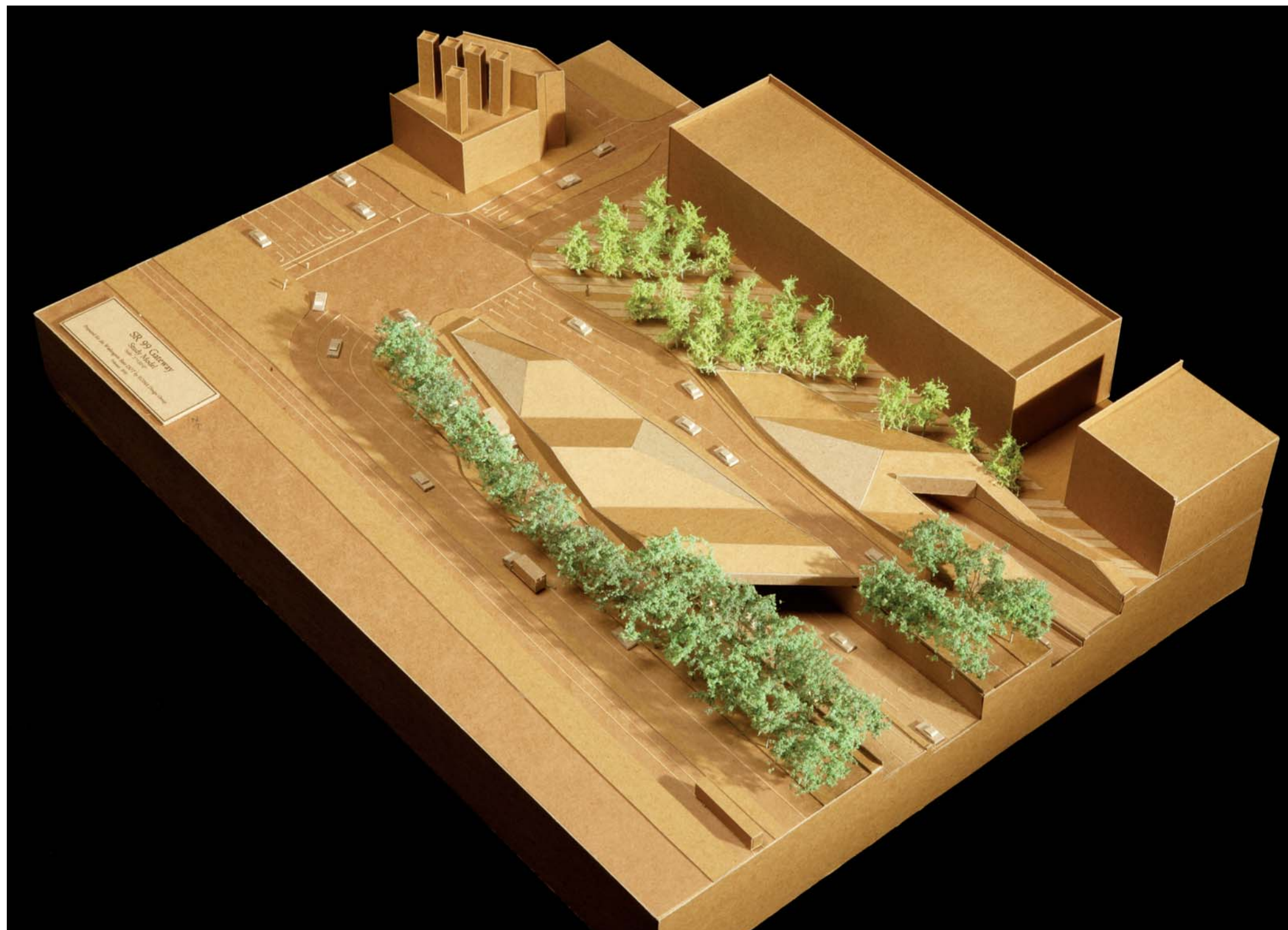


SOUTH PORTAL: VIEWS FROM NORTH AND SOUTH, RAILROAD WAY

Alaskan Way Viaduct Replacement Project

Prepared for Washington State Department of Transportation and City of Seattle by ROMA Design Group

MARCH 24, 2010

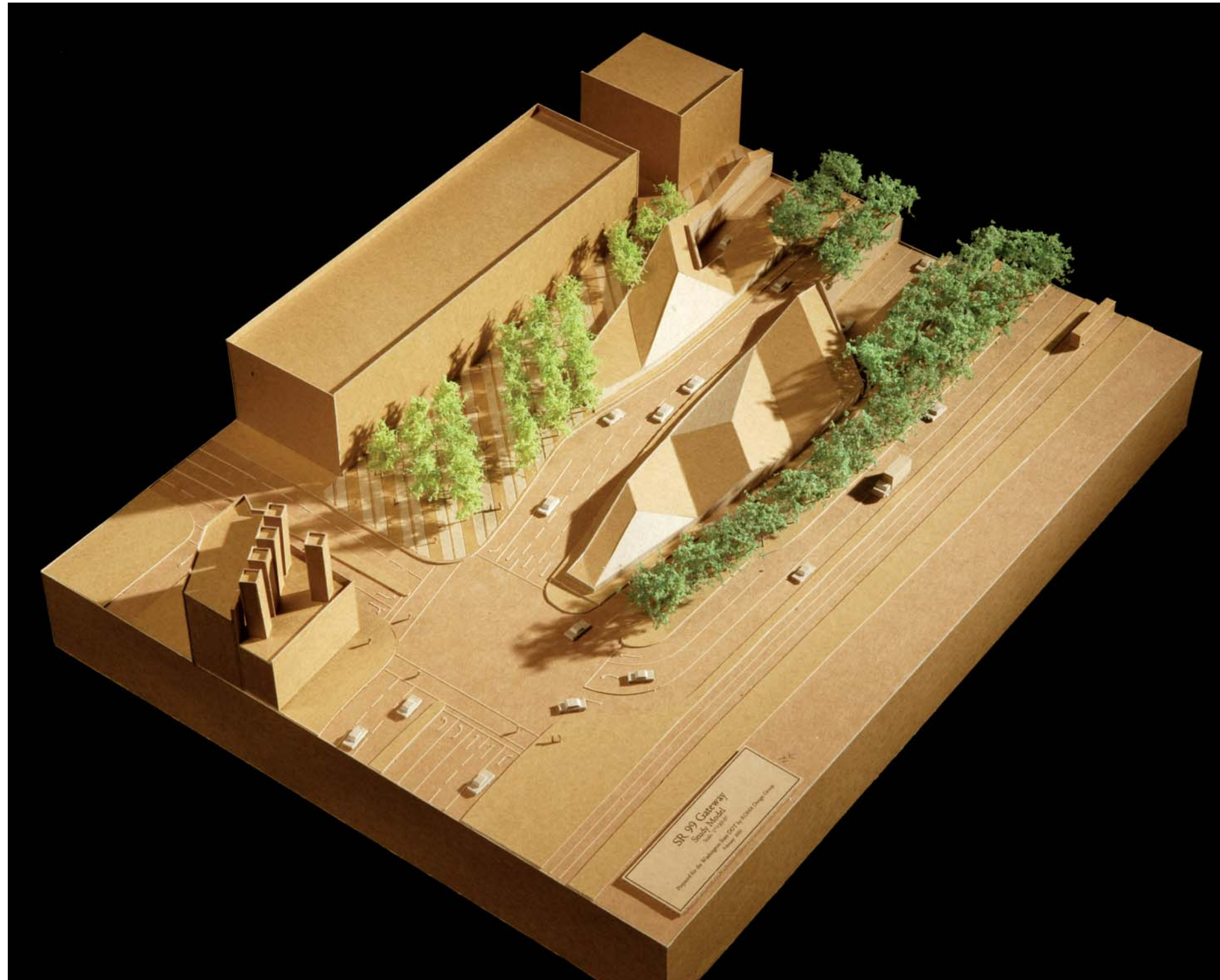


SOUTH PORTAL: VIEW FROM NORTHWEST, OPTION D-1A

Alaskan Way Viaduct Replacement Project

Prepared for Washington State Department of Transportation and City of Seattle by ROMA Design Group

MARCH 24, 2010

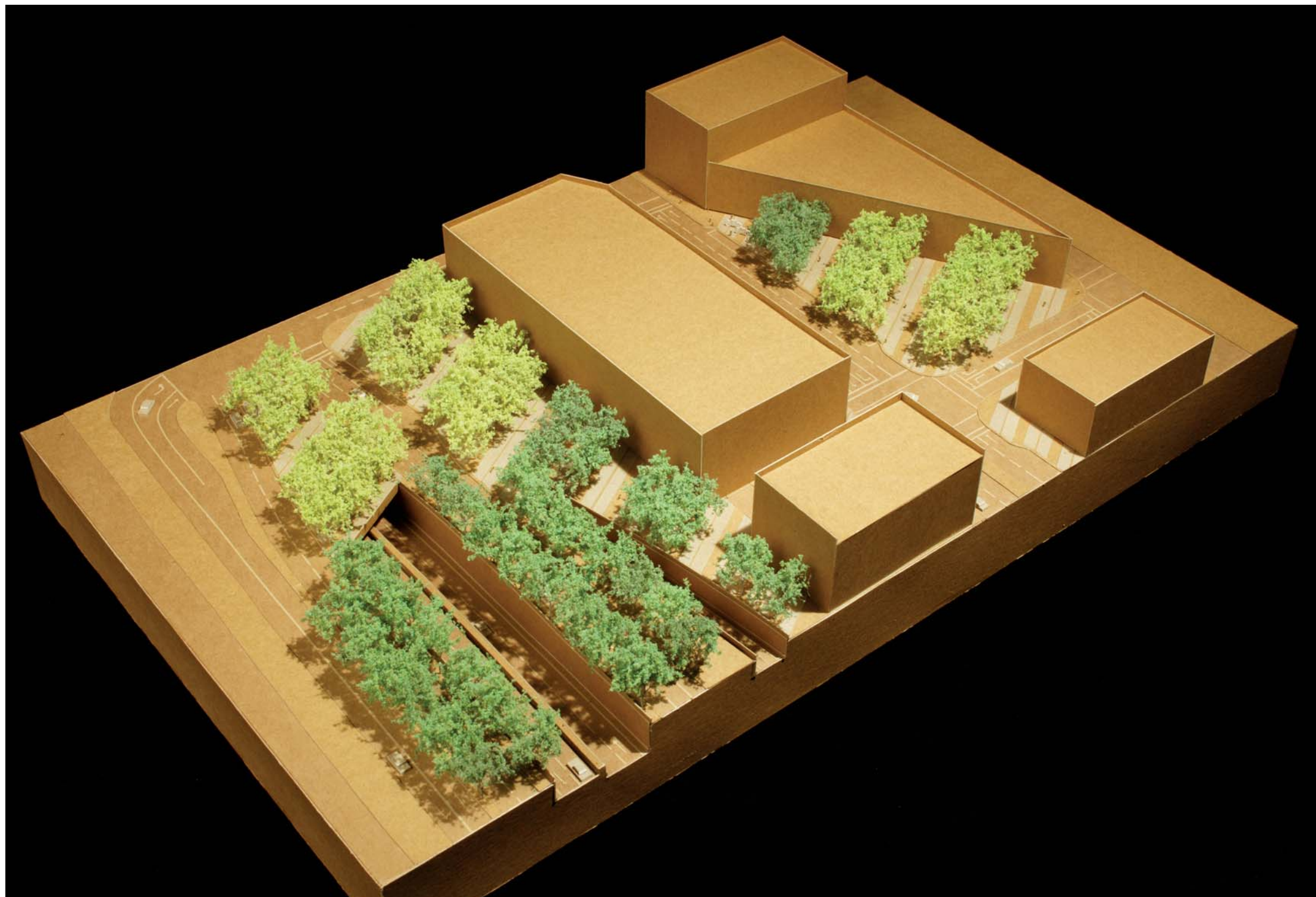


SOUTH PORTAL: VIEW FROM SOUTHWEST, OPTION D-1A

Alaskan Way Viaduct Replacement Project

Prepared for Washington State Department of Transportation and City of Seattle by ROMA Design Group

MARCH 24, 2010

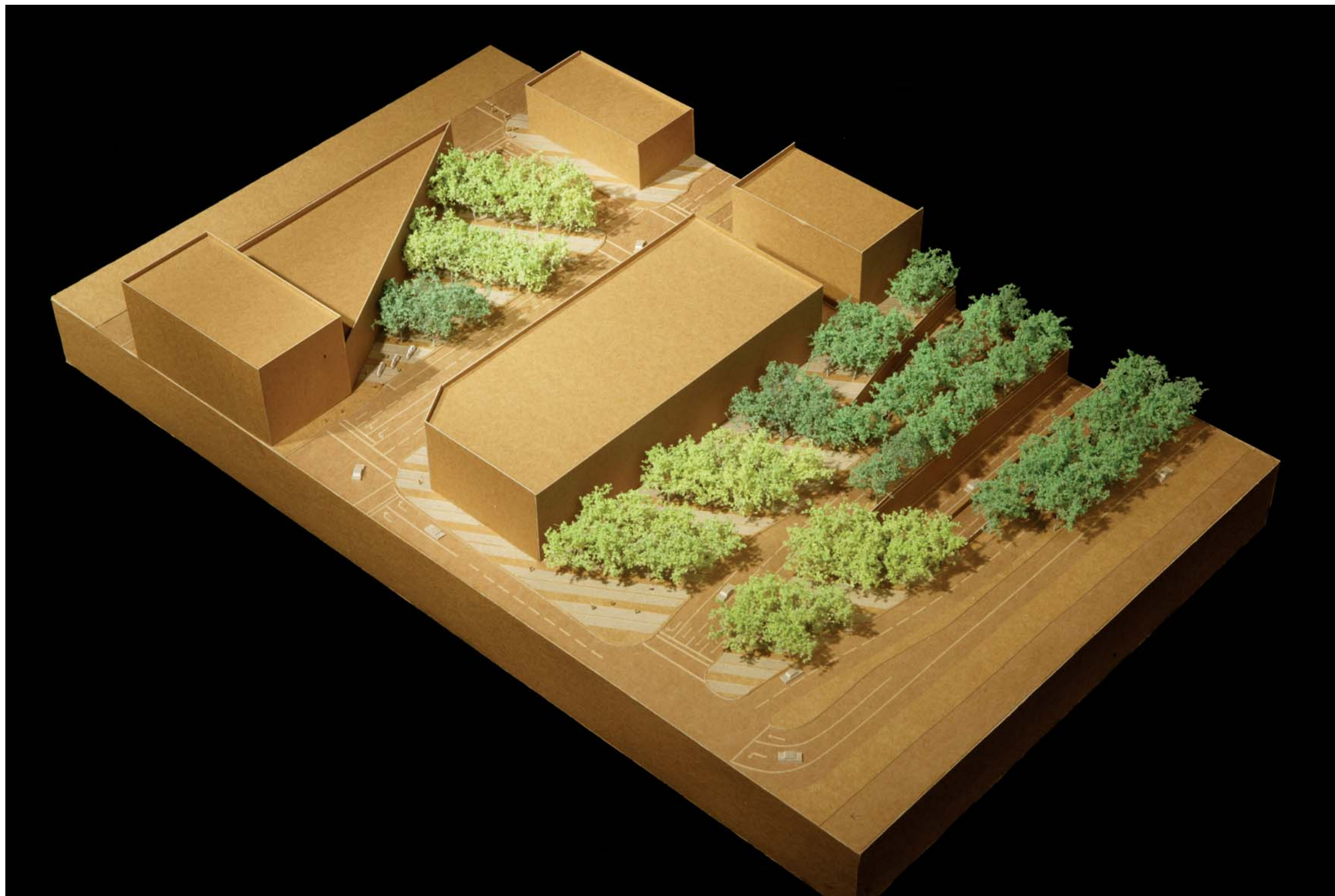


SOUTH PORTAL: VIEW FROM NORTHWEST, OPTION D-3

Alaskan Way Viaduct Replacement Project

Prepared for Washington State Department of Transportation and City of Seattle by ROMA Design Group

MARCH 24, 2010



SOUTH PORTAL: VIEW FROM SOUTHWEST, OPTION D-3

Alaskan Way Viaduct Replacement Project

Prepared for Washington State Department of Transportation and City of Seattle by ROMA Design Group

MARCH 24, 2010



SOUTH PORTAL: RAILROAD WAY

Alaskan Way Viaduct Replacement Project

Prepared for Washington State Department of Transportation and City of Seattle by ROMA Design Group

MARCH 24, 2010



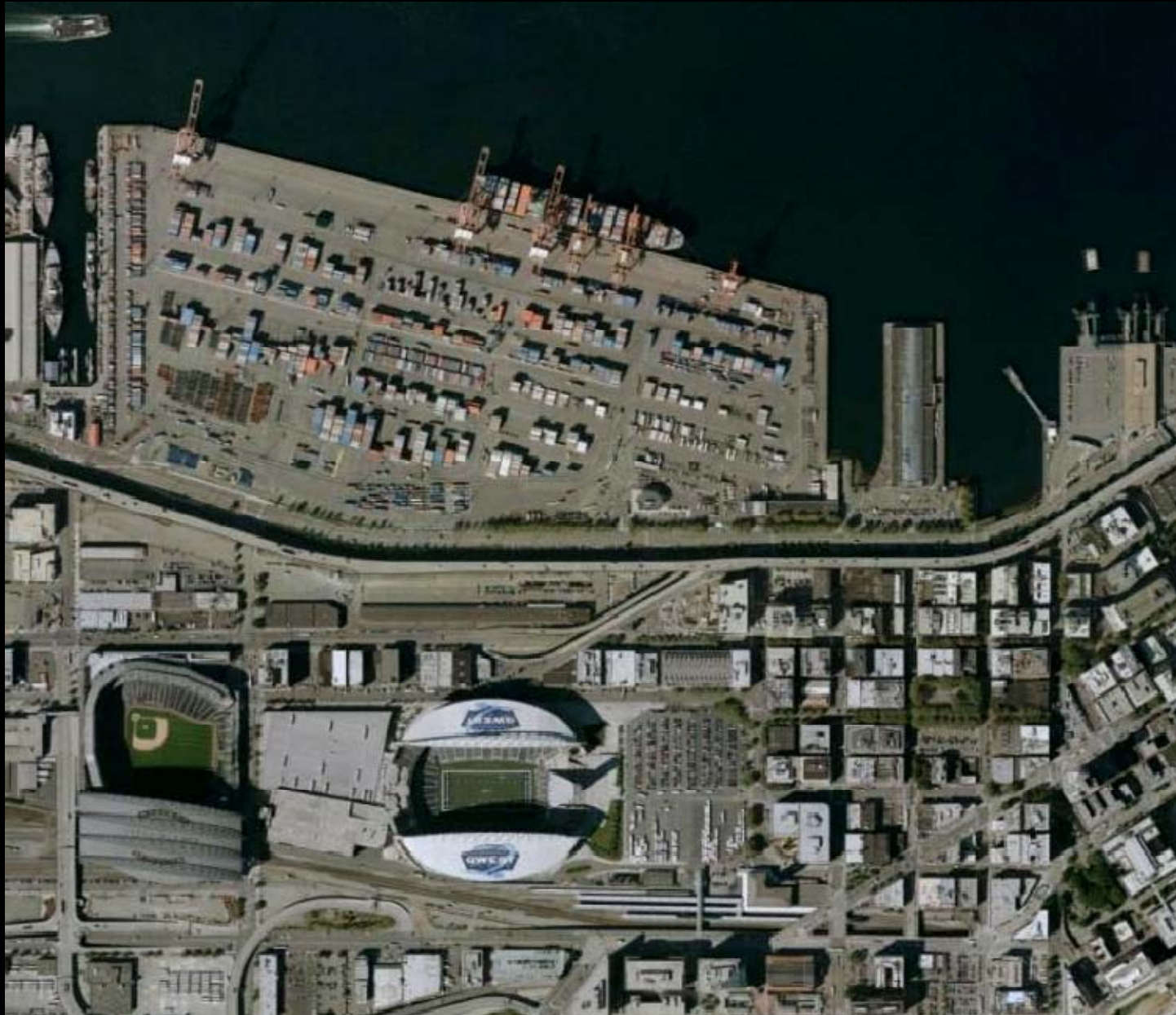
SOUTH PORTAL: VIEW FROM SOUTHWEST, RAILROAD WAY

Alaskan Way Viaduct Replacement Project

Prepared for Washington State Department of Transportation and City of Seattle by ROMA Design Group

MARCH 24, 2010

Existing South Portal Area



The Tunnel Operations Building Design Principles :

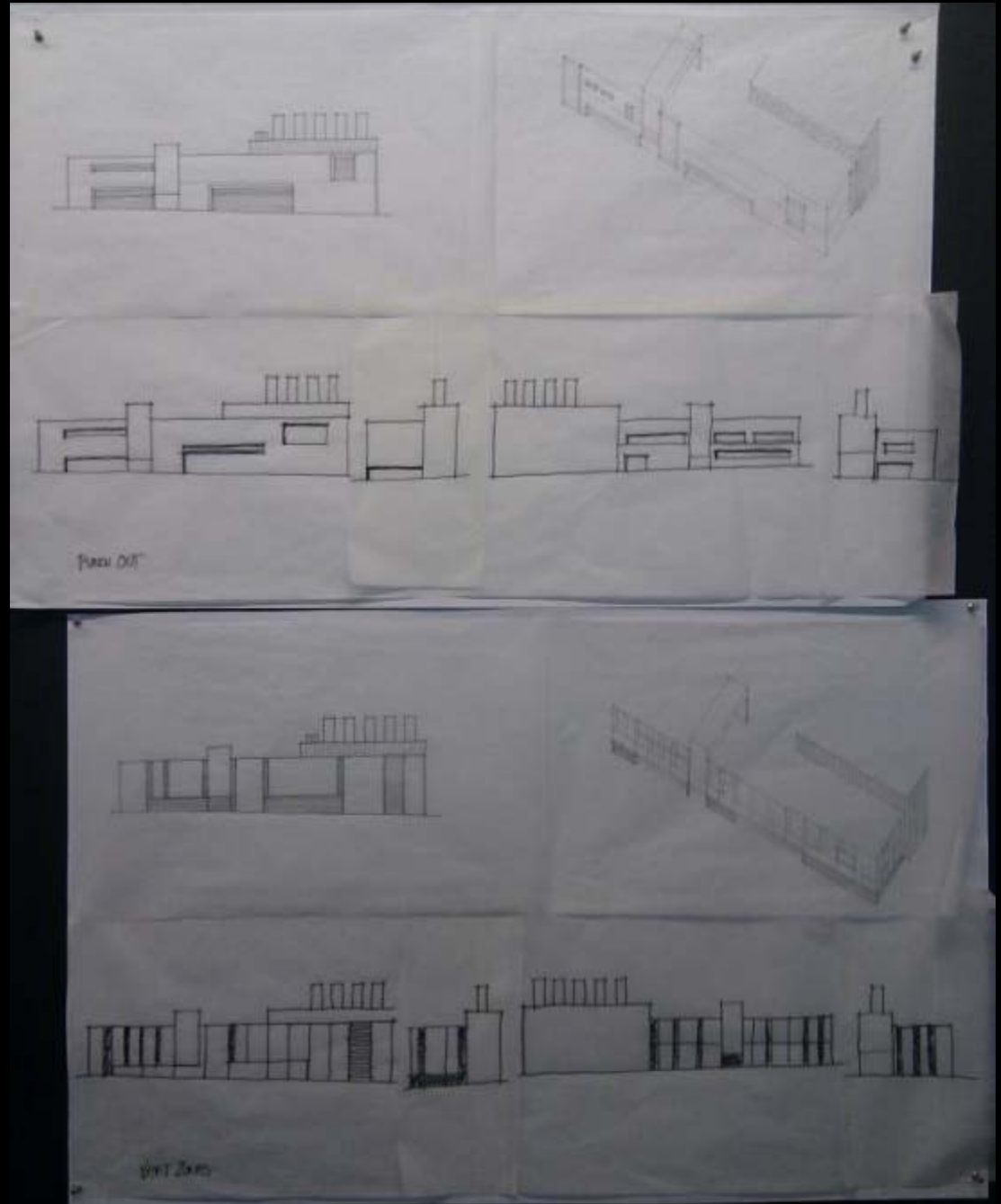
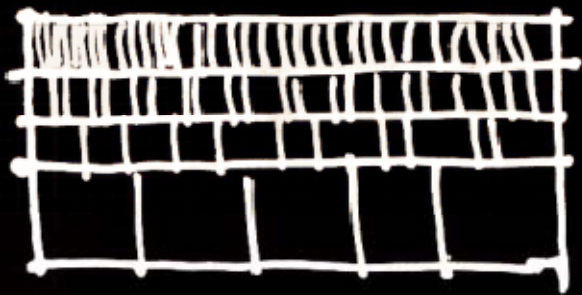
- express their purpose & reveal their primary functions
- be simple, durable & unapologetically industrial
- be massed & proportioned in relation to their context
- enhance their surroundings & reflect pedestrian scale
- relate as part of the same project, more alike than different
- be designed as part of the portal experience
- act as urban beacons to reinforce the sense of arrival
- incorporate/ express sustainable practices



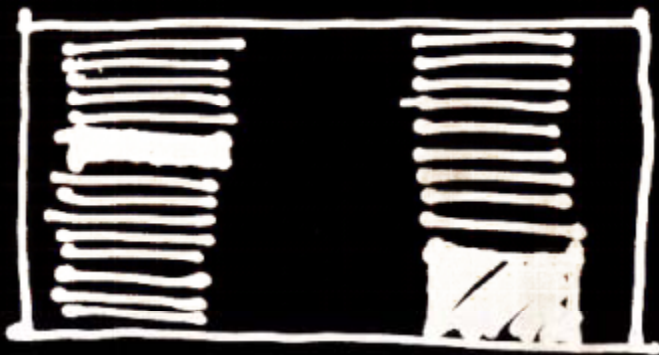
Building Design Principles



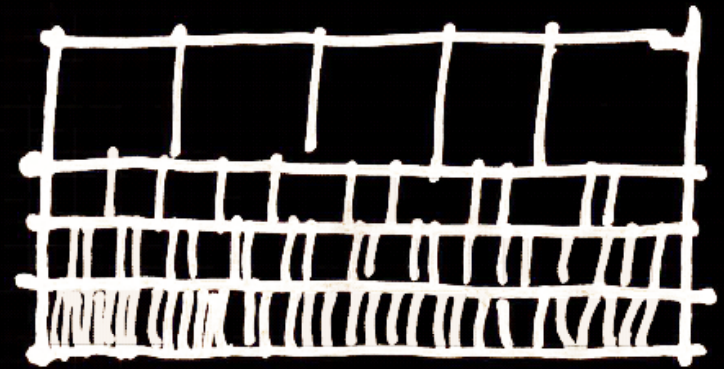
South Immediate Context



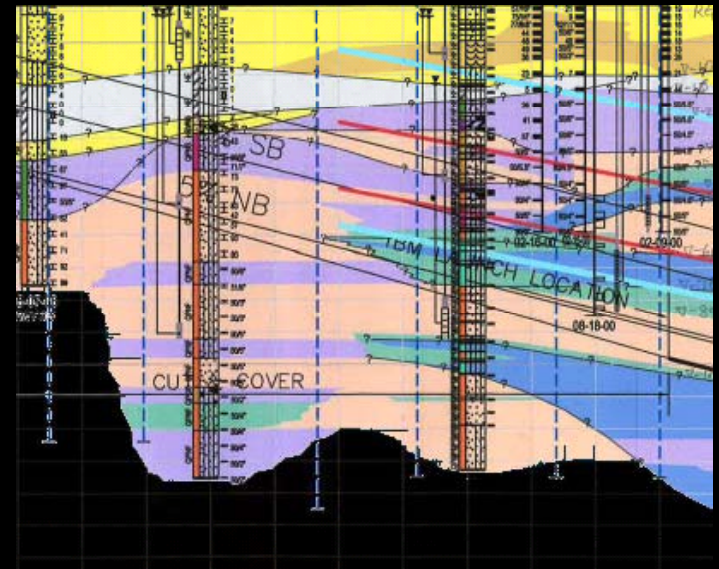
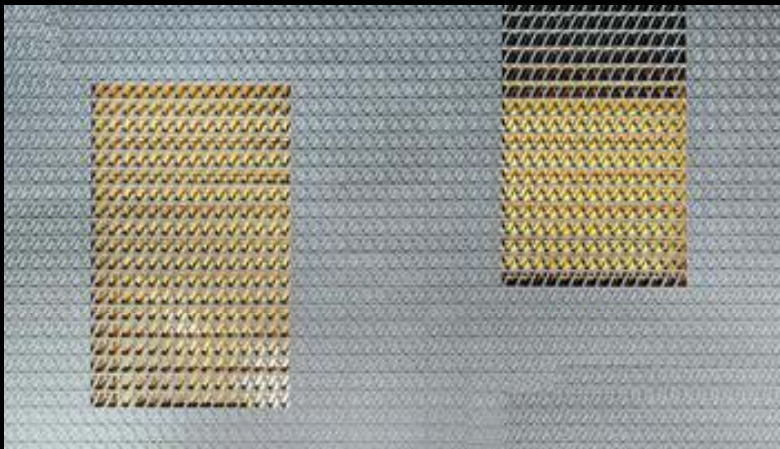
Design Evolution



CAMO



STRATA



Inspiration

Strata



Camo



South Tunnel Operations Building - view looking southeast

Strata



Camo



South Tunnel Operations Building - view looking northeast





North Immediate Context

Strata



Camo



North Tunnel Operations Building - view looking southeast

Challenges

Arrival Experience

Street Level Experience

Design Integration of Landscape & Built Environment



Issues

Roadways in Flux

Need to Buffer & Protect Pedestrians

Clearances at Openings (horizontal & vertical)

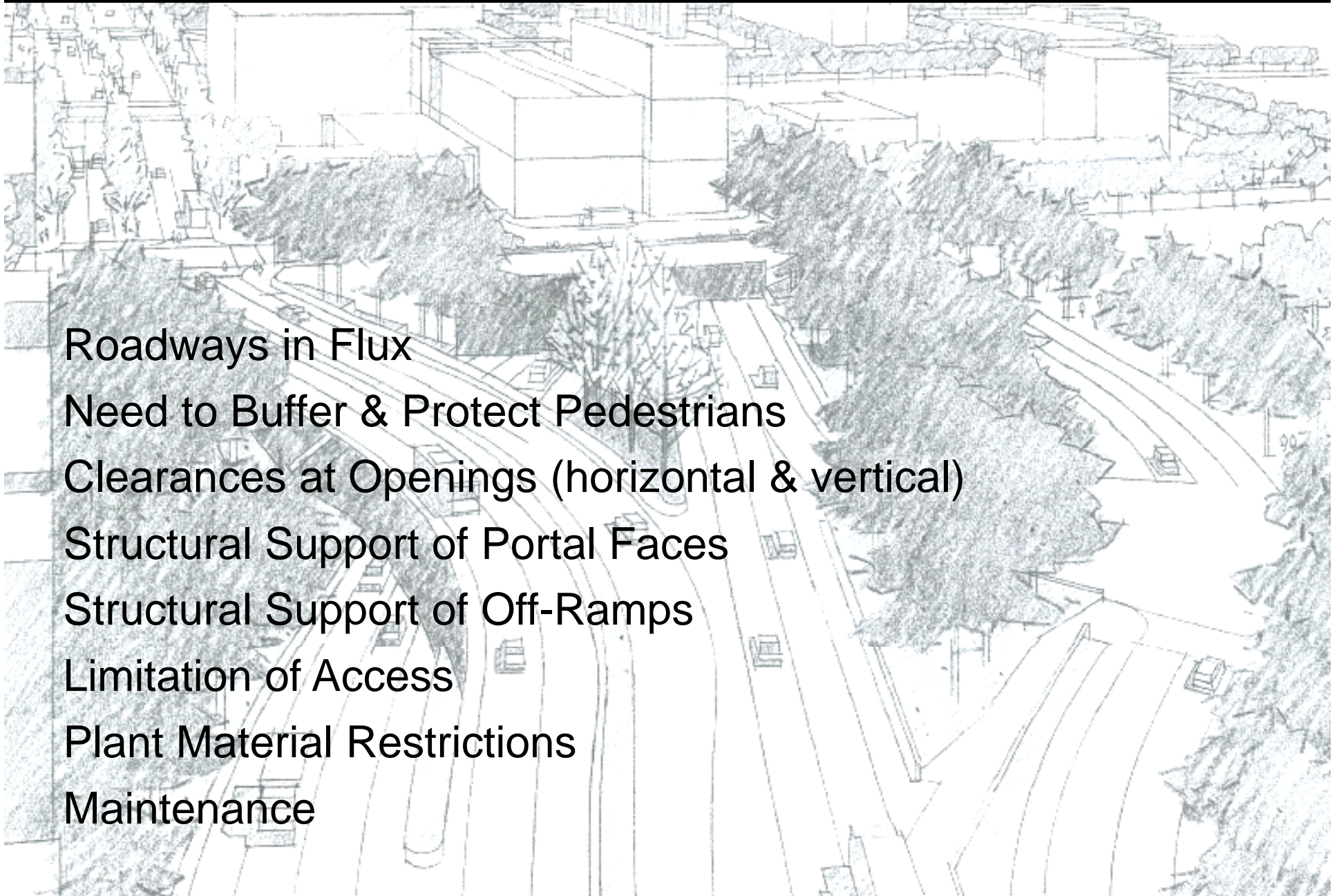
Structural Support of Portal Faces

Structural Support of Off-Ramps

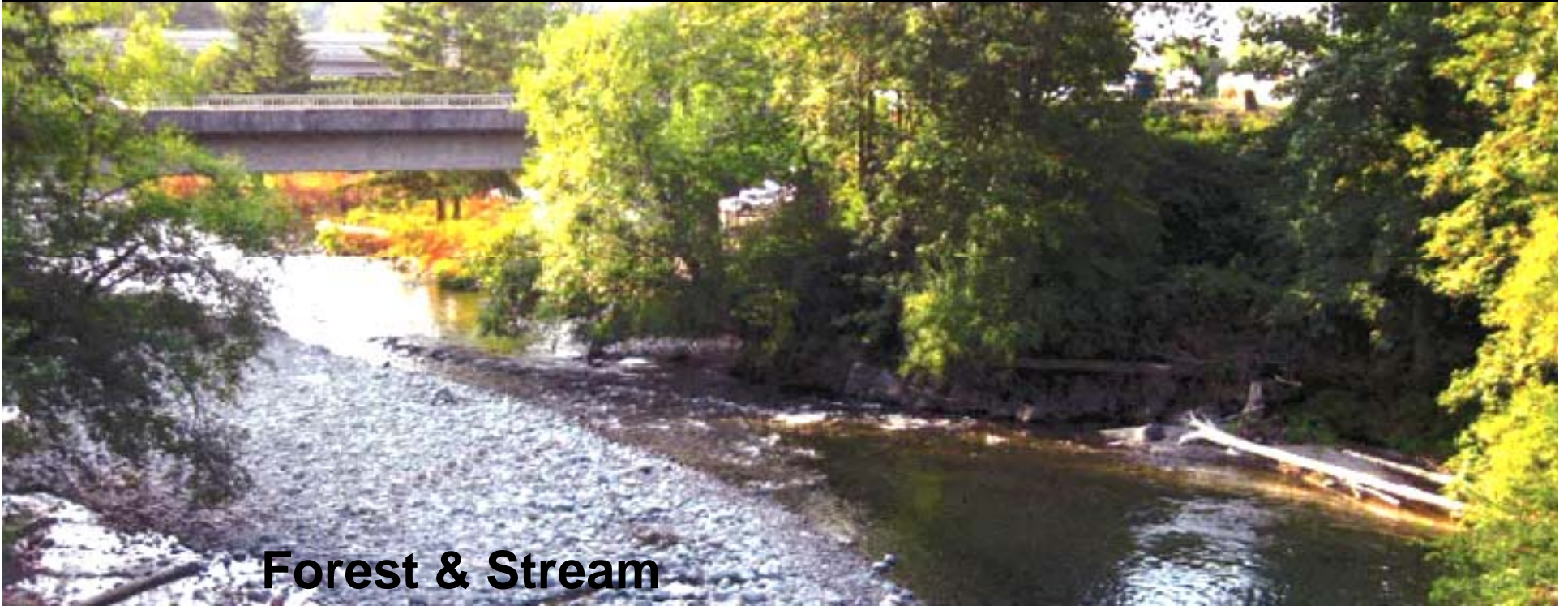
Limitation of Access

Plant Material Restrictions

Maintenance



Precepts



Forest & Stream

Embrace & Frame Openings

Emphasize Asymmetry

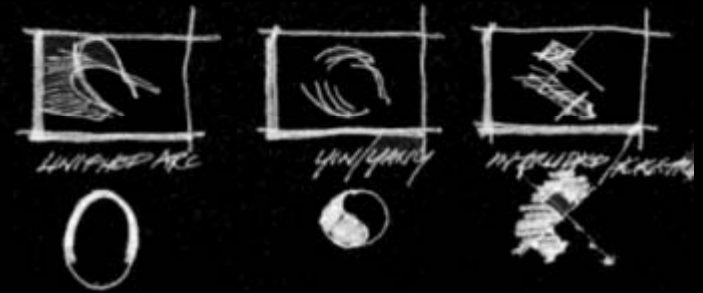
Relate to Operation Building

Light Transition

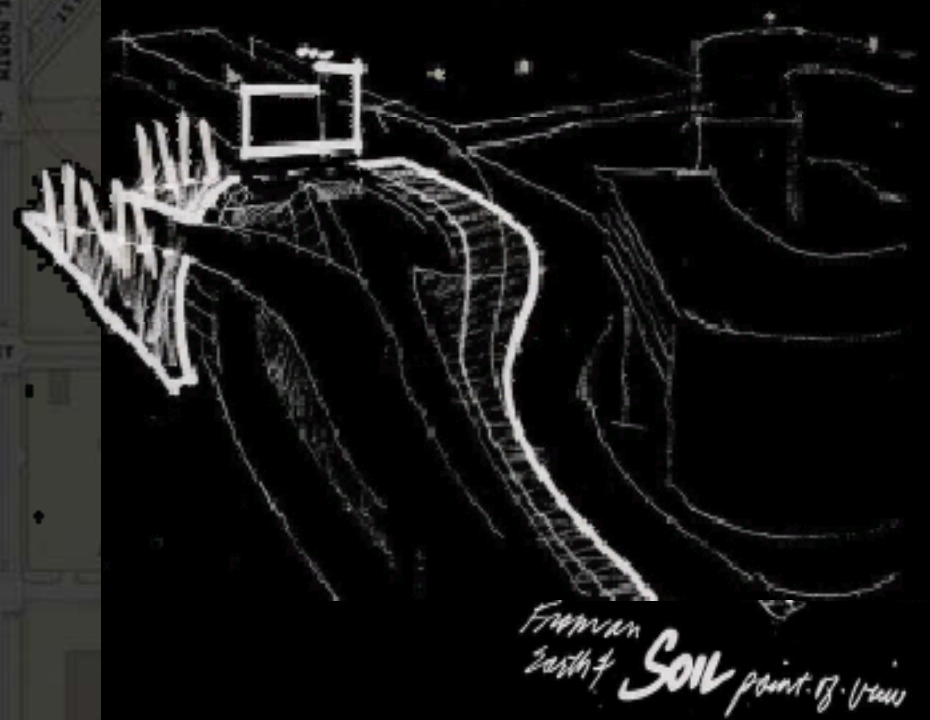
Integration of Water Retention

Plant for Seasonal Change

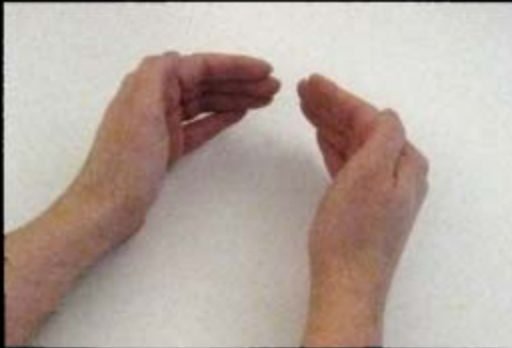
Exploration



Exploration

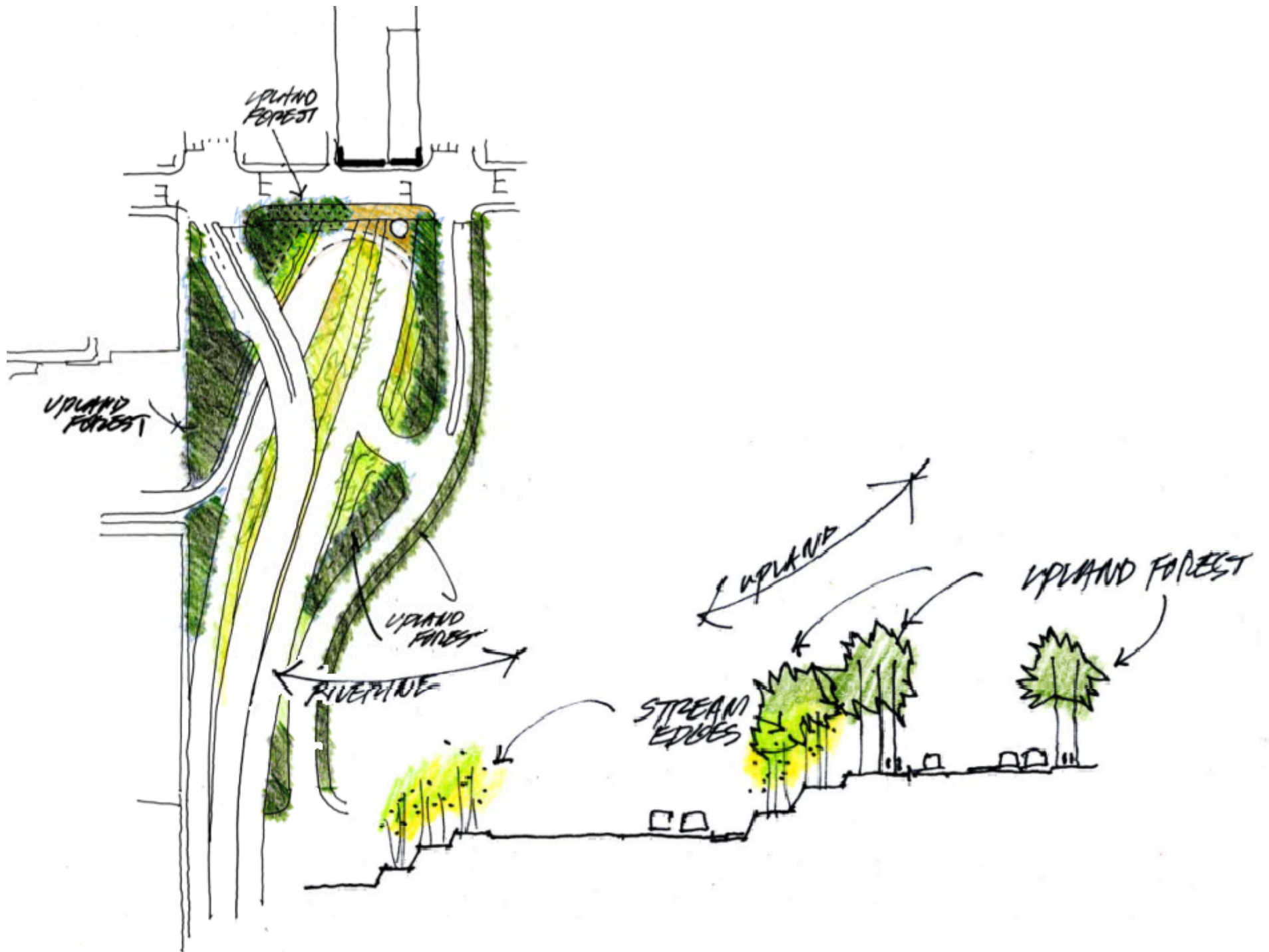


Exploration

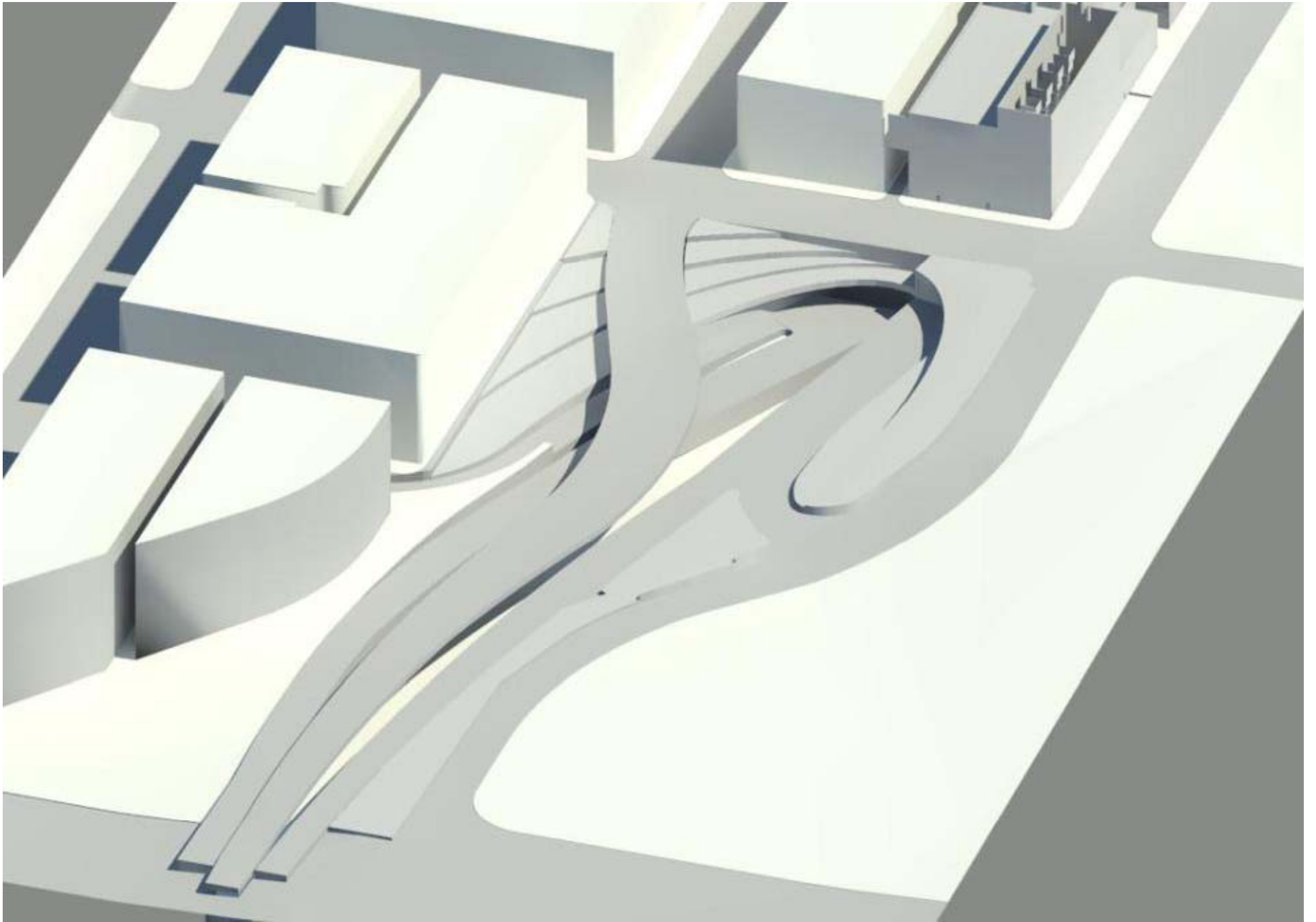


Exploration











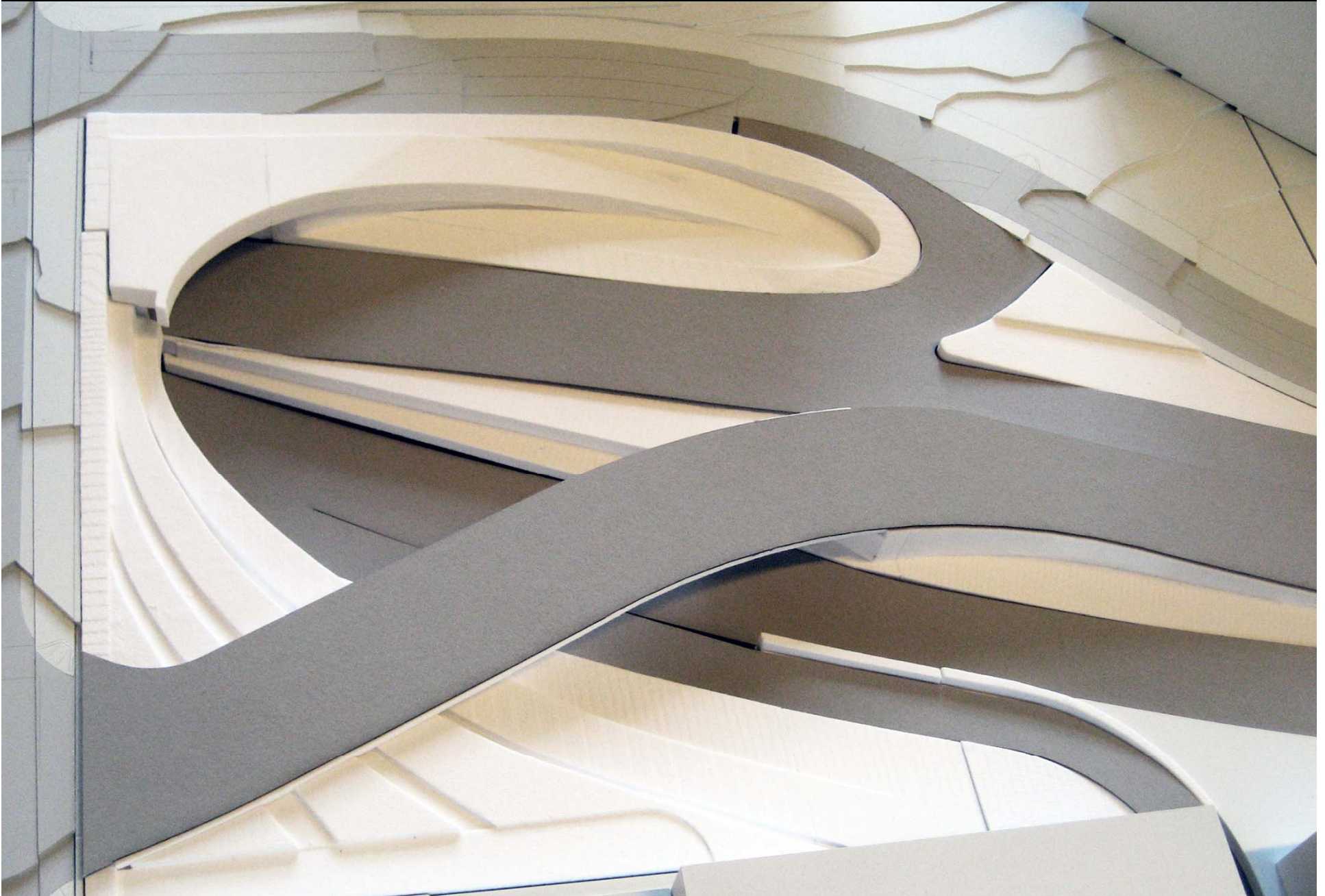








Models presented at Meeting



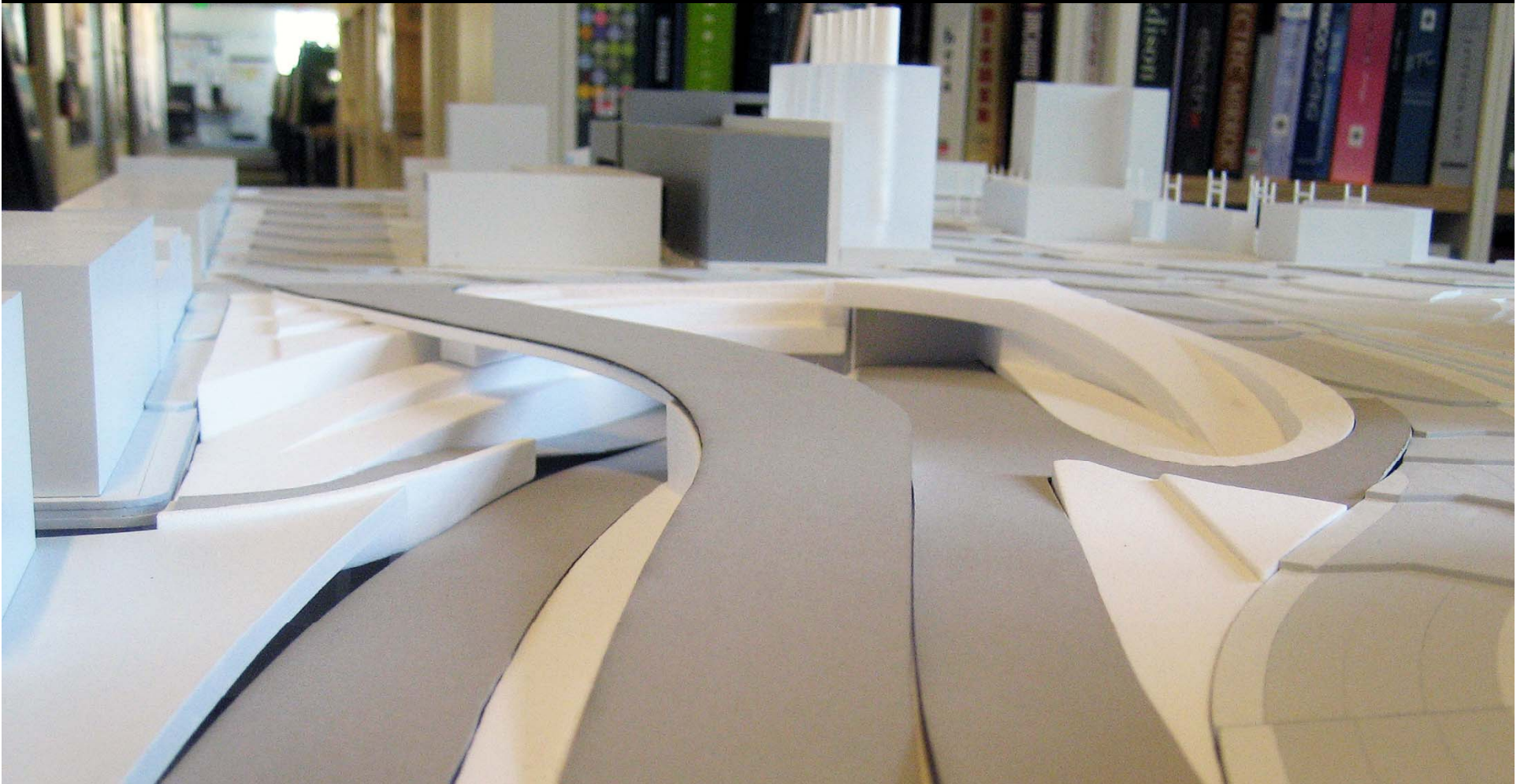
Models presented at Meeting



Models presented at Meeting



Models presented at Meeting



Models presented at Meeting

