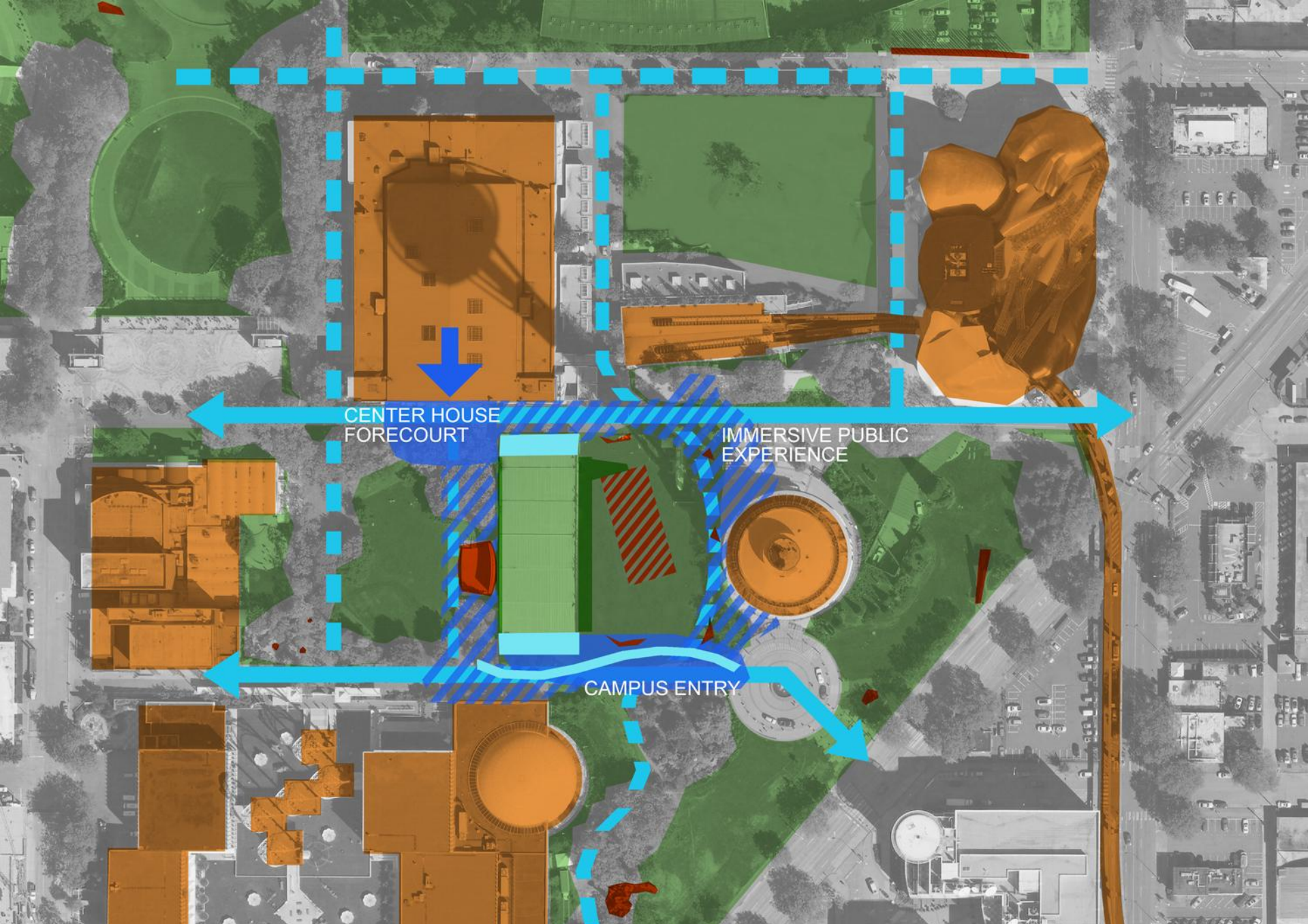


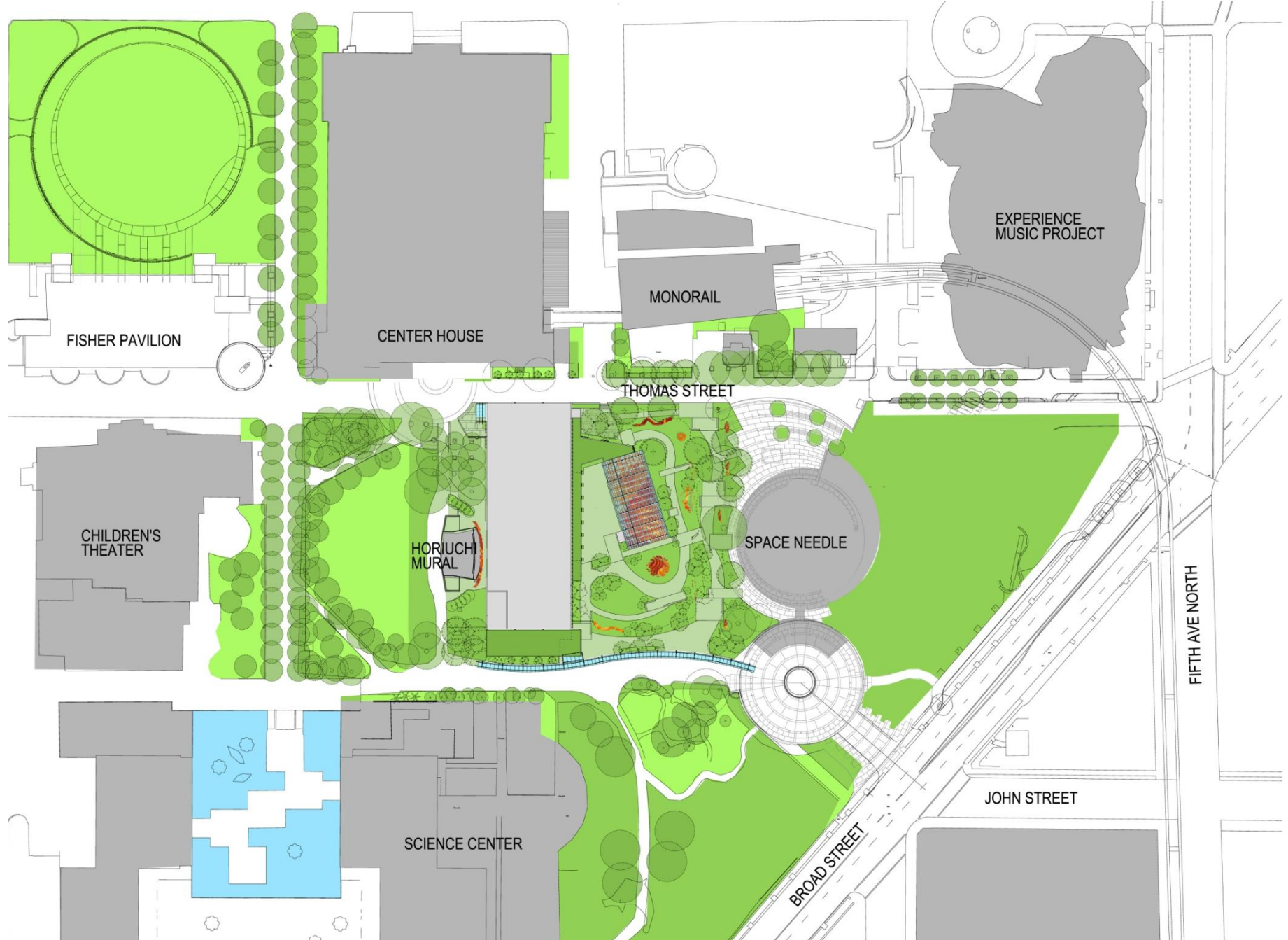
MASTER PLAN PRINCIPLES

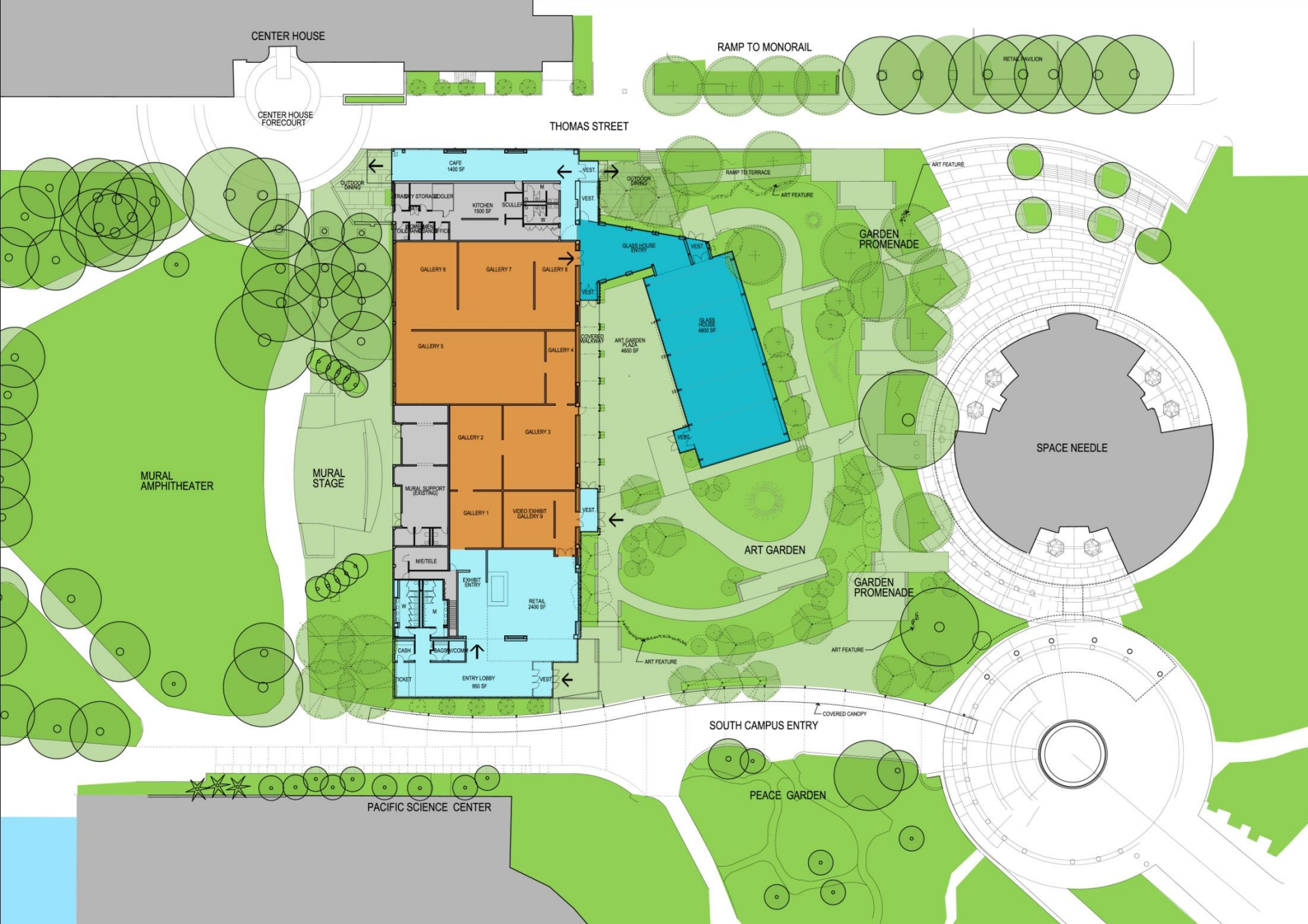
- Flexible & Dynamic Spaces
- Visual Openness & Sense of Place
- Art & Vibrant Programs
- Green Canvas & Urban Forest
- Drawn to the Center

DESIGN COMMISSION SCHEMATIC DESIGN COMMENTS

- Create a Dynamic Space that can evolve & change over time
- Reconsider Portals' Location and Character
- Canopy should serve campus first; connection to exhibit entry secondary
- Extend Lush Plantings beyond Site
- Design Mural Plantings so they will thrive & provide varied color
- Fence: Vary Height & Density, Meander & Extend to east side of Promenade
- Meander Garden Path to create bold eddies with places to linger
- Intersection of Space Needle paving and Promenade needs better resolution
- Keep east outdoor dining open to public more often than not
- Move Fence at Thomas Street to allow public to interact with vestibule facade



























Evocative landscape images:



Paving Materials:



Tree species:



Ulmus 'Frontier'



Kousa Dogwood



Yarwood London Planetree



Dove Tree



