



Seattle Design Commission: February 2010 Briefing Pedestrian-Scale Lighting





DEFINITION



Pedestrian-scale lights;

- Improve walkway illumination
- Increase pedestrian access
- Enhance community safety
- Improve business exposure
- Provide a sense of place



PROJECT GOALS

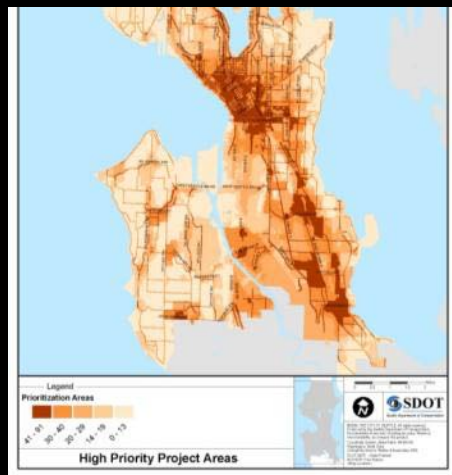


Improve how the City plans for, designs and implements pedestrian-scale lighting

Provide pedestrian-scale lighting for safety, pedestrian access, wayfinding, and sense of place



Planning



Design

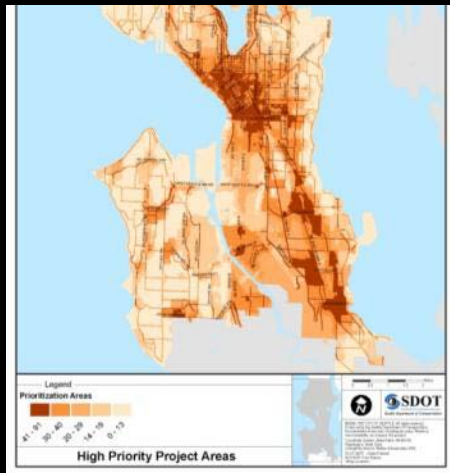


Implementation



Planning

Pedestrian-Scale Lighting Plan



Design

Standards in the Right-of-Ways Improvements Manual



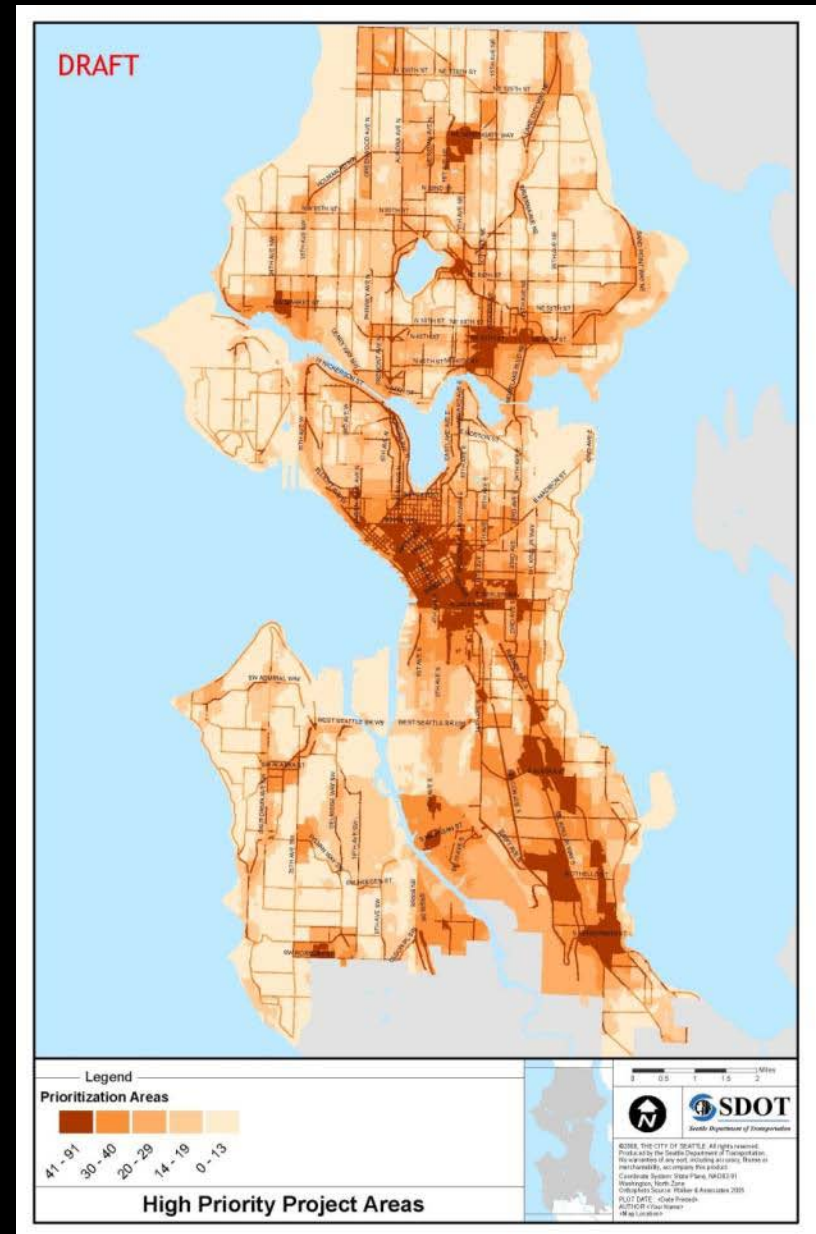
Implementation

Retrofitting for more efficient technology



PLANNING

Pedestrian Master Plan





PLANNING

Developing the Work Plan for 2010





PLANNING



PLANNING



PLANNING

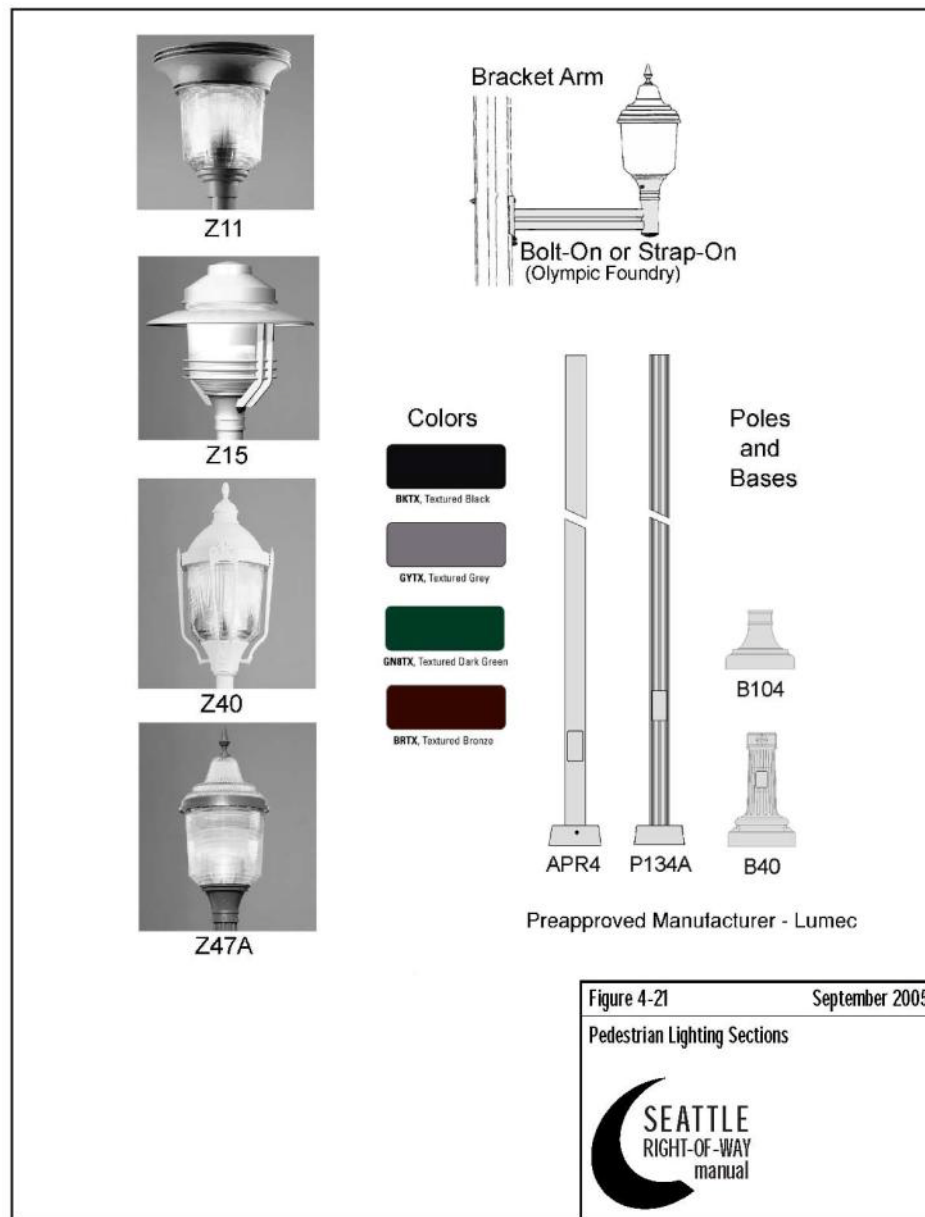


PLANNING



DESIGN

Right of Way Improvements Manual





IMPLEMENTATION (switch to LED)

Better Efficiency

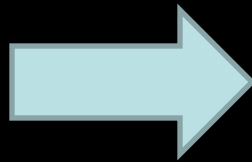
Life-cycle costs

Intensity, uniformity and glare issues

Terry Ave Fixture



Lumec Z11

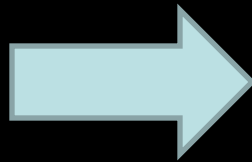


Cyclone CN11P1
GCN09

Modern Pedestrian Fixture



Lumec Z11

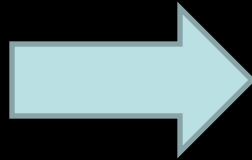


BetaLED Edge

Nautical Pedestrian Fixture



Lumec Z15



Cyclone CC11T4
GCC03