

# Seattle Pedestrian Master Plan



## Seattle Design Commission

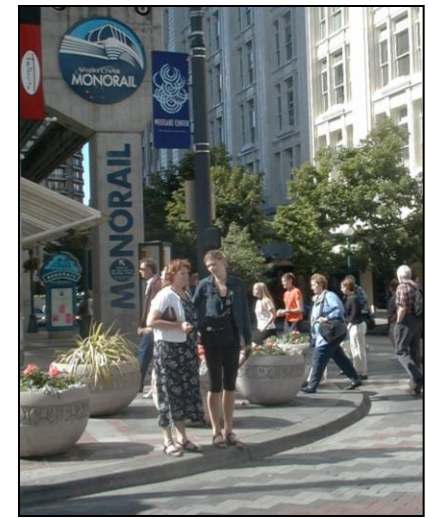
Briefing –  
July 3, 2008

Barbara Gray, AICP  
SDOT Policy & Planning

# Make Seattle the Most Walkable City in the Nation

Identify actions, projects, and programs to achieve the following goals:

- **Safety:** Reduce number and severity of crashes
- **Equity:** Engage all people and ensure equal investment
- **Vibrancy:** Create a lively pedestrian environment
- **Health:** Promote walking







# Part 1: Setting the Foundation

- Public engagement
- Walking preferences survey
- Roundtable discussions
- Pedestrian Master Plan Advisory Group



# Seattle Walks Day – May 10, 2008

- Hundreds of participants
- Groups of friends and neighbors walked favorite routes
- Surveys completed while walking





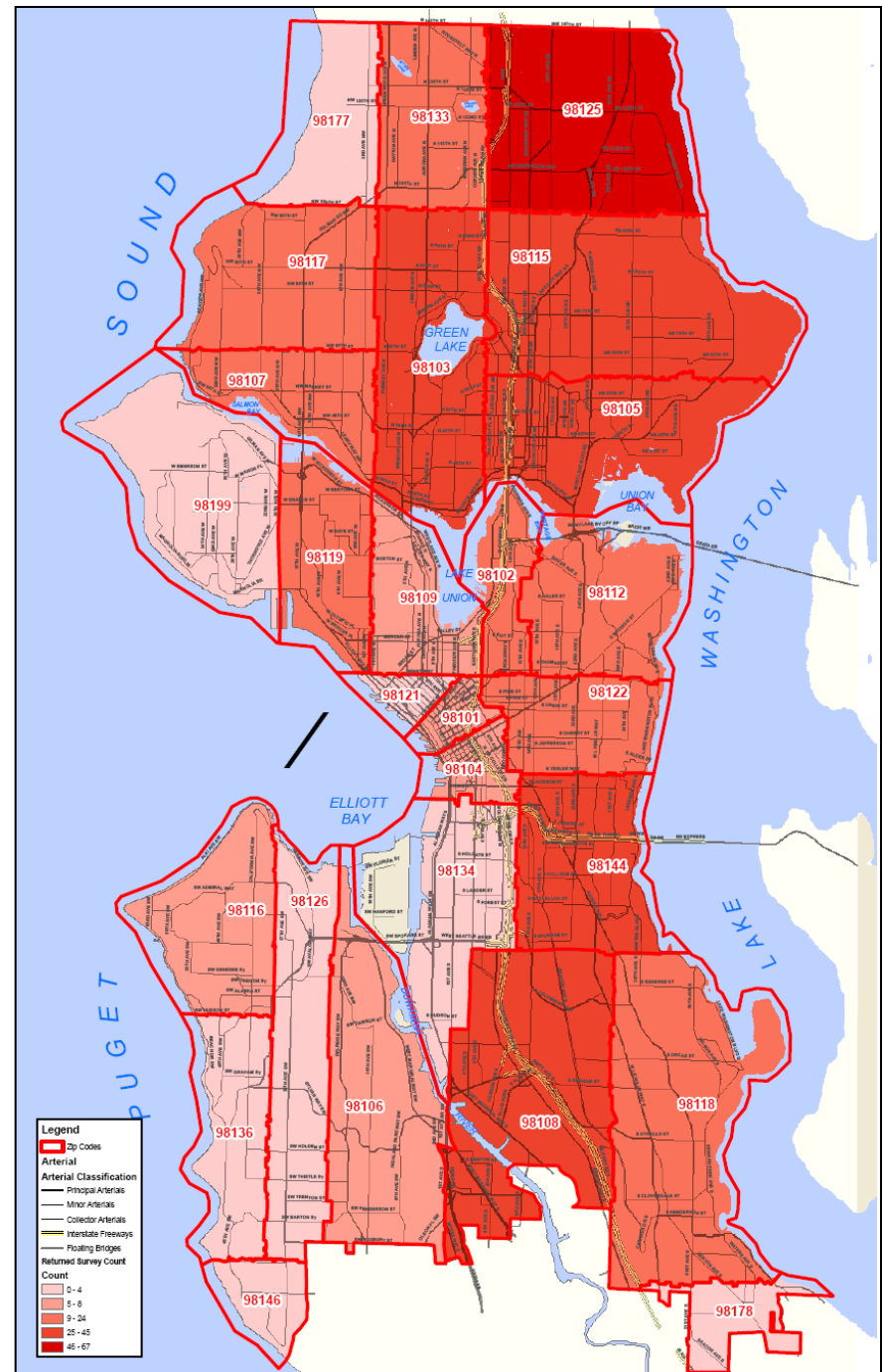
# Walking Preferences Survey

- Collect broad public input about Seattleites' walking preferences
- To understand:
  - Why do you walk?
  - Where do you walk?
  - What would help you walk more?
- Available in 9 languages, including English online
- Due to SDOT on September 15



# Survey Responses

- More than 500 responses received
- Tracking responses to tailor further outreach



# Roundtable Discussions

- Opportunity for groups of stakeholders to discuss pedestrian issues
- Completed four (4) discussions
  - Youth
  - Immigrants/Refugees
  - Accessibility
  - Business
- Four (4) planned for July
  - Encouragement
  - Builders/Developers
  - Community Development
  - Environment/Open Space





# Part 2: Existing Conditions & Tools

- State of the Pedestrian Environment Report
- Pedestrian Toolbox



# State of the Pedestrian Environment Report

- Snapshot of existing conditions
- Focuses on physical infrastructure
- Identifies benefits of all types of walking as well as existing challenges and constraints





# Snapshot of Existing Conditions

- Seattle is considered a national leader regarding pedestrian policies and facilities
- There are still challenges to address in order to make Seattle the most walkable city



Arterial Traffic Calming in West Seattle



Streets without sidewalks can be a challenge for pedestrians



# Snapshot of Existing Conditions



# Highlights: Health & Community

- Health benefits of regular physical activity are far reaching
- Convenient walking facilities encourage people to walk more and connect to their community
- More than 12% of Seattle residents over the age of five have a disability
- Seattle consistently ranks among the safest cities of its size for pedestrian travel





# Highlights: Land Use & Economics

- Land use and urban design impact the walking environment
- Active, well-lit streets promote commercial exchange and encourage pedestrian activity
- The average family works more than six weeks to pay for one year of car expenses





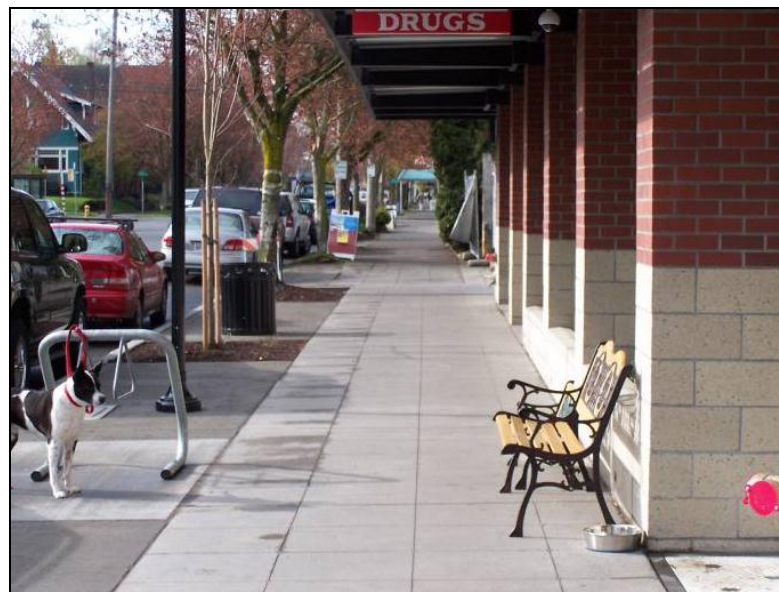
# Highlights: Infrastructure

- Sidewalks, stairways, and signals are important parts of our walking network
- Wide, high quality buffers between the sidewalk and moving traffic make walking more comfortable
- Bridges and highway interchanges can make it difficult to walk between neighborhoods
- Construction zones that close sidewalks are challenges for pedestrians
- Walkways, trees, and landscaping should be well maintained to support a comfortable walking environment



# Toolbox of Strategies & Solutions

- Inform future policy, funding, and operational practices
- Subjects covered include: enforcement, design, land use, funding, environment
- Explore programs, tools, techniques, best practices
- Developing with input from inter-agency team and PMPAG



# Coming Up Next in Summer & Fall 2008

- Continue to distribute and collect surveys
- Complete data review, updates, and analysis
- Finalize toolbox of strategies and solutions, including best practices information
- Complete roundtable discussions with key stakeholder groups
- Host Pro-Walk/Pro-Bike Conference in September
- Evaluate solutions and develop plan





# Seattle Pedestrian Master Plan

## Questions & Discussion

