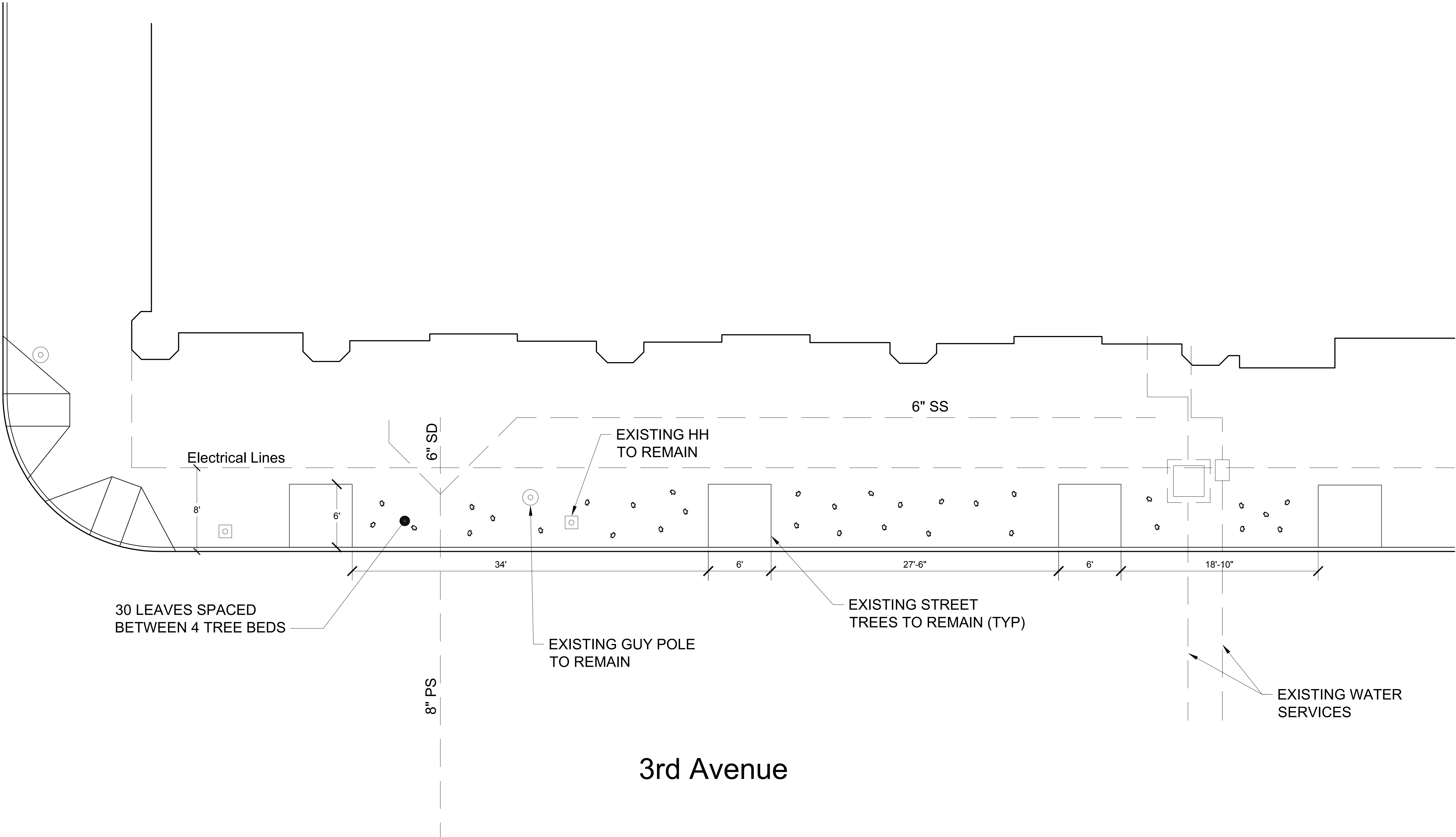


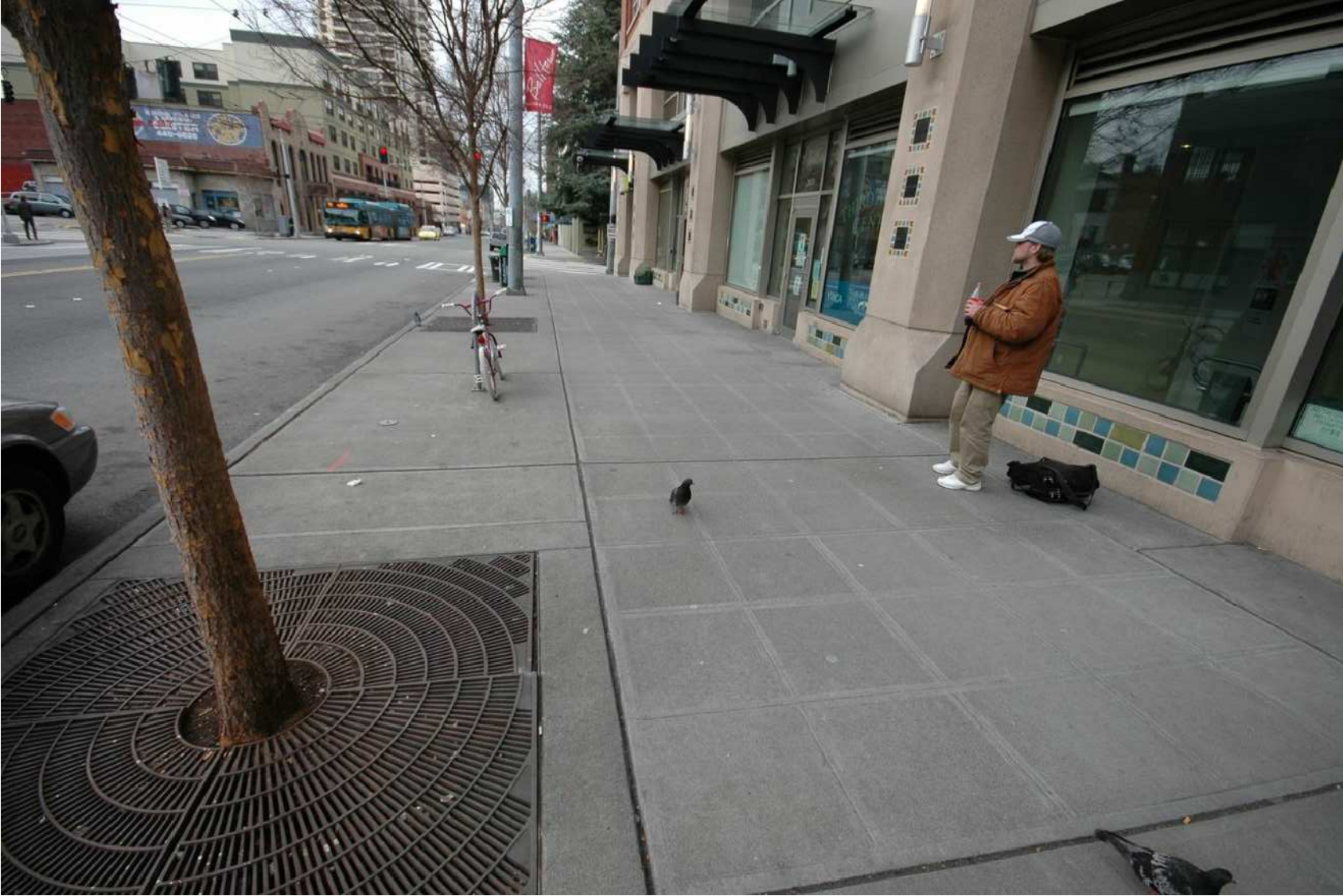
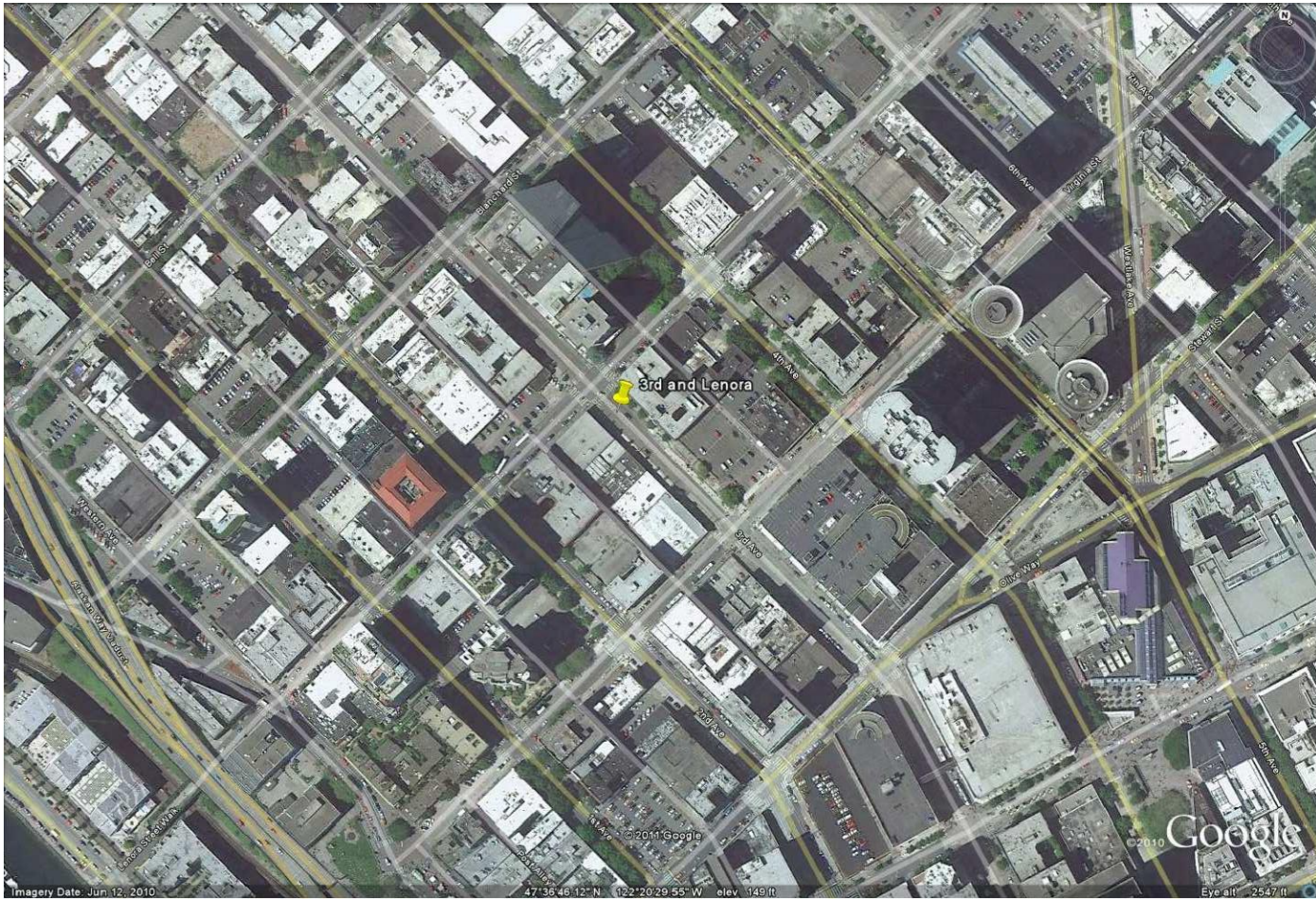
Lenora Street



3rd Avenue

1 3RD AND LENORA STREET SITE

Scale: 3/16" = 1'-0"



PROJECT TEAM:

ARTIST:

Clark Wiegman  
1214 NW 121st  
Seattle, Washington 98177  
Ph: 206.669.6082

ARCHITECT:

KIM LOKAN architecture  
3933 Burke Avenue North  
Seattle, Washington 98103  
Ph: 206.795.7962

LANDSCAPE ARCHITECT:

KAREN Kiest landscape Architects  
101 West John Street, Suite 305  
Seattle, Washington 98119  
Ph: 206.323.6032

3		
2		
1		
NO.	REVISION	AS BUILT
		DATE

REVIEWED:	PARK ENGINEER	DATE
All work done in accordance with the City of Seattle Standard Plans and Specifications in effect on the date shown above, and supplemented by Special Provisions.		

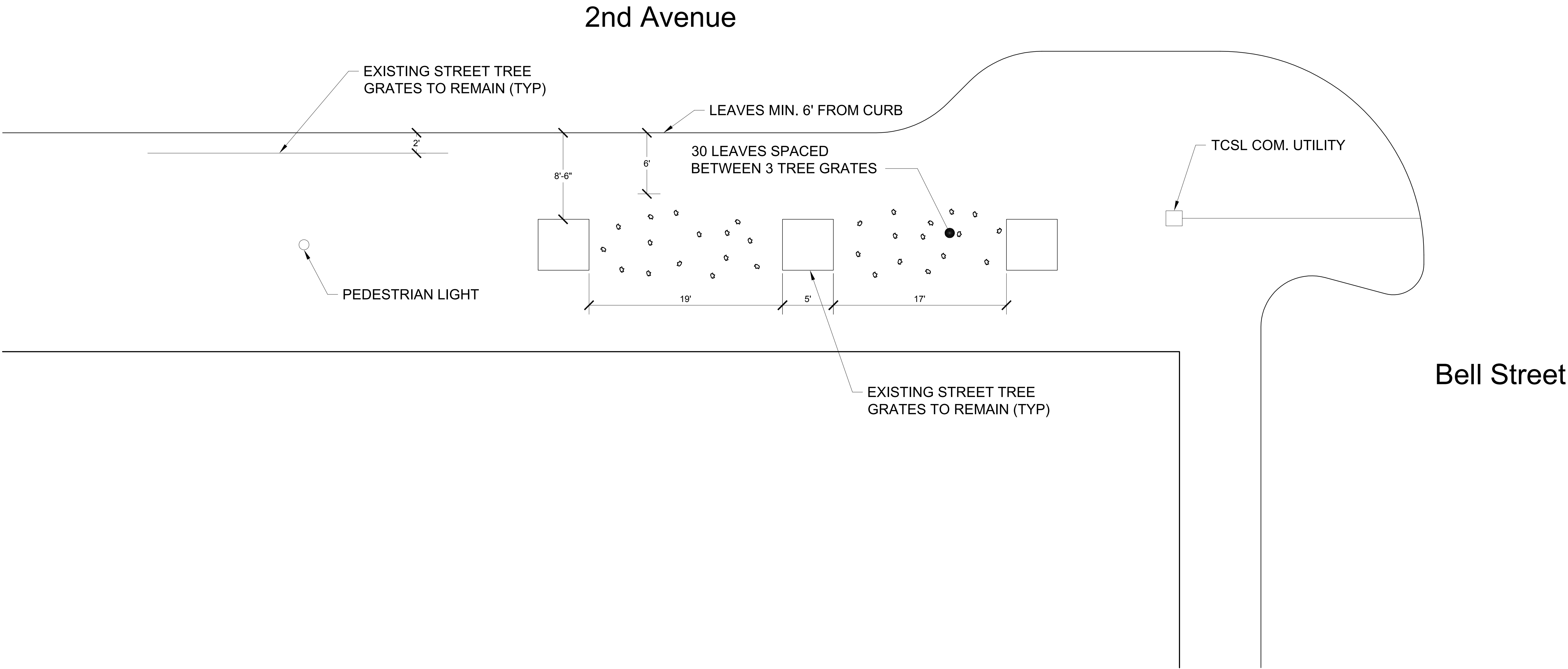


Angeline's & YMCA Opportunity Place (3rd & Lenora)

SIDEWALK LEAVES

SITE PLAN

DESIGNED	Clark Wiegman	DATE	3-30-2011
DRAWN	John Stout	SHEET	1 OF 5
CHECKED			
ORDINANCE NO.			P1.0
CONTRACT NO.			
SCALE			



PROJECT TEAM:

ARTIST:

Clark Wiegman  
1214 NW 121st  
Seattle, Washington 98177  
Ph: 206.669.6082

ARCHITECT:

KIM LOKAN architecture  
3933 Burke Avenue North  
Seattle, Washington 98103  
Ph: 206.795.7962

LANDSCAPE ARCHITECT:

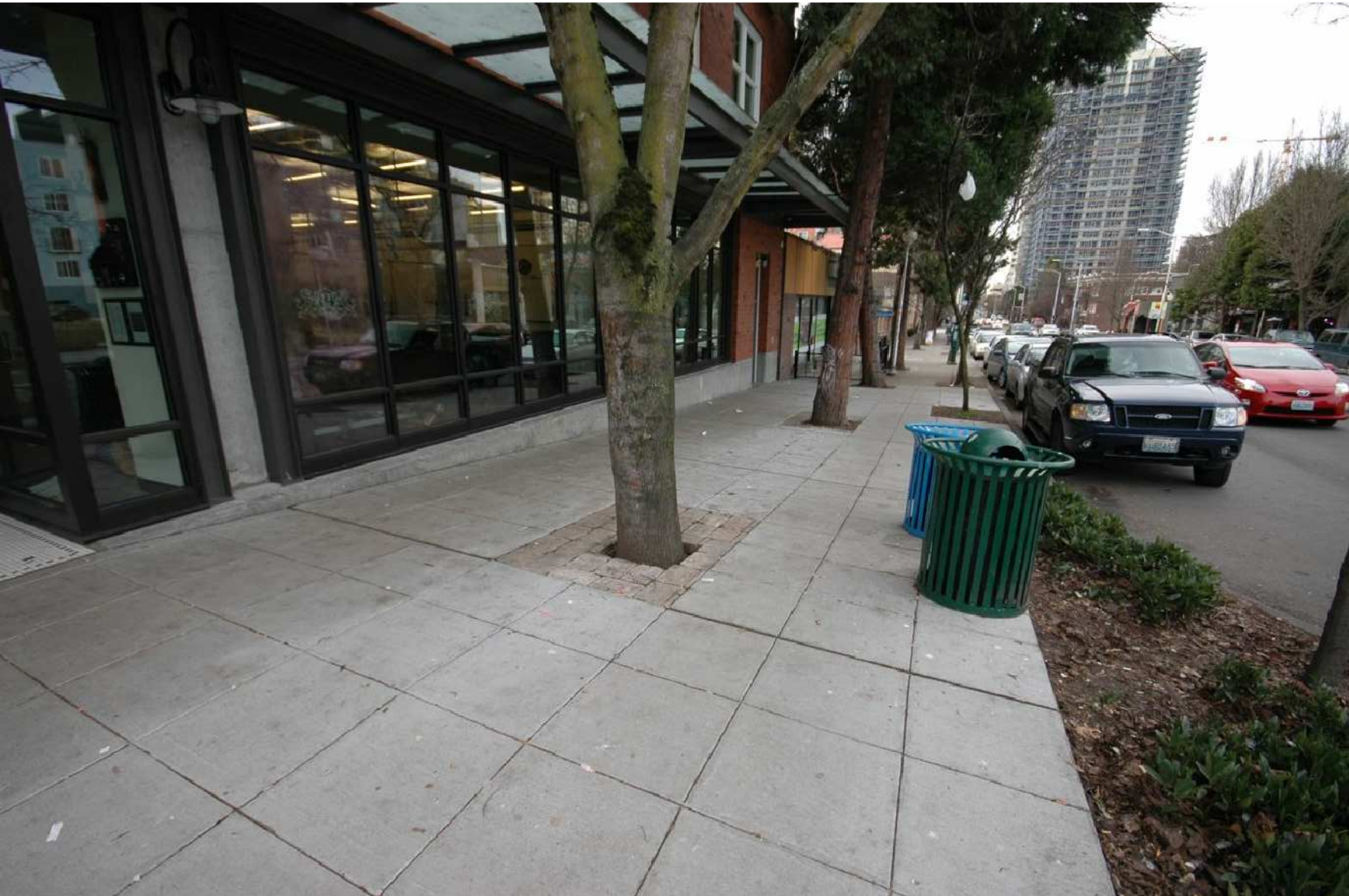
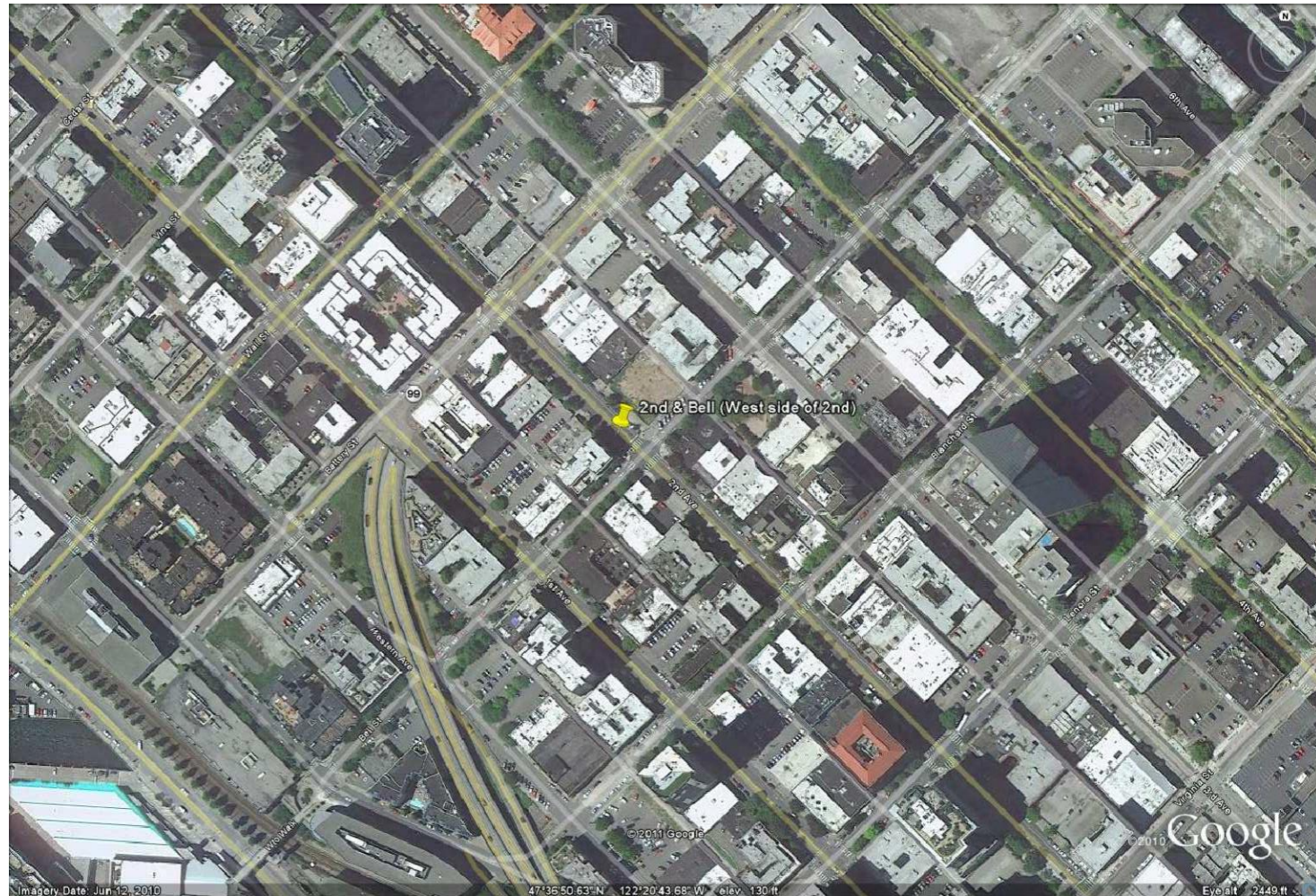
KAREN Kiest landscape Architects  
101 West John Street, Suite 305  
Seattle, Washington 98119  
Ph: 206.323.6032

3		
2		
1		
NO.	REVISION	AS BUILT
		DATE

REVIEWED:	PARK ENGINEER	DATE
-----------	---------------	------

All work done in accordance with the City of Seattle Standard Plans and Specifications in effect on the date shown above, and supplemented by Special Provisions.

1 2ND AND BELL STREET SITE  
Scale: 3/16" = 1'-0"



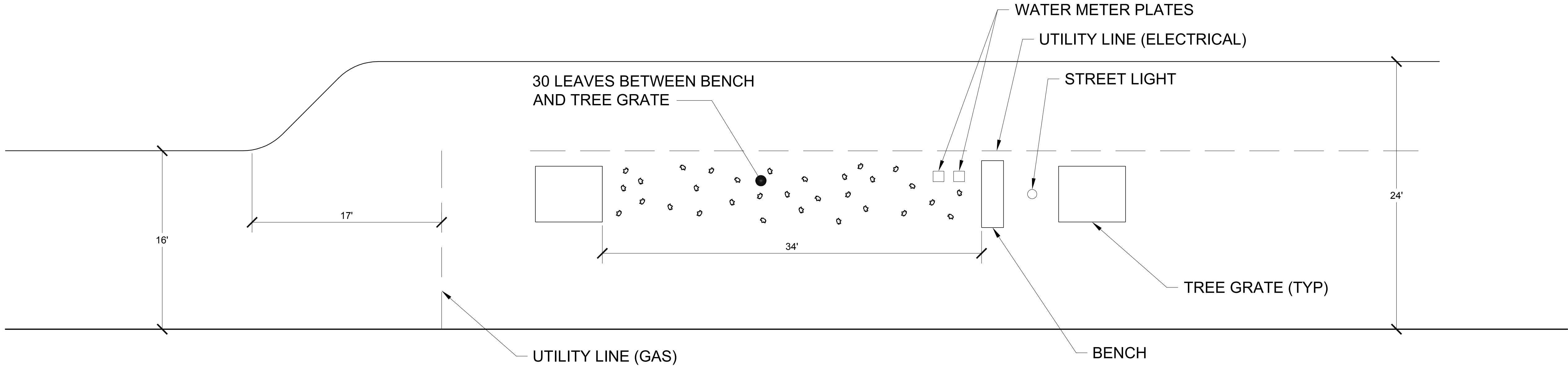
Noel House (2nd & Bell)

SIDEWALK LEAVES

SITE PLAN

DESIGNED	Clark Wiegman	DATE	3-30-2011
DRAWN	John Stout	SHEET	2 OF 5
CHECKED			
ORDINANCE NO.			P2.0
CONTRACT NO.			
SCALE			

3rd Avenue



PROJECT TEAM:

ARTIST:  
Clark Wiegman  
1214 NW 121st  
Seattle, Washington 98177  
Ph: 206.669.6082

ARCHITECT:  
KIM LOKAN architecture  
3933 Burke Avenue North  
Seattle, Washington 98103  
Ph: 206.795.7962

LANDSCAPE ARCHITECT:  
KAREN Kiest landscape Architects  
101 West John Street, Suite 305  
Seattle, Washington 98119  
Ph: 206.323.6032

3		
2		
1		
NO.	REVISION	AS BUILT
		DATE

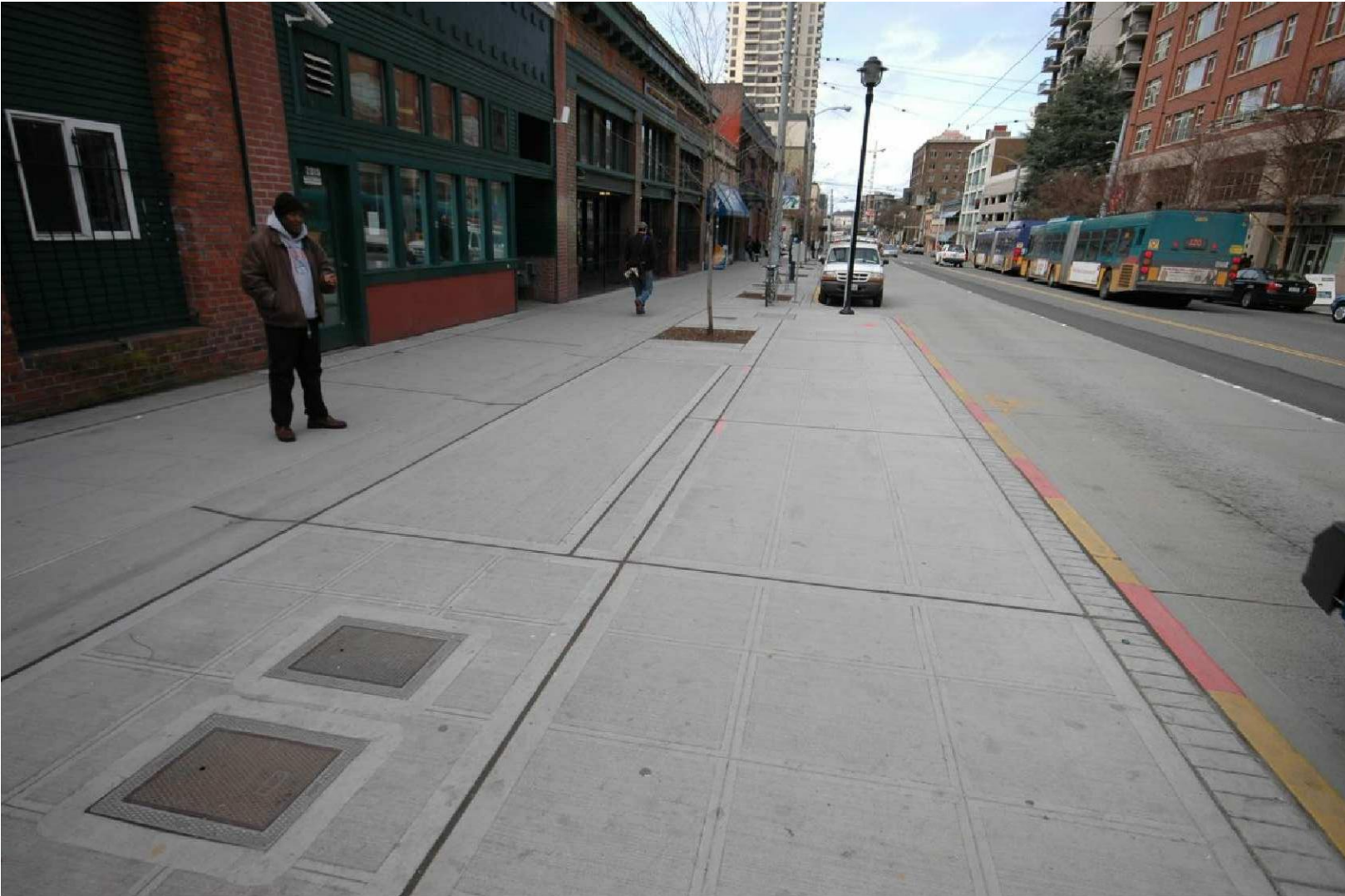
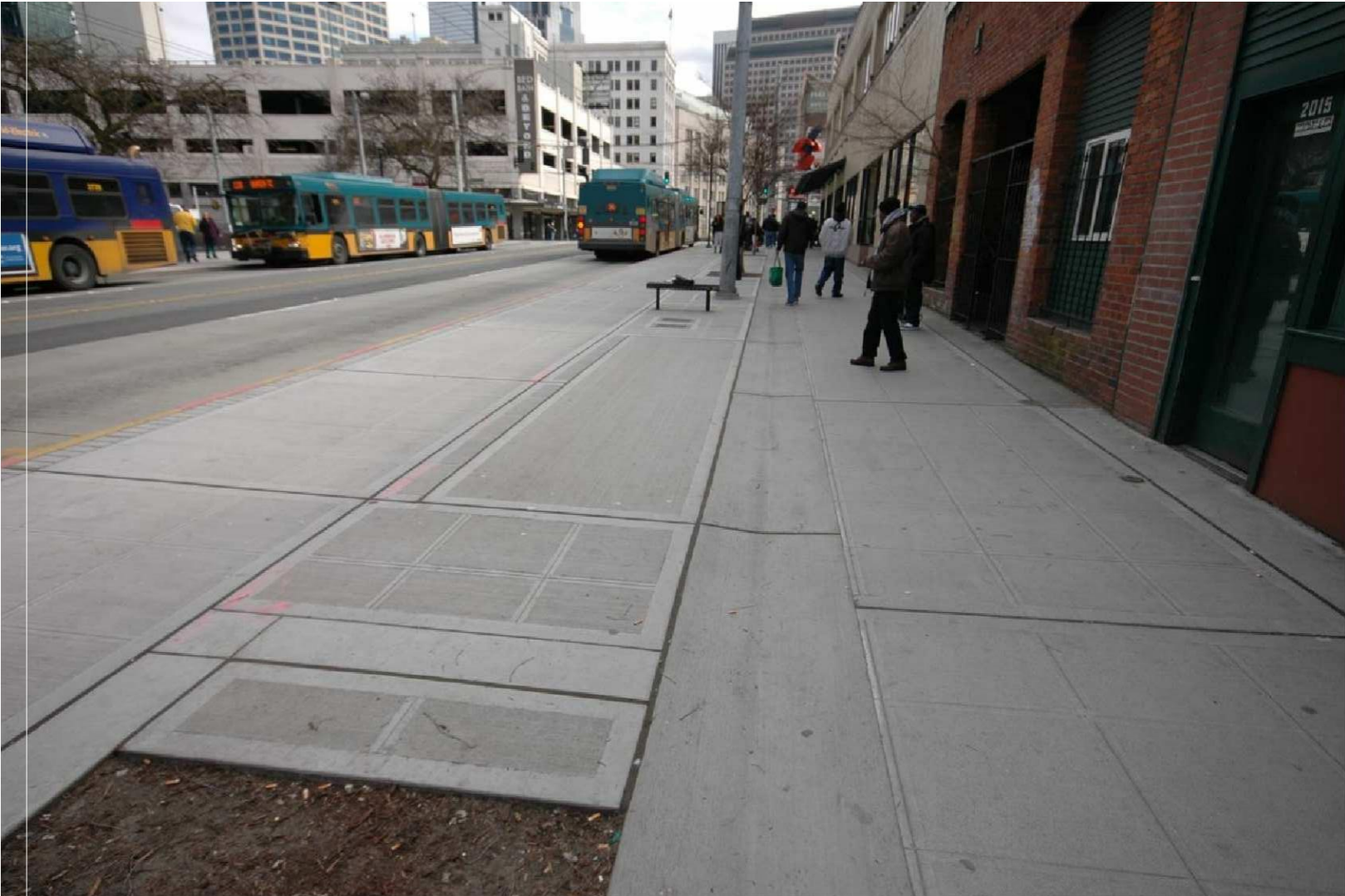
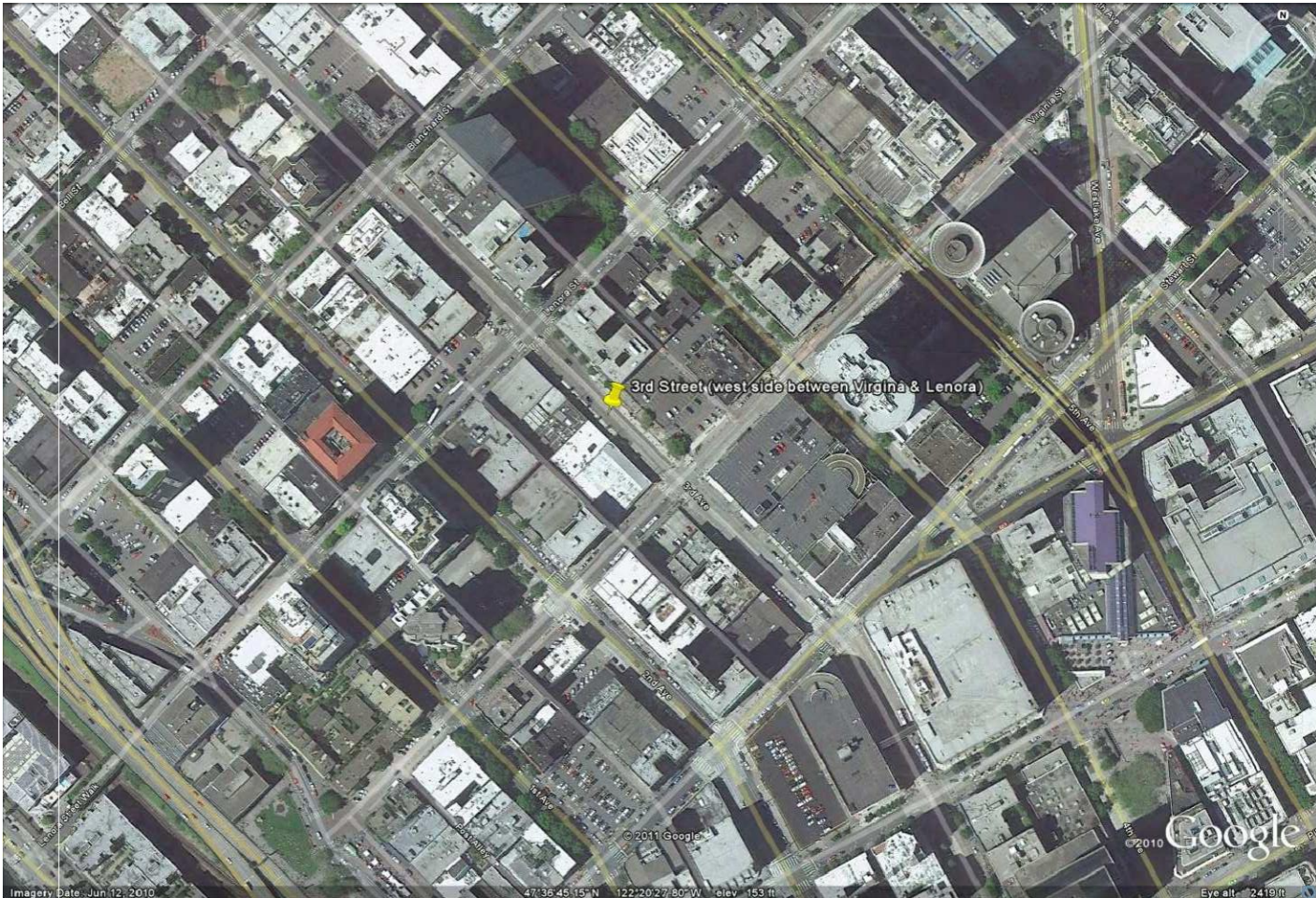
REVIEWED: PARK ENGINEER DATE

All work done in accordance with the City of Seattle Standard Plans and Specifications in effect on the date shown above, and supplemented by Special Provisions.

1

3RD AVENUE SITE

Scale: 3/16" = 1'-0"



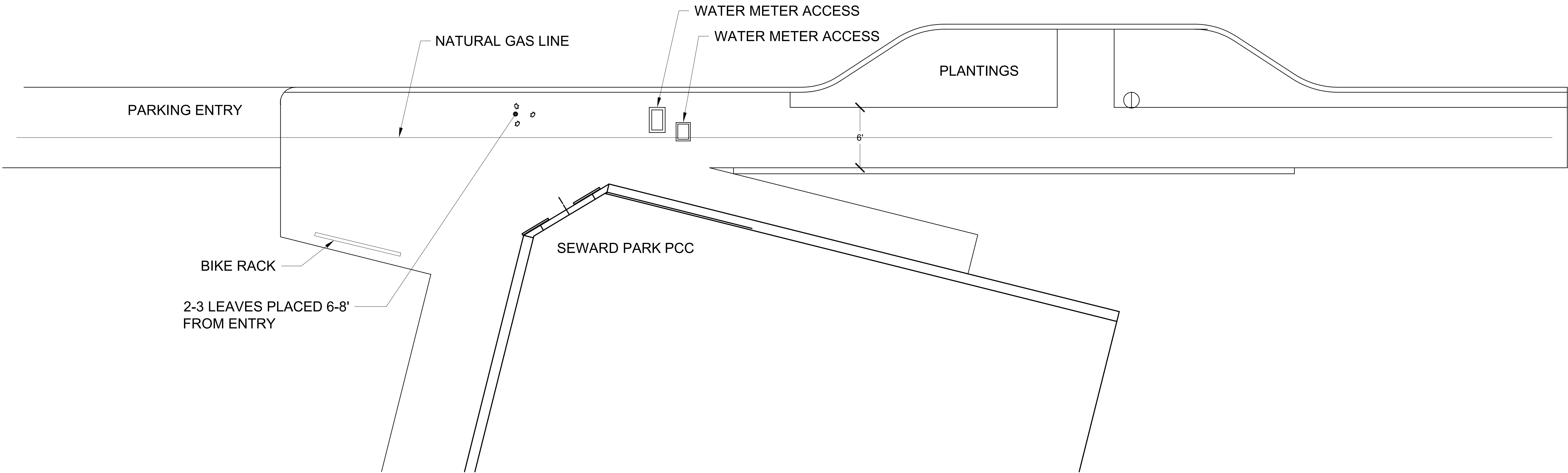
Compass Housing Alliance Family and Adult Service Center (3rd Ave)

SIDEWALK LEAVES

SITE PLAN

DESIGNED	Clark Wiegman	DATE	3-30-2011
DRAWN	John Stout	SHEET	3 OF 5
CHECKED			
ORDINANCE NO.			P3.0
CONTRACT NO.			
SCALE			

# Wilson Avenue South



**1 SEWARD PARK PCC SITE**  
Scale: 3/16" = 1'-0"



## PROJECT TEAM:

### ARTIST:

Clark Wiegman  
1214 NW 121st  
Seattle, Washington 98177  
Ph: 206.669.6082

### ARCHITECT:

KIM LOKAN architecture  
3933 Burke Avenue North  
Seattle, Washington 98103  
Ph: 206.795.7962

### LANDSCAPE ARCHITECT:

KAREN Kiest landscape Architects  
101 West John Street, Suite 305  
Seattle, Washington 98119  
Ph: 206.323.6032

3		
2		
1		
NO.	REVISION	DATE

REVIEWED:	PARK ENGINEER	DATE
-----------	---------------	------

All work done in accordance with the City of Seattle Standard Plans and Specifications in effect on the date shown above, and supplemented by Special Provisions.

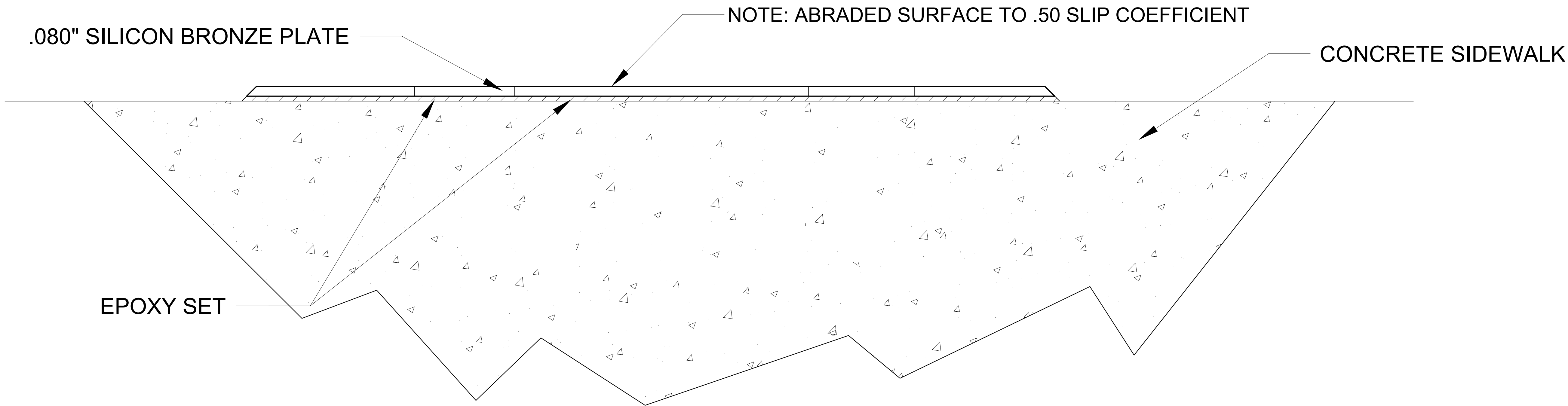
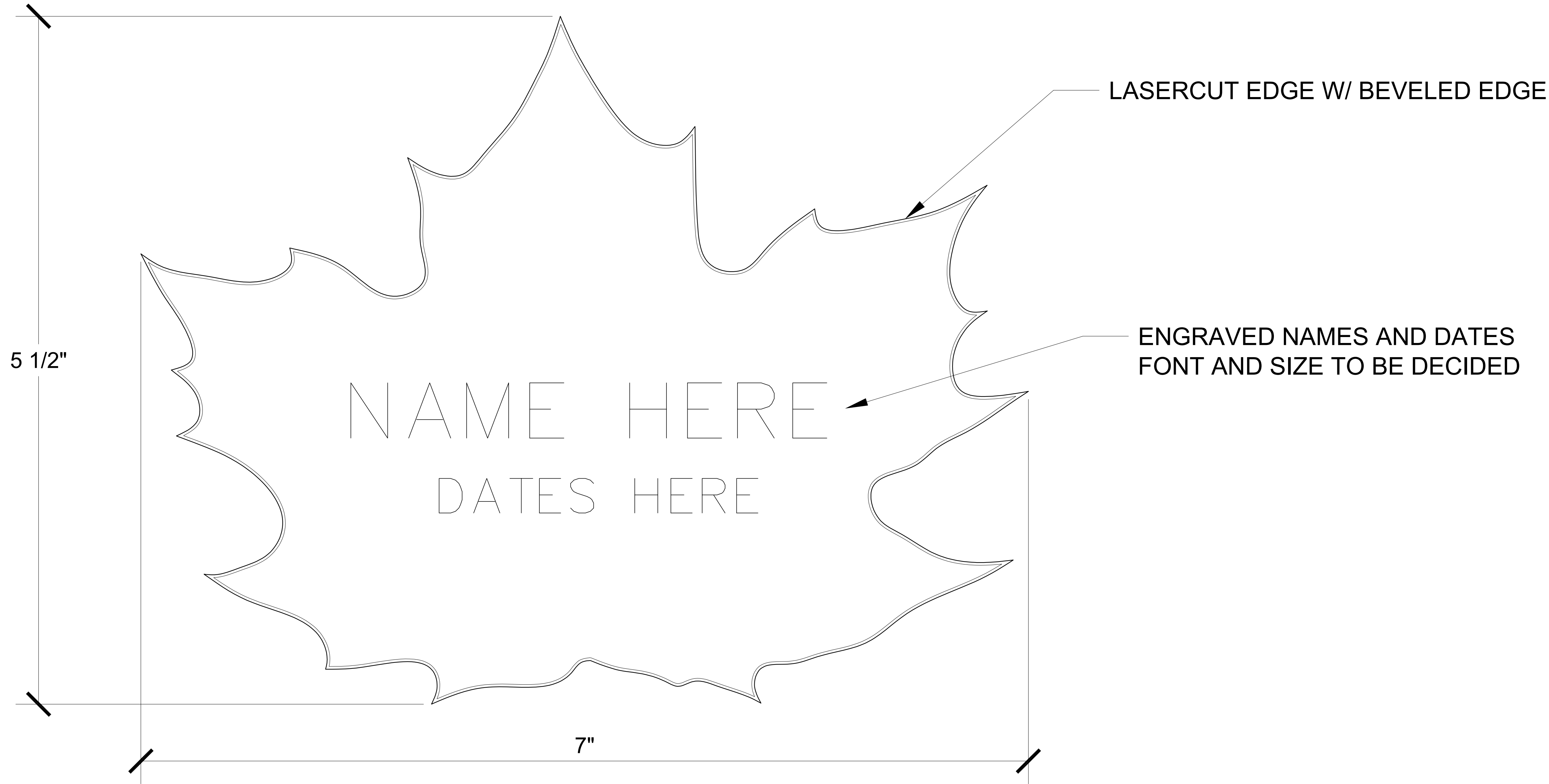


**Seward Park PCC  
( Wilson Avenue South )**

## SIDEWALK LEAVES

### SITE PLAN

DESIGNED	Clark Wiegman	DATE	3-30-2011
DRAWN	John Stout	SHEET	4 OF 5
CHECKED			
ORDINANCE NO.			<b>P4.0</b>
CONTRACT NO.			
SCALE			



**1 SIDEWALK LEAF DETAIL AND SECTION**  
Scale: 2 : 1

**PROJECT TEAM:**

**ARTIST:**

Clark Wiegman  
1214 NW 121st  
Seattle, Washington 98177  
Ph: 206.669.6082

**ARCHITECT:**

KIM LOKAN architecture  
3933 Burke Avenue North  
Seattle, Washington 98103  
Ph: 206.795.7962

**LANDSCAPE ARCHITECT:**

KAREN Kiest landscape Architects  
101 West John Street, Suite 305  
Seattle, Washington 98119  
Ph: 206.323.6032

3		
2		
1		
NO.	REVISION -- AS BUILT	DATE

REVIEWED:	PARK ENGINEER	DATE
-----------	---------------	------

All work done in accordance with the City of Seattle Standard Plans and Specifications in effect on the date shown above, and supplemented by Special Provisions.



**SIDEWALK LEAVES**

**LEAF DETAIL**

DESIGNED	Clark Wiegman	DATE	3-30-2011
DRAWN	John Stout	SHEET	5 OF 5
CHECKED			
ORDINANCE NO.			P5.0
CONTRACT NO.			
SCALE			