



design commission 20 march 2008

fire station no.30
city of seattle fleets & facilities
schacht aslani architects



urban context

fire station no.30
city of seattle fleets & facilities
schacht | aslani architects



site analysis

franklin high school

fire station no. 30

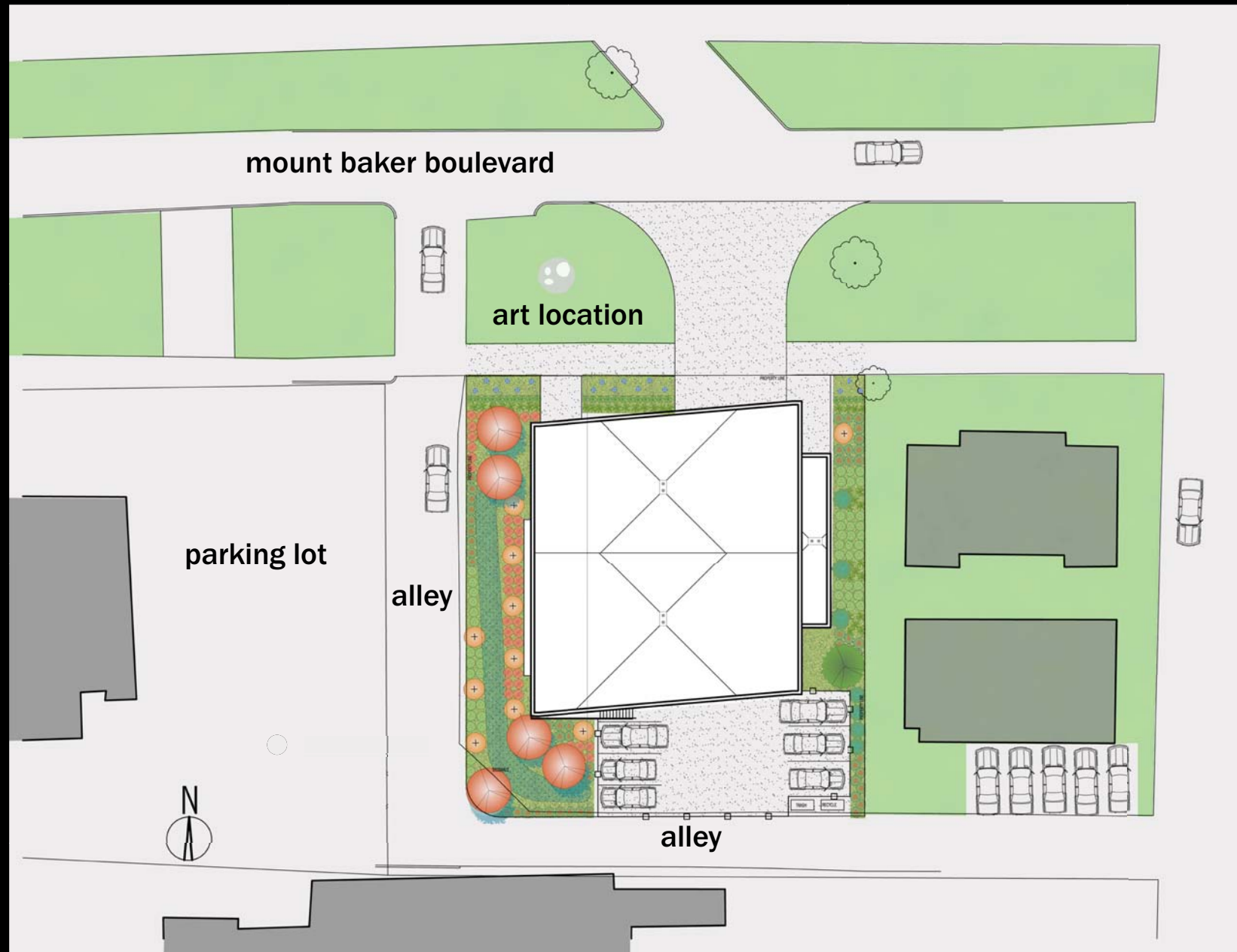
looking southeast from rainier ave

fire station no.30
city of seattle fleets & facilities
schacht | aslani architects

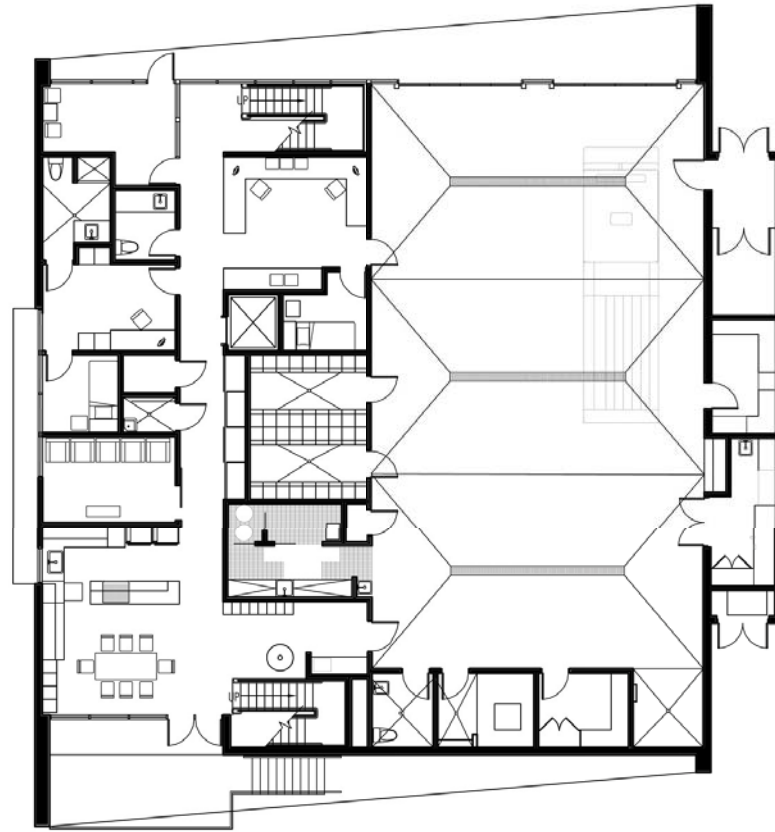


design development

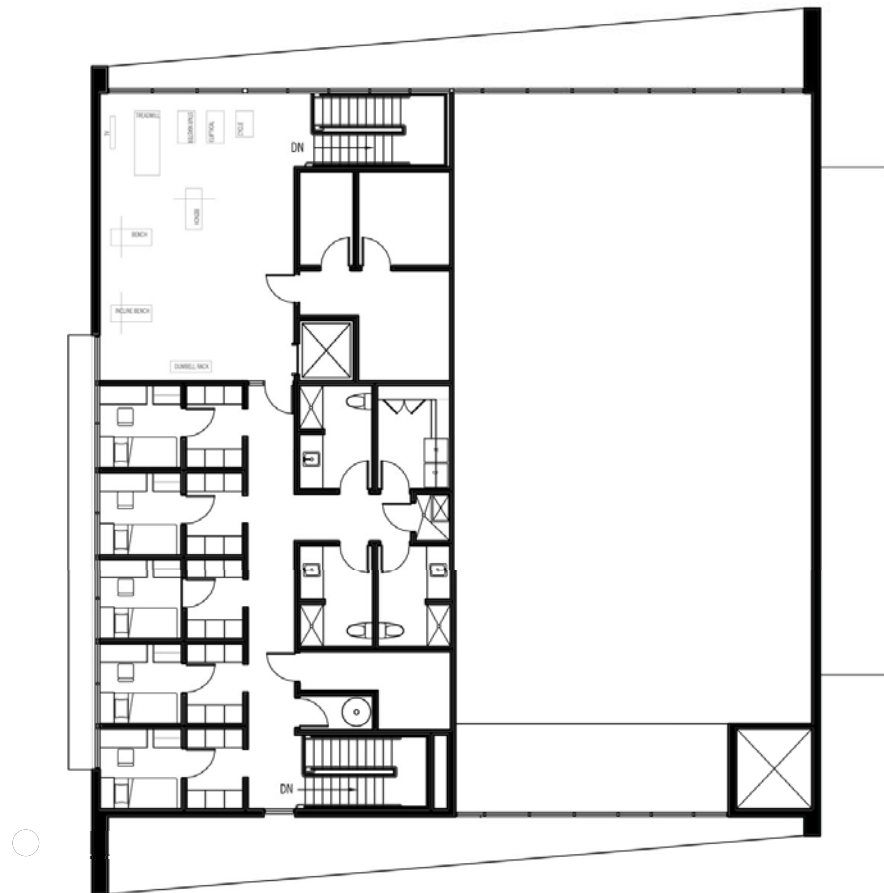
fire station no.30
city of seattle fleets & facilities
schacht | aslani architects



site plan



lower floor plan



upper floor plan



elevations

fire station no.30
city of seattle fleets & facilities
schacht | aslani architects



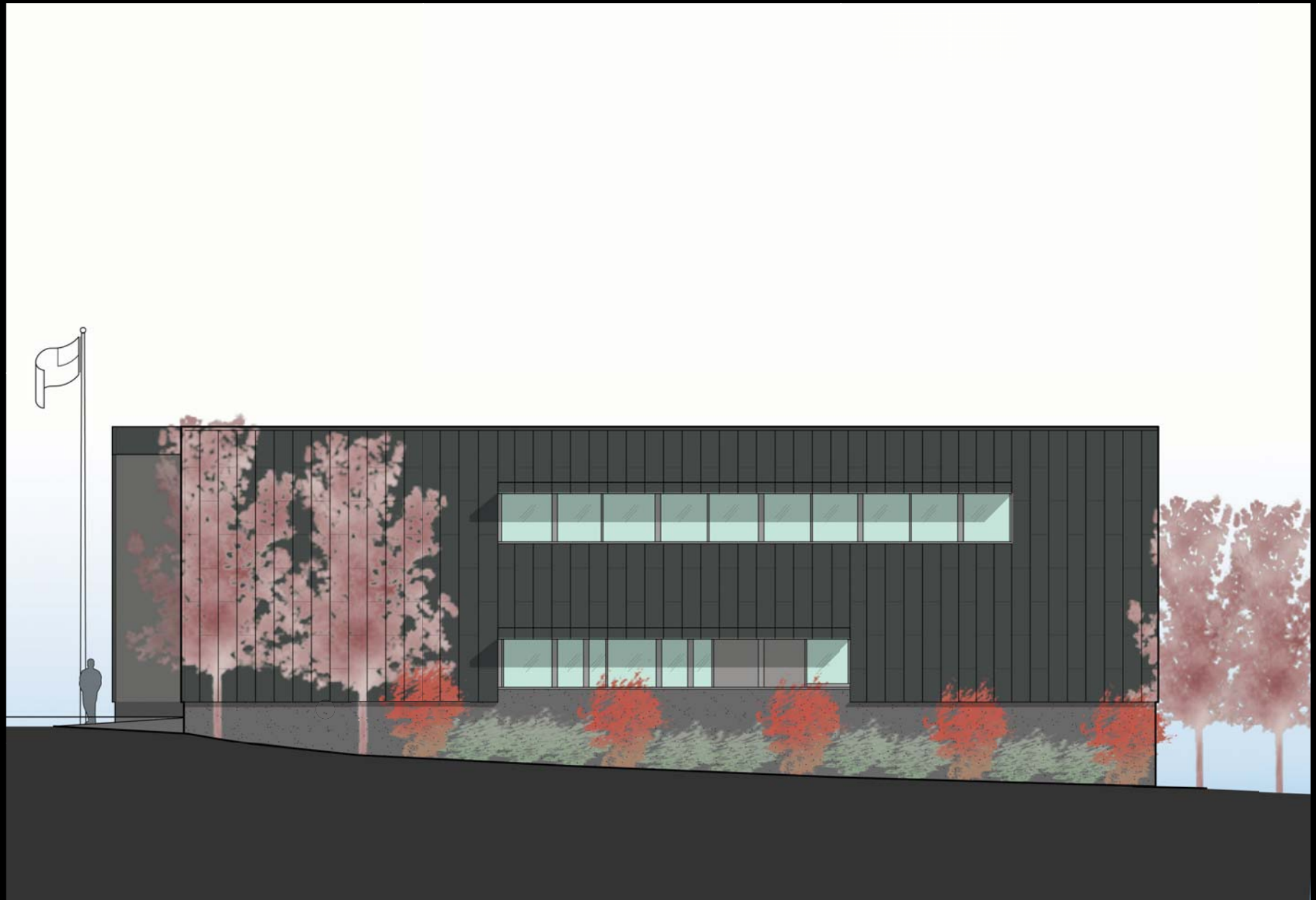
north elevation



south elevation



east elevation



west elevation



materials and signage

fire station no.30
 city of seattle fleets & facilities
 schacht | aslani architects



perspective looking south

fire station no.30
city of seattle fleets & facilities
schacht | aslani architects



perspective looking east

fire station no.30
city of seattle fleets & facilities
schacht | aslani architects



future development

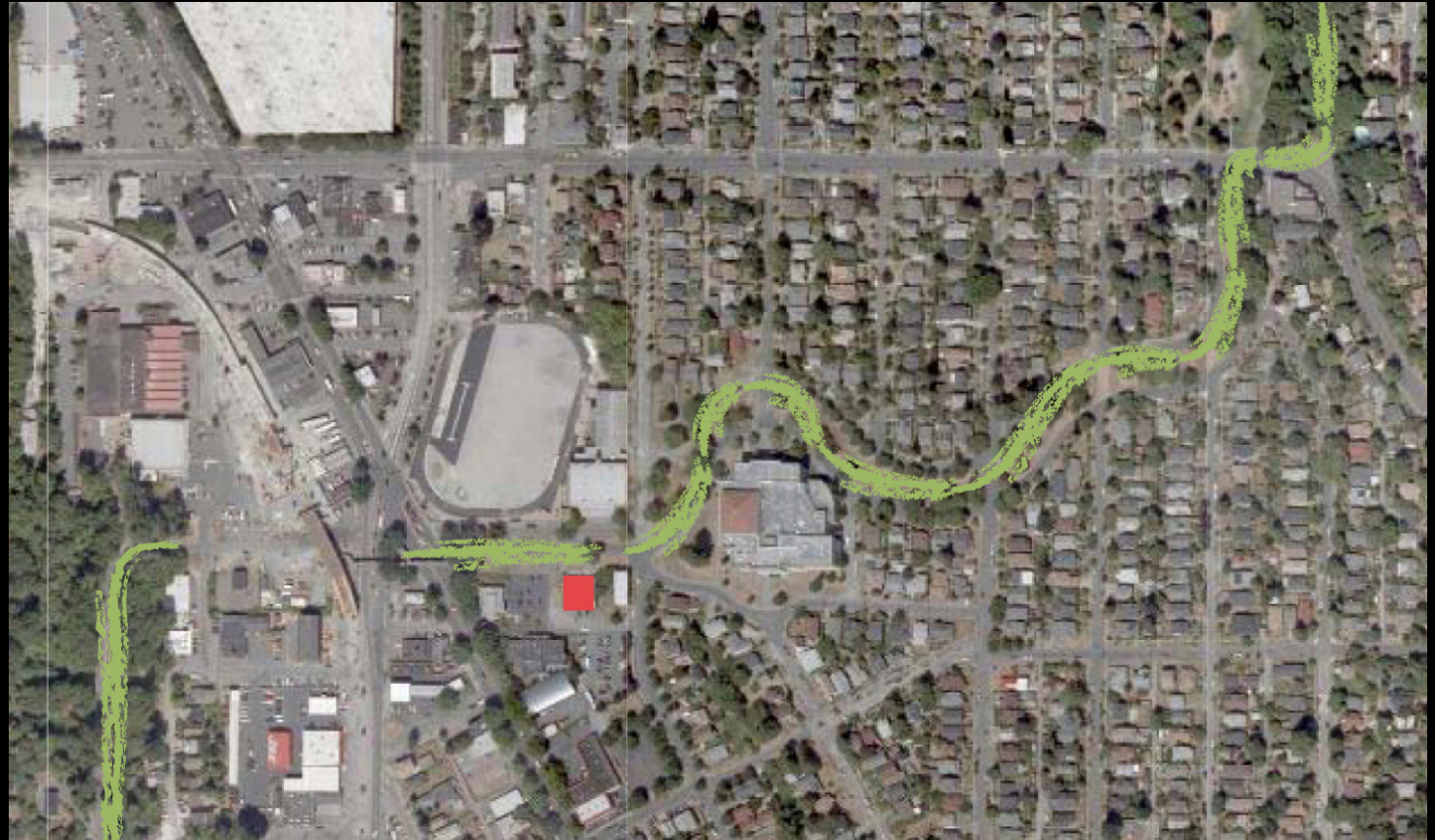
fire station no.30
city of seattle fleets & facilities
schacht | aslani architects



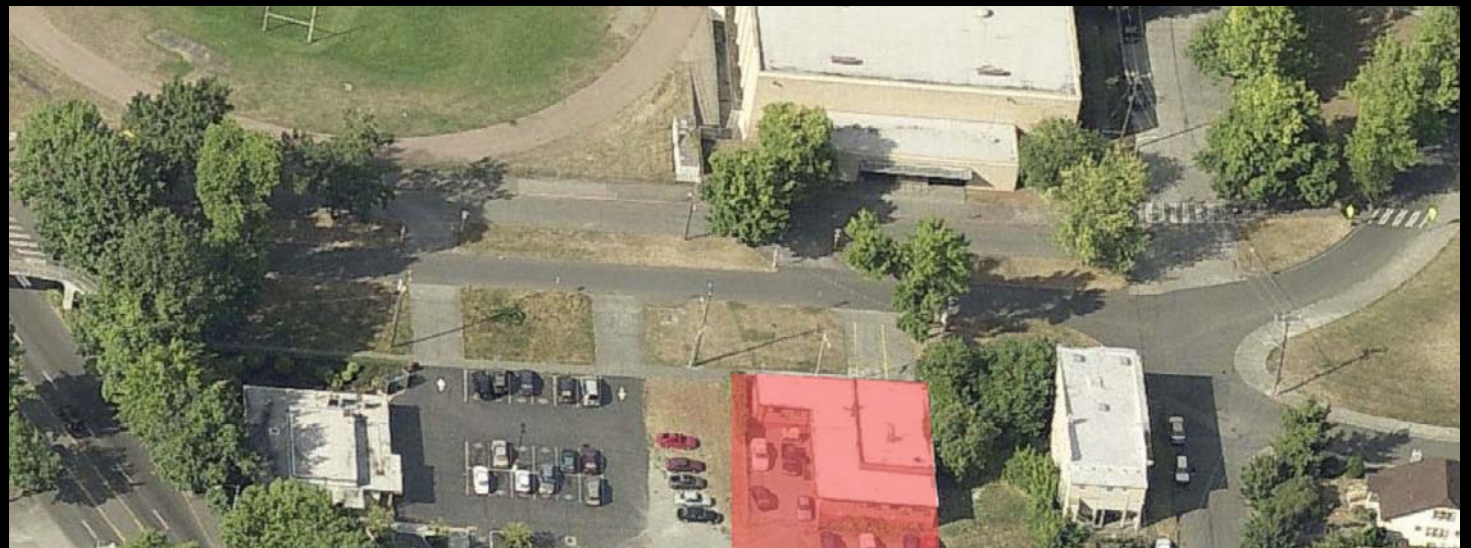
landscape & art

fire station no.30
city of seattle fleets & facilities
schacht | aslani architects

S Mount Baker Blvd
and
Cheasty Boulevard S



Mount Baker Boulevard
at Fire station # 30



Landscape plan



Plant material





Susan Zoccola

fire station no.30
city of seattle fleets & facilities
schacht | aslani architects