



DELRIDGE SKATEPARK

DELRIDGE PARK – CITY OF SEATTLE



DESIGN REVIEW COMMISSION
MAY 21, 2009



SURROUNDING 9 SQUARE BLOCK
AREA FOR DELRIDGE PARK

SYMBOL LEGEND



DELRIDGE PARK SITE



**SURROUNDING 9 SQUARE BLOCK
AREA FOR DELRIDGE PARK**

SYMBOL LEGEND



DELRIDGE PARK SITE



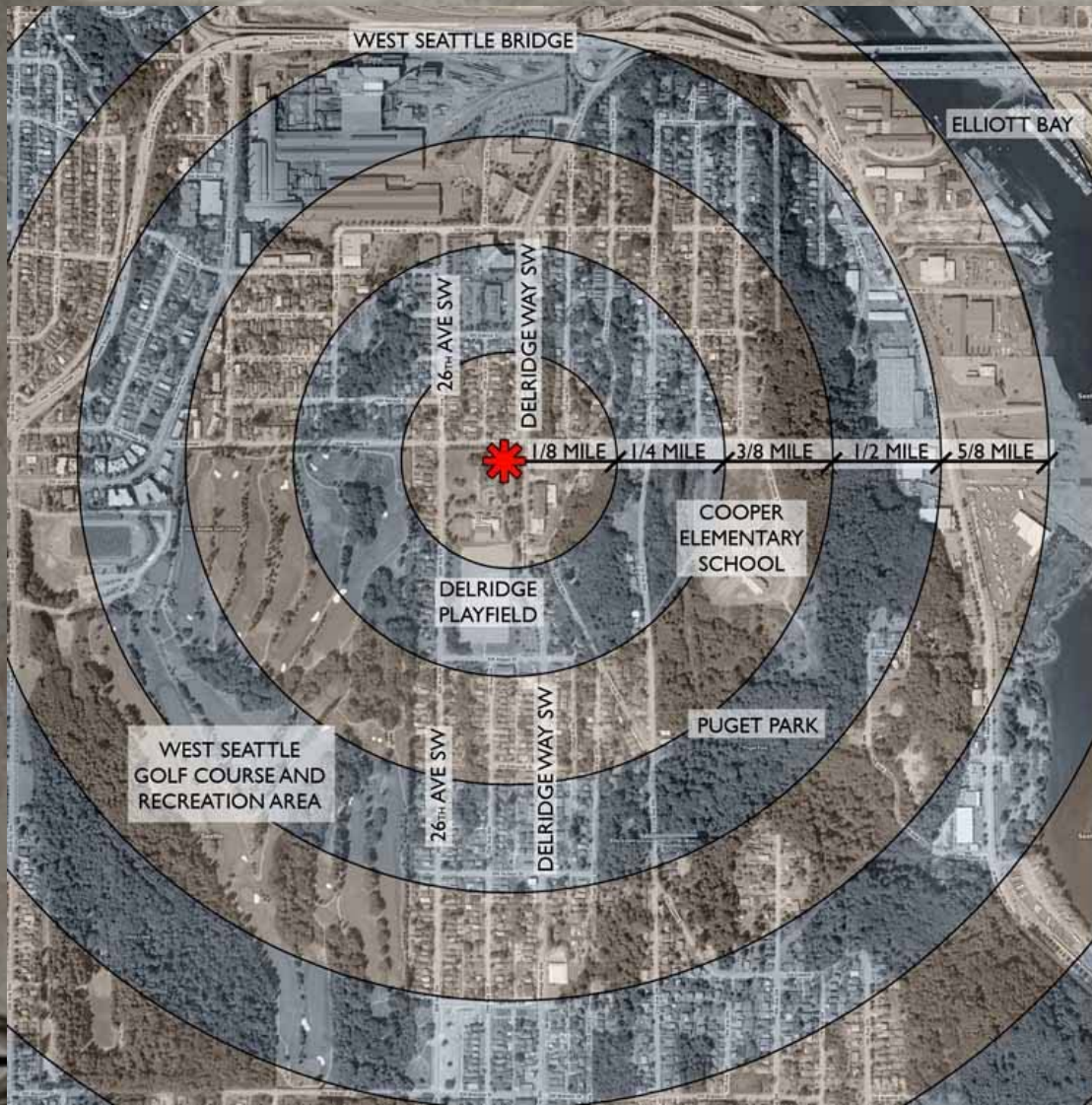
SINGLE/MULTI-FAMILY RESIDENTIAL



RECREATION/PARK/OPENSOURCE



COMMERCIAL/INDUSTRIAL/INSTITUTIONAL



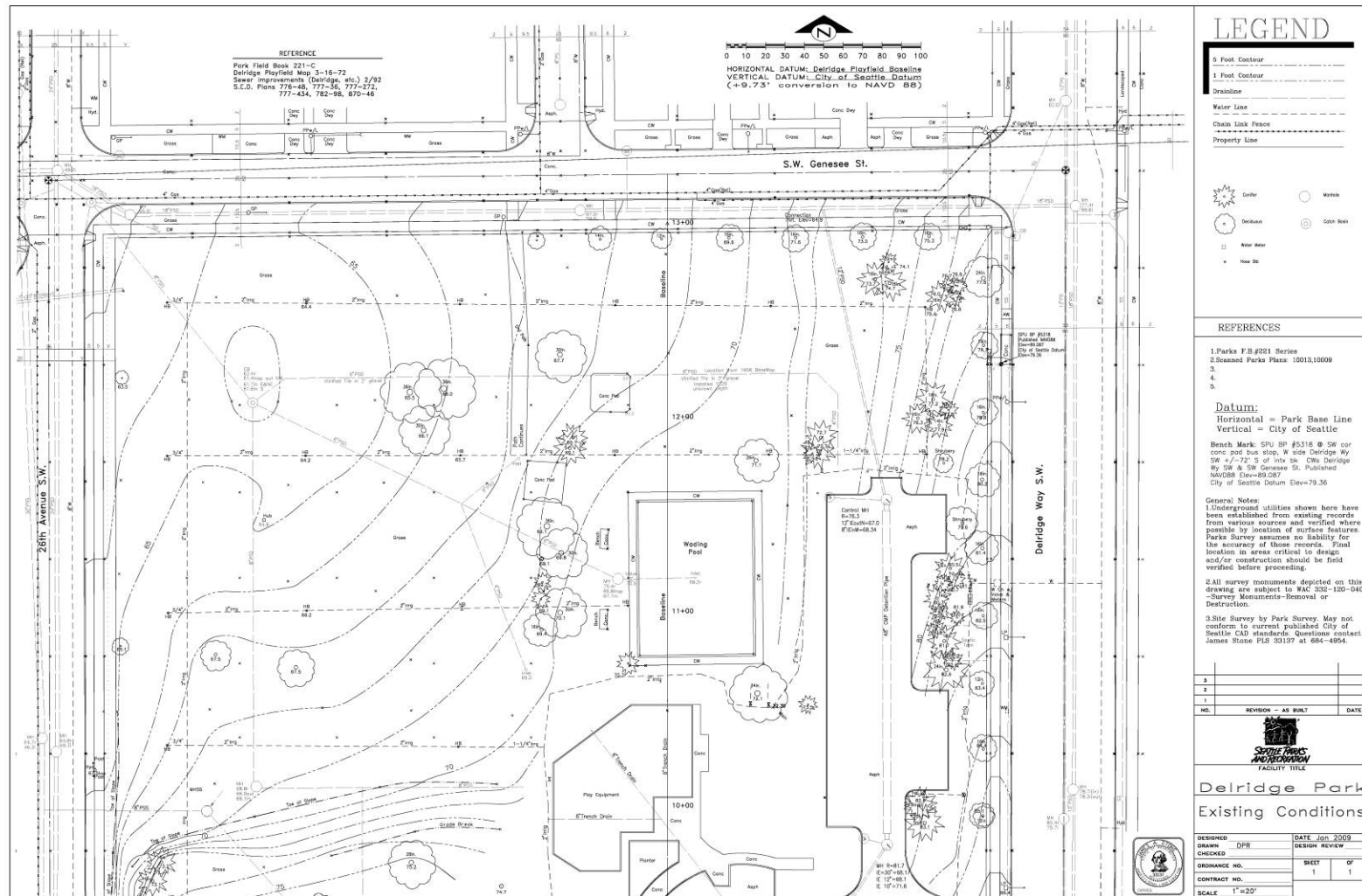
SURROUNDING 9 SQUARE BLOCK
AREA FOR DELRIDGE PARK

SYMBOL LEGEND

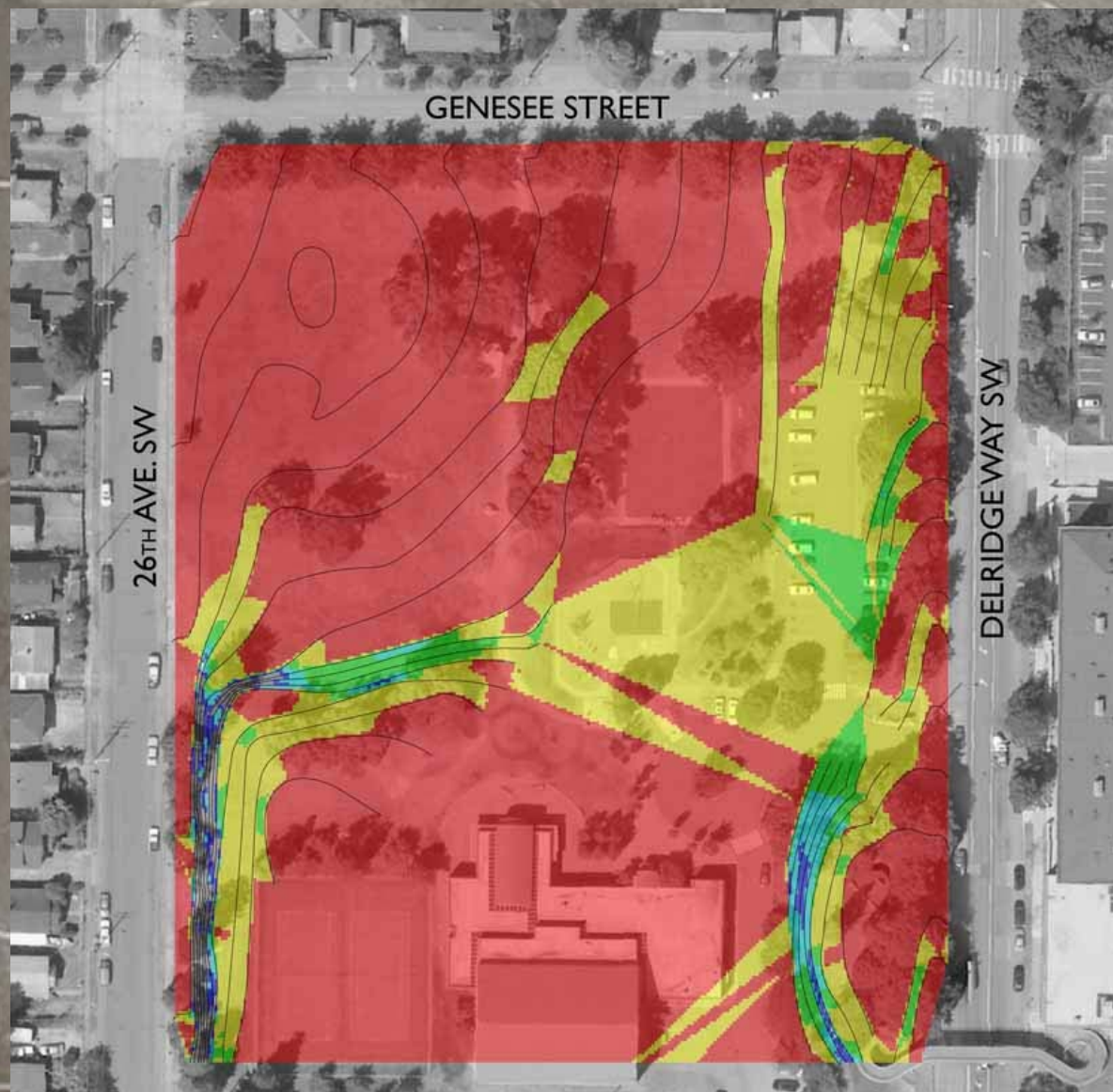


DELRIDGE PARK SITE

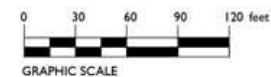
**CONCENTRIC RINGS ARE 1/8 MILE APART



Existing Site Survey



SLOPE ANALYSIS

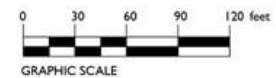




ELEVATION ANALYSIS:



LP - LOW POINT





Available Sites



SYMBOL LEGEND



PRIMARY ENTRANCES



BUS STOP



VEHICULAR CIRCULATION



PEDESTRIAN CIRCULATION - CITY SIDEWALKS



PEDESTRIAN CIRCULATION - DELRIDGE PARK



PARKING LOT CIRCULATION - DELRIDGE PARK



CROSSWALKS





SITE ALTERNATIVE I





SITE ALTERNATIVE I

SYMBOL LEGEND



PRIMARY ENTRANCES



BUS STOP



VEHICULAR CIRCULATION



PEDESTRIAN CIRCULATION - CITY SIDEWALKS



PEDESTRIAN CIRCULATION - DELRIDGE PARK



PARKING LOT CIRCULATION - DELRIDGE PARK



CROSSWALKS





SITE ALTERNATIVE 2





SITE ALTERNATIVE 2

SYMBOL LEGEND



PRIMARY ENTRANCES



BUS STOP



VEHICULAR CIRCULATION



PEDESTRIAN CIRCULATION - CITY SIDEWALKS



PEDESTRIAN CIRCULATION - DELRIDGE PARK



PARKING LOT CIRCULATION - DELRIDGE PARK



CROSSWALKS





SITE ALTERNATIVE 3





SITE ALTERNATIVE 3

SYMBOL LEGEND



PRIMARY ENTRANCES



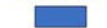
BUS STOP



VEHICULAR CIRCULATION



PEDESTRIAN CIRCULATION - CITY SIDEWALKS



PEDESTRIAN CIRCULATION - DELRIDGE PARK



PARKING LOT CIRCULATION - DELRIDGE PARK

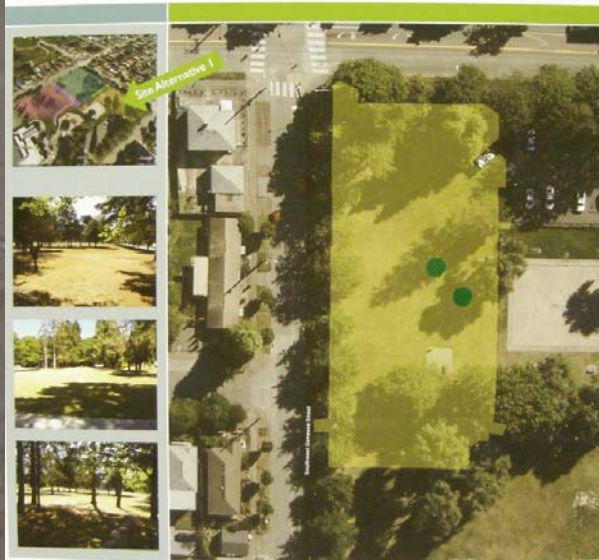


CROSSWALKS



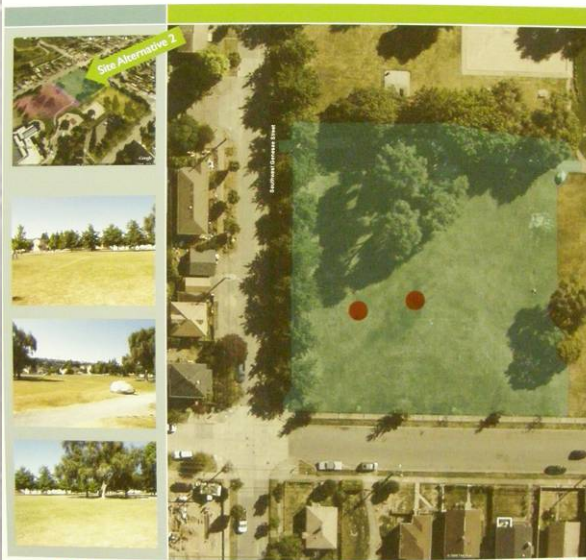


Delridge Skatepark Site Selection



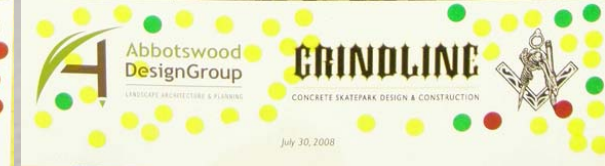
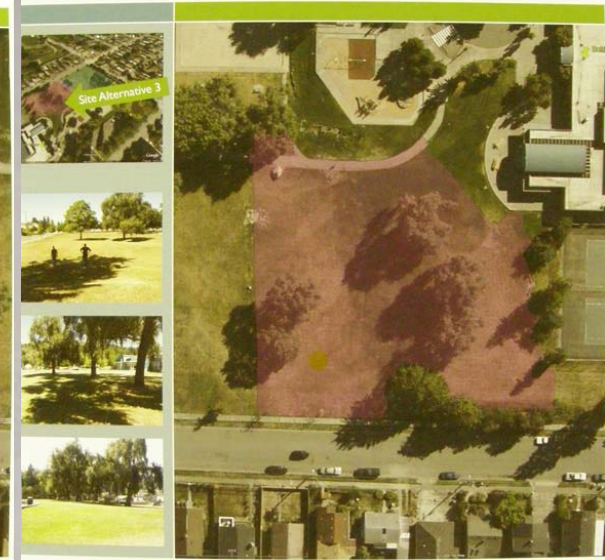
Site 1

Delridge Skatepark Site Selection



Site 2

Delridge Skatepark Site Selection



Site 3

Public Site Selection Process



Delridge Skatepark Site Selection



Preferred Site – Site 1





Bird's Eye View from North



Bird's Eye View from East



Bird's Eye View from South



Bird's Eye View from West



SITE ALTERNATIVE I





SITE ALTERNATIVE I

SYMBOL LEGEND



PRIMARY ENTRANCES



BUS STOP



VEHICULAR CIRCULATION



PEDESTRIAN CIRCULATION - CITY SIDEWALKS



PEDESTRIAN CIRCULATION - DELRIDGE PARK



PARKING LOT CIRCULATION - DELRIDGE PARK

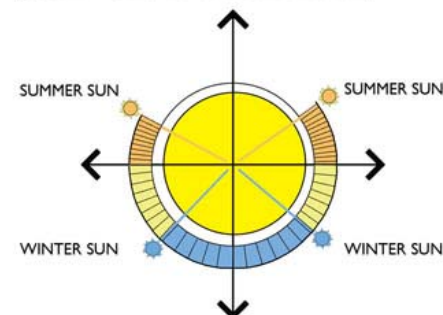


CROSSWALKS



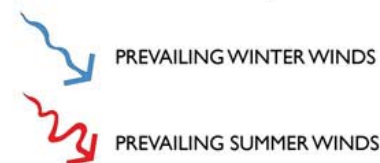


SUN - SHADE DIAGRAM

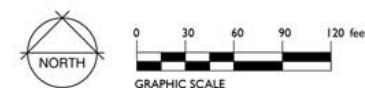


**Sun Angle Diagram Based on a Boeing
Field Airport Latitude and Longitude of:
47° 32' N 122° 18' W

SYMBOL LEGEND



**Prevailing Wind Data based on Western
Regional Climate Center - Desert Research
Institute - (Reno, Nevada). Prevailing wind
data based on hourly data for a 10 year
period and defined as the wind direction
with the highest frequency at Seattle -
Boeing Field Airport for the months of July
(Summer) and December (Winter).





PARK DISTANCES FROM EXISTING SITE ELEMENTS

SYMBOL LEGEND



CENTER OF PROPOSED SKATEPARK





Delridge Way – Looking West



Delridge Way – Looking West



Delridge Way – Looking West – Off-site Viewshed



GRINDLINE
CONCRETE SKATEPARK DESIGN & CONSTRUCTION



Corner of Delridge Way & Genesee St – Looking West



Corner of Delridge Way & Genesee St – Looking
West – Off-site Viewshed



Genesee Street – Looking South



Genesee Street – Looking South – Off-site Viewshed



Inside Park @ Genesee Street – Looking South





Genesee Street – Looking South





Genesee Street – Looking South – Off-site Viewshed



Inside Park – Looking East to Delridge Way



Inside Park – Looking East to Delridge Way





Inside Park – Looking East to Delridge Way – On-site Viewshed



Inside Park @ Splash Deck – Looking North





Inside Park @ Splash Deck – Looking North – On-site Viewshed



Inside Park – Looking North to Genesee St.



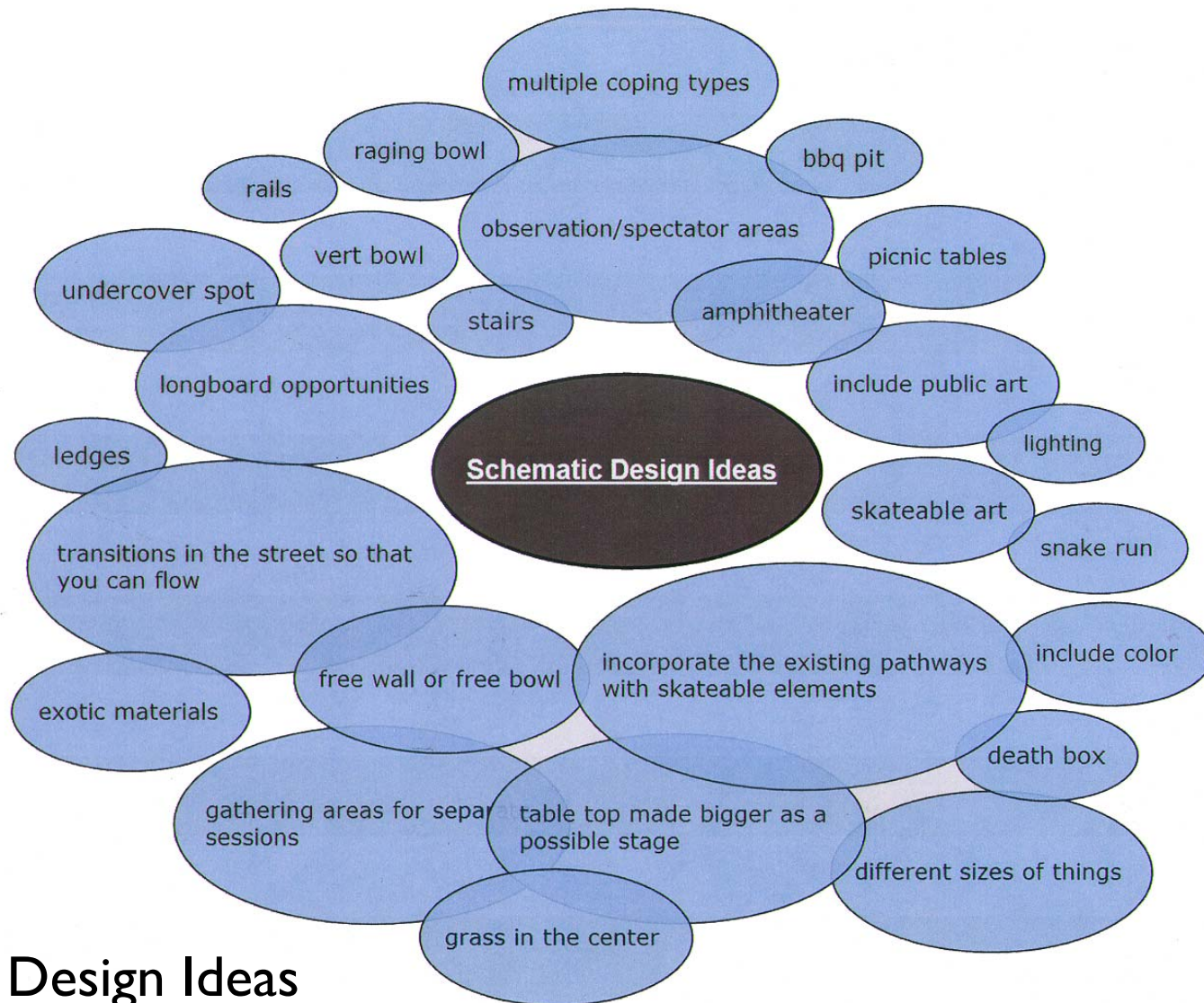


Inside Park – Looking Northwest



Inside Park – Looking West





Design Ideas

DELRIDGE SKATEPARK SCHEMATIC DESIGN OBJECTIVES

✓Produce a Unique One of a Kind High Quality Design

Abbotswood & Grindline completely understand both skateboarding and skatepark design ... We are an experienced professional team that has successfully completed over a hundred of the best skateparks in the country. No preconceived ideas or "Cookie Cutter" designs from us...We'll make it happen!

✓Provide an Interactive Design Process Allow for an opportunity for all project stakeholders to actively participate in the design process. Skaters, parents, city staff, neighbors, young, old...there are no bad ideas. The more participation the better. We are designing "YOUR" skatepark!

✓Adequately Sized Size the skatepark appropriately. How large of a geographic area will the skatepark serve? Neighborhood, regional, destination park or skate spot? How much is budgeted for construction? How far will the funds go? How many can skate at any given time?

✓Locate the Skatepark in a Highly Visible Area Don't isolate it from other people and other uses, best if there's pedestrian traffic along the skatepark, near a corner location and within plain view. Your skatepark is something to be proud of. Don't hide it! Skateparks are both supported by and contributors to the vibrancy of their location.

✓Take Advantage of Sun and Shade Understand seasonal sun angles and provide opportunities to skate and rest in both.

✓Include Public Art If possible try to include unique one of a kind public art features in the skatepark. These can even "skate able" elements. Art creates a unique sense of place and helps define the community. Murals, benches, bike racks, trash cans....anything is fair game!

✓Expansion Potential Provide reasonable solutions for potential expansion of the skatepark. Who knows what tomorrow will bring? Careful design NOW can save \$\$\$ in the future.

☒ **Integrate the Skatepark Seamlessly Into The Selected Site**

Create a "park" atmosphere with landscaping that balances the skatable surfaces and pavement, keep dirt, mulch, bark, gravel, etc. contained / isolated and away from skate surfaces in order to reduce maintenance and increase safety, use care in species selection and placement of trees to reduce litter and prevent surface rooting.

☒ **Provide Spectator Gallery / Galleries** Provide accommodations for passive enjoyment of the skatepark.

☒ **Provide Community Gathering Potential** Provide accommodations for skatejams and competitions.

☒ **Balance of Uses** Provide a balances of uses and features (vert + street). 50/50? 60/40? How much of each will your park have?

☒ **Provide for All Skill Levels** Design the park in a way that allows beginners to safely learn without getting run over by more experienced skaters while providing through challenging expert areas and everything in between.

☒ **Provide the Ability to Attract and Retain Users** Carefully design the skatepark so that it has unique elements and combinations of elements that must be practiced to master. Build in opportunities to naturally progress through the park over the years. Don't design it so that it becomes stagnant a month after it opens.

☒ **Provide the Ability to Attract Multi-age Users** Design the skatepark so that there is the potential for safe interaction between users and non-users of all ages that promotes community pride and self-policing.

☒ **Make it Accessible to All Users** Place the skatepark within reasonable close distance to sidewalks, trails other park amenities, and public transportation opportunities.



☒ **Provide Site Amenities** If economically feasible provide amenities that extend use, minimize maintenance and improve safety and appearance of the skatepark i.e. Lights, Power, Water, Garbage Cans, Bike Racks and Restrooms, Drinking Fountain and Hose Connection.

☒ **Provide Season Extenders** If economically feasible provide roof or canopy cover: these can be permanent or seasonal structures that allow full or partial weather protection to extend usability by keeping areas dry/shaded. Radiant heating in concrete is sometimes used in harsh winter climates to dry skate surfaces after precipitation and to prevent condensation on skate surfaces.

☒ **No Fence** Unless required by local code or insurance requirements try not to fence in the skatepark. Provide protection for pedestrians and spectators from the action where necessary, but don't enclose / cage the skatepark.



DELRIERGE SKATEPARK SCHEMATIC DESIGN

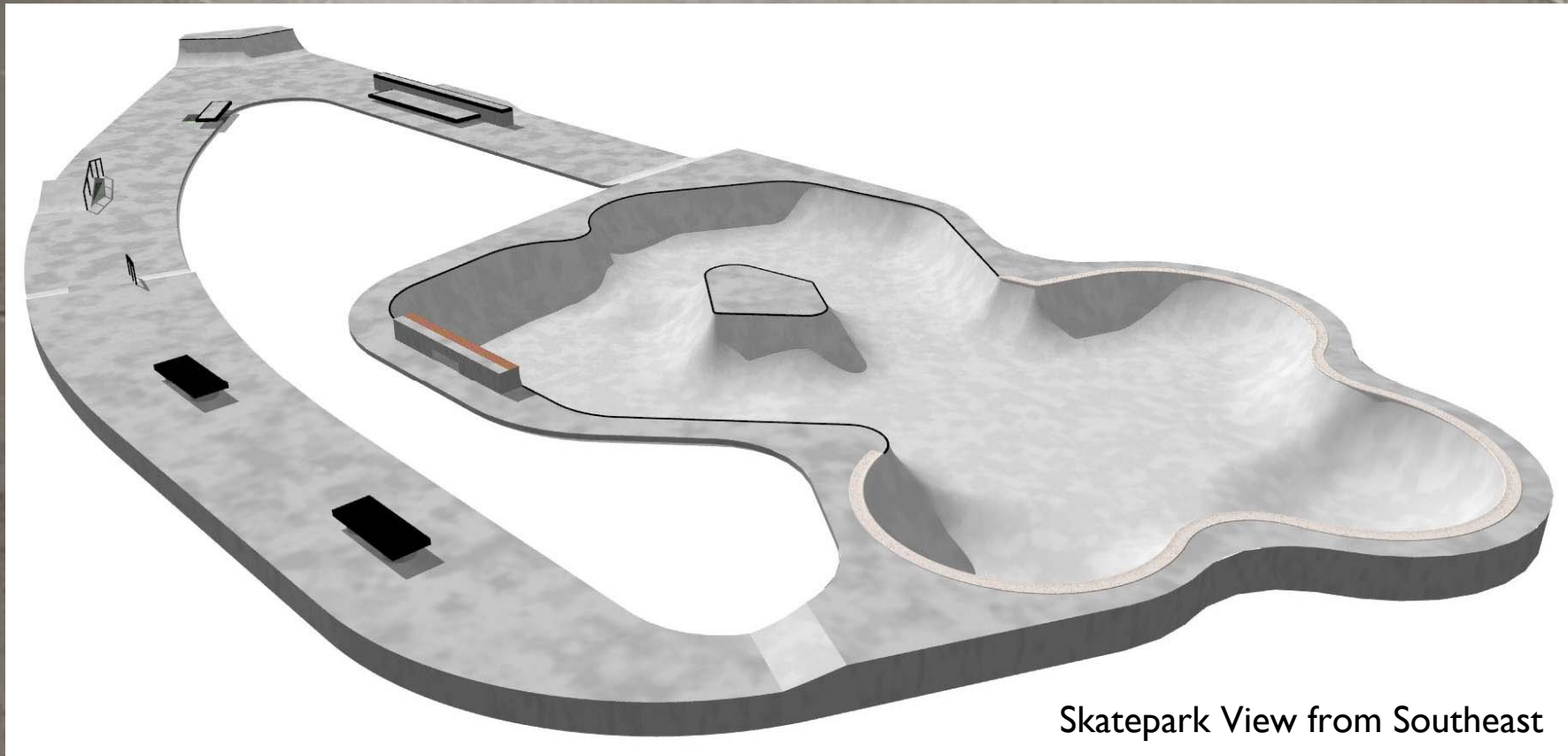
DELRIERGE PARK - CITY OF SEATTLE



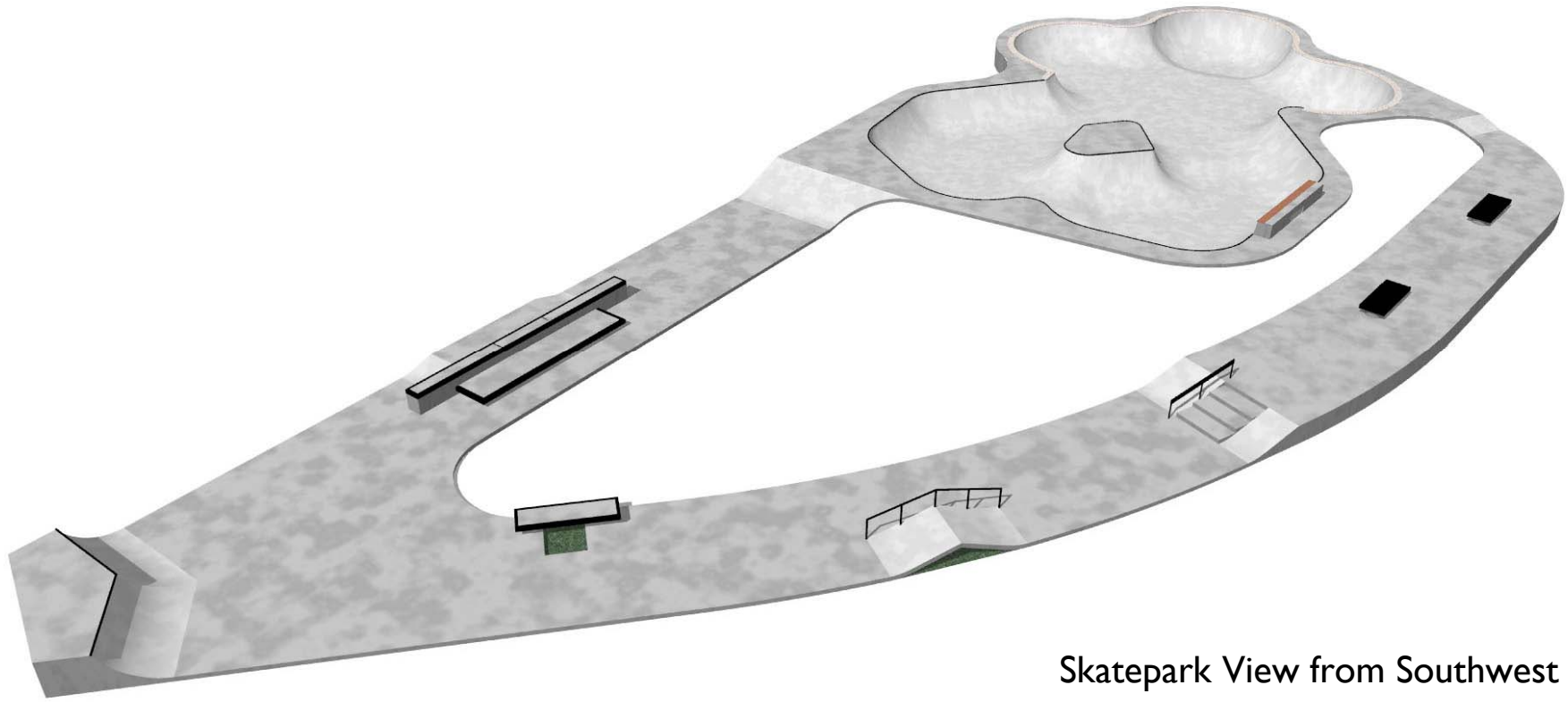
Skatepark View from East



GRINDLINE
CONCRETE SKATEPARK DESIGN & CONSTRUCTION



Skatepark View from Southeast



Skatepark View from Southwest



Skatepark View from North



Houston Skatepark



Yakima Skatepark



Yakima Skatepark

Central Turf and Planting Area Precedents



DELRIIDGE SKATEPARK

SCHEMATIC DESIGN VIEW LOOKING FROM EAST TO WEST



Attention
Gabriel Park Skatepark Users
Open Hours: Dawn to Dusk
www.northwestskater.com

General Skatepark Rules

- BMX bike metal stunt pegs are not allowed anywhere in Gabriel Park Skatepark. Plastic stunt pegs may be used.
- Please be respectful of the neighbors. Keep noise levels down so they can't hear you from their homes.
- Abusive, threatening or obscene language is prohibited.
- Litter, graffiti, and tagging are prohibited. It costs money to address these issues—money that could help fund future skateparks like this.
- Alcohol, tobacco, and drugs are prohibited.
- Please respect the hard work that skateboarders, BMX riders, and others have done to make this skatepark possible. Be respectful of others, maintain control, and use this park in a safe manner.
- If you see someone acting inappropriately, be a mentor and share tips on skatepark etiquette.
- Thank you for complying with these rules. Any person violating city ordinances or state laws may be arrested, cited, and/or excluded from this facility. *Portland City Code 20.12.265*

In case of emergency: Police/Fire/Medical: Dial 9-1-1
Police non-emergency: 503-823-3333 Skatepark Address: SW 45th & Nevada St.

PORTLAND PARKS & RECREATION
Healthy Parks, Healthy Portland

WARNING
Skateboarding, skating, and biking can be hazardous recreational activities and can cause serious injury. All surfaces of this park are extremely dangerous when wet. Gabriel Park Skatepark is unsupervised. Any use of the skatepark is at your own risk.

Oregon law requires youth 15 years of age and younger to wear safety helmets when riding skateboards, in-line skates, and bicycles in public places. Portland Police officers will be issuing tickets with fines for non-compliance with this law.

Helmets are highly recommended for all users. Other protective equipment such as wrist guards, elbow pads, and knee pads is also strongly recommended.

Be safe so you can come back and enjoy this park again.

Helmet law - ORS 814.600 and 814.485

www.PortlandParks.org
503-823-PLAY
Commissioner Dan Johnson
Director Joel Sumner

LOWER WOODLAND PARK
5201 Green Lake Way North
Skate Park Rules and Regulations

Welcome to Lower Woodland Skate park. Because it is unsupervised, please note these rules that are for your safety. You skate at your own risk. people who use the skatepark, and parents and guardians of children who use it, need to know that skating, skateboarding, and rollerblading can be hazardous activities and can result in serious injury to the skater in the form of broken bones, paralysis, brain damage or even death.

Under Washington State Law, the City of Seattle assumes no responsibility and incurs no liability for any personal injury, loss, or damage resulting from using the Skate Park.

We **STRONGLY** recommend you use helmets, kneepads, elbow pads, and wrist guards. The Skate Park features area with different levels of difficulty which range from novice to experienced skaters.

KNOW YOUR ABILITIES AND STAY WITHIN THEM! Be prepared for greater risk before you try a more difficult area within the Skate Park. These rules are meant to protect you and keep the Skate Park clean and safe.

SKATE PARK RULES

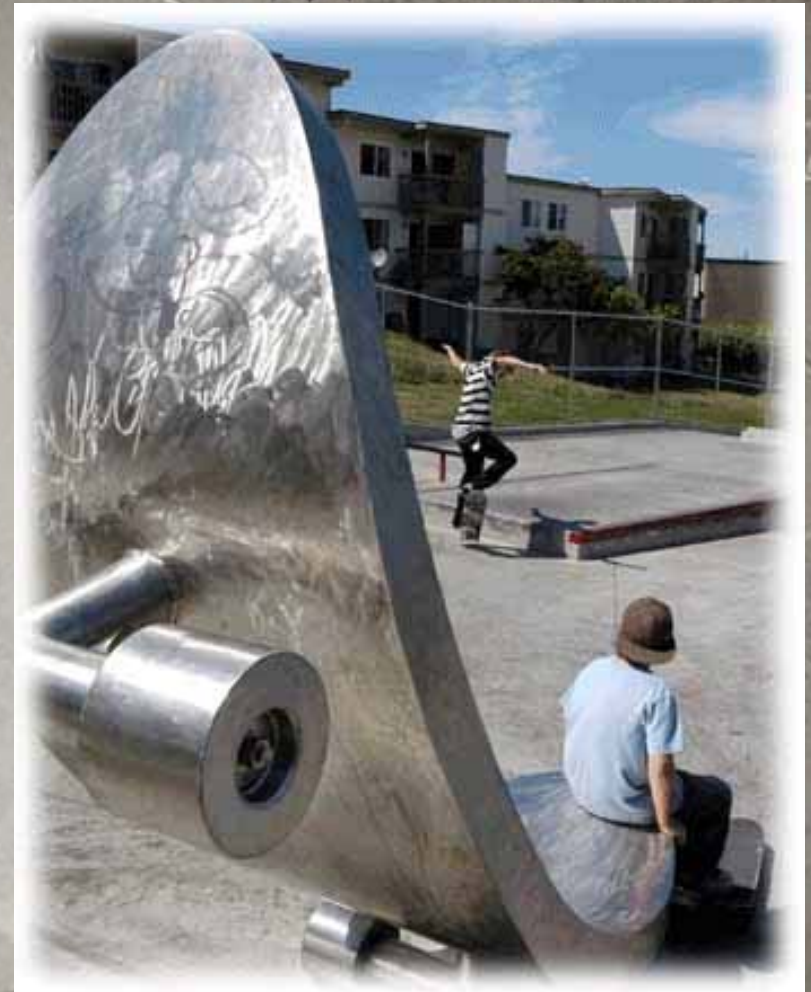
1. These are not allowed inside the skate park:
 - Bicycles or BMX bikes
 - Any vehicle with a motor
 - Animals
 - Food and drinks
 - Alcohol, tobacco products, or drugs.
 - Glass containers
2. Only skateboards, inline skates, and roller skates are allowed in the Skate Park.
3. Keep the park clean! Use the trash containers and don't litter.
4. Show respect for your fellow skaters and spectators.
5. Vulgar, threatening, and abusive language is not allowed.
6. Amplified sound is not allowed.
7. Reckless or dangerous skating is prohibited - don't intentionally charge or collide with other skaters.
8. If the Skate Park is wet or covered with snow, or if there is debris, litter or other obstacles on the surface, it is not to be used.
9. Skating in the public plaza is not allowed.
10. HAVE FUN!

Parents and guardians are responsible for their children's safety and for insuring that their children comply with Park rules.

PARK HOURS 4 A.M. TO 11:30 P.M.
General Parks Information Phone 684-4075
CALL 911 to report illegal activity
SMC 18.12



Skatepark Safety Signage Precedents



Skatepark Public Art Precedent - Everett Skatepark
'Giant Metal Skateable Board Sculpture'



Tag	Item	Unit	Cost/Unit	Quantity	Total
200	Equipment Rental				
201	Fuel	ls	\$2.75	900	\$2,475.00
200	Equipment Rental	ls	\$25,900.00	1	\$25,900.00
	200 Total				\$28,375.00
300	Construction Materials				
301	Concrete				
	Skatepark Concrete	yd	\$108.00	350	\$37,800.00
	Color/Stamping	ls	\$0.00	0	\$0.00
	Subtotal				\$37,800.00
302	Gravel/Fill/Import/Export				
	Construction Entrance	ls	\$1,000.00	1	\$1,000.00
	Clear/Grub		\$15.00	325	\$4,875.00
	Structural Fill	tn	\$12.50	200	\$2,500.00
	Aggregate	tn	\$17.00	275	\$4,675.00
	Drain Rock	tn	\$25.00	25	\$625.00
	Subtotal				\$8,175.00
303	Steel Coping				
	Rolled Steel Coping/Tubing/Rails	ls	\$5,500.00	1	\$5,500.00
	Subtotal				\$5,500.00
304	Rebar				
	Skatepark - #3 Rebar	stick	\$4.00	1463	\$5,852.00
	Skatepark - #4 Rebar	stick	\$7.00	75	\$525.00
	Subtotal				\$6,377.00
305	Lumber/Misc				
	Erosion Control	ls	\$1,000.00	1	\$1,000.00
	Lumber	ls	\$11,500.00	1	\$11,500.00
	Subtotal				\$12,500.00
306	Pool Coping				
	Pool Coping	ls	\$4,000.00	1	\$4,000.00
	Tile	ls	\$0.00	0	\$0.00
	Subtotal				\$4,000.00
307	Granite				
	Allowance	ls	\$0.00	0	\$0.00
	Subtotal				\$0.00
308	Drainage				
	Drains	ea	\$450.00	2	\$900.00
	4" Perf Drain	ls	\$200.00	1	\$200.00
	6" Drainline	lf	\$4.00	300	\$1,200.00
	Subtotal				\$2,300.00
	300 Total				\$76,652.00
400	Labor				
	labor	ls			\$149,600.00
	400 Total				\$149,600.00
402	Overtime Labor				
	Overtime labor	ls			\$12,870.00
	402 Total				\$12,870.00
444	Project Management				
	Project Management	hr	\$33.00	50	\$1,650.00
	Project Management	hr	\$30.00	95	\$2,850.00
	444 Total				\$4,500.00

Tag	Item	Unit	Cost/Unit	Quantity	Total
500	Landscape/Site Development				
	Clearing and Grubbing	sf	\$ 0.35	21,000	\$7,350.00
	Selected Demolition	sf	\$ 0.75	2,500	\$1,875.00
	Soil Prep/Fine Grading	sf	\$ 0.10	21,000	\$2,100.00
	Amended Topsoil @ 6" depth	cy	\$ 25.00	390	\$9,750.00
	Concrete Sidewalk	sf	\$ 5.00	3,000	\$15,000.00
	Concrete Curb	lf	\$ 8.00	50	\$400.00
	Benches	ea	\$ 1,000.00	2	\$2,000.00
	Trash Receptacle	ea	\$ 1,000.00	1	\$1,000.00
	Signage	allow	\$ 2,000.00	n/a	\$2,000.00
	3" cal Deciduous	ea	\$ 500.00	2	\$1,000.00
	2.5" cal Deciduous	ea	\$ 350.00	7	\$2,450.00
	Hydroseeding for Central Turf SP Area and				
	Disturbed Park Areas	sf	\$ 0.10	21,000	\$2,100.00
	Bark Mulch @ 2-4" depth	sf	\$ 0.35	100	\$35.00
	Berm Construction	allow	\$ 2,000.00	n/a	\$2,000.00
	Automatic System - Retrofit Old System	sf	\$ 1.00	18,000	\$18,000.00
	Automatic System - New Irrigation	sf	\$ 1.00	3,000	\$3,000.00
	500 Total				\$70,060.00
600	Design/Engineering/Testing				
	Concrete Testing	ls	\$1,500.00	1	\$1,500.00
	600 Total				\$1,500.00
700	Lodging/Utilities				
	Lodging	mnth	\$3,000.00	4	\$12,000.00
	700 Total				\$12,000.00
750	Travel				
	Travel	ls	\$4,500.00	1	\$4,500.00
	750 Total				\$4,500.00
800	Bonds & Permits				
	Performance Bond	1.5% of contract			\$5,403.73
	Additional Insurance	ls	\$0.00	0	\$0.00
	Permits	ls	\$0.00	0	\$0.00
	800 Total				\$5,403.73
	Grindline Subtotal				\$289,997.00
	Overhead				\$38,352.10
	Grindline Total COGS				\$328,349.10
	Profit	7.00%			\$20,299.79
	Contingency	4.00%			\$11,599.88
	Grindline Total				\$360,248.77
	Subcontractor Total (Cost plus 20%)				\$84,072.00
	Performance Bond	1.5% of Contract			\$5,403.73
	Grand total				\$449,724.51

Delridge Skatepark Cost Estimate