

Northwest Native Canoe Center Carving House

SDC Presentation October 2021



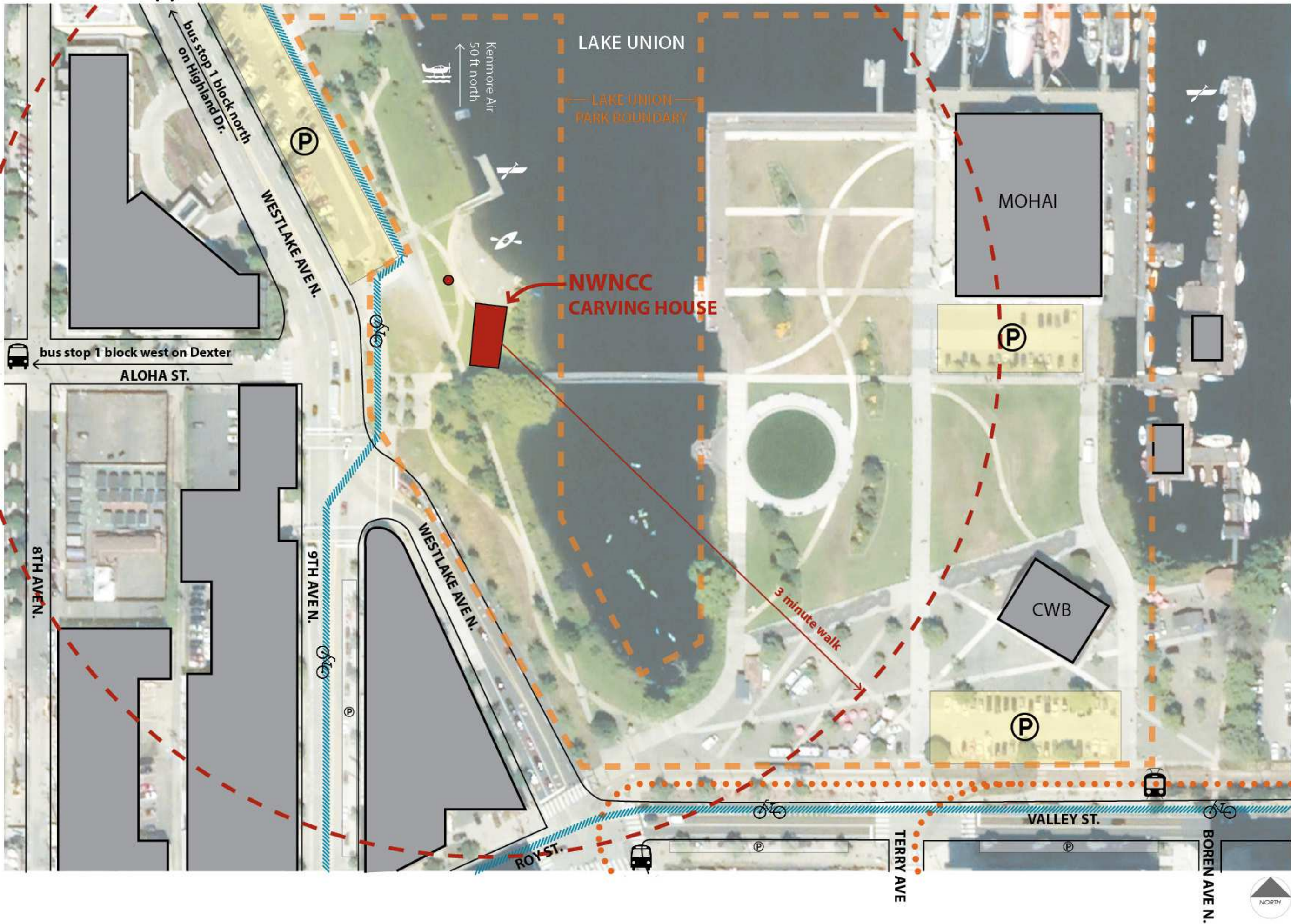
UNITED INDIANS
OF ALL TRIBES FOUNDATION



Seattle
Parks & Recreation
healthy people healthy environment strong communities

JONES JONES
ARCHITECTS
LANDSCAPE ARCHITECTS
PLANNERS





NWNCC
CARVING HOUSE

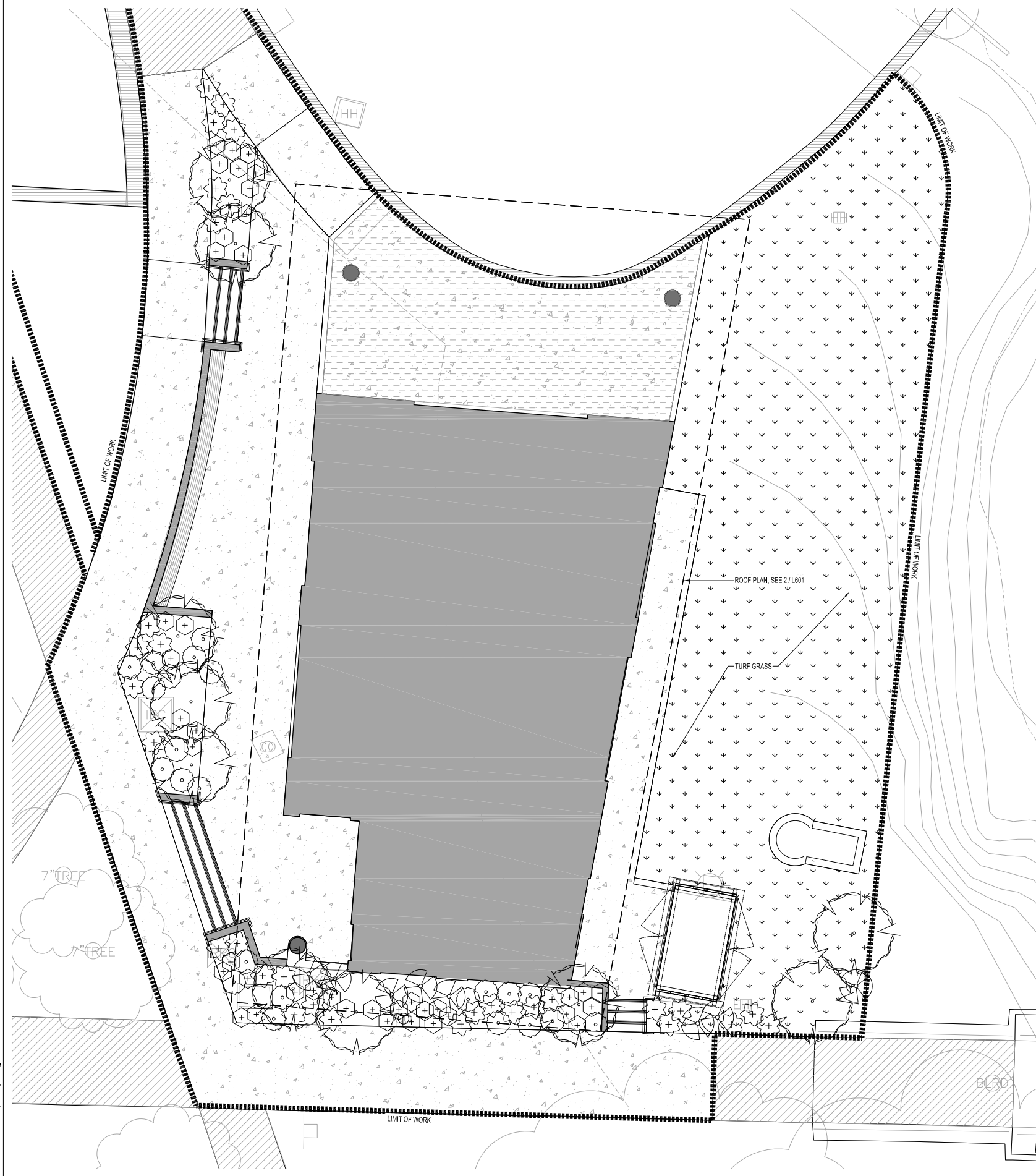


UNITED INDIANS
OF ALL TRIBES FOUNDATION

Seattle
Parks & Recreation

JONES | JONES
ARCHITECTS
LANDSCAPE ARCHITECTS
PLANNERS



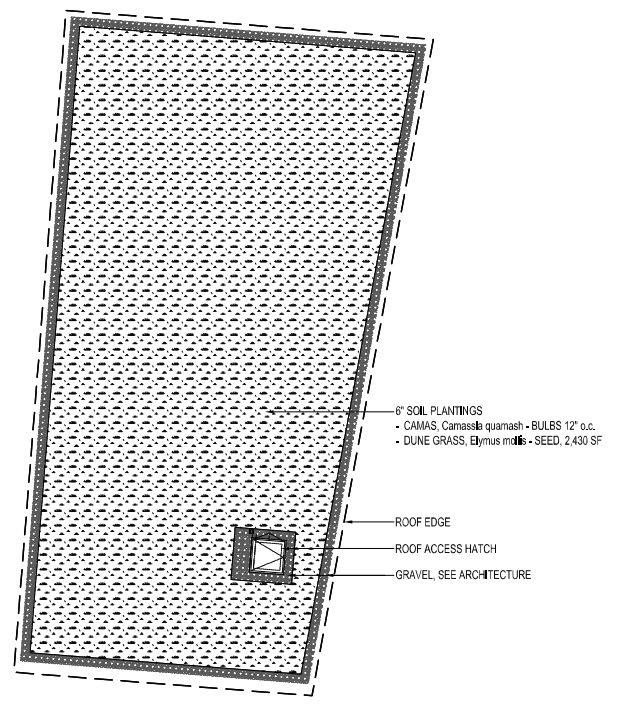


1 SITE PLANTING PLAN
SCALE: 1/4" = 1'-0"

LEGEND & SCHEDULE

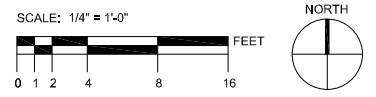
SYMBOL	COMMON NAME	BOTANICAL NAME	QUANTITY
	SALAL	Gaultheria shallon	41
	LADY FERN	Athyrium filix-femina	23
	SWORD FERN	Polystichum munifolium	31
	EVERGREEN HUCKLEBERRY	Vaccinium ovatum	8
	VINE MAPLE, MULTI STEM	Acer diacanthum	10
	TURF GRASS (1,600 SF) -25% Hard Fescue -25% Sheep Fescue -25% Chewings Fescue -25% Creeping Fescue	Fine fescue blend	8lbs / 1000 sf

2 SITE PLANTING SCHEDULE
SCALE: NTS



3 ROOF PLANTING PLAN
SCALE: 1/8" = 1'-0"

GENERAL NOTES:
1. PLANTING BED ESTABLISHMENT: LOOSEN SUBGRADE OF PLANTING BEDS TO A MINIMUM OF 4". SPREAD AMENDED TOPSOIL AND TILL INTO EXISTING NATIVE SOIL TO A MINIM DEPTH OF 12".
2. MULCH PLANTING BEDS WITH 4" ORGANIC COMPOST MULCH



>>>>CAUTION - CALL 811<<<<
UTILITY NOTIFICATION CENTER
BEFORE YOU DIG!
WWW.CALL811.COM

Also, verify all underground utilities not located by the 811 service by using a commercial location service and call SPR Inspection Request Line (206) 884-7034.



United Indians of
All Tribes Foundation
Seattle, WA

JONES JONES

ARCHITECTS
LANDSCAPE ARCHITECTS
PLANNERS
105 SOUTH MAIN STREET
SUITE 300
SEATTLE, WA 98144
206.624.5702
www.jonesandjones.com

JOB NO.: 20300.221

NO.	REVISION	AS BUILT	DATE
7			
6			
5			
4			
3			
2			
1			

REVIEWED: PARK ENGINEER DATE
All work done in accordance with the City of Seattle Standard Plans and Specifications in effect on the date shown above, and supplemented by Special Provisions.

CONSTRUCTION PERMIT SET



NOT FOR CONSTRUCTION

All drawings and material appearing herein are the original and unpublished work of the architect and may not be duplicated, used, or disclosed without the written consent of Jones & Jones.



NW Native Canoe Center

Carving House

PLANTING PLAN

DESIGNED Consultant Name	DATE 8/26/2021
DRAWN WVS	SHEET OF
CHECKED BCA	
ORDINANCE NO.	L601
SPECIFICATION NO.	
SCALE AS NOTED	

J:\NW Native Canoe Center Carving House\2021\08\26\2021\08\26\2021\1908 AM

>>>>CAUTION - CALL 811<<<<
 UTILITY NOTIFICATION CENTER
 BEFORE YOU DIG!
 WWW.CALL811.COM

Also, verify all underground utilities not located by the
 811 service by using a commercial location service and
 call SPR Inspection Request Line (206) 884-7034.



United Indians of
 All Tribes Foundation
 Seattle, WA

JONES & JONES

ARCHITECTS
 LANDSCAPE ARCHITECTS
 PLANNERS
 135 SOUTH MAIN STREET
 SUITE 300
 SEATTLE, WA 98104
 206.624.5702
 www.jonesandjones.com

JOB NO.: 20300.221

NO.	REVISION - AS BUILT	DATE
7		
6		
5		
4		
3		
2		
1		

REVIEWED: _____ DATE _____
 PARK ENGINEER

All work done in accordance with the City of Seattle Standard
 Plans and Specifications in effect on the date shown above, and
 supplemented by Special Provisions.

**CONSTRUCTION
 PERMIT SET**



NOT FOR CONSTRUCTION

All drawings and material appearing herein are the
 original and unpublished work of the architect and
 may not be duplicated, used, or disclosed without
 the written consent of Jones & Jones.

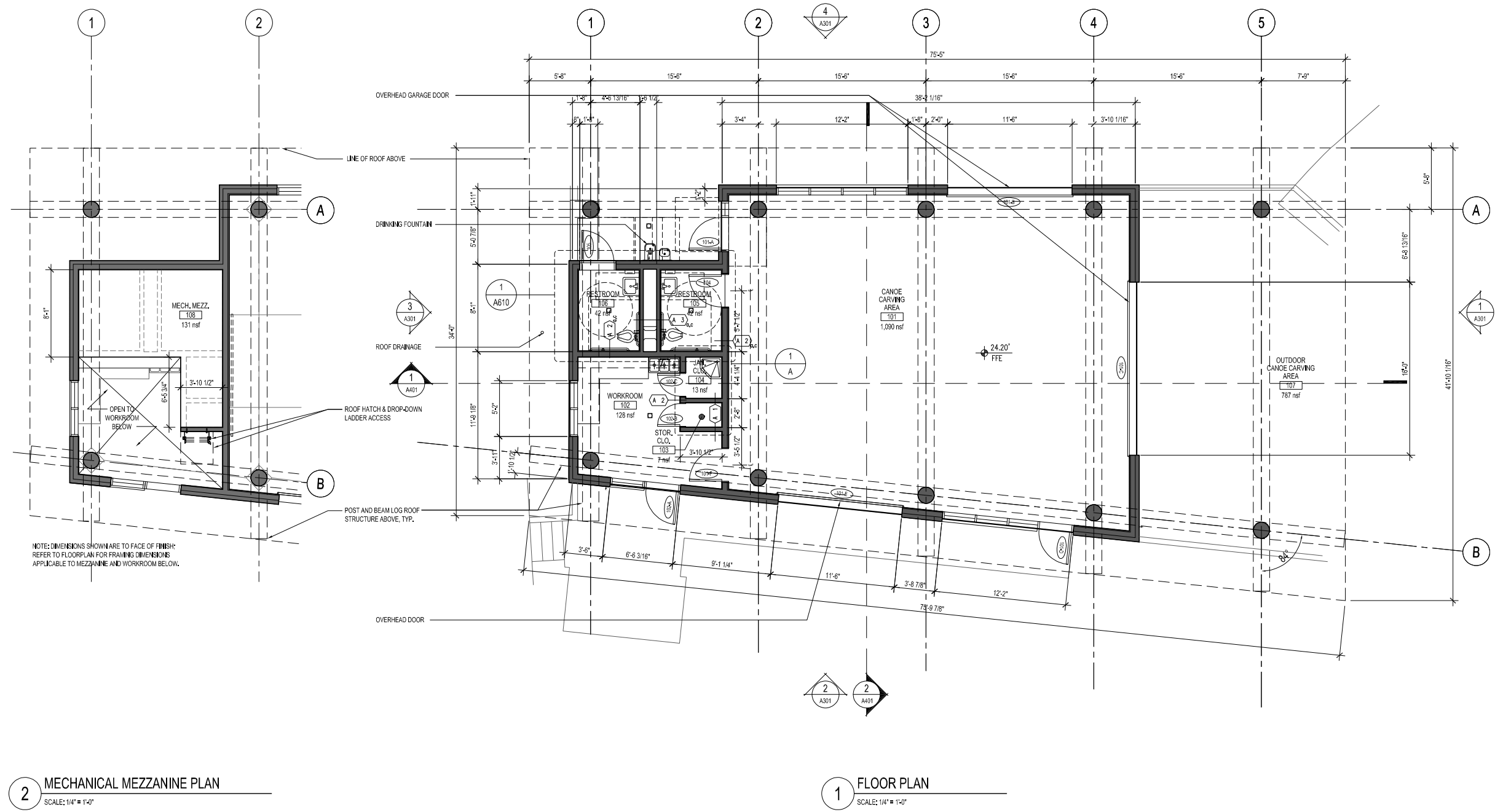


NW Native Canoe Center

Carving House

FLOOR PLAN

DESIGNED Consultant Name	DATE 8/26/2021
DRAWN	SHEET ___ OF ___
CHECKED	
ORDINANCE NO.	A201
SPECIFICATION NO.	
SCALE	



2021/08/26 10:00 AM C:\Users\jones\OneDrive\Documents\Projects\2021\NW Native Canoe Center\Carving House\DWG\DWG\2021\08\26\2021_08_26_10_00_A201.rvt

Seattle Design Commission Prior Review Comments



2. Consider how the Canoe Center will relate to the rest of the park and neighborhood. Explore how signage or other measures might support desired interactions.

- Clearly express Coast Salish identity.
- Deploy contemporary systems.
- Integrate with existing Park wayfinding & circulation program.
- Adapt operations - "desired interactions" - to pandemic realities
- Explore programming partnerships with MOHAI & Center for Wooden Boats



Option #1: Deep Soil Mixing & Jet Grouting

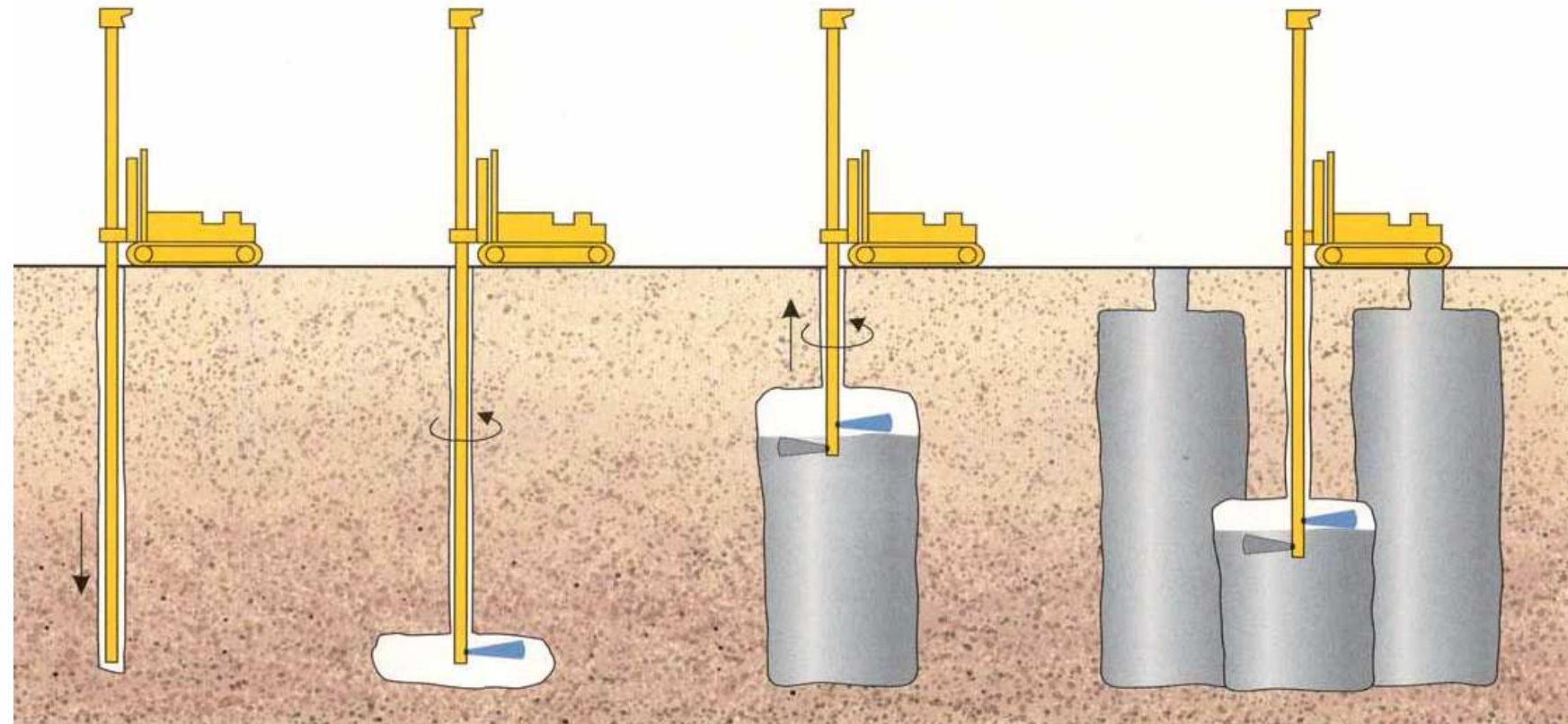
NWNCC
CARVING HOUSE



UNITED INDIANS
OF ALL TRIBES FOUNDATION

Seattle
Parks & Recreation

JONES JONES
ARCHITECTS
LANDSCAPE ARCHITECTS
PLANNERS



NW Native
Canoe Center

Carving House



United Indians of
All Tribes Foundation
Seattle, WA

JONES JONES

ARCHITECTS
& LANDSCAPE ARCHITECTS
(PLANNERS)
105 SOUTH MAIN STREET
SUITE 300
SEATTLE, WA 98104
206.424.4740
www.jonesjones.com

ARCHITECTS AND
LANDSCAPE ARCHITECTS, LTD.
105 SOUTH MAIN STREET
SUITE 300
SEATTLE, WASHINGTON
98104
TEL 206.424.4740
WWW.JONESJONES.COM

MUP
APPLICATION

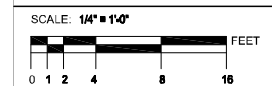
NOT FOR CONSTRUCTION

DATE: 10 FEBRUARY 2021

REVISIONS

SPACE BELOW FOR PLAN REVIEW STAMP

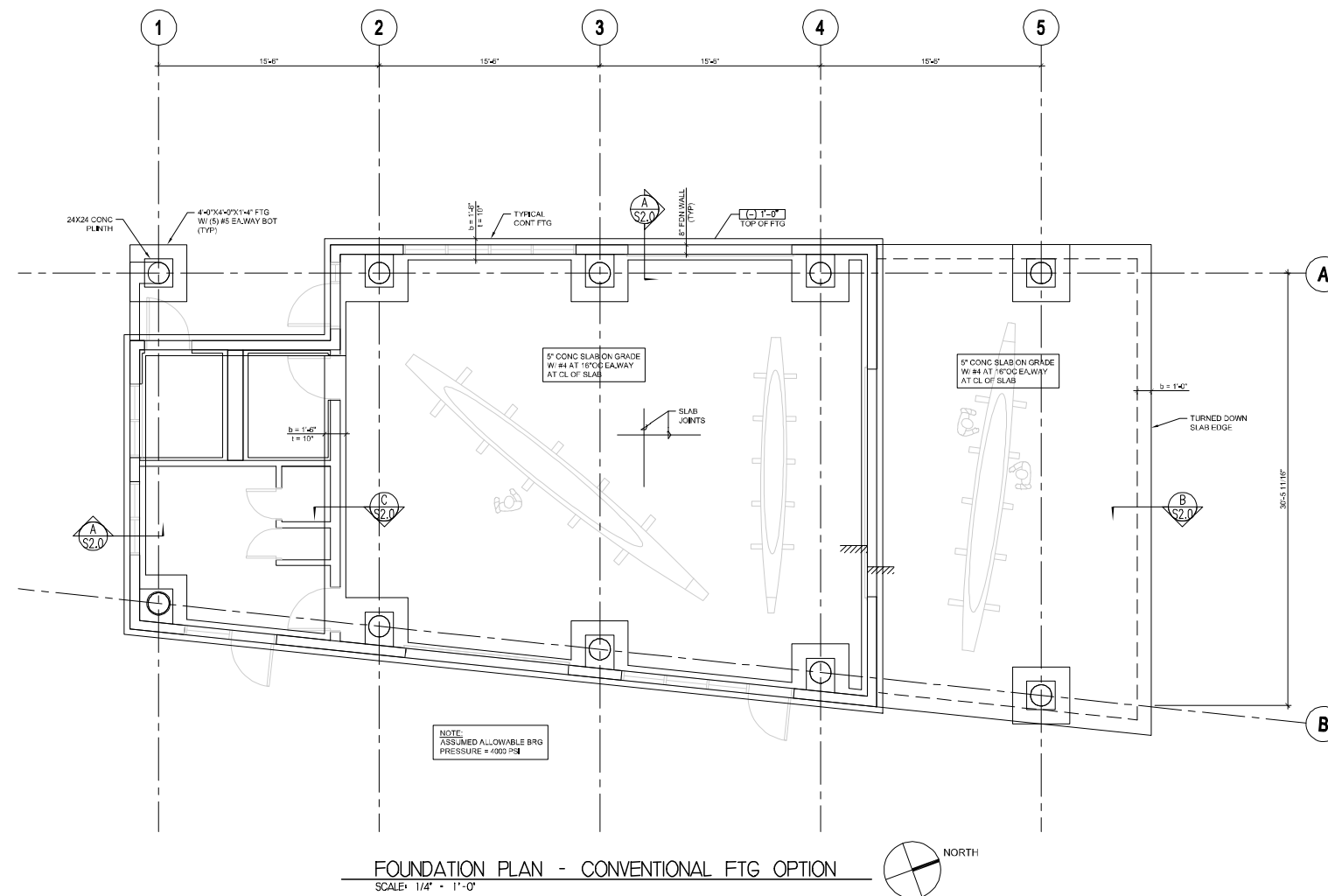
FOUNDATION PLAN
CONVENTIONAL
OPTION



DRAWN BY: MB
CHECKED BY: REM
JOB NO.: 20300.109

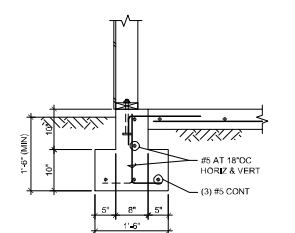
SHEET NO.: S2.0

All drawings and material appearing herein are the original and unpublished work of the architect and may not be duplicated, used, or disclosed without the written consent of Jones & Jones.

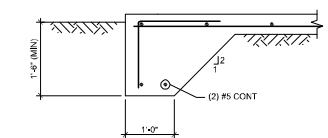


FOUNDATION PLAN - CONVENTIONAL FTG OPTION
SCALE: 1/4" = 1'-0"

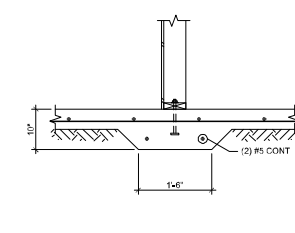
**DEEP SOIL MIXING OPTION #1
DRAWING DATED 3/18/2021
ESTIMATED 4/22/2021 @ \$1,165,805**



SECTION A
SCALE: 3/4" = 1'-0"



SECTION B
SCALE: 3/4" = 1'-0"



SECTION C
SCALE: 3/4" = 1'-0"

PSM CONSULTING ENGINEERS, INC.
2200 SIXTH AVENUE, SUITE 401
SEATTLE, WA 98121
P: 206.422.4590 F: 206.422.0422
www.psmengineers.com



1:16:00 PM 2/10/21 10:16:00 AM NW Native Canoe Center - Carving House - Foundation - Conventional FTG Option - S2.0.dwg 2/10/21 10:16:00 AM

Option #2: Concrete Filled Steel Pipe Piling

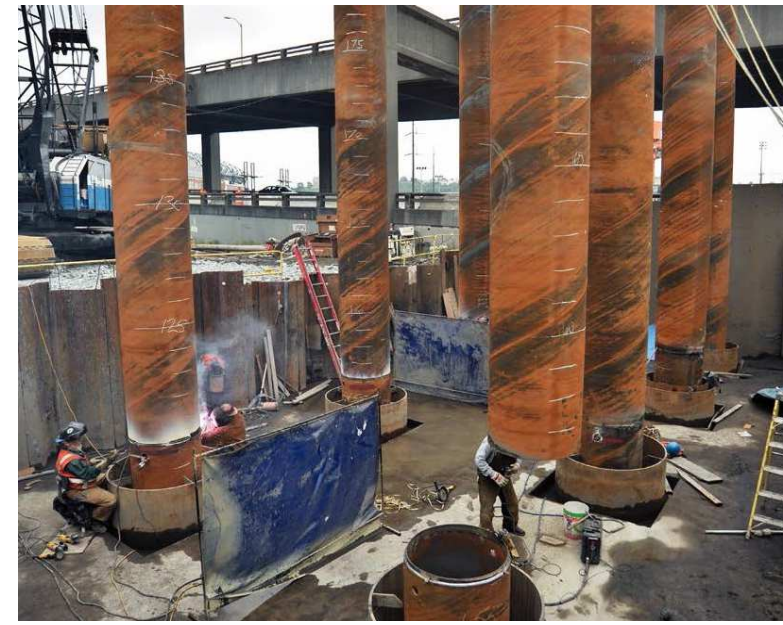
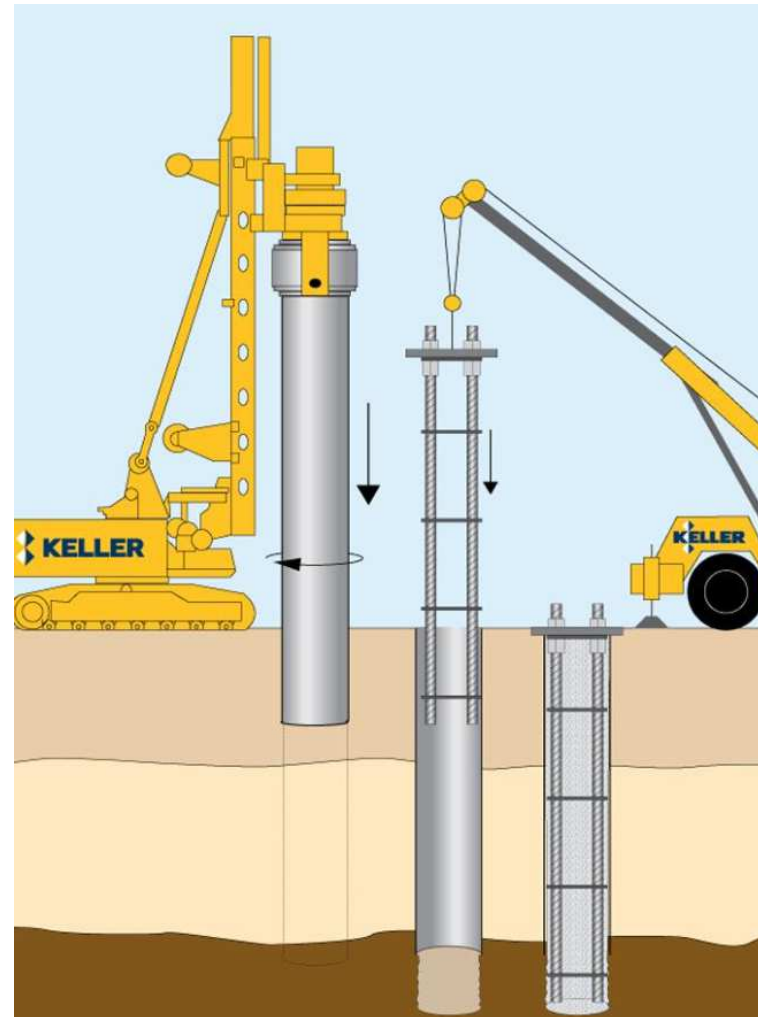
NWNCC
CARVING HOUSE

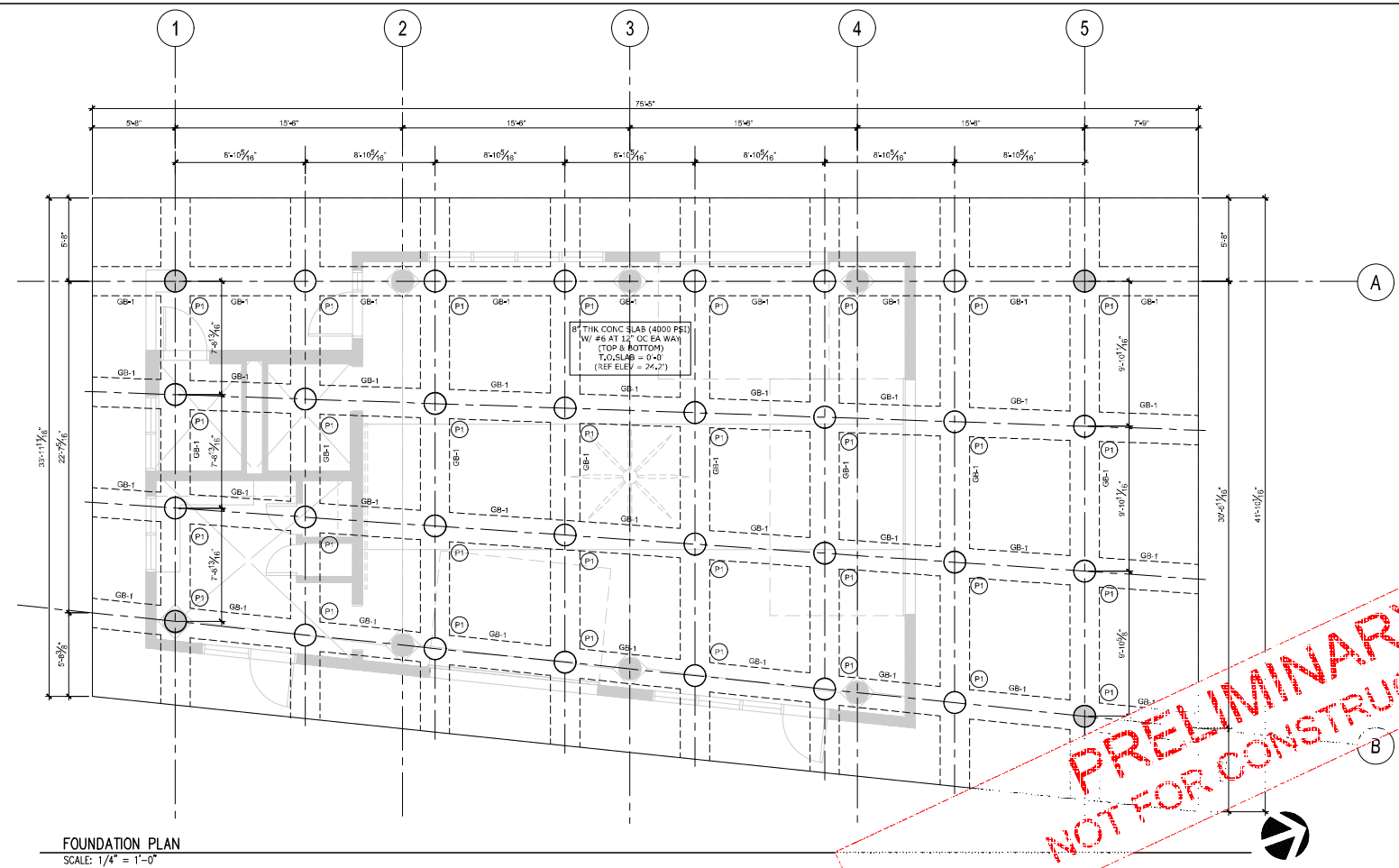


UNITED INDIANS
OF ALL TRIBES FOUNDATION

Seattle
Parks & Recreation
Healthy people. Healthy environment. Strong communities.

JONES JONES
ARCHITECTS
LANDSCAPE ARCHITECTS
PLANNERS





- TYPICAL NOTES**
1. INDICATES PILE. SEE S2.0 FOR PLAN & DETAILS.
 2. GB INDICATES GRADE BEAM. SEE S2.0 FOR SCHEDULE & DETAILS.
 3. SEE S2.0 FOR PILE CAP DETAILS.
 4. SEE ARCHITECTURAL DWGS FOR SLOPED SLAB THICKNESS IN SLOPED AREAS.
 5. VERIFY ALL SLAB BLOCKOUT SIZES AND LOCATIONS WITH PLUMBER, MECHANICAL, ELECTRICAL AND GENERAL CONTRACTOR. NOTIFY ENGINEER OF ALL BLOCKOUTS NOT SHOWN ON THE PLAN.
 6. NO PIPE OR CONDUIT MAY BE PLACED IN THE SLAB WITHOUT PRIOR APPROVAL FROM THE STRUCTURAL ENGINEER.
 7. BARS SHOWN ON THIS PLAN ARE IN ADDITION TO TYPICAL SLAB REINFORCING SHOWN ON S6.X AND S6.X.
 8. XXX DENOTES TOP REINFORCING OVER COLUMNS. ALL BARS TO BE CENTERED ON COLUMNS. AT INTERIOR SUPPORTS AND UP TO EDGE AT COLUMN NEAR SLAB EDGE.
 - LENGTH OF BARS - FEET
 - SIZE OF BARS
 - NUMBER OF BARS

GRADE BEAM SCHEDULE

MARK	SIZE	REINFORCING
GB-1	24" W x 48" H	(5) #3 TOP AND BOT BARS (3) #5 SIDE BARS EACH FACE #42 LEGGED STIRRUPS AT 12" OC

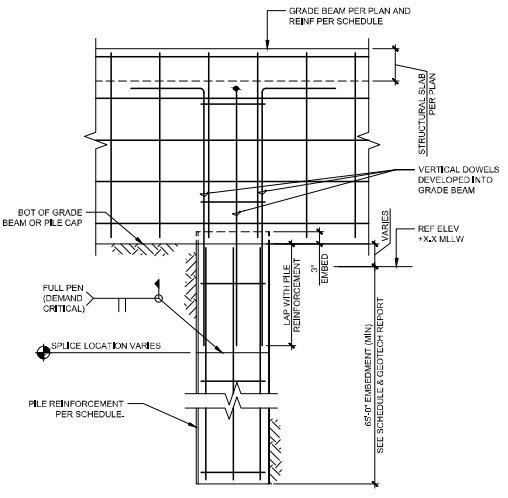
PILE SCHEDULE

MARK	SIZE	EMBEDMENT	REINFORCING
P1	18" DIA x 12' THK ASTM A332 (GRADE 3 (F _y = 45 KSI))	65'±	FILLED W/ 4000 PSI CONCRETE AND REINFORCING W/ (8) #5 BARS AND #4 AT 24" OC TIES

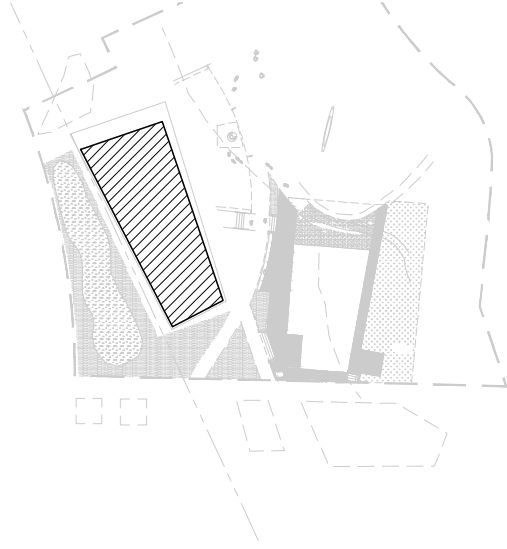
**PRELIMINARY
NOT FOR CONSTRUCTION**

**CURRENT STEEL PILE OPTION #2
32 PILES @ 65 FEET DEEP
DRAWING DATED 4/30/2021
ESTIMATE UPDATED 9/16/2021 @ \$797,639**

FOUNDATION PLAN
SCALE: 1/4" = 1'-0"



TYPICAL PILE DETAIL
SCALE: 3/4" = 1'-0"



KEY PLAN

**NW Native
Canoe Center
Carving House**



United Indians of
All Tribes Foundation
Seattle, WA

JONES & JONES

ARCHITECTS
LANDSCAPE ARCHITECTS
PLANNERS
106 SOUTH MAIN STREET
SUITE 800
SEATTLE, WA 98104
206 424 5782
WWW.JONESANDJONES.COM
ARCHITECTS AND
LANDSCAPE ARCHITECTS LTD.
106 SOUTH MAIN STREET
SUITE 200
SEATTLE, WASHINGTON
98104
TEL 206.424.7012
FAX 206.424.5283
WWW.JONESANDJONES.COM

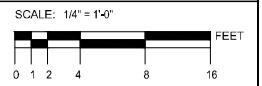
**MUP
APPLICATION**

DATE: 23 APRIL 2021

REVISIONS:

SPACE BELOW FOR REVIEW STAMP

**FOUNDATION PLAN
AND SECTIONS**

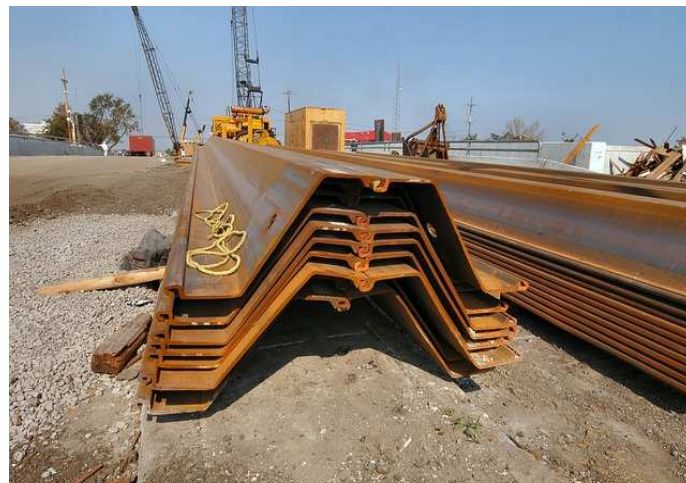
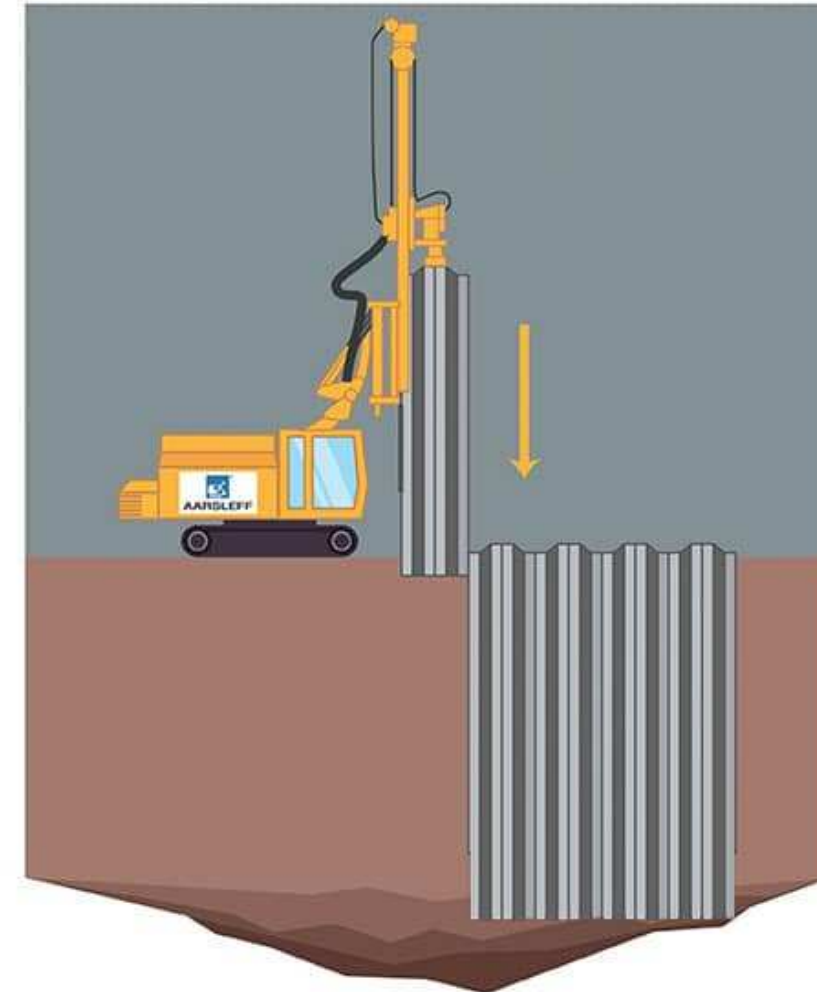
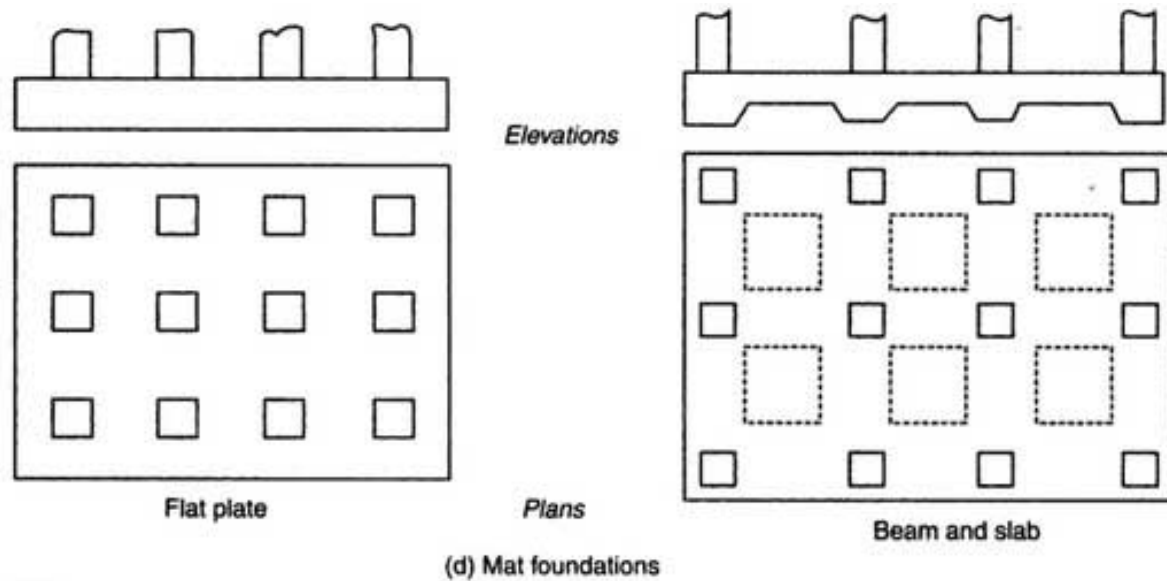


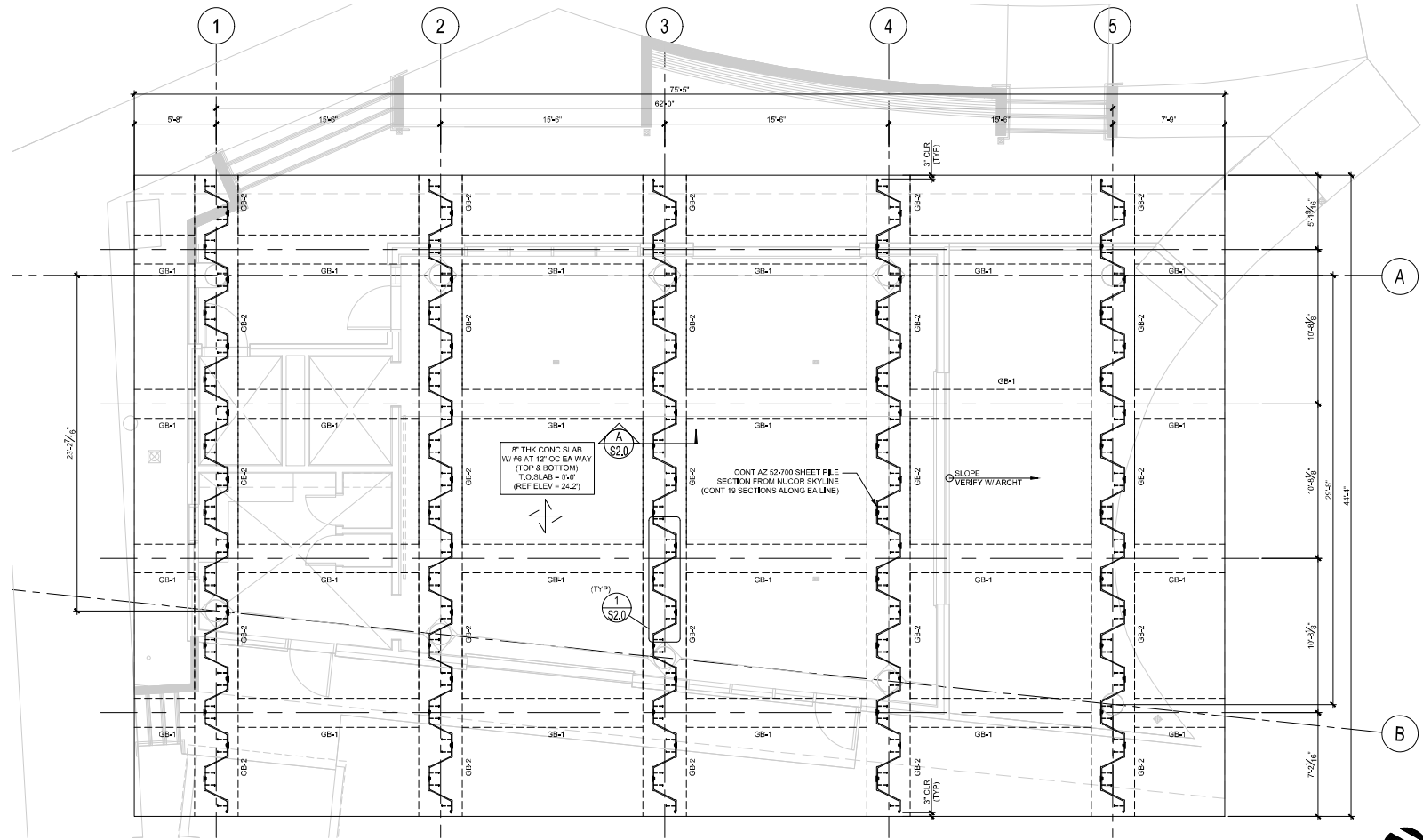
DRAWN BY: PSM
CHECKED BY: PSM
JOB NO.: 21012

SHEET NO.: **S2.0**

All drawings and material appearing herein are the original and unpublished work of the architect and may not be duplicated, used, or disclosed without the written consent of Jones & Jones.

Option #3: Mat Slab with Steel Sheet Piles



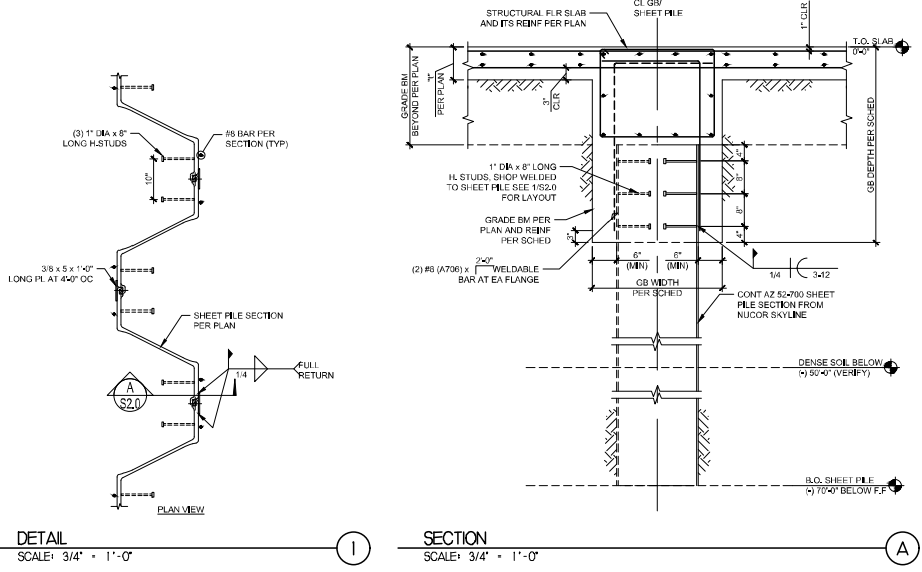


FOUNDATION PLAN (ALTERNATE LAYOUT)
SCALE: 1/4" = 1'-0"

- FOUNDATION NOTES**
1. SHEET PILE FOUNDATION PROPOSED ON FOUNDATION PLAN TO BE FROM NUCOR SKYLINE PRODUCTS OR SUPERIOR.
 2. ONLY HOT ROLLED STEEL SHEET PILE SECTIONS TO BE USED.
 3. SHEET PILE SECTIONS TO BE A572 GRADE-60 OR HIGHER.
 4. GB INDICATES GRADE BEAM. SEE S2.0 FOR SCHEDULE & DETAILS.
 5. SEE ARCHITECTURAL DWGS FOR SLOPED SLAB THICKNESS IN SLOPED AREAS.
 6. VERIFY ALL SLAB BLOCKOUT SIZES AND LOCATIONS WITH PLUMBER, MECHANICAL, ELECTRICAL AND GENERAL CONTRACTOR. NOTIFY ENGINEER OF ALL BLOCKOUTS NOT SHOWN ON THIS PLAN.
 7. NO PIPE OR CONDUIT MAY BE PLACED IN THE SLAB WITHOUT PRIOR APPROVAL FROM THE STRUCTURAL ENGINEER.

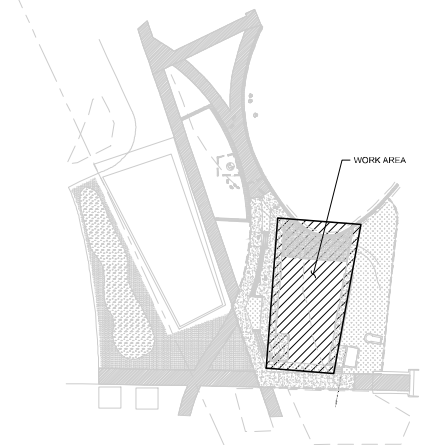
GRADE BEAM SCHEDULE		
MARK	SIZE	REINFORCING
GB-1	24" W x 24" H	(1) #5 TOP AND BOT BARS (1) #5 SIDE BARS EACH FACE #4@2 LEGGED STIRRUPS AT 12" OC
GB-2	32" W x 48" H	(4) #5 TOP AND BOT BARS (1) #5 SIDE BARS EACH FACE #4@2 LEGGED STIRRUPS AT 12" OC

CURRENT STEEL SHEET PILE OPTION #3
AZ-52-700 SHEET PILES 70 FEET DEEP
DRAWING DATED 9/8/2021
ESTIMATED 9/16/2021 @ \$1,931,286



DETAIL
SCALE: 3/4" = 1'-0"

SECTION
SCALE: 3/4" = 1'-0"



KEY PLAN

PSM CONSULTING ENGINEERS, INC.
2200 SIXTH AVENUE, SUITE 401
SEATTLE, WA 98121
P: 206.622.4580 F: 206.622.0422
www.psm-engineers.com



>>>>CAUTION - CALL 811<<<<
UTILITY NOTIFICATION CENTER
BEFORE YOU DIG!
WWW.CALL811.COM

Also, verify all underground utilities not located by the 811 service by using a commercial location service and call SPR Inspection Request Line (206) 894-7034.



United Indians of
All Tribes Foundation
Seattle, WA

JONES JONES

ARCHITECTS
LANDSCAPE ARCHITECTS
PLANNERS
105 SOUTH MAIN STREET
SUITE 300
SEATTLE, WA 98104
206.424.9192
www.jonesandjones.com
JOB NO.: 20300.221

NO.	REVISION	AS BUILT	DATE
7			
6			
5			
4			
3			
2			
1			

REVIEWED: PARK ENGINEER DATE
All work done in accordance with the City of Seattle Standard Plans and Specifications in effect on the date shown above, and supplemented by Special Provisions.

CONSTRUCTION PERMIT SET

All drawings and material appearing herein are the original and unpublished work of the architect and may not be duplicated, used, or disclosed without the written consent of Jones & Jones.



NW Native Canoe Center

Carving House

FOUNDATION PLAN AND DETAIL

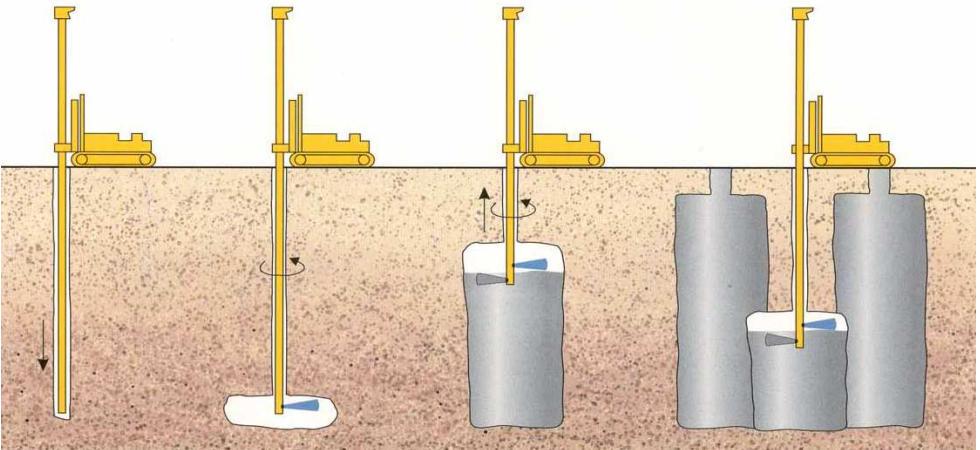
DESIGNED: PSM	DATE: 9/03/2021
DRAWN: SMV	SHEET: OF
CHECKED: PSM	
ORDINANCE NO.	S2.0 (ALT)
SPECIFICATION NO.	
SCALE: 1/4" = 1'-0"	

Summary of Foundation Options



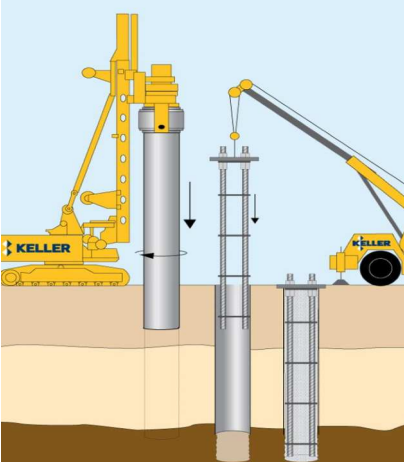
Option #1: Jet Grouting/Soil Mixing =

+/- \$1,165,805



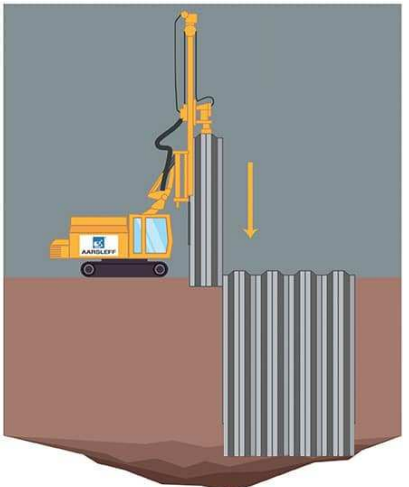
Option #2: Concrete-Filled Steel Pipe Piles =

+/- \$797,639



Option #3: Mat Slab with Steel Sheet Piles =

+/- \$1,931,286



Project Construction Costs



Jan. 2019

Oct. 2021

Construction Estimate
(no soft costs)

\$1,144,553

\$2,783,058

Next Steps

1. Explore new, additional funding sources.
2. Develop contingency plans for the facility and operations.
3. The Canoe Center must be built!

