

WING LUKE ELEMENTARY SCHOOL



> WING LUKE ELEMENTARY SCHOOL PROPOSED PROJECT OVERVIEW

Demolish the existing elementary school and construct a new 93,500 SF elementary school for a capacity of 660 students to address projected growth in the South Beacon Hill neighborhood.

> ANTICIPATED START OF CONSTRUCTION / OCCUPANCY OF BUILDING

Summer 2018 / Fall 2020

> DESIGN TEAM

Architect: NAC Architecture

Civil, Structural: Coughlin Porter Lundeen

Landscape: Cascade Design Collaborative

Food Service: JLR Design Group

Mechanical: Hargis Engineers

Electrical: Travis Fitzmaurice & Associates

Acoustical, AV: Greenbusch Associates

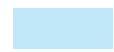
REQUESTED DEPARTURES

- > Departure #1: Building Height
- > Departure #2: Parking Quantity
- > Departure #3: On Street Bus Loading
- > Departure #4: Message Board

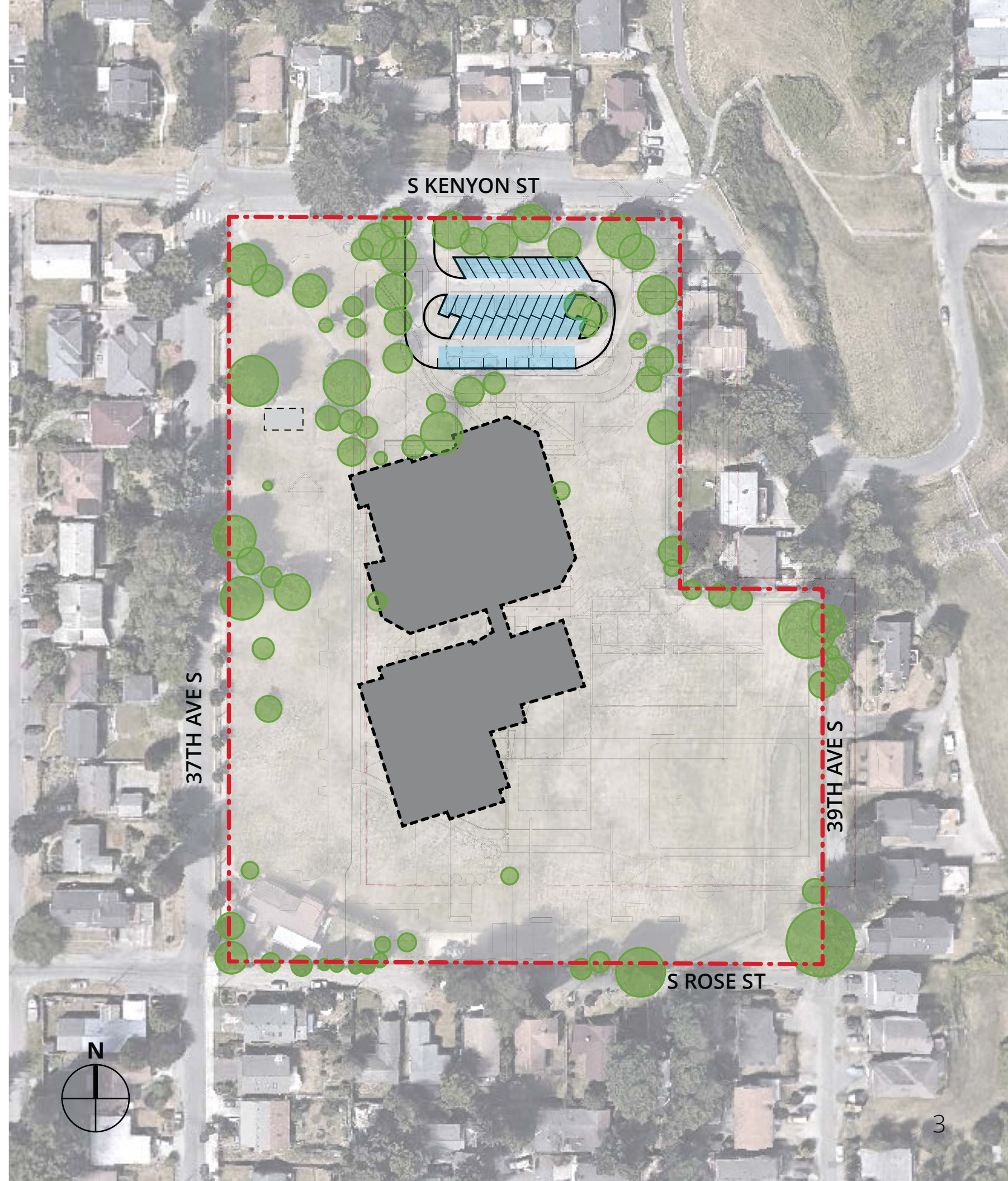
DEPARTURE #2: PARKING QUANTITY

39 Existing Permitted Parking Spaces

KEY



PARKING



DEPARTURE #2: PARKING QUANTITY

The Seattle Municipal Code (SMC) requires 1 parking space per 80 square feet of public assembly spaces (Commons and Gymnasium)

$$4200 \text{ SF} + 6150 \text{ SF} = 10,350 \text{ SF}$$

$$10,350 \text{ SF} / 80 \text{ SF} = 130 \text{ Parking Spaces}$$

DEPARTURE #2: PARKING QUANTITY

Event Name	Frequency of Event per Year	Estimated Attendees per Event (500)	Estimated Attendees per Event (660)	Estimated Vehicles per Event (500)	Estimated Vehicles per Event (660)
Community meetings (Scouts, Brownies)	Nightly	7 - 37	10 - 50	2 - 12	3 - 17
PTSA meeting	Monthly	7 - 37	10 - 50	2 - 12	3 - 17

Event Name	Frequency of Event per Year	Estimated Attendees per Event (500)	Estimated Attendees per Event (660)	Estimated Vehicles per Event (500)	Estimated Vehicles per Event (660)
Student music concert	Biannually	206	275	56 - 67	75 - 90
Student dance performance	Biannually	206	275	56 - 67	75 - 90
Awards assembly	Biannually	206	275	56 - 67	75 - 90
Guest events (drama, video, speakers)	Quarterly	345	460	97 - 112	130 - 150
Family / School Potlucks	Quarterly	345	460	97 - 112	130 - 150
5th grade graduation	Annually	412	550	116 - 135	155 - 180
Academic night	Annually	487	650	138 - 161	185 - 215
Multicultural night	Annually	487	650	138 - 161	185 - 215
Fitness Night	Annually	487	650	138 - 161	185 - 215

DEPARTURE #2: PARKING QUANTITY

50 Parking Spaces

+ 10 Spaces Added Since First Meeting

60 Proposed Parking Spaces

The 500 student school is projected to have 50 Full Time and 25 Part Time staff.

This is 62 full time equivalent (FTE) staff.

KEY

 PARKING



DEPARTURE #2: PARKING QUANTITY

The site will have approximately 700 lineal feet of on street parking.

That is equivalent to approximately 38 parking spaces

KEY
PARKING



DEPARTURE #2: PARKING QUANTITY

Recent SPS Elementary Schools

School Name	Enrollment Capacity	Staff	Site Area (acres)	On-Site Parking Provided/Required	Departure
Arbor Heights Elementary	660	75	5.65	55 / 138	80
Genesee Hill Elementary	660	70	6.82	71 / 135	64
Loyal Heights	660	72	2.85	0 / 70	70
Magnolia Elementary	500	52	2.50	6 / 79	73
Olympic Hills Elementary	660	65	6.49	82 / 136	54
Queen Anne Elementary	500	60	3.00	32 / 118	86
Thornton Creek Elementary	660	75	7.66	91 / 162	71
Wing Luke Elementary	660	96	6.85	50 / 130	80
Wing Luke Elementary	500	75	6.85	60 / 130	70

DEPARTURE #2: PARKING QUANTITY

Van Asselt Elementary School

384 Enrollment

101 Staff

9.5 Acre Site

~ 100 Parking Spaces

~ $44/100 = 44$ percent full



DEPARTURE #2: PARKING QUANTITY

MLK Jr. Elementary School

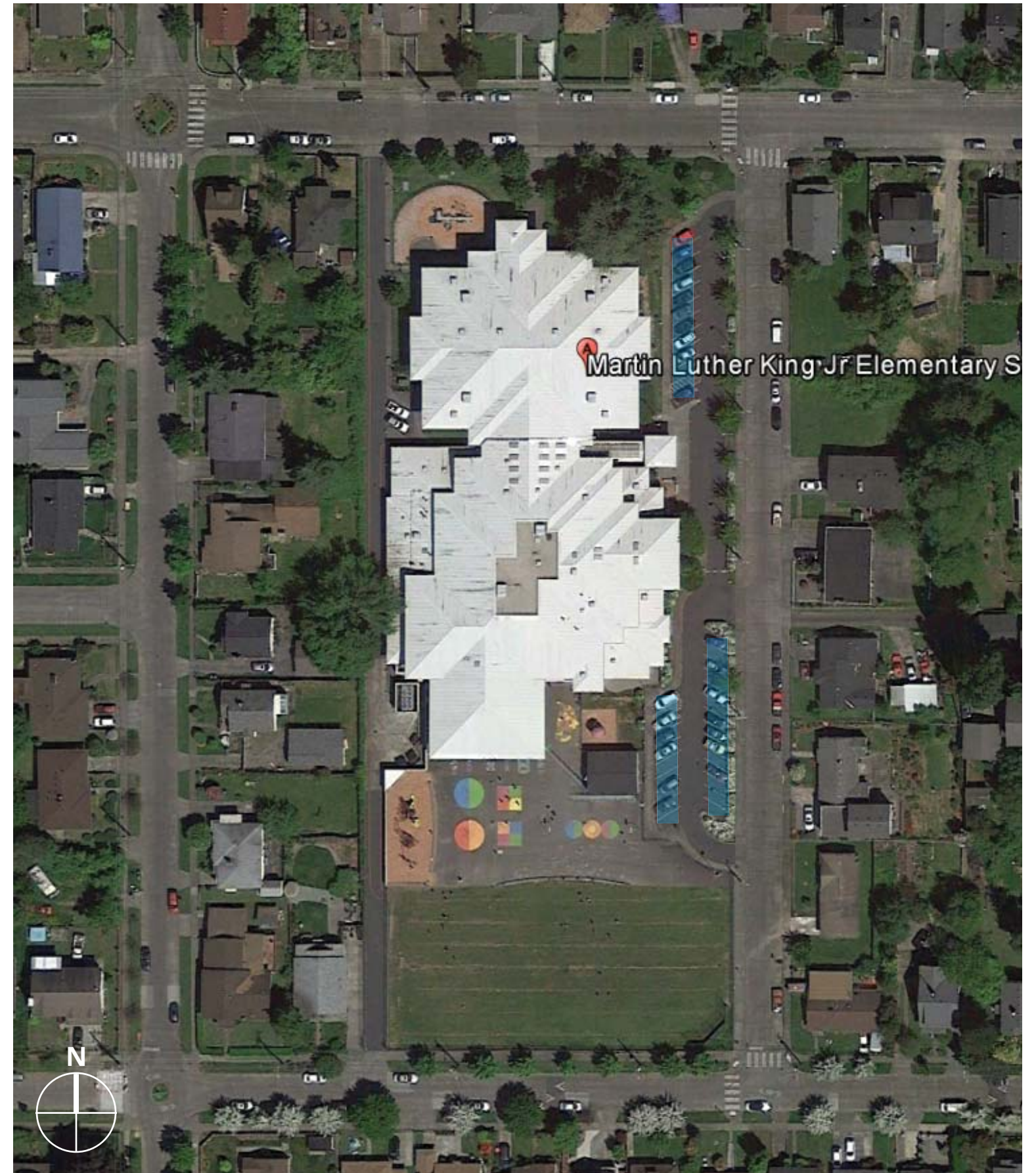
323 Enrollment

54 Staff

1.93 Acre Site

~ 34 Parking Spaces

~ 22/34 = 65 percent full



DEPARTURE #2: PARKING QUANTITY

Graham Hill Elementary School

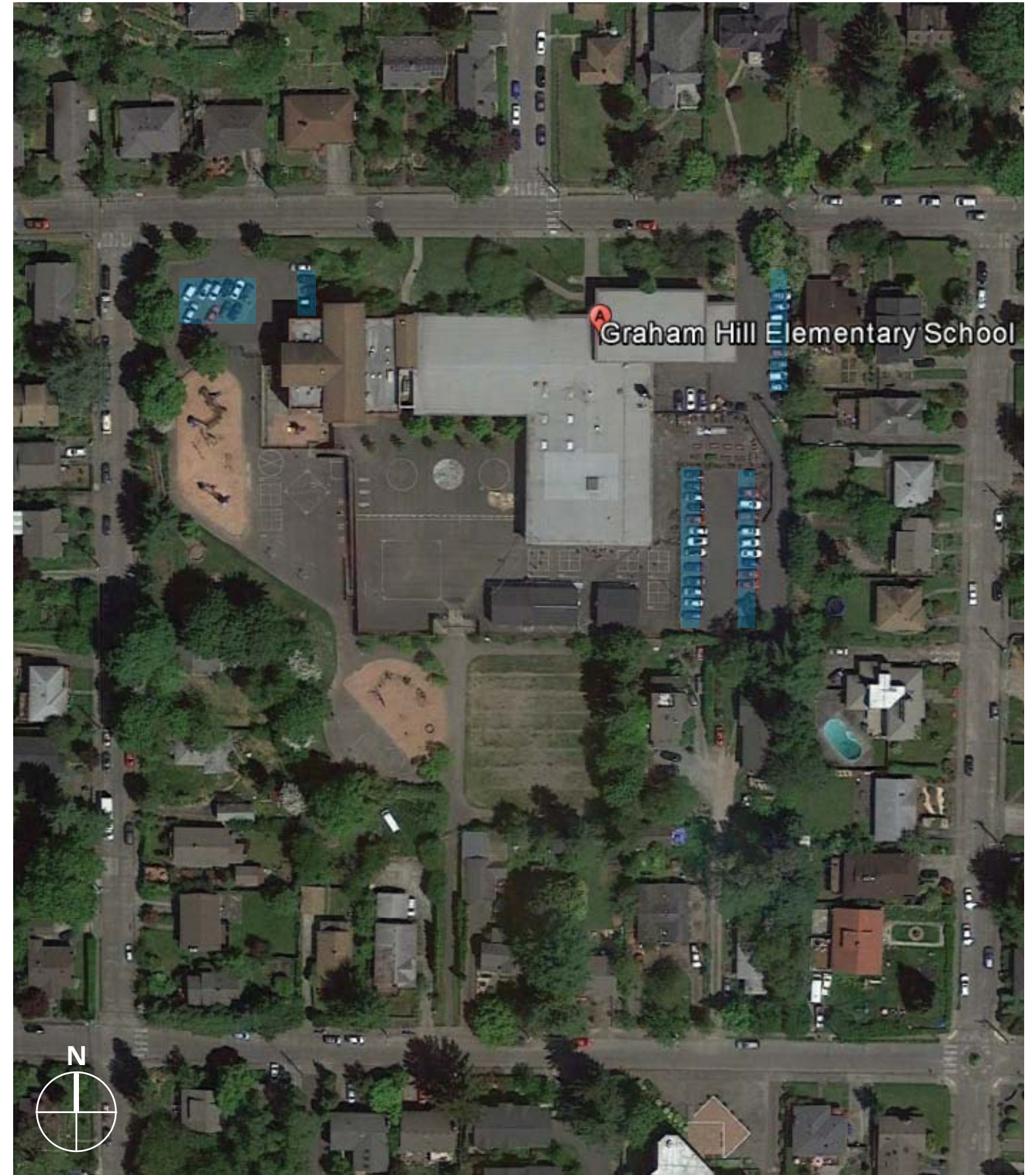
351 Enrollment

76 Staff

4.5 Acre Site

~ 53 Parking Spaces

~ $46/53 = 87$ percent full



DEPARTURE #2: PARKING QUANTITY

Dunlap Elementary School

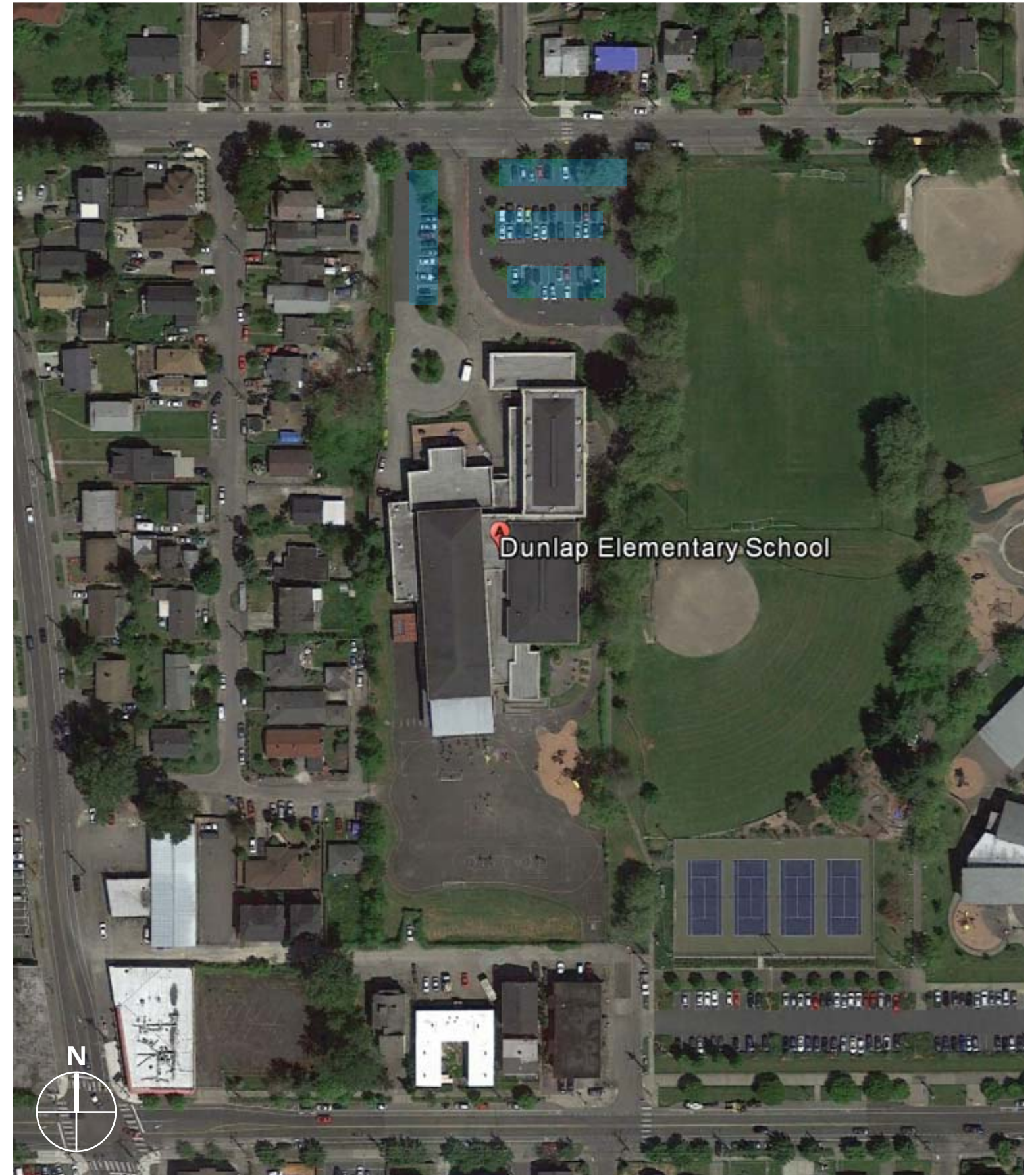
300 Enrollment

54 Staff

4.89 Acre Site

~ 64 Parking Spaces

~ $48/64 = 75$ percent full



DEPARTURE #2: PARKING QUANTITY

Emerson Elementary School

314 Enrollment

60 Staff

1.84 Acre Site

~ 5 Parking Spaces

~ 5/5 = 100 percent full



DEPARTURE #2: PARKING QUANTITY

Aki Kurose Middle School

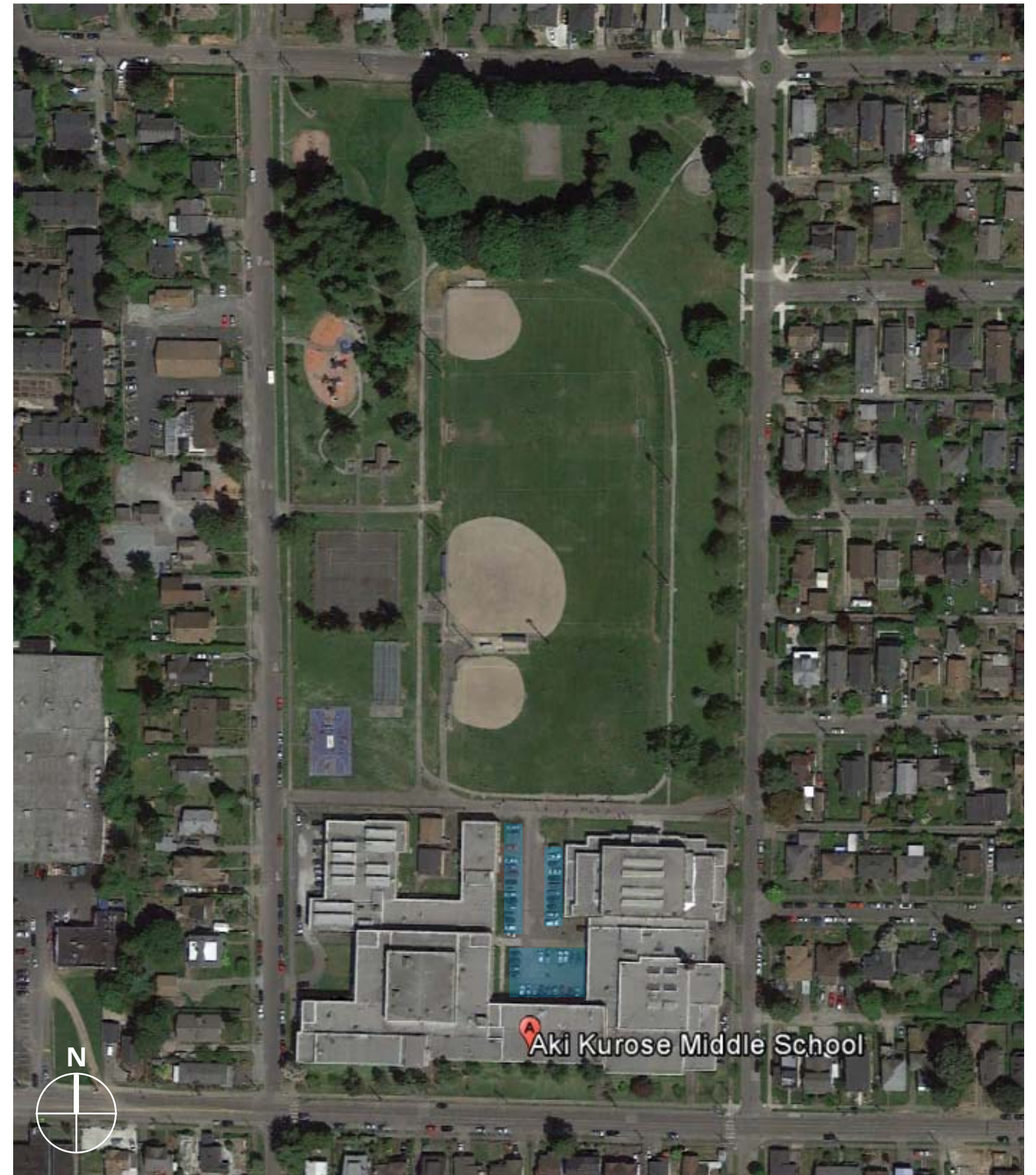
720 Enrollment

125 Staff

4.8 Acre Site

~ 47 Parking Spaces

~ $43/47 = 91$ percent full



DEPARTURE #2: PARKING QUANTITY

Rainier Beach High School

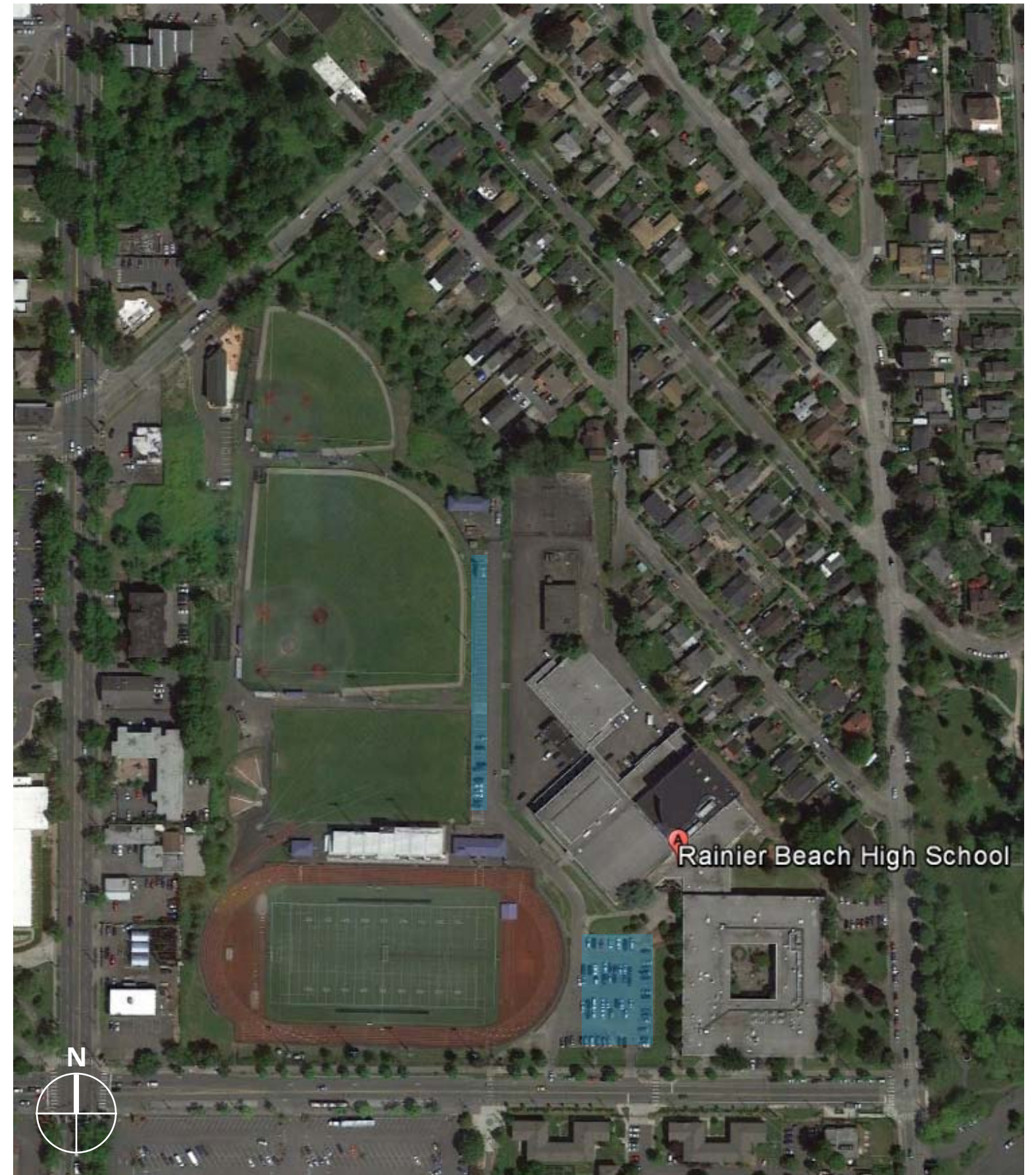
786 Enrollment

125 Staff

2.16 Acre Site

~ 120 Parking Spaces

~ 70/120 = 58 percent full



DEPARTURE #2: PARKING QUANTITY

Recent SPS Elementary Schools

School Name	Enrollment	Staff	Site Area (acres)	On-Site Parking Provided (approx)
Van Asselt Elementary	384	101	9.5	100
MLK Jr Elementary	323	54	1.93	34
Graham Hill Elementary	351	76	4.5	53
Dunlap Elementary	300	54	4.89	64
Emerson Elementary	314	60	1.84	2
Aki Kurose Middle School	720	125	4.80	47
Rainier Beach High School	786	125	21.6	120
Wing Luke Elementary	500	75	6.85	60

DEPARTURE #2: PARKING QUANTITY

School Bus Load and Unload

- School buses will load and unload students along the East curb side zone of 37th Ave S.
- Signs will be posted that state "School Bus Only" with the hours of enforcement shown.
- Outside of these hours, this curb side zone may be used for private vehicle on-street parking.

Private Vehicle Drop Off / Pick Up

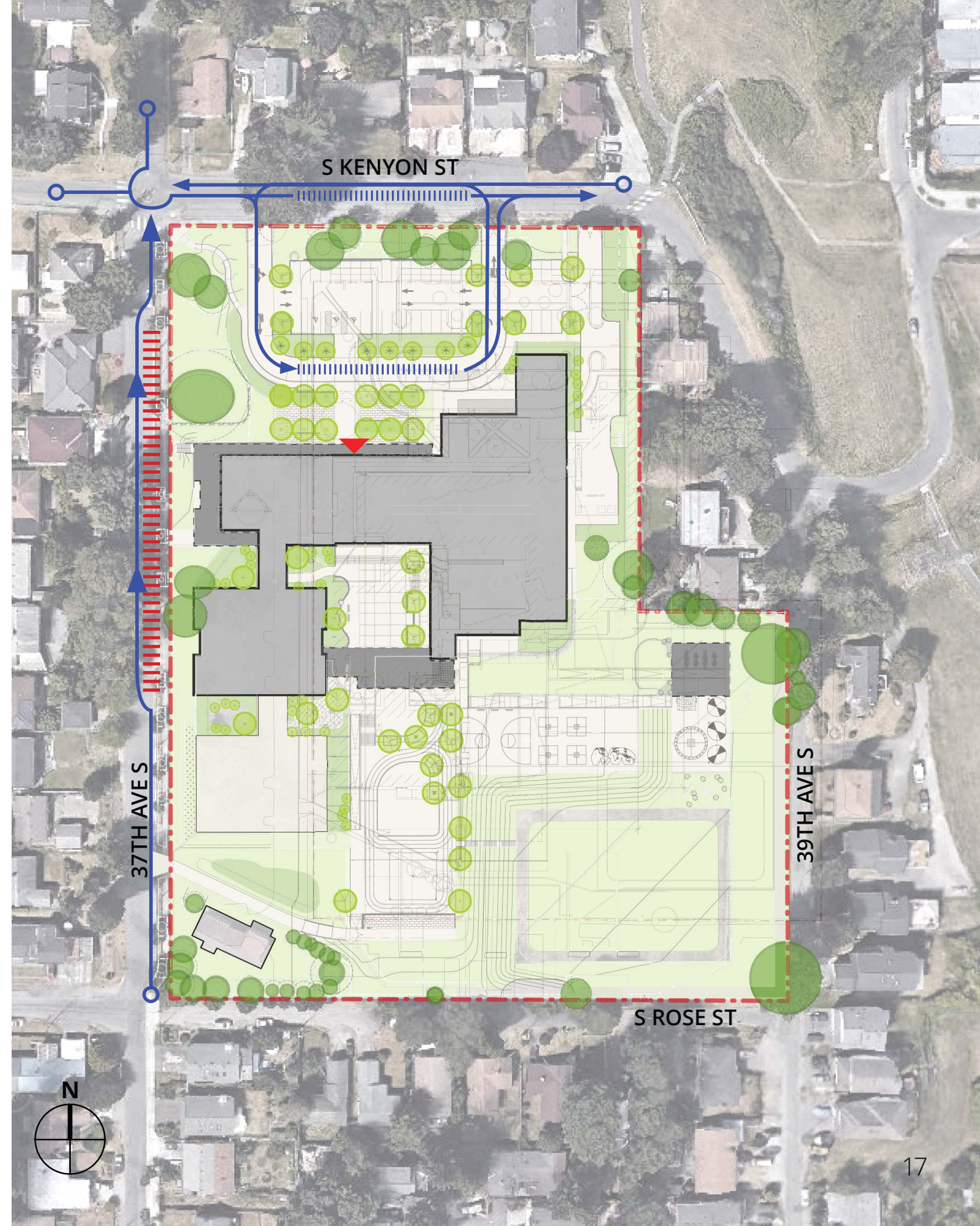
- Parents may drop off and pick up students at the on-site load/unload zone.
- Approach the school using S Kenyon St from either direction.
- Turn into the site and drop-off or pick-up your student(s) at the load/unload zone.
- Exit the site as a right-turn only from the driveway on S Kenyon St.
- As an alternative, any private vehicle on street parking space in the neighborhood may be used for load/unload. Students must use signed crosswalks to get to the school.

Pedestrian Access

- The Chief Sealth Trail is a major pedestrian access.
- Other pedestrian access is routed to 37th Ave S, outside the play area

Legend

- ||||| Bus load/unload
- ||||| Private vehicle load/unload
- Private vehicle routing
- - - Fence
- ▲ Main Public Entrance



DEPARTURE #2: PARKING QUANTITY

TRANSPORTATION TECHNICAL REPORT for Wing Luke Elementary School Replacement

PREPARED FOR:
Seattle Public Schools

PREPARED BY:



June 28, 2017

Based on the above findings, the following measures are recommended to reduce the traffic and parking impacts associated with the Wing Luke Elementary School expansion project.

- A. Prior to the school opening, the District and school principal should establish a Transportation Management Plan (TMP) to educate parents and students about the preferred access and circulation for the new school layout. The effort should encourage supervised walking (such as walking school buses), carpooling, and school bus ridership for those eligible. The plan should define clear procedures and travel routes and preferred load/unload locations.
- B. The District should work with SDOT to confirm the locations, extent, and signage of school-bus and passenger-vehicle load/unload zones adjacent to the school site.
- C. The District should engage with the Seattle School Safety Committee (of which SDOT is a member) to review walk routes and determine if any changes should be made to crosswalk locations, signage, pavement markings, school zone speed limits, or crossing guard locations.
- D. The District and school administration should develop a neighborhood communication plan to inform nearby neighbors of events each year. The plan should be updated annually (or as events are scheduled) and should provide information about the dates, times, and rough magnitude of attendance. The communication would be intended to allow neighbors to plan for the occasional increase in on-street parking demand that would occur with large events.
- E. The alternative access to the service/loading dock proposed at the northeast corner of the site would remain closed with gates or bollards except for very infrequent use (once or twice per year) by large delivery trucks. During use of this access, a flagger should be present to control vehicular and pedestrian movements and assist with the movements into and out of this access.
- F. The District should require the selected contractor to develop a construction management plan (CMP) that addresses traffic and pedestrian control during school construction. It should define truck routes, lane closures, walkway closures, and parking disruptions, as necessary. To the extent possible, the CMP should direct trucks along the shortest route to arterials and away from residential streets to avoid unnecessary conflicts with resident and pedestrian activity. The CMP may also include measures to keep adjacent streets clean on a daily basis at the truck exit points (such as street sweeping or on-site truck wheel cleaning) to reduce tracking dirt off-site. The CMP should identify parking locations for the construction staff; to the extent possible, construction employee parking should be contained on-site.

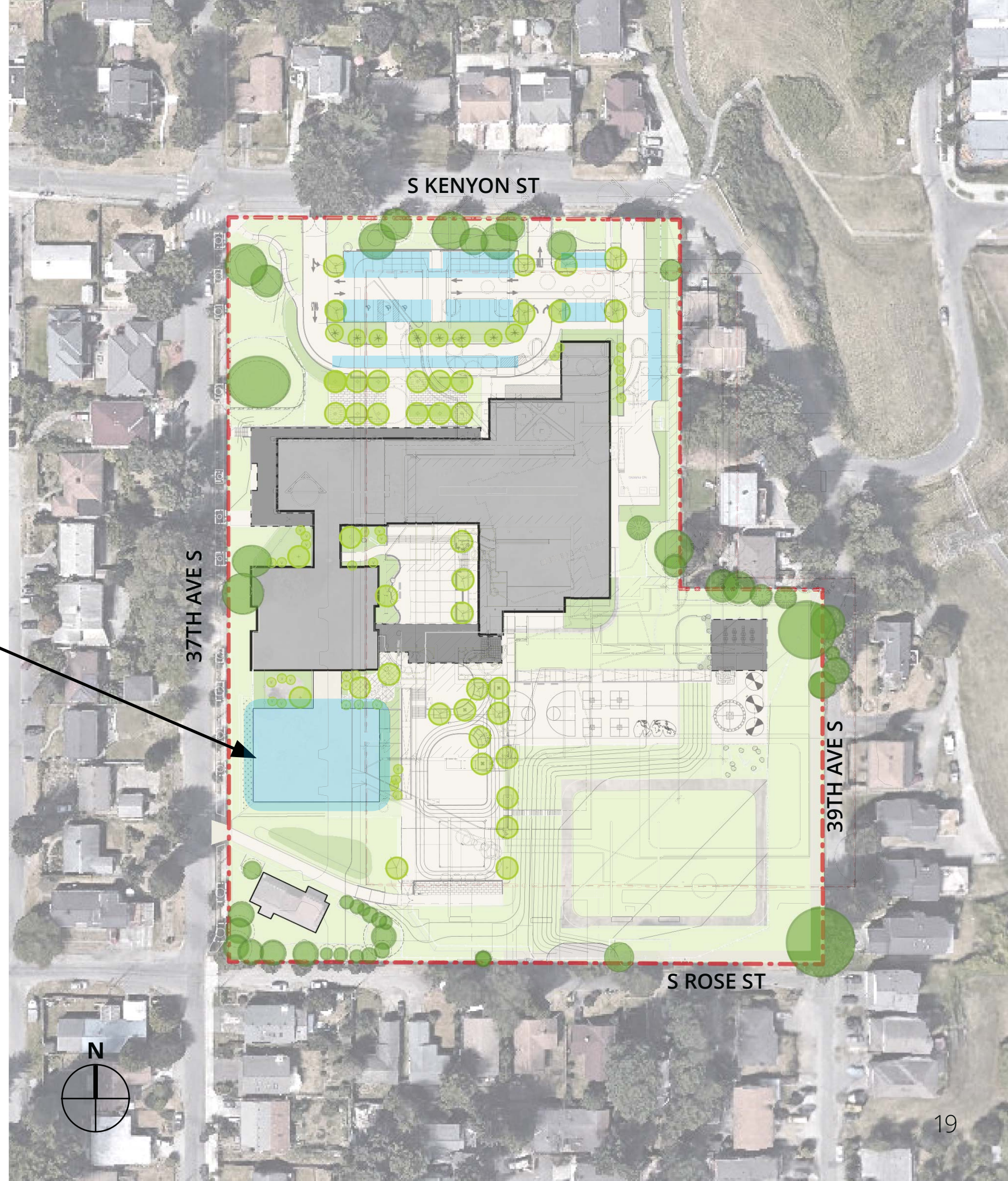
DEPARTURE #2: PARKING QUANTITY

60 Parking Spaces in Proposed Design

Asphalt Play Area
Used daily for student recreation.
Used during events for overflow parking.

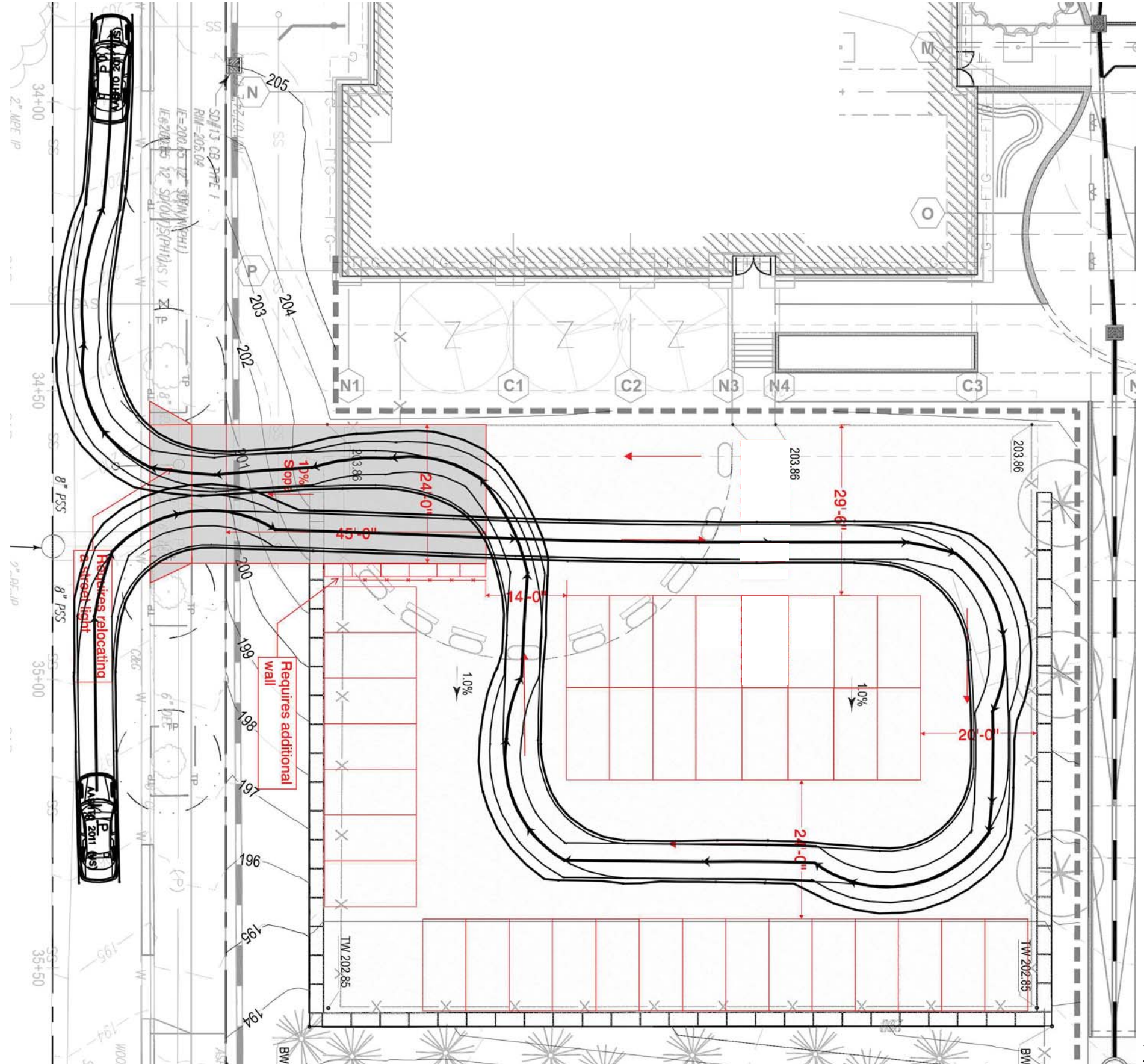
KEY

 PARKING



DEPARTURE #2: PARKING QUANTITY

37 Overflow Parking Spaces available during large events



DEPARTURE #2: PARKING QUANTITY

SMC 23.54.015 Table C, Row N - Parking for Public Uses and Institutions

N. Schools, public elementary and secondary

1 space for each 80 square feet of all auditoria or public assembly rooms . . . for new public schools on a new or existing public school site

Auditoria and Public Assembly Rooms

Commons and Gymnasium

Total Square Footage

$4200 \text{ SF} + 6150 \text{ SF} = 10,350 \text{ SF}$

Number of Code Required Parking Spaces



$10,350 \text{ SF} / 80 \text{ SF} = 130 \text{ Parking Spaces}$

Proposed Number of Parking Spaces

60 Parking Spaces

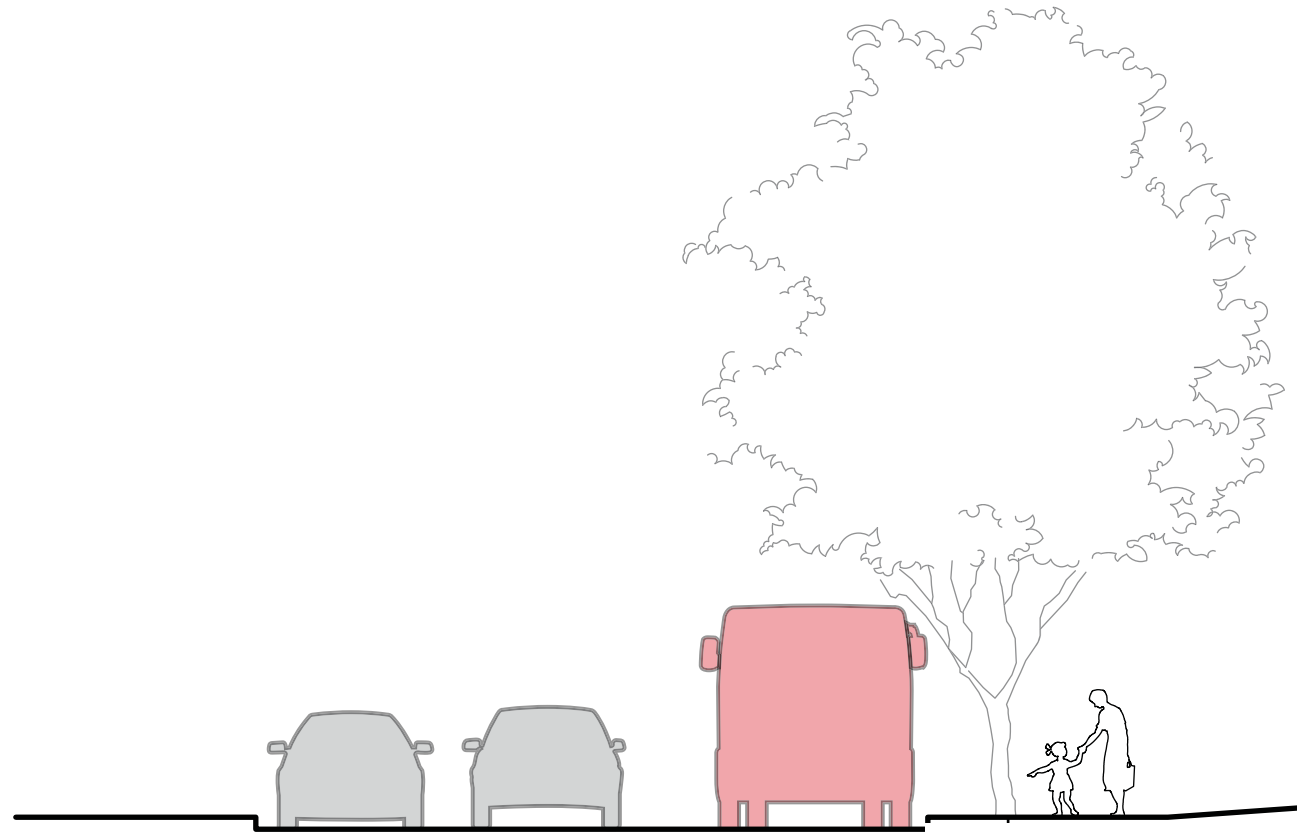
> **DEPARTURE REQUESTED FOR 70 PARKING SPACES**

DEPARTURE #3: ON-STREET BUS LOADING



- KEY**
-  CURRENT BUS LOADING ZONE
 -  PARENT DROP OFF



DEPARTURE #3: ON-STREET BUS LOADING

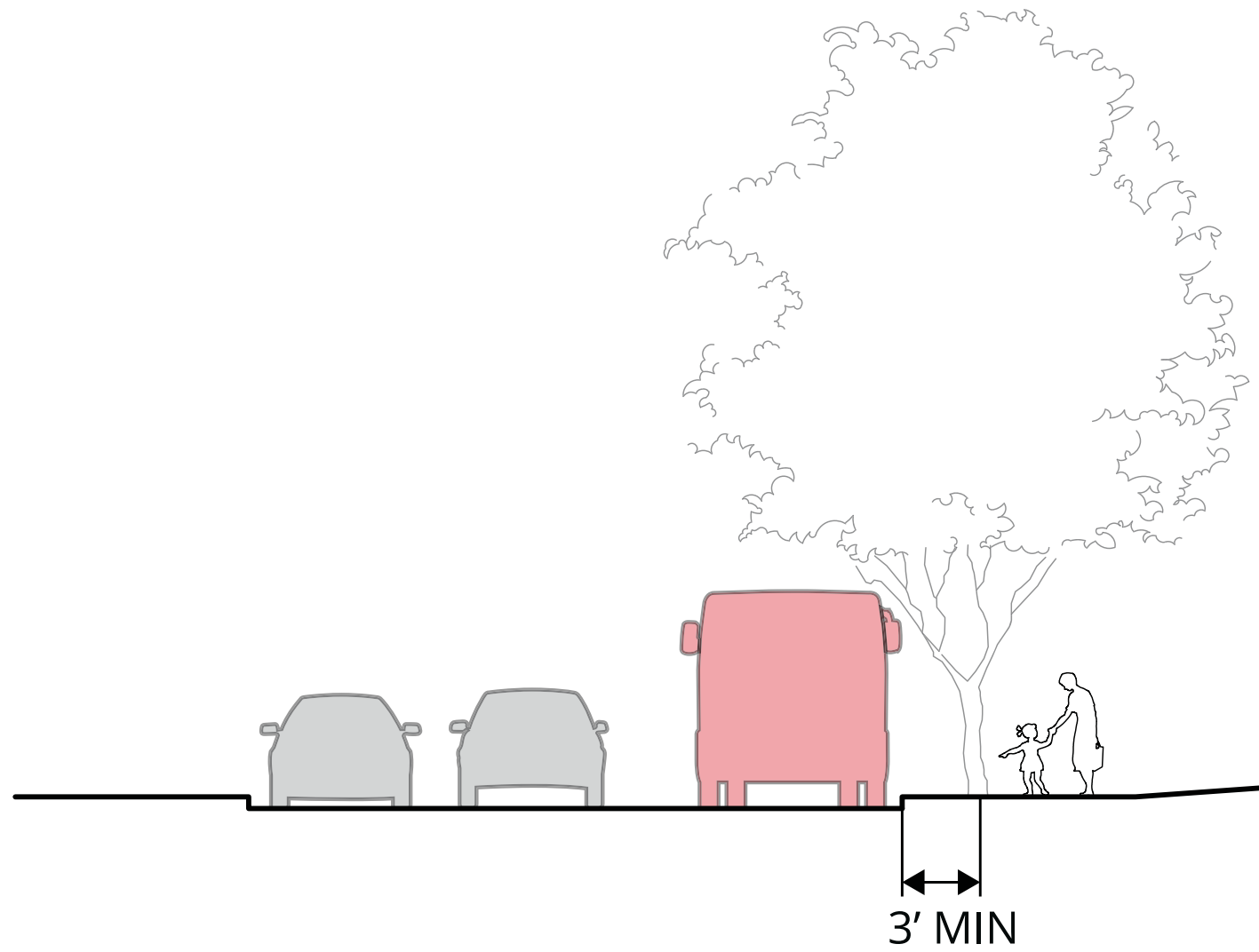


KEY

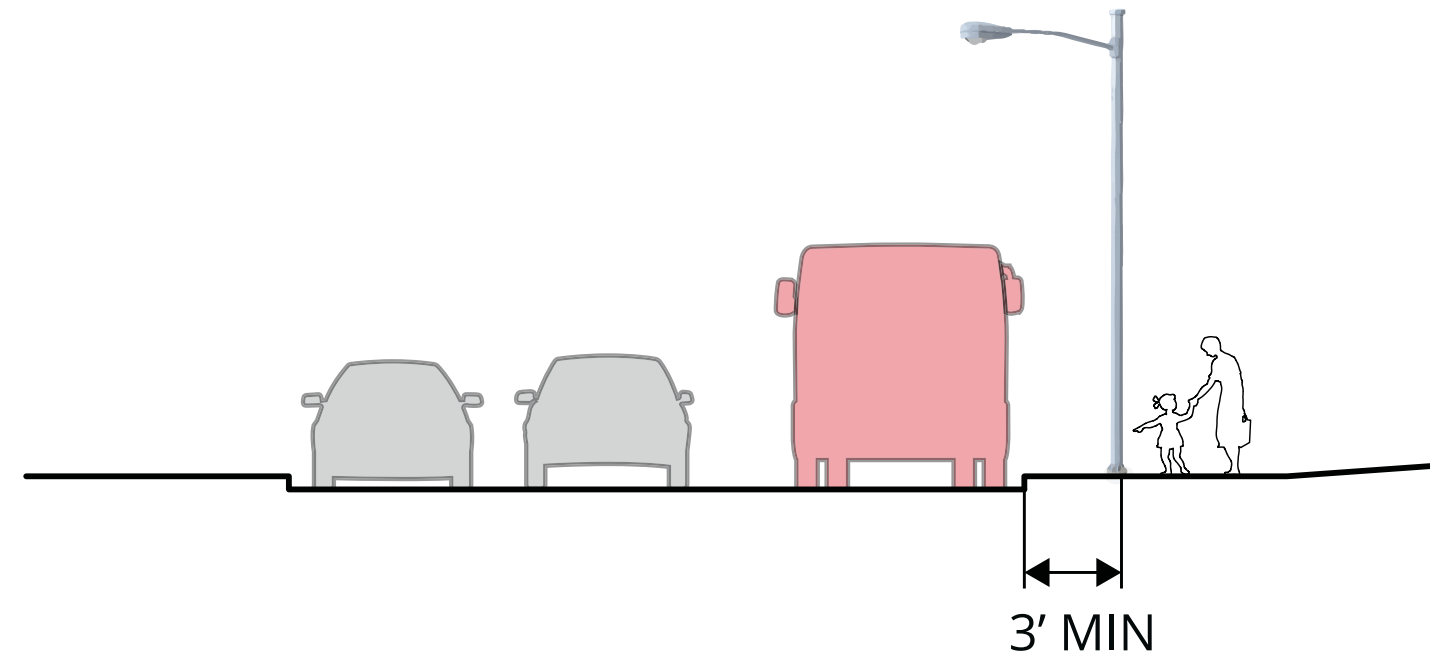
-  PROPOSED BUS LOADING ZONE
-  PARENT DROP OFF



DEPARTURE #3: ON-STREET BUS LOADING



Minimum Clearance from Curb to Tree Centerline



Minimum Clearance from Curb Utility Pole

DEPARTURE #3: ON-STREET BUS LOADING

Arbor Heights Elementary School



KEY ■ BUS LOADING ZONE ■ PARENT DROP OFF

DEPARTURE #3: ON-STREET BUS LOADING

Arbor Heights Elementary School



on street parking

drive aisle

bus loading

DEPARTURE #3: ON-STREET BUS LOADING

School Bus Load and Unload

- School buses will load and unload students along the East curb side zone of 37th Ave S.
- Signs will be posted that state "School Bus Only" with the hours of enforcement shown.
- Outside of these hours, this curb side zone may be used for private vehicle on-street parking.

Private Vehicle Drop Off / Pick Up

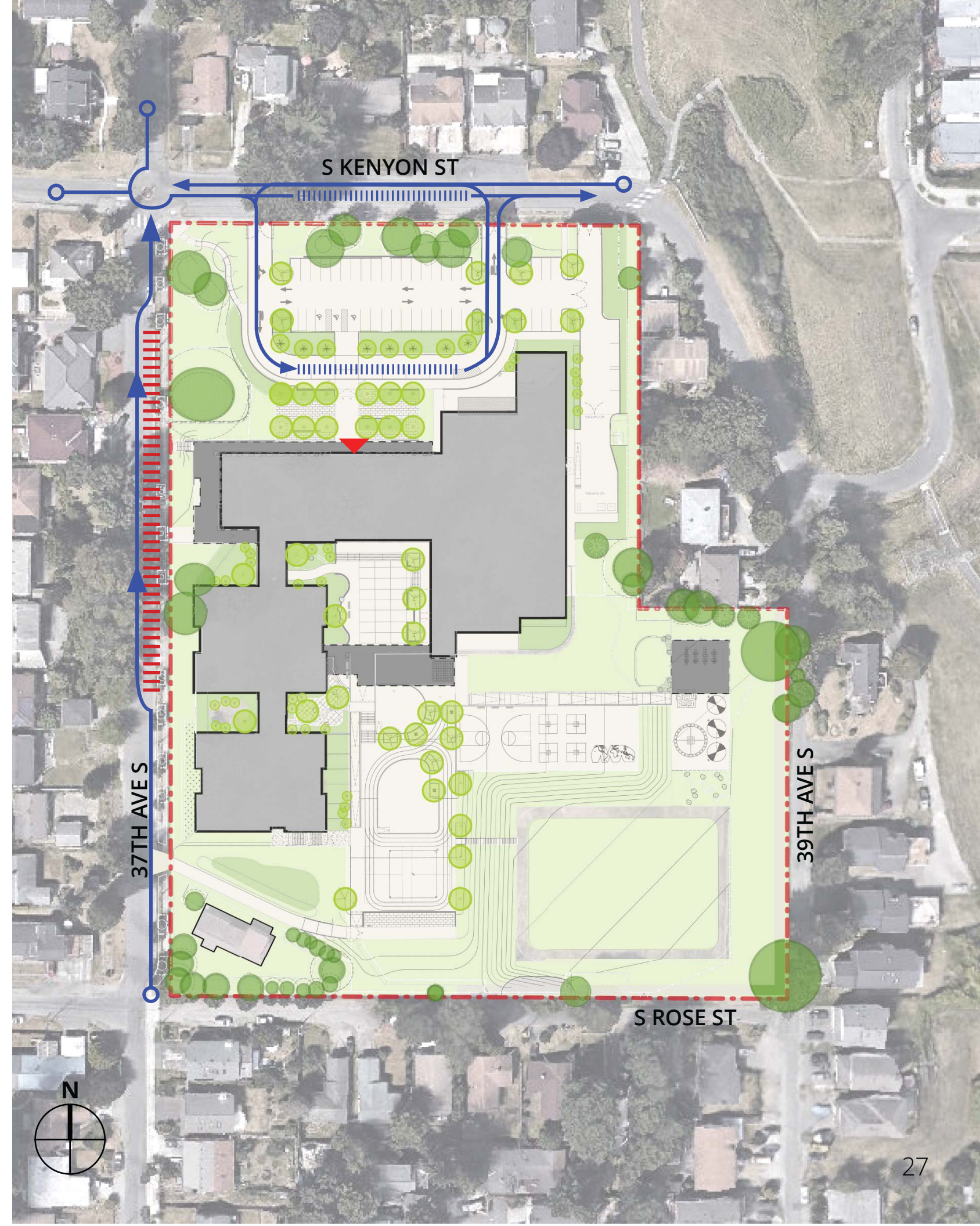
- Parents may drop off and pick up students at the on-site load/unload zone.
- Approach the school using S Kenyon St from either direction.
- Turn into the site and drop-off or pick-up your student(s) at the load/unload zone.
- Exit the site as a right-turn only from the driveway on S Kenyon St.
- As an alternative, any private vehicle on street parking space in the neighborhood may be used for load/unload. Students must use signed crosswalks to get to the school.

Pedestrian Access

- The Chief Sealth Trail is a major pedestrian access.
- Other pedestrian access is routed to 37th Ave S, outside the play area

Legend

- ▬▬▬▬▬▬▬▬ Bus load/unload
- ▬▬▬▬▬▬▬▬ Private vehicle load/unload
- Private vehicle routing
- Pedestrian access
- ▬▬▬▬▬▬ Fence
- ▲ Main Public Entrance



DEPARTURE #3: ON-STREET
BUS LOADING

SMC 23.51B.002.1.4.b - Bus and Truck Loading
and Unloading

4. When a public school is remodeled or rebuilt at the same site, an existing on-street bus loading area is allowed if the following conditions are met:

- a. The school site is not proposed to be expanded;
- b. The student capacity of the school is not being expanded by more than 25 percent; and
- c. The location of the current on-street bus loading remains the same.

Existing school student capacity

365 students

Proposed school student capacity

500 students



> DEPARTURE REQUESTED TO MAINTAIN CURRENT
ON-STREET BUS LOADING ON 37TH AVE SOUTH

SUMMARY

DEPARTURE REQUEST SUMMARY

- > Departure #1: Building Height (13'-0" Above Height Limit)
- > Departure #2: Parking Quantity (80 Parking Spaces)
- > Departure #3: Maintain On-Street Bus Loading
- > Departure #4: Double-Sided, Electronic, Changing Image Message Board

KEY

-  BUILDING HEIGHT DEPARTURE
-  BUS LOADING ZONE
-  PARKING SPACES

