

SEATTLEU

Standing Advisory Committee
November 10, 2020

Annual Status Report Highlights

July 1, 2019 through June 30, 2020

- Development Activity
 - Construction is underway on the Jim and Janet Sinegal Center for Science and Innovation (CSI) new building opening Fall Quarter 2021 - Design comments incorporated including:
 - Plaza and major entry on 12th Avenue with interior passage to campus
 - Street activating uses
 - 12th Avenue façade primarily of glass provides visibility into activities
 - Streetscape improvements
 - Prepared submittal for 1300 Columbia property for SDCI review as recommended by the SAC on April 2, 2019
 - Terminated lease of 2,000 square feet at 1100 E. Union St.

Annual Status Report Highlights

July 1, 2019 through June 30, 2020

- Transportation Management
 - Completed Commute Trip Reduction surveys
 - Employee survey conducted in October 2019
 - Student survey conducted in February 2020
 - 21% combined SOV rate compared to 29% from last annual report
 - Significant progress exceeds SOV goal of 35% in MIMP
 - Implemented new parking enforcement system
 - Increased motorcycle parking rates from \$50 to \$300/year
 - Updated and implemented policies and recommendations on flextime, telecommuting and compressed workweeks
 - Traffic flow and pedestrian safety improvements
 - Provided easements for SDOT Madison Bus Rapid Transit project

Jim and Janet Sinegal Center for Science and Innovation (CSI)



Construction Photos

Sinegal CSI Construction Photos



Sinegal CSI Construction Photos



12th Avenue Entrance - Exterior

Sinegal CSI Construction Photos

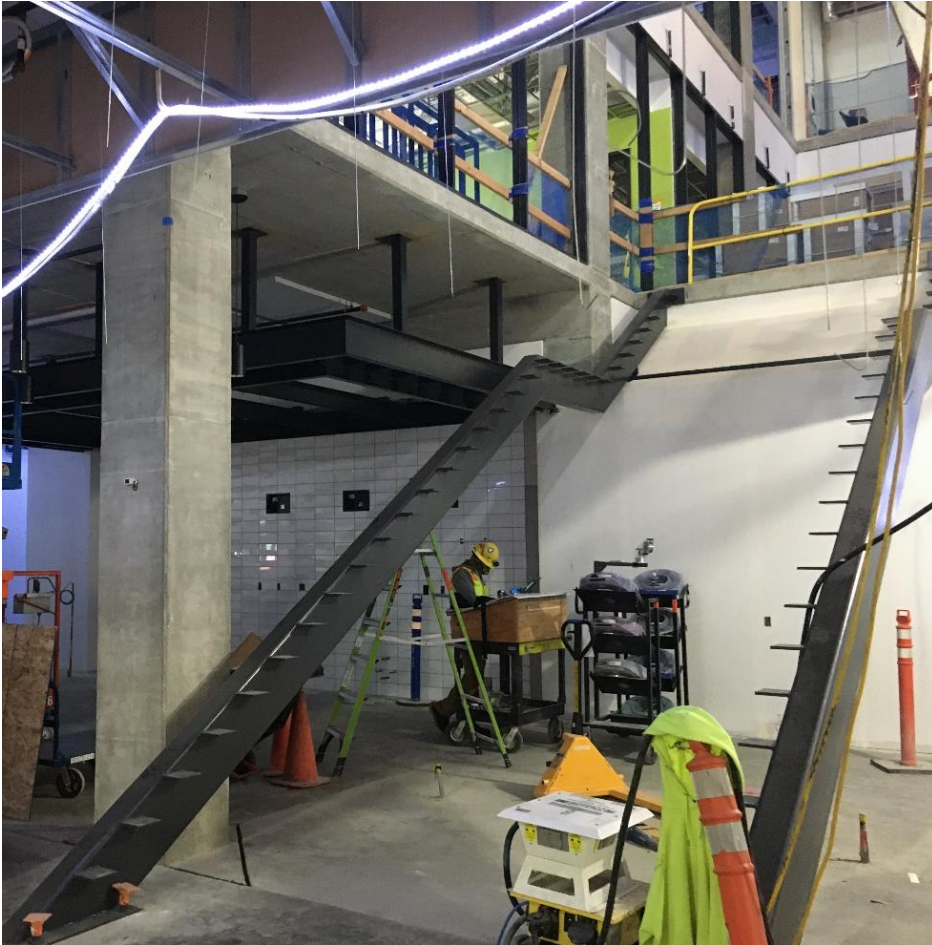


Atrium

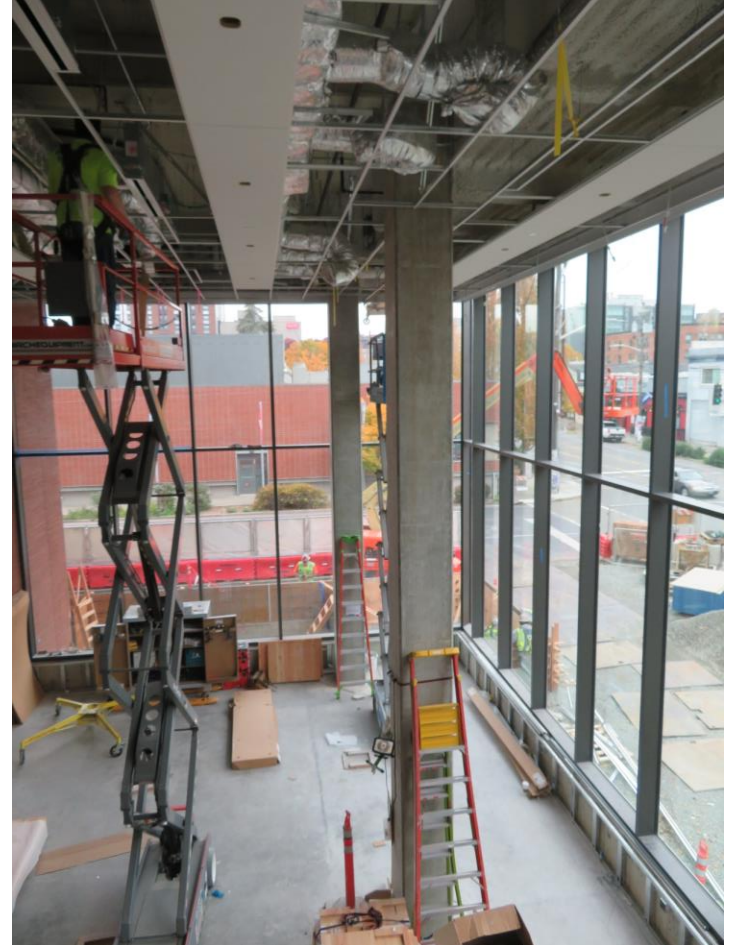


Radio Station

Sinegal CSI Construction Photos

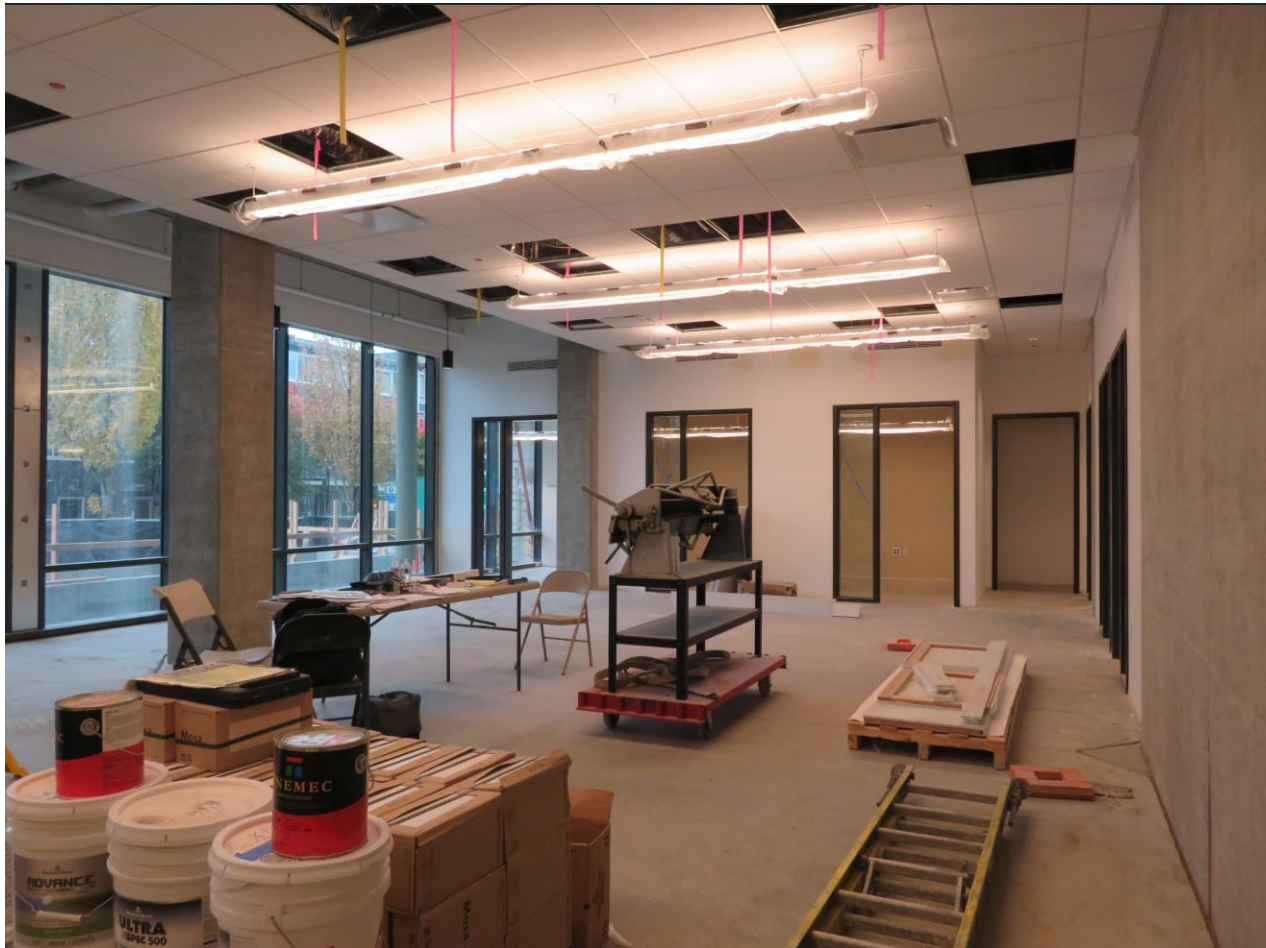


Main Stair at Café



Maker Space

Sinegal CSI Construction Photos



Center for Community Engagement Space

Sinegal CSI Construction Photos



First Floor Classroom

Sinegal CSI Construction Photos



Teaching Lab

Sinegal CSI Construction Photos



Research Lab



Conclusion

Questions or Comments

Thank You!