



Seattle Children's Standing Advisory Committee

MIMP & Growth Updates

July 14, 2021



Seattle Children's®

Patrick



# 2020 MIMP Annual Report Highlights

## 2020 MIMP Highlights

---



- 0 new square feet constructed in 2020
- Forest B construction continues, estimated completion by Spring 2022 (328,917 square feet committed in MIMP Phase 2)
- Continuing to invest and design programs to meet our Commute Trip Reduction goal -- 30% drive alone rate by 2030.

Building	Square Feet
2010 SQFT	~860,000
Forest A	327,856
Forest B	328,917
SQFT Remaining for Future Development	598,076
Total SQFT Allowed in MIMP	2.125 M

## 2020 MIMP Highlights – Projects Within Existing Space

---

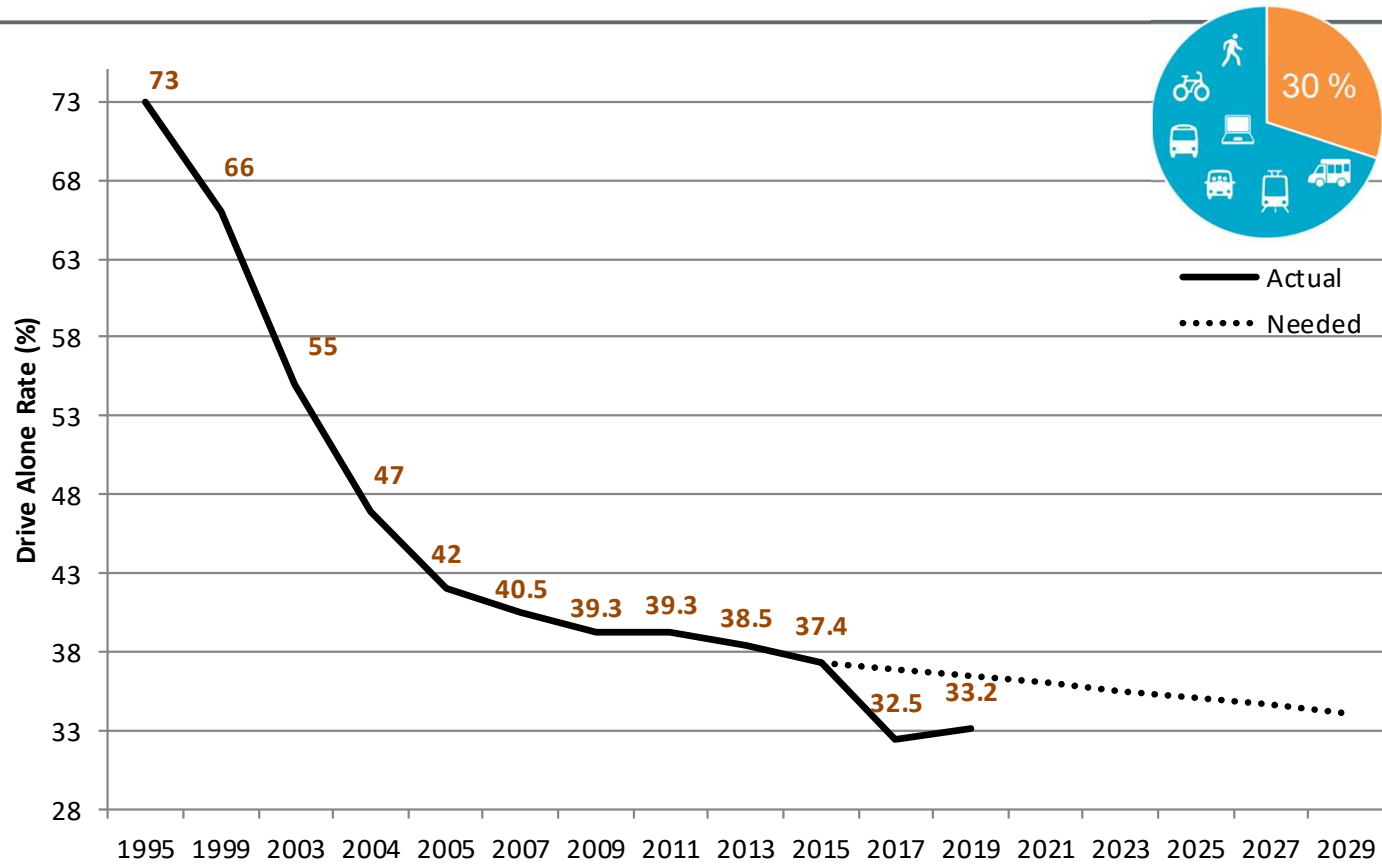


Focused on replacement of infrastructure and aging equipment, such as:

- Ocean 8 Research Integration Hub
- Air Handling Units
- Radiology Equipment
- Frog Elevator Modernization

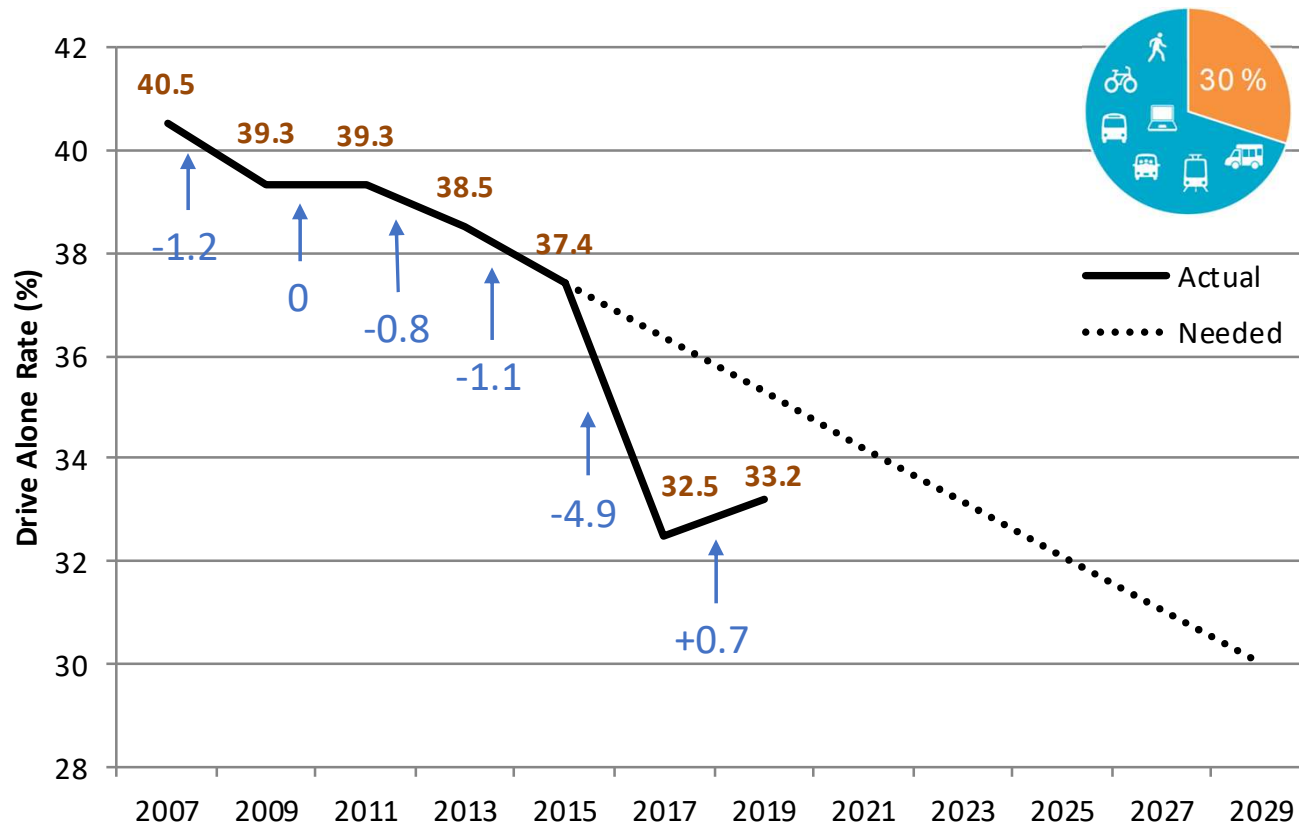
*\*For specific projects, see Annual Report*

# Hospital - Historic Drive Alone Rates



# Transportation – Performance to MIMP

## Defined Drive Alone Goal of 30% by 2030





## Link Light Rail and Metro Transit Improvements

---

### **North Link Extensions in October 2021**

- Brooklyn Station in U-District, Roosevelt Station, Northgate Station

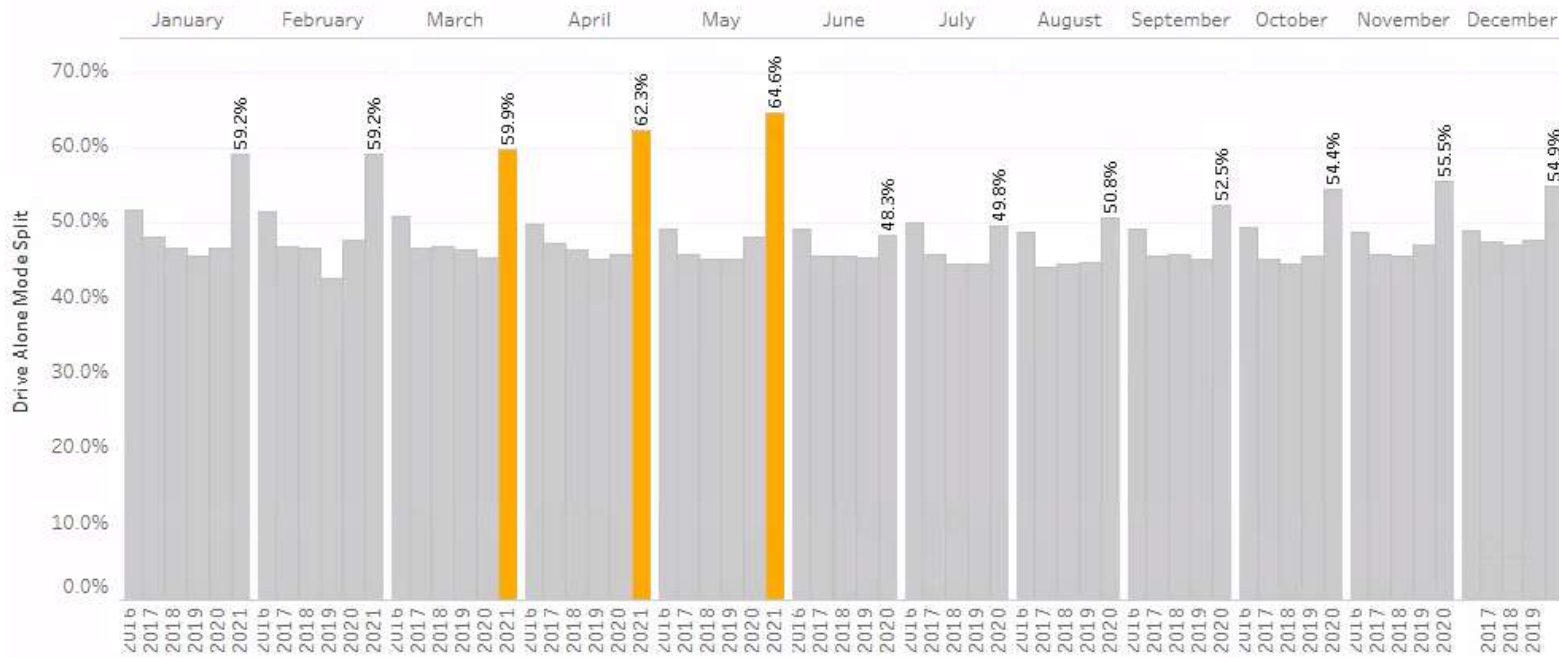
### **Metro Transit North Link Restructure in October 2021**

- Significant change and investments around NE Seattle
- Revised route 31/32 will significantly improve transit to Hospital
  - First time in nearly 10 years Children's/Laurelhurst to have direct service to from the U-District
  - Represents productive partnership with Metro, UW and Children's
  - Peak service approximately every 8 minutes at peak
  - Connects to Brooklyn station for regional connectivity
  - Children's working with Metro Transit to refresh transit stop loop on campus on NE 45th

# COVID-19 Impacts to Drive Alone Rate



Hospital SOV Rate for CTR Affected Workforce





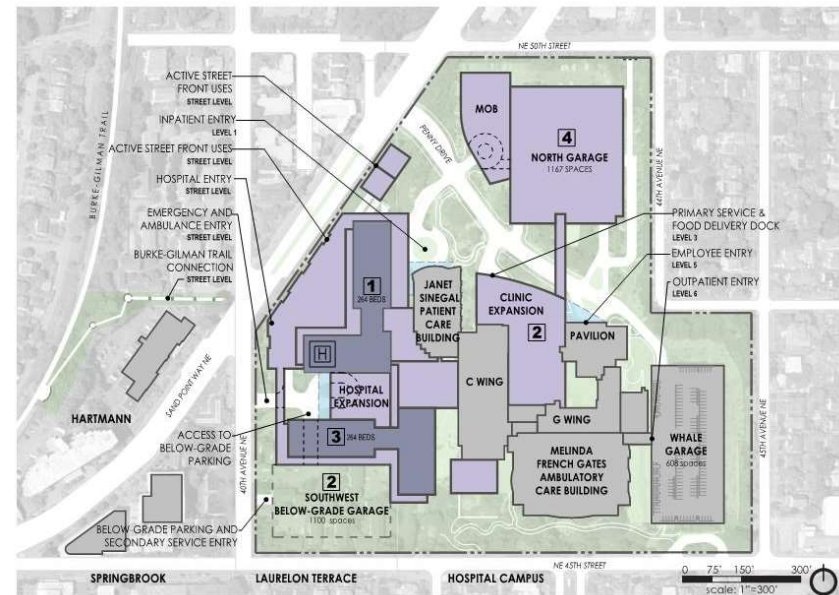


# Growth Updates

# Seattle Children's MIMP SQFT Approved in 2010



- Major elements envisioned:
  - Two Inpatient Bed Towers
  - Acute Care Expansion
  - Clinical/Surgical Expansion
  - Administrative Expansion
  - Parking
- To meet our most pressing patient needs, Seattle Children's puts projects forward one at a time through the MUP process with the City



# Seattle Children's is Growing to Meet the Needs of Patients and Families in the Region

---



- With over 45 regional and outreach clinics, and over 60 pediatric specialties, Seattle Children's serves the largest geographic service area of any children's hospital in the country – Washington, Alaska, Montana and Idaho (WAMI).
- Seattle Children's continues to experience growing demand from patients who need the unique and highly specialized services we provide.
- Meeting the needs of the children we serve requires physical growth in many different areas.

## Strategic Growth Areas:

---

- Community Health (Odessa Brown Children's Clinic - Othello)
- Acute Care (Building Care)
- Outpatient Mental Health Care (Luna)
- Surgical Capacity
- Inpatient Beds

# Most Pressing Growth Priorities

---



## **Inpatient Beds:**

- Seattle Children's is regularly **exceeding target occupancy** for our acute care beds.
- Growth at Seattle Children's is due to **increasing chronic conditions among children** and the **closure of small inpatient pediatric units** in community hospitals.
- Complex care, and advances in treatment allowing children to live longer, have led to **increases in length of patient stays** in the hospital requiring more inpatient bed capacity.

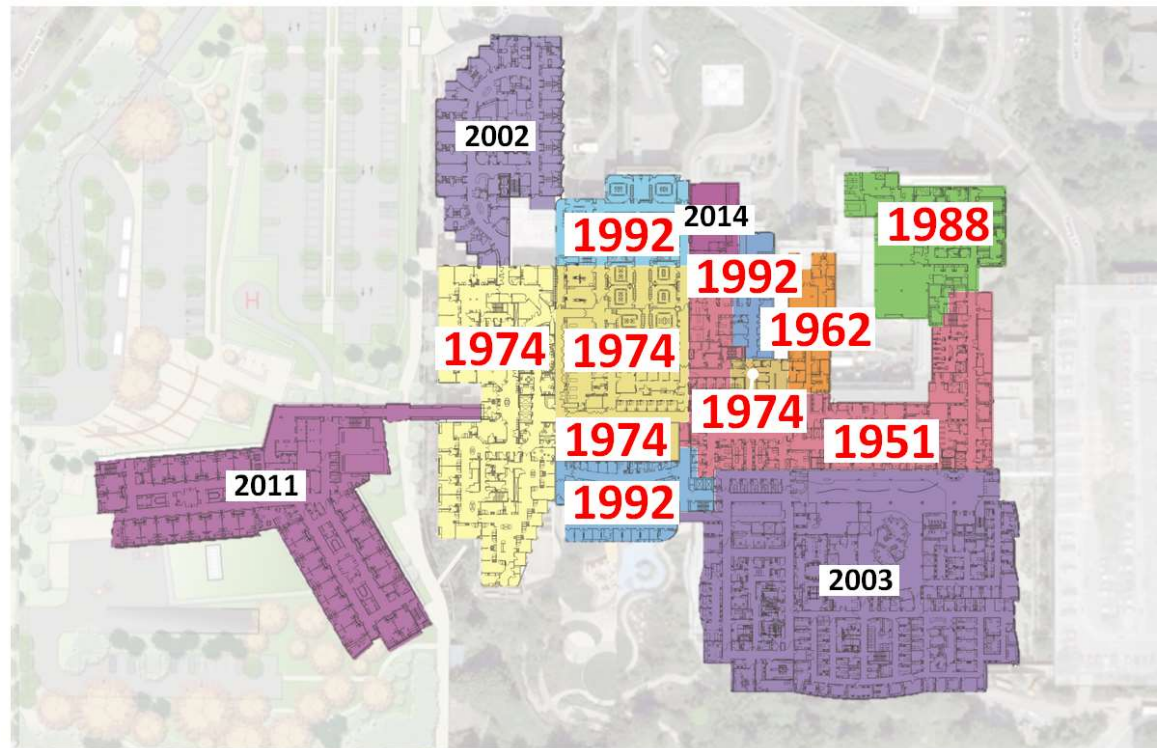
## **Surgical Capacity:**

- Over the last several years, **Operating Rooms** at the Bellevue Surgery Center and the Laurelhurst campus are **running at near maximum capacity**.
- Even with recent operational improvements within our existing facilities, **Seattle Children's does not have the capacity it needs to care for our surgical patients**.
- We are the **only pediatric complex care provider in the entire WAMI region**, it is critical that we have capacity to treat the children who need us.

# Opportunities of Growth



- Modernize our facilities to support new technology and new models of care.
- Necessary replacement of buildings and infrastructure.
- Prioritizing the highest patient needs in our building projects.



# Seattle Children's Building Projects

---



## Building projects under construction:

- **Community Health: Odessa Brown Children's Clinic Othello** – Opening in 2022 (outside MIMP boundaries)
- **Acute Care: Building Care** – Opening in Spring 2022; Permanent helipad will open around the same time
- **Outpatient Mental Health Care: Project Luna** – Opening in 2022 (outside MIMP boundaries)

## Projects currently under consideration:

- **Inpatient Beds: Forest C** – MUP process to begin this fall
- **Surgical Capacity Expansion: Project Copper** – MUP paused



# Odessa Brown Children's Clinic – Othello

---



# Forest B (Building Care) - Rendering





# Project Luna – Autism & Outpatient Behavioral Health

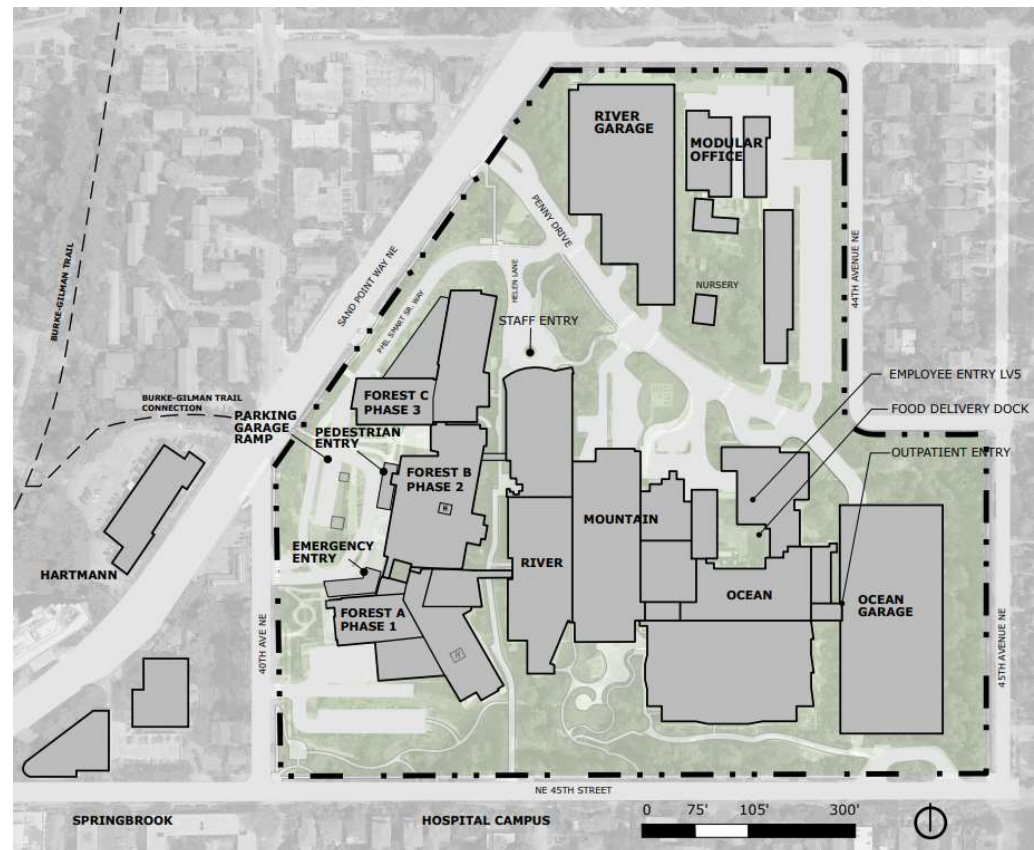


*Existing 70<sup>th</sup> and Sand Point Way building, lobby and playground*

# Next Steps



- Fall 2021 – SAC meetings to review Forest C plans
- Spring 2022 – Forest B (Building Care) Opening
- We will continue to update the SAC on any other future development plans within the MIMP as our plans are confirmed







Any Questions?

Olivia



**Seattle Children's**<sup>®</sup>  
HOSPITAL • RESEARCH • FOUNDATION

Hope. Care. Cure.<sup>™</sup>