



North Seattle College Major Institute Master Plan 2018-2019

**Major Institution Master Plan
Annual Report**
North Seattle College

Reporting Period:
July 1, 2018 – June 30, 2019

I. Introduction

A. Name of Major Institution: North Seattle College

B. Reporting Period: July 1, 2018 – June 30, 2019

C. Major Institution Contact Information:

Terence Hsiao

Vice President of Administrative Services (interim)

9600 College Way

Seattle WA 98103

Phone: (206) 934-3628

Fax: (206) 934-0068

E-mail: terence.hsiao@seattlecolleges.edu

D. Master Plan Adoption Date and Date of Any Subsequent Amendments:

Master Plan Adoption Date: January 13, 1995

Amendments: Removal of Expiration Date – Minor – August 19, 2010

II. Progress in Meeting Master Plan Conditions

A. Provide a general overview of progress made in meeting the goal and conditions of the approved Master Plan.

North Seattle College (NSC) has met the major goals and conditions of the 1995 Master Plan as described in this report.

The Physical Education Building, now called the Roy Flores Wellness Center, was constructed, and occupied in 1995.

The Multi-Purpose Building, now called the Peter Ku Education Building, was constructed, and occupied in 1999.

The Technology Building was renovated and expanded in 2011 to create the Opportunity Center for Education and Employment.

All additional site elements such as parking, trail system and landscaping have been completed. Due to the designation of a wetland in the area, budget constraints and declining enrollment, the athletic field was not constructed as planned. Instead, the community P-Patch is now located in the southwest corner of this area.

NSC has expanded and improved the Transportation Management Program (TMP) with the addition of a Program Specialist 3 (Employee Transportation Coordinator) and is actively working to reduce the SOV rate while preparing for

the increased public parking demand and Northgate Link Light Rail and associated pedestrian skybridge. These preparations include wayfinding, researching and procuring a parking access control system for managing increased public demand, increased bicycle safety and security programs, and parking fee increases.

NSC also incentivizes and encourages the use of alternative modes of travel, provides subsidized bus passes to students and staff, and has 4 electric car charging stations on campus.

B. List each condition and provide a brief narrative statement about the progress made towards compliance:

1. Replace the Hearing Examiner's Recommendation with the following:

Condition 1.a. of the Director's Analysis and Recommendation is augmented as follows: To monitor the effectiveness of the TMP in the first two years, the College shall collect information on a quarterly basis to include in its annual report. In addition to monitoring information required in DCLU Director's Rule 2-94, the following information shall be provided:

1. The number of transit passes sold for peak and non-peak hour use.
 - 84 transit passes sold
2. The number of carpool permits sold and the number of carpoolers
 - 23 quarterly carpool permits
 - 53 Carpoolers
3. The number of quarterly SOV parking permits sold
 - 180 permits sold

In addition, the College shall, at the third week of each academic quarter, compile information on parking on campus. The parking utilization survey shall occur at the METRO AM peak hour (8-9AM)

as well as the College peak hour (10 -11AM) and shall include the following information: The number of vehicles parked on the campus in each category of spaces: carpool, vanpool, visitor and SOV.

- The College has been consistently conducting the utilization survey, survey results indicate that current on campus parking capacity exceeds demand.

Student carpools parking is available in the West Lot, along with faculty and staff when arriving between 7-9am. After 9am the lot is open to non-carpoolers.

DCLU may continue to require the above information on a schedule to be established by the Director after the first two years, if the Director determines it is needed.

Summary: NSC continues to comply with monitoring the effectiveness of the TMP as described in this condition including monitoring the number of transit passes sold, number of carpool permits sold, number of SOV parking permits sold and the number of vehicles parked on the campus in each category of spaces: carpool, vanpool, visitor and SOV.

2. The required annual report from NSC to the City shall also be transmitted to the Licton Springs Community Council and the College shall invite the Community Council to meet and discuss the report within a reasonable time after the report is published.

Summary: NSC has re-established the Standing Advisory Committee (SAC) per the Major Institution Master Plan requirements. The Annual Report will be reviewed with the SAC in an open public

meeting at the beginning of 2021. A copy of the report will also be provided to the Licton Springs Community Council who will be invited to attend the SAC public meeting.

3. At the Director's discretion, DCLU may require supplemental traffic studies for any project initiated after 1999.

Summary: No supplemental traffic studies have been requested.

4. As an additional TMP option to be considered no sooner than 1999, if satisfactory progress toward the SOV goal and the objective of reducing off-campus parking by NSC students is not evident, DCLU and SED in consultation with NSC may require that students be charged for parking permits, unless they can demonstrate that they are commuting by means other than SOV. Permit fees could be adjusted for students from low-income households or with special needs.

Summary: NSC charges SOV parking fees for employees, staff and students utilizing on campus parking, with a review of fees underway and proposed. Regular and consistent enforcement has been increased and parking policies updated and communicated to commuters. These educational efforts have had an impact resulting in increased permit sales and awareness of commuting options and rules.

5. The goals of the TMP are modified to provide that the intermediate goal for SOV use for 1997 be set at 58%.

Summary: The 2019 CTR Survey of college employees determined that the faculty/staff SOV rate was 67.7%. The 2019 Student

Transportation Survey determined that the peak period student SOV rate was 47.7%. This resulted in an overall peak period SOV rate of 47.2% which exceeds the 55.2 SOV rate TMP goal for 1999.

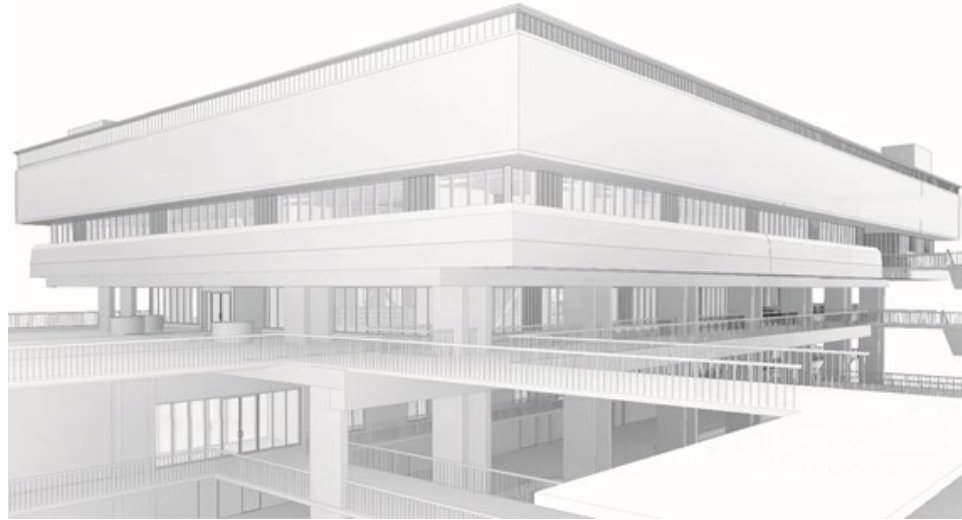
6. The NSC Major Institution Master Plan is approved for 15 years from the effective date of City Council action on this decision. This approval includes the two unfunded projects shown in the site plan and described in the Master Plan as the International Education Center and the Instructional Computer Center, provided they shall be sited so as not to intrude into the wetland area indicated on Figure 12. In addition, any parking spaces lost due to construction of these buildings shall be replaced in a location which adjoins existing parking.

Summary: The International Education Center and the Instructional Computer Center buildings have not been constructed due to lack of funding. However, the renovation and expansion of the Technology building into the OCEE facility impinged upon the space originally intended for the Instructional Computer Center.

III. Major Institution Development Activity Initiated or Under Construction Within the MIO Boundary During the Reporting Period

A. List and Describe Development Activity Initiated or Under Construction (Non-Leased Activity)

1. Name of Building and Address: North Seattle College - Library Building 9600 College Way Seattle WA 98103



Artist Rendering; Library Building

2. Description of Project: The Library Building Renovation Project will renovate the existing Library Building to extend the life of the building for 50 years. Floors in four of the tiered lecture halls will be leveled to create flexible classroom space that can accommodate multiple programs and flexible learning environments. One tiered space will be retained for use as a lecture hall for larger assemblies. Informal study lounges will be located immediately adjacent to these spaces. Mechanical, electrical, and structural systems will be updated and/or replaced to meet life safety and code requirements.

3. Proposed Use: The Library Building Renovation Project will transform the existing Library into a Learning Commons that provides contemporary library services, consolidates digital resources, and supports collaborative learning and online, web-enhanced, and traditional education.

4. Size – Gross Square Footage: 58,177

5. Date Commenced (if still Under Construction) or Completed: Design work commenced in 2019 and construction funding is anticipated for the 21-23 biennium.

B. Major Institution Leasing Activity to Non-Major Institution Uses During Reporting Period

1. Name of Building and Address:

Opportunity Center for Employment and Opportunity
9600 College Way N.
Seattle, WA 98103

2. Proposed Use:

The premises is used by the DSHS, ESD and/or other state agencies for the purposes of integrated service delivery to job seekers, social service customers and college students.

3. Size – Gross Square Footage of Lease: 20,111

IV. Major Institution Development Activity Outside but within 2,500 Feet of the MIO District Boundary

Summary: No major institution development activity has occurred outside but within 2,500 feet of the MIO District Boundary. However, NSC has been working with SDOT to grant easements for the construction of the Northgate Pedestrian Bridge which lands on the NSC campus.

V. Progress in Meeting Transportation Management Program (TMP) Goals and Objectives

A. Provide a general overview of progress made in achieving the goals and objectives contained in the TMP towards the reduction of single-occupant vehicle use by major institution employees, staff and/or

students.

Summary: The TMP goals and objectives for reducing single occupancy vehicle use have all been attained. The overall peak period SOV rate of 47.2% is 8% below the 55.2% SOV rate TMP goal for 1999.

B. List each goal and objective and provide a brief narrative statement about the progress made towards compliance.

Standard Implementation Requirements include:

1. Periodic Promotional Events

NSC has and will continue to hold events designed to educate and inform students, faculty, and staff of the available options and HOV incentives. Such events include: Bike to Work Month and Day, Earth Day, Winterfest, new student, and employee orientation, partnering with SDOT, King County Metro, Sound Transit, King County Mobility Coalition, and others to provide information tables at campus and other events with a heavy focus on Link Light Rail, supporting the Pedestrian Bridge Construction Team. Increased campus messaging to ensure all commuters are aware of resources and assistance for trip planning via NSC Transportation Office; vanpools, carpools, and all other alternative modes encouraged, including free parking benefits for those commuting 3 or more times per week. Includes presentations/Tabling for ESL Orientation, Earth Day, and other upcoming events with speakers invited from DSHS, and King County specializing in assisting ESL demographics in any language.

2. Commuter Information Center

NSC continues to maintain a permanent, highly visible, on site display of information on available commute modes located in the Security Office and available to the public between the hours of 8 a.m. to 4 p.m. Information on biking conveniences (bike repair, showers, and lockers) ridesharing (carpools, vanpools) Metro Transit routes, ride match and other information related to transportation are provided.

King County Metro bus information is located on the first floor of the College Center, throughout the campus, and on the NSC Transportation web page <https://northseattle.edu/transportation>.

4. Ride Match Service -

NSC has partnered with Zimride by Enterprise, a ride share using social networks to help connect riders with similar interests and compatibilities. Students are encouraged to utilize the KC Metro match service under the North Seattle College group.

5. Student, Faculty, and Staff Mode Split Survey

NSC continues to conduct a travel-mode survey every two years to determine travel behaviors, determine mode splits, and monitor the effectiveness of the TMP (surveys conducted after July 1, 2019).

6. Site Improvements to provide a total of 267 bicycle parking spaces

NSC currently has adequate capacity to meet the needs of cyclist commuters. There are 23 bike racks with a total capacity for 226 bicycles distributed across campus including the parking garage, with higher capacity located in higher demand areas. NSC has acquired 27 bike lockers with capacity for 54 bicycles. There are 23 bike racks with a total capacity for 226 bicycles distributed across campus including the parking garage, with higher capacity located in higher demand areas. Observational data demonstrates adequate capacity and occupancy rates do not exceed demand at any location. Since start of Transportation Coordinator in December 2018, raw occupancy data collection is underway as staffing permits and will drive new proposals for increased biking incentives, more secure facilities (funding dependent), and promotional activities. Expected plan and budgeting completion is 6/30/2019 with implementation of plan findings 4th Calendar Quarter 2019.

7. Reporting

NSC collects information quarterly on the number of carpools, number of ORCA cards distributed and number of faculty and staff who bike to work. The CTR Employer Survey and the Employer Annual Reports are submitted every two years to WSDOT. The Student Transportation Survey is conducted yearly.

B. Discretionary Program Elements include:

1. Parking Supply (Original Target 1,689) - NSC has 1287 available parking spaces on campus which include ADA, carpool and EV spaces (excludes construction laydown area). The target number of parking spaces was reduced due to environmental impacts on a planned parking area and the addition of a Child Care Facility. NSC will lose an additional 32 parking spaces to accommodate the westerly approach of the Northgate Pedestrian Bridge and 41 spaces for apprenticeship programs. It is anticipated that the construction of the Northgate Pedestrian Bridge in conjunction with the opening of the Northgate Link Light Rail Station will encourage transit ridership to the NSC campus.

NSC will increase parking consistent with TMP goals and demand driven by the construction of new buildings.

2. Discount Carpool and Vanpool Parking

NSC has and continues to charge registered students, faculty and staff carpools and vanpools a fee that is more than 50% less than the cost of SOV parking.

3. Preferential Carpool Parking

NSC continues to provide garage parking spaces for use by faculty and staff carpools from 7 a.m. to 9 p.m. Students can park in the garage after 5p.m. with a parking permit.

4. Transit Subsidy

NSC continues to subsidize the cost of transit for employees and students. An increase to the transit subsidy for Student ORCA cards was implemented at the beginning of Fall Quarter 2017. Student ORCA cards still cost \$125 but the value of the card has increased to \$250 (\$125 subsidy).

5. SOV Parking Rates

NSC charges employees and staff parking rates for SOV set at levels for which the parking fee plus the estimated cost to SOV users of operating their vehicles is higher than the cost of commuting by transit. These rates are currently under review.

6. Shuttle (To Northgate Transit Center)

NSC has not implemented this program element due to lack of funding. Bus route #26 provides a connection to the campus and the Pedestrian Skybridge will meet this need Fall of 2021.

Artist Rendering; Pedestrian Sky Bridge North Campus



7. Guaranteed Ride Home Program

NSC continues to provide reimbursement for emergency travel home to students, faculty and staff that are using transit or carpooling.

8. Showers/Locker Room Facilities

NSC provides on-site facilities for bicycle and walking commuters to shower and change clothes at the Wellness Center. This information is advertised on the NSC Transportation page of the website. In addition, campus-wide emails are sent quarterly with information regarding biking conveniences and access to showers and locker rooms.

9. Residential Parking Zone (RPZ)

The Residential Parking Zone program was implemented in the mid 1990's and is currently funded by NSC. 10. Periodic Free Parking for Non-SOV Commuters - Full-time employees and staff who commute 50% or more, or three days out of the week by ORCA, bike, walk, and carpool get designated two days of free parking per week.

10. Summary

The following actions in support of Commute Trip Reduction and in preparation for the Link Light Rail and associated skybridge are complete or underway:

- a. Renewal of contract for (4) EV charging stations with no charge to user
- b. Established partnership with King County Mobility Coalition to assist diverse demographics seeking alternative modes
- c. Review and analysis of all routes and stops serving North Seattle College from all agencies, focusing on trips Seattle Metro north based on student demographic. Met with KC Metro regarding route changes post Skybridge opening, requesting route 41 continue to College (new proposal does not travel south of 105th on College Way).

- i. Passed incremental public rate increase in anticipation of increased demand from Skybridge (\$6 per day FY2019, \$10 proposed 21)
 - ii. Detailed data collection of occupancy rates, traffic flow, highest demand areas
- d. Promoted leveraging of technology to manage parking, plan trips and secure rides (KC Metro Trip Planner, FindARide, Google Maps)