



Ben Bridge Street Clock

Landmarks Preservation Board - Certificate of Approval Packet 1
May 13, 2021

Table of Contents

Project Summary.....	2
Context and Site Relocation.....	3
Photographic Survey.....	4
Proposed Location.....	7
Examples of Other Street Clocks Relocated.....	8



PROJECT SUMMARY

Name: Ben Bridge Street Clock

Address: 409 Pike Street, Seattle, Wa 98109

Date of Construction: 1928-29

History:

The Ben Bridge Street Clock is a cast iron Joseph Mayor four dial street clock, installed in 1928 adjacent to the first Ben Bridge Jewelers store located at the Fourth and Pike Building (former Liggett Building).

One hundred Mayer's street clocks were produced between 1900 and 1930, forty-six to Seattle customers. The city had so many street clocks that it was known as "the city of clocks." Although not the J. Mayer Company built all clocks, the street with the most street clocks was Pike Street.

Today, only the Ben Bridge clock remains, not far away from its original location, and still belongs to the original owner. The clock was restored in 1980 and is one of the nine Seattle street clocks part of the Landmarks Street Clocks Thematic Nomination (1981).

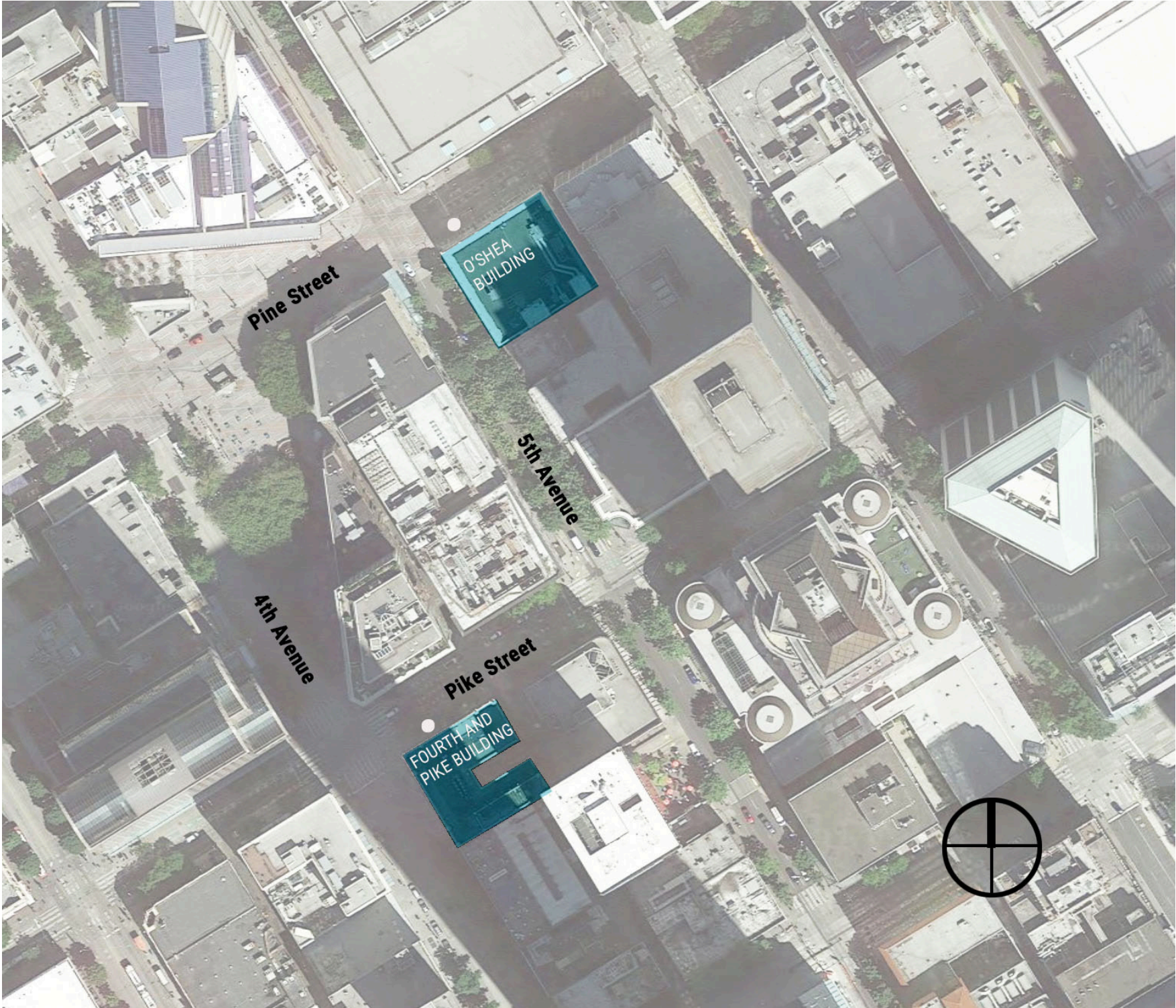
Project Summary:

This proposal is to relocate the Ben Bridge Street Clock from the current location at the corner of 4th Ave. and Pike St., to the new Ben Bridge Jeweler Flagship Store at 5th Ave. and Pine St.

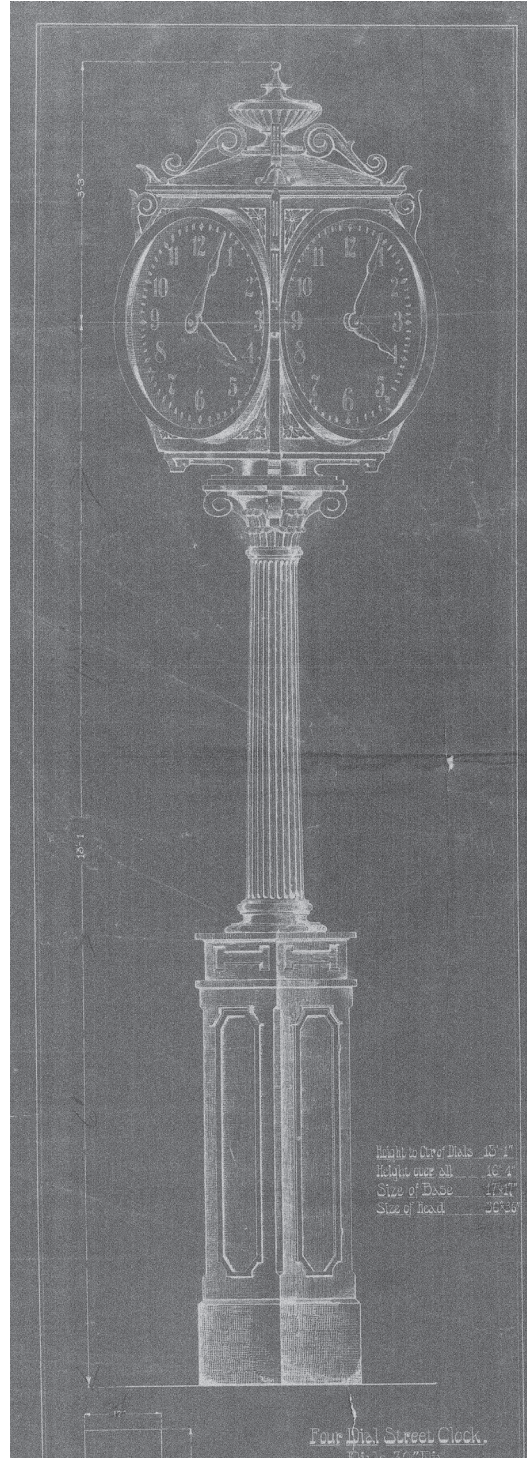


CA. 1930 - PIKE STREET LOOKING NORTHEAST

CONTEXT AND SITE RELOCATION



HISTORIC PHOTOS - BEN BRIDGE STREET CLOCK



**1912 - DRAWING OF A JOSEPH MAYER
FOUR DIAL STREET CLOCK**



1980 - CLOCK BEFORE BEING RESTORED

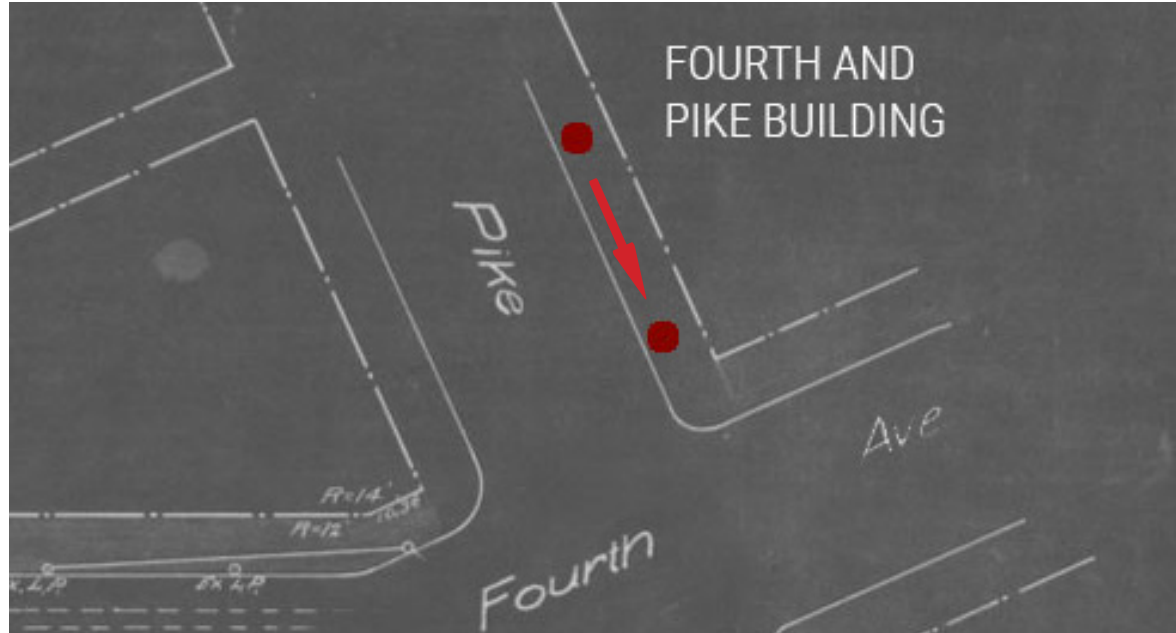


2001 - BEN BRIDGE STREET CLOCK



BEN BRIDGE STREET CLOCK TODAY

HISTORIC PHOTOS - FOURTH AND PIKE BUILDING



THE BEN BRIDGE STREET CLOCK WAS MOVED FROM ITS ORIGINAL LOCATION 409 PIKE ST, TO 401 PIKE ST. IN THE 1980'S



1937 - ORIGINAL LOCATION OF THE BEN BRIDGE STREET CLOCK



1950 - ORIGINAL LOCATION OF THE BEN BRIDGE STREET CLOCK



1980s - SECOND LOCATION OF THE CLOCK AT THE PROMINENT CORNER RETAIL SPACE

HISTORIC AND CURRENT - O'SHEA BUILDING



1937 - HARDY & CO. JEWELERS STREET CLOCK ADJACENT TO THEIR STORE



2019 - CONTEMPORARY STREET CLOCK 'QUESTION MARK CLOCK', INSTALLED IN 1990 IN CONJUNCTION WITH THE METRO BUS TUNNEL

PROPOSED LOCATION - O'SHEA BUILDING



2021 - PROPOSED LOCATION OF THE BEN BRIDGE STREET CLOCK

EXAMPLES OF RECENT STREET CLOCK RELOCATION



2012 - PHOTO OF THE CARROLL'S JEWELRY STREET CLOCK DURING RELOCATION TO THE MOHAI MUSEUM ENTRANCE. THE CLOCK HAS BEEN RELOCATED AT LEAST THREE TIMES. THE CLOCK ORIGINAL LOCATION WAS ADJACENT TO THE CARROLL'S JEWELRY IN THE JOSHUA GREEN BUILDING UNTIL 2008.



2020 - BENTON JEWELRY STREET CLOCK DURING THE MOST RECENT REMOVAL ON LAURELHURST NEIGHBORHOOD FOR FUTURE RELOCATION. THE ORIGINAL LOCATION OF THE CLOCK WAS ADJACENT TO THE ORIGINAL BENTON JEWELRY IN UNIVERSITY WAY.