



Ben Bridge Street Clock

Landmarks Preservation Board - Certificate of Approval Briefing Packet 2
January 21, 2022

PROJECT SUMMARY

Name: Ben Bridge Street Clock

Address: 409 Pike Street, Seattle, Wa 98109

Date of Construction: 1928-29

History:

The Ben Bridge Street Clock is a cast iron Joseph Mayer four dial street clock, installed in 1928 adjacent to the first Ben Bridge Jewelers store located at the Fourth and Pike Building (former Liggett Building).

One hundred Mayer's street clocks were produced between 1900 and 1930, forty-six to Seattle customers. Seattle once had so many street clocks that it was known as "the city of clocks."

Today, only the historic Ben Bridge clock remains, not far away from its original location, and still belongs to the original owner. The clock was restored in 1980 and is one of the nine Seattle street clocks part of the Landmarks Street Clocks Thematic Nomination (1981).

Project Summary:

This proposal is to relocate the Ben Bridge Street Clock from the current location at the corner of 4th Ave. and Pike St., to the new Ben Bridge Jeweler Flagship Store at 5th Ave. and Pine St.

We presented this project to the ARC/LPB on June 11, 2021.

The following are the comments / questions that the ARC had about this project, along with our responses:

1. Provide a description of the method of removal, storage, transport, and reinstallation of the clock, including protection measures.

Response: Please see the work letter from Artech on the following page.

2. Provide construction details and a site plan for the installation of the Ben Bridge Clock.

Response: Please see the civil engineering plans and structural detail on the following pages.

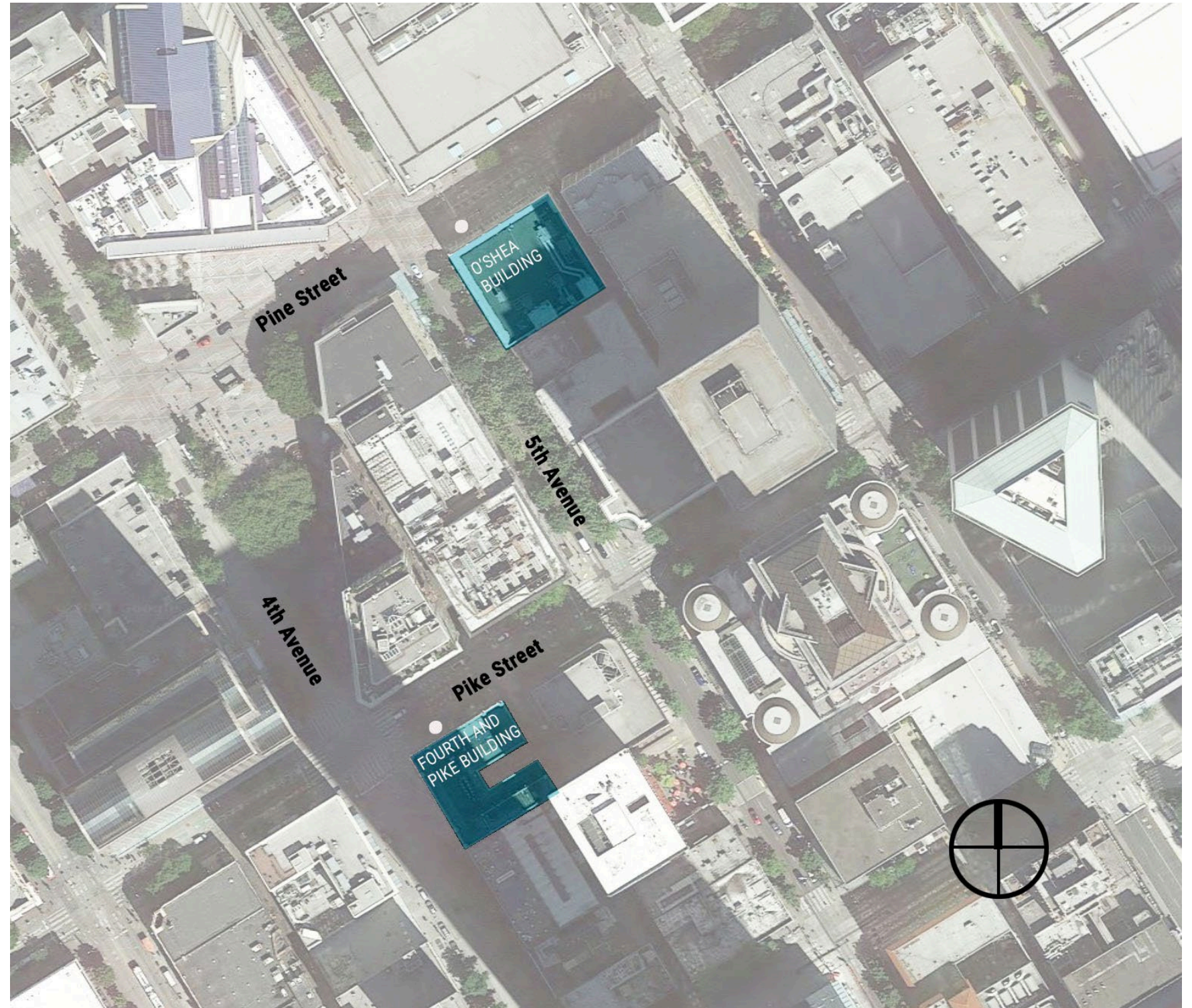
3. What is happening to the clock that is currently located at 5th and Pine.

Response: The "Mark Whipple" clock will be relocated and installed at the 4th and Pike, where the Ben Bridge clock is currently located.

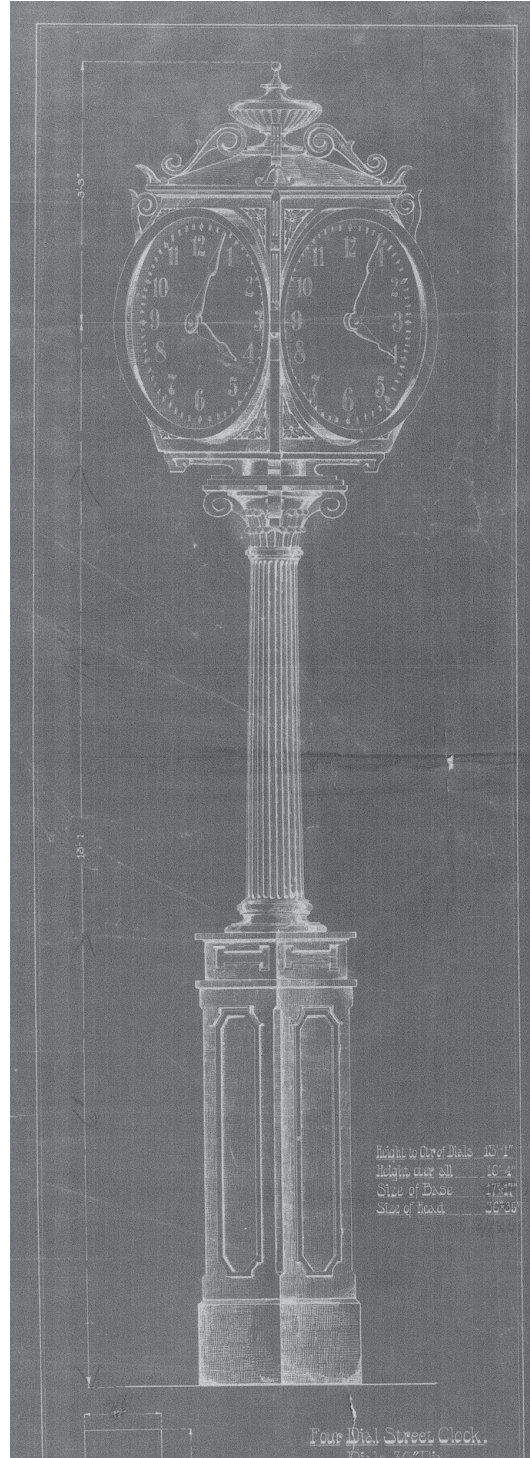


CA. 1930 - PIKE STREET LOOKING NORTHEAST

Site Relocation Plan



Photos of Ben Bridge Clock



1912 - DRAWING OF A JOSEPH MAYER
FOUR DIAL STREET CLOCK



1980 - CLOCK BEFORE BEING RESTORED

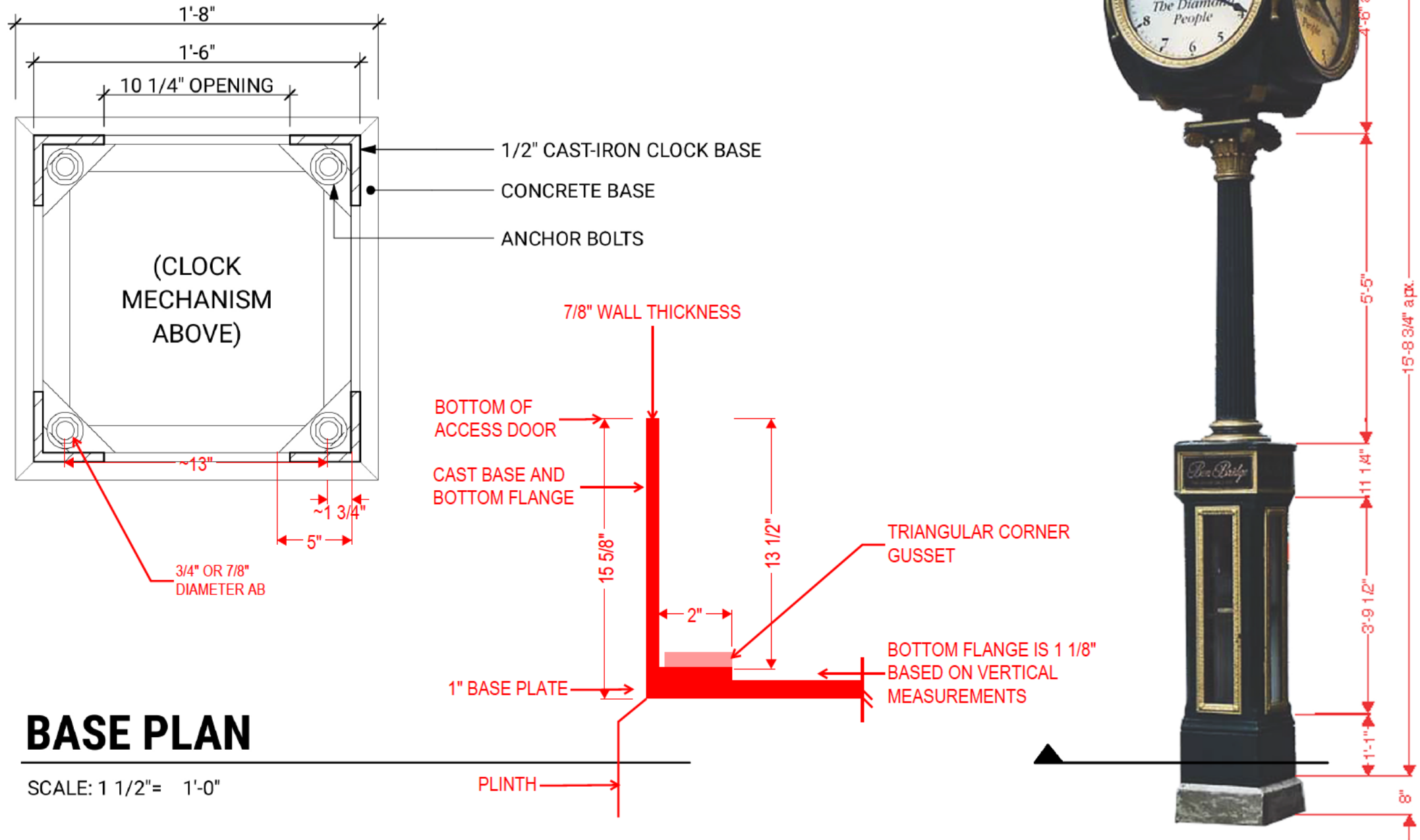


2001 - BEN BRIDGE STREET CLOCK



BEN BRIDGE STREET CLOCK TODAY

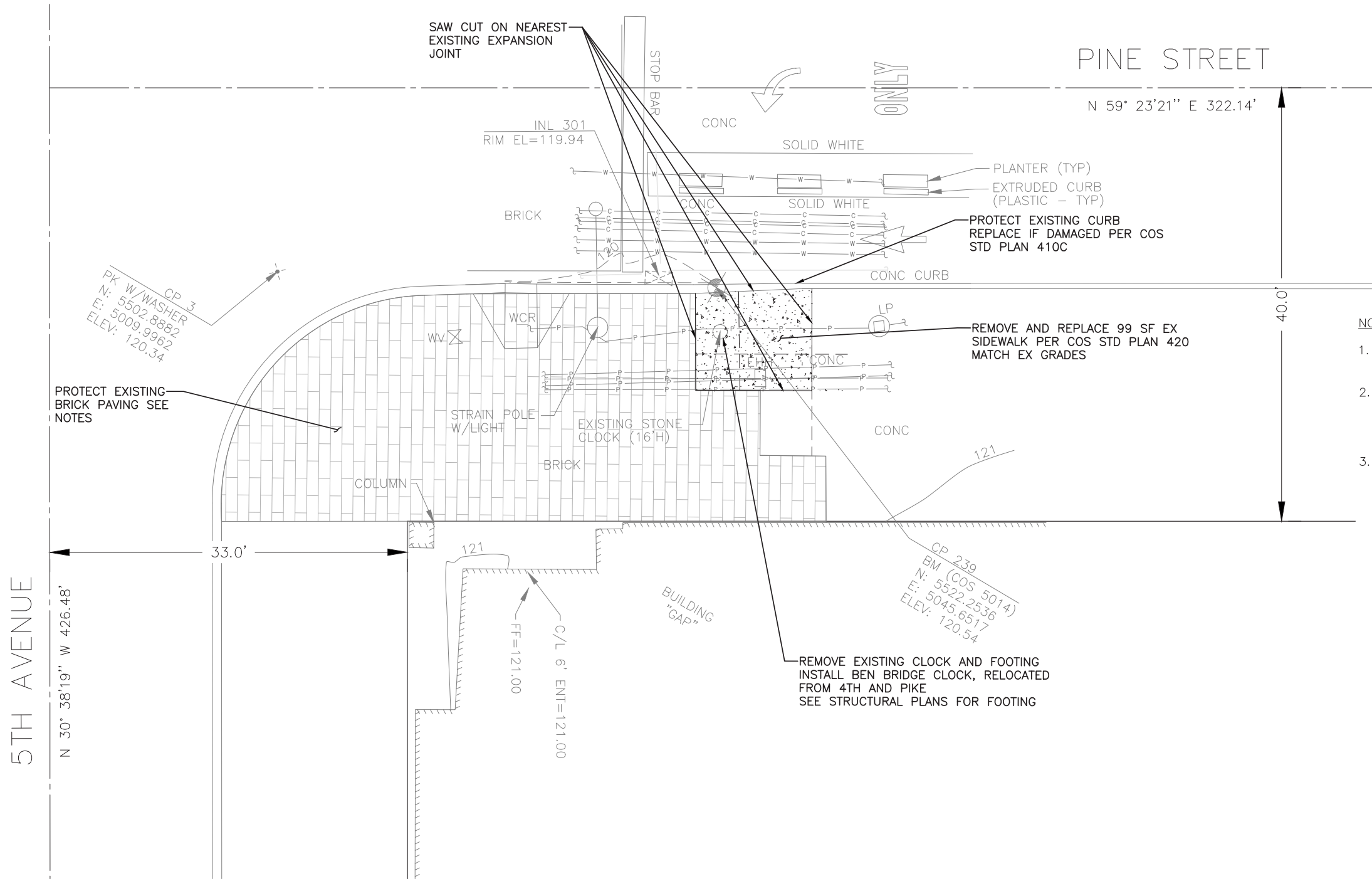
As-Built Field Dimensions



1937 - HARDY & CO. JE

) IN

Site Plan for Relocation to 5th and Pine Street



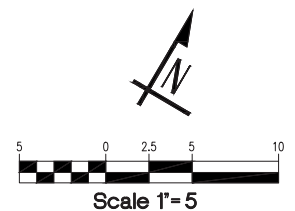
LEGEND

- EXISTING BRICK
- CONCRETE PAVEMENT

NOTES:

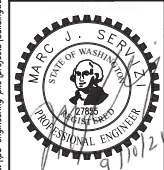
1. ROW DIMENSIONS PER KING COUNTY ASSESSOR MAP.
2. PROTECT ALL EXISTING UTILITIES (WATER METERS, WATER SERVICES, GAS MAIN, GAS SERVICES, SIDE SEWERS, POWER CONDUITS, AND COMMUNICATION CABLES).
3. IF DISTURBANCE AT EXISTING COLORED BRICK IS NECESSARY, CAREFULLY REMOVE, AND PROTECT BRICK. REINSTALL TO MATCH EXISTING CONDITIONS. PREPARE SUBGRADE PER COS STD PLAN 420.

INSTALL INLET PROTECTION IN ALL INLETS W/IN 300' DOWNSTREAM OF PROJECT AND ALONG HAUL ROUTE



CALL 48 HOURS BEFORE YOU DIG
811 OR 1-800-424-5555

DATE	MARK	NATURE	REVISIONS	MADE BY	CHK'D	REV'D



LPD engineering pllc
1932 First Ave
Suite 201
Seattle, WA 98101
p. 206.725.1211
f. 206.973.5344
www.lpdengineering.com

BUILDINGWORK
architecture
design
preservation
159 western avenue west, suite 406
seattle, washington 98119
office 206.775.8668
www.buildingwork.design

REVIEWED BY SPU/WATER ENGINEERING	20.....
REVIEWED BY SPU/DRAINAGE	20.....
APPROVED BY SDOT STREET IMPROVEMENT PERMITTING	20.....

NAME OR INITIALS AND DATE DESIGNED, FKM . . . 8/19/2021 . . . CHECKED, MJS . . . 8/19/2021 . . .	INITIALS AND DATE REVIEWED: PROJECT MANAGER
DRAWN, KES . . . 8/19/2021 . . . CHECKED, MJS . . . 8/19/2021 . . .	DESIGN REVIEW REVISED AS-BUILT.....



BEN BRIDGE CLOCK - ROW PERMIT

501-PINE ST
IMPROVEMENTS (5TH & PINE)

SDOT PROJECT NO.	XXXXXXXX
VAULT PLAN NO.	
VAULT SERIAL NO.	
SHEET	4 OF 4

Structural Detail and Contractor's Description of Work



865 Lind Avenue SW, Renton WA 98057
(206) 728 8822 www.artechfas.com

Statement of Work 1/3/2022

Ben Bridge Clock Deinstallation

Method:

Deinstall clock in three major parts; head, column, and base, after removing all clock faces, light covers, bulbs and any other additional removable parts.

Note: the mechanics of the clock or works or highly susceptible to damage due to moisture. We will take precautions to minimize any water exposure with plastic. However, it would be best to conduct this work during a dry season.

1. Clock head or face. After the glass has been removed. Under the advisement of a Horologist, we will detach any works. Labeling and categorizing all removable parts. After which utilizing a **6K Tele-handler forklift and 15-foot capacity scissor lift** we will rig the head for removal loosening any nuts or bolts presently holding it to the column. **The head will be staged, poly/shrink wrapped and palletized for transportation.**
2. Column midsection. After removing any internal works connecting the base to the head. We will take a similar approach to unbolt, rig the column, lower, and secure it to a pallet for transportation.
3. We will repeat the same action for the base as well. All units and boxes will either ride on a flatbed truck or in an Artech air-side climate-controlled box truck.

Notes:

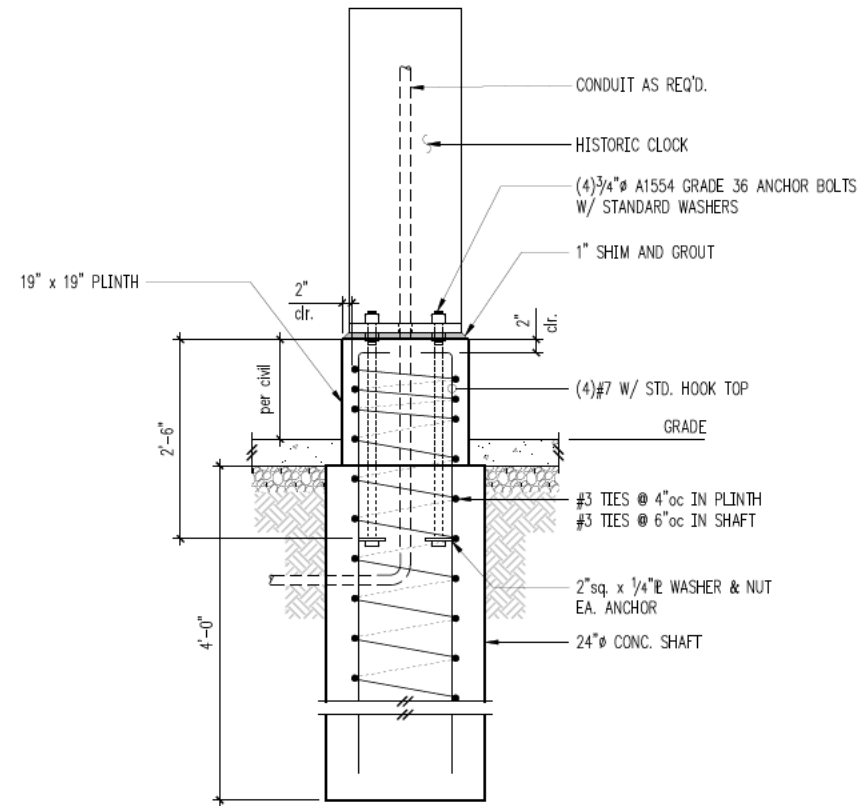
Permitting may require flaggers, street closures or after-hours work. This will most likely result in the need for additional personnel. This work does not include any movement in storage or off this job site.

Bill Whipple clock Deinstallation

Utilizing notes on the construction of this clock, we will in similar fashion to the deinstallation of the Ben Bridge Clock, work from the top down to deinstall this sculpture.

Working with a horologist, we will remove any fragile clock parts as necessary.

Equipment used will be a 6K Tele-handler forklift and 15-foot capacity scissor lift. Clock sections will be poly/shrink wrapped and palletized for transportation.



Column Footing

Detail 3

3/4" = 1'-0"