

NEW HOPE, MINNESOTA
BY PART NUMBER 6552

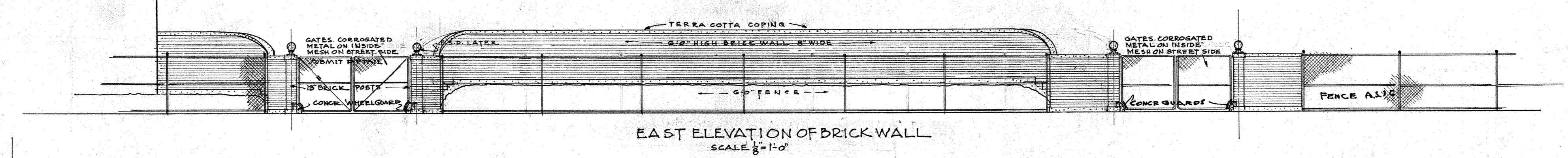
SAFCO PRODUCTS • NEW HOPE, MINNESOTA
REDUCED BY PART NUMBER 6552

SAFCO PRODUCTS • NEW HOPE, MINNESOTA
REDUCED BY PART NUMBER 6552

SAFCO PRODUCTS • NEW HOPE, MINNESOTA
REDUCED BY PART NUMBER 6552

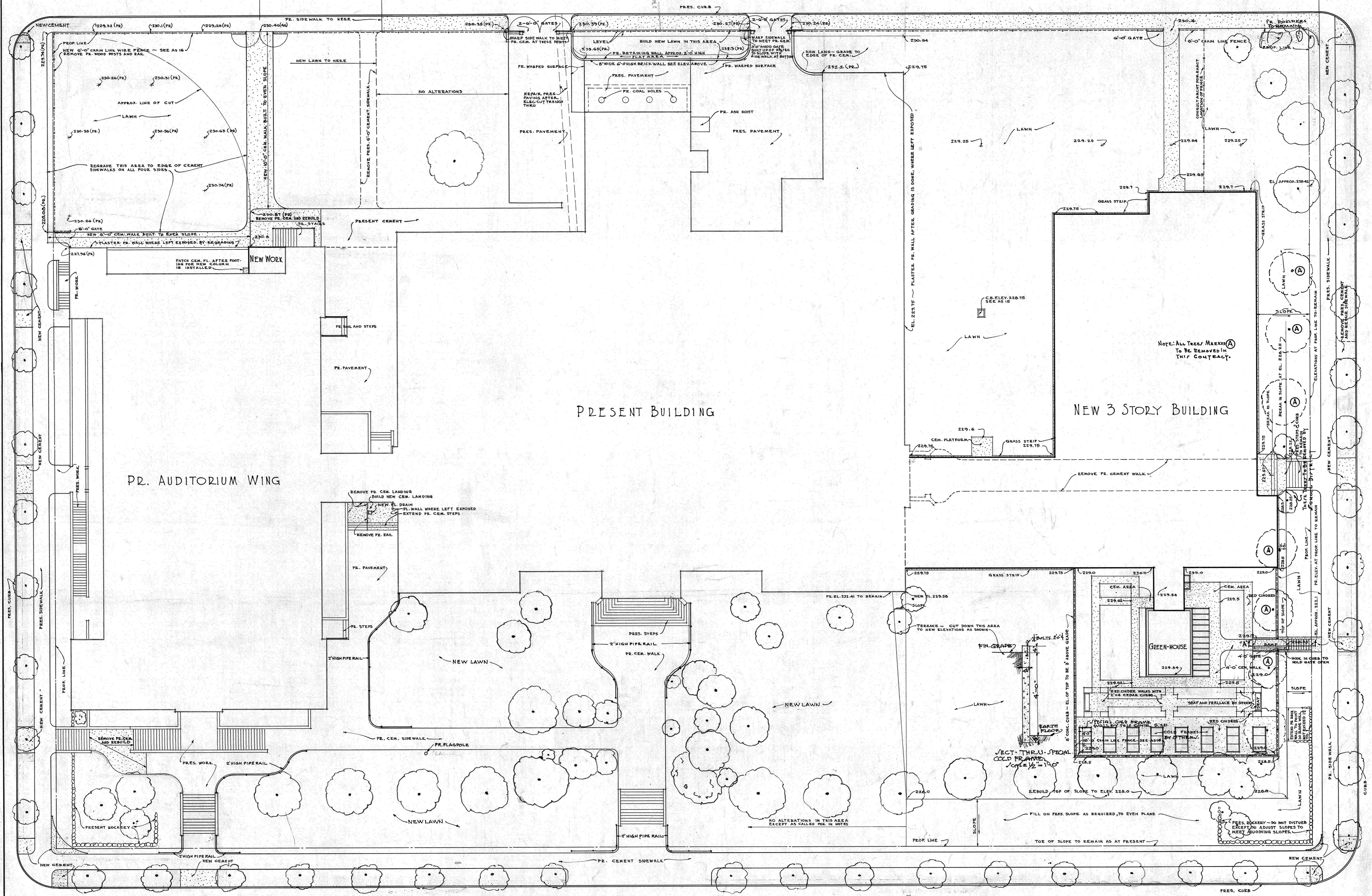
SAFCO PRODUCTS • NEW HOPE, MINNESOTA
REDUCED BY PART NUMBER 6552

SAFCO PRODUCTS • NEW HOPE, MINNESOTA
REDUCED BY PART NUMBER 6552



WOODLAWN PLACE

BUILD NEW SIDEWALK BETWEEN CURB AND PROP. LINE WITH SIDE ON PROP. LINE 1' ABOVE THE CURB

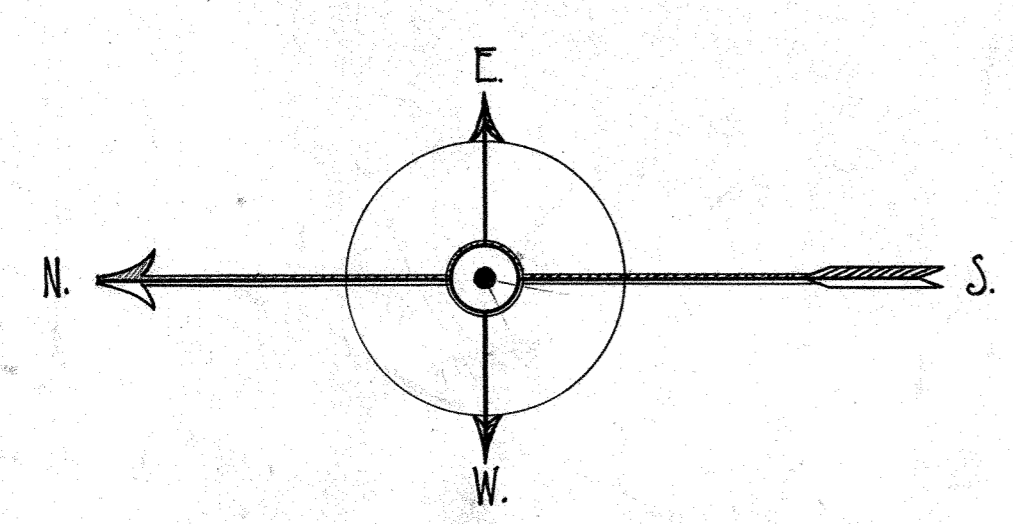


PRESENT BUILDING

NEW 3 STORY BUILDING

PR. AUDITORIUM WING

NORTH FORTY THIRD STREET



• PLOT PLAN •
SCALE - 1/8\"/>

SECTION 'A' THRU STEPS FROM YARD TO STREET
SCALE - 1/2\"/>

NOTE: CONTRACTOR MUST VERIFY ALL MEASUREMENTS AT BUILDING.

LINCOLN HIGH SCHOOL ADDITION		
PLOT PLAN		
DATE	SEATTLE SCHOOL DISTRICT NO. 1	SHEET NO.
MAY 14, 1930	F. A. NARAMORE,	2
DRAWN BY	ARCHITECT	
CHECKED BY	319 DEXTER AVENUE	
E.M.	SEATTLE, WASH.	

SAFCO PRODUCTS • NEW HOPE, MINNESOTA
REDUCED BY PART NUMBER 6552

SAFCO PRODUCTS • NEW HOPE, MINNESOTA
REDUCED BY PART NUMBER 6552

SAFCO PRODUCTS • NEW HOPE, MINNESOTA
REDUCED BY PART NUMBER 6552

SAFCO PRODUCTS • NEW HOPE, MINNESOTA
REDUCED BY PART NUMBER 6552

SAFCO PRODUCTS • NEW HOPE, MINNESOTA
REDUCED BY PART NUMBER 6552

SAFCO PRODUCTS • NEW HOPE, MINNESOTA
REDUCED BY PART NUMBER 6552

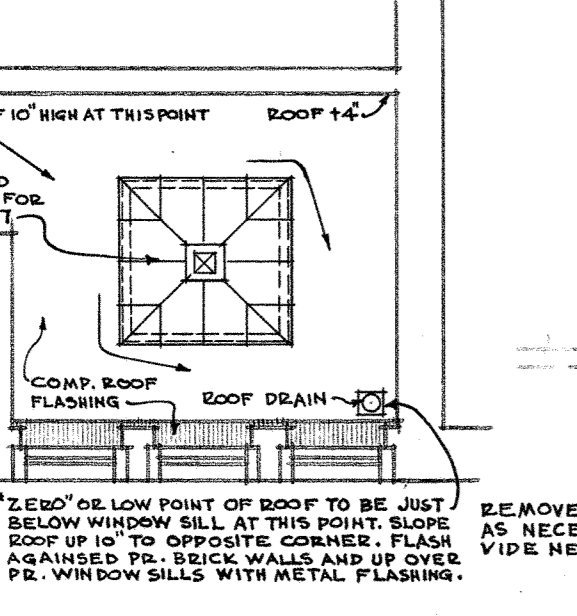
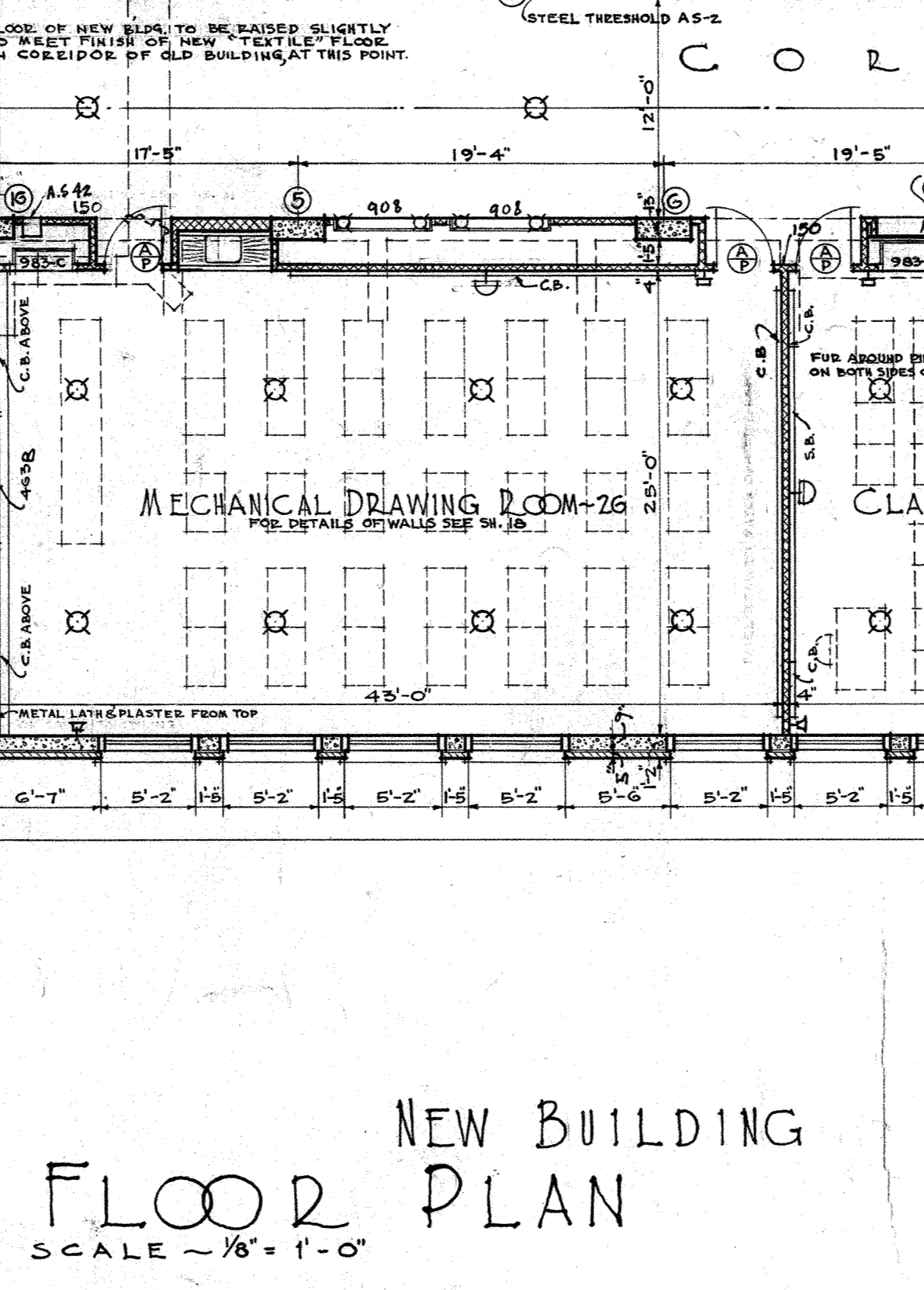
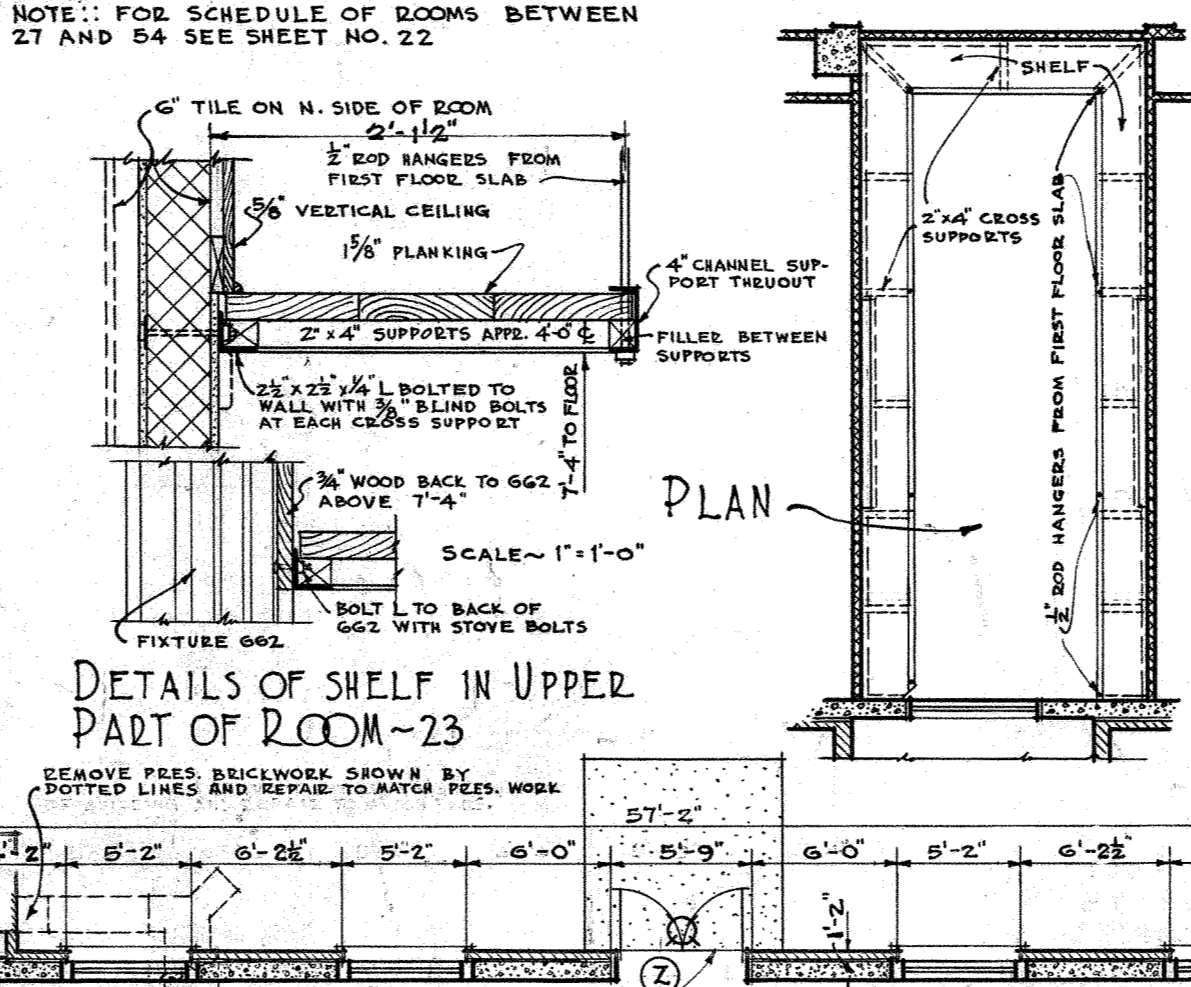
015-0102

KEY TO MATERIALS		KEY TO MATERIALS	
[Symbol]	BRICK IN SECTION	[Symbol]	ELEG. OUTLETS - CEILING
[Symbol]	CONCRETE IN SECTION	[Symbol]	ELEG. WALL PLUG
[Symbol]	HOLLOW TILE IN SECTION	[Symbol]	BRACKET LIGHT
[Symbol]	STUD PARTITION	[Symbol]	FLOOR PLUG
[Symbol]	2" SOLID PARTITION	[Symbol]	FIRE ALARM
[Symbol]	METAL IN SECTION	[Symbol]	CLOCK
[Symbol]	METAL IN ELEVATION	[Symbol]	SIGNAL GONG
[Symbol]	REMOVE AS NOTED	[Symbol]	HOSE BIBB
[Symbol]	EXISTING WORK	[Symbol]	INTERCOMMUNICATIONS PHONE
[Symbol]		[Symbol]	EXIT LIGHT
[Symbol]		[Symbol]	OUTSIDE PHONE

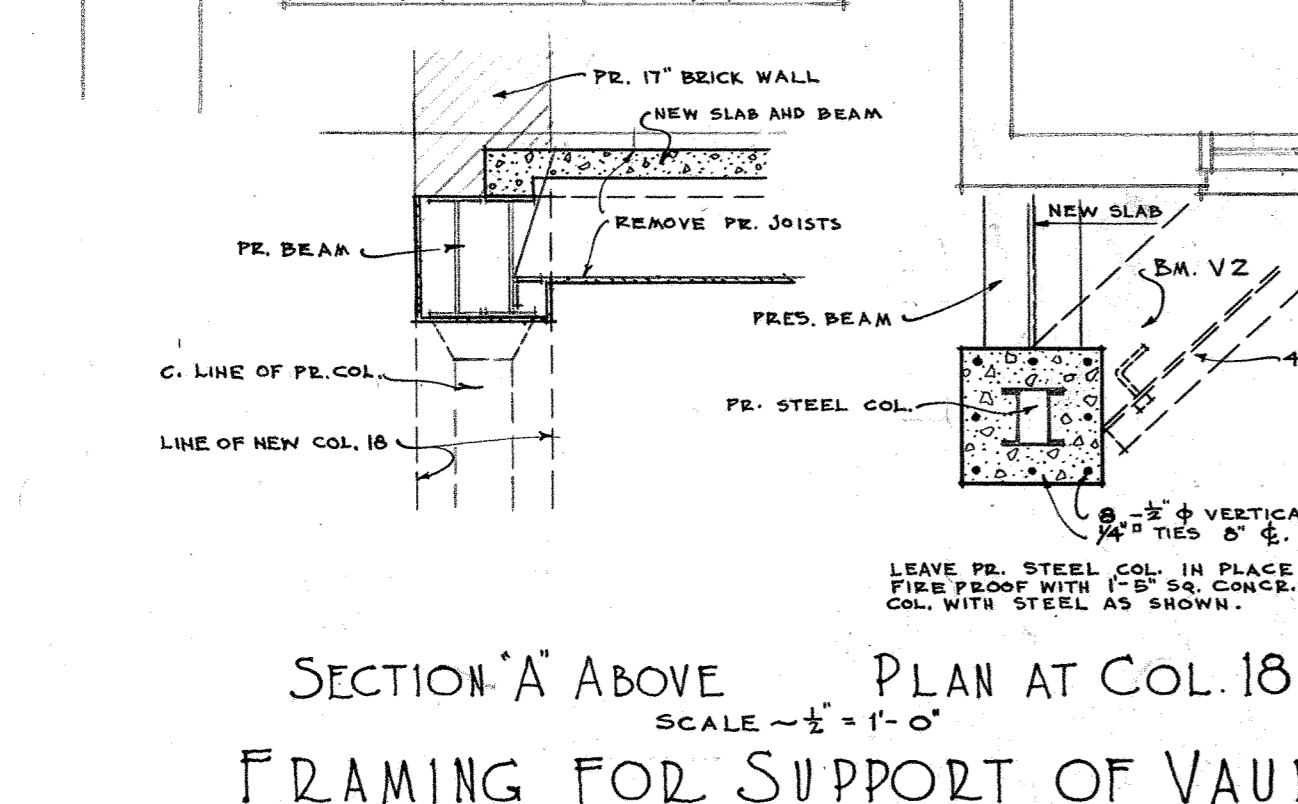
SCHEDULE CONTINUED											
NAME OF ROOM	ROOM NUMBER	FLOOR	BASE	WAINSCOT	WALLS	CEILING	WALLS	CEILING	WALLS	CEILING	MISCELLANEOUS
CORRIDOR	27	AT	F	F	SK	PL	PL	PL	PL	PL	
PROJECT RM	54	C	C	F	SK	PL	PL	PL	PL	PL	
CORRIDOR	55	-	-	-	-	-	-	-	-	-	
FINISHING RM	56	-	-	-	-	-	-	-	-	-	
CORRIDOR	57	-	-	-	-	-	-	-	-	-	
OFFICE	58	-	-	-	-	-	-	-	-	-	
MET. WORK SHED	59	-	-	-	-	-	-	-	-	-	
OFFICE	60	-	-	-	-	-	-	-	-	-	
TOOL ROOM	61	-	-	-	-	-	-	-	-	-	
STORE ROOM	62	-	-	-	-	-	-	-	-	-	
PLANNER RM	63	-	-	-	-	-	-	-	-	-	
WOODWORK	64	-	-	-	-	-	-	-	-	-	
TOILET	64	-	-	-	-	-	-	-	-	-	

SCHEDULE OF INTERIOR WORK-FINISH ETC					
LEGEND					
SYMBOL	EQUIVALENT	SYMBOL	EQUIVALENT	SYMBOL	EQUIVALENT
SSD	SPECIAL-SEE DETAIL	CB	CORK BOARD	ST	STEEL
C	CEMENT	SB	SLATE BLACKBOARD	VN	VARNISH
M	MAPLE	CP	CEMENT PLASTER	ST	STAIN
F	FIR	PL	PLASTER	EN	ENAMEL
MAG	MAGNESITE	SC	SUSPENDED CEILING	P	PAINT
L	LINOLEUM	PR	PRESENT	PB	PAINT BAND
TK	TERAZZO	AS	ARCHITECT'L STANDARD	CWP	COLD WATER PAINT
AT	ASPHALT TILE	CK	CORK	K	KALSOMINE
WCR	WOOD CHAIR RAIL	LSM	LARGE SHOE MOLD	BU	BULLAP
DH	DOUBLE HUNG	BB	BAUER BARF	MT	METAL
H	HINGED	DB	DULL BRASS	MC	METAL COVERED
SK	SKYLIGHT	NP	NICKEL PLATED	SM (SG)	SHEET METAL
CL	CEILING LIGHT	BL	BORROWED LIGHT	J	JASPE LINOLEUM

GROUND FLOOR PLAN					
NAME OF ROOM	ROOM NUMBER	FLOOR	BASE	WAINSCOT	WALLS
GIRLS TOILET	1	ENTER	F	PL	PL
LAVATORY	2	ENTER	F	PL	PL
ENTRY	3	ENTER	F	PL	PL
BOYS TOILET	4	ENTER	F	PL	PL
CLASS ROOM	5	L	F	PL	PL
STORE ROOM	6	C	F	PL	PL
ENTRY	7	AT	F	PL	PL
STORE ROOM	8	C	F	PL	PL
CLASS ROOM	9	L	F	PL	PL
FAN ROOM	10	C	F	PL	PL
CORRIDOR	11	AT	F	PL	PL
STORE ROOM	12	C	F	PL	PL
CLASS ROOM	13	L	F	PL	PL
CLASS ROOM	14	L	F	PL	PL
CLASS ROOM	15	L	F	PL	PL
CLASS ROOM	16	L	F	PL	PL
JANITORS RM	17	C	F	PL	PL
STAIR HALL	18	M	F	PL	PL
ENTRANCE	19	AT	F	PL	PL
BOTANY ROOM	20	L	F	PL	PL
GREEN HOUSE	21	C	F	PL	PL
TOOL ROOM	22	C	F	PL	PL
WORK ROOM	23	AT	F	PL	PL
BOTANY ROOM	24	L	F	PL	PL
CLASS ROOM	25	L	F	PL	PL
Mech. Drawing Room	26	L	F	PL	PL
MECHANICAL DRAWING ROOM	26	L	F	PL	PL
MECHANICAL DRAWING ROOM	26	L	F	PL	PL



BEAM SCHEDULE	
BV-1	9x12 3-3/8" x 3-3/8"
BV-2	12x12 3-3/8" x 3-3/8"
BV-3	9x12 3-3/8" x 3-3/8"



NOTE: CONTRACTOR MUST VERIFY ALL MEASUREMENTS AT BUILDING.

LINCOLN HIGH SCHOOL ADDITION
GROUND FLOOR PLAN

DATE: MAY 14, 1950
DRAWN BY: F.B.S.
CHECKED BY: E.V.J.

SEATTLE SCHOOL DISTRICT NO. 1
R. A. NARAMORE, ARCHITECT
810 DEXTER AVENUE, SEATTLE, WASH.

SHEET NO. 7

015-F-0102

SAFCO PRODUCTS • NEW HOPE, MINNESOTA
REPRODUCED BY PART NUMBER 6002

SAFCO PRODUCTS • NEW HOPE, MINNESOTA
REPRODUCED BY PART NUMBER 6002

SAFCO PRODUCTS • NEW HOPE, MINNESOTA
REPRODUCED BY PART NUMBER 6002

SAFCO PRODUCTS • NEW HOPE, MINNESOTA
REPRODUCED BY PART NUMBER 6002

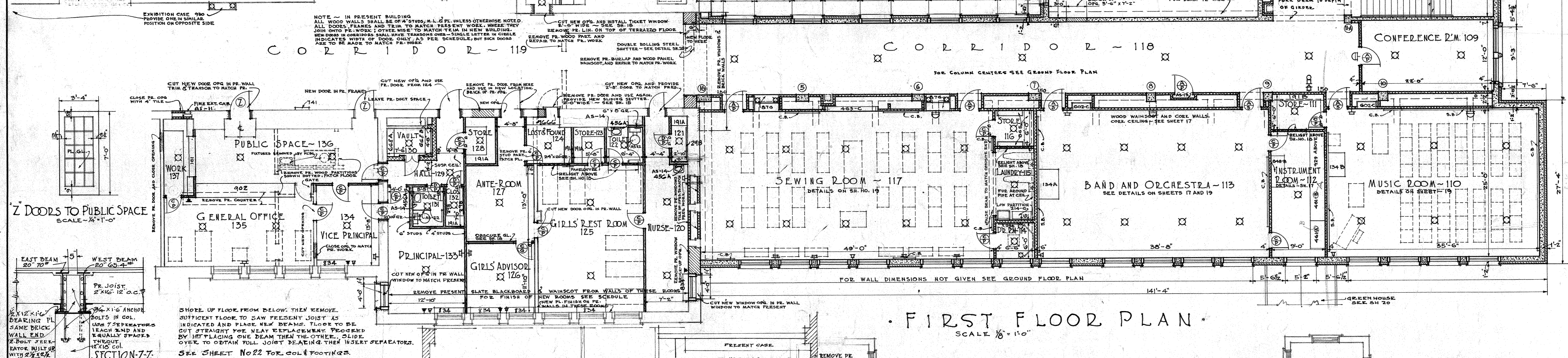
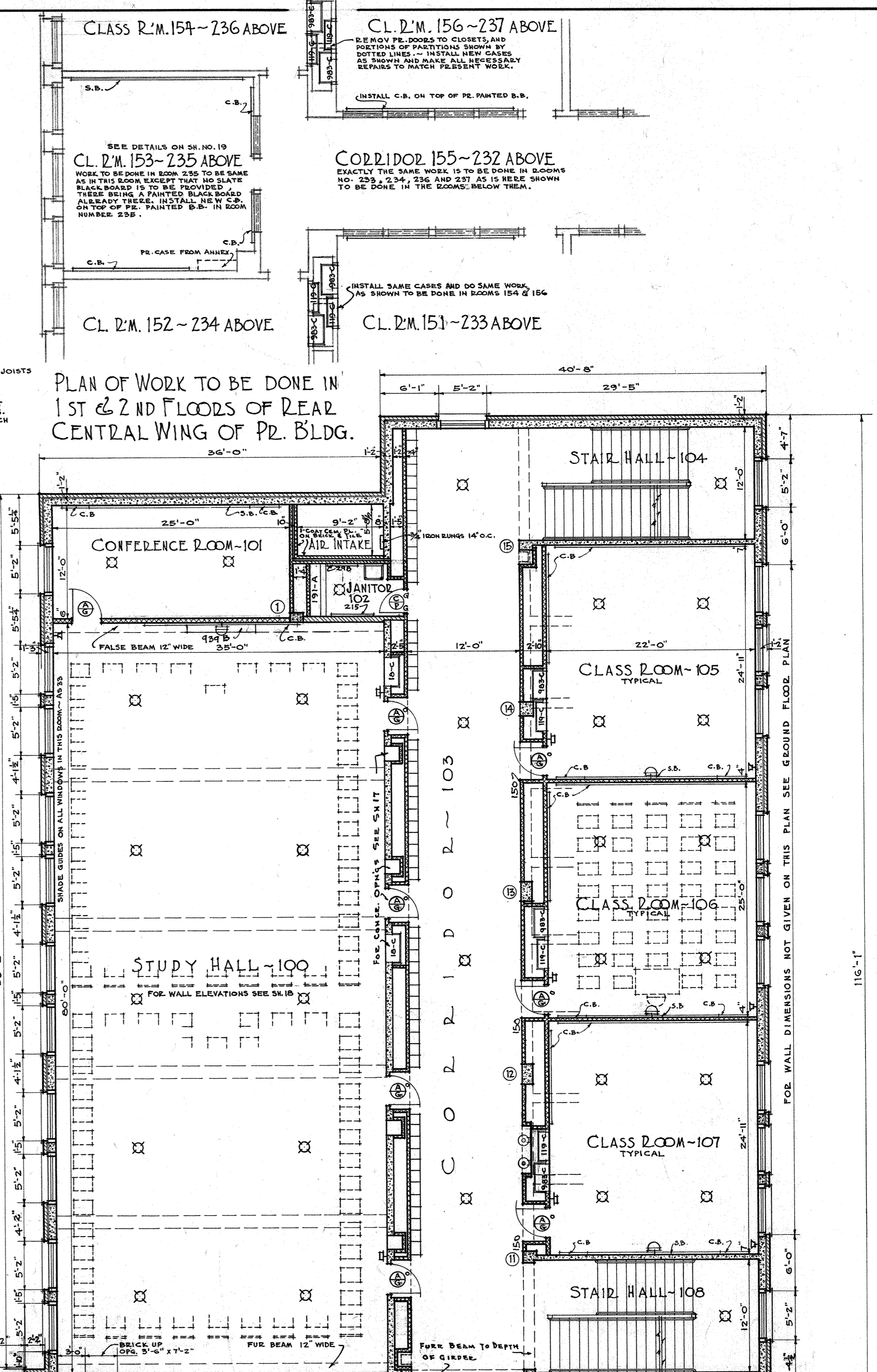
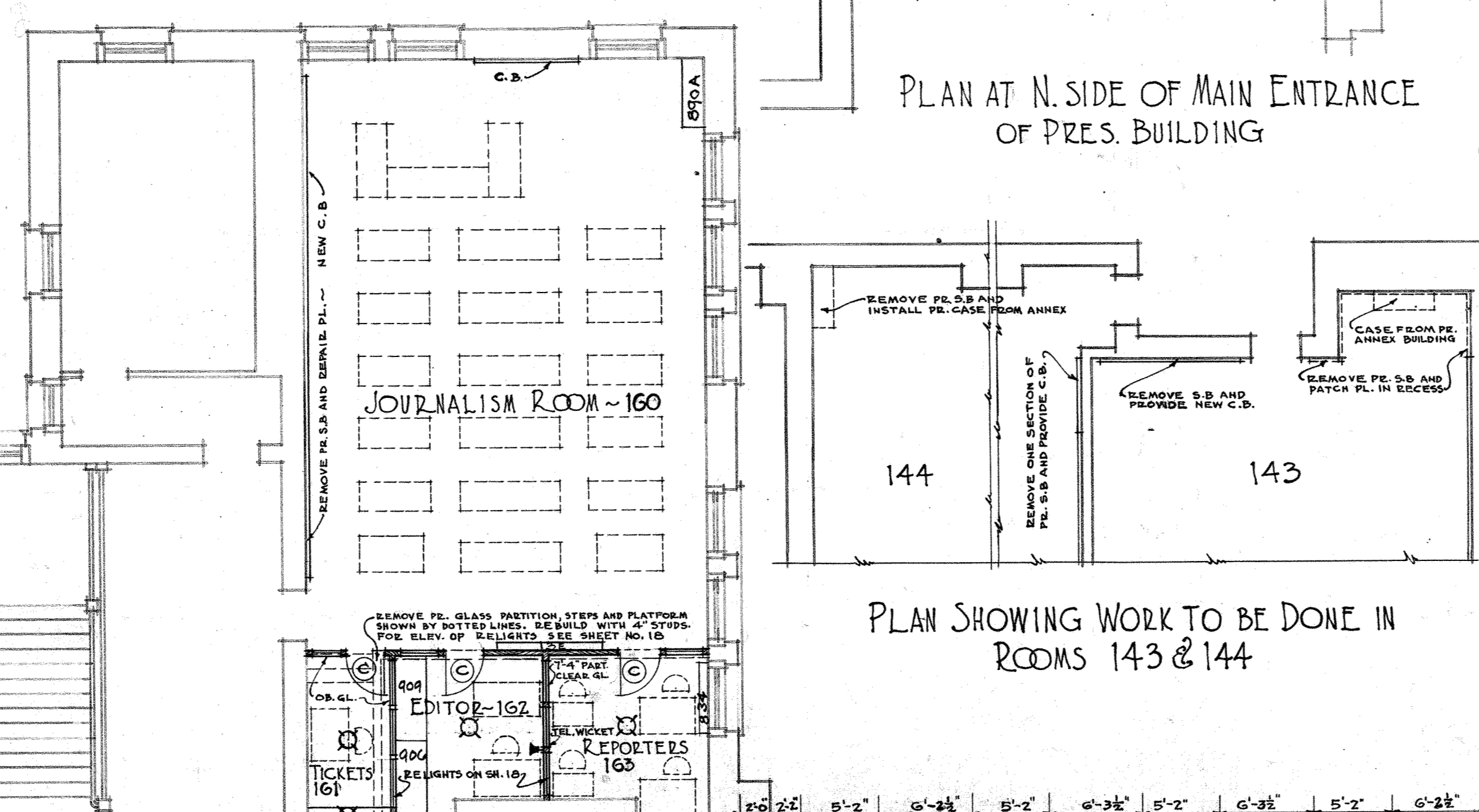
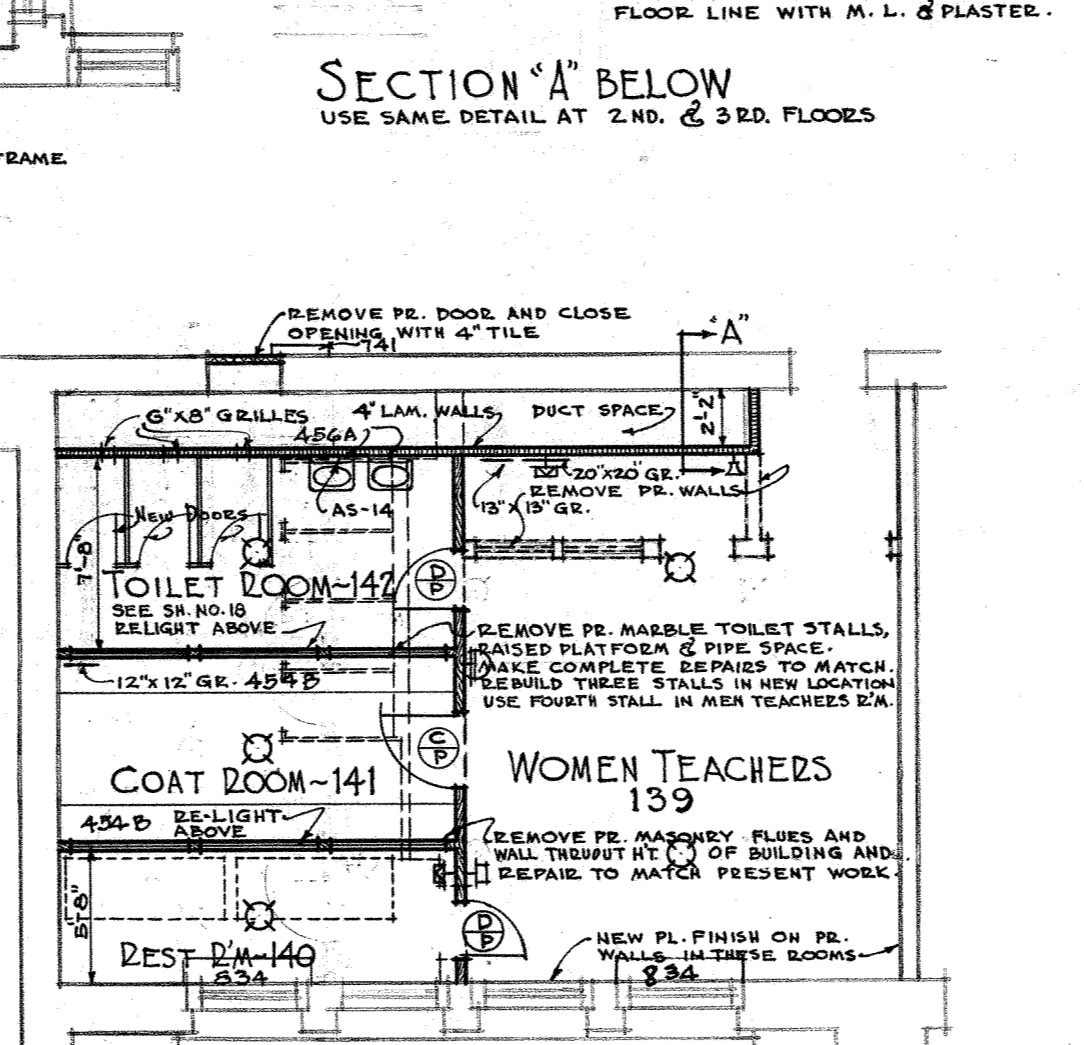
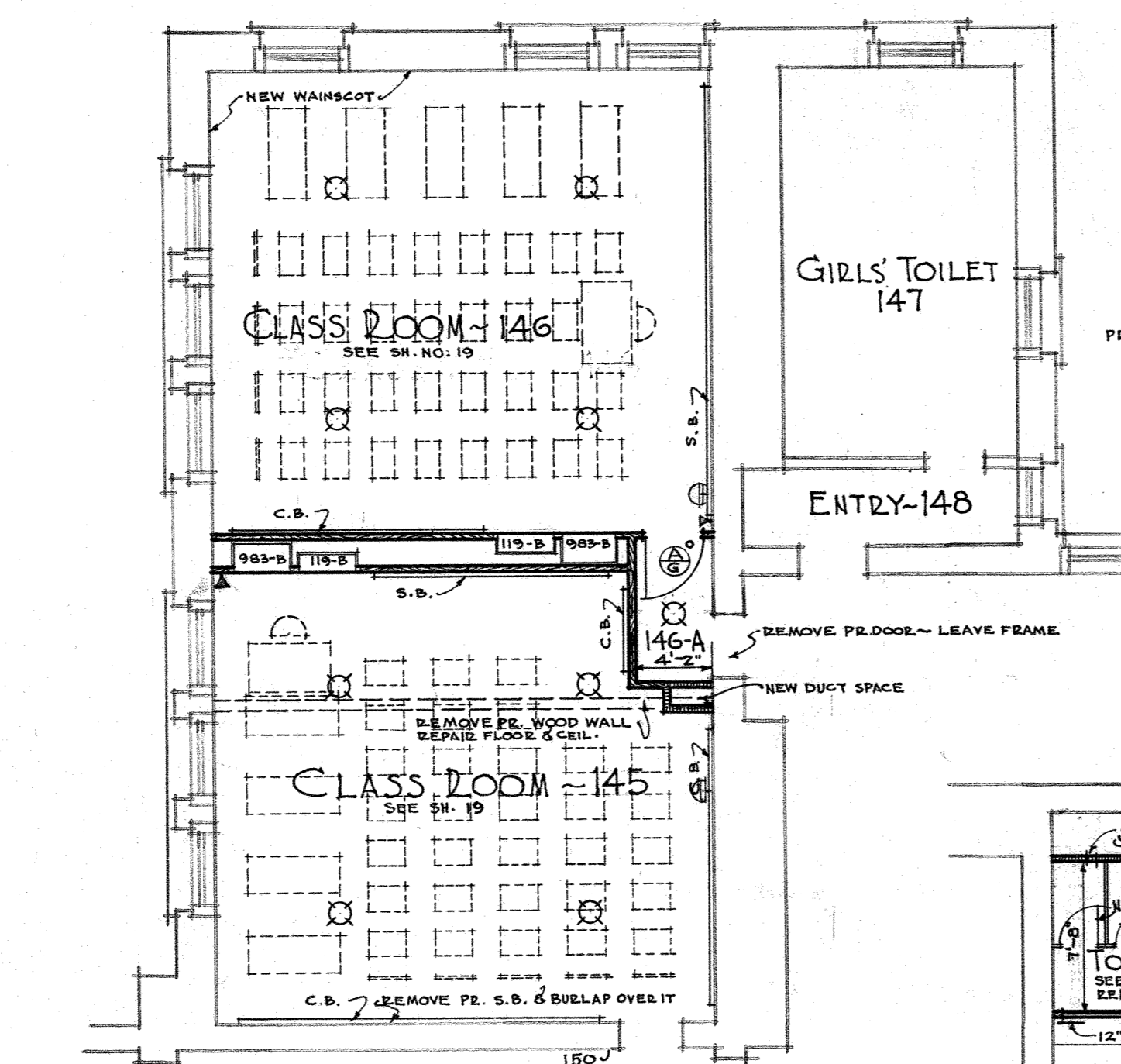
SAFCO PRODUCTS • NEW HOPE, MINNESOTA
REPRODUCED BY PART NUMBER 6002

SAFCO PRODUCTS • NEW HOPE, MINNESOTA
REPRODUCED BY PART NUMBER 6002

015-0103

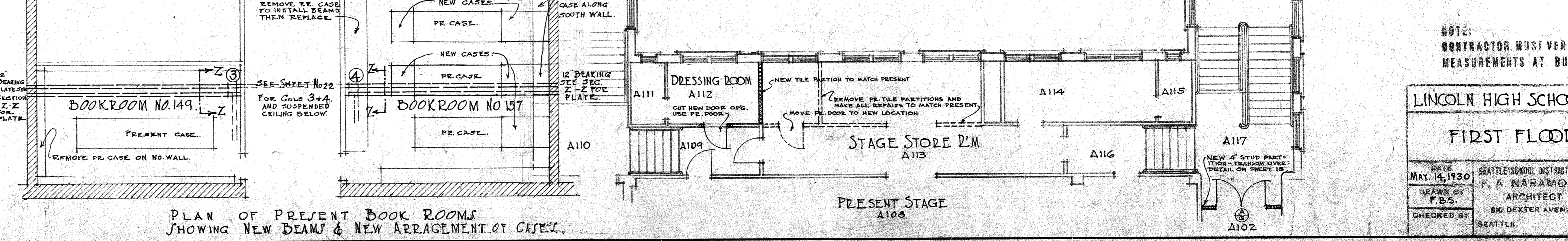
FIRST FLOOR PLAN

NAME OF ROOM	NUMBER	FLOOR	BASE	MANUFACTURE	PICTURE MOLD	TRIM	WINDOWS	BLACK BOARD	CORK BOARD	WAINSCOT	WALLS	CEILING	SUSPENDING	FLOORING	MISCELLANEOUS
STUDY HALL	100	L	F	F	F	F	SH	CB	PL	PL	PL	OK	BB	BB	REMOVE SLATE FLOOR BEAMS UNDER STONE FINING.
CONFERENCE ROOM	101	L	F	F	F	F	SH	CB	PL	PL	PL	OK	BB	BB	REMOVE SLATE FLOOR BEAMS UNDER STONE FINING.
JANITOR	102	C	C	-	-	-	-	-	-	-	-	-	-	-	P.F. & BASE.
CORRIDOR	103	A	F	F	F	F	SH	CB	PL	PL	PL	OK	BB	BB	REMOVE SLATE FLOOR BEAMS UNDER STONE FINING.
STAIR HALL	104	M	F	F	F	F	SH	CB	PL	PL	PL	OK	BB	BB	REMOVE SLATE FLOOR BEAMS UNDER STONE FINING.
CLASS ROOM	105	L	F	F	F	F	SH	CB	PL	PL	PL	OK	BB	BB	REMOVE SLATE FLOOR BEAMS UNDER STONE FINING.
CLASS ROOM	106	L	F	F	F	F	SH	CB	PL	PL	PL	OK	BB	BB	REMOVE SLATE FLOOR BEAMS UNDER STONE FINING.
CLASS ROOM	107	L	F	F	F	F	SH	CB	PL	PL	PL	OK	BB	BB	REMOVE SLATE FLOOR BEAMS UNDER STONE FINING.
STAIR HALL	108	M	F	F	F	F	SH	CB	PL	PL	PL	OK	BB	BB	REMOVE SLATE FLOOR BEAMS UNDER STONE FINING.
CONFERENCE ROOM	109	L	F	F	F	F	SH	CB	PL	PL	PL	OK	BB	BB	REMOVE SLATE FLOOR BEAMS UNDER STONE FINING.
MUSIC ROOM	110	M	F	F	F	F	SH	CB	PL	PL	PL	OK	BB	BB	REMOVE SLATE FLOOR BEAMS UNDER STONE FINING.
STOKE ROOM	111	M	F	F	F	F	SH	CB	PL	PL	PL	OK	BB	BB	REMOVE SLATE FLOOR BEAMS UNDER STONE FINING.
INSTRUMENT ROOM	112	M	F	F	F	F	SH	CB	PL	PL	PL	OK	BB	BB	REMOVE SLATE FLOOR BEAMS UNDER STONE FINING.
MANDOLIN STRAUM	113	M	F	F	F	F	SH	CB	PL	PL	PL	OK	BB	BB	REMOVE SLATE FLOOR BEAMS UNDER STONE FINING.
DRESSING ROOM	114	L	F	F	F	F	SH	CB	PL	PL	PL	OK	BB	BB	REMOVE SLATE FLOOR BEAMS UNDER STONE FINING.
LAUNDRY RM	115	L	F	F	F	F	SH	CB	PL	PL	PL	OK	BB	BB	REMOVE SLATE FLOOR BEAMS UNDER STONE FINING.
STOKE ROOM	116	L	F	F	F	F	SH	CB	PL	PL	PL	OK	BB	BB	REMOVE SLATE FLOOR BEAMS UNDER STONE FINING.
SEWING ROOM	117	L	F	F	F	F	SH	CB	PL	PL	PL	OK	BB	BB	REMOVE SLATE FLOOR BEAMS UNDER STONE FINING.
CORRIDOR	118	A	F	F	F	F	SH	CB	PL	PL	PL	OK	BB	BB	REMOVE SLATE FLOOR BEAMS UNDER STONE FINING.
CORRIDOR	119	-	-	-	-	-	-	-	-	-	-	-	-	-	REMOVE P.F. P.A.
NURSE	120	J	F	F	F	F	SH	CB	PL	PL	PL	OK	BB	BB	REMOVE P.F. P.A.
CLOSET	121	J	F	F	F	F	SH	CB	PL	PL	PL	OK	BB	BB	REMOVE P.F. P.A.
TOILET	122	TER	TER	F	F	F	SH	CB	PL	PL	PL	OK	BB	BB	REMOVE P.F. P.A.
STOKE ROOM	123	L	F	F	F	F	SH	CB	PL	PL	PL	OK	BB	BB	REMOVE P.F. P.A.
LOST & FOUND RM	124	L	F	F	F	F	SH	CB	PL	PL	PL	OK	BB	BB	REMOVE P.F. P.A.
GIRLS REST RM	125	J	F	F	F	F	SH	CB	PL	PL	PL	OK	BB	BB	REMOVE P.F. P.A.
GIRLS ADVISOR	126	J	F	F	F	F	SH	CB	PL	PL	PL	OK	BB	BB	REMOVE P.F. P.A.
ANTE ROOM	127	J	F	F	F	F	SH	CB	PL	PL	PL	OK	BB	BB	REMOVE P.F. P.A.
STOKE ROOM	128	J	F	F	F	F	SH	CB	PL	PL	PL	OK	BB	BB	REMOVE P.F. P.A.
HALL	129	J	F	F	F	F	SH	CB	PL	PL	PL	OK	BB	BB	REMOVE P.F. P.A.
HALL	130	J	F	F	F	F	SH	CB	PL	PL	PL	OK	BB	BB	REMOVE P.F. P.A.
TOILET	131	TER	TER	F	F	F	SH	CB	PL	PL	PL	OK	BB	BB	REMOVE P.F. P.A.
CLOSET	132	J	F	F	F	F	SH	CB	PL	PL	PL	OK	BB	BB	REMOVE P.F. P.A.
PRINCIPAL	133	J	F	F	F	F	SH	CB	PL	PL	PL	OK	BB	BB	REMOVE P.F. P.A.
VICE PRINCIPAL	134	J	F	F	F	F	SH	CB	PL	PL	PL	OK	BB	BB	REMOVE P.F. P.A.
GENERAL OFFICE	135	J	F	F	F	F	SH	CB	PL	PL	PL	OK	BB	BB	REMOVE P.F. P.A.
PUBLIC SPACE	136	J	F	F	F	F	SH	CB	PL	PL	PL	OK	BB	BB	REMOVE P.F. P.A.
WORK ROOM	137	J	F	F	F	F	SH	CB	PL	PL	PL	OK	BB	BB	REMOVE P.F. P.A.
ENTRANCE	138	-	-	-	-	-	-	-	-	-	-	-	-	-	REMOVE P.F. P.A.
WOMEN TEACHERS	139	J	F	F	F	F	SH	CB	PL	PL	PL	OK	BB	BB	REMOVE P.F. P.A.
REST ROOM	140	J	F	F	F	F	SH	CB	PL	PL	PL	OK	BB	BB	REMOVE P.F. P.A.
COAT ROOM	141	J	F	F	F	F	SH	CB	PL	PL	PL	OK	BB	BB	REMOVE P.F. P.A.
TOILET	142	TER	TER	F	F	F	SH	CB	PL	PL	PL	OK	BB	BB	REMOVE P.F. P.A.
CLASS ROOM	143	-	-	-	-	-	-	-	-	-	-	-	-	-	REMOVE P.F. P.A.
CLASS ROOM	144	-	-	-	-	-	-	-	-	-	-	-	-	-	REMOVE P.F. P.A.
CLASS ROOM	145	-	-	-	-	-	-	-	-	-	-	-	-	-	REMOVE P.F. P.A.
CLASS ROOM	146	-	-	-	-	-	-	-	-	-	-	-	-	-	REMOVE P.F. P.A.
GIRLS TOILET	147	-	-	-	-	-	-	-	-	-	-	-	-	-	REMOVE P.F. P.A.
ENTRY	148	-	-	-	-	-	-	-	-	-	-	-	-	-	REMOVE P.F. P.A.
BOOK ROOM	149	-	-	-	-	-	-	-	-	-	-	-	-	-	REMOVE P.F. P.A.
CLASS ROOM	150	-	-	-	-	-	-	-	-	-	-	-	-	-	REMOVE P.F. P.A.
CLASS ROOM	151	-	-	-	-	-	-	-	-	-	-	-	-	-	REMOVE P.F. P.A.
CLASS ROOM	152	-	-	-	-	-	-	-	-	-	-	-	-	-	REMOVE P.F. P.A.
CLASS ROOM	153	-	-	-	-	-	-	-	-	-	-	-	-	-	REMOVE P.F. P.A.
CLASS ROOM	154	-	-	-	-	-	-	-	-	-	-	-	-	-	REMOVE P.F. P.A.
CORRIDOR	155	-	-	-	-	-	-	-	-	-	-	-	-	-	REMOVE P.F. P.A.
CLASS ROOM	156	-	-	-	-	-	-	-	-	-	-	-	-	-	REMOVE P.F. P.A.
BOOK ROOM	157	-	-	-	-	-	-	-	-	-	-	-	-	-	REMOVE P.F. P.A.
ENTRANCE	158	-	-	-	-	-	-	-	-	-	-	-	-	-	REMOVE P.F. P.A.
BOYS TOILET	159	-	-	-	-	-	-	-	-	-	-	-	-	-	REMOVE P.F. P.A.
JOURNALISM RM	160	-	-	-	-	-	-	-	-	-	-	-	-	-	REMOVE P.F. P.A.
TICKETS	161	-	-	-	-	-	-	-	-	-	-	-	-	-	REMOVE P.F. P.A.
EDITORS ROOM	162	-	-	-	-	-	-	-	-	-	-	-	-	-	REMOVE P.F. P.A.
REPORTERS	163	-	-	-	-	-	-	-	-	-	-	-	-	-	REMOVE P.F. P.A.
BOOK RM	149	-	-	-	-	-	-	-	-	-	-	-	-	-	REMOVE P.F. P.A.
BOOK ROOM	157	-	-	-	-	-	-	-	-	-	-	-	-	-	REMOVE P.F. P.A.



SCHEDULE CONTINUED

NAME OF ROOM	NUMBER	FLOOR	BASE	MANUFACTURE	PICTURE MOLD	TRIM	WINDOWS	BLACK BOARD	CORK BOARD	WAINSCOT	WALLS	CEILING	SUSPENDING	FLOORING	MISCELLANEOUS
DRESSING RM	A112	-	-	-	-	-	-	-	-	-	-	-	-	-	REMOVE P.F. CASE TO INSTALL BEAMS THEN REFRAME.
STAGE STORE RM	A117	-	-	-	-	-	-	-	-	-	-	-	-	-	REMOVE P.F. CASE TO INSTALL BEAMS THEN REFRAME.
STAIR	A102	-	-	-	-	-	-	-	-	-	-	-	-	-	REMOVE P.F. CASE TO INSTALL BEAMS THEN REFRAME.



NOTE: CONTRACTOR MUST VERIFY ALL MEASUREMENTS AT BUILDING.

LINCOLN HIGH SCHOOL ADDITION
FIRST FLOOR PLAN

DATE MAY 14, 1930
DRAWN BY F.B.S.
CHECKED BY

SEATTLE SCHOOL DISTRICT NO. 1
F. A. NARAMORE, ARCHITECT
810 DECKER AVENUE
SEATTLE, WASH.

SHEET NO. 8

015-F-0103

SAFCO PRODUCTS • NEW HOPE, MINNESOTA
REDUCED BY PART NUMBER 8532

SAFCO PRODUCTS • NEW HOPE, MINNESOTA
REDUCED BY PART NUMBER 8532

SAFCO PRODUCTS • NEW HOPE, MINNESOTA
REDUCED BY PART NUMBER 8532

SAFCO PRODUCTS • NEW HOPE, MINNESOTA
REDUCED BY PART NUMBER 8532

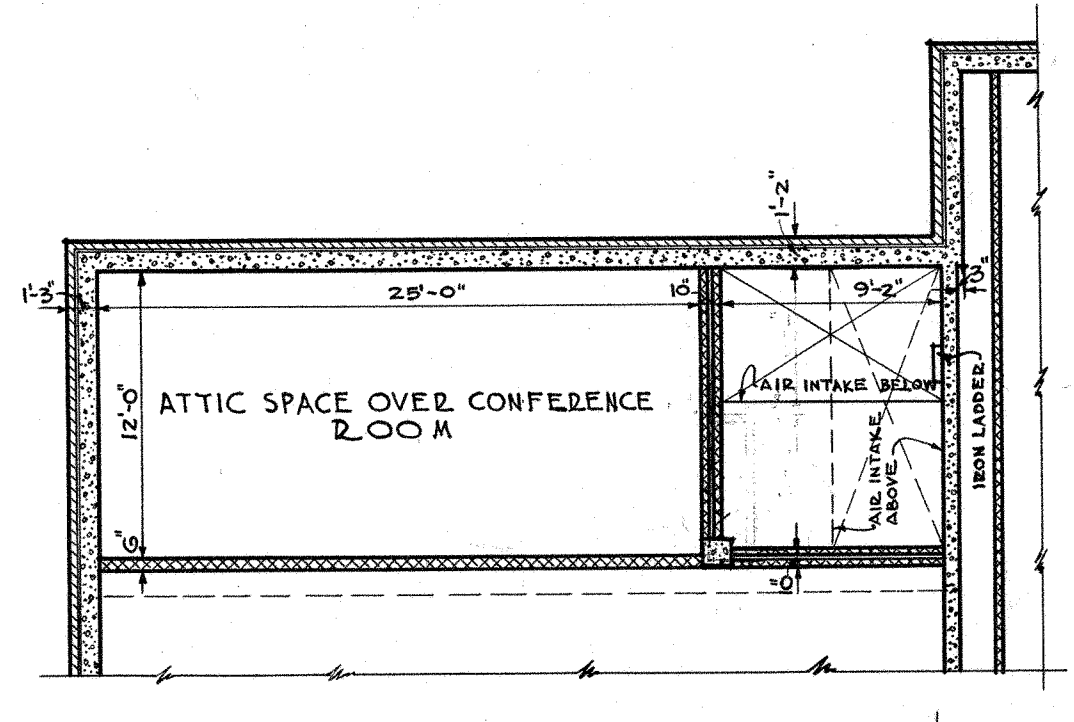
SAFCO PRODUCTS • NEW HOPE, MINNESOTA
REDUCED BY PART NUMBER 8532

SECOND FLOOR PLAN

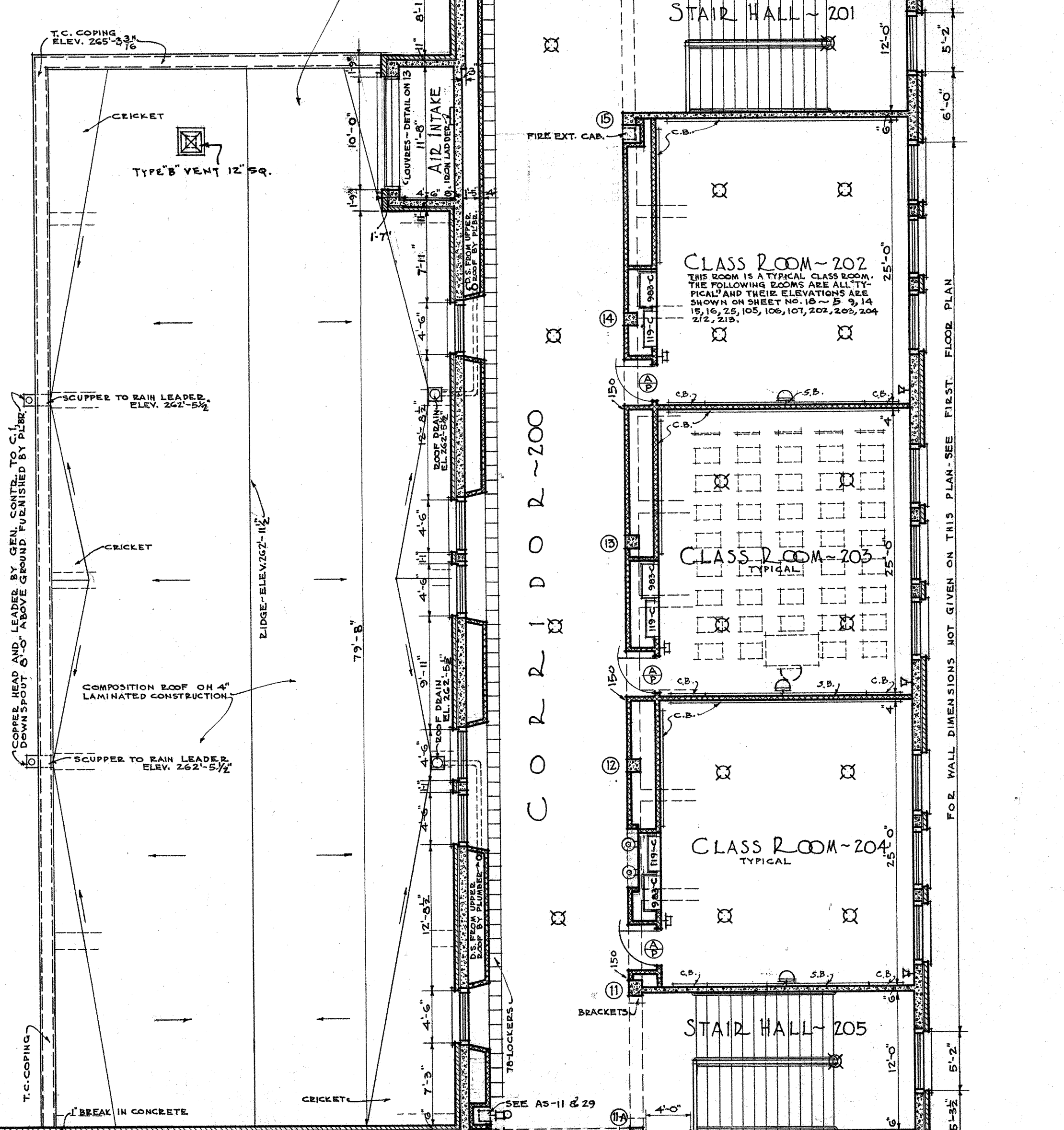
NAME OF ROOM	NUMBER	FLOOR	BASE	WINDSHIELD	REFLECT	WINDSHIELD	WINDSHIELD	WINDSHIELD	WINDSHIELD	WINDSHIELD	WINDSHIELD	WINDSHIELD	WINDSHIELD	WINDSHIELD	WINDSHIELD	WINDSHIELD	WINDSHIELD	WINDSHIELD	WINDSHIELD	MISCELLANEOUS
CORRIDOR	200	A-T	F	FB	F	F	DL	-	-	-	-	-	-	-	-	-	-	-	-	
STAIR HALL	201	MAG	MAG	FB	F	F	DL	-	-	-	-	-	-	-	-	-	-	-	-	
CLASS ROOM	202	L	F	FB	F	F	DL	SB	CB	PL	PL	PL	PL	PL	PL	PL	PL	PL	PL	
CLASS ROOM	203	L	F	FB	F	F	DL	SB	CB	PL	PL	PL	PL	PL	PL	PL	PL	PL	PL	
CLASS ROOM	204	L	F	FB	F	F	DL	SB	CB	PL	PL	PL	PL	PL	PL	PL	PL	PL	PL	
STAIR HALL	205	MAG	MAG	FB	F	F	DL	-	-	-	-	-	-	-	-	-	-	-	-	
ENTRY	206	A-T	F	FB	F	F	DL	-	-	-	-	-	-	-	-	-	-	-	-	
GIRLS TOILET	207	TER	TER	FB	-	-	DL	-	-	-	-	-	-	-	-	-	-	-	-	
STOKE ROOM	208	L	F	FB	-	-	DL	-	-	-	-	-	-	-	-	-	-	-	-	
ARTS & CRAFTS RM	209	L	F	FB	F	F	DL	-	-	-	-	-	-	-	-	-	-	-	-	
ART ROOM	210	L	F	FB	F	F	DL	-	-	-	-	-	-	-	-	-	-	-	-	
STOKE ROOM	211	L	F	FB	F	F	DL	-	-	-	-	-	-	-	-	-	-	-	-	
CLASS ROOM	212	L	F	FB	F	F	DL	SB	CB	PL	PL	PL	PL	PL	PL	PL	PL	PL	PL	
CLASS ROOM	213	L	F	FB	F	F	DL	SB	CB	PL	PL	PL	PL	PL	PL	PL	PL	PL	PL	
EXHIB. CORRIDOR	214	A-T	F	SSD	F	F	CL	-	-	-	-	-	-	-	-	-	-	-	-	
CORRIDOR	215	-	-	-	-	-	-	-	-	-	-	-	-	-	-	-	-	-	-	
GEN. SCIENCE	216	-	-	-	-	-	-	-	-	-	-	-	-	-	-	-	-	-	-	P.K. TO MATCH FR. WORK
JANITORS RM	217	-	-	-	-	-	-	-	-	-	-	-	-	-	-	-	-	-	-	
CLASS ROOM	218	-	-	-	-	-	-	-	-	-	-	-	-	-	-	-	-	-	-	
CLASS ROOM	219	-	-	-	-	-	-	-	-	-	-	-	-	-	-	-	-	-	-	
CLASS ROOM	220	-	-	-	-	-	-	-	-	-	-	-	-	-	-	-	-	-	-	
TOILET	221	TER	TER	FB	-	-	DL	-	-	-	-	-	-	-	-	-	-	-	-	REMOVE FR. WALK. CAR. PATCH PL.
MEN TEACHERS	222	J	F	FB	F	F	DL	-	-	-	-	-	-	-	-	-	-	-	-	
COATS	223	J	F	FB	F	F	DL	-	-	-	-	-	-	-	-	-	-	-	-	
CLASS ROOM	224	-	-	-	-	-	-	-	-	-	-	-	-	-	-	-	-	-	-	

SCHEDULE CONTINUED

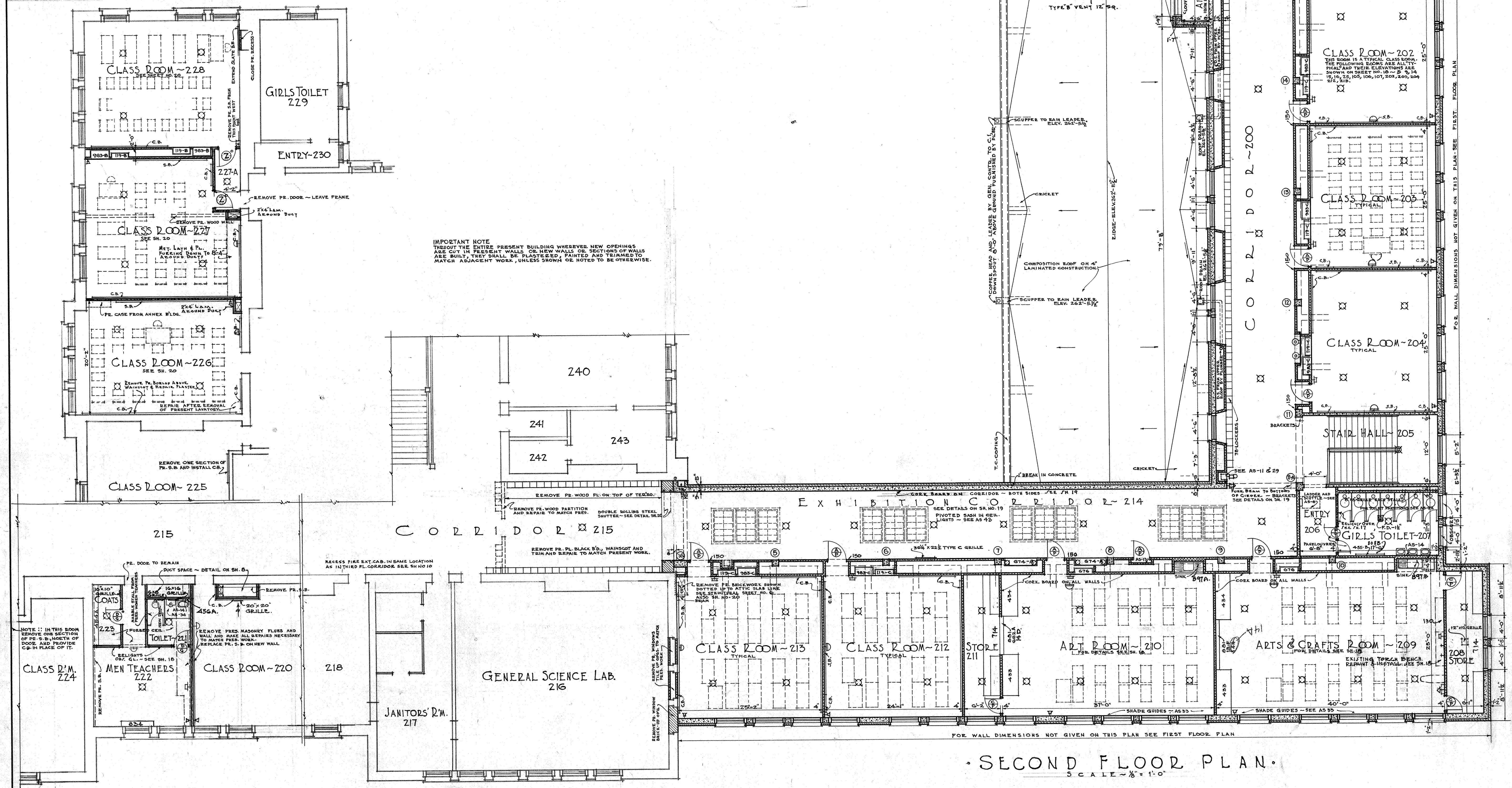
NAME OF ROOM	NUMBER	FLOOR	BASE	WINDSHIELD	REFLECT	WINDSHIELD	WINDSHIELD	WINDSHIELD	WINDSHIELD	WINDSHIELD	WINDSHIELD	WINDSHIELD	WINDSHIELD	WINDSHIELD	WINDSHIELD	WINDSHIELD	WINDSHIELD	WINDSHIELD	WINDSHIELD	MISCELLANEOUS	
CLASS ROOM	225	-	-	-	-	-	-	-	-	-	-	-	-	-	-	-	-	-	-	-	
CLASS ROOM	226	-	-	-	-	-	-	-	-	-	-	-	-	-	-	-	-	-	-	-	REMOVE FR. WALK. CAR. PATCH PL.
CLASS ROOM	227	-	-	-	-	-	-	-	-	-	-	-	-	-	-	-	-	-	-	-	REMOVE FR. WALK. CAR. PATCH PL.
ENTRY	227A	-	-	-	-	-	-	-	-	-	-	-	-	-	-	-	-	-	-	-	
CLASS ROOM	228	-	-	-	-	-	-	-	-	-	-	-	-	-	-	-	-	-	-	-	REMOVE FR. WALK. CAR. PATCH PL.
GIRLS TOILET	229	-	-	-	-	-	-	-	-	-	-	-	-	-	-	-	-	-	-	-	
ENTRY	230	-	-	-	-	-	-	-	-	-	-	-	-	-	-	-	-	-	-	-	
	231	-	-	-	-	-	-	-	-	-	-	-	-	-	-	-	-	-	-	-	
	232	-	-	-	-	-	-	-	-	-	-	-	-	-	-	-	-	-	-	-	
	233	-	-	-	-	-	-	-	-	-	-	-	-	-	-	-	-	-	-	-	
	234	-	-	-	-	-	-	-	-	-	-	-	-	-	-	-	-	-	-	-	
	235	-	-	-	-	-	-	-	-	-	-	-	-	-	-	-	-	-	-	-	
	236	-	-	-	-	-	-	-	-	-	-	-	-	-	-	-	-	-	-	-	
	237	-	-	-	-	-	-	-	-	-	-	-	-	-	-	-	-	-	-	-	
	238	-	-	-	-	-	-	-	-	-	-	-	-	-	-	-	-	-	-	-	
	239	-	-	-	-	-	-	-	-	-	-	-	-	-	-	-	-	-	-	-	
	240	-	-	-	-	-	-	-	-	-	-	-	-	-	-	-	-	-	-	-	
	241	-	-	-	-	-	-	-	-	-	-	-	-	-	-	-	-	-	-	-	
	242	-	-	-	-	-	-	-	-	-	-	-	-	-	-	-	-	-	-	-	
	243	-	-	-	-	-	-	-	-	-	-	-	-	-	-	-	-	-	-	-	



PLAN BELOW ROOF



IMPORTANT NOTE
THROUGHOUT THE ENTIRE PRESENT BUILDING WHEREVER NEW OPENINGS ARE CUT IN PRESENT WALLS OR NEW WALLS OR SECTIONS OF WALLS ARE BUILT, THEY SHALL BE PLASTERED, PAINTED AND TRIMMED TO MATCH ADJACENT WORK, UNLESS SHOWN OR NOTED TO BE OTHERWISE.



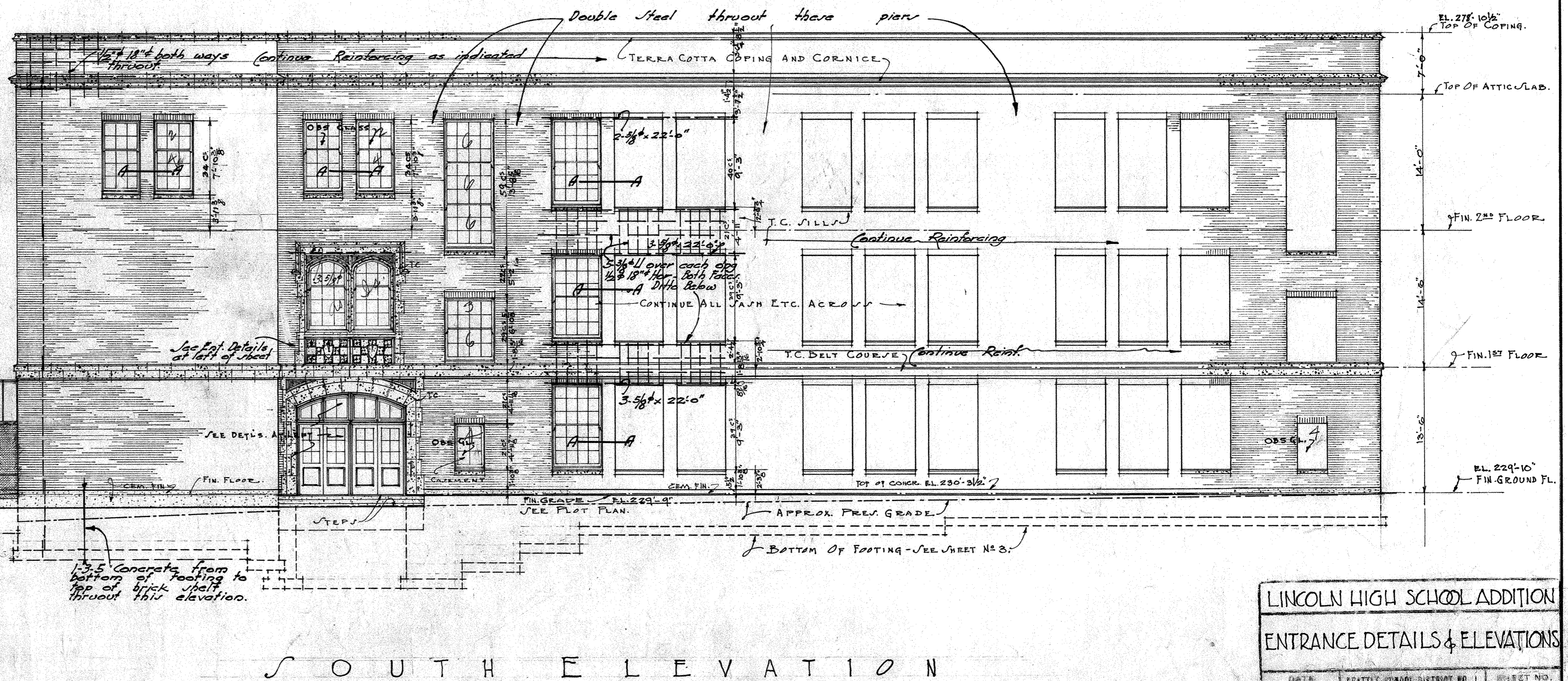
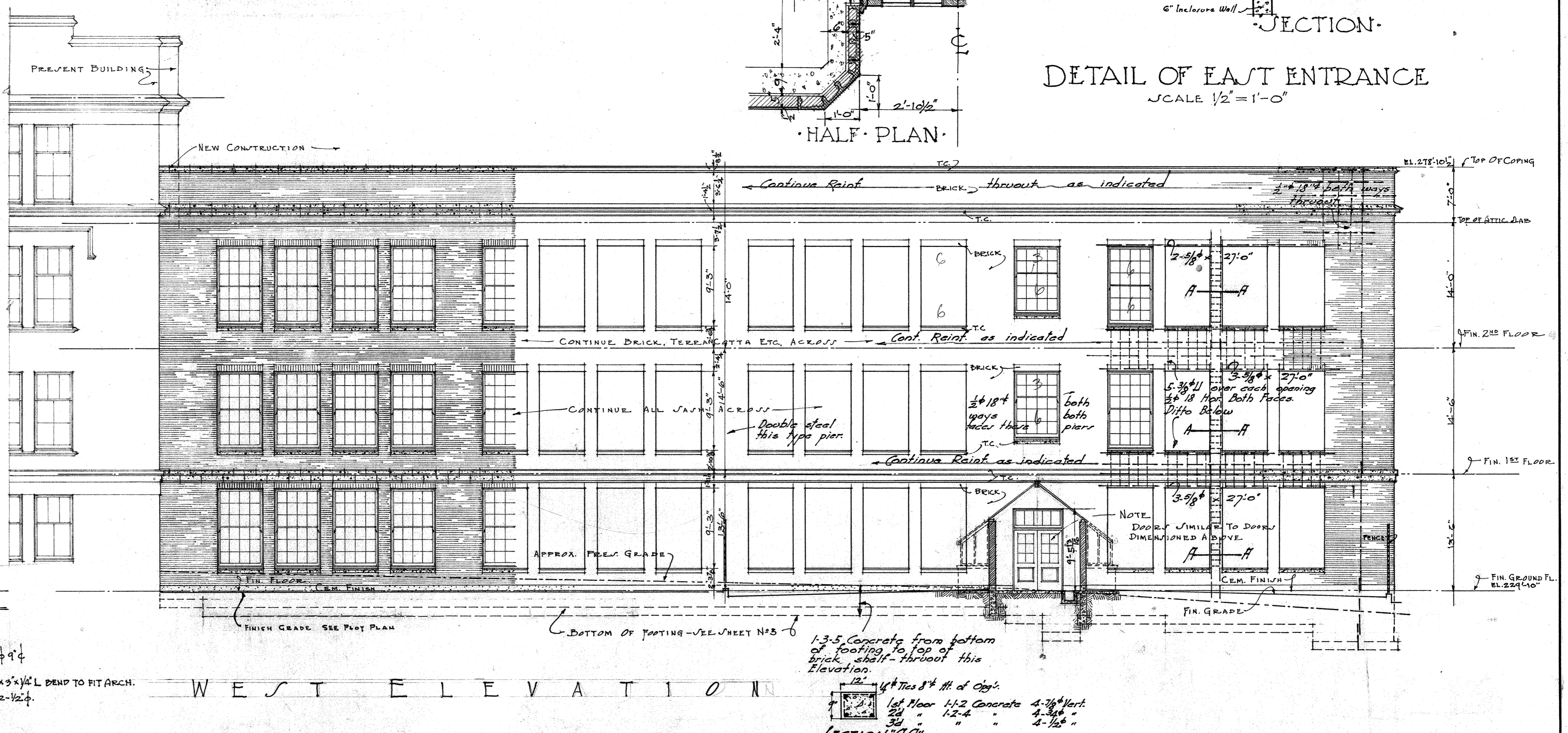
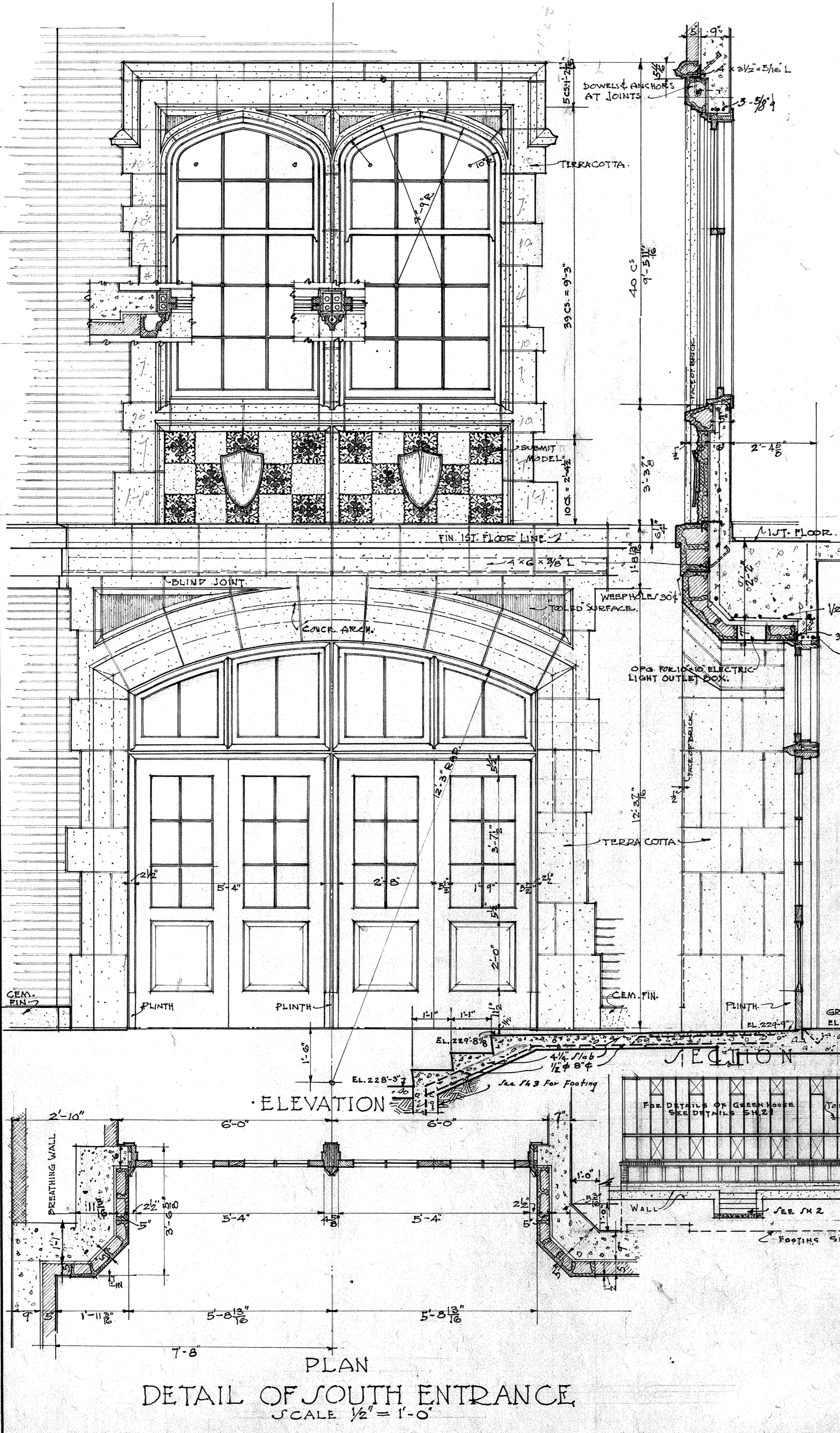
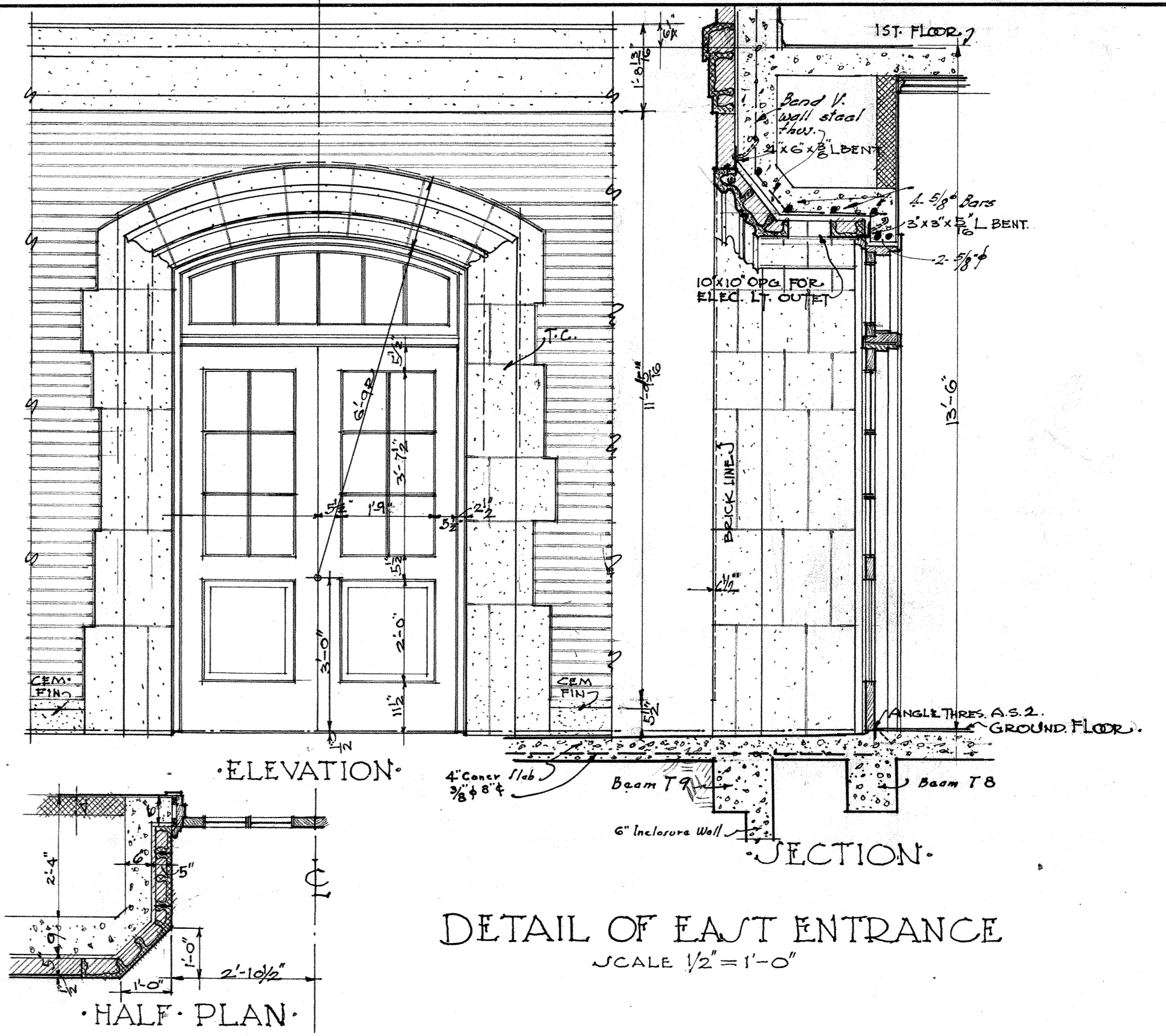
SECOND FLOOR PLAN.
SCALE - 1/8" = 1'-0"

LINCOLN HIGH SCHOOL ADDITION
SECOND FLOOR PLAN

DATE MAY 14, 1930	SEATTLE SCHOOL DISTRICT NO. 1 F. A. NARAMORE, ARCHITECT	SHEET NO. 9
NOTE: CONTRACTOR MUST VERIFY ALL MEASUREMENTS AT BUILDING.		
CHECKED BY E. J. J.	810 DEXTER AVENUE SEATTLE, WASH.	APPROVED M.C.

015-F-0104

015-0106

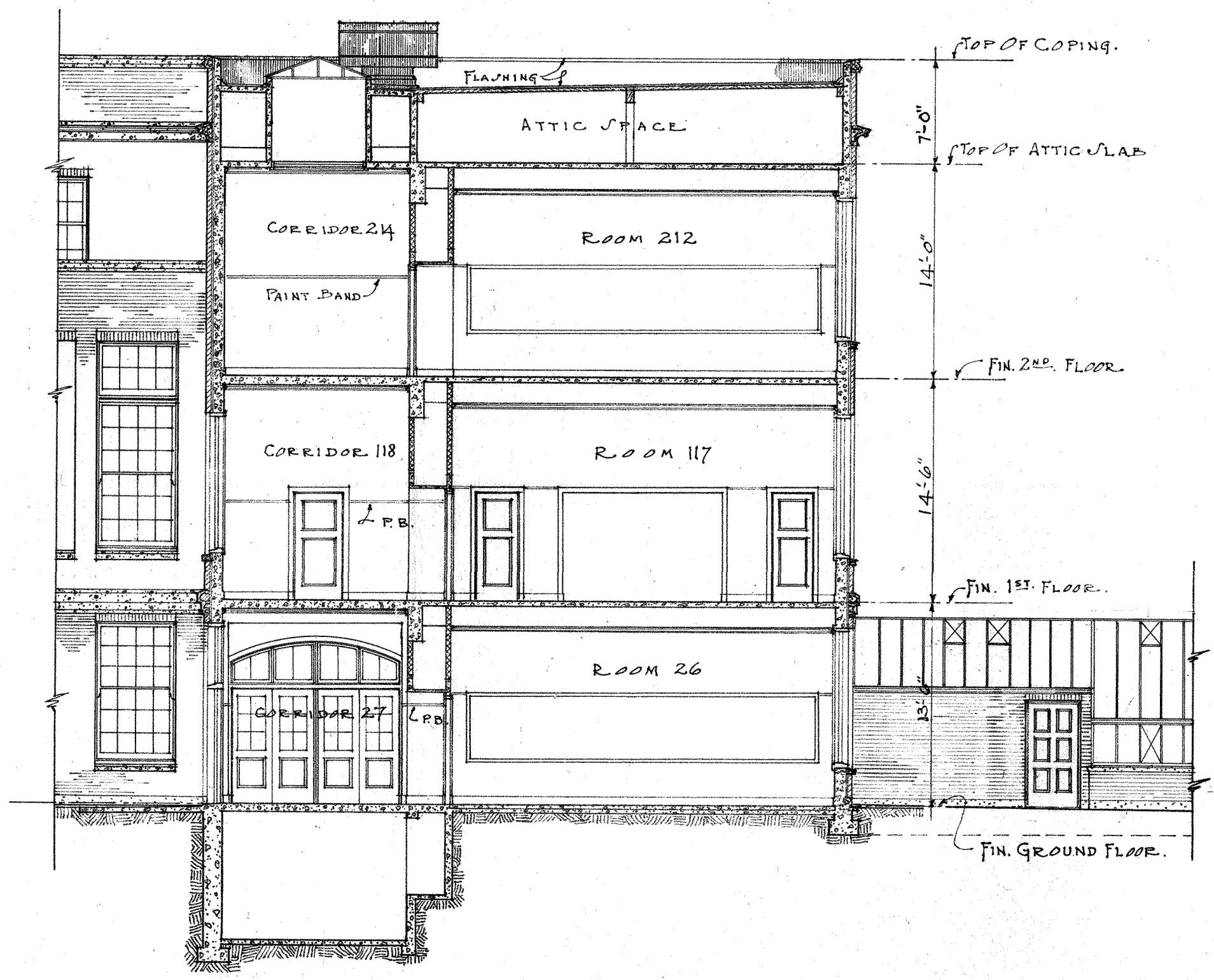


LINCOLN HIGH SCHOOL ADDITION
ENTRANCE DETAILS & ELEVATIONS

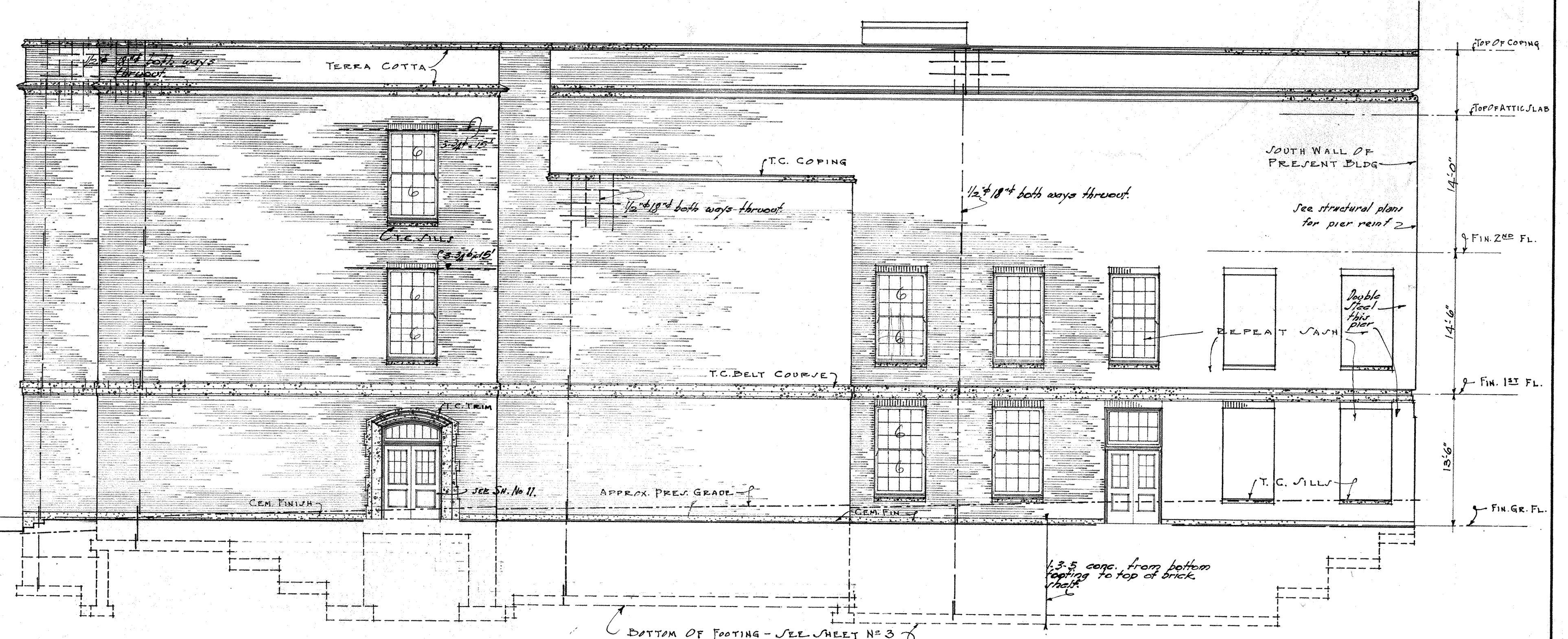
DATE MAY 14, 1930	SEATTLE SCHOOL DISTRICT NO. 1	PROJECT NO. 11
DESIGNED BY C.V.R.	F. A. NARAMORE,	ARCHITECT
CHECKED BY E. J. J.	810 DEXTER AVENUE SEATTLE, WASH.	APPROVED M.L.

NOTE:
CONTRACTOR MUST VERIFY ALL
MEASUREMENTS AT BUILDING.

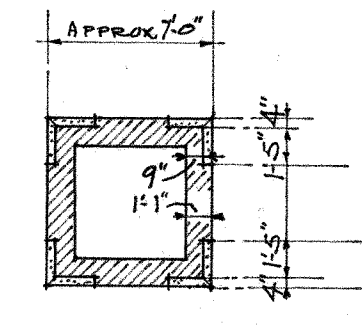
015-F-0106



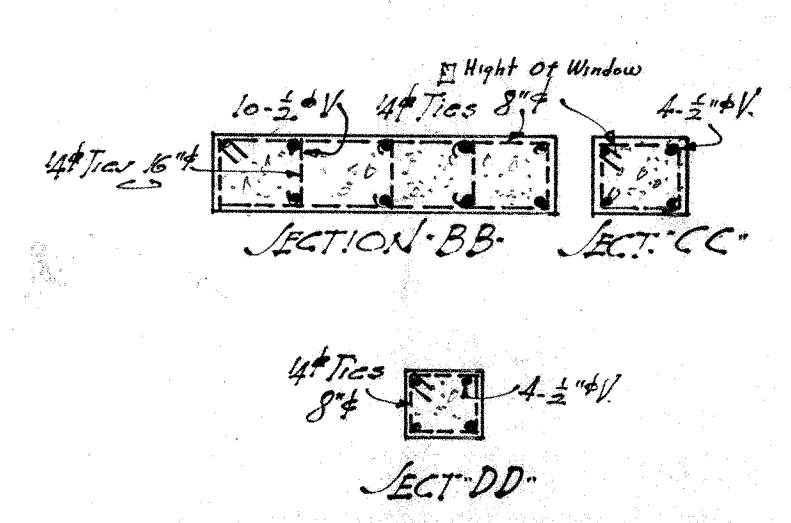
SECTION (LOOKING SOUTH)
SCALE 1/8" = 1'-0"



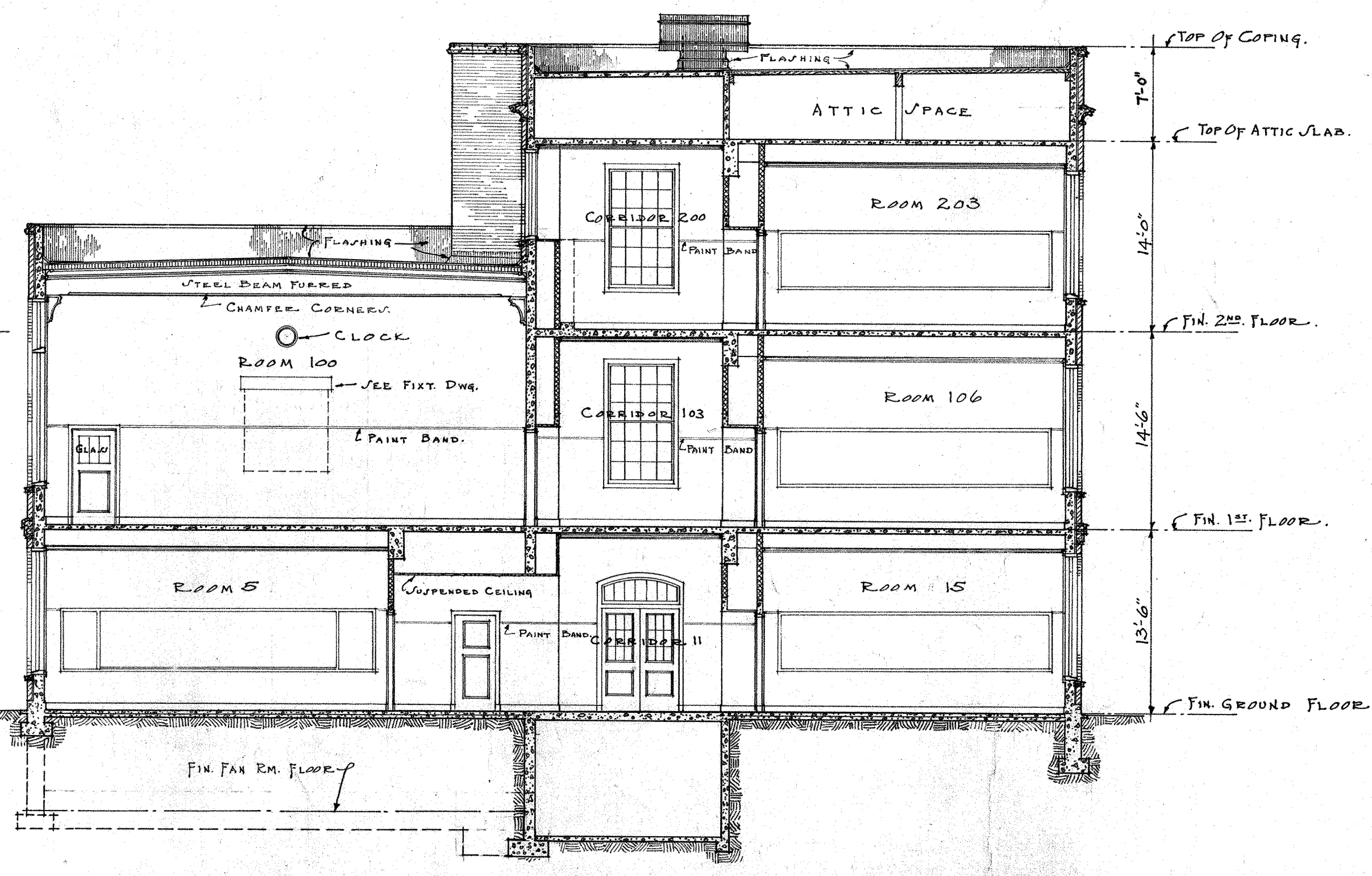
EAST ELEVATION
SCALE 1/8" = 1'-0"



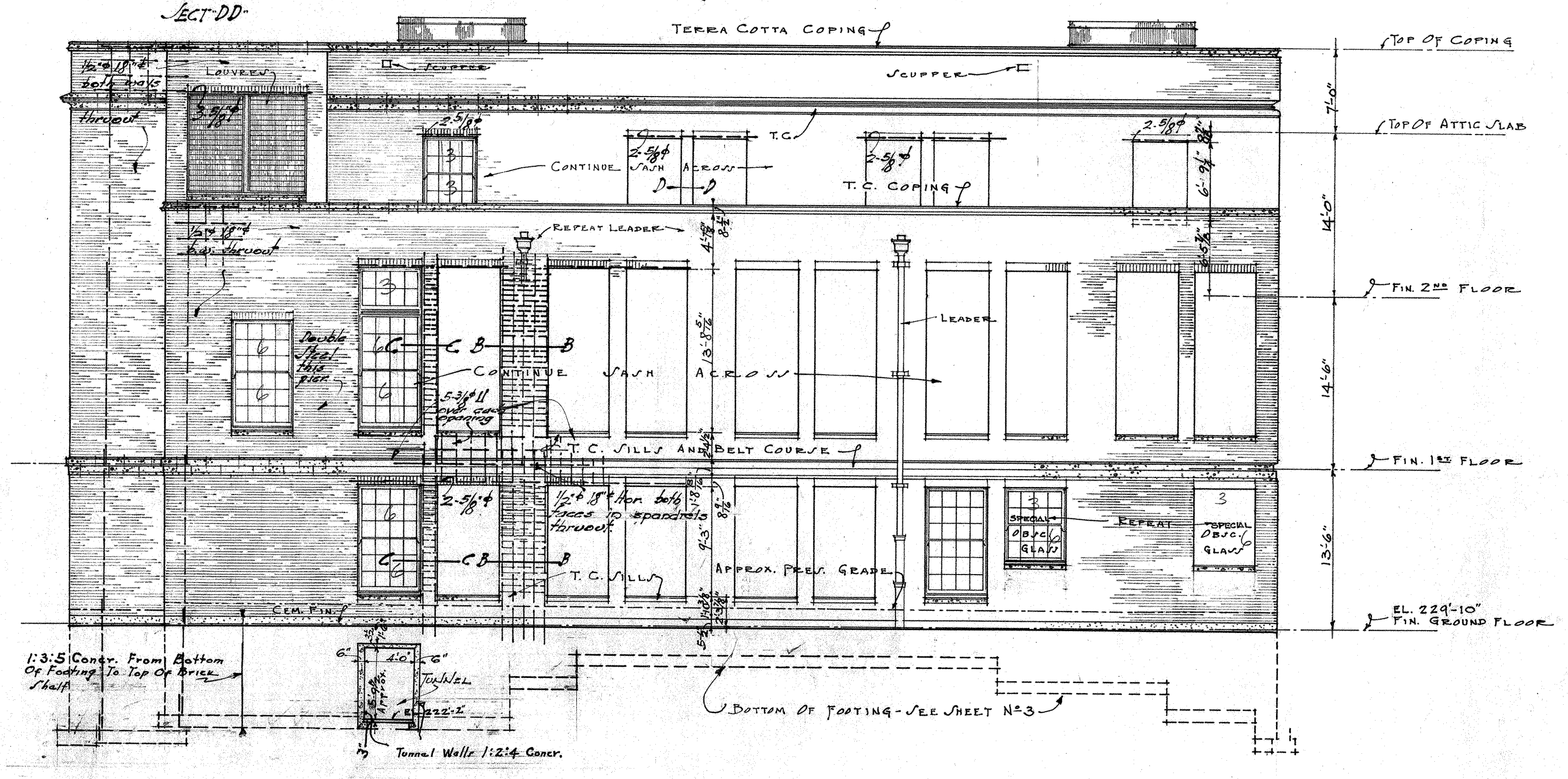
PLAN AT 'A'
SCALE 1/8" = 1'-0"



GENERAL WALL NOTE:
All openings in concrete walls to have 2-#5 bars or their equivalent, spaced all sides unless otherwise noted. Lap bars at least 12" all bars, extend to top 30" of corner. All vertical bars to be bent over top of concrete. All horizontal bars to be bent over side of concrete. All walls to have at least 2" of concrete on both sides of any opening. Provide 2-#4 stirrups if any of all corner joints to walls unless otherwise noted. Provide 2-#4 stirrups in the region wall above door and over top of door. Provide 2-#4 bars to be placed in center of wall except when wall returns north - then, place about 2" from top and bottom. Provide 2-#4 bars in ceiling, same size & number as steel in the wall. This applies to all walls, all corners, & number as steel in the wall. Steel indicated as a bearing of elevation is typical for that elevation and is to be continued through by elevation. Provide continuous steel at each story in iron with the heads of the windows. Details to be of size indicated on window details.



SECTION (LOOKING EAST)
SCALE 1/8" = 1'-0"



NORTH ELEVATION
SCALE 1/8" = 1'-0"

LINCOLN HIGH SCHOOL ADDITION			
ELEVATIONS			
DATE	SEATTLE SCHOOL DISTRICT NO. 1	SHEET NO.	12
MAY 16, 1930	F. A. NARAMORE,	ARCHITECT	
DRAWN BY	C.V.B.	519 DEXTER AVENUE	
CHECKED BY	E.W.	BRATTLE, WY.	

NOTE:
CONTRACTOR MUST VERIFY ALL
MEASUREMENTS AT BUILDING.

015-F-0107