



# APPLICATION

for painting the north side of the Maud building.

The front of the Maud building has been left untagged. there is very little brick on the front and we will keep it clean.

It is our intent to paint up to approximately 10 feet above grade to cover the graffiti. We intend to use a paint color to match as best we can the existing brick. Graffiti has been an ongoing problem over the years but especially this year. we have always maintained the building and had the graffiti removed. However, this has taken a toll on the brick and can no longer be removed. It should be noted that this building, therefor, brick is over 130 years old. We researched a clear coat product to be applied after cleaning and were told that the brick is to damaged to make this feasible. Per Paul Tessier, Masonry Product Sales we received the following response from his site visit.

AJ,

Pursuant to our meeting to review the North Elevation brick façade, I offer the following comments.

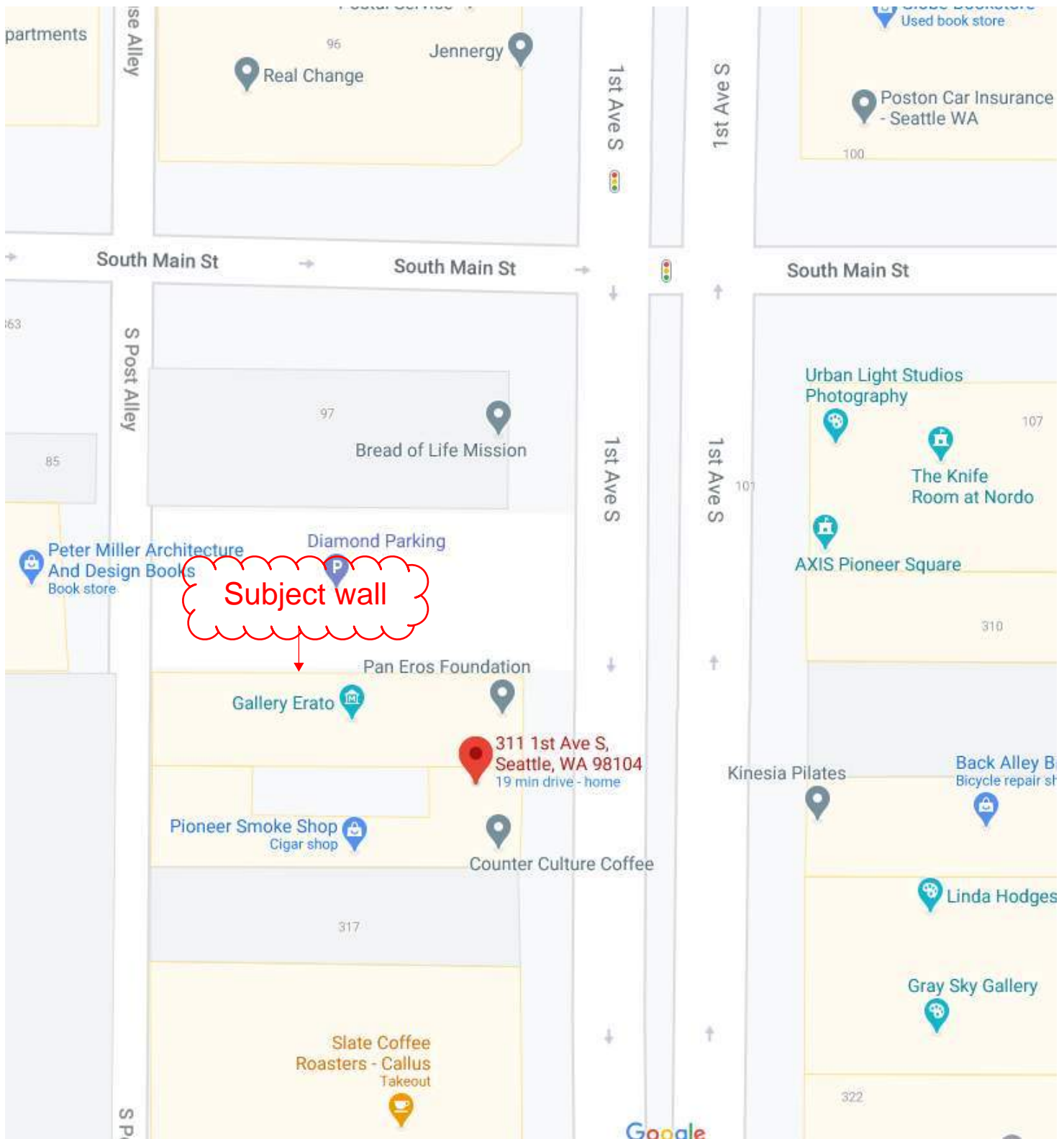
Due to the removal process of the previous graffiti and the damage done to brick and mortar, you need to consider tuck-pointing the brick and at the same time flip the brick with the damaged faces. Applying a product like Blok-Guard & Graffiti Control Ultra(PDS/SDS attached) to the current condition of the brick veneer would afford you minimal results at best.

Regards,

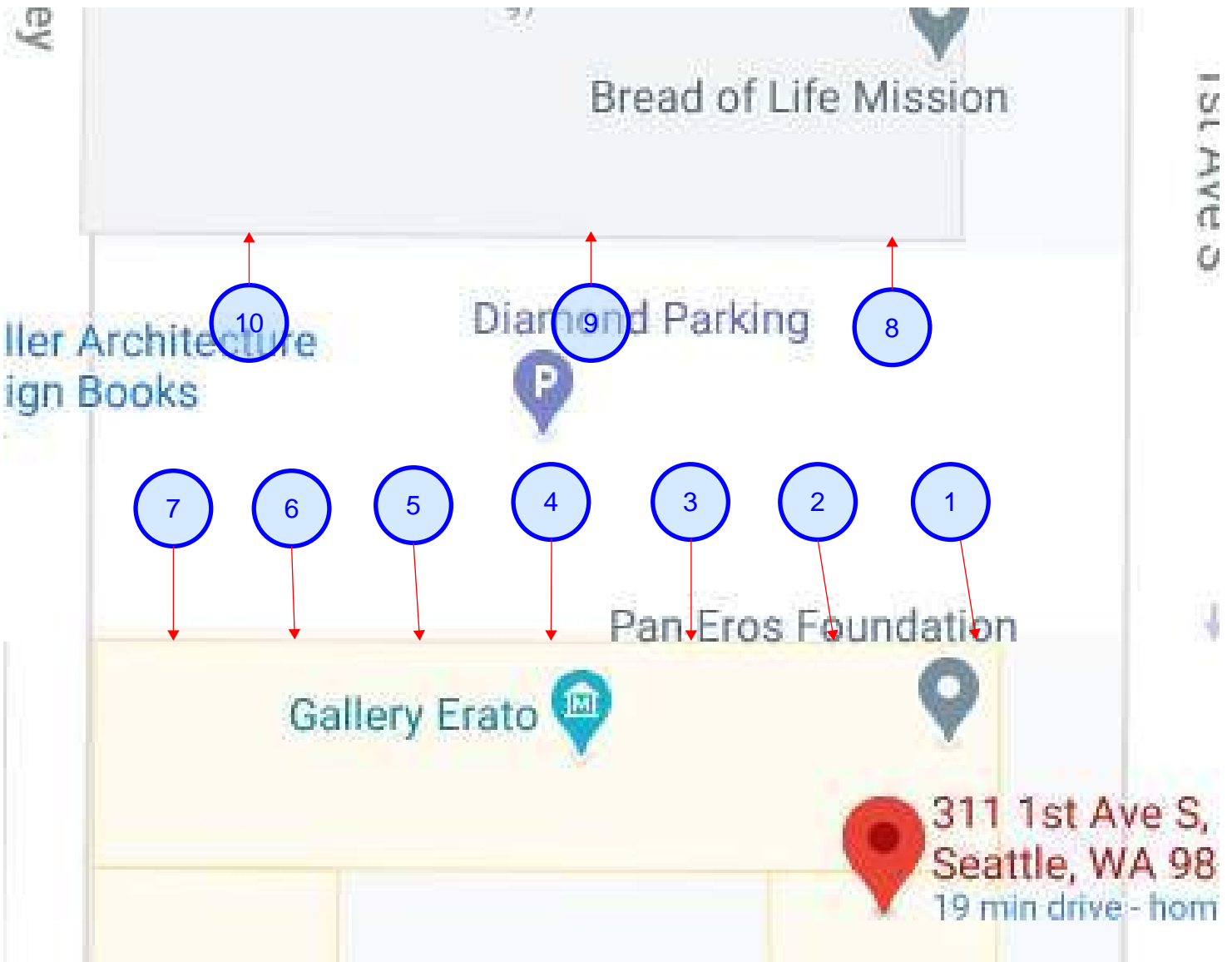
Paul Tessier

Masonry Products Sales

It is due to this response and our own visual inspection we have decided to paint the wall to cover the graffiti. It is our intentions to continue to paint over the graffiti until is has built up enough of a thickness to allow for future cleanings. We will keep pain on hand so the color will continue to match until we reach the point, we can clean the brick.



The subject wall is located above on the map. the wall is technically owned by Diamond parking but the Maud building has been maintaining it. over the years we have been tagged a number of times and have been cleaning it. However we are to the point that the damage from cleaning has become to great to continue that method. we are now asking to paint over the graffiti until we get a solid epoxy base built up to go back to cleaning. we understand that this is not optimal, but it is our best alternative at this point.



The numbers above represent the pictures on the following pages.

The Maud building owners have no control over the access to the parking lot that is owned by another entity.



1 - Tagging at north east corner of building. Third time since governors work from home order.



2 - Tagging heading west on building. Third time since governors work from home order.



3 - Tagging continuing west on north wall of building. Third time since governors work from home order.



4 - Tagging on north wall near the middle of building. .



5 - Tagging on north wall continuing at the middle of building. .



6 - Tagging on north wall continuing at the middle of building. .

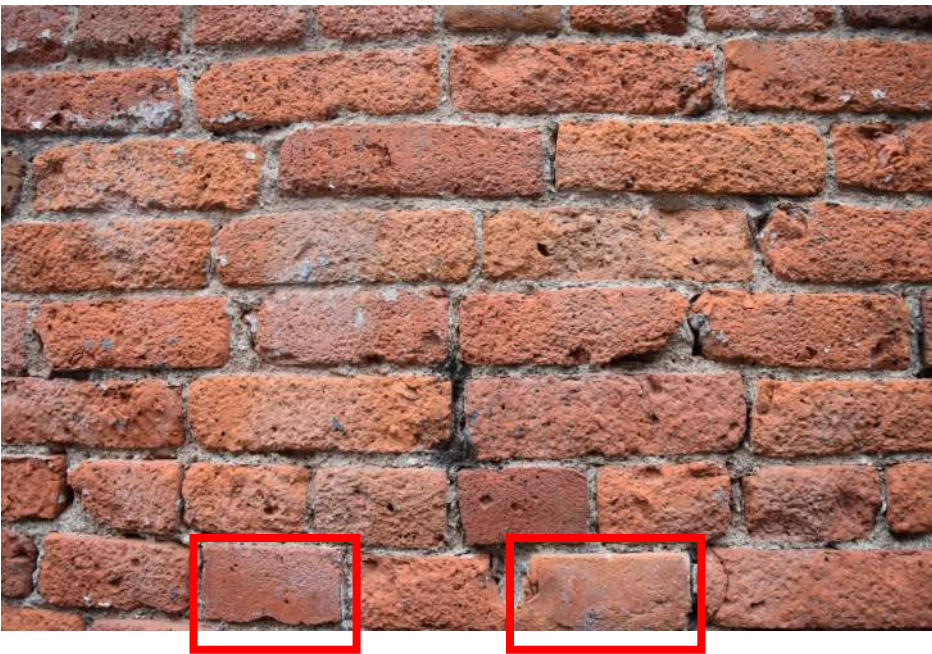


7 - Tagging on north wall at west end of building.



Close of of the damaged brick. notice the stones are now exposed from previous power washings to remove graffiti, damage is unreparable. Bricks would be required to be removed and replaced which is not consistent to the intent. these brick are nearly 130 years old and are fragile.





Close of of the damaged brick. There are only 2 bricks in this picture that have the original face of brick remaining. the remain brick have exposed sand and gravel.



Close of of the damaged brick. Only the bottom row of brick in this picture has minimal damage. The remain brick have exposed sand and gravel which will result in further damage to remove the graffiti.



Close of of the damaged brick. There is no brick in this picture that is un-damage. The brick has exposed sand and gravel which will result in further damage to remove the graffiti.



8 - This is the south east corner of the Bread of Life Mission building across the parking lot. as you can see it has been painted and continues to to be tagged. they repaint ever few months over the tagged area with no additional destruction to the brick surface.



9 - This is the middle of the Bread of Life Mission building across the parking lot.



10 - This is the south west corner of the Bread of Life Mission building across the parking lot.

Below are the paint color option available for the Behr Epoxy brick paints. Option 1 below looks the closest but we are open to selecting another color if the board feels that there is a better option.

The product data sheet and painting instruction are also below. for your review. Additionally, we had Jake Boyer of Prosooco review the wall for application of a clear coat anti graffiti product, following is his response.

Pursuant to our meeting to review the North Elevation brick façade, I offer the following comments.

Due to the removal process of the previous graffiti and the damage done to brick and mortar, you need to consider tuck-pointing the brick and at the same time flip the brick with the damaged faces. Applying a product like Blok-Guard & Graffiti Control Ultra(PDS/SDS attached) to the current condition of the brick veneer would afford you minimal results at best.

As a result, we have elected to go with a painting option and seek your approval.

Sincerely,

Gregg Percich





## Elastomeric Masonry, Stucco & Brick Paint

No. 67 Deep Base  
No. 68 White

- Exterior Waterproofing Finish
- 100% Acrylic Latex
- Limited Lifetime Guarantee\*
- Withstands 98 mph Wind-Driven Rain
- Low Sheen Finish
- Bridges Hairline Cracks
- Mildew Resistant Finish
- Stretches Up To 600% to Resist Cracking



**2 Coats Required**  
for Optimal Durability



**Spread Rate:**  
75-125 Sq. Ft.



**Dry Time:**  
4-6 Hr. Dry to Touch  
24 Hr. Recoat



**Soap & Water**  
Clean-Up

READY TO USE OR ADD TINTING COLORANT

### WHERE TO USE

Properly prepared exterior vertical surfaces such as: Stucco, Masonry, Concrete, Concrete Block or Brick as well as adjacent Wood and Metal surfaces. *Not for use on horizontal surfaces subject to foot traffic.*

### PREPARATION

**(Proper surface preparation is required.)** Allow new stucco and masonry to cure for 30 days before painting. Remove all loose, peeling paint. Powerwash to remove chalk. Remove dirt and grease with a product such as BEHR PREMIUM® NO. 990 Concrete & Masonry Degreaser & Cleaner; remove mildew stains with a mildew stain removing product. On galvanized metal, use a diluted solution of a product such as BEHR PREMIUM® NO. 991 Concrete & Masonry Cleaner & Etcher to prepare the surface. Follow all label instructions. Rinse thoroughly and allow a minimum of 24 hours to dry. Cracks and gaps wider than 1/16" (1.5 mm) should be routed open, dusted and patched with an elastomeric patching compound. Use an acrylic caulk around windows, doors and trim. Scuff sand glossy surfaces. Prime all uncoated, patched, chalky, wood and/or metal surfaces with a product such as BEHR PREMIUM PLUS® NO. 436 Exterior Multi-Surface Primer & Sealer.

### APPLICATION

DO NOT THIN. Intermix all cans of same product to ensure color uniformity. Stir paint before and occasionally during application. Use product when air and surface temperature are 50-90°F (10-32°C). Do not use if rain or heavy dew is expected within 24 hours. Apply

using a high quality 1 1/4" nap roller, nylon/polyester brush or airless sprayer (.025-.029" spray tip). **A second coat must be applied** at the same spread rate as the first. A third coat may be required to achieve a final dry mil thickness of about 10-15 mils. If airless spraying, use equipment with a minimum of 2500 PSI at the tip. Maintain a wet edge to avoid lap marks. Do not re-spread or re-work paint.

### DRY TIME

Longer dry time required in cooler temperatures and higher humidity. After two weeks, cured paint may be cleaned with a mild, non-abrasive liquid detergent.

### DISPOSAL

Properly dispose of all soiled rags and **protect unused product from freezing.** For disposal of empty containers and unused product contact your household refuse collection service.

**WARNING!** If you scrape, sand or remove old paint, you may release lead dust. LEAD IS TOXIC. EXPOSURE TO LEAD DUST CAN CAUSE SERIOUS ILLNESS, SUCH AS BRAIN DAMAGE, ESPECIALLY IN CHILDREN. PREGNANT WOMEN SHOULD ALSO AVOID EXPOSURE. Wear a NIOSH-approved respirator to control lead exposure. Clean up carefully with a HEPA vacuum and a wet mop. Before you start, find out how to protect yourself and your family by contacting the National Lead Information Hotline at 1-800-424-LEAD or log on to [www.epa.gov/lead](http://www.epa.gov/lead).

**WARNING!** Sanding or scraping pressure treated lumber may be hazardous; wear appropriate protection

#### \*LIMITED LIFETIME GUARANTEE

Behr Process Corporation guarantees that this product will provide a waterproof finish and hide hairline cracks existing at time of application when applied and cared for according to label directions. This guarantee shall be effective for so long as you reside in your home and is made to the original residential consumer paint purchaser. This guarantee is not transferable. This guarantee does not cover water intrusion due to structural defects or caulk failure. Color fading and chalking will occur naturally over time. If this product fails to perform as specified, Behr Process Corporation will, at its option and upon proof-of-purchase, either furnish an equivalent amount of new paint to you, or refund the purchase price of this product. **This guarantee excludes (1) labor and costs of labor for the application or removal of any paint and (2) any incidental or consequential damages, whether based upon breach of express or implied warranty, negligence, strict liability or any other legal theory.** Some states do not allow the exclusion or limitation of incidental or consequential damages, so the above limitation or exclusion may not apply to you. This guarantee gives you specific legal rights, and you may also have other rights, which vary from state to state.

To consult with a Behr Certified Coatings Professional, call 1-800-854-0133 Ext. 2 (U.S.A. only).

**WARNING!** This product contains chemicals known to the state of California to cause cancer and birth defects or other reproductive harm.

**WARNING! IRRITANT! HARMFUL IF SWALLOWED. CONTAINS: ETHYLENE GLYCOL. MAY CAUSE EYE, NOSE AND THROAT IRRITATION. AVOID CONTACT WITH SKIN AND EYES AND AVOID BREATHING OF VAPORS AND SPRAY MIST. WEAR EYE PROTECTION AND PROTECTIVE CLOTHING. USE ONLY WITH ADEQUATE VENTILATION.** To avoid breathing vapors and spray mist, open windows and doors or use other means to ensure fresh air entry during application and drying. If you experience eye watering, headaches or dizziness, increase fresh air. If properly used, a respirator (NIOSH approved for organic vapor with P series particulate pre-filter) may offer additional protection; obtain professional advice before using. A dust mask does not provide protection against vapors. Avoid contact with eyes and skin. Wash thoroughly after handling. Close container after each use. **FIRST AID:** If you experience difficulty in breathing, leave the area to obtain fresh air. If continued difficulty is experienced, get medical assistance immediately. In case of eye contact, flush immediately with plenty of water for at least 15 minutes and get medical attention; for skin, wash thoroughly with soap and water. If swallowed, get medical attention immediately.

**CAUTION: KEEP OUT OF REACH OF CHILDREN - DO NOT TAKE INTERNALLY.**



©2012 Behr Process Corporation  
Santa Ana, CA 92704 U.S.A. • [behr.com](http://behr.com)  
V.O.C. <50 g/L • REV. 8/11

## Where to Use

Properly prepared exterior vertical surfaces such as: Stucco, Masonry, Concrete, Concrete Block or Brick as well as adjacent Wood and Metal surfaces. *Not for use on horizontal surfaces subject to foot traffic.*

## Usage Summary

### Preparation

- Allow new stucco and masonry to cure for 30 days before painting.
- Remove all loose, peeling paint. Power wash to remove chalk. Remove dirt and grease with a concrete & masonry degreaser & cleaner product.
- Remove mildew stains with a mildew stain removing product.
- On galvanized metal, use a diluted solution of a product such as concrete & masonry cleaner & etcher to prepare the surface. Rinse thoroughly and allow a minimum of 24 hours to dry.
- Cracks and gaps wider than 1/16" (1.5 mm) should be routed open, dusted and patched with an elastomeric patching compound. Use an acrylic caulk around windows, doors and trim. Scuff sand glossy surfaces.
- Prime all uncoated, patched, chalky, wood and/or metal surfaces with a product such as BEHR PREMIUM PLUS® NO. 436 Exterior Multi-Surface Primer & Sealer.

### Application

- DO NOT THIN.
- Intermix all cans of same product to ensure color uniformity. Stir paint before and occasionally during application.
- Use product when air and surface temperature are 50-90°F (10-32°C). Do not use if rain or heavy dew is expected within 24 hours.
- Apply using a high quality 1 1/4" nap roller, nylon/polyester brush or airless sprayer (.025"-0.029" spray tip).
- **A second coat must be applied** at the same spread rate as the first.
- A third coat may be required to achieve a final dry film thickness of about 10-15 mils.
- If airless spraying, use equipment with a minimum of 2,000 PSI at the tip. Maintain a wet edge to avoid lap marks.
- Do not re-spread or re-work paint.

### Dry Time

- Longer dry time required in cooler temperatures and higher humidity.
- After two weeks, cured paint film may be cleaned with a mild, non-abrasive liquid detergent.



The Best Graffiti Deterrent is Immediate Graffiti Removal

February 10, 2021

Pioneer Review Board  
% Jackson Main Architecture  
311 First Ave South  
Seattle WA 98104

RE: The cleaning of brick surface at Maud Building (311 1st Ave South, Seattle WA 98104)

To begin the graffiti removal process, we apply the solution to the surface where the graffiti is located. For Maud, the solution was applied on the brick wall. The solution will sit on the surface for an estimated time of 30-45 minutes. It does depend on the color and thickness of the paint. During that period of time, we work on the surface with a soft brush gently scrubbing the mixture in order to loosen the paint. After the solution sits and the gentle agitation, we use towels to remove as much paint and solution as possible. Then we use a hot water pressure washing machine to carefully rinse off the rest of the graffiti. If needed, we will repeat the procedure until the graffiti is completely removed.

If there are any further questions about the cleaning process please contact Alex at 206-396-3451.

Sincerely,

Whitney Garland  
Office Manager  
206-525-0301  
graffitiremoval@corriscleaning.com



SHERWIN-WILLIAMS®

# Product Submittal

*Maud Building North Side*

**JACKSON MAIN  
ARCHITECTURE**

Presented By:  
**Scott Winslow**  
Sales Representative

(206) 890-6011  
[scott.a.winslow@sherwin.com](mailto:scott.a.winslow@sherwin.com)

SHERWIN-WILLIAMS  
1436 LEARY WAY, NW  
SEATTLE, WA 98107 5135  
(206) 789-5190

March 04, 2021



**SHERWIN-WILLIAMS®**

# Product Submittal

**Project:** Maud Building North Side  
**Customer:** JACKSON MAIN ARCHITECTURE  
311 1ST AVE S, SEATTLE, WA, 981042537



**JACKSON MAIN ARCHITECTURE**  
***Maud Building North Side***  
***March 04, 2021***

Dear JACKSON MAIN ARCHITECTURE:

Thank you for considering Sherwin-Williams products for the Maud Building North Side project. Included in this package is the Sherwin-Williams submittal for the above referenced project.

After examining the north wall of the Maud Building we do not recommend an anti-graffiti coating and cannot warranty any products due to the condition of the brick wall. For the anti-graffiti coating to perform it requires a sound and less rough surface. Anti-Graffiti coatings require a solvent wipe or pressure washing to remove graffiti from the surface of the coating which would not be feasible. We also cannot warranty any products used on the wall for the same reason. As a temporary fix we recommend using Loxon XP matched as close as possible to the brick color. This will be a temporary masonry coating to cover the graffiti after it is applied. The masonry coating may fail prematurely due to the soft exposed material in the brick and mortar.

Should you require assistance or have any questions or concerns, please contact me at (206) 890-6011 or e-mail me at [scott.a.winslow@sherwin.com](mailto:scott.a.winslow@sherwin.com).

**Scott Winslow**

Sales Representative

(206) 890-6011

[scott.a.winslow@sherwin.com](mailto:scott.a.winslow@sherwin.com)

SHERWIN-WILLIAMS

1436 LEARY WAY, NW, SEATTLE, WA 98107 5135



## Exterior Finishes

### Brick

**Coat 1:** LX11W0051 - LXN XP EW

- Location: Brick - Secondary Location: Mortar

*Notes: Due to the condition of the substrate, no labor or material warranty can be applied to the project.*

**LX11W0051**

Created with  
 **COLORSNAP** | VISUALIZER





**SHERWIN-WILLIAMS.**

## Basic Surface Preparation

Coating performance is directly affected by surface preparation. Coating integrity and service life will be reduced because of improperly prepared surfaces. As high as 80% of all coating failures can be directly attributed to inadequate surface preparation that affects coating adhesion. Proper product selection, surface preparation, and application affect coating performance. Coating integrity and service life will be reduced because of improperly prepared surfaces. Selection and implementation of proper surface preparation ensures coating adhesion to the substrate and prolongs the service life of the coating system.

The majority of paintable surfaces are concrete, ferrous metal, galvanizing, wood and aluminum. They all require protection to keep them from deteriorating in aggressive environments. Selection of the proper method for surface preparation depends on the substrate, the environment, the coating selected, and the expected service life of the coating system. Economics, surface contamination, and the effect on the substrate will also influence the selection of surface preparation methods. Recognize that any surface preparation short of total removal of the old coating may compromise the service length of the system.

Verify the existence of lead based paints on the project. Buildings constructed after 1978 are less likely to contain lead based paints. If lead based paints are suspected on the project, all removal must be done in accordance with the EPA Renovation, Repair and Painting and all applicable state and local regulations. State and local regulations may be more strict than those set under the federal regulations. Verify that Owner has completed a Hazardous Material Assessment Report for the project prior to issuing of Drawings. Concluding that no lead based paints were found on project site, delete paragraph regarding lead based paints.

**WARNING!** Removal of old paint by sanding, scraping or other means may generate dust or fumes that contain lead. Exposure to lead dust or fumes may cause brain damage or other adverse health effects, especially in children or pregnant women. Controlling exposure to lead or other hazardous substances requires the use of proper protective equipment, such as a properly fitted respirator (NIOSH approved) and proper containment and cleanup. For more information, call the National Lead Information Center at 1-800-424-LEAD (in US) or contact your local health authority. Removal must be done in accordance with EPA Renovation, Repair and Painting Rule and all related state and local regulations. Care should be taken to follow all state and local regulations which may be more strict than those set under the federal RRP Rule.

No exterior painting should be done immediately after a rain, during foggy weather, when rain is predicted, or when the temperature is below 50°F, unless the products to be used are designed to be used in those environments.

---

**Aluminum – S-W 1:** Remove all oil, grease, dirt, oxide and other foreign material by cleaning per SSPC-SP1, Solvent Cleaning.

**Block (Cinder and Concrete) – S-W 3:** Remove all loose mortar and foreign material. Surface must be free of laitance, concrete dust, dirt, form release agents, moisture curing membranes, loose cement, and hardeners. Concrete and mortar must be cured at least 28 days at 75°F. The pH of the surface should be between 6 and 9. On tilt-up and poured-in-place concrete, commercial detergents and abrasive blasting may be necessary to prepare the surface. Fill bug holes, air pockets, and other voids with a cement patching compound (per ASTM D4261).

**Brick – S-W 4:** Must be free of dirt, loose and excess mortar, and foreign material. All brick should be allowed to weather for at least one year followed by wire brushing to remove efflorescence. Treat the bare brick with one coat of Loxon Conditioner.

**Concrete and Masonry – Concrete, Poured – Exterior or Interior – S-W 5:** The preparation of new concrete surfaces is as important as the surface preparation of steel. The following precautions will help assure maximum performance of the coating system and satisfactory coating adhesion:

**1. Cure** – Concrete must be cured prior to coating. Cured is generally defined as concrete poured and aged at a material temperature of at least 75°F for at least 28 days unless specified products are designed for earlier application.

**2. Moisture** – Reference ASTM F1869-98 Moisture Test by use of Calcium Chloride or ASTM D4263 Plastic Sheet Method. Concrete must be free from moisture as much as possible (it seldom falls below 15%). Vapor pressures, temperature, humidity, differentials, and hydrostatic pressures can cause coatings to prematurely fail. The source of moisture, if present, must be located, and the cause corrected prior to coating.

**3. Temperature** – Air, surface and material temperatures must be in keeping with requirements for the selected product during and after coating application, until coating is cured.

**4. Contamination** – Remove all grease, dirt, paint, oil, laitance, efflorescence, loose mortar, and cement by the recommendations listed in the surface preparation section.

**5. Surface Condition** – Hollow areas, bug holes, voids, honeycombs, fin form marks, and all protrusions or rough edges are to be ground or stoned to provide a continuous surface of suitable texture for proper adhesion of the coating. Imperfections may require filling, as specified, with a recommended Sherwin-Williams product.

**6. Concrete Treatment** – Hardeners, sealers, form release agents, curing compounds, and other concrete treatments should be removed to ensure adequate coating adhesion and performance.

**Methods of Surface Preparation on Concrete per SSPC-SP13/NACE 6 or ICRI 03732 Surface Cleaning Methods: Vacuum cleaning, air blast cleaning, and water cleaning per ASTM D4258.**

Used to remove dirt, loose material, and/or dust from concrete.

**Detergent water cleaning and steam cleaning per ASTM D4258.**

Used to remove oils and grease from concrete. Prior to abrasive cleaning, and after abrasive cleaning, surfaces should be cleaned by one of the methods described above.

**Mechanical Surface Preparation Methods:**

Dry abrasive blasting, wet abrasive blasting, vacuum assisted abrasive blasting, and centrifugal shot abrasive blasting per ASTM D4259. Used to remove contaminants, laitance, and weak concrete, to expose subsurface voids, and to produce a sound concrete surface with adequate profile and surface porosity.

**High-pressure water cleaning or water jetting per SSPC-SP12-NACE5.**

Used to remove contaminants, laitance, and weak concrete, to expose subsurface voids, and to produce a sound concrete surface with adequate profile and surface porosity.

**Impact tool methods per ASTM D4259.**

Used to remove existing coatings, laitance, and weak concrete. Methods include scarifying, planing, scabbling, and rotary peening. Impact tools may fracture concrete surfaces or cause microcracking requiring surface repair.

**Power tool methods per ASTM D4259.**

Used to remove existing coatings, laitance, weak concrete, and protrusions in concrete. Methods include circular grinding, sanding, and wire brushing. These methods may not produce the required surface profile to ensure adequate adhesion of subsequent coatings.

**Chemical Surface Preparation Methods:**

**Acid etching per ASTM D4260.** Use to remove some surface contaminants, laitance, and weak concrete, and to provide a surface profile on horizontal concrete surfaces. This method requires complete removal of all reaction products and pH testing to ensure neutralization of the acid. Not recommended for vertical surfaces. Etching with hydrochloric acid shall not be used where corrosion of metal in the concrete is likely to occur. Adequate ventilation and safety equipment required.

1. Clean surface per ASTM D4268
2. Wet surface with clean water
3. Etch with 10-15% muriatic acid solution at the rate of 1 gallon per 75 square feet
4. Scrub with stiff brush
5. Allow sufficient time for scrubbing and until bubbling stops
6. If no bubbling occurs, surface is contaminated. Refer to ASTM D4258 or ASTM D4259
7. Rinse surface two or three times. Remove acid/water each time.
8. Surface should have a texture similar to medium grit sandpaper.
9. Neutralize surface with a 3% solution of tri-sodium phosphate and flush with clean water.
10. Allow to dry and check for excess moisture.

**Cement Composition Siding/Panels – S-W 6:** Remove all surface contamination by washing with an appropriate cleaner, rinse thoroughly and allow to dry. Existing peeled or checked paint should be scraped and sanded to a sound surface. Glossy surfaces should be sanded dull. Pressure clean, if needed, with a minimum of 2100 psi pressure to remove all dirt, dust, grease, oil, loose particles, laitance, foreign material, and peeling or defective coatings. Allow the surface to dry thoroughly. If the surface is new, test it for pH, many times the pH may be 10 or higher.

**Composition Board (Hardboard) – S-W 9:** Some composition boards may exude a waxy material that must be removed with a solvent prior to coating. Whether factory primed or unprimed, exterior composition board siding (hardboard) must be cleaned thoroughly and primed with an alkyl primer.

**Copper – S-W 7:** Remove all oil, grease, dirt, oxide and other foreign material by cleaning per SSPC-SP2, Hand Tool Cleaning.

**Drywall—Interior and Exterior – S-W 8:** Must be clean and dry. All nail heads must be set and spackled. Joints must be taped and covered with a joint compound. Spackled nail heads and tape joints must be sanded smooth and all dust removed prior to painting. Exterior surfaces must be spackled with exterior grade compounds.

**Galvanized Metal – S-W 10:** Allow to weather a minimum of 6 months prior to coating. Clean per SSPC-SP1 using detergent and water or a degreasing cleaner, then prime as required. When weathering is not possible or the surface has been treated with chromates or silicates, first Solvent Clean per SSPC-SP1 and apply a test area, priming as required. Allow the coating to dry at least one week before testing. If adhesion is poor, Brush Blast per SSPC-SP16 is necessary to remove these treatments.

**Plaster – S-W 11:** Must be allowed to dry thoroughly for at least 30 days before painting. Room must be ventilated while drying; in cold, damp weather, rooms must be heated. Damaged areas must be repaired with an appropriate patching material. Bare plaster must be cured and hard. Textured, soft, porous, or powdery plaster should be treated with a solution of 1 pint household vinegar to 1 gallon of water. Repeat until the surface is hard, rinse with clear water and allow to dry.

### **Steel/Ferrous Metal Substrates**

**SSPC-SP1- Solvent Cleaning:** Solvent cleaning is a method for removing all visible oil, grease, soil, drawing and cutting compounds, and other soluble contaminants. Solvent cleaning does not remove rust or mill scale. Change rags and cleaning solution frequently so that deposits of oil and grease are not spread over additional areas in the cleaning process. Be sure to allow adequate ventilation. Follow manufacturer's safety recommendations when using solvents. For complete instructions, refer to Steel Structures Paint Council Surface Preparation Specification No.1. (Refer to each products cleaning instructions. Many acrylic coatings will state; When cleaning the surface per SSPC-SP1, use only an emulsifying industrial detergent, followed by a water rinse. **Do not use hydrocarbon solvents for cleaning.**)

**SSPC-SP2 - Hand Tool Cleaning:** Hand Tool Cleaning removes all loose mill scale, loose rust, and other detrimental foreign matter. It is not intended that adherent mill scale, rust, and paint be removed by this process. Mil scale, rust, and paint are considered adherent if they cannot be removed by lifting with a dull putty knife. Before hand tool cleaning, remove visible oil, grease, soluble welding residues, and salts by the methods outlined in SSPC-SP1. For complete instructions, refer to Steel Structures Paint Council Surface Preparation Specification No.2.

**SSPC-SP3 - Power Tool Cleaning:** Power Tool Cleaning removes all loose mill scale, loose rust, and other detrimental foreign matter. It is not intended that adherent mill scale, rust, and paint be removed by this process. Mil scale, rust, and paint are considered adherent if they cannot be removed by lifting with a dull putty knife. Before power tool cleaning, remove visible oil, grease, soluble welding residues, and salts by the methods outlined in SSPC-SP1. For complete instructions, refer to Steel Structures Paint Council Surface Preparation Specification No.3.

**SSPC-SP5 / NACE 1 - White Metal Blast Cleaning:** A White Metal Blast Cleaned surface, when viewed without magnification, shall be free of all visible oil, grease, dirt, dust, mill scale, rust, paint, oxides, corrosion products, and other foreign matter. Before blast cleaning, visible deposits of oil or grease shall be removed by any of the methods specified in SSPC-SP 1 or other agreed upon methods. For complete instructions, refer to Joint Surface Preparation Standard SSPC-SP5/ NACE No.1.

**SSPC-SP6 / NACE 3 - Commercial Blast Cleaning:** A Commercial Blast Cleaned surface, when viewed without magnification, shall be free of all visible oil, grease, dirt, dust, mill scale, rust, paint, oxides, corrosion products, and other foreign matter, except for staining. Staining shall be limited to no more than 33 percent of each square inch of surface area and may consist of light shadows, slight streaks, or minor discoloration caused by stains of rust, stains of mill scale, or stains of previously applied paint. Before blast cleaning, visible deposits of oil or grease shall be removed by any of the methods specified in SSPC-SP 1 or other agreed upon methods. For complete instructions, refer to Joint Surface Preparation Standard SSPC-SP6/NACE No.3.

**SSPC-SP7 / NACE 4 - Brush-Off Blast Cleaning:** A Brush-Off Blast Cleaned surface, when viewed without magnification, shall be free of all visible oil, grease, dirt, dust, loose mill scale, loose rust, and loose paint. Tightly adherent mill scale, rust, and paint may remain on the surface. Mil scale, rust, and coating are considered adherent if they cannot be removed by lifting with a dull putty knife. Before blast cleaning, visible deposits of oil or grease shall be removed by any of the methods specified in SSPC-SP 1 or other agreed upon methods. For complete instructions, refer to Joint Surface Preparation Standard SSPC-SP7/NACE No.4.

**SSPC-SP10 / NACE 2 - Near-White Blast Cleaning:** A Near White Blast Cleaned surface, when viewed without magnification, shall be free of all visible oil, grease, dirt, dust, mill scale, rust, paint, oxides, corrosion products, and other foreign matter, except for staining. Staining shall be limited to no more than 5 percent of each square inch of surface area and may consist of light shadows, slight streaks, or minor discoloration caused by stains of rust, stains of mill scale, or stains of previously applied paint. Before blast cleaning, visible deposits of oil or grease shall be removed by any of the methods specified in SSPC-SP 1 or other agreed upon methods. For complete instructions, refer to Joint Surface Preparation Standard SSPCSP10/ NACE No.2.

**SSPC-SP11 - Power Tool Cleaning to Bare Metal:** Metallic surfaces that are prepared according to this specification, when viewed without magnification, shall be free of all visible oil, grease, dirt, dust, mill scale, rust, paint, oxide corrosion products, and other foreign matter. Slight residues of rust and paint may be left in the lower portions of pits if the original surface is pitted. Prior to power tool surface preparation, remove visible deposits of oil or grease by any of the methods specified in SSPC-SP 1, Solvent Cleaning, or other agreed upon methods. For complete instructions, refer to Steel Structures Paint Council Surface Preparation Specification No.11.

**SSPC-SP12 / NACE 5 - Surface Preparation and Cleaning of Metals by Waterjetting Prior to Recoating:** High- and Ultra-High Pressure Water Jetting for Steel and Other Hard Materials This standard provides requirements for the use of high- and ultra-high pressure water jetting to achieve various degrees of surface cleanliness. This standard is limited in scope to the use of water only, without the addition of solid particles in the stream. For complete instructions, refer to Joint Surface Preparation Standard SSPC-SP12/NACE No.5.

**SSPC-SP13 / NACE 6 or ICRI 03732 - Surface Preparation of Concrete:** This standard gives requirements for surface preparation of concrete by mechanical, chemical, or thermal methods prior to the application of bonded protective coating or lining systems. The requirements of this standard are applicable to all types of cementitious surfaces including cast-in-place concrete floors and walls, precast slabs, masonry walls and shotcrete surfaces. An acceptable prepared concrete surface should be free of contaminants, laitance, loosely adhering concrete, and dust, and should provide a dry, sound, uniform substrate suitable for the application of protective coating or lining systems. Depending upon the desired finish and system, a block filler may be required. For complete instructions, refer to Joint Surface Preparation Standard SSPC-SP13/NACE No.6 or ICRI 03732

**SSPC-SP14 / NACE 8 – Industrial Blast Cleaning:** This standard gives requirements for industrial blast cleaning of unpainted or painted steel surfaces by the use of abrasives. This joint standard allows defined quantities of mill scale and/or old coating to remain on the surface. An industrial blast cleaned surface, when viewed without magnification, shall be free of all visible oil, grease, dust, and dirt. Traces of tightly adherent mill scale, rust, and coating residue are permitted to remain on 10% of each unit area of the surface. The traces of mill scale, rust, and coating shall be considered tightly adherent if they cannot be lifted with a dull putty knife. Shadows, streaks, and discolorations caused by stains of rust, stains of mill scale, and stains of previously applied coating may be present on the remainder of the surface.

**SSPC-SP16 Brush-Off Blast Cleaning of Coated and Uncoated Galvanized Steel, Stainless Steels, and Non-Ferrous Metals:** This standard covers the requirements for brush-off blast cleaning of uncoated or coated metal surfaces other than carbon steel by the use of abrasives. These requirements include visual verification of the end condition of the surface and materials and procedures necessary to achieve and verify the end condition. A brush-off blast cleaned non-ferrous metal surface, when viewed without magnification, shall be free of all visible oil, grease, dirt, dust, metal oxides (corrosion products), and other foreign matter. Intact, tightly adherent coating is permitted to remain. A coating is considered tightly adherent if it cannot be removed by lifting with a dull putty knife.

**High- and Ultra-High Pressure Water Jetting for Steel and Other Hard Materials:**

**SSPC-SP WJ-1/NACE WJ-1:** Clean to Bare Substrate (WJ-1) is intended to be similar to the degree of surface cleanliness of SSPC-SP 5/NACE 1, except that stains are permitted to remain on the surface. This standard is used when the objective is to remove every trace of rust and other corrosion products, coating and mill scale.

**SSPC-SP WJ-2/NACE WJ-2:** Very Thorough Cleaning (WJ-2) is intended to be similar to the degree of surface cleanliness of SSPC-SP 10/NACE 2, except that tightly adherent material, rather than only stains, is permitted to remain on the surface. This standard is used when the objective is to remove almost all rust and other corrosion products, coating, and mill scale.

**SSPC-SP WJ-3/NACE WJ-3:** Thorough Cleaning (WJ-3) is intended to be similar to the degree of surface cleanliness of SSPC-SP 10/NACE 2, except that tightly adherent material, rather than only stains, is permitted to remain on the surface. This standard is used when the objective is to remove much of the rust and other corrosion products, coating, and mill scale, leaving tightly adherent thin films.

**SSPC-SP WJ-4/NACE WJ-4:** Light Cleaning (WJ-4) is intended to be similar to the degree of surface cleanliness of SSPC-SP 10/NACE 2, except that tightly adherent material, rather than only stains, is permitted to remain on the surface. This standard is used when the objective is to allow as much of the tightly adherent rust and other corrosion products, coating, and mill scale to remain as possible, Discoloration of the surface may be present.

**Water Blasting NACE Standard RP-01-72:** Removal of oil grease dirt, loose rust, loose mill scale, and loose paint by water at pressures of 2,000 to 2,500 psi at a flow of 4 to 14 gallons per minute.

**Stucco S-W 22 :** Must be clean and free of any loose stucco. If recommended procedures for applying stucco are followed, and normal drying conditions prevail, the surface may be painted in 30 days. The pH of the surface should be between 6 and 9.

**Wood—Exterior – S-W 23:** Must be clean and dry. Prime and paint as soon as possible. Knots and pitch streaks must be scraped, sanded, and spot primed before a full priming coat is applied. Patch all nail holes and imperfections with a wood filler or putty and sand smooth. Caulk should be applied after priming.

**Wood—Interior – S-W 24:** All finishing lumber and flooring must be stored in dry, warm rooms to prevent absorption of moisture, shrinkage, and roughening of the wood. All surfaces must be sanded smooth, with the grain, never across it. Surface blemishes must be corrected and the area cleaned of dust before coating.

**Vinyl Siding, Architectural Plastics, PVC & Fiberglass: – S-W 24:** Clean the surface thoroughly by scrubbing with warm, soapy water. Rinse thoroughly, prime with appropriate white primer. Do not paint vinyl with any color darker than the original color. Do not paint vinyl with a color having a Light Reflective Value (LRV) of less than 56 unless VinylSafe® Colors are used. If VinylSafe® Colors are not used and darker colors lower than an LRV of 56 are, the vinyl may warp. Follow all painting guidelines of the vinyl manufacturer when painting. Only paint properly installed vinyl siding. Deviating from the manufacturer's painting guidelines may cause the warranty to be voided.

**Previously Coated Surfaces – S-W 12:** Maintenance painting will frequently not permit or require complete removal of all old coatings prior to repainting. However, all surface contamination such as oil, grease, loose paint, mill scale dirt, foreign matter, rust, mold, mildew, mortar, efflorescence, and sealers must be removed to assure sound bonding to the tightly adhering old paint. Glossy surfaces of old paint films must be clean and dull before repainting. Thorough washing with an abrasive cleanser will clean and dull in one operation, or, wash thoroughly and dull by sanding. Spot prime any bare areas with an appropriate primer. Recognize that any surface preparation short of total removal of the old coating may compromise the service length of the system. Check for compatibility by applying a test patch of the recommended coating system, covering at least 2 to 3 square feet. Allow to dry one week before testing adhesion per ASTM D3359. If the coating system is incompatible, complete removal is required per ASTM D4259.

#### **Touch-Up, Maintenance and Repair**

For a protective coating system to provide maximum long-term protection, regularly scheduled maintenance is required. Maintenance includes inspection of painted areas, cleaning of surfaces to remove oils, chemicals, and other contaminants, and touch-up of areas where the coatings have been damaged. Highly corrosive areas, such as those subjected to frequent chemical spillage, corrosive fumes, and/or high abrasion or temperature areas should be inspected frequently – every six months, for example. Areas exposed to less severe conditions, such as interiors and exteriors of potable water tanks, may be inspected annually to assess the condition of the coating system.

The SSPC-VIS 2, Standard Method for Evaluating Degree of Rusting on Painted Steel Surfaces, can be used as a guide to determine appropriate touch-up and repairs maintenance schedules. Touch-up would be suggested when the surface resembles Rust Grade 5-S (Spot Rusting), 6-G (General Rusting), or 6-P (Pinpoint Rusting). Surface preparation would generally consist of SSPC-SP2, SP3, SP11, or SP12. Overcoating a well protected, but aged steel surface showing no evidence of rusting, may be achieved by Low Pressure Water Cleaning per SSPC-SP12/WJ4, and applying an appropriate coating system.

Full removal of the existing coating system by abrasive blasting would be recommended when the surface resembles Rust Grade 3-S (Spot Rusting), 4-G (General Rusting), or 4-P (Pinpoint Rusting). When the coating system has deteriorated to encompass approximately 33% of the surface area, it is always more economical to consider full removal and reapplication of the appropriate protective coating system.

**Mildew** –Prior to attempting to remove mildew, it is always recommended to test any cleaner on a small, inconspicuous area prior to use. Bleach and bleaching type cleaners may damage or discolor existing paint films. Bleach alternative cleaning solutions may be advised.

Mildew may be removed before painting by washing with a solution of 1 part liquid bleach and 3 parts water. Apply the solution and scrub the mildewed area. Allow the solution to remain on the surface for 10 minutes. Rinse thoroughly with water and allow the surface to dry before painting. Wear protective eyewear, waterproof gloves, and protective clothing. Quickly wash off any of the mixture that comes in contact with your skin. Do not add detergents or ammonia to the bleach/water solution.



**SHERWIN-WILLIAMS®**

# Reference Pages

# Data Pages

# Loxon® XP

## Waterproofing Masonry Coating-Flat

LX11-50 Series


**SHERWIN  
WILLIAMS®**

### CHARACTERISTICS

**Loxon XP** is an exterior, high build coating that provides excellent flexibility, durability and weather resistance. This product will protect against wind-driven rain when used on concrete, CMU, stucco and shotcrete-gunite. It is highly alkali and efflorescence resistant. This may be applied to a surface with a pH of 6 to 13.

Apply directly to fresh concrete (at least 7 days old) Shotcrete/gunite surfaces may be painted after 3 days

Can be applied over high pH (up to 13) substrates, no primer required

Can be applied down to 35°F

**Color:** Most Colors

**1 coat system, brush, roller, or spray applied, coverage per coat:**

Wet mils:	14.5-18.5
Dry mils:	6.5-8.4
Coverage sq.ft. per gallon	85-110

Can be applied up to 40 mils wet.

Coverage will vary with the substrate and the texture. Coverage on porous & rough stucco 80 square feet per gallon

**Drying Schedule @ 50% RH: temperature and humidity dependent**

	<b>@35-45°F</b>	<b>@ 45°F+</b>
<b>Touch:</b>	6 hrs	4 hrs
<b>Recoat:</b>	24-48 hrs	24 hrs

Drying time is temperature, humidity, and film thickness dependent.

**Finish:** 0-10 units @ 85°

**Tinting with CCE only:**

Base	oz.per gallon	Strength
Extra White	0-6	SherColor
Deep Base	4-12	SherColor
Ultradeep	10-12	SherColor
Light Yellow	0-12	SherColor

**Extra White LX11W0051**  
(may vary by color)

**V.O.C. (less exempt solvents):**

less than 50 grams per litre;0.42 lbs. per gallon  
As per 40 CFR 59.406

<b>Volume Solids:</b>	45 ± 2%
<b>Weight Solids:</b>	61 ± 2%
<b>Weight per Gallon:</b>	11.47 lb
<b>Flash Point:</b>	NA
<b>Vehicle Type:</b>	Proprietary Acrylic
<b>Shelf Life:</b>	36 months,unopened

**Mildew Resistant:**

This coating contains agents which inhibit the growth of mildew on the surface of this coating film. Passes ASTM D3273/D3274

### COMPLIANCE

As of 05/14/2019, Complies with:

<b>OTC</b>	Yes
<b>OTC Phase II</b>	Yes
<b>SCAQMD</b>	Yes
<b>CARB</b>	Yes
<b>CARB SCM 2007</b>	Yes
<b>Canada</b>	Yes
<b>LEED® v4 &amp; v4.1 Emissions</b>	N/A
<b>LEED® v4 &amp; v4.1 V.O.C.</b>	Yes
<b>EPD-NSF® Certified</b>	N/A
<b>MIR-Manufacturer Inventory</b>	N/A
<b>MPI®</b>	Yes

### APPLICATION

**Temperature:**  
minimum 35°F

The following is a guide. Changes in pressures and tip sizes may be needed for proper spray characteristics. Always purge spray equipment before use with listed reducer. Any reduction must be compatible with the existing environmental and application conditions.

**Reducer:** Do not reduce

**Airless Spray:**

Pressure	2300 p.s.i.
Tip	.021 inch
Brush	Use a nylon/polyester brush
Roller Cover	Use a ½ to 1½ inch nap synthetic roller cover.

The substrate and its condition will determine the application procedure. Considerations to minimize pinholes:

- 2 coat application with overnight drying between coats
- Spray application with backrolling
- Power rolling

Spray and backroll on porous & rough stucco to achieve required film build and a pin-hole free surface.

When the air temperature is at 35°F, substrates may be colder; prior to painting, check to be sure the air, surface, and material temperature are above 35°F and at least 5°F above the dew point. Avoid using if rain or snow is expected within 2-3 hours.

Do not apply at air or surface temperatures below 35°F or when air or surface temperatures may drop below 35°F within 48 hours.

Do not reduce.

### APPLICATION TIPS

For proper waterproofing performance and to resist alkalis, 2 coats of the coating **MUST** be applied between 14.5 -18.5 mils wet per coat.

A total dry film thickness of 13 - 16.8 mils of topcoat and a surface with 10 or less pinholes per square foot is required for a waterproofing system.

For extremely porous block a coat of Loxon Block Surfacer may be required to achieve a pinhole free surface.

For rehabilitating existing concrete water tanks, additional products may be used.

### RECOMMENDED SYSTEMS

**Concrete, Stucco, Concrete Block, CMU, Split-face Block, and other Cementitious surfaces**

1 coat Loxon Acrylic Block Surfacer  
(if needed) or  
Loxon Conditioner (if needed)

1-2 coats Loxon XP

**Previously Coated in good condition:**

After power washing, apply 1 coat of Loxon XP over the surface.

**Incidental Wood:**

1 coat Exterior Latex Wood Primer  
1-2 coats Loxon XP

**Incidental Metal:**

(steel, galvanized, or aluminum):

1 coat Pro Industrial Pro-Cryl Primer  
1-2 coats Loxon XP

**Waterproofing System:**

- Two coats of topcoat
- 6.5 to 8.4 mils dft per coat
- 13 to 16.8 mils total dry film thickness
- 10 or less pinholes per square foot

# Loxon® XP

## Waterproofing Masonry Coating-Flat

### SURFACE PREPARATION

**WARNING!** Removal of old paint by sanding, scraping or other means may generate dust or fumes that contain lead. Exposure to lead dust or fumes may cause brain damage or other adverse health effects, especially in children or pregnant women. Controlling exposure to lead or other hazardous substances requires the use of proper protective equipment, such as a properly fitted respirator (NIOSH approved) and proper containment and cleanup. For more information, call the National Lead Information Center at **1-800-424-LEAD** (in US) or contact your local health authority.

Remove all surface contamination by washing with an appropriate cleaner, rinse thoroughly and allow to dry. Scrape and sand peeled or checked paint to a sound surface. Sand glossy surfaces dull. Seal stains from water, smoke, ink, pencil, grease, etc. with the appropriate primer-sealer. Recognize that any surface preparation short of total removal of the old coating may compromise the service length of the system.

#### **Concrete, CMU, Stucco:**

On tilt-up and poured-in-place concrete, commercial detergents and sandblasting may be necessary to remove sealers, release compounds, and to provide an anchor pattern. Concrete and mortar must be cured at least 7 days at 75°F. Fill bugholes, air pockets, cracks, and other voids with an elastomeric patch or sealant. Rough surfaces can be filled to provide a smooth surface.

#### **Incidental Metal:**

Wash to remove any oil, grease, or other surface contamination. All corrosion must be removed with sandpaper, wire brush, or other abrading method. Primer required.

#### **Incidental Wood:**

Sand any exposed wood to a fresh surface. Patch all holes and imperfections with a wood filler or putty and sand smooth. All patched areas must be primed. Primer required.

Sealing and Patching—After cleaning the surface thoroughly, prime the concrete surface with Loxon XP, apply an elastomeric patch or sealant if needed, allow to dry, then topcoat.

To improve the performance consider:

- Use caution when preparing the substrate to create a uniform surface.
- Cracks, crevices, and through-wall openings must be patched with an elastomeric patch or sealant.
- Fill voids and openings around window and doors with an elastomeric patch or sealant.
- Stripe coat all inside and outside corners and edges with 1 coat of Loxon XP coating.

### SURFACE PREPARATION

#### **Mildew:**

Prior to attempting to remove mildew, it is always recommended to test any cleaner on a small, inconspicuous area prior to use. Bleach and bleaching type cleaners may damage or discolor existing paint films. Bleach alternative cleaning solutions may be advised.

Mildew may be removed before painting by washing with a solution of 1 part liquid bleach and 3 parts water. Apply the solution and scrub the mildewed area. Allow the solution to remain on the surface for 10 minutes. Rinse thoroughly with water and allow the surface to dry before painting. Wear protective eyewear, waterproof gloves, and protective clothing. Quickly wash off any of the mixture that comes in contact with your skin. Do not add detergents or ammonia to the bleach-water solution.

### PHYSICAL PROPERTIES

Do not paint on wet surfaces.

#### **LX11W0051**

**Wind-Driven Rain Test :** Pass

Method: ASTM D6904-03

2 coats Loxon XP @ 6.4-8.3 mils dft/ct

**Water Vapor Permeance :** 17.96 perms

Method: ASTM D1653 14 day cure @ 77°F & 50% RH

2 coats Loxon XP @ 6.5 mils dft/ct

**Elongation :** 275%

Method: ASTM D2370, 14 day cure @ 77°F & 50% RH

1 coat Loxon XP @ 9.4 mils dft

**Tensile Strength :** 285 psi

Method: ASTM D2370, 14 day cure @ 77°F & 50% RH

1 coat Loxon XP @ 9.4 mils dft

#### **Flexibility:**

Method: ASTM D522

Result: Pass

#### **Alkali Resistance:**

Method: ASTM D1308

Result: Pass

#### **Chloride Ion Permeability:**

Result: 243 coulombs

Result: "Very Low" Permeability Class

#### **CO<sub>2</sub> Diffusion (anti-carbonation):**

Method: ASTM F2476

Result: 344 meters

equivalent air thickness >50 meters to pass

8.0 g/m<sup>2</sup>/24 hrs

#### **Crack Bridging: Class A5**

Method: EN 1062-7 Method A

Result: up to 2.5 mm @ -10°C

#### **Efflorescence:**

Method: ASTM D7072-04

Result: None

### CAUTIONS

For exterior use only.

Protect from freezing.

Non-photochemically reactive.

Not for use on horizontal surfaces (floors, roofs, decks, etc.) where water will collect.

Not for use below grade. Will not withstand hydrostatic pressure.

Before using, carefully read **CAUTIONS** on label.

**ZINC.** Use only with adequate ventilation. To avoid overexposure, open windows and doors or use other means to ensure fresh air entry during application and drying. If you experience eye watering, headaches, or dizziness, increase fresh air, or wear respiratory protection (NIOSH approved) or leave the area. Avoid contact with eyes and skin. Wash hands after using. Keep container closed when not in use. Do not transfer contents to other containers for storage. **FIRST AID:** In case of eye contact, flush thoroughly with large amounts of water. Get medical attention if irritation persists. If swallowed, call Poison Control Center, hospital emergency room, or physician immediately.

**WARNING:** This product contains chemicals known to the State of California to cause cancer and birth defects or other reproductive harm. **DO NOT TAKE INTERNALLY. KEEP OUT OF THE REACH OF CHILDREN.**

HOTW 05/14/2020  
FRC, SP

LX11W0051 23 00

### CLEANUP INFORMATION

Clean spills, splatters, hands and tools immediately after use with soap and warm water. After cleaning, flush spray equipment with a compliant cleanup solvent to prevent rusting of the equipment. Follow manufacturer's safety recommendations when using solvents.



THIS COLOR IS NOT ONE THAT SHERWIN WILLIAMS SUGGESTED, IT IS REYARD AND WE FEEL IT IS A BETTER MATCH FOR THIS BUILDING.





March 12, 2021

Pioneer Square Preservation Board

PO Box 94649

Seattle WA, 98124-4649

Correction notice Response.

Project address 311 1<sup>st</sup> Avenue South Seattle Washington 98104

**Item 1**

During additional research we have determined that Diamond Parking does not own the wall, we have included the Certificate of Approval with a Maud Owner name.

**Item 2**

We understand that this is a last resort. Due to the condition of the brick a clear coating is not feasible and only painting will cover the graffiti. We requested another specialist from Sherwin Williams to assess the wall and suggest a clear product to protect the wall once the brick was cleaned. (see attached). The brick is to damage to receive any clear anti-graffiti coating at this time without substantial destructive repairs which would require removing the face brick and turning them around. At this point we are left with painting as the best option to preserve the existing brick.

I have also included the letter provided by Graffiti Busters on how they have been cleaning the brick in the past as you requested.

No other options have been suggested by any of our consultants.

Sincerely,

A handwritten signature in black ink that reads "Gregg Percich". The signature is written in a cursive, slightly slanted style.

Gregg Percich