

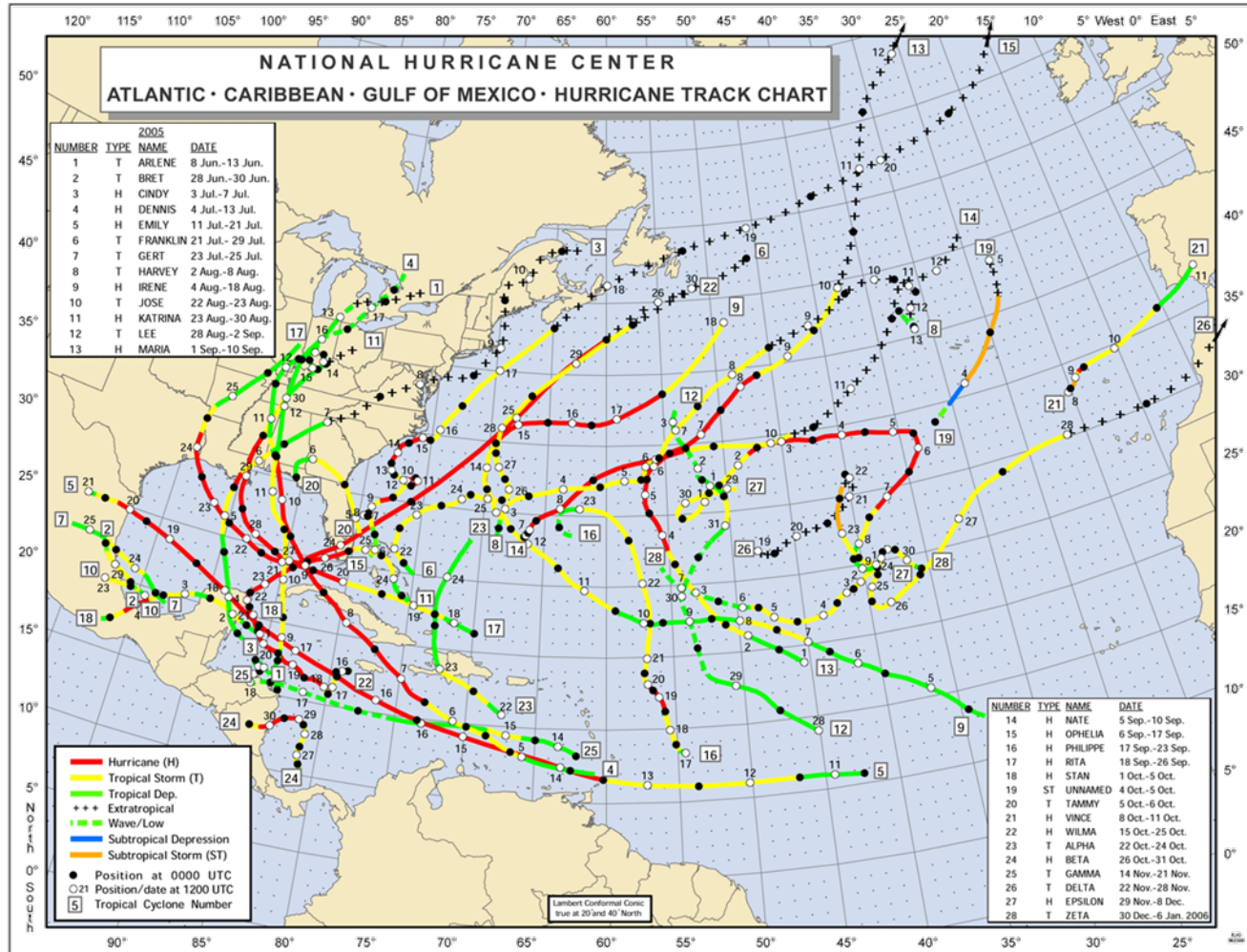
# **New Orleans and Louisiana: A History of Response and Recovery**

Heather M. Hilliard, CEM

IBRD Workshop, Seattle  
September 21 – 23, 2010

# Storms in the Gulf

2005 = 13    2006 = 0    2007 = 5    2008 = 10    2009 = 2    2010 = ~3

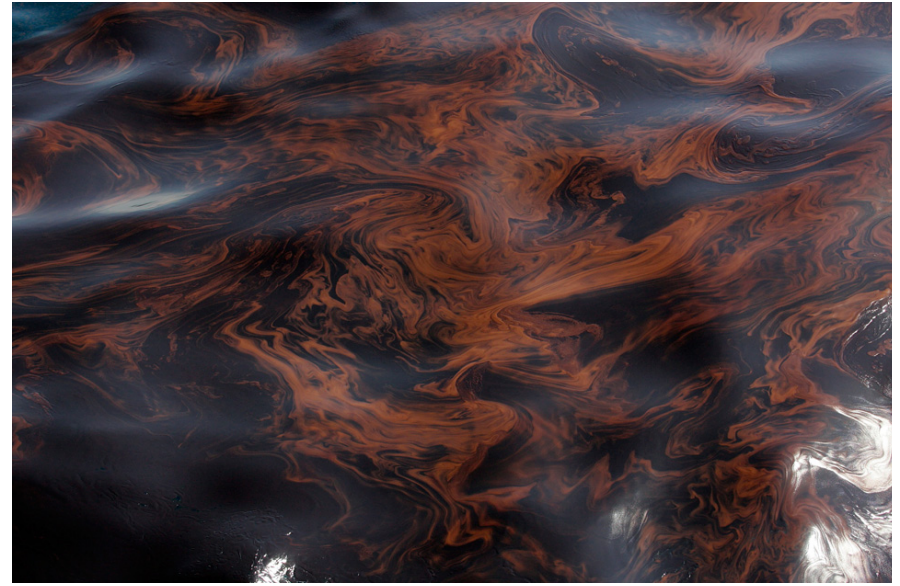


# HazMat - Mississippi Canyon 252

April 20, 2010 through September 19, 2010\*



AP Photo, Gerald Herbert



AP Photo, Patrick Semansky

*As of July 21, 2010 – the response was the largest fleet assembled since the invasion of Normandy in June 1944 (5,600 vessels; rose to 6,740+)*  
*As of September 21, 2010 – BP declared “no deductions” for clean-up work*

# And Always Some Lagniappe

[http://blog.nola.com/tpmoney/2008/07/oil\\_spill\\_closes\\_traffic\\_on\\_mi.html](http://blog.nola.com/tpmoney/2008/07/oil_spill_closes_traffic_on_mi.html)

[http://www.nola.com/news/index.ssf/2008/12/the\\_new\\_orleans\\_area\\_is.html](http://www.nola.com/news/index.ssf/2008/12/the_new_orleans_area_is.html)

<http://www.wbrz.com/news/earthquake-shakes-several-homes-in-clinton/>  
<http://www.2theadvocate.com/news/99814594.html>

*Mississippi River Oil Spill, July 2008 – federal guilty pleas, Sept 2010*

*French Quarter Snow, December 2008*

*Baton Rouge Area Earthquake, August 2010*

# Louisiana Top Hazard Priorities

Table 4-9: Hazard Priorities

Ranking	Hazard
1	Storm Surge
2	High Wind – Hurricane / Tropical Storm
3	Flood
4	High Wind – Tornado
5	Levee Failure
6	Subsidence
7	Hazardous Material Incident
8	Ice Storm
9	Wildfire
10	Dam Failure

# Response Top Concerns

**Surge**

**Shelter**

**Sanitation**



# Ask For Help



# Recovery Top Concerns

**Resilience**

**Reconnaissance**

**Remembering**



# You Can Plan, But:

## Every Event Is Different...

## And Memories Last a Lifetime

- Utilize Lessons Learned but don't be restricted = creative
- Need to enforce 'down time' and this includes the IC
- You may not be done with the last event response and/or recovery (Mississippi River Oil Spill and Hurricane Gustav)
- The *plan* never survives the first contact in tact

To be continued!



**Louisiana Emergency Website**

**<http://emergency.la.gov/>**

**Department of Health and Hospitals**

**<http://www.dhh.louisiana.gov/>**

**State Preparedness Guides**

**<http://www.getagameplan.org>**