

Madison Valley Stormwater Project

Summer 2010 Update

Phase 2 construction is beginning

Seattle Public Utilities (SPU) has selected IMCO General Construction to construct Phase 2 of the Madison Valley Stormwater Project. Work will include installation of a new 48-inch diameter stormwater pipeline between E John Street and Washington Park and construction of an approximately 2.2 million gallon stormwater storage facility in the southwest corner of Washington Park (see map). Site preparation activities began in early July and active construction will begin in August. Construction is expected to last 15 to 18 months. See insert for more information about Phase 2 construction (*continued on page 2*).

Project Area



What's Inside?

Turn the page for more info about:

- Completion of Phase 1
- Phase 2 construction
- Preliminary Phase 2 project schedule
- Staying informed during construction
- Project benefits

Join us for a community event to celebrate the completion of Phase 1 and the start of Phase 2 construction

The Greater Madison Valley Community Council is holding a neighborhood gathering at the Phase 1 site at 30th Avenue E and E John Street. SPU will be available at this event to provide information about the Madison Valley Stormwater Project.

Stop by the SPU tent to learn more about completion of Phase 1 and upcoming activities for Phase 2.

Where

30th Avenue E and E John Street
Phase 1 above-ground stormwater storage facility

(Look for SPU at the white tent)

When

Saturday, July 31, 2010
11:00 a.m. to 1:00 p.m.



Seattle
Public
Utilities

Phase 2 construction

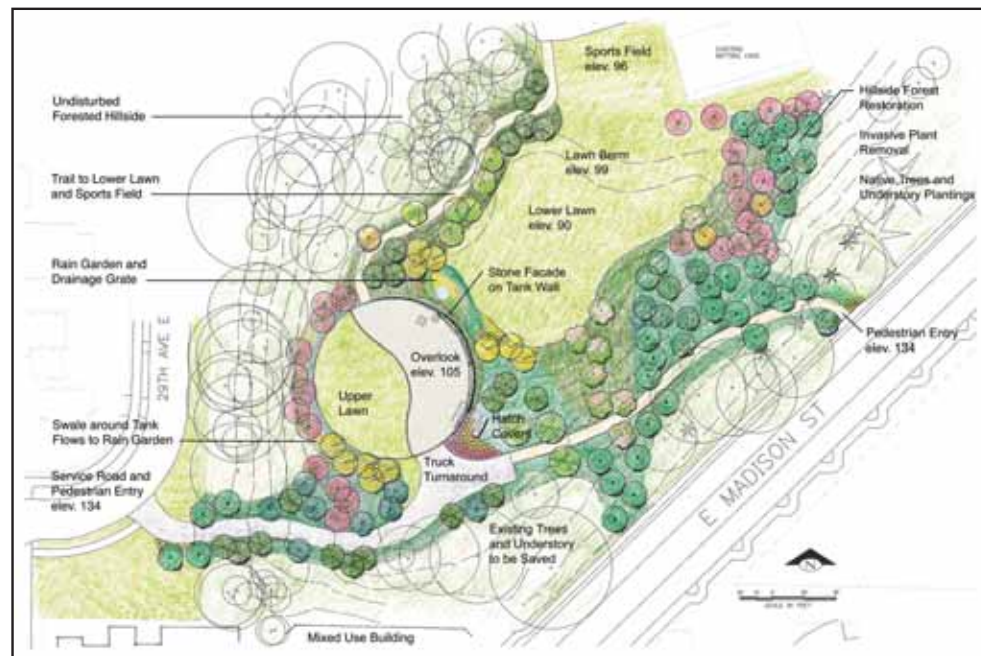
(continued from page 1)

Typical construction hours are Monday – Friday, 7:30 a.m. to 6:00 p.m. Limited evening and Saturday work between 9:00 a.m. and 5:00 p.m. may be permitted. Throughout the project, SPU will make every effort to provide the community with advance notice of construction activities, including potential weekend or night work. The timeline below is the Phase 2 construction schedule as of June 2010 (see insert for general construction sequencing plans and potential impacts).

Benefits of the Madison Valley Stormwater Project

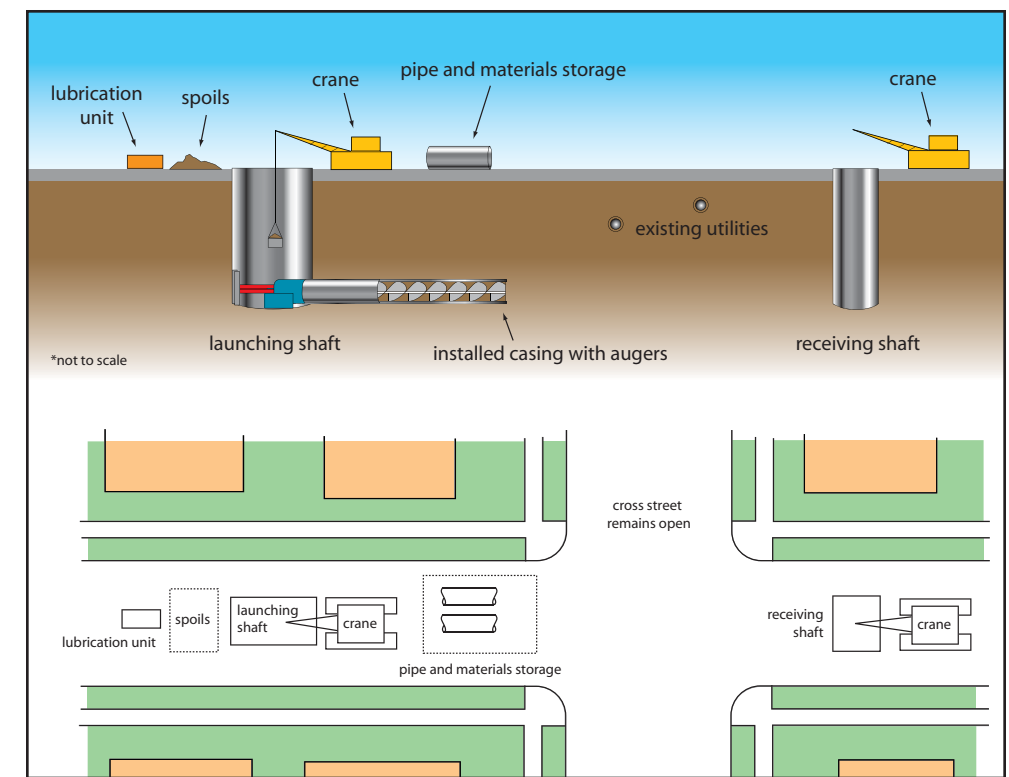
The Madison Valley Stormwater Project will greatly decrease the potential for sewer backups and stormwater flooding, specifically in the vicinities of 30th Avenue E and E John Street, and 29th Avenue E and E Madison Street. The project is made up of two phases. Phase 1, completed in winter 2009, included the expansion of an above-ground stormwater holding area at 30th Avenue E and E John Street. Phase 2 includes the design and construction of a new 48-inch diameter stormwater pipeline between E John Street and Washington Park, and an approximately 2.2 million gallon stormwater storage facility in the southwest corner of Washington Park. The project also includes new amenities and landscaping in the southwest corner of Washington Park including new pedestrian trails, an overlook, raingardens, and artwork (see landscape plan below). Phase 2 design was completed in February 2010. Construction began in July and should be complete in early 2012.

Landscape plan at stormwater storage facility in Washington Park



Trenchless construction 101

SPU will use trenchless construction to install the stormwater pipeline. This type of construction has reduced impacts compared to traditional pipeline installation because much of the work happens below ground (see graphic). The above-ground activity primarily occurs at localized areas along the alignment called tunneling shafts. During pipeline construction, workers, machines, and equipment will enter and exit the tunnels at the shafts. On the surface street, impacts to traffic and pedestrians can be reduced. Each shaft will be fenced to store equipment and materials, and to maintain a safe work zone.



Example shaft work and staging area

Phase 1 is complete and fully operational

The above-ground stormwater storage area at 30th Avenue E and E John Street is now complete. This new area will hold up to 1.7 million gallons of stormwater and provides open space for the community when not being used to hold stormwater. This site is designed to hold stormwater during very large rain storms for a short period of time until the water can drain into the combined sewer system.

Phase 1 above-ground stormwater storage facility



Your safety is our #1 concern.

During construction, emergency vehicles will always have access to your property.

Please help us keep a safe construction area!

- Drive slowly in construction areas.
- Keep yourself and children a safe distance from the construction shafts and equipment.
- Abide street closure and road detour signs.

Phase 2 construction schedule as of June 2010. This schedule is approximate and subject to contractor revision.

	Summer 2010	Fall 2010	Winter 2011	Spring 2011	Summer 2011	Fall 2011	Winter 2012
Stormwater Storage	Stormwater storage facility in Washington Park						
Site prep and excavate	Site prep and excavate						
Construct tank		Construct tank					
Grading and restoration				Grading and restoration			
Landscaping						Landscaping	
Stormwater Pipeline	Stormwater pipeline						
E Madison Street Stormwater Improvements					E Madison St Stormwater Improvements		
Street restoration work					Pavement restoration	Construction area re-opened to the public	

We want to keep you informed!

Have a question or concern during construction? Contact us!

- 24-hour construction hotline: (206) 455-5345
- Email: info@madisonvalleystormwater.com

Learn more about the project:

www.seattle.gov/util/MadisonValley

Join our mailing list to receive regular updates: info@madisonvalleystormwater.com or (206) 455-5345.

Madison Valley Stormwater Project

Summer 2010 Update

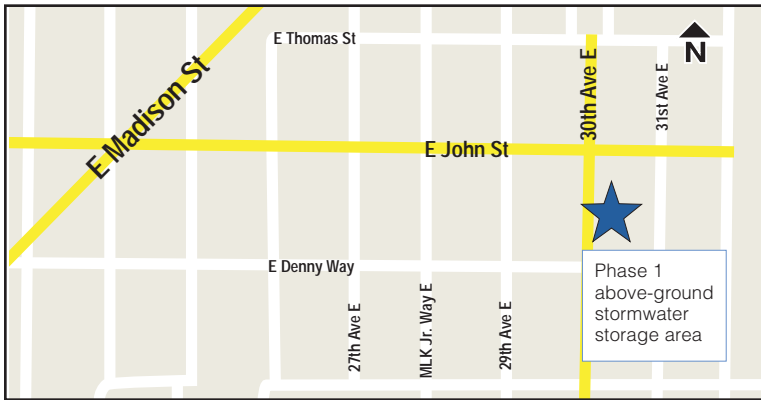


Mark Your Calendar

Join us at a community event to recognize the completion of Phase 1 and the start of Phase 2 construction!

Where: Phase 1 site (30th Avenue E and E John Street)

When: Saturday, July 31, 2010
11:00 a.m. to 1:00 p.m.



What's Inside?

- Completion of Phase 1
- Phase 2 construction
- Preliminary Phase 2 project schedule
- Staying informed during construction
- Project benefits

For more information

To find out more about the Madison Valley Stormwater Project, contact:

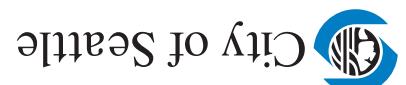
• **24-hour construction hotline:**
(206) 455-5345

• **Email:**
info@madisonvalleystormwater.com

Learn more about the project:
www.seattle.gov/util/MadisonValley

PRSR STD
US POSTAGE
PAID
SEATTLE, WA
PERMIT NO 6000

Seattle Public Utilities
700 5th Avenue Suite 4900
PO Box 34018
Seattle WA 98124-4018



Phase 2 construction at a glance

Preliminary construction activities for Phase 2 are underway and active construction will begin in August. Typical construction hours are Monday – Friday, 7:30 a.m. to 6:00 p.m. Limited evening and Saturday work between 9:00 a.m. and 5:00 p.m. may be permitted. Throughout the project, SPU will make every effort to provide the community with advance notice of construction activities, including potential weekend or night work.

General construction sequence

The following construction sequence is anticipated, weather permitting:

1 Preliminary construction activities

- Some activities have already begun and others will begin soon:
 - Installation of temporary safety fencing around the construction/staging area in Washington Park.
 - Vibration testing along the stormwater pipeline alignment and in Washington Park, and pavement marking along the stormwater pipeline alignment.
 - Tagging and removal of designated trees along the perimeter slope of Washington Park.
 - Construction of two temporary, equipment access roads into Washington Park; one at E Madison Street, and one at 29th Avenue E and E Roy Street. When construction is complete, the access road at 29th Avenue E and E Roy Street will become a maintenance vehicle roadway and the access road at E Madison Street will become a pedestrian pathway.
 - Mobilization of equipment and materials.

2 Stormwater storage and pipeline construction

- **Stormwater Storage:** Crews will begin construction of the stormwater storage tank in Washington Park. Dump trucks and construction vehicles will need to enter and exit the tank site during construction. A flagger will be onsite to monitor traffic on E Madison Street. Throughout construction, the ball fields and batting cages in Washington Park will remain open.
- **Stormwater Pipeline:** The contractor will begin construction of the tunneling shafts at the designated locations along the pipeline alignment. The contractor will work at no more than three shaft locations at any one time. The work zones around tunneling shafts will vary in size. They must be large enough to accommodate

the tunneling shafts, large construction equipment, and space for crews to safely operate. These work zones will occur in the City right-of-way and will be surrounded by temporary safety fencing.

Once construction activity is completed at a shaft, the surface area will be temporarily covered with steel plates while crews work at other locations along the pipeline.

■ E Madison Street Stormwater Improvements:

Following installation of a new stormwater pipeline, crews will construct stormwater inlets at two locations on E Madison Street. A pipeline will be constructed along 29th Avenue E to connect the inlets to the new stormwater mainline. One lane of traffic will remain open in each direction on E Madison Street during this work.

3 Street restoration

- Once the entire pipeline has been installed and the system has been thoroughly tested, crews will restore right-of-way surface impacted by construction.

Potential temporary impacts during construction:

- Noise, dust and vibration, especially during excavation and shoring activities at the shaft and/or at the tank site in Washington Park.
- Temporary loss of some street parking. "No Parking" signs will be clearly posted and efforts will be made to minimize the amount of lost parking spots in the project area during construction.
- Increased truck and oversized vehicle traffic.
- During active construction, there will be temporary detour routes on various neighborhood streets.
- During active construction, some driveways may be blocked during work hours. Affected properties will be notified in advance.
- During active construction, some properties may experience temporary utility interruptions. SPU will notify affected properties 48-hours in advance of any planned water shut-off.

Have a question or concern during construction? Contact us!

24-hour construction hotline: (206) 455-5345

Email: info@madisonvalleystormwater.com

Learn more about the project:

www.seattle.gov/util/MadisonValley

