

# GARBAGE REPORT

3rd Quarter 2017

Seattle Public Utilities, Economic Services Section

Report Date: November 9, 2017

Phone: (206) 684-4143

## Total City Tonnage Breakdown

### **Self Haul<sup>1</sup>**

Q3 Self Haul Cars <sup>2</sup>	1,098 Tons	70.7%	increase vs. same period in 2016
2016 Cumulative Self Haul Cars:	2,763 Tons	58.0%	increase vs. same period in 2016
Q3 Self Haul Trucks <sup>3</sup> :	24,953 Tons	39.5%	increase vs. same period in 2016
2017 Cumulative Self Haul Trucks:	74,131 Tons	54.4%	increase vs. same period in 2016
2017 Cumulative Self Haul Cars & Trucks:	76,894 Tons	54.6%	increase vs. same period in 2016

### **Residential**

Q3 Single Family:	14,401 Tons	4.4%	increase vs. same period in 2016
2017 Cumulative Single Family:	42,231 Tons	4.3%	increase vs. same period in 2016
Q3 Multi Family:	12,214 Tons	3.5%	decrease vs. same period in 2016
2017 Cumulative Multi Family:	36,422 Tons	2.5%	decrease vs. same period in 2016
Q3 Total Residential:	26,616 Tons	0.6%	increase vs. same period in 2016
2017 Cumulative Total Residential:	78,653 Tons	1.1%	increase vs. same period in 2016

### **Commercial**

Q3 Commercial:	35,259 Tons	0.3%	increase vs. same period in 2016
2017 Cumulative Commercial:	104,295 Tons	0.7%	increase vs. same period in 2016

### **Total Tons Collected**

Q3 Total Collected:	87,926 Tons	9.7%	increase vs. same period in 2016
2017 Cumulative Total Collected:	259,842 Tons	12.4%	increase vs. same period in 2016

### **Total Tons Delivered To Arlington<sup>4</sup>**

Q3 Total Delivered:	91,176 Tons	17.8%	increase vs. same period in 2016
2017 Cumulative Total Delivered:	174,109 Tons	15.2%	increase vs. same period in 2016

## Selected Statistics

Average Monthly Pounds Garbage Collected per Household YTD

Single Family Customers: 57 lbs/hh (165,264 hhs)  
(4 or less dwelling units)

Multi Family Customers 46 lbs/hh (180,288 hhs)  
(5 or more dwelling units)

## Recycling & Disposal Station Self Haul Garbage Rates<sup>5</sup>

Cars: \$30.00 per trip

Trucks: \$145.00 per ton (\$30.00 minimum)

<sup>1</sup> The North Recycle & Disposal Station re-opened Nov 28, 2016 after a rebuild.

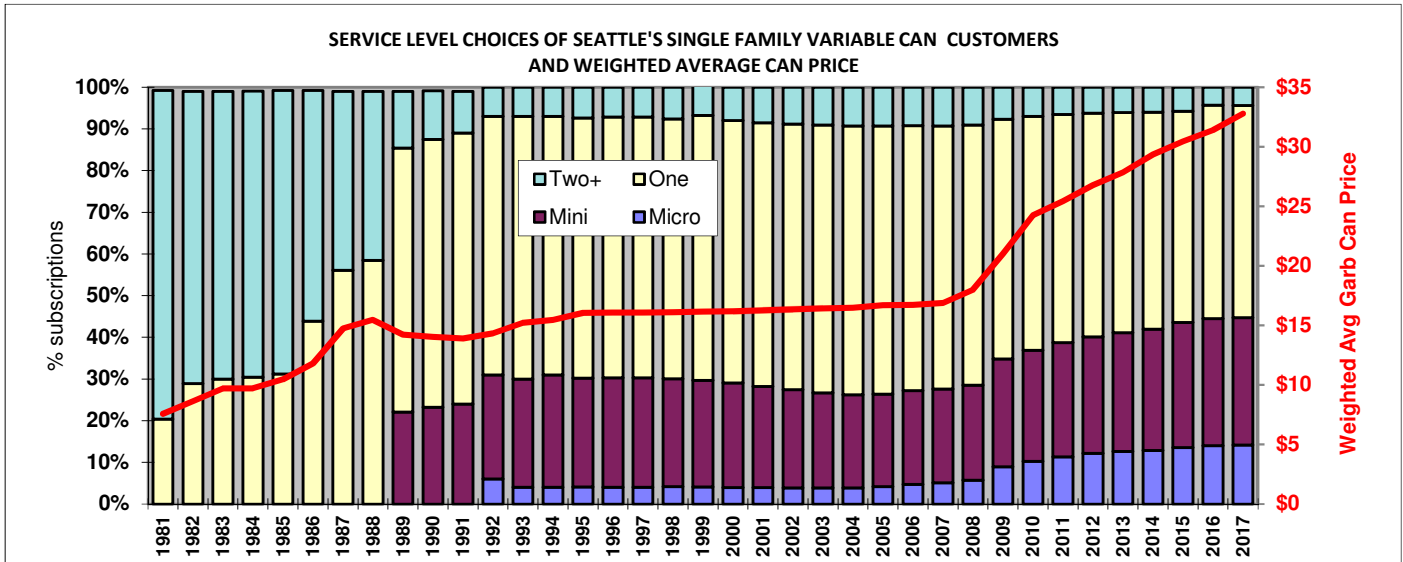
<sup>2</sup> Beginning Feb 2014 car trips are weighed. Prior to Feb 2014, car weights were calculated based on composition study results. Average weighed car trips were 280 pounds/car for Q1 2014 as compared to 480.8 pounds/car that were used from 2009 to present based on the 2008 waste composition study.

<sup>3</sup> An estimated 38% of the self-haul truck tons are commercial according to a waste stream sampling study conducted in 2012.

<sup>4</sup> Total tons collected not equal to total tons delivered due to operational factors.

<sup>5</sup> Vans & pickup trucks pay the per ton truck rate.

## Variable Can Service Level for Single Family Can Customers



	Micro	Mini	One	Two+	Weighted Avg Price
1981			20.40%	78.80%	\$7.57
1982			28.87%	70.13%	\$8.63
1985			31.20%	68.00%	\$10.47
1986			43.90%	55.30%	\$11.81
1987			56.10%	42.90%	\$14.74
1989		22.05%	63.36%	13.59%	\$14.22
1992	6.00%	25.00%	62.00%	7.00%	\$14.34
1993	4.00%	26.00%	63.00%	7.00%	\$15.23
1994	4.00%	27.00%	62.00%	7.00%	\$15.47
1995	4.06%	26.15%	62.44%	7.35%	\$16.06
1996	4.04%	26.23%	62.59%	7.14%	\$16.07
1998	4.16%	25.88%	62.35%	7.61%	\$16.10
1999	4.06%	25.60%	63.62%	7.72%	\$16.15
2000	3.93%	25.08%	63.02%	7.97%	\$16.19
2001	3.96%	24.24%	63.32%	8.49%	\$16.25
2002	3.85%	23.62%	63.72%	8.82%	\$16.35
2003	3.84%	22.85%	64.23%	9.08%	\$16.42
2004	3.86%	22.31%	64.54%	9.30%	\$16.48
2005	4.13%	22.22%	64.37%	9.28%	\$16.70
2006	4.72%	22.49%	63.57%	9.21%	\$16.73
2007	5.05%	22.50%	63.17%	9.28%	\$16.90
2008	5.66%	22.85%	62.45%	9.04%	\$17.98
2009	8.94%	25.89%	57.51%	7.67%	\$21.01
2010	10.21%	26.69%	56.08%	7.02%	\$24.25
2011	11.31%	27.45%	54.72%	6.53%	\$25.43
2012	12.13%	27.98%	53.68%	6.21%	\$26.76
2013	12.62%	28.49%	52.85%	6.04%	\$27.85
2014	12.80%	29.17%	52.01%	6.01%	\$29.34
2015	13.52%	30.02%	50.71%	5.75%	\$30.46
2016	13.99%	30.49%	51.22%	4.30%	\$31.39
2017	14.15%	30.58%	50.87%	4.40%	\$32.79

The weighted average method is used to estimate the average variable can price.

### Current Monthly Variable Can Rates

Micro (12 gal)	\$22.85
Mini (19 gal)	\$28.00
One Can (32 gal)	\$36.45
Two Cans (64 gal)	\$72.90
Three Cans (96 gal)	\$109.35
Extra Garbage	\$11.35

### Residential Dumpster Service

Most Common Monthly Rate\*  
\$230.14

\*This is the rate for a one cubic yard un-compacted container picked up once per week. Residential dumpster service rates vary based on the number and size of containers and the number of pickups per week.

**CITY OF SEATTLE GARBAGE TONNAGE REPORT**

		SELF HAUL			RESIDENTIAL							COMMERCIAL GARBAGE							GRAND						
		Self Haul <sup>23</sup>		Total	Recology/CleanScapes <sup>19</sup>		Waste Management		TOTALS					Recology/CleanScapes			Rabanco			Waste Management			TOTAL	TOTAL	
Year	Month	Cars <sup>2</sup>	Trucks	Self Haul	City Stations	Eastmont/ Lander <sup>20</sup>	City Stations	Eastmont	Single Family	SF <sup>24</sup> Lbs/HH	Multi Family	MF <sup>24</sup> Lbs/HH	Total Residential	City Stations	Eastmont	Recology <sup>22</sup>	City Stations	Lander <sup>21</sup>	Eastmont	City Stations	Lander	Eastmont	COMMERCIAL	GARBAGE	
2016	1	154	4,335	4,490	4,292	0	4,129	0	4,416	54	4,005	55	8,421	5,155	0	730		508		4,425		448	11,266	24,177	
2016	2	154	4,397	4,551	4,190	0	4,036	0	4,228	51	3,998	55	8,226	5,129	0	69		472		4,575		496	10,741	23,518	
2016	3	183	4,941	5,124	4,641	0	4,456	0	4,687	57	4,410	60	9,096	5,547	0	72		509		5,035		515	11,677	25,897	
2016	4	205	5,209	5,414	4,191	0	4,053	0	4,298	52	3,946	54	8,244	5,290	0	110		784		4,620		459	11,264	24,922	
2016	5	199	5,443	5,642	4,419	0	4,191	0	4,443	54	4,168	57	8,611	5,486	0	74		827		4,777		441	11,605	25,857	
2016	6	211	5,789	6,000	4,512	0	4,269	0	4,618	56	4,163	57	8,781	5,636	0	80		848		4,712		582	11,857	26,639	
2016	7	243	5,941	6,184	4,316	0	4,146	0	4,426	54	4,036	55	8,462	5,400	0	53		807		4,452		428	11,141	25,786	
2016	8	213	6,244	6,457	4,773	0	4,443	0	4,748	58	4,469	60	9,216	5,866	0	104		886		5,160		542	12,557	28,230	
2016	9	187	5,702	5,889	4,534	0	4,240	0	4,623	57	4,150	61	8,773	5,488	0	109		858		4,506		491	11,451	26,114	
2016	10	156	5,009	5,165	4,453	0	4,080	40	4,570	56	4,001	47	8,573	5,511	0	132		843		4,660		629	11,775	25,513	
2016	11	142	5,020	5,162	4,606	0	4,325	0	4,750	58	4,182	49	8,932	5,604	0	107		915		4,897		511	12,033	26,127	
2016	12	188	5,574	5,763	4,332	0	4,069	0	4,492	55	3,908	45	8,401	5,418	0	107		913		4,607		320	11,364	25,527	
2017	1	224	7,165	7,389	4,384	0	4,177	0	4,607	56	3,953	46	8,561	5,198	0	85		730		4,699		265	10,978	26,928	
2017	2	205	6,264	6,469	4,015	0	3,895	0	3,945	48	3,965	46	7,910	4,901	0	142		863		4,282		416	10,604	24,983	
2017	3	264	9,364	9,628	4,666	0	4,456	0	4,892	60	4,230	48	9,122	5,668	0	163		839		4,968		557	12,195	30,945	
2017	4	295	7,632	7,926	4,110	0	3,803	0	4,341	53	3,571	41	7,913	5,278	0	136		725		4,644		428	11,211	27,050	
2017	5	327	10,229	10,556	4,837	0	4,552	0	5,082	62	4,307	49	9,389	5,725	0	25		831		5,080		394	12,056	32,000	
2017	6	352	8,524	8,876	4,708	0	4,434	0	4,961	60	4,181	47	9,143	5,734	0	25		823		4,980		431	11,992	30,010	
2017	7	392	8,465	8,857	4,477	0	4,177	0	4,694	57	3,960	44	8,654	5,381	0	182		787		4,713		336	11,399	28,910	
2017	8	352	8,498	8,850	4,835	0	4,473	2	5,051	61	4,256	47	9,309	5,938	0	186		837		5,140		414	12,515	30,675	
2017	9	354	7,990	8,343	4,512	0	4,142	1	4,657	56	3,998	44	8,655	5,343	0	205		775		4,539		483	11,345	28,344	
<b>Total 2017</b>		<b>2,763</b>	<b>74,131</b>	<b>76,894</b>	<b>40,545</b>	<b>0</b>	<b>38,107</b>	<b>3</b>	<b>42,231</b>	<b>57</b>	<b>36,422</b>	<b>46</b>	<b>78,656</b>	<b>49,166</b>	<b>0</b>	<b>1,150</b>		<b>7,209</b>		<b>43,046</b>		<b>3,725</b>	<b>104,295</b>	<b>259,845</b>	
Total 2016		2,236	63,604	65,840	53,258	0	50,437	40	54,298	55	49,437	55	103,736	65,528	0	1,746		9,169		56,426		5,860	138,729	308,305	
Total 2015		2,190	58,748	60,938	52,231	21	49,713	8	52,529	53	49,443	57	101,972	66,831	38	5,870		5,884		55,394		5,539	139,557	302,467	
Total 2014		2,487	55,360	57,847	56,344	230	55,396	241	59,772	61	52,439	63	112,211	66,888	2,431	3,378		5,680		55,804		5,275	139,457	309,515	
Total 2013		6,569	67,450	74,018	52,050	3,667	50,889	4,233	60,302	62	50,537	63	110,838	35,955	31,556			5,623		33,975		25,233	132,343	317,199	
Total 2012		6,285	64,190	70,474	52,651	3,007	53,052	2,709	60,906	62	50,514	65	111,420	41,082	27,298			5,883		38,527		21,300	134,089	315,984	
Total 2011		6,206	64,827	71,033	54,180	2,320	54,935	1,339	62,779	64	49,993	65	112,773	41,090	26,773			5,519		39,170		22,984	135,536	319,342	
Total 2010		6,230	73,062	79,292	53,799	3,587	54,995	1,715	64,309	66	49,788	66	114,097	37,844	32,486			2,742		42,042		27,066	142,180	335,569	
Total 2009		6,354	75,210	81,565	57,760	4,730	52,243	3,992					118,725	31,939	24,020			13,703	4,206	9,278	40,627	51	27,574	151,398	351,688
Total 2008		5,750	85,144	90,894	72,125	7,324	47,111	660					127,219					63,903	15,523	38,414	31,292	0	27,658	176,791	394,904
Total 2007		6,755	100,343	107,098	73,433	9,827	49,918	248					133,426					55,453	77,257	693	32,858	18,262	14,495	199,018	439,542
Total 2006		7,711	95,717	103,428	72,436	10,551	49,718	969					133,674					59,890	76,187		33,239	27,451	4,437	201,205	438,308
Total 2005		7,487	93,011	100,499	78,520	4,390	51,638	9					134,557					59,107	81,223		36,561	24,297	4,658	205,846	440,902
Total 2004		7,723	92,043	99,766	77,887	8,398	53,125	3,118					142,527					32,492	114,374		20,547	14,329	34,370	216,112	458,405
Total 2003		7,386	93,845	101,232	83,943	3,596	54,147	1,845					143,532					28,843	113,688		999		69,717	213,247	458,010
Total 2002		7,353	95,537	102,891	86,806	406	55,145	554					142,910					31,135	112,409		8,237		65,413	217,195	462,996
Total 2001		6,818	95,487	102,305	87,793	539	56,216	9					144,557										82,472	228,405	475,268
Total 2000		6,323	95,560	101,883	77,300	869	67,309	368					145,845										136,695	228,417	476,145
Total 1999 <sup>13</sup>		6,989	97,378	104,367	46,595		101,123						147,718										85,952	225,348	477,433
Total 1998		16,883	81,136	98,019	43,621	2,230	100,083						145,934										80,217	213,646	457,598
Total 1997		15,750	81,396	97,146	47,290	16	100,632						147,938										79,053	208,670	453,754
Total 1996 <sup>12</sup>		13,777	70,091	83,868	47,784	962	95,543						144,289										71,448	194,969	423,127
Total 1995 <sup>9</sup>		13,279	71,208	84,487	48,626	572	100,926						150,124										75,581	196,702	431,313
Total 1994		13,064	74,291	87,354	46,922	2,043	101,123						150,089										75,144	194,767	432,210
Total 1993		8,665	76,853	85,518	47,269		96,859						144,127										73,915	200,591	430,236
Total 1992		8,178	80,742	88,920	45,475		96,679						142,154										68,742	194,338	425,412
Total 1991		7,947	68,576	76,523	44,228		96,494						140,722										74,389	222,257	439,502
Total 1990 <sup>3</sup>		7,253	73,939	81,192	44,249		96,278						140,528										78,461	236,125	457,845
Total 1989 <sup>4,5</sup>		6,919	58,720	65,639	45,338		97,884						143,222										75,513	196,542	405,403
Total 1988 <sup>6</sup>		11,810	75,557	87,367	96,405		83,564						179,968										72,680	198,174	465,509
Total 1987 <sup>7</sup>		13,622	88,147	101,769	99,159		89,685						188,844										55,212	225,915	516,528
Total 1986		25,278	105,442	130,720	100,190		90,396						190,586										50,947	202,136	523,442

1 The two city owned recycling and disposal stations are NRDS in the north end of the city and SRDS in the South end.

2 Beginning Feb 2014 car trips are weighed. Prior to this, car weights were calculated based on composition study results.

Car weight estimate for 2009 - Jan 2014 based on 480.8 pounds per car

Car weight estimate for 2001/2008 based on 378.8 pounds per car.

Car weight estimate for 1999/2000 based on 333 pounds per car

Car weight estimate for 1998 based on 433 pounds per car.

Car weight estimate for 1994/95 based on 290 pounds per car.

3 Wood Waste Program at city owned transfer stations began in Jan, 1990, ended as separate program 2009

4 Apartment Recycling Program began in May, 1989

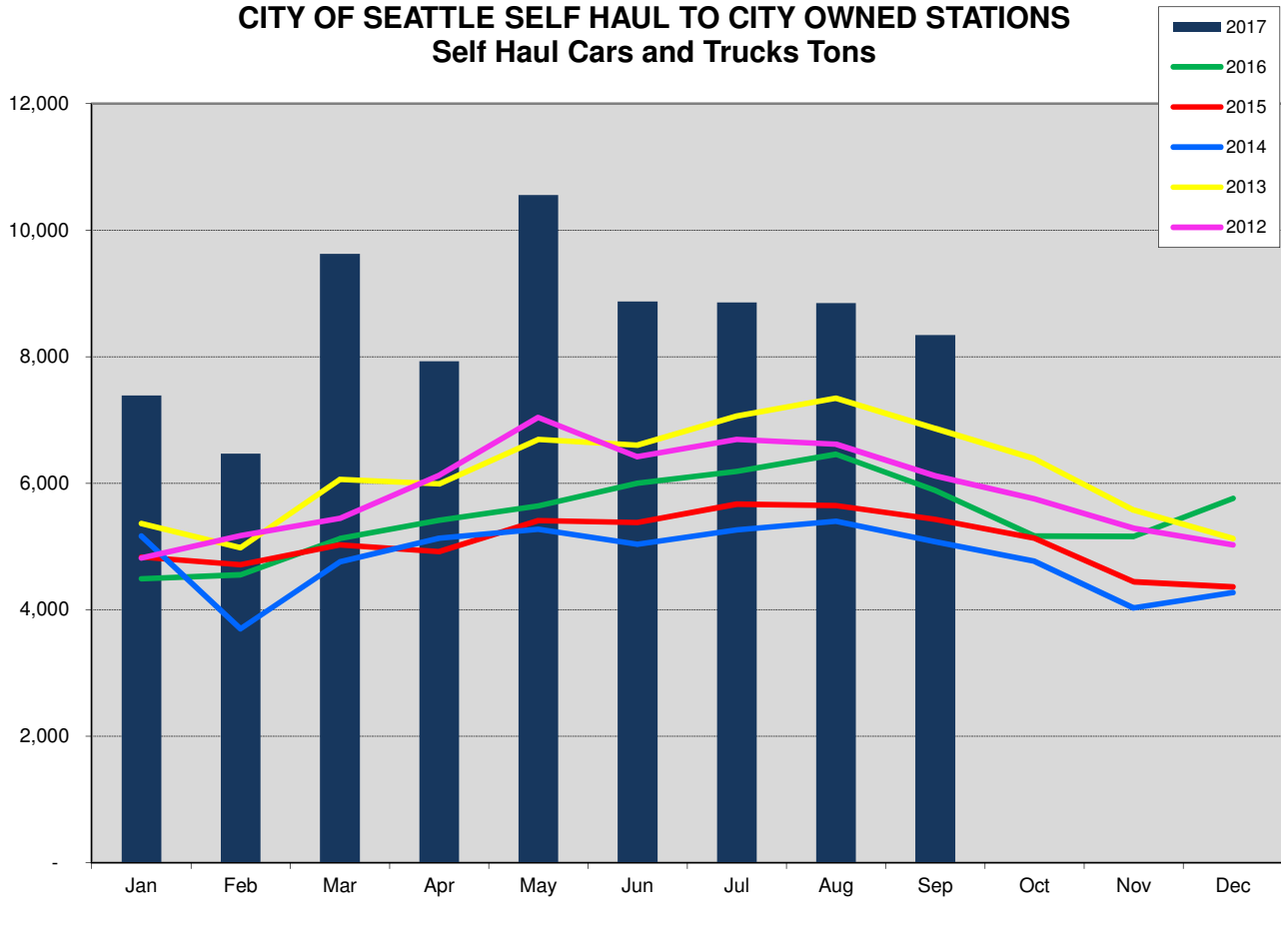
5 Curbside Yard Waste Collection began in January, 1989

6 Curbside Recycling Program began in February, 1988

7 Yard Waste "Clean Green" Program began in August, 1987

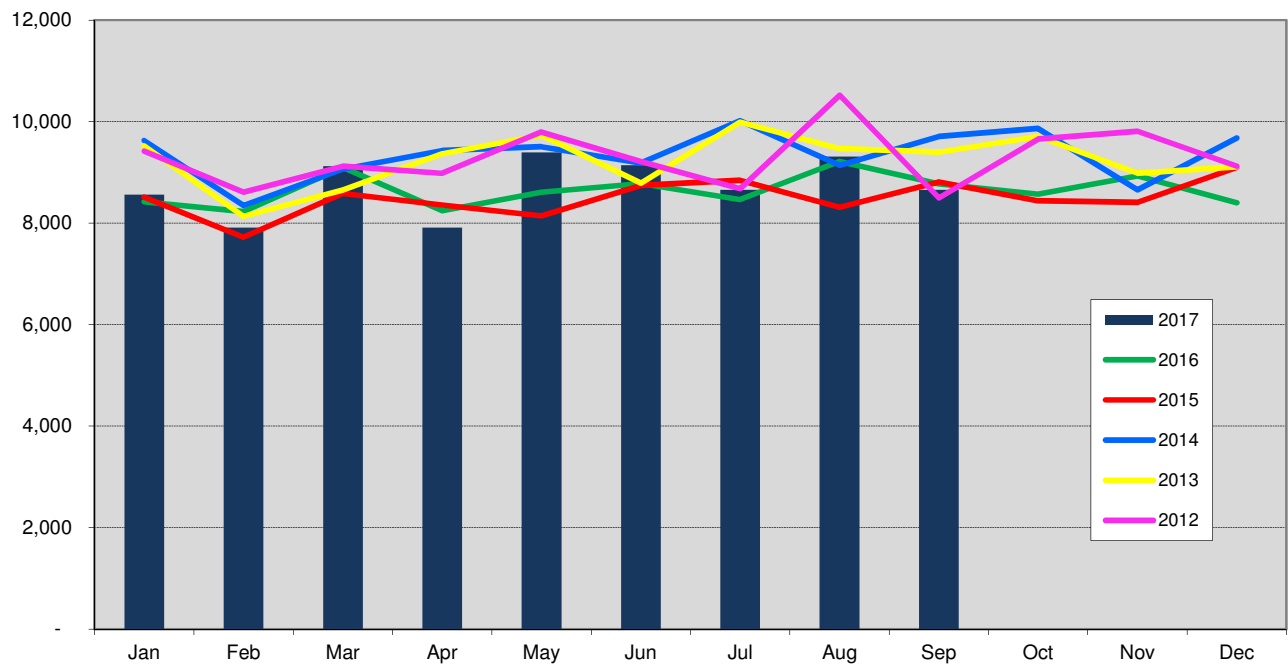
8 In 1995 3,220 tons of yard waste residuals were returned to SRDS and not weighed in. Added to self haul truck tons.

### CITY OF SEATTLE SELF HAUL TO CITY OWNED STATIONS Self Haul Cars and Trucks Tons

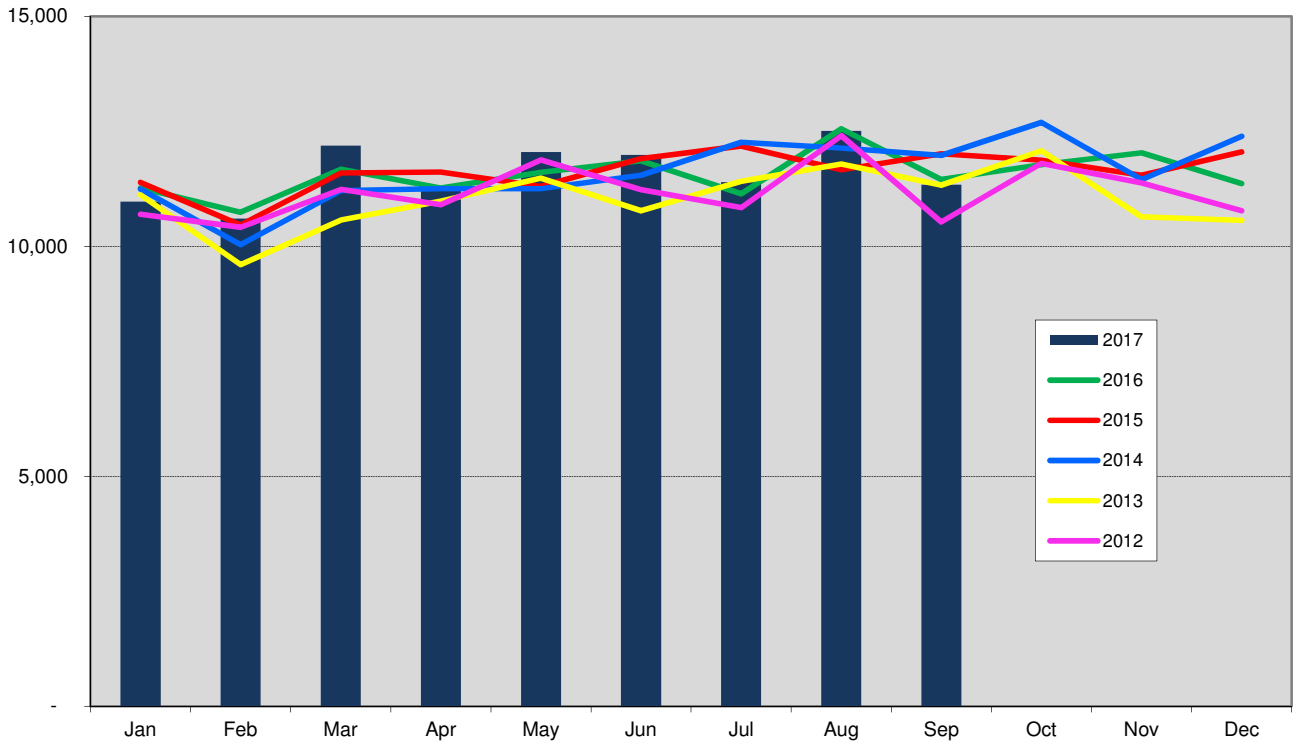


The North Transfer Station was closed from January 2014 - November 2016 for a rebuild.

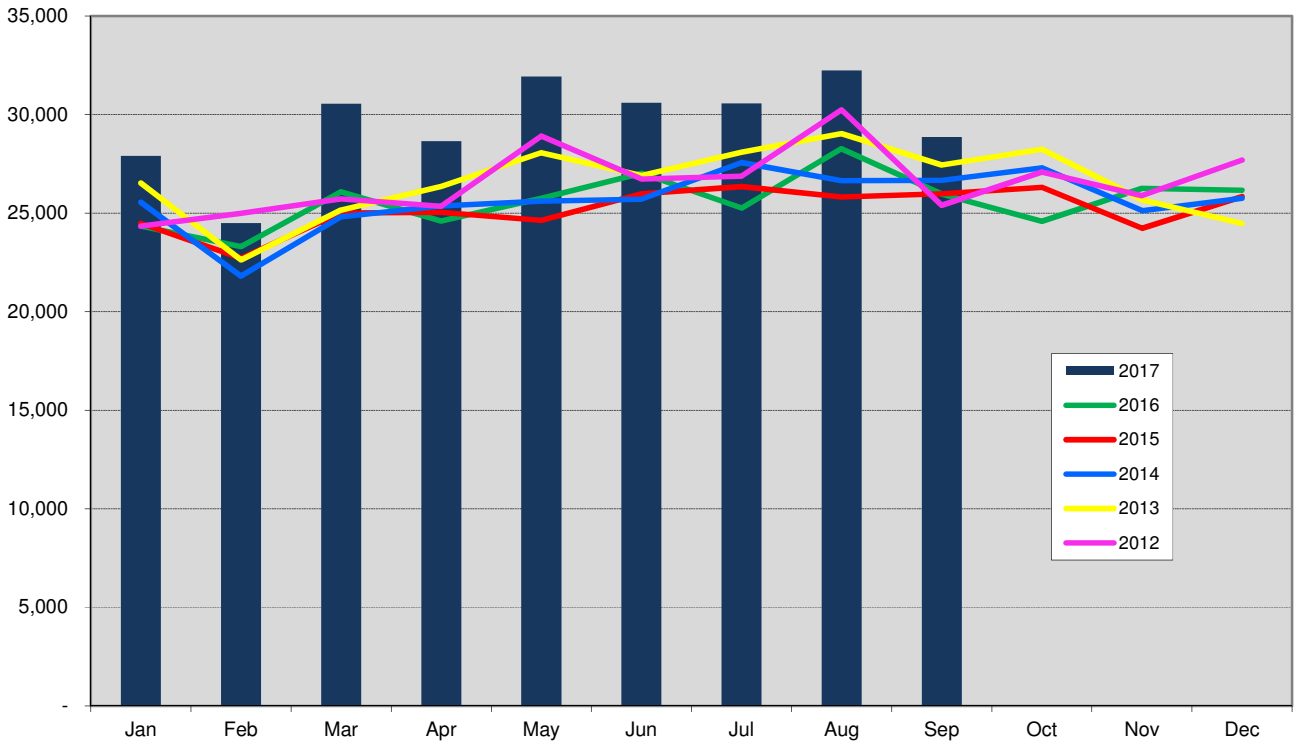
### CITY OF SEATTLE RESIDENTIAL COLLECTION Total City Tons



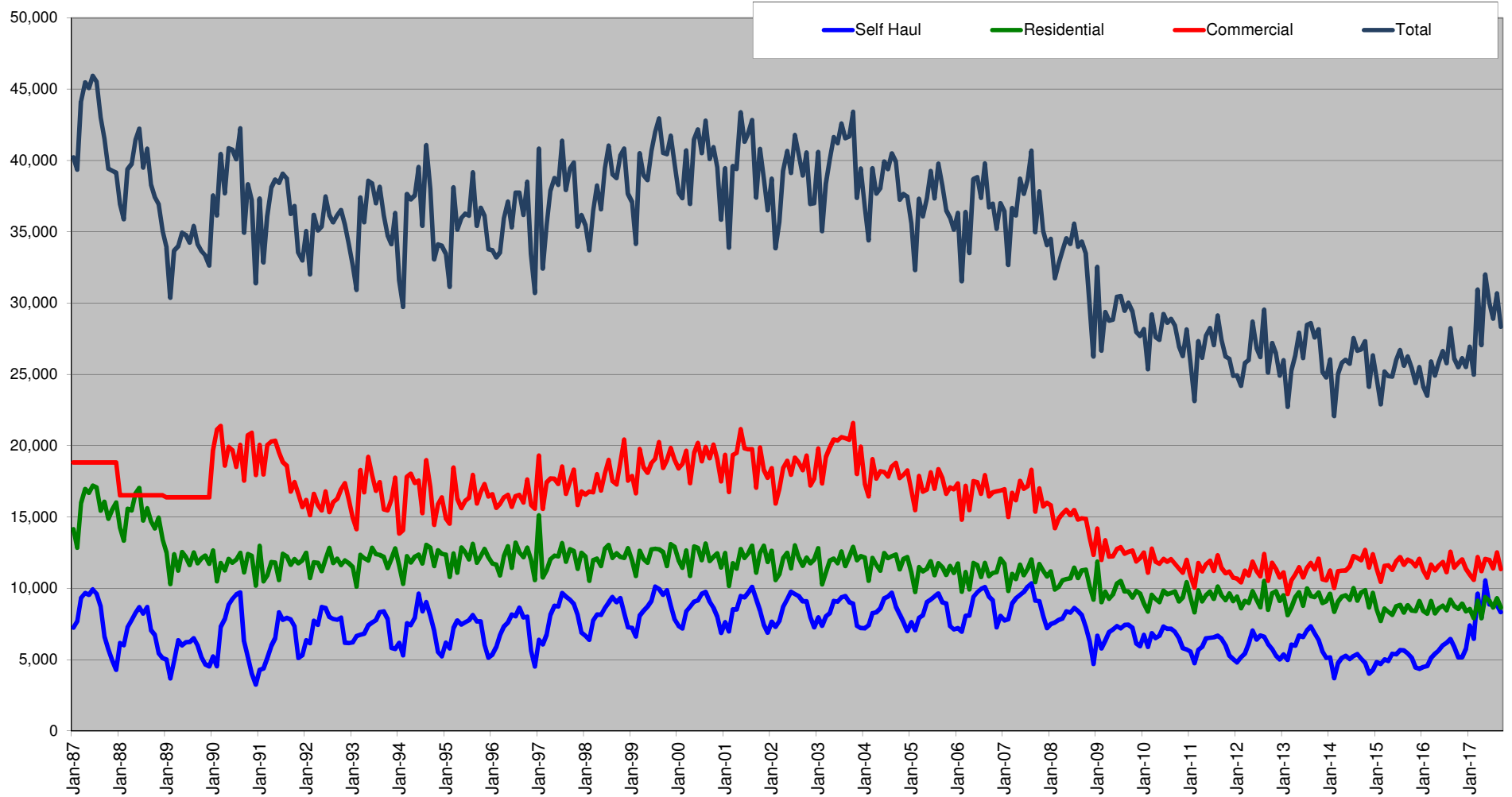
### CITY OF SEATTLE Commercial Garbage Total Tons Collected



### CITY OF SEATTLE TOTAL OUTBOUND TONS Total Tons Delivered to Arlington Landfill

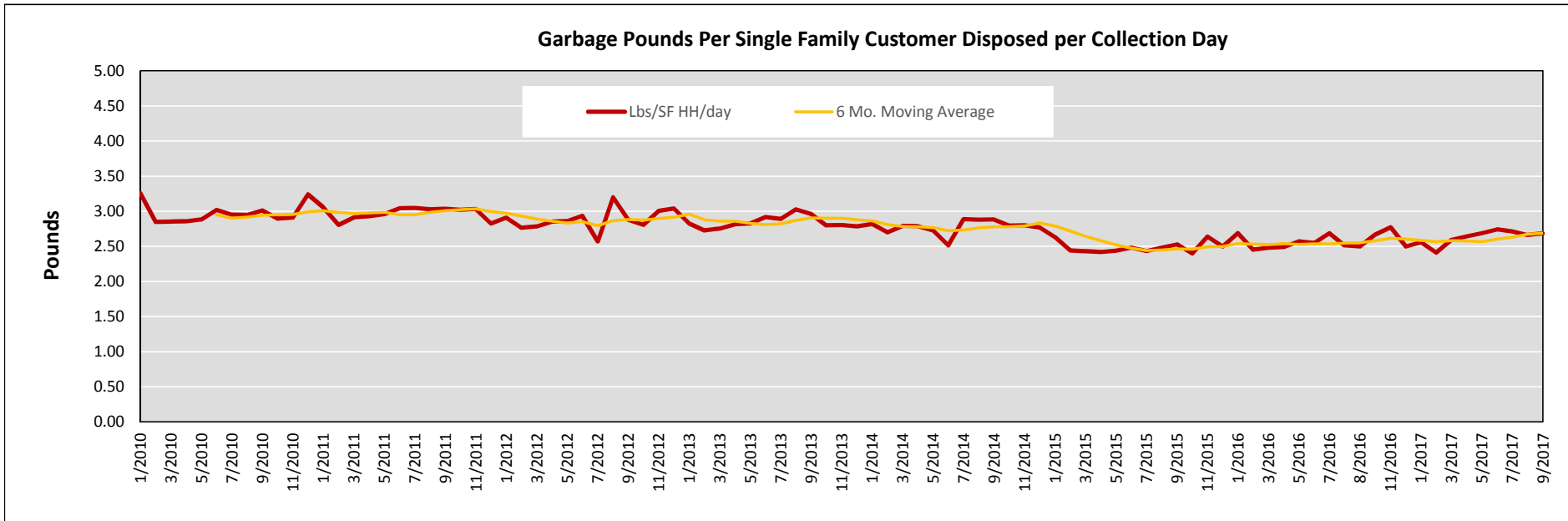


# City of Seattle Garbage Disposal



Monthly commercial tonnage for 1987-1989 estimated from annual data.

## Effects of the 2015 ban on organics in the garbage container.



Notes:

- April 2009      Organics collection changes from biweekly to weekly collection and is mandatory for single family customers
- September 2011      Organics service is mandatory for multi family customers
- January 2015      Organics are banned from the garbage for all customers