

ORGANICS REPORT

4th Quarter 2016

(Formerly Known as Yard Waste Report)

Seattle Public Utilities, Economic Services Section

Report Date: April 4, 2017

Phone: (206) 684-4143

Tonnage Breakdown

Self Haul¹

Q4 2016:	868 Tons	6.2% decrease vs. same period in 2015
Cumulative YTD Self Haul:	4,394 Tons	4.0% increase vs. same period in 2015

Residential

(single family and multi- family)

Q4 2016:	23,288 Tons	3.5% decrease vs. same period in 2015
Cumulative YTD Curbside:	91,375 Tons	2.4% increase vs. same period in 2015

Commercial

(contract and non contract tons)

Q4 2016:	77,689 Tons	13.5% increase vs. same period in 2015
Cumulative YTD Commercial:	66,382 Tons	12.8% increase vs. same period in 2015

Organics Subscription Information by Premises² Type

Residential customers can request Exempt service if they do backyard food waste composting. "Curb" service is the same as can premise service; the customer moves the can out to the curb for collection. "On Site" service does not require the customer to move their container(s) out to the curb, similar to dumpster service. "Liner" service means a new biodegradable liner is provided after each collection.

Residential Single Family Premises by Subscription Type

Dec-16	13 gal	32 gal	90 gal	Total Signed Up	Exempt
Single Family Premises	32,979	21,256	92,335	146,204	4,519
%	23%	15%	63%	97%	3%

Residential Multi Family Premises by Subscription Type

Dec-16	Curb No Liner	Curb Liner	Onsite Liner	Total Signed Up	Exempt
Multifamily Premises	2,012	3,238	1,197	5,010	29
%	32%	51%	19%	96%	0%

Commercial Subscriptions³

Dec-16	Contract Commercial	Non Contract Commercial	Total Commercial Subscriptions
# Subscriptions	1,951	2,459	4,410
2016 vs 2015	3%	2%	2%

1 There have been fewer Self Haul trips and tons due to the closure of the North Recycle & Disposal Station on Jan 20, 2015 for a rebuild.

2 A premise is roughly equal to a building in our billing system. An apartment building is typically equal to one premise.

3 The large increase in subscriptions coincides with the ban on all organics in the garbage which began January 1, 2015.

Basics of Residential Organics Program

Service: Beginning April 2009, collection frequency increased from bi-weekly to weekly pickup. All single family customers are required to sign up for organics service or request an exemption if they have backyard food waste composting. As of September 2011 multifamily and multiplex customers are also required to sign up for organics service. Multifamily customers can sign up for residential can/cart curbside service or onsite can/cart service. (Curbside service requires the customer to bring their container to the curb; onsite service does not require the customer to move their container.) Liner service, which includes a biodegradable plastic liner placed in the can or cart after each collection, is also available to multifamily customers.

MATERIALS: Leaves, grass clippings, prunings 4 inches or less in diameter. Starting in April 2009, all food waste and food soiled paper are allowed in the cart. **As of January 1, 2015, Organics, including food waste, compostable paper, and yard waste are not allowed in the curbside garbage container.**

Fees: Monthly Variable Can/Cart Prices: 13 gal = \$5.65, 32 gal = \$8.50, 96 gal = \$10.85

Basics of Self Haul Program

SERVICE: Two city owned recycle and disposal stations accept organics during regular operating hours. Yard waste must be separated and cannot be disposed of as garbage.

FEES: **Cars:** \$20.00 per trip (compared to \$30.00 per trip for garbage).
Trucks: \$110.00 per ton (compared to \$145.00 per ton for garbage).

Basics of Commercial Program

SERVICE: Seattle has contracts with Waste Management and Cleanscapes for garbage and organics service. Customers can sign up with their contract garbage hauler for organics service. In addition, Seattle commercial customers can choose organics service through a hauler outside of the city contracts. This is referred to as "non-contract" organics service.

MATERIALS: All food scraps (including meat, fish, dairy and produce), food soiled paper, waxed cardboard, and yard debris. Beginning January 1, 2015 all organics materials are banned from the garbage.

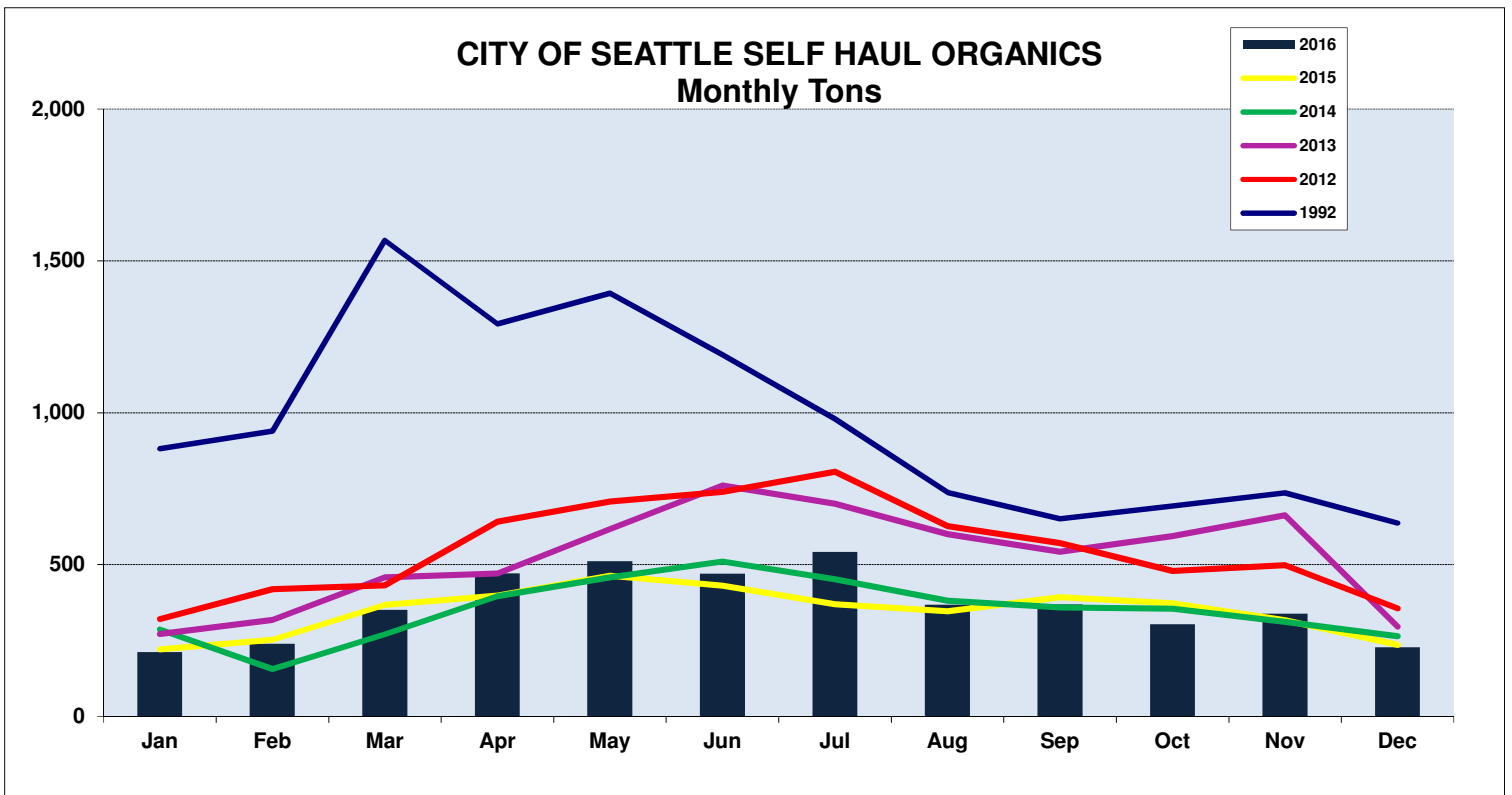
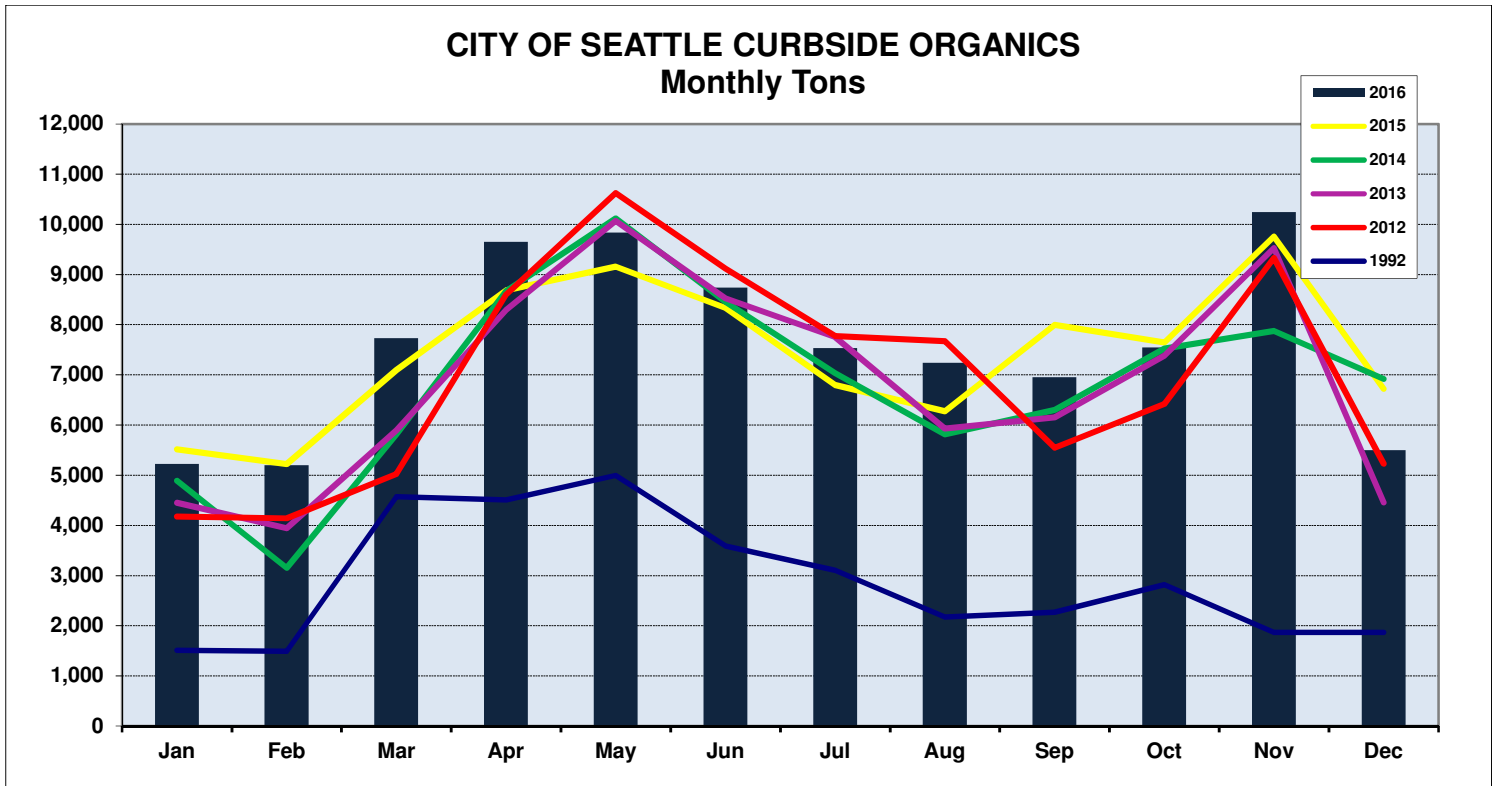
FEES: Approximately 32% below garbage prices. (Non-contract prices vary.)

CITY OF SEATTLE ORGANICS PROGRAM

		TONNAGE DATA									ACCOUNT SIGN-UP DATA					
Year	Month	SELF HAUL			CURBSIDE				COMMERCIAL ³			RESIDENTIAL ⁵		COMMERCIAL		
		North	South	Total	WM	USD	CS	Total	Contract	Non Contract	Total	accounts ⁶	Lbs/Acct	Contract	NonContract	Total
2015	1		221	221	3,022		2,492	5,514	243	4,158	4,401	148,286	74	1,531	2,161	3,692
2015	2		252	252	2,975		2,248	5,222	98	4,243	4,341	148,453	70	1,654	2,234	3,888
2015	3		367	367	4,139		2,961	7,100	150	4,239	4,389	148,720	95	1,713	2,240	3,953
2015	4		398	398	5,137		3,549	8,686	285	4,566	4,851	148,952	117	1,758	2,357	4,115
2015	5		463	463	5,424		3,731	9,155	288	4,548	4,837	149,196	123	1,812	2,277	4,089
2015	6		431	431	4,938		3,398	8,336	272	4,575	4,847	149,418	112	1,859	2,277	4,136
2015	7		370	370	3,948		2,851	6,799	323	4,739	5,062	149,571	91	1,860	2,339	4,199
2015	8		346	346	3,644		2,629	6,273	323	4,752	5,075	149,676	84	1,862	2,361	4,223
2015	9		393	393	4,539		3,460	7,999	315	4,791	5,106	149,776	107	1,877	2,383	4,260
2015	10		373	373	4,314		3,333	7,647	339	4,870	5,209	149,756	102	1,894	2,402	4,296
2015	11		317	317	5,284		4,474	9,758	311	4,870	5,182	149,765	130	1,899	2,415	4,314
2015	12		236	236	3,649		3,073	6,723	307	4,856	5,163	149,818	90	1,902	2,416	4,318
2016	1		211	211	2,910		2,316	5,226	359	4,845	5,203	149,835	70	1,912	2,405	4,317
2016	2		238	238	2,900		2,298	5,198	290	4,842	5,131	149,853	69	1,921	2,410	4,331
2016	3		350	350	4,405		3,323	7,729	305	4,889	5,194	149,992	103	1,949	2,406	4,355
2016	4		470	470	5,727		3,922	9,649	288	5,143	5,431	150,161	129	1,935	2,444	4,379
2016	5		511	511	5,800		4,033	9,833	366	5,113	5,479	150,351	131	1,954	2,432	4,386
2016	6		469	469	5,056		3,678	8,734	306	5,107	5,413	150,524	116	1,938	2,439	4,377
2016	7		541	541	4,383		3,149	7,532	305	5,239	5,544	150,624	100	1,944	2,454	4,398
2016	8		367	367	4,244		2,992	7,236	378	5,239	5,617	150,748	96	1,951	2,450	4,401
2016	9		368	368	4,015		2,936	6,951	459	5,222	5,680	150,864	92	1,947	2,453	4,400
2016	10		303	303	4,229		3,318	7,546	560	5,368	5,929	150,981	100	1,956	2,458	4,414
2016	11		336	336	5,454		4,790	10,243	544	5,379	5,923	151,097	136	1,963	2,455	4,418
2016	12		168	168	2,983		2,515	5,498	491	5,347	5,838	151,213	73	1,951	2,459	4,410
Total 2016			4,333	4,333	52,105		39,269	91,375	4,650	61,732	66,382	2016 Avg	101		2016 Avg	4,382
Total 2015 ⁵			4,167	4,167	51,013		38,200	89,213	3,255	55,207	58,462	2015 Avg	100		2015 Avg	4,124
Total 2014 ⁴		100	4,099	4,199	47,276		35,312	82,588	1,875	48,237	50,111	2014 Avg	93		2014 Avg	2,625
Total 2013		3,219	3,071	6,290	46,960		35,430	82,390	2,101	43,980	46,081	2013 Avg	94		2013 Avg	2,457
Total 2012		3,245	3,348	6,593	47,599		36,067	83,666	1,977	40,637	42,614	2012 Avg	97		2012 Avg	2,242
Total 2011		3,449	3,345	6,794	45,777		34,036	79,813	2,686	38,101	40,787	2011 Avg	94		2011 Avg	2,047
Total 2010		3,715	3,966	7,682	46,564		33,388	79,952	2,113	35,139	37,252	2010 Avg	95		2010 Avg	1,648
Total 2009 ²		4,775	5,374	10,149	42,648	4,455	27,127	74,230	1,763	29,961	31,724	2009 Avg	90		2009 Avg	1,243
Total 2008		5,530	6,363	12,667	28,348	28,016		56,364	2,260	24,902	27,162	2008 Avg	87		2008 Avg	930
Total 2007		6,731	7,516	14,247	27,447	27,126		54,573	5,023	9,748	14,771	2007 Avg	87			
Total 2006:		6,953	7,323	14,276	26,125	25,414		51,539	7,123	280	7,403	2006 Avg	85			
Total 2005:		6,598	7,328	13,925	22,009	20,595		42,603				2005 Avg	74			
Total 2004:		7,729	7,177	14,905	19,670	18,815		38,485				2004 Avg	69			
Total 2003:		7,559	6,597	14,156	17,094	16,830		33,923				2003 Avg	62			
Total 2002:		7,844	6,522	14,366	17,086	17,417		34,503				2002 Avg	70			
Total 2001:		8,279	6,755	15,034	18,412	18,578		36,990				2001 Avg	NA			
Total 2000:		8,280	5,752	14,031	18,240	15,797		34,037				2000 Avg	66			
Total 1999:		8,186	5,506	13,692	28,080	11,657		39,737				1999 Avg	78			
Total 1998:		8,122	4,912	13,034	28,286	12,260		40,546				1998 Avg	79			
Total 1997:		8,574	5,563	14,137	30,017	13,113		43,130				1997 Avg	84			
Total 1996:		7,341	4,186	11,527	27,491	11,842		39,333				1996 Avg	76			
Total 1995:		7,567	4,596	12,163	29,122	11,622		40,745				1995 Avg	75			
Total 1994:		7,045	4,952	11,997	26,099	10,974		37,073				1994 Avg	72			
Total 1993 ¹ :		8,019	5,423	13,442	30,113	12,582		42,695				1993 Avg	78			
Total 1992:		6,430	5,124	11,553	24,547	10,243		34,790				1992 Avg	61			
Total 1991:		8,814	5,908	14,722	28,103	11,100		39,203								
Total 1990:		7,339	5,625	12,964	25,936	10,845		36,780								
Total 1989:		6,495	4,753	11,249	22,812	8,845		31,657								

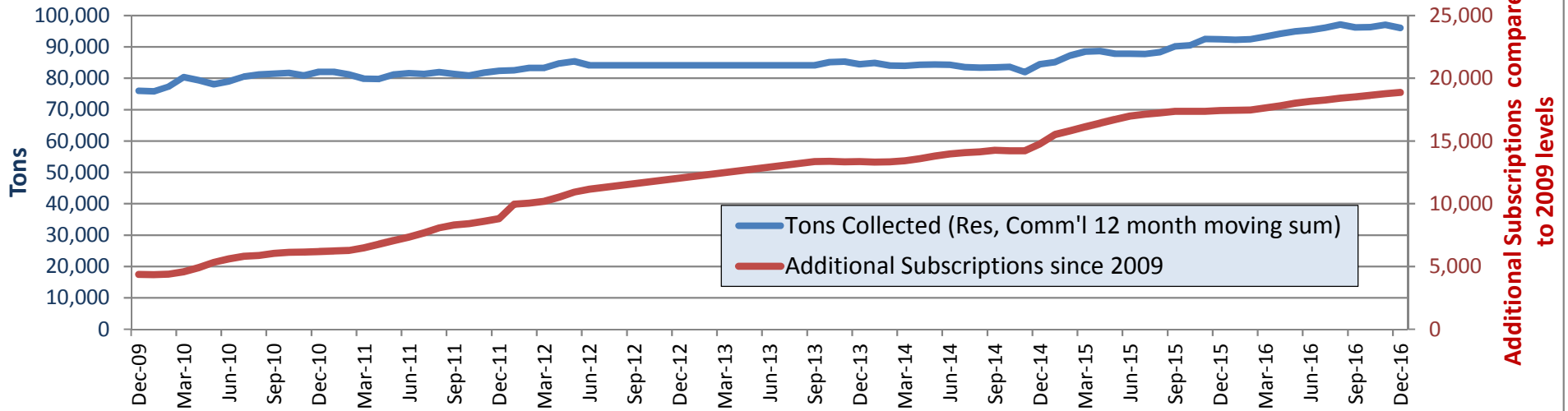
- Note that the fairly large increase in tonnage from 1992 to 1993 is due to two factors:
 - 1992 tonnage was the lowest since 1989 due to the drought and lawn watering ban which extended from June 1 - November 2, 1992.
 - 1993 tonnage was high due to abundant precipitation in the spring and summer months.
- Some commercial curbside can/cart organics are included in residential curbside tons. New 10-yr contracts began 3/30/2009. CS (Cleanscapes) and WM (Waste Management) are the contracted haulers.
- This table does not include some commercial non-compost food waste collection such as fats, oils and grease. This additional food waste is captured in our annual recycle survey and in our calculation of Seattle's overall recycling rate. Some Non Contract tons are reported quarterly.
- North Recycle & Disposal Station closed on Jan 20, 2014 and re-opened Nov 28, 2016 after a rebuild.

Beginning Feb 2014 cars are weighed. Prior to this, car weights were calculated at 258lbs based on composition study results.
- As of Jan 2015, organics, including food waste, compostable paper and yard waste are not allowed in the curbside garbage container.
- October 2016: New definition of Single Family premise changed to prems with 4 or fewer dwelling units. Multi Family defined as premises with 5 or more dwelling units.



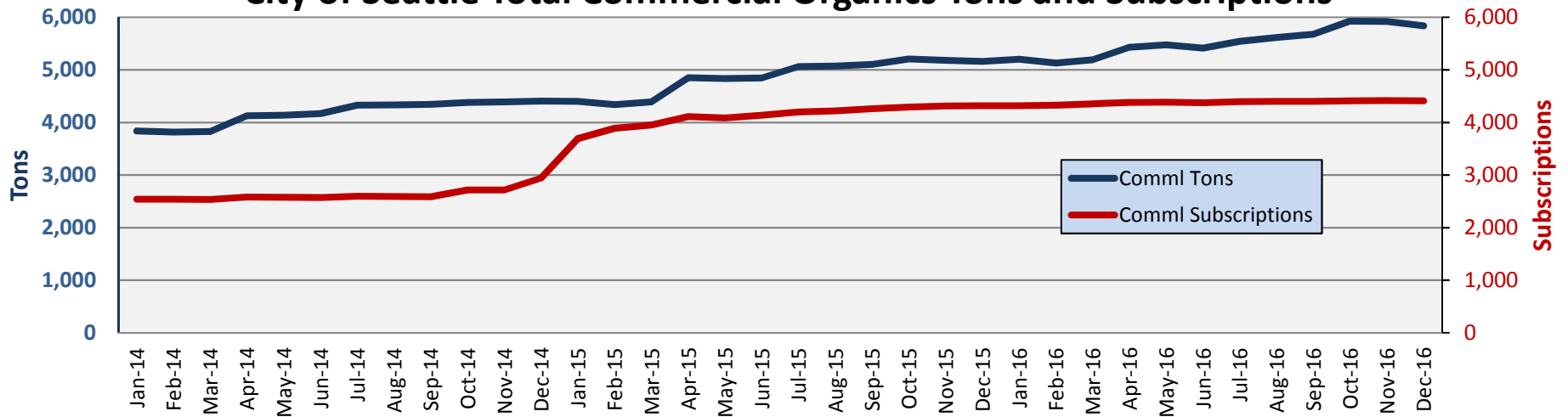
The North Transfer Station closed on Jan 20, 2014 and re-opened on Nov 28, 2016 after rebuild.

CITY OF SEATTLE TOTAL CONTRACTED ORGANICS TONS COLLECTED COMPARED TO ADDITIONAL SUBSCRIPTION LEVELS SINCE 2009 ¹



1. In April 2009 subscription to organics service became mandatory for single family residents. In September 2011 mandatory subscription to organics service expanded to multi-family customers.
2. Drier and warmer than average weather since 2013 contributed to a drop in Organics tonnage. (see weather charts for more details)

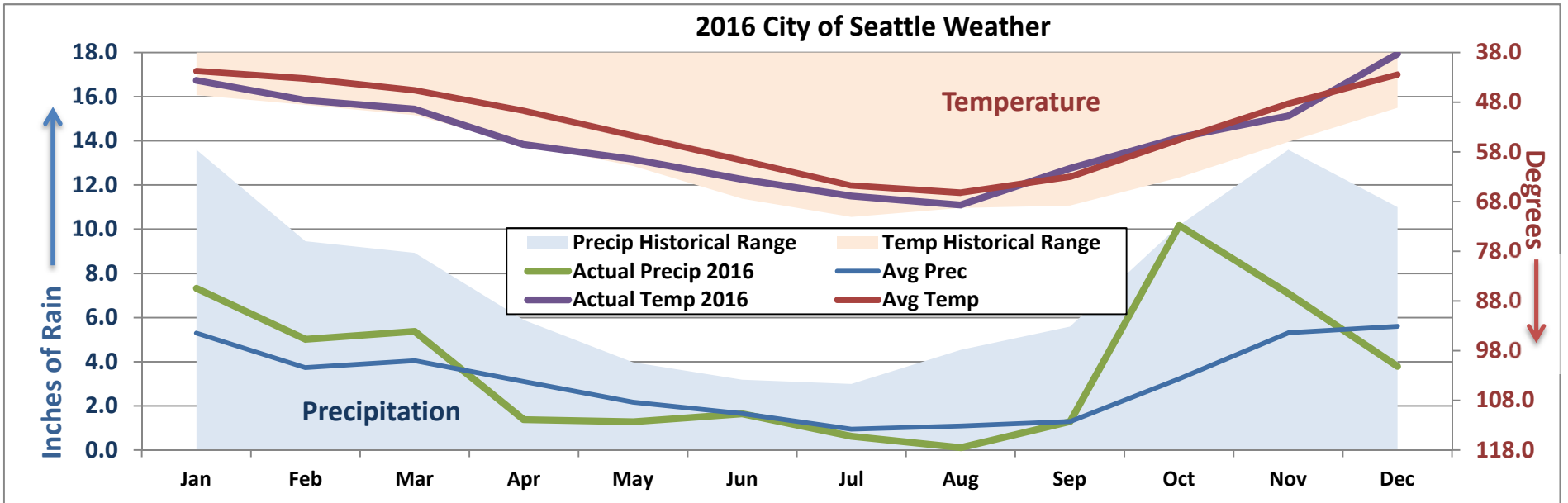
City of Seattle Total Commercial Organics Tons and Subscriptions



Non contract portion of commercial tons and subscriptions are reported quarterly.
 Ban on all Organics in the garbage began on January 1, 2015.

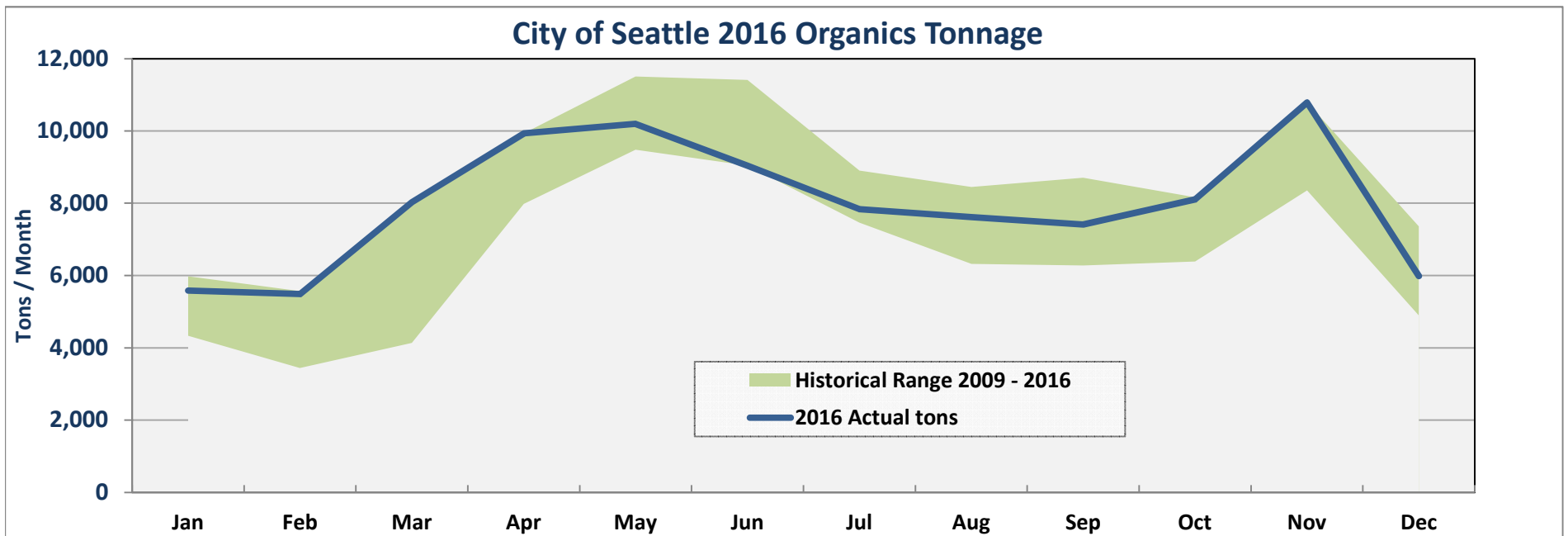
Weather Impacts on Organics Tonnage

2016 City of Seattle Weather



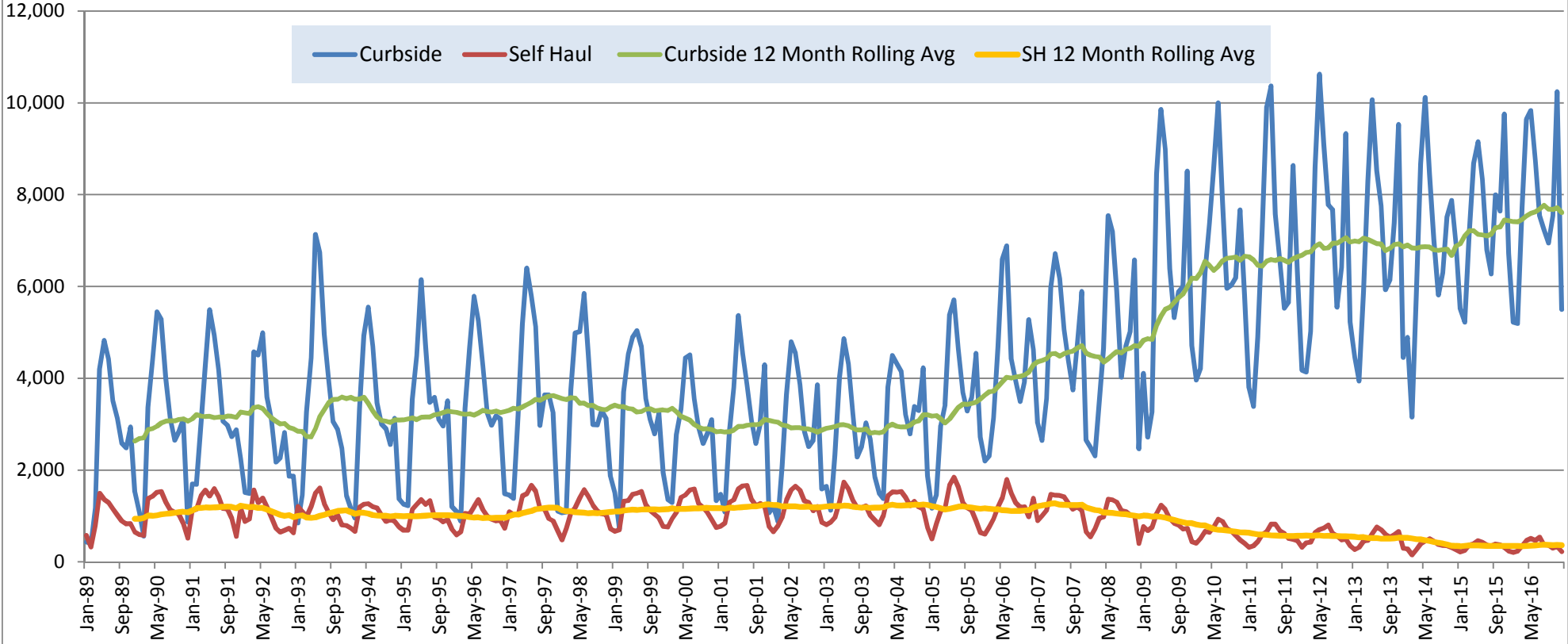
The blue and orange areas show the maximum and minimum precipitation and temperature ranges since 1977.

City of Seattle 2016 Organics Tonnage



The green area shows the minimum and maximum range of tonnage since 2009.

CITY OF SEATTLE RESIDENTIAL CURBSIDE AND SELF HAUL ORGANICS TONS



Some of the 2014 decline in SH tons can be attributed to the closing of The North Transfer Station on Jan 20, 2014 for a rebuild.