

# RECYCLING PROGRAMS

4th Quarter 2012

Seattle Public Utilities, Economic Services Section

Report Date: January 31, 2013

Phone: (206) 684-4143

## Tonnage Breakdown

### Single Family Tons (Without Contaminants)

Q4 2012:	14,591 Tons	2.5%	increase vs. same period in 2011
Cumulative Single Family:	55,317 Tons	3.3%	decrease vs. same period in 2011

### Multi Family Tons (Without Contaminants)

Q4 2012:	5,586 Tons	14.4%	increase vs. same period in 2011
Cumulative Multi Family:	20,599 Tons	11.1%	increase vs. same period in 2011

### Total Residential Tons (Without Contaminants)

Q4 2012:	20,177 Tons	5.5%	decrease vs. same period in 2011
Cumulative Residential:	75,916 Tons	2.3%	decrease vs. same period in 2011

### Business Tons (Includes Contaminants)

Q4 2012:	774 Tons	16.9%	increase vs. same period in 2011
Cumulative Small Business:	2,874 Tons	6.9%	increase vs. same period in 2011

## Selected Statistics

Average Monthly Pounds Recyclables collected per Household YTD

Single Family:	63.1	(154,890 households)
Multi Family:	29.7	(125,698 households)

## Service Citywide:

Recycling service for single family households occurs every other week on the same day as garbage collection service. Beginning January 2005, for all materials except plastics, there is a recycling requirement which bans recyclables from being disposed of in garbage containers. Beginning January 2006, the recycling requirement is being enforced by not collecting garbage cans or dumpsters which contain more than 10% recyclables. Apartment managers are subject to a fine for repeated violation of the ban on recyclables in garbage dumpsters. Exemptions are granted when there is lack of space for recycle containers.

Apartment Buildings with 5 or more units are considered part of the Multi Family Recycling Program for purposes of tracking services. Apartment buildings can choose toter or dumpster style service.

The Business Recycling Program is available to businesses with a Seattle commercial garbage account and is limited to two recycling carts, collected every other week. The Business Recycling Program is free to qualifying businesses.

## Materials Citywide:

Newspaper, mixed paper, glass, aluminum, tin, plastic bottles, ferrous metals, plastic bags (grocery bags), plastic containers (dairy/yogurt containers), milk cartons and juice boxes. In addition, up to 2 gallons of used motor oil may be set out in separate 1 gallon containers each collection day. Electronics and appliances will be picked up curbside and recycled safely upon request for a fee. (\$20 per electronic item, \$30 per appliance, \$38 per appliance containing CFC's)

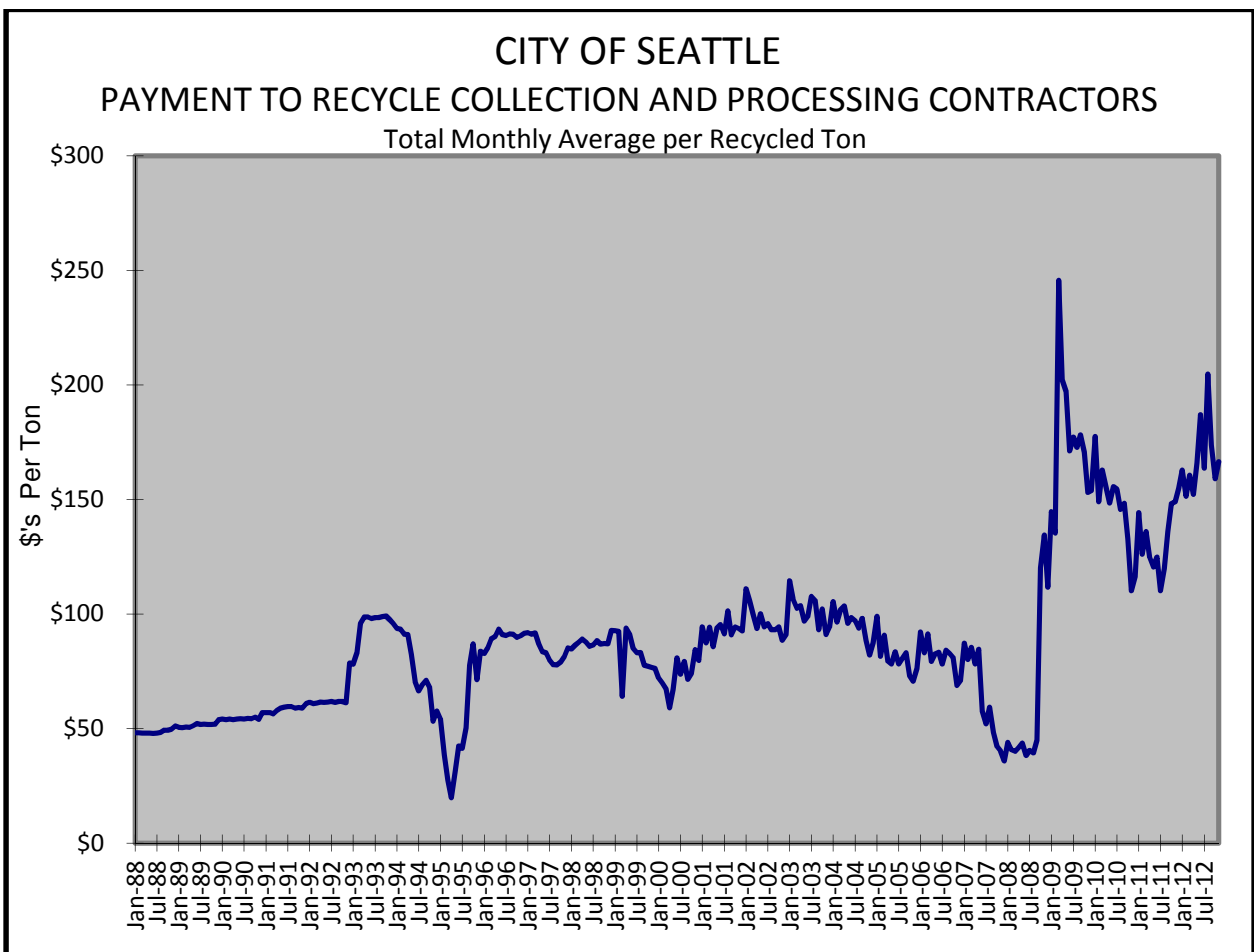
**Program Costs<sup>1</sup>**

Citywide Yearly Cumulative Average Cost/Ton

1988	\$ 48.55	1995	\$ 50.27	2002	\$ 96.46	2009	\$171.38
1989	\$ 51.33	1996	\$ 89.15	2003	\$100.62	2010	\$148.54
1990	\$ 54.20	1997	\$ 84.59	2004	\$ 95.82	2011	\$129.41
1991	\$ 58.28	1998	\$ 86.88	2005	\$ 81.72	2012	\$166.45
1992	\$ 61.41	1999	\$ 86.39	2006	\$ 81.44		
1993	\$ 93.25	2000 <sup>2</sup>	\$ 72.78	2007	\$ 64.83		
1994	\$ 77.38	2001	\$ 91.64	2008	\$ 54.28		

**Avg. Cost for 3rd Quarter 2012: \$166.36**

*(Payment to contractors falls when market prices for recyclable materials increase.)*



<sup>1</sup> Figures shown reflect the average amount SPU pays the recycling processing and collection contractors, which is a total contract price plus (or minus) a variable amount determined by market prices. In other words, the figures reflect the cost to the city of collection and sorting (including payment for disposal of contaminants). Revenue received for sale of the materials belongs to the processing contractor and as such these cost figures should not be construed as the total cost of recycling; figures also do not include costs such as liquidated damages, SPU program administration or public education.

<sup>2</sup> As of April 2000 recycling program costs include curbside (single family) apartment (multi-family) and small business programs. Prior to April 2000, the costs shown are only for the curbside program.

SINGLE FAMILY CAN TONS COLLECTED (Includes contaminants)						SINGLE FAMILY CAN CUSTOMER DATA						
Yr	Mo	Cleanscapes	Waste Management	Total SF Tons	Cumulative SF Tons	CS Curb Bldgs	WM Curb Bldgs	Total Curb Bldgs	CS Curb Households	WM Curb households	Total Curb Households	LBS PER HOUSEHOLD
2011	1	2,359.4	3,308.9	5,668.3	5,668.3	57,437	89,947	147,384	60,726	93,191	153,917	73.7
2011	2	1,897.9	2,482.1	4,380.0	10,048.3	57,450	89,944	147,394	60,739	93,173	153,912	56.9
2011	3	2,212.1	2,912.2	5,124.3	15,172.5	57,477	90,013	147,490	60,745	93,249	153,994	66.6
2011	4	2,056.4	2,930.2	4,986.6	20,159.1	57,518	90,112	147,630	60,788	93,372	154,160	64.7
2011	5	2,196.5	2,866.0	5,062.5	25,221.6	57,555	90,206	147,761	60,824	93,470	154,294	65.6
2011	6	2,226.5	2,874.3	5,100.8	30,322.4	57,606	90,289	147,895	60,876	93,556	154,432	66.1
2011	7	2,049.5	2,739.1	4,788.6	35,111.0	57,614	90,334	147,948	60,889	93,602	154,491	62.0
2011	8	2,312.2	3,065.9	5,378.1	40,489.1	57,647	90,378	148,025	60,915	93,635	154,550	69.6
2011	9	2,192.8	2,847.6	5,040.4	45,529.5	57,661	90,396	148,057	60,937	93,657	154,594	65.2
2011	10	2,064.5	2,661.6	4,726.1	50,255.5	57,643	90,330	147,973	60,927	93,597	154,524	61.2
2011	11	2,293.0	2,907.1	5,200.1	55,455.6	57,594	90,288	147,882	60,890	93,562	154,452	67.3
2011	12	2,324.7	2,823.9	5,148.6	60,604.2	57,579	90,295	147,874	60,880	93,577	154,457	66.7
2012	1	2,295.4	2,544.0	4,839.4	4,839.4	57,556	90,266	147,822	60,870	93,554	154,424	62.7
2012	2	1,998.3	2,747.9	4,746.2	9,585.6	57,625	90,331	147,956	60,728	93,629	154,357	61.5
2012	3	2,073.8	2,553.8	4,627.6	14,213.2	57,649	90,355	148,004	60,796	93,653	154,449	59.9
2012	4	2,030.5	2,525.2	4,555.7	18,768.9	57,697	90,436	148,133	60,847	93,737	154,584	58.9
2012	5	2,256.2	2,798.2	5,054.4	23,823.3	57,764	90,525	148,289	60,934	93,858	154,792	65.3
2012	6	2,082.7	2,640.7	4,723.4	28,546.6	57,815	90,575	148,390	60,972	93,878	154,850	61.0
2012	7	2,158.7	2,208.2	4,366.9	32,913.5	57,838	90,612	148,450	60,989	93,927	154,916	56.4
2012	8	2,266.2	3,437.8	5,704.0	38,617.5	57,856	90,676	148,532	61,011	94,010	155,021	73.6
2012	9	2,001.8	2,505.0	4,506.8	43,124.3	57,852	90,691	148,543	61,004	94,026	155,030	58.1
2012	10	2,264.1	2,828.3	5,092.5	48,216.8	57,833	90,664	148,497	60,992	94,003	154,995	65.7
2012	10	2,329.5	2,876.1	5,205.6	53,422.4	57,789	90,645	148,434	60,950	93,997	154,947	67.2
2012	10	2,290.0	2,862.3	5,152.2	58,574.7	57,759	90,625	148,384	60,913	93,977	154,890	66.5
TOTAL CITY SINGLE FAMILY TONNAGE BY MATERIAL DATA (Estimated from periodic composition studies)												
	FERROUS					NEWS PAPER	PLASTICS	TIN	CONTAM- INANTS	TOTAL w/cont	TOTAL w/o cont	AVG LBS PER HOUSEHOLD
	ALUM	METAL	GLASS	MIXED	PAPER							
2012 SF Total:	566.8	282.3	10,476.2	28,607.2	11,919.0	2,693.9	771.7	3,257.5	58,574.7	55,317.2	63.1	
2011 SF Total:	586.4	292.1	10,839.2	29,598.4	12,332.0	2,787.3	798.5	3,370.3	60,604.2	57,233.9	65.5	
2010 SF Total:	590.0	293.9	10,904.5	29,776.6	12,406.3	2,804.1	803.3	3,390.6	60,969.2	57,578.6	66.1	
2009 SF Total:	607.0	302.4	11,219.1	30,635.8	12,764.2	2,885.0	826.5	3,488.5	62,728.5	59,240.0	68.3	
2008 SF Total:	329.9	150.8	11,361.8	26,594.3	21,475.4	1,518.6	525.5	1,270.4	63,226.7	61,956.3	68.8	
2007 SF Total:	352.6	161.2	12,132.4	28,372.8	22,919.0	1,621.1	561.4	1,354.2	67,474.7	66,120.5	72.6	
2006 SF Total:	348.7	159.4	11,996.9	28,048.8	22,659.4	1,602.9	555.2	1,338.5	66,709.9	65,371.5	72.5	
2005 SF Total:	342.4	156.5	11,770.0	27,496.3	22,219.5	1,572.2	545.0	1,311.2	65,413.1	64,101.9	71.5	
2004 SF Total:	414.1	88.5	10,929.5	26,217.6	21,932.1	1,452.8	725.4	2,542.2	64,302.2	61,760.0	69.8	
2003 SF Total:	400.1	85.5	10,560.2	25,333.0	21,192.3	1,403.8	700.9	2,456.8	62,132.5	59,675.7	67.7	
2002 SF Total:	398.4	84.7	10,518.2	25,216.8	21,092.5	1,397.5	698.0	2,440.5	61,846.6	59,406.1	67.9	
2001 SF Total:	397.4	84.2	10,493.3	25,149.3	21,034.7	1,393.8	696.3	2,431.5	61,680.4	59,249.0	66.6	
2000 SF Total:	490.2	85.5	11,963.1	24,986.6	22,499.7	1,442.1	747.8	2,432.2	64,410.0	62,215.0	69.9	
1999 SF Total:	799.6	81.8	12,969.2	22,870.2	23,947.3	727.3	1,439.9	1,026.8	63,862.0	62,835.2	70.6	
1998 SF Total:	762.8	78.2	12,387.9	21,877.6	22,868.9	694.6	1,369.7	993.3	61,032.7	60,039.4	67.5	
1997 SF Total:	741.0	75.9	12,029.0	21,233.7	22,208.0	674.5	1,331.8	960.6	59,254.5	58,293.9	67.5	
1996 SF Total:	693.1	71.0	11,249.4	19,855.4	20,769.0	630.8	1,245.9	897.5	55,412.0	54,514.5	61.3	
1995 SF Total:	707.7	72.5	11,490.8	20,288.7	21,213.5	644.3	1,271.3	919.6	56,608.4	55,688.7	63.1	
1994 SF Total:	696.3	71.3	11,307.4	19,967.5	20,874.6	634.0	1,250.6	905.9	55,707.7	54,801.8	61.6	
1993 SF Total:	652.8	66.9	10,606.8	18,742.1	19,579.3	557.5	1,171.0	854.4	52,268.0	51,376.4	57.7	
1992 SF Total:	862.8	NA	10,702.0	17,610.6	17,412.9	288.8	1,409.9	1,259.6	49,546.6	48,287.0	54.2	
1991 SF Total:	684.6	NA	9,540.4	19,537.8	16,103.2	268.3	1,423.7	1,004.4	48,562.4	47,558.0	53.4	
1990 SF Total:	895.1	NA	9,096.9	17,201.8	17,373.0	163.1	1,306.8	685.9	46,722.6	46,036.7	51.3	
1989 SF Total:	433.2	NA	8,671.4	15,149.6	15,115.6	88.9	1,279.9	121.0	40,859.6	40,738.6	46.2	
1988 SF Total:	242.3	NA	4,833.6	7,739.7	10,481.4	0.0	649.2	39.4	23,985.6	23,946.2	31.9	
TOTAL CITY SINGLE FAMILY PERCENTAGE BREAKDOWN BY MATERIAL (Estimated from periodic composition studies)												
	FERROUS					NEWS PAPER	PLASTICS	TIN	CONTAM- INANTS	TOTAL		
	ALUM	METAL	GLASS	MIXED	PAPER							
2009-2012 Avg:	1.0%	0.5%	17.9%	48.8%	20.3%	4.6%	1.3%	5.6%	100%			
2005-2008 Avg:	0.5%	0.2%	18.0%	42.0%	34.0%	2.4%	0.8%	2.0%	100%			
2001-2004 Avg:	0.6%	0.1%	17.0%	40.8%	34.1%	2.3%	1.1%	3.9%	100%			
2000 Avg:	0.8%	0.1%	18.6%	38.8%	34.9%	2.2%	1.2%	3.8%	100%			
1993-1999 Avg:	1.2%	0.1%	20.3%	35.9%	37.5%	1.1%	2.2%	1.6%	100%			
1992 Avg:	1.7%	NA	21.6%	35.5%	35.1%	0.6%	2.8%	2.5%	100%			
1991 Avg:	1.4%	NA	19.6%	40.2%	33.2%	0.6%	2.9%	2.1%	100%			
1990 Avg:	1.9%	NA	19.5%	36.8%	37.2%	0.3%	2.8%	1.5%	100%			
1989 Avg:	1.1%	NA	21.2%	37.1%	37.0%	0.2%	3.1%	0.3%	100%			
1988 Avg:	1.0%	NA	20.2%	32.3%	43.7%	0.0%	2.7%	0.2%	100%			

1 Single Family refers to customers that receive can garbage service. Tonnage data includes contaminants.

MULTI FAMILY TONS COLLECTED (Includes contaminants)						MULTIFAMILY CUSTOMER DATA <sup>1</sup>								
Yr	Mo	Cleanscapes	Waste Management	Total Apt Tons	Cumulative Apt Tons	Cleanscapes Apt Bldgs	WM Apt Bldgs	Total Apt Bldgs	CS Apt Units	WM Apt Units	Total Apt Units	Units/ Bldg	Lbs/ Bldg	Lbs/ Unit
2011	1	1,097.4	451.2	1,548.6	1,548.6	3,053	2,232	5,285	81,115	40,115	121,230	23	586.0	25.5
2011	2	940.6	594.5	1,535.1	3,083.7	3,060	2,236	5,296	81,631	40,144	121,775	23	579.7	25.2
2011	3	1,121.1	685.5	1,806.6	4,890.2	3,067	2,236	5,303	81,774	40,412	122,186	23	681.3	29.6
2011	4	998.9	376.0	1,374.9	6,265.1	3,066	2,236	5,302	81,422	40,542	121,964	23	518.6	22.5
2011	5	1,051.0	651.9	1,702.9	7,968.0	3,062	2,240	5,302	81,231	40,886	122,117	23	642.3	27.9
2011	6	1,058.7	648.4	1,707.1	9,675.0	3,060	2,237	5,297	81,238	40,854	122,092	23	644.5	28.0
2011	7	973.8	612.8	1,586.6	11,261.6	3,062	2,242	5,304	81,290	40,959	122,249	23	598.3	26.0
2011	8	1,092.7	665.7	1,758.4	13,020.0	3,067	2,242	5,309	81,295	40,984	122,279	23	662.4	28.8
2011	9	1,029.9	638.8	1,668.7	14,688.7	3,073	2,247	5,320	81,568	41,095	122,663	23	627.3	27.2
2011	10	994.1	633.8	1,627.9	16,316.5	3,075	2,226	5,301	81,404	40,788	122,192	23	614.2	26.6
2011	11	1,071.8	689.0	1,760.8	18,077.3	3,073	2,230	5,303	81,506	40,837	122,343	23	664.1	28.8
2011	12	1,057.3	802.1	1,859.5	19,936.8	3,074	2,227	5,301	81,521	40,851	122,372	23	701.6	30.4
2012	1	1,097.5	777.9	1,875.4	21,812.2	3,077	2,226	5,303	81,533	40,831	122,364	23	707.3	30.7
2012	2	975.4	738.4	1,713.8	23,526.0	3,080	2,227	5,307	81,703	40,789	122,492	23	645.8	28.0
2012	3	1,032.0	771.6	1,803.7	25,329.7	3,085	2,228	5,313	81,826	40,833	122,659	23	679.0	29.4
2012	4	995.8	743.3	1,739.1	27,068.8	3,176	2,283	5,459	82,494	41,021	123,515	23	637.2	28.2
2012	5	1,089.3	810.8	1,900.1	28,968.9	3,181	2,284	5,465	82,932	41,058	123,990	23	695.4	30.6
2012	6	1,050.0	738.9	1,788.9	30,757.8	3,180	2,282	5,462	83,170	41,027	124,197	23	655.0	28.8
2012	7	1,071.2	619.1	1,690.3	32,448.1	3,177	2,280	5,457	83,092	41,020	124,112	23	619.5	27.2
2012	8	1,095.2	890.1	1,985.4	34,433.5	3,183	2,281	5,464	83,381	41,296	124,677	23	726.7	31.8
2012	9	961.7	681.6	1,643.3	36,076.8	3,191	2,285	5,476	83,442	41,312	124,754	23	600.2	26.3
2012	9	1,136.8	786.7	1,923.4	38,000.2	3,199	2,285	5,484	84,207	41,264	125,471	23	701.5	30.7
2012	9	1,194.8	869.6	2,064.4	40,064.6	3,200	2,289	5,489	84,212	41,317	125,529	23	752.2	32.9
2012	9	1,151.1	866.8	2,017.9	42,082.5	3,201	2,292	5,493	84,209	41,489	125,698	23	734.7	32.1
TOTAL MULTIFAMILY PERCENTAGE BREAKDOWN BY MATERIAL (Estimated from periodic composition studies)														
	FERROUS						CONTAM- INANTS	TOTAL w/cont	TOTAL w/o cont	Avg Lbs/Bldg	Avg Lbs/Unit			
	ALUM	METAL	GLASS	MIXED PAPER	NEWSPAPER	PLASTICS						TIN		
2012 MF Total:	164.2	62.7	3,785.4	11,816.4	3,770.3	792.6	206.9	1,546.9	22,145.6	20,598.7	679.5	29.7		
2011 MF Total:	147.8	56.5	3,407.9	10,637.9	3,394.3	713.6	186.3	1,392.6	19,936.8	18,544.2	626.7	27.2		
2010 MF Total:	155.7	59.5	3,589.4	11,204.5	3,575.1	751.6	196.2	1,466.8	20,998.8	19,532.0	668.8	29.6		
2009 MF Total:	143.8	54.9	3,315.7	10,350.2	3,302.5	694.3	181.3	1,355.0	19,397.8	18,042.8	621.9	28.1		
2008 MF Total:	90.4	106.2	3,854.6	9,275.5	6,014.2	441.0	150.3	529.8	20,461.9	21,951.6	626.9	28.7		
2007 MF Total:	93.0	109.4	3,964.5	9,539.0	6,186.5	453.6	154.6	544.9	21,045.5	20,500.6	647.0	30.2		
2006 MF Total:	87.1	104.2	3,705.6	8,902.9	5,790.8	424.1	144.6	509.2	19,668.4	19,159.2	605.8	28.8		
2005 MF Total:	79.8	94.5	3,400.4	8,177.0	5,309.0	389.1	132.6	467.3	18,049.7	17,582.4	582.3	27.6		
2004 MF Total:	82.3	30.7	2,690.8	6,638.0	5,556.4	259.6	128.3	464.2	15,850.3	15,386.0	554.1	26.3		
2003 MF Total:	76.8	28.6	2,509.7	6,190.4	5,180.8	242.0	119.6	432.9	14,780.8	14,347.9	532.6	25.6		
2002 MF Total:	71.5	26.6	2,331.1	5,754.6	4,822.7	225.3	111.4	402.5	13,745.6	13,343.1	509.3	24.5		
2001 MF Total:	70.0	26.0	2,282.6	5,636.3	4,725.9	220.7	109.2	394.2	13,465.0	13,070.8	550.7	25.9		
2000 MF Total:	65.0	17.8	2,050.6	5,269.2	4,004.9	179.9	103.5	292.2	11,983.2	11,691.0	497.0	25.0		
1999 MF Total:	68.6	NA	1,908.6	5,647.9	2,763.6	87.3	66.4	111.9	10,654.3	10,542.4	654.7	27.6		
1998 MF Total:	70.2	NA	1,835.2	5,020.4	2,978.4	99.6	106.1	129.0	10,238.8	10,109.8	669.2	28.1		
1997 MF Total:	68.9	NA	1,646.4	4,686.3	2,521.9	87.3	114.5	89.5	9,214.8	9,125.3	639.2	26.8		
1996 MF Total:	69.9	NA	1,527.3	3,296.6	3,041.2	78.7	113.3	61.8	8,188.7	8,126.9	613.5	24.8		
1995 MF Total:	49.6	NA	1,458.3	2,555.7	2,995.5	13.5	120.0	NA	7,192.4	7,192.4	608.2	22.9		
1994 MF Total:	51.3	NA	1,224.6	3,013.2	1,678.1	0.8	111.0	NA	6,079.0	6,079.0	657.8	23.6		
1993 MF Total:	47.0	NA	769.5	2,517.4	435.6	0.3	85.9	NA	3,855.7	3,855.7	646.0	20.2		
1992 MF Total:	3.3	NA	736.2	1,438.5	726.7	NA	68.7	NA	2,973.4	2,973.4	753.3	24.4		
1991 MF Total:	0.9	NA	410.6	661.7	732.7	NA	23.6	NA	1,829.5	1,829.5	733.5	23.4		
1990 MF Total:	NA	NA	228.7	500.8	358.4	NA	6.3	NA	1,094.2	1,094.2	712.1	22.8		
1989 MF Total:	NA	NA	69.9	42.7	192.8	NA	NA	NA	305.4	305.4	NA	NA		
MULTI FAMILY PERCENTAGE BREAKDOWN BY MATERIAL														
	FERROUS						CONTAM- INANTS	TOTAL						
	ALUM	METAL	GLASS	MIXED PAPER	NEWS PAPER	PLASTIC			TIN					
2009-2011 Avg:	0.7%	0.3%	17.1%	53.4%	17.0%	3.6%	0.9%	7.0%	100%					
2005-2008 Avg:	0.4%	0.5%	18.8%	45.3%	29.4%	2.2%	0.7%	2.6%	100%					
2001-2004Avg:	0.5%	0.2%	17.0%	41.9%	35.1%	1.6%	0.8%	2.9%	100%					
2000 Avg:	0.5%	0.1%	17.1%	44.0%	33.4%	1.5%	0.9%	2.4%	100%					
1999 Avg:	0.6%	NA	17.9%	53.0%	25.9%	0.8%	0.6%	1.1%	100%					
1998 Avg:	0.7%	NA	17.9%	49.0%	29.1%	1.0%	1.0%	1.3%	100%					
1997 Avg:	0.7%	NA	17.9%	50.9%	27.4%	0.9%	1.2%	1.0%	100%					
1996 Avg:	0.9%	NA	18.7%	40.3%	37.1%	1.0%	1.4%	0.8%	100%					
1995 Avg:	0.7%	NA	20.3%	35.5%	41.6%	0.2%	1.7%	NA	100%					
1994 Avg:	0.8%	NA	20.1%	49.6%	27.6%	0.0%	1.8%	NA	100%					
1993 Avg:	1.2%	NA	20.0%	65.3%	11.3%	0.0%	2.2%	NA	100%					
1992 Avg:	NA	NA	24.8%	48.4%	24.4%	NA	2.3%	NA	100%					
1991 Avg:	NA	NA	22.4%	36.2%	40.0%	NA	1.3%	NA	100%					
1990 Avg:	NA	NA	20.9%	45.8%	32.8%	NA	0.6%	NA	100%					
1989 Avg:	NA	NA	22.9%	14.0%	63.1%	NA	0.0%	NA	100%					

<sup>1</sup>This data represents apartment customers who are signed up for recycle service.

TOTAL CITY RESIDENTIAL RECYCLING TONS COLLECTED (Includes contaminants)										COMMERCIAL BUSINESS RECYCLE PROGRAM <sup>1</sup>	SPECIAL ITEMS			
Yr	Mo	Cleanscapes	Waste Management	Total Tons	Cumulative Tons	MOTOR OIL (Gallons)	ELEC-TRONICS (units)	APPLIANCES (units)						
2011	1	3,456.8	3,760.0	7,216.9	7,216.9	223.5	107	18	24					
2011	2	2,838.5	3,076.6	5,915.0	13,131.9	196.1	114	21	26					
2011	3	3,333.1	3,597.7	6,930.8	20,062.8	225.1	127	22	31					
2011	4	3,055.3	3,306.2	6,361.5	26,424.2	219.6	146	15	42					
2011	5	3,247.5	3,517.9	6,765.3	33,189.6	251.1	191	7	21					
2011	6	3,285.2	3,522.7	6,807.9	39,997.4	225.3	231	10	30					
2011	7	3,023.3	3,351.9	6,375.2	46,372.6	226.0	220	8	27					
2011	8	3,404.9	3,731.6	7,136.5	53,509.1	235.5	291	9	29					
2011	9	3,222.6	3,486.4	6,709.1	60,218.1	225.4	213	15	35					
2011	10	3,058.6	3,295.3	6,353.9	66,572.1	223.8	234	14	21					
2011	11	3,364.7	3,596.2	6,960.9	73,533.0	224.2	212	8	21					
2011	12	3,382.1	3,626.0	7,008.1	80,541.0	214.0	949	4	18					
2012	1	3,392.9	3,321.8	6,714.8	6,714.8	219.5	147	10	15					
2012	2	2,973.7	3,486.3	6,460.0	13,174.8	207.6	214	9	29					
2012	3	3,105.8	3,325.4	6,431.3	19,606.0	236.5	1175	40	100					
2012	4	3,026.4	3,268.5	6,294.9	25,900.9	242.7	1304	12	88					
2012	5	3,345.5	3,609.0	6,954.5	32,855.4	269.0	1336	12	88					
2012	6	3,132.7	3,379.6	6,512.3	39,367.7	236.8	1236	40	76					
2012	7	3,229.8	2,827.3	6,057.2	45,424.8	222.1	735	24	63					
2012	8	3,361.4	4,327.9	7,689.3	53,114.1	238.4	732	18	69					
2012	9	2,963.5	3,186.6	6,150.1	59,264.2	227.7	720	21	81					
2012	10	3,400.9	3,615.0	7,015.9	66,280.2	267.2	590	18	34					
2012	11	3,524.4	3,745.7	7,270.0	73,550.2	259.3	438	16	48					
2012	12	3,441.0	3,729.1	7,170.1	80,720.3	247.6	250	4	26					
TOTAL CITY PERCENTAGE BREAKDOWN BY MATERIAL (Estimated from periodic composition studies)										COMMERCIAL BUSINESS RECYCLE PROGRAM	SPECIAL ITEMS			
	ALUM	FERROUS METAL	GLASS	MIXED PAPER	NEWS PAPER	PLASTICS	TIN	CONTAM-INANTS	TOTAL w/cont		TOTAL w/o cont	MOTOR OIL (Gallons)	ELEC-TRONICS (units)	APPLIANCES (units)
2012 Total:	731.0	345.1	14,261.7	40,423.6	15,689.3	3,486.6	978.7	4,804.4	80,720.3	75,915.9	2,874.4	8,877	224	717
2011 Total:	734.3	348.6	14,247.1	40,236.2	15,726.3	3,500.8	984.8	4,763.0	80,541.0	75,778.1	2,689.7	3,035	151	325
2010 Total:	745.7	353.4	14,493.9	40,981.2	15,981.3	3,555.6	999.5	4,857.5	81,968.0	77,110.6	2,896.5	3,105	147	483
2009 Total:	750.8	357.3	14,534.9	40,986.1	16,066.7	3,579.2	1,007.7	4,843.5	82,126.2	77,282.8	3,947.9	1,132	156	417
2008 Total:	420.3	257.1	15,216.3	35,869.8	27,489.6	1,959.6	675.8	1,800.2	83,688.6	83,907.9				
2007 Total:	445.6	270.7	16,097.0	37,911.7	29,105.5	2,074.7	716.0	1,899.1	88,520.3	86,621.1				
2006 Total:	435.8	263.7	15,702.5	36,951.7	28,450.2	2,027.0	699.8	1,847.6	86,378.3	84,530.7				
2005 Total:	422.2	251.1	15,170.3	35,673.3	27,528.5	1,961.3	677.6	1,778.5	83,462.8	81,684.3				
2004 Total:	496.4	119.2	13,620.3	32,855.6	27,488.5	1,712.4	853.7	3,006.4	80,152.4	77,146.0				
2003 Total:	476.8	114.2	13,069.8	31,523.3	26,373.1	1,645.9	820.5	2,889.7	76,913.3	74,023.7				
2002 Total:	469.9	111.2	12,849.3	30,971.4	25,915.2	1,622.7	809.4	2,843.0	75,592.1	72,749.2				
2001 Total:	467.5	110.2	12,775.9	30,785.6	25,760.6	1,614.5	805.5	2,825.7	75,145.4	72,319.7				
2000 Total:	555.2	103.3	14,013.8	30,255.8	26,504.6	1,622.0	851.3	2,724.4	76,393.1	73,906.0				
1999 Total:	868.2	78.2	14,877.8	28,518.0	26,710.9	814.5	1,506.3	1,138.7	74,516.3	73,377.6				
1998 Total:	833.0	75.9	14,223.1	26,898.0	25,847.3	794.2	1,475.8	1,122.3	71,271.5	70,149.2				
1997 Total:	809.9	71.0	13,675.5	25,920.0	24,729.9	761.8	1,446.3	1,050.1	68,469.3	67,419.2				
1996 Total:	763.0	72.5	12,776.7	23,152.0	23,810.2	709.5	1,359.1	959.3	63,600.7	62,641.4				
1995 Total:	757.3	71.3	12,949.0	22,844.4	24,208.9	657.8	1,391.3	919.6	63,800.8	62,881.2				
1994 Total:	747.6	66.9	12,532.0	22,980.7	22,552.7	634.9	1,361.5	905.9	61,786.7	60,880.8				
1993 Total:	699.8	NA	11,376.3	21,259.5	20,014.8	557.8	1,257.0	854.4	56,123.7	55,232.1				
1992 Total:	866.1	NA	11,438.2	19,049.1	18,139.6	288.8	1,478.6	1,259.6	52,520.0	51,260.4				
1991 Total:	685.5	NA	9,951.0	20,199.5	16,835.9	268.3	1,447.3	1,004.4	50,392.0	49,387.5				
1990 Total:	895.1	NA	9,325.6	17,702.6	17,731.4	163.1	1,313.1	685.9	47,816.8	47,130.9				
1989 Total:	433.2	NA	8,741.3	15,192.3	15,308.4	88.9	1,279.9	121.0	41,165.0	41,044.0				
1988 Total:	242.3	NA	4,833.6	7,739.7	10,481.4	NA	649.2	39.4	23,985.6	23,946.2				

July 25-Aug 2, 2012: Waste Management work stoppage due to strike.

March 30, 2009: New contracts began. Cleanscapes and Waste Management are contracted haulers.

<sup>1</sup> Business Recycling tons included in residential tons prior to 2009.

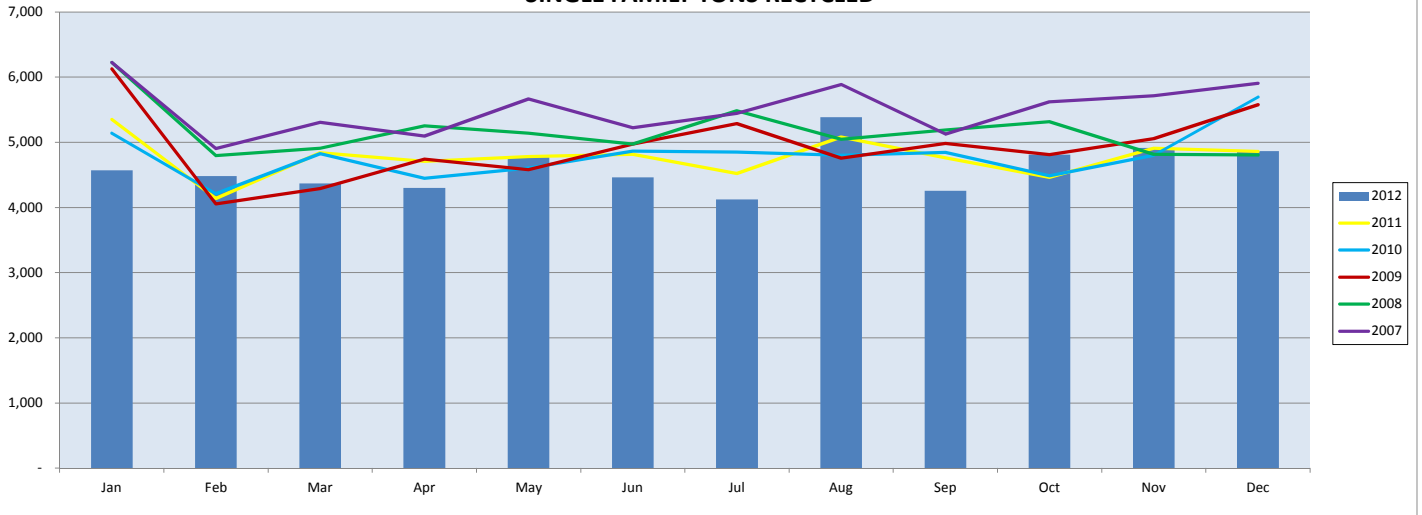
Jan 2005: Ban on recycle in garbage (except plastics) began

April 2000: New contract begins. Allied Waste and Waste Management are contracted haulers

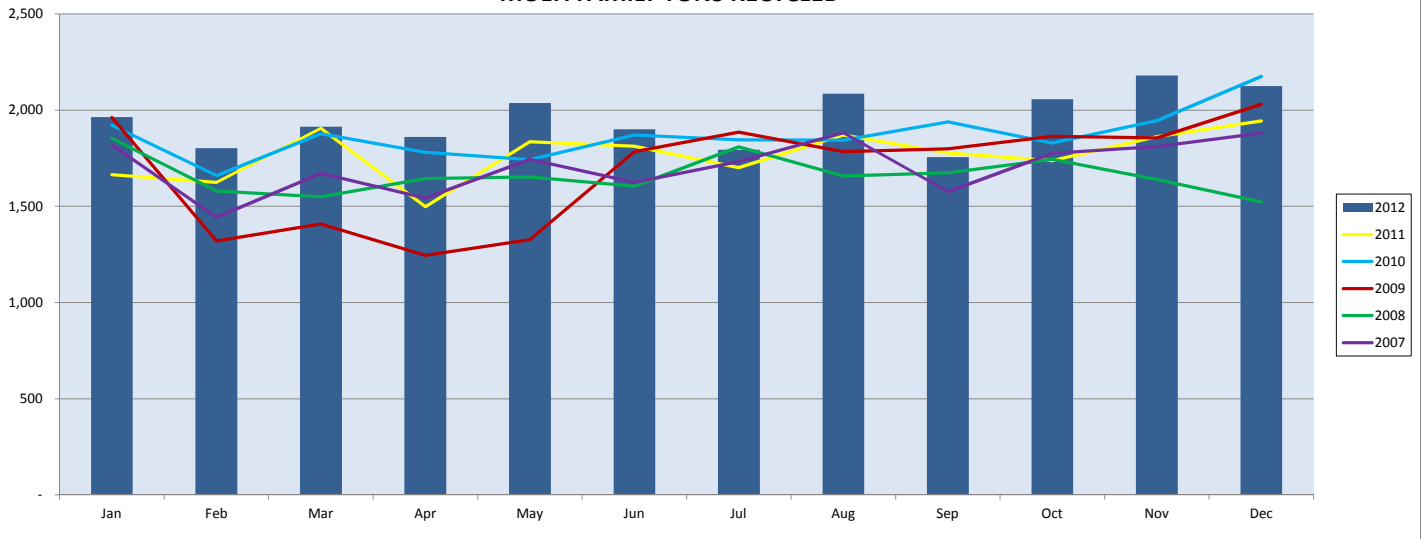
New materials (polycoated paper, aseptic packaging and additional plastics) added to program

Jan 2000: New Billing system (Banner/CCSS)

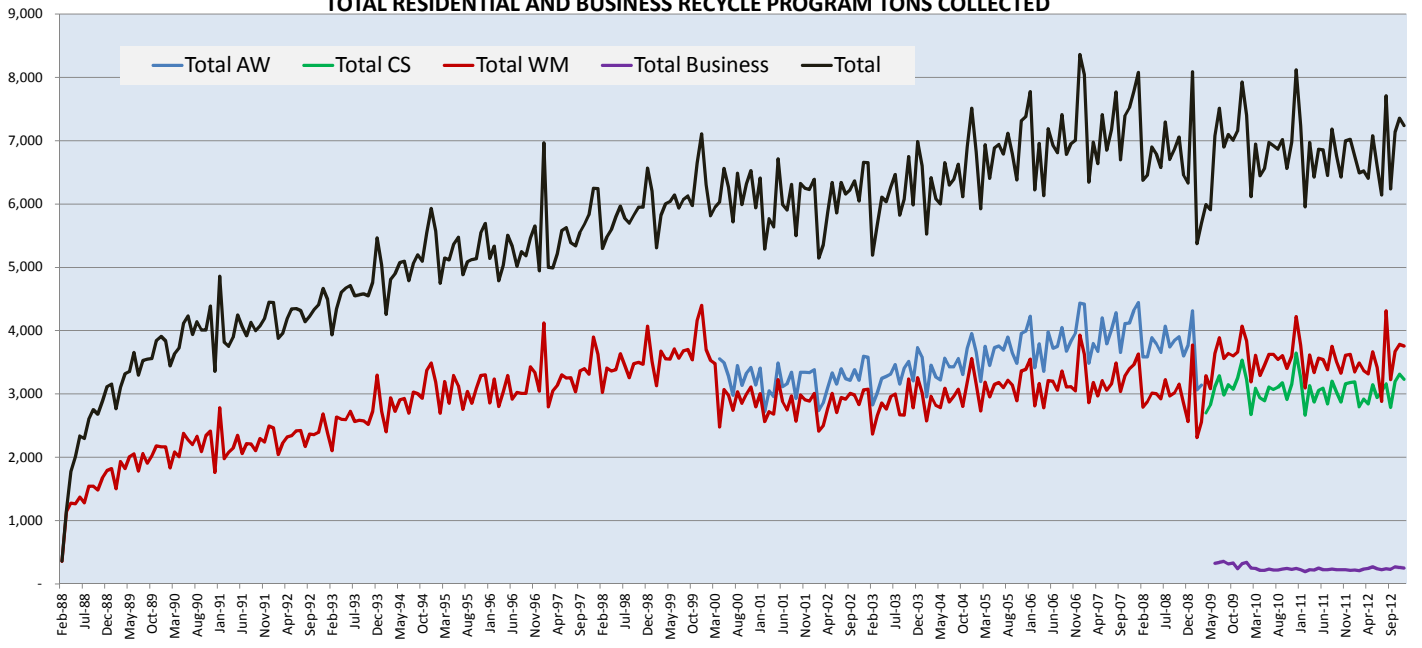
### CITY OF SEATTLE SINGLE FAMILY TONS RECYCLED



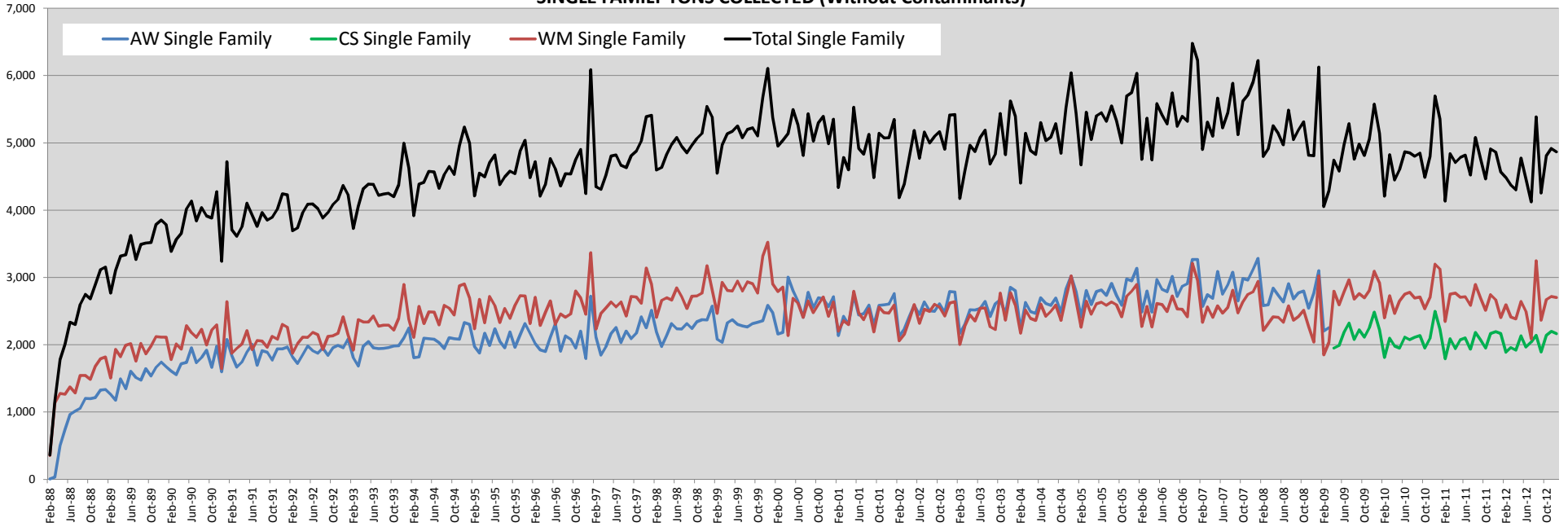
### CITY OF SEATTLE MULTI FAMILY TONS RECYCLED



### CITY OF SEATTLE TOTAL RESIDENTIAL AND BUSINESS RECYCLE PROGRAM TONS COLLECTED



**CITY OF SEATTLE  
SINGLE FAMILY TONS COLLECTED (Without Contaminants)**



**CITY OF SEATTLE  
MULTI FAMILY TONS COLLECTED (Without Contaminants)**

