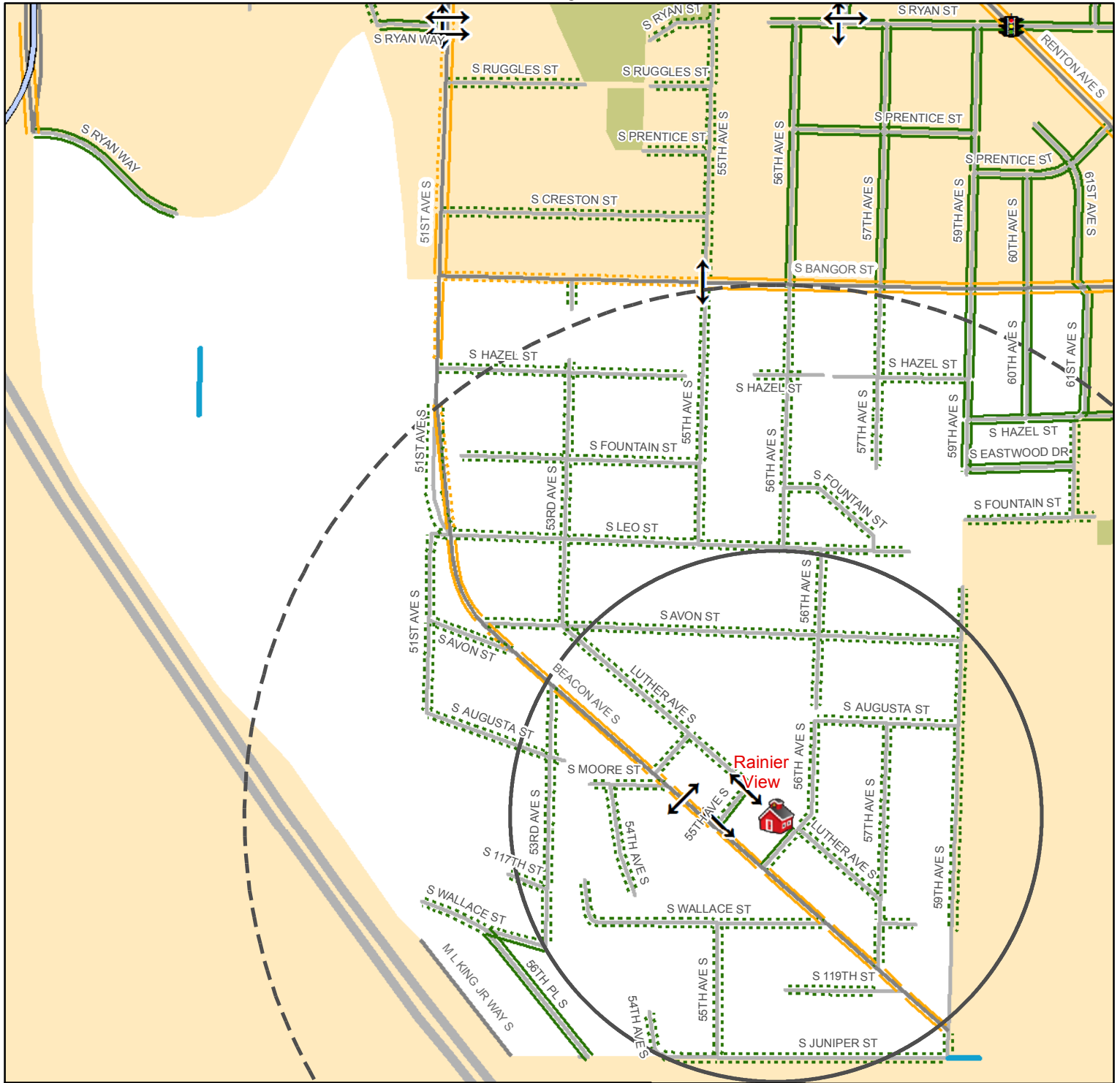


Rainier View Elementary - 11650 Beacon Ave S



2016-2017 School Year

Crossing Conditions

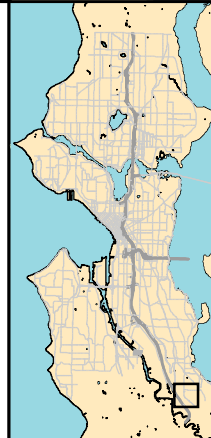
- Crossing Guard Assignment*
- School Patrol*
- Traffic Signals
- All Way Stop Intersection
- Crossing Beacon
- Designated School Crossing
- Bridge

Walking and Biking Conditions

- 15-20 min walk, 10 min bike ride
- 10 min walk, 5 min bike ride
- Stairway
- Multi Use Path
- Neighborhood Greenway
- Protected Bike Lane
- Neighborhood Street with Sidewalk
- Neighborhood Street with no Sidewalk
- Busy Street with Sidewalk
- Busy Street with no Sidewalk (not recommended)

Community Facilities

- Community Center
- Library
- Police Station
- Fire Station
- Park



0 250 500 1,000 Feet

©2012, THE CITY OF SEATTLE. All rights reserved. Produced by the Seattle Department of Transportation. No warranties of any sort, including accuracy, fitness or merchantability, accompany this product.

Coordinate System: State Plane, NAD83-91, Washington, North Zone
 Orthophoto Source: Pictometry 2007

Plot Date : 7/25/2016
 Author : lynchc
 School_Walking_Maps_16_17

* Crossing guard and school patrol locations are subject to change.

