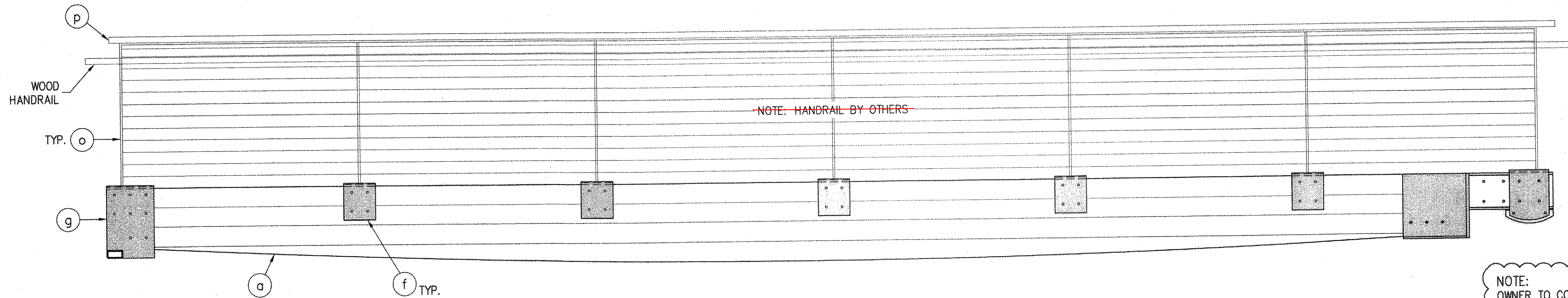
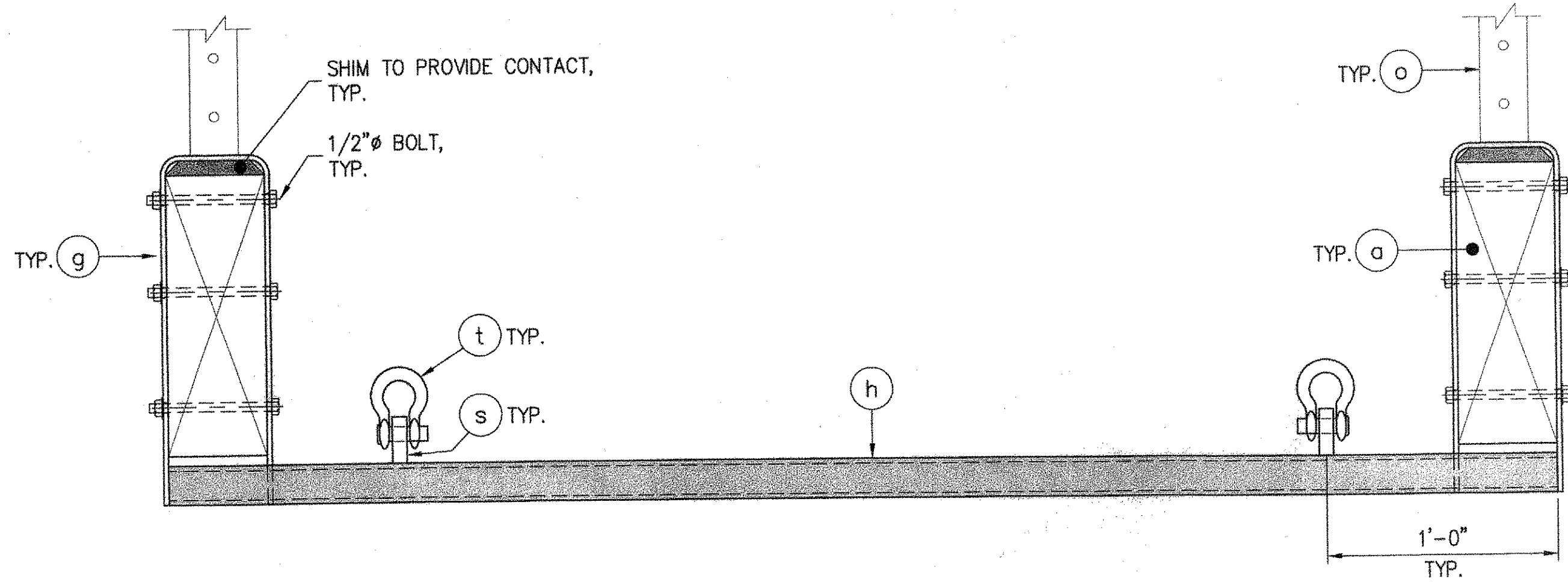


DECK PLAN

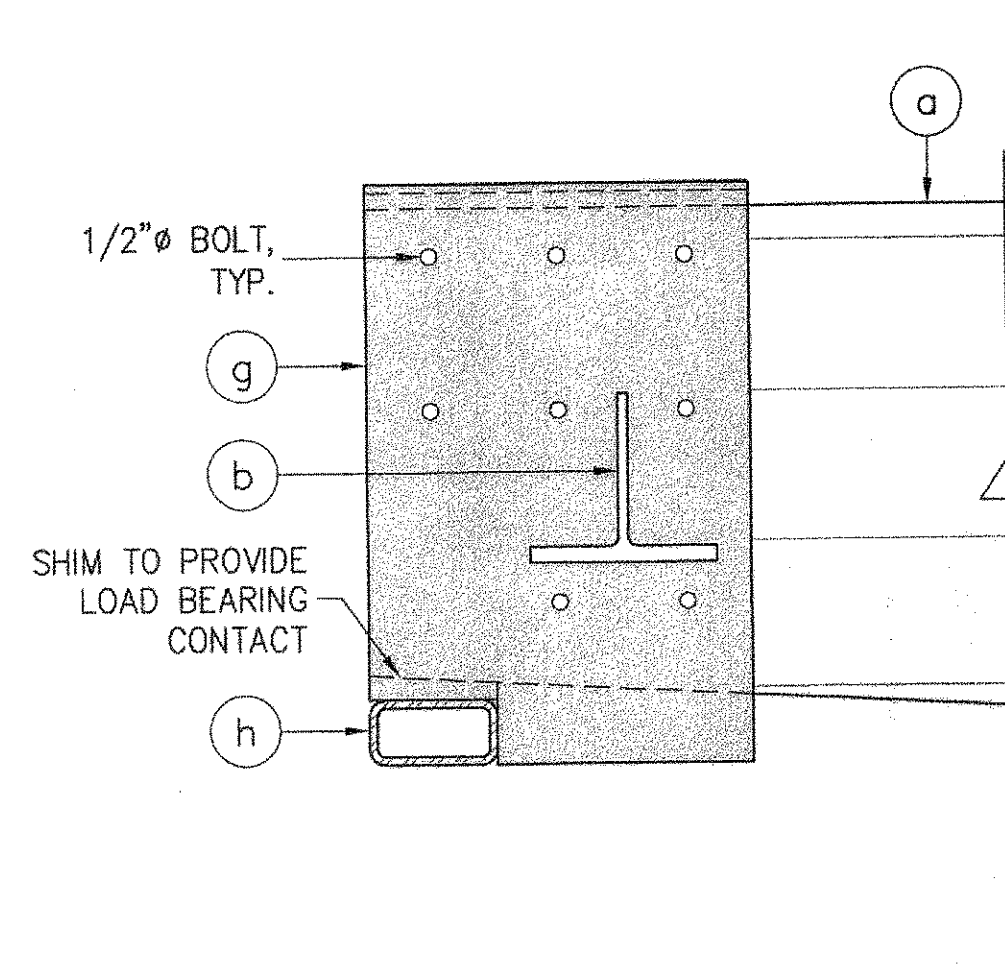


GANGWAY ELEVATION

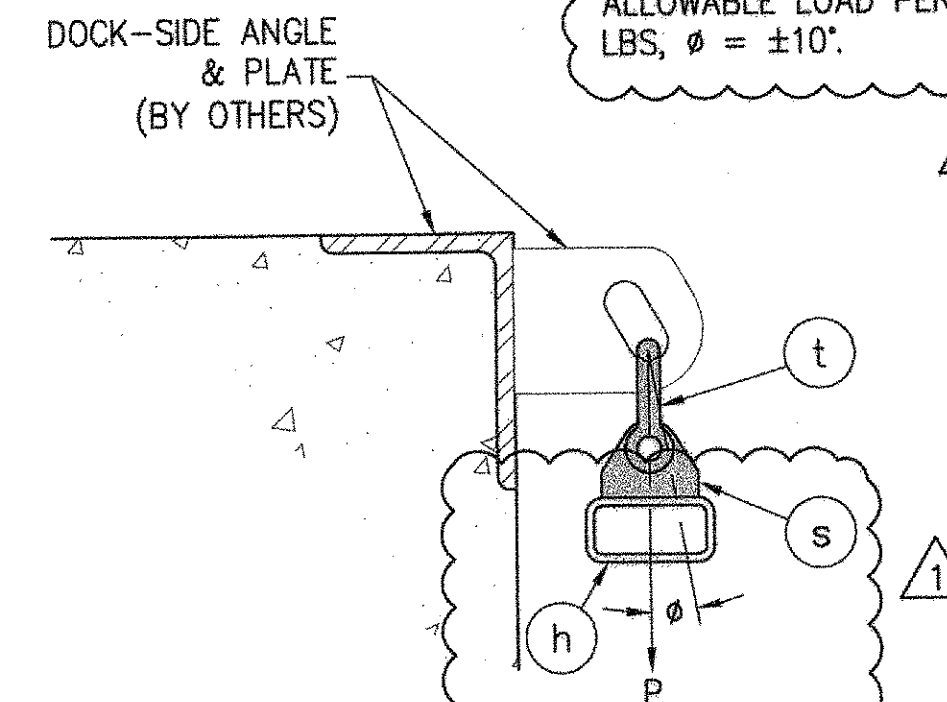
NOTE:  
OWNER TO COORDINATE WITH SEATTLE PARKS  
DEPARTMENT FOR ABUTMENT DESIGN. MAXIMUM  
ALLOWABLE LOAD PER SHACKLE: P = 5,000  
LBS,  $\phi = \pm 10'$ .



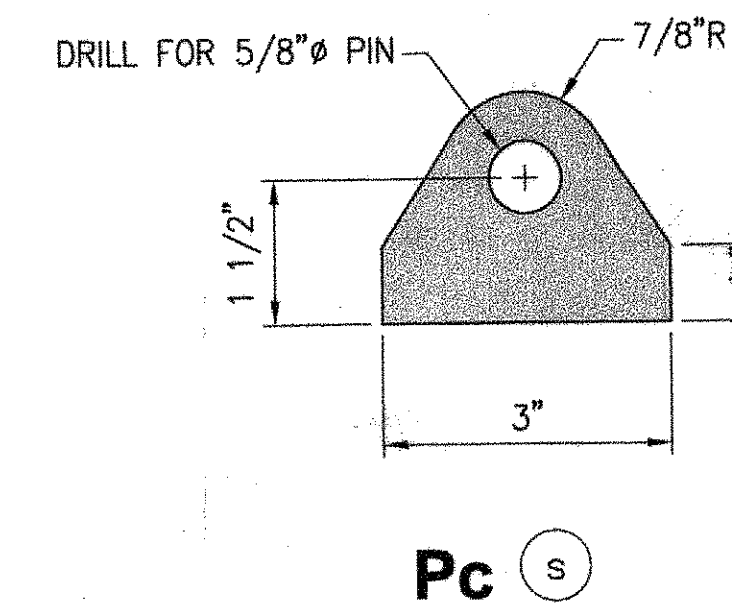
END VIEW



SIDE VIEW



DOCK-SIDE MOUNT

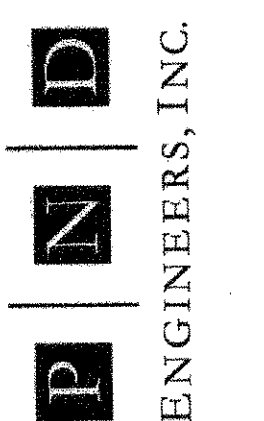


Pc s

THE CITY OF SEATTLE  
DEPARTMENT OF  
PLANNING  
AND DEVELOPMENT  
OCT 25 2010  
APPROVED Subject to Errors  
And Omissions  
By: *Cheerl Burwell*  
CHEERL BURWELL

RECEIVED  
OCT 06 2010  
DEPT. OF PLANNING AND  
DEVELOPMENT

811 First Avenue, Suite 570  
Seattle, Washington 98104  
Phone: 206-624-1387  
Fax: 206-624-1388  
Email: mail@pndengineers.com



EXP 12/31/2011  
*Michael M. Huggins*  
REGISTERED PROFESSIONAL ENGINEER  
10/5/2010

PROJECT: **CENTER FOR WOODEN BOATS  
FLOAT RECONFIGURATION**  
TITLE: **WEST ENTRY GANGWAY  
DECK AND HANGER DETAILS**

REV	DATE	DESCRIPTION
1	3/17/2010	DPD COMMENT REVISIONS

DESIGNED BY: MNH  
DRAWN BY: ALR  
CHECKED BY:  
DATE: AUGUST 2009  
SCALE: NOTED  
PROJECT NO: 094046.02  
SHEET NO:

3/16/10 Drawings\2009\094046.02 - CMB Floating Dock Retrofit\Final\094046.02-012A-12B-12C-12D.dwg